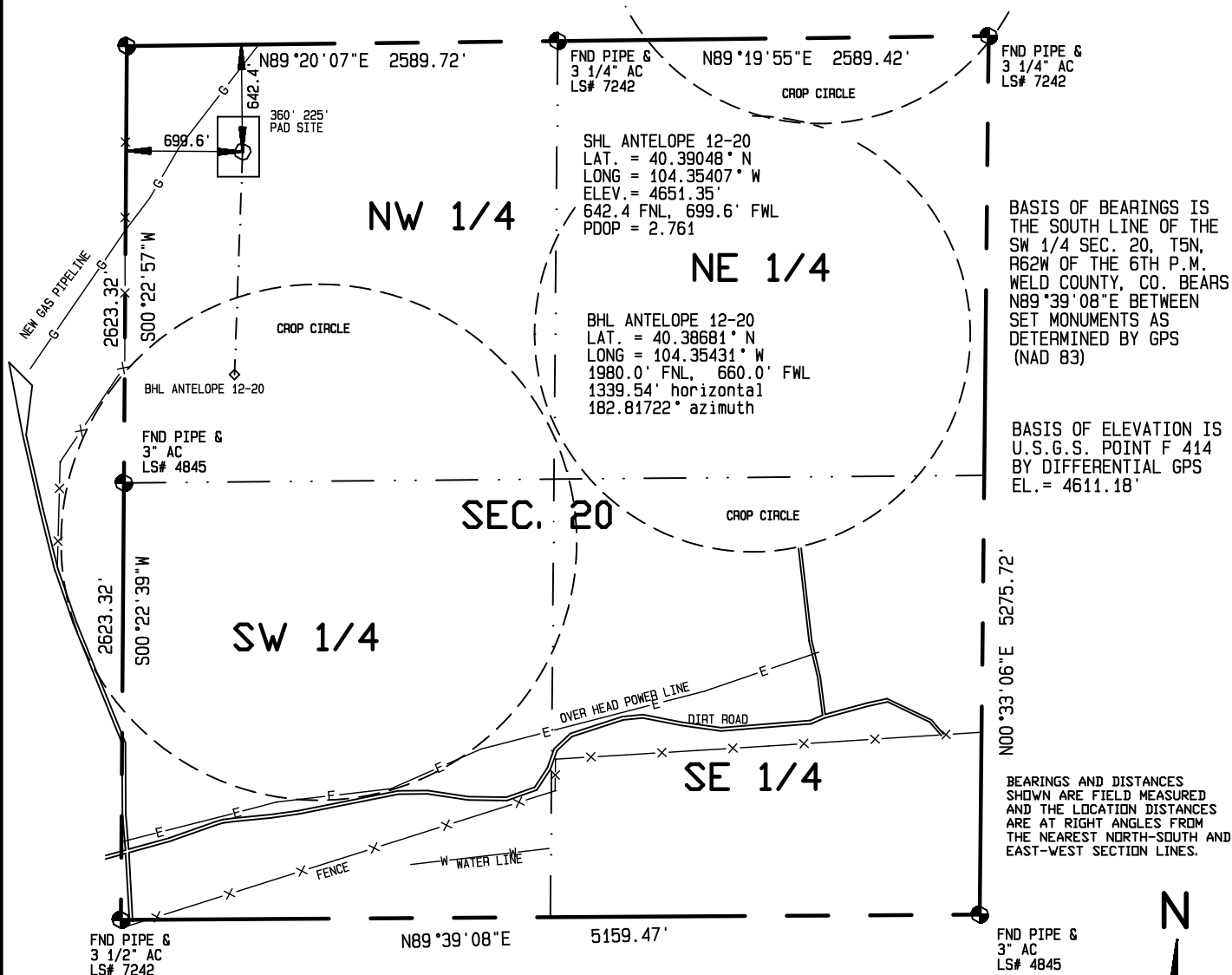


IMPROVEMENTS WITHIN 400' OF THE WELL SITE INCLUDE: A GAS PIPE LINE & ROAD
 PASSES 317 FEET TO THE NORTHWEST.



I HEREBY CERTIFY THAT THIS PLAT
 IS AN ACCURATE REPRESENTATION
 OF A CORRECT SURVEY SHOWING
 THE LOCATION OF SAID WELLSITE:

Dan Griggs PLS# 38018

CONTRACT SURVEYORS, LTD.
 COMPLETE SURVEYING AND GLOBAL POSITIONING

2133 SOUTH BELLAIRE STREET #14
 DENVER COLORADO 80222
 (303) 756-3695



MULTIPLE WELL PLAN
 PAGE 6

CSL# 11104-22

DATE OF FIELD WORK:

7 JUNE 2011

DATE OF DRAWING:

6 JULY 2011

ANTELOPE 12-20 Directional Well

NW 1/4, NW 1/4 SEC. 20, T5N, R62W

BONANAZA CREEK ENERGY OPERATING COMPANY, LLC

WELD COUNTY, COLORADO

1000 500 0 1000



Scale 1" = 1000'