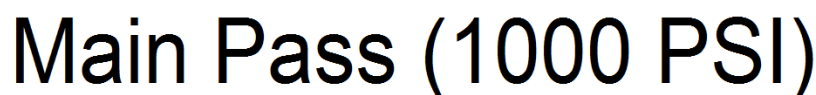




<<< Fold Here >>>
All interpretations are opinions based on inferences from electrical or other measurements and we cannot and do not guarantee the accuracy or correctness of any interpretation, and we shall not, except in the case of gross or willful negligence on our part, be liable or responsible for any loss, costs, damages, or expenses incurred or sustained by anyone resulting from any interpretation made by any of our officers, agents or employees. These interpretations are also subject to our general terms and conditions set out in our current Price Schedule.
Comments
<p>Main Pass ran under 1000 PSI.</p> <p>Directions:</p> <p>1st Bosque Entrance, turn up Torres Canyon, go thru gate, first hard left to location.</p>

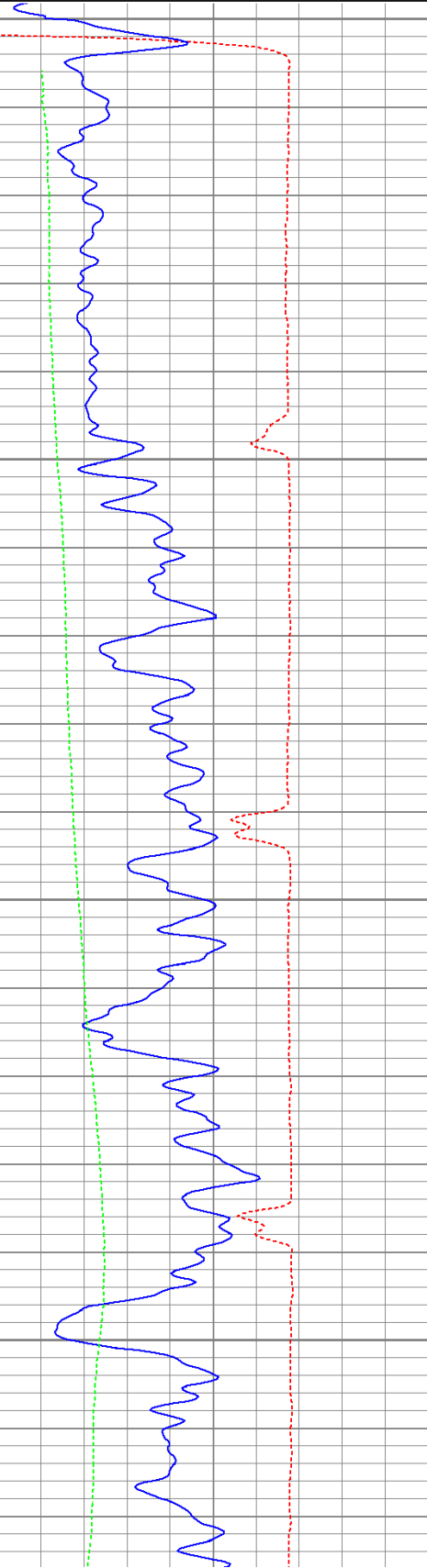


Database File: ac08-1061111b.db  
Dataset Pathname: pass3.1  
Presentation Format: cbldig  
Dataset Creation: Sat Jun 11 09:13:12 2011 by Calc Open-Cased 110302  
Charted by: Depth in Feet scaled 1:240

400	Travel Time (usec)	200
0	GR (GAPI)	200
0	DEVI (°)	10

0	Amplitude (mV)	100
9	Collar Locator	-1

200 Variable Density 1200

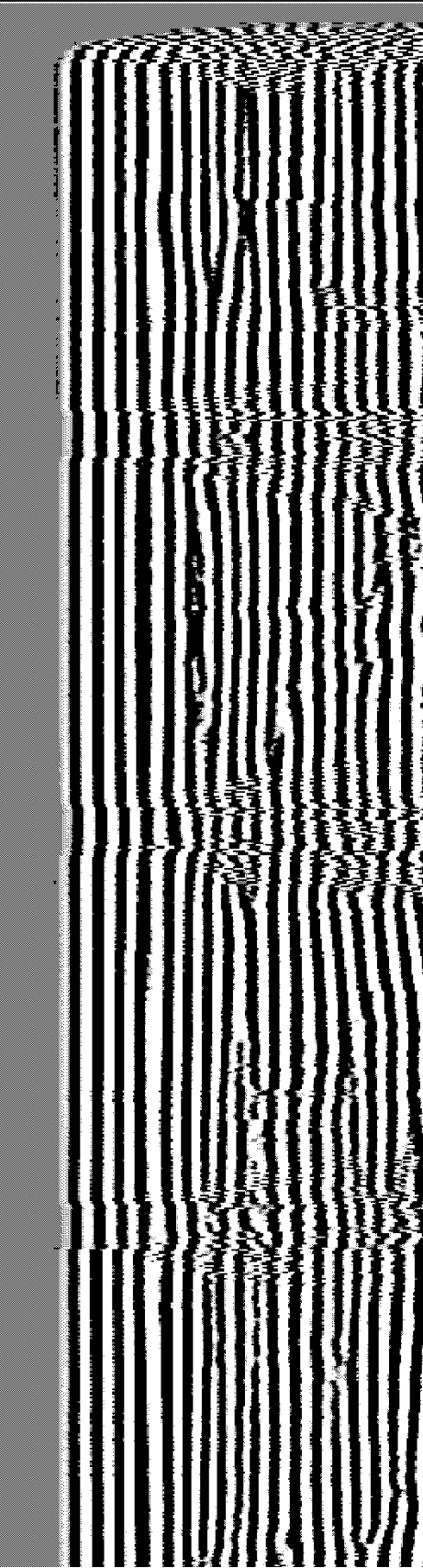
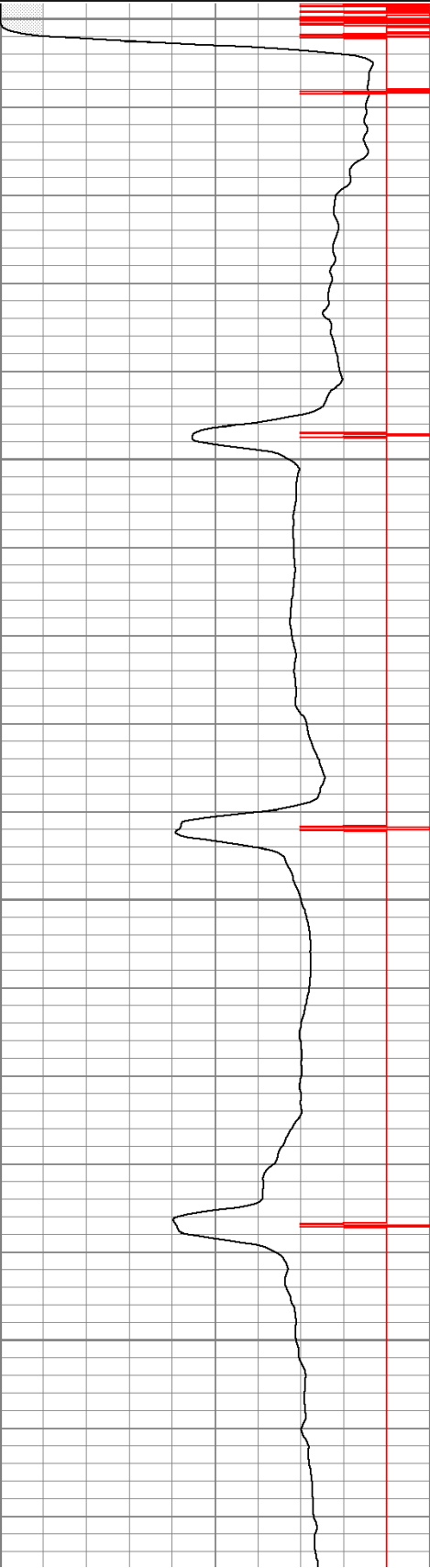


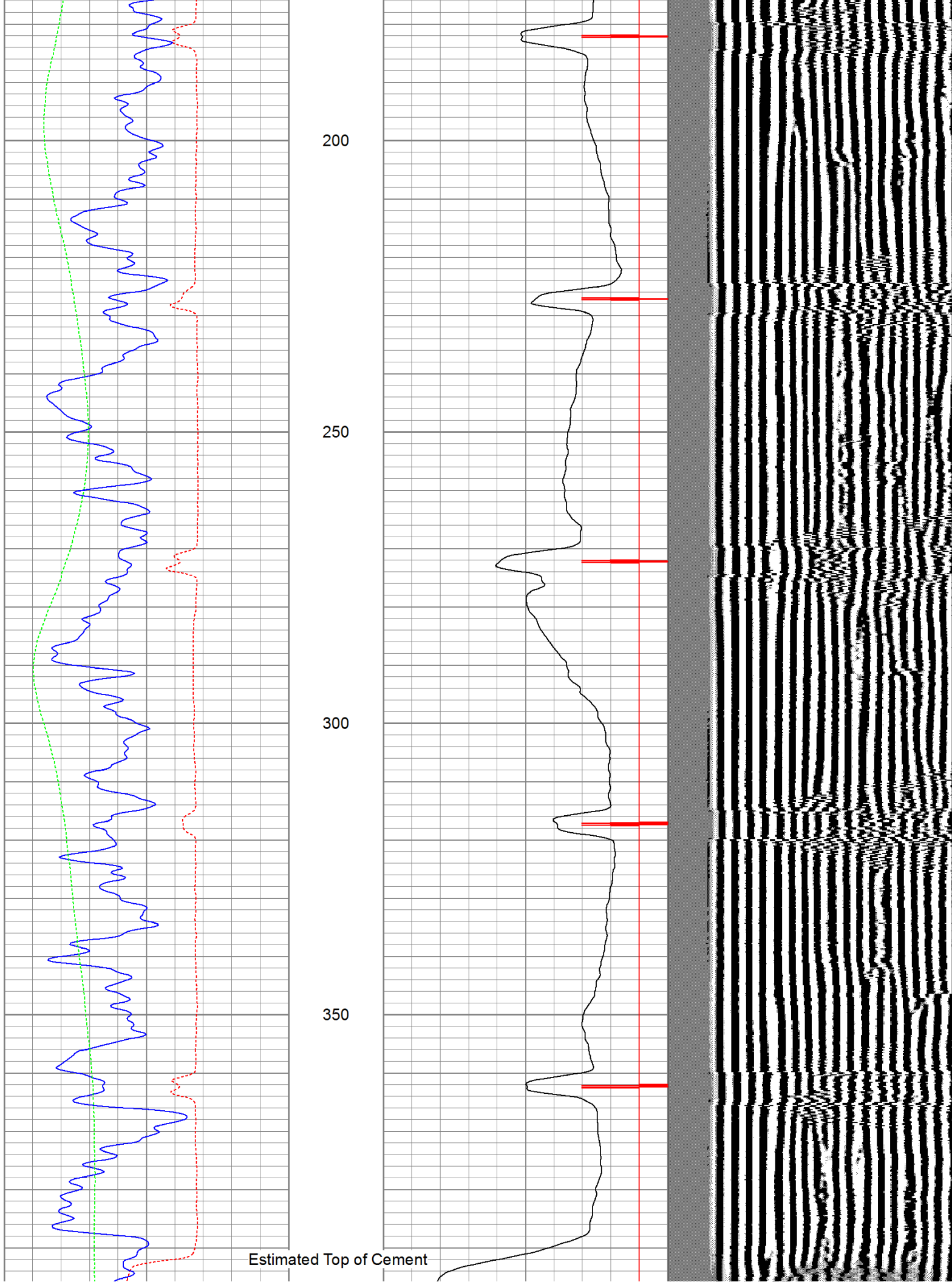
0

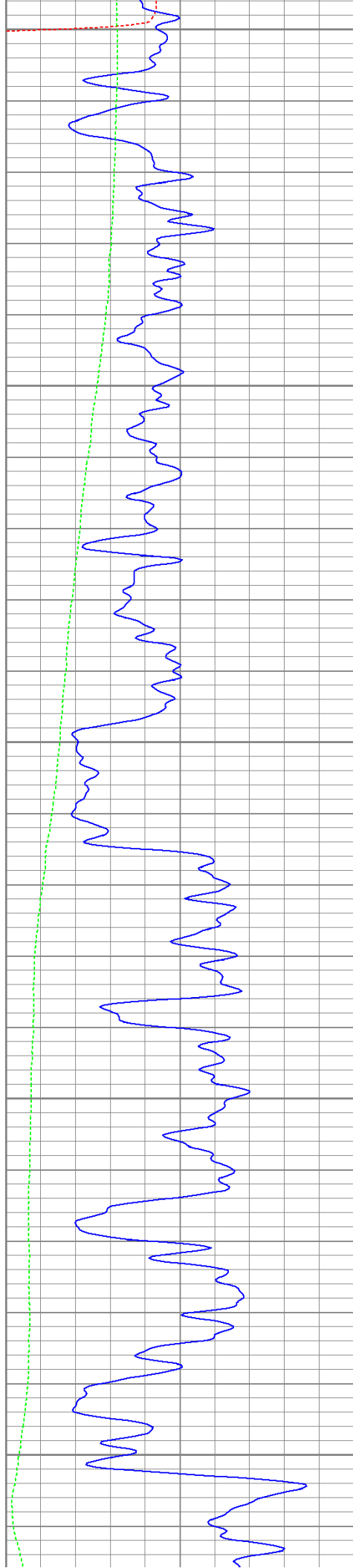
50

100

150







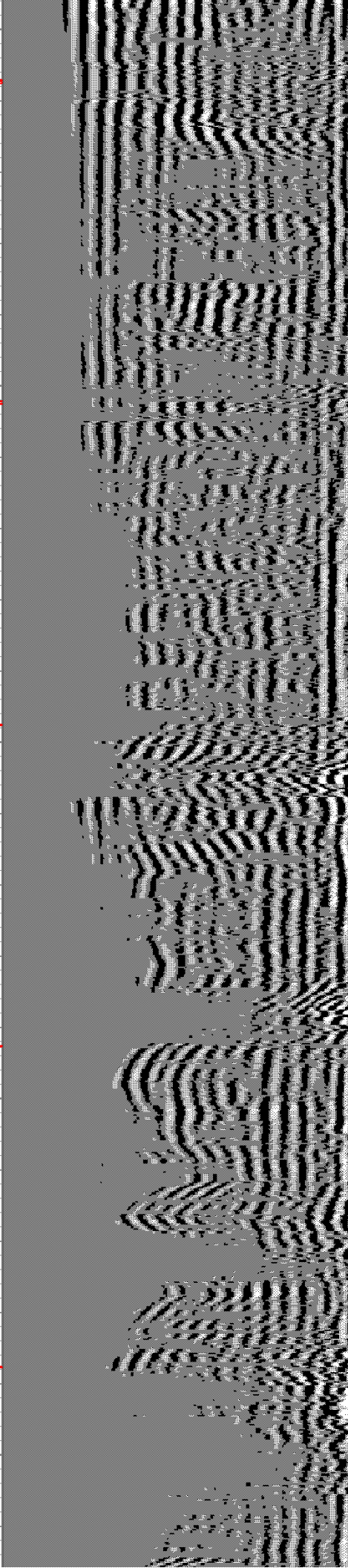
400

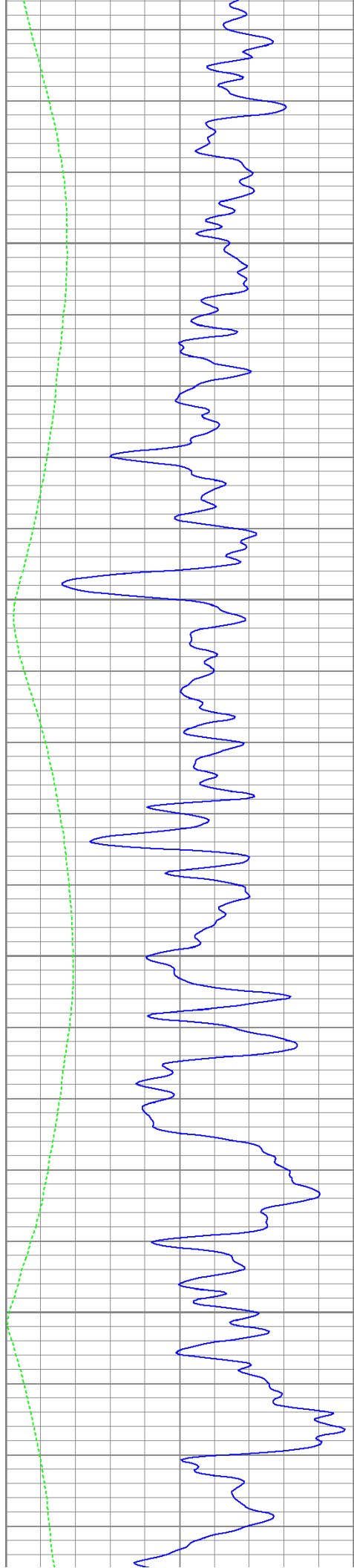
450

500

550

600



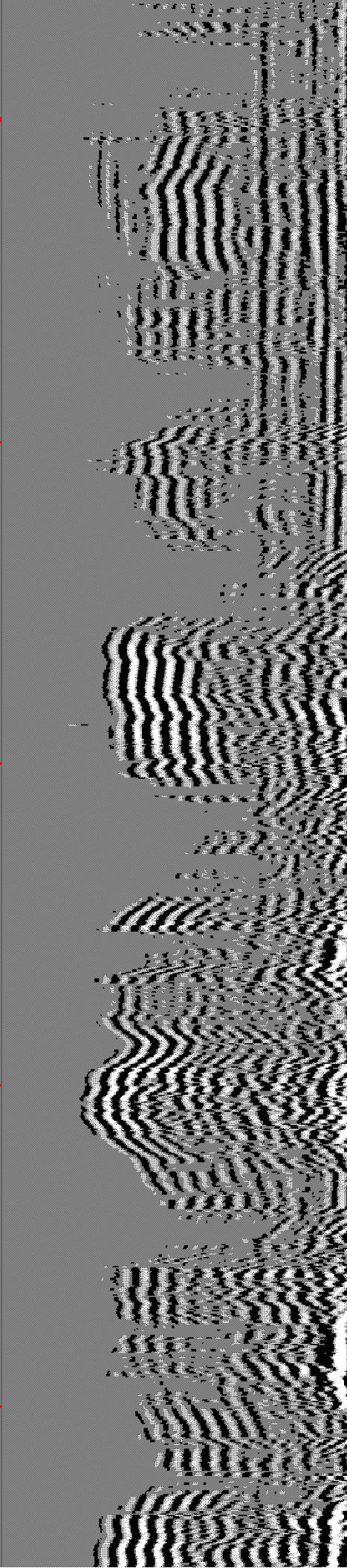
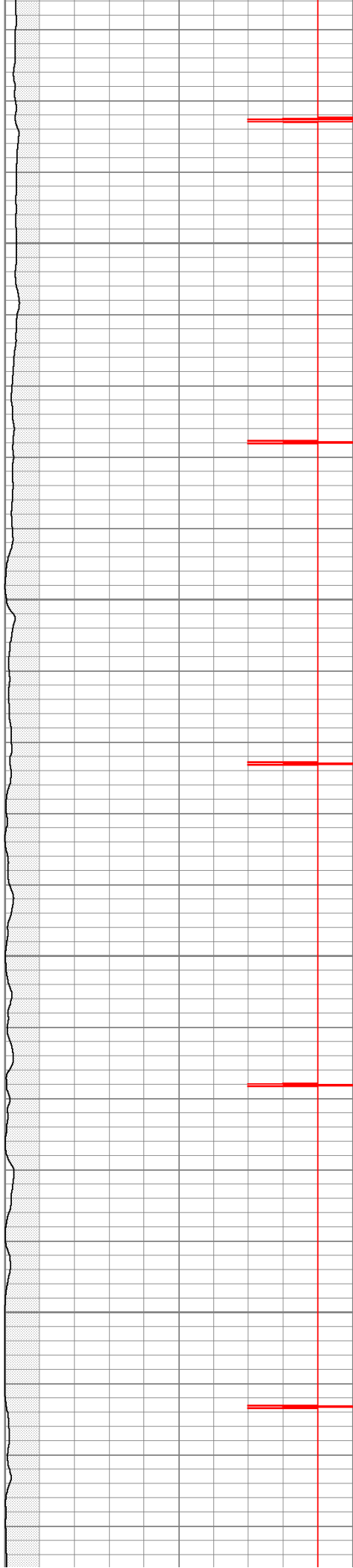


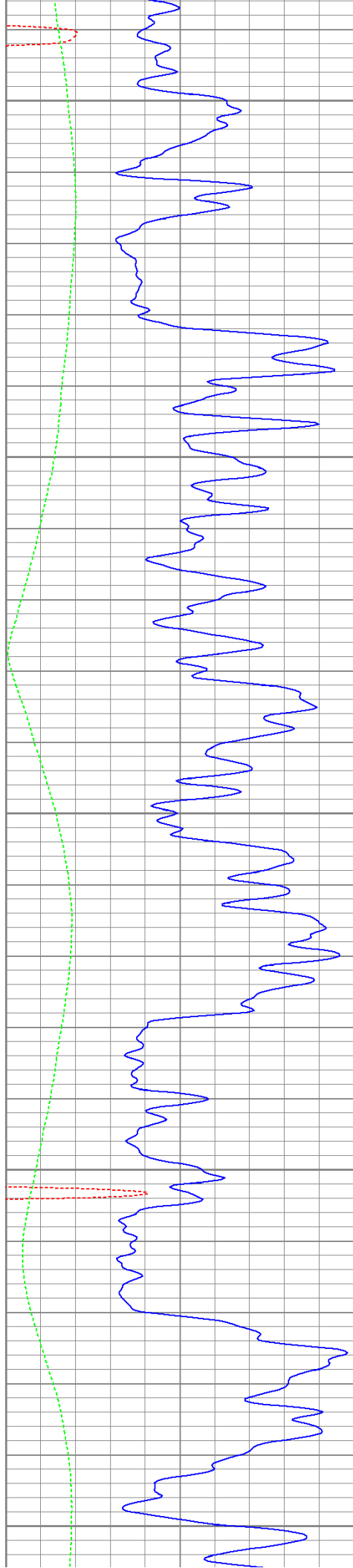
650

700

750

800





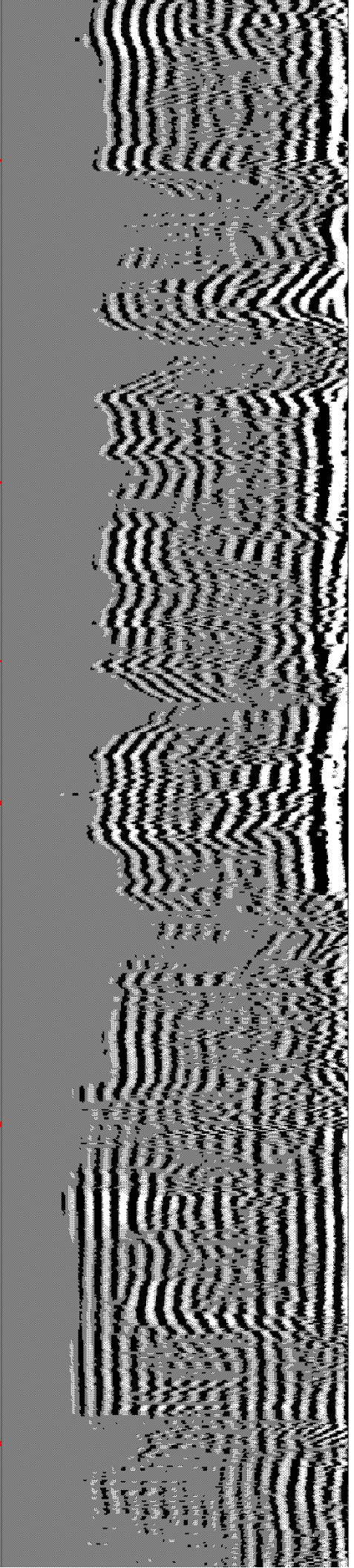
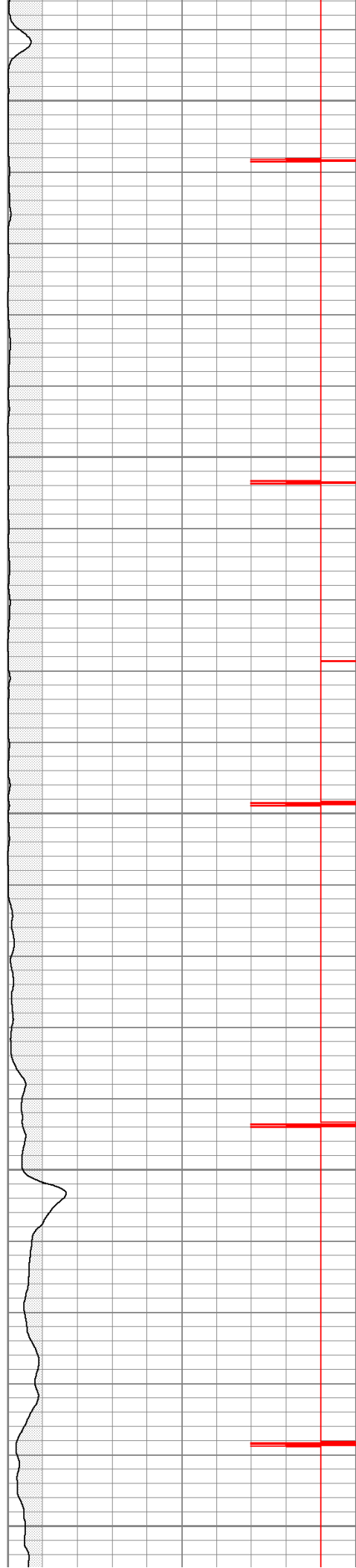
850

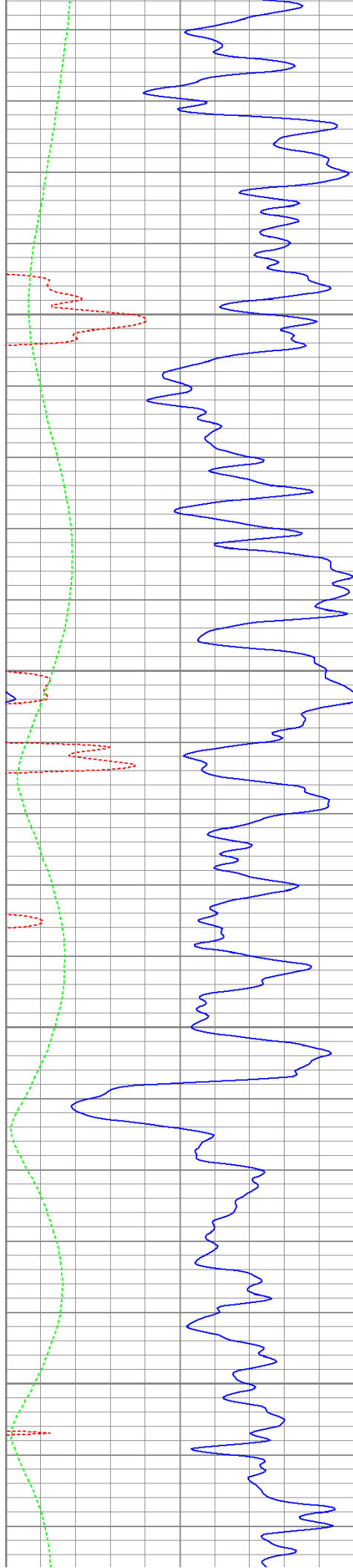
900

950

1000

1050



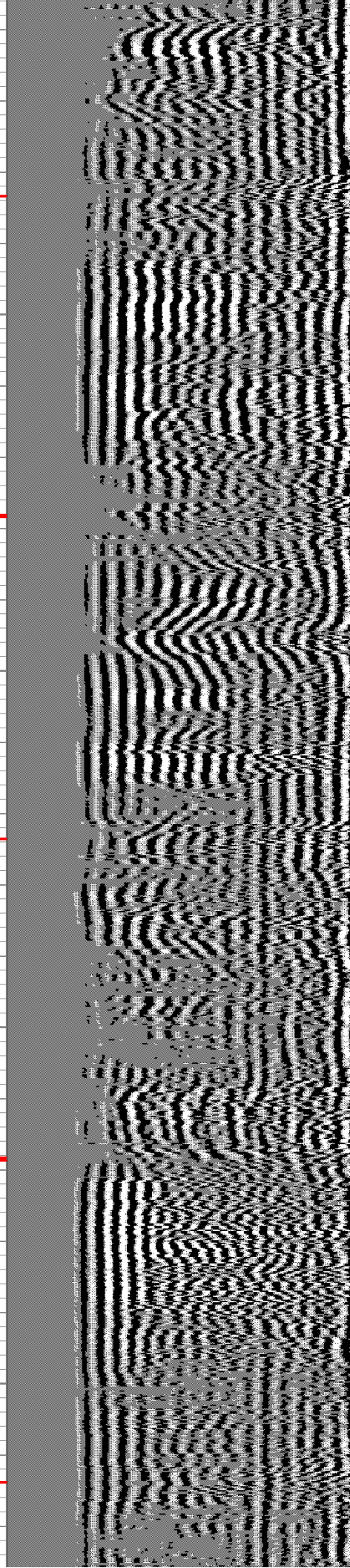
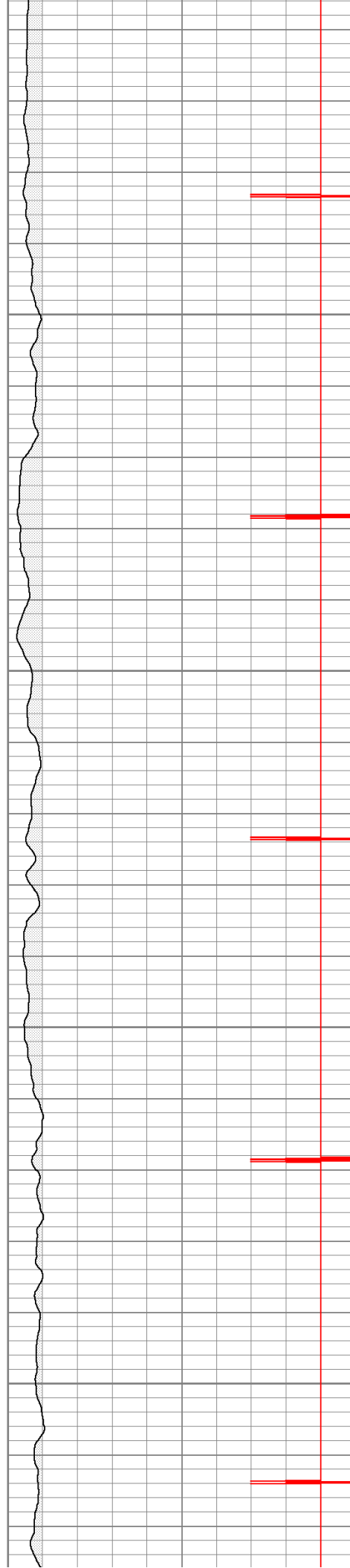


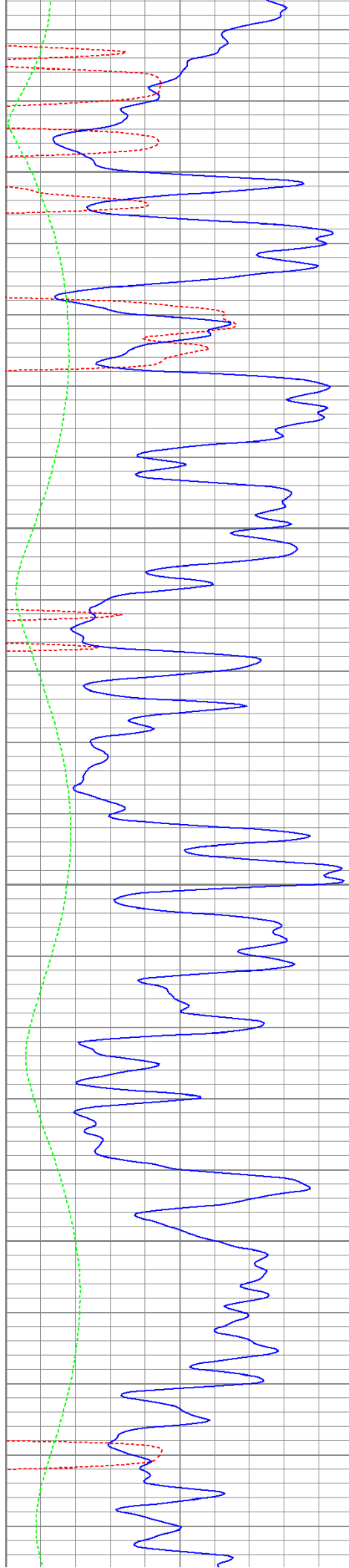
1100

1150

1200

1250





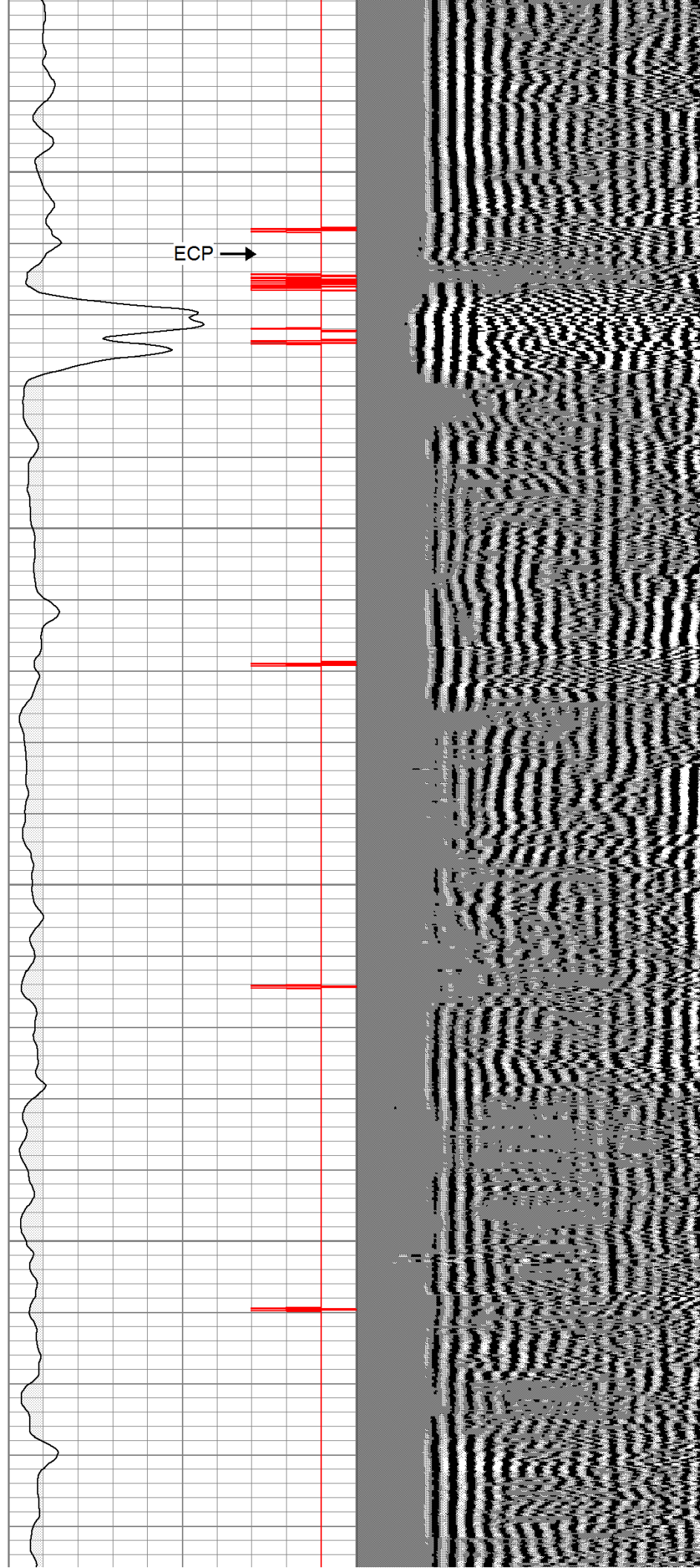
1300

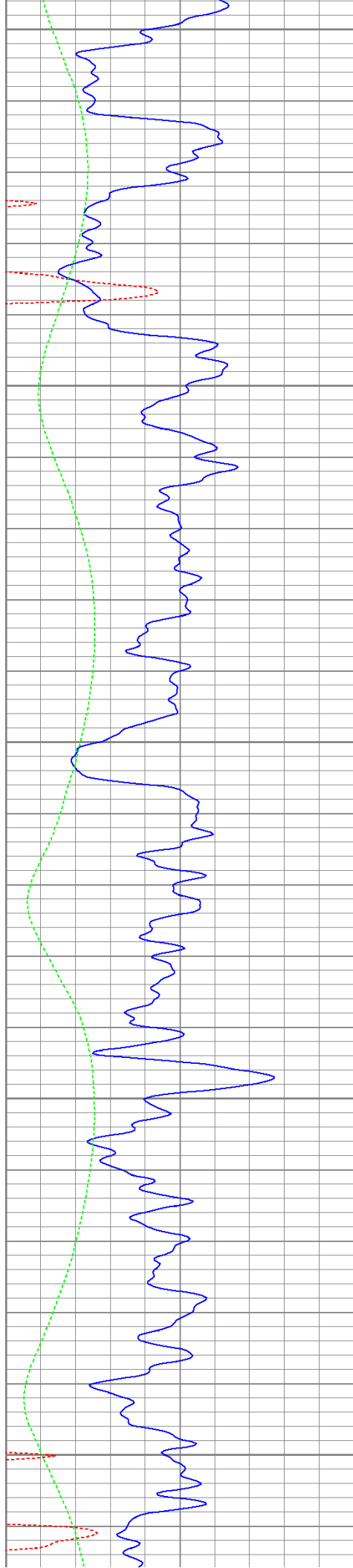
1350

1400

1450

ECP →





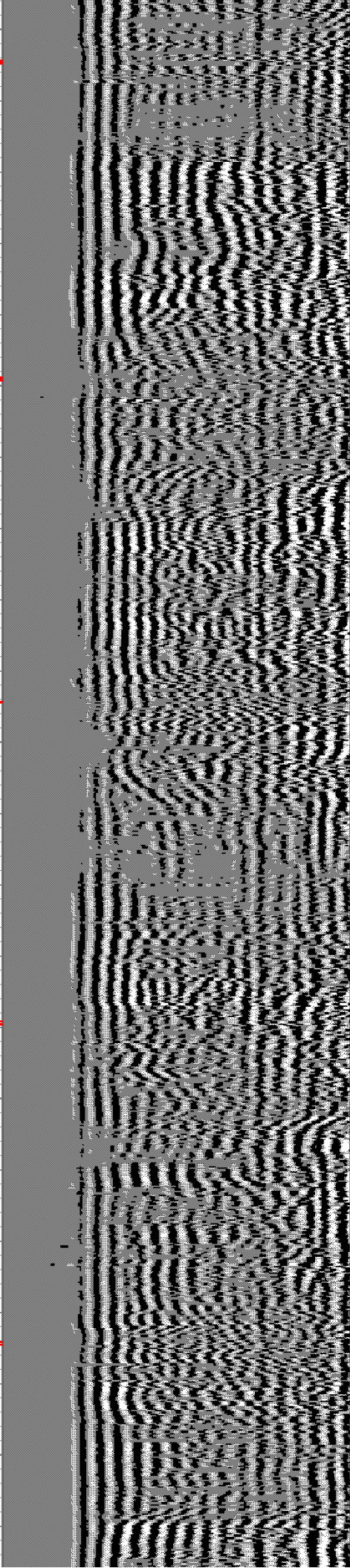
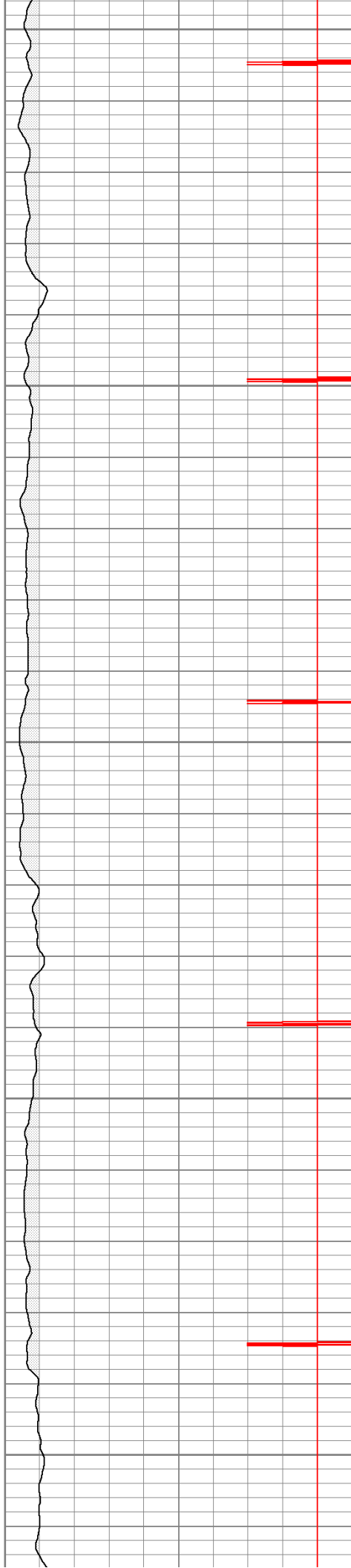
1500

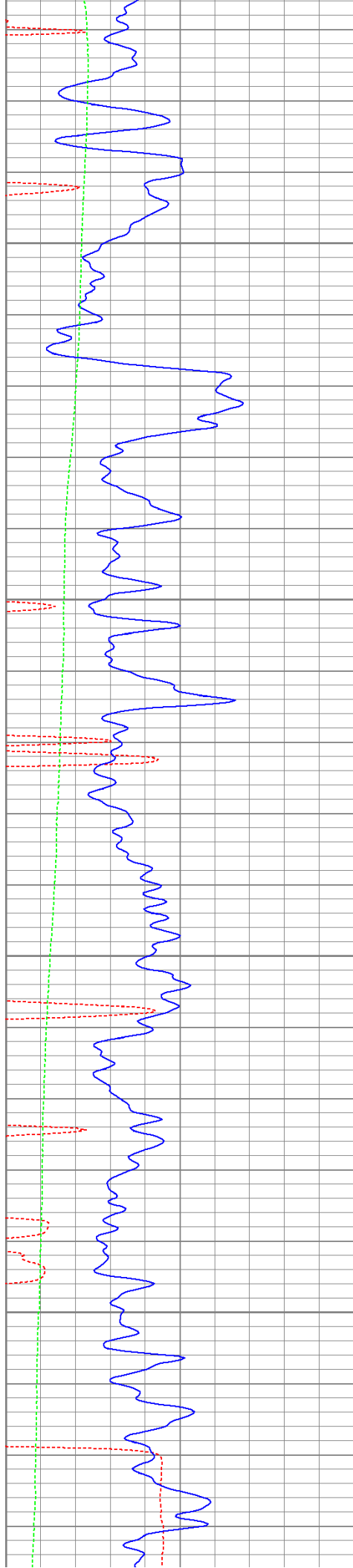
1550

1600

1650

1700



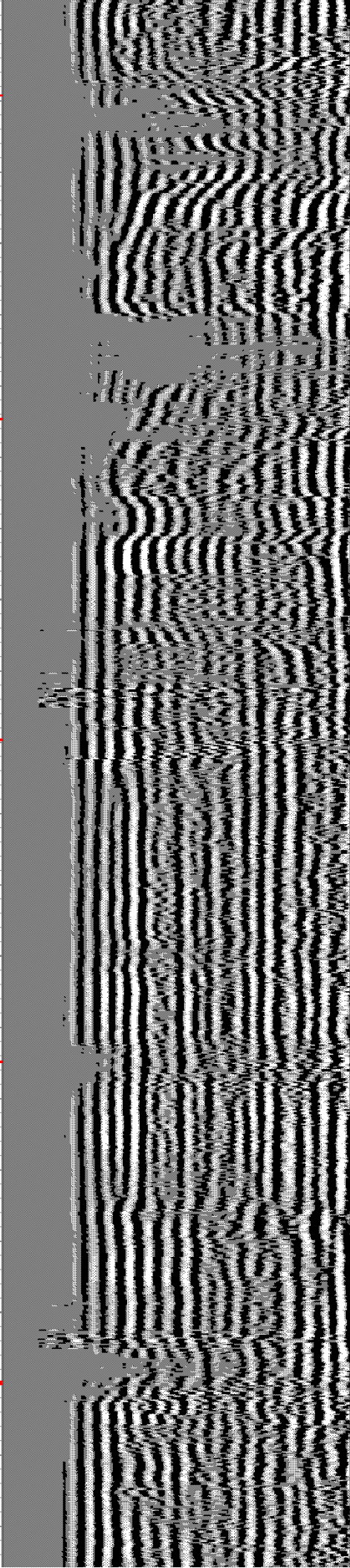
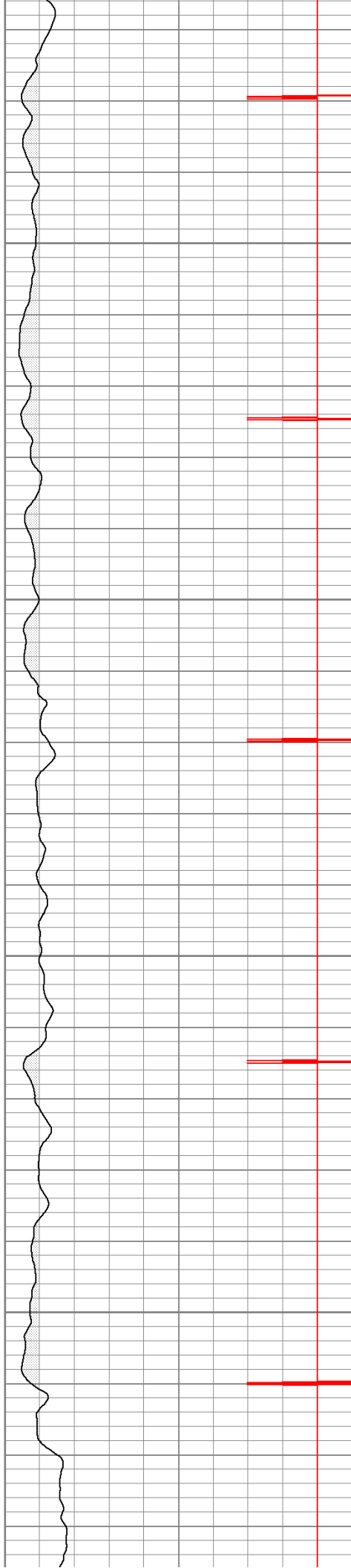


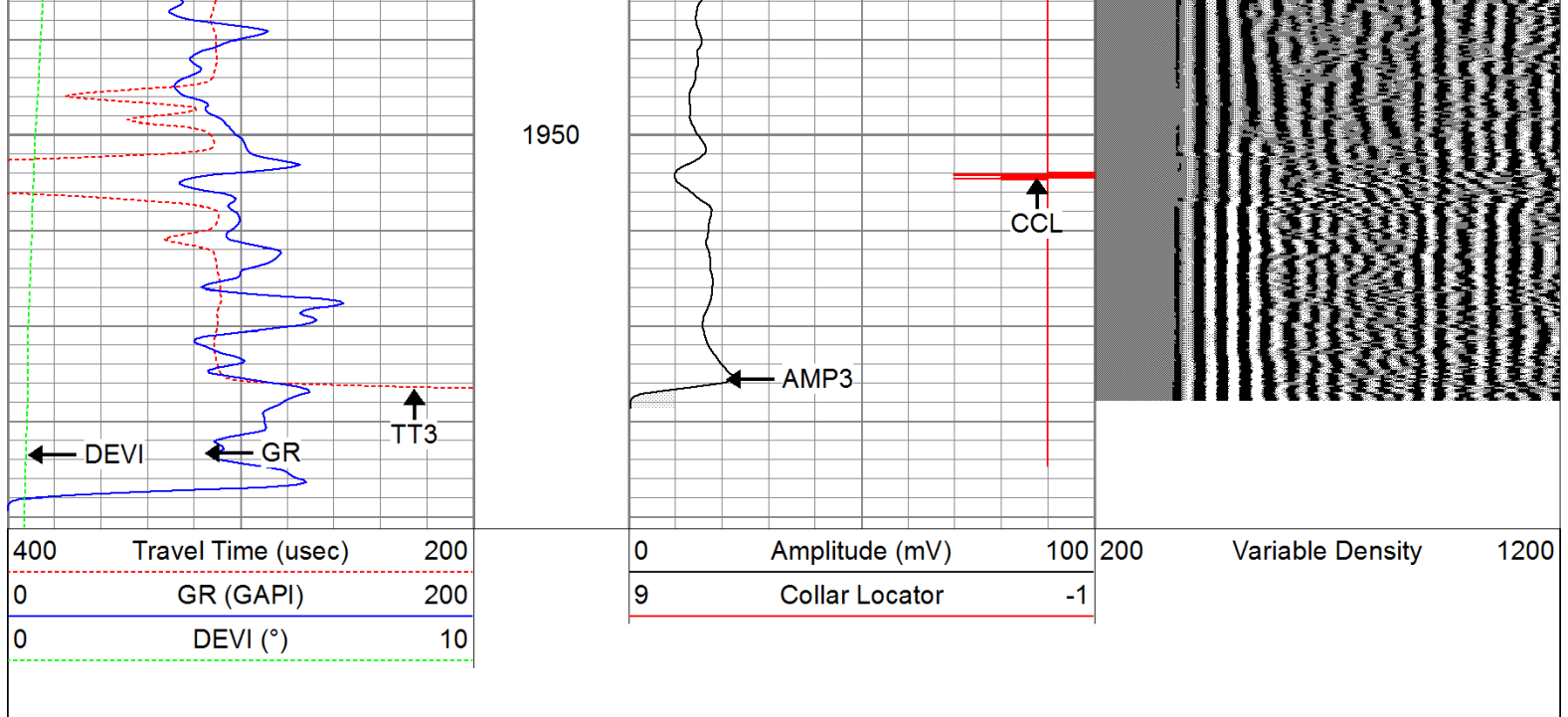
1750

1800

1850

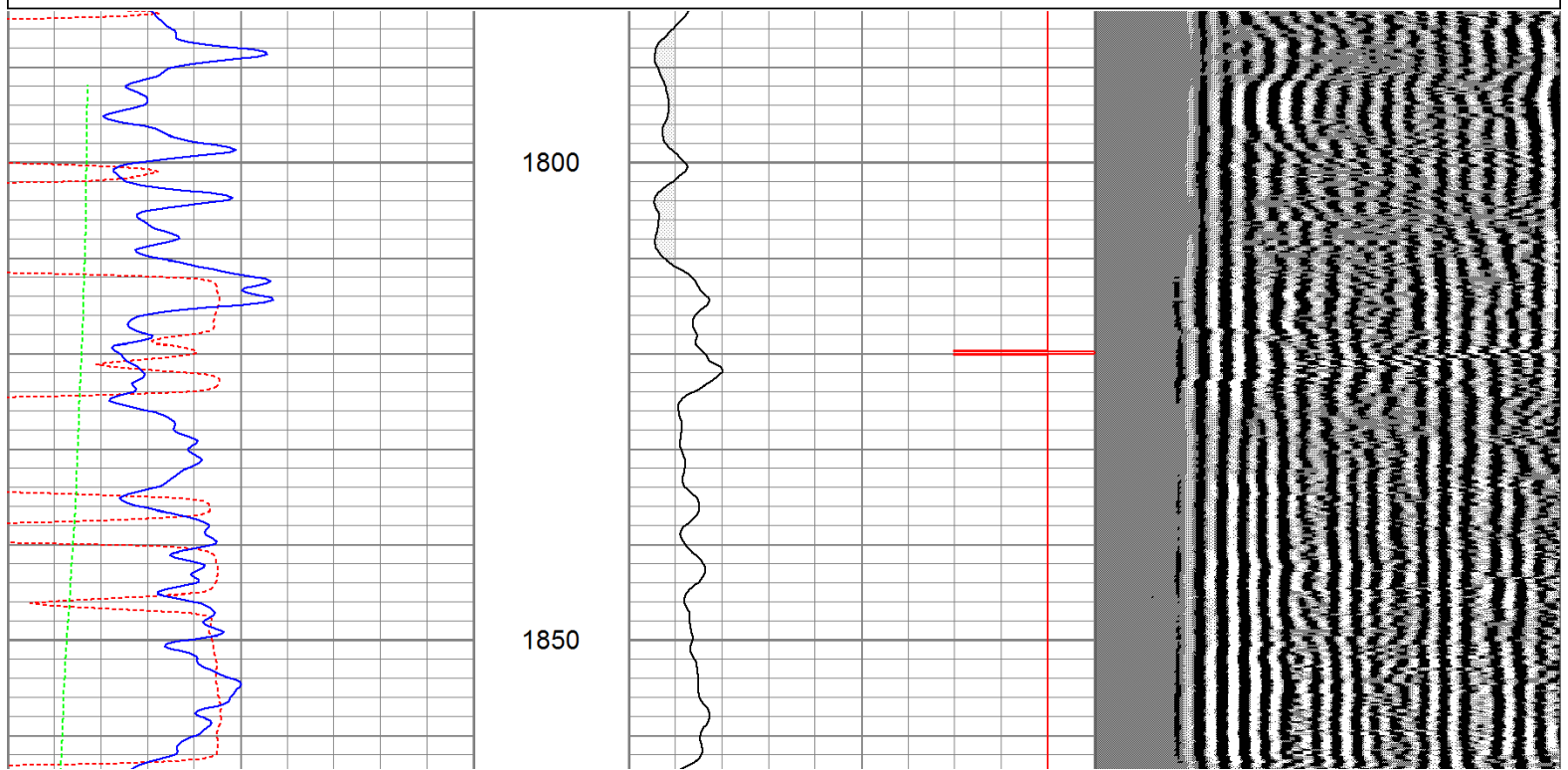
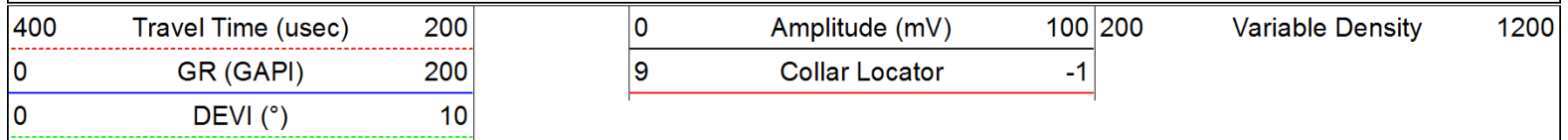
1900

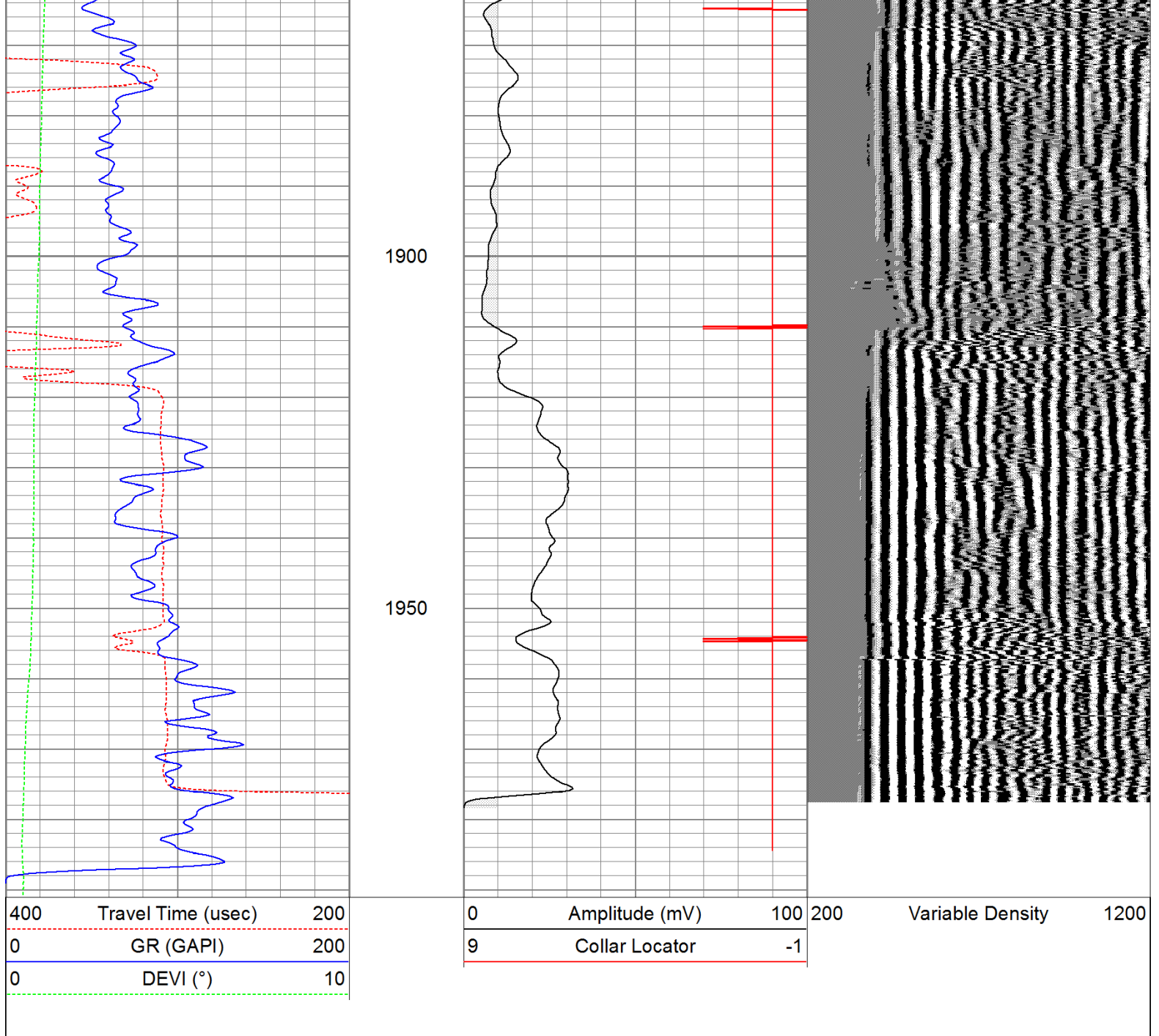




# Repeat Pass

Database File: ac08-1061111b.db  
 Dataset Pathname: pass2.1  
 Presentation Format: cbldig  
 Dataset Creation: Sat Jun 11 09:17:20 2011 by Calc Open-Cased 110302  
 Charted by: Depth in Feet scaled 1:240





Calibration Report		
Database File:	ac08-1061111b.db	
Dataset Pathname:	pass3	
Dataset Creation:	Sat Jun 11 08:23:28 2011 by Log Open-Cased 110302	
Gamma Ray Calibration Report		
Serial Number:	080616	
Tool Model:	275D_INC	
Performed:	Wed May 04 17:31:09 2011	
Calibrator Value:	200.0	GAPI
Background Reading:	50.0	cps
Calibrator Reading:	250.0	cps
Sensitivity:	1.0000	GAPI/cps
Inclinometer Calibration Report		
Performed:	Wed May 04 17:38:51 2011	

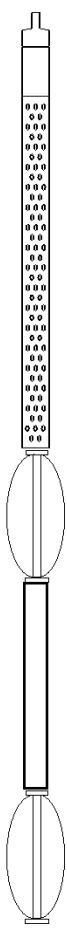
Performed:

Wed May 04 17:59:34 2011

	Low Read.	High Read.	Low Ref.	High Ref.	
X Accelerometer	-3585.20	3595.40	-1.00	1.00	gee
Y Accelerometer	-3619.40	3520.00	-1.00	1.00	gee
Z Accelerometer					

### Cement Bond Log Calibration Report

Serial Number:	081024				
Tool Model:	PROBEDIGITALCBL				
Performed:	Thu Jun 02 14:11:23 2011				
Depth:	45.379	ft			
Casing Diameter:	5.5	in			
	3' Spacing		5' Spacing		
Signal Zero:	0		0		mV
Calibrated Amplitude:	85		85		mV
Reading at Signal Zero:	-0.00598145		-0.00627441		V
Reading in Free Pipe:	1.673		1.23376		V
Gain:	50.6259		68.5462		
Offset:	0.302816		0.430087		

Sensor	Offset (ft)	Schematic	Description	Len (ft)	OD (in)	Wt (lb)
			None	0.75	1.50	5.00
WVF3	14.54		CBL-PROBEDIGITALCBL (081024) PROBE DIGITAL CBL	8.75	2.75	106.50
WVF5	13.54					
			Tekco	2.90	1.69	5.00
CCL	6.40		GR-275D_INC (080616) 2-3/4" GR-CCL with Inclination	4.50	2.75	50.00
ACCX	4.73					
ACCY	4.73		Tekco	2.90	1.69	5.00
ACCZ	4.73					
GR	3.73					

Dataset: ac08-1061111b.db: field/well/run1/pass3  
 Total Length: 19.79 ft  
 Total Weight: 171.50 lb  
 O.D.: 2.75 in

