

The Road to Excellence Starts with Safety

Sold To #: 353810	Ship To #: 2857195	Quote #:	Sales Order #: 8215206
Customer: XTO ENERGY INC EBUSINESS		Customer Rep: Coffee, Ron	
Well Name: Apache Canyon		Well #: 08-10	API/UWI #:
Field:	City (SAP): TRINIDAD	County/Parish: Las Animas	State: Colorado
Contractor: Pense Drilling		Rig/Platform Name/Num: 19	
Job Purpose: Cement Surface Casing			
Well Type: Development Well		Job Type: Cement Surface Casing	
Sales Person: FLING, MATTHEW		Srv Supervisor: WHEELER, JUSTIN	MBU ID Emp #: 196470

Job Personnel

HES Emp Name	Exp Hrs	Emp #	HES Emp Name	Exp Hrs	Emp #	HES Emp Name	Exp Hrs	Emp #
AARON, WESLEY J	3.5	403606	CHAVEZ, ANTHONY P	3.5	479869	CHAVEZ, JEROME Christophe		3.5
PAUMEN, CORD Anthony	3.5	453759	WHEELER, JUSTIN W	3.5	196470			

Equipment

HES Unit #	Distance-1 way	HES Unit #	Distance-1 way	HES Unit #	Distance-1 way	HES Unit #	Distance-1 way
10025030	28 mile	10824253C	28 mile	10948694	28 mile	11338223	28 mile

Job Hours

Date	On Location Hours	Operating Hours	Date	On Location Hours	Operating Hours	Date	On Location Hours	Operating Hours

TOTAL Total is the sum of each column separately

Job

Job Times

Formation Name	Formation Depth (MD) Top	Bottom	Called Out	Date	Time	Time Zone
Form Type		BHST	On Location	01 - Jun - 2011	02:30	MST
Job depth MD	587. ft	Job Depth TVD	Job Started	01 - Jun - 2011	16:54	MST
Water Depth		Wk Ht Above Floor	Job Completed	01 - Jun - 2011	18:02	MST
Perforation Depth (MD) From		To	Departed Loc	01 - Jun - 2011	19:00	MST

Well Data

Description	New / Used	Max pressure psig	Size in	ID in	Weight lbm/ft	Thread	Grade	Top MD ft	Bottom MD ft	Top TVD ft	Bottom TVD ft
11" Openhole				11.				43.	500.		
8 5/8" Surface Casing	Unknown		8.625	8.097	24.			43.			

Tools and Accessories

Type	Size	Qty	Make	Depth	Type	Size	Qty	Make	Depth	Type	Size	Qty	Make
Guide Shoe					Packer					Top Plug			
Float Shoe					Bridge Plug					Bottom Plug			
Float Collar					Retainer					SSR plug set			
Insert Float										Plug Container			
Stage Tool										Centralizers			

Miscellaneous Materials

Gelling Agt		Conc		Surfactant		Conc		Acid Type		Qty		Conc	%
Treatment Fld		Conc		Inhibitor		Conc		Sand Type		Size		Qty	

Fluid Data

Stage/Plug #: 1	Fluid #	Stage Type	Fluid Name	Qty	Qty uom	Mixing Density lbm/gal	Yield ft ³ /sk	Mix Fluid Gal/sk	Rate bbl/min	Total Mix Fluid Gal/sk
-----------------	---------	------------	------------	-----	---------	------------------------	---------------------------	------------------	--------------	------------------------

Stage/Plug #: 1

Stage/Plug #: 1										
Fluid #	Stage Type	Fluid Name	Qty	Qty uom	Mixing Density lbm/gal	Yield ft ³ /sk	Mix Fluid Gal/sk	Rate bbl/min	Total Mix Fluid Gal/sk	
1	FRESH WATER		105	bbl	8.33	.0	.0	.0		
2	Trinidad Surface Blend	TRINIDAD SURFACE BLEND - SBM (137081)	275	sacks	13.5	1.81	8.84	4.0	8.84	
	0.125 lbm	POLY-E-FLAKE (101216940)								
	2 %	CAL-SEAL 60, 50 LB BAG (101217146)								
	2 %	ECONOLITE (100001580)								
	5 lbm	GILSONITE, 50 LB BAG (100001618)								
	0.2 %	VERSASET, 55 LB SK (101376573)								
	6 %	SALT, 100 LB BAG (100003652)								
	8.838 Gal	FRESH WATER								
3	DISPLACEMENT		28.5	bbl	8.33	.0	.0	.0		
Calculated Values		Pressures		Volumes						
Displacement	28.5	Shut In: Instant	75	Lost Returns	No	Cement Slurry	88.6	Pad		
Top Of Cement	Surface	5 Min		Cement Returns	33 bbls	Actual Displacement	28.5	Treatment		
Frac Gradient		15 Min		Spacers	125 bbls	Load and Breakdown		Total Job		
Rates										
Circulating		Mixing		Displacement		Avg. Job				
Cement Left In Pipe	Amount	0 ft	Reason	Shoe Joint						
Frac Ring # 1 @	ID	Frac ring # 2 @	ID	Frac Ring # 3 @	ID	Frac Ring # 4 @	ID			
The Information Stated Herein Is Correct				Customer Representative Signature						

The Road to Excellence Starts with Safety

Sold To #: 353810	Ship To #: 2857195	Quote #:	Sales Order #: 8215206
Customer: XTO ENERGY INC EBUSINESS		Customer Rep: Coffee, Ron	
Well Name: Apache Canyon		Well #: 08-10	API/UWI #:
Field:	City (SAP): TRINIDAD	County/Parish: Las Animas	State: Colorado
Legal Description:			
Lat:		Long:	
Contractor: Pense Drilling		Rig/Platform Name/Num: 19	
Job Purpose: Cement Surface Casing			Ticket Amount:
Well Type: Development Well		Job Type: Cement Surface Casing	
Sales Person: FLING, MATTHEW		Srvc Supervisor: WHEELER, JUSTIN	MBU ID Emp #: 196470

Activity Description	Date/Time	Cht #	Rate bbl/ min	Volume bbl		Pressure psig		Comments
				Stage	Total	Tubing	Casing	
Depart from Service Center or Other Site	06/01/2011 13:30							
Arrive At Loc	06/01/2011 14:30							
Safety Meeting - Pre Rig-Up	06/01/2011 16:30							
Test Lines	06/01/2011 16:55						1269.0	
Pump Spacer	06/01/2011 16:56		4	103	103		70.0	Pump Fresh Water
Shutdown	06/01/2011 17:18							
Other	06/01/2011 17:18							Never gained circulation after pumped 103 bbls of fresh water. Decided to run a LCM spacer to alleviate the issue
Pump Spacer	06/01/2011 17:20		4	26	129		23.0	LCM Gel Spacer
Pump Cement	06/01/2011 17:27		5				18.0	13.5 ppg Trinidad Surface Blend
Shutdown	06/01/2011 17:44						4.0	Shut-Down, Watch For Cement Fallback
Cement Returns to Surface	06/01/2011 17:44		3					33 bbls CMT to the pit
Pump Cement	06/01/2011 17:49		5	89	218			13.5 ppg Trinidad Surface Blend
Pump Displacement - Start	06/01/2011 17:50		3	0			46.0	Pump Fresh Water Displacement
Pump Displacement - End	06/01/2011 18:01			28.6	244.6			
Shut In Well	06/01/2011 18:01						75.0	
Safety Meeting - Pre Rig-Down	06/01/2011 18:30							

Sold To #: 353810

Ship To #: 2857195

Quote #:

Sales Order #:

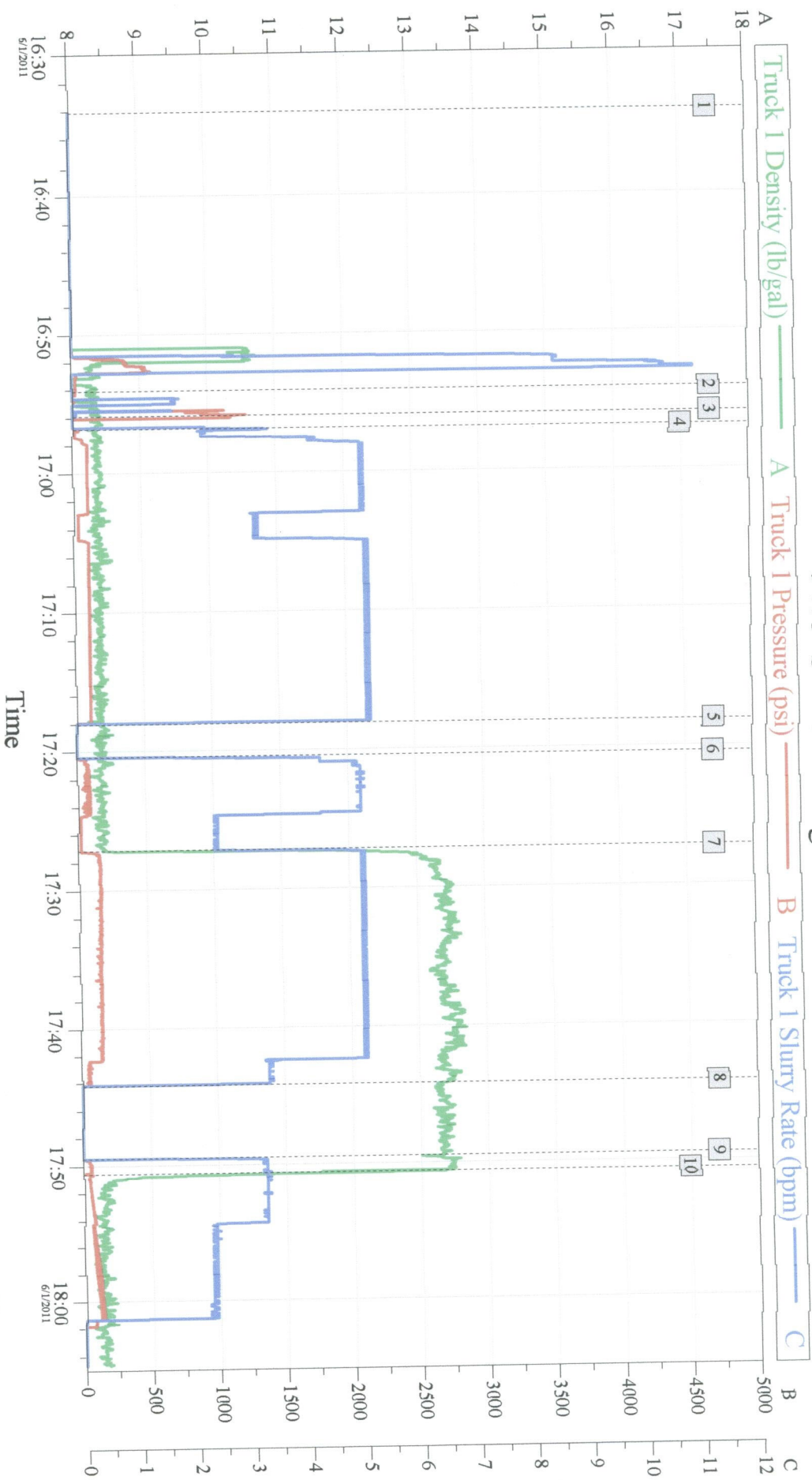
8215206

SUMMIT Version: 7.20.130

Wednesday, June 01, 2011 06:08:00

Activity Description	Date/Time	Cht #	Rate bbl/ min	Volume bbl		Pressure psig		Comments
				Stage	Total	Tubing	Casing	
Safety Meeting - Departing Location	06/01/2011 10:00							

XTO - Apache Canyon 08-10 8 5/8" Surface Casing



Intersection

1	Starting Job
4	Fresh Water Spacer
7	13.5 ppg Trinidad Surface Blend
10	Fresh Water Displacement

Global Event Log

Intersection		TIP		Intersection		TIP	
2	Start Job	3	Test Lines	3	Test Lines	3	Test Lines
5	Shutdown	6	LCM Gel Spacer	6	LCM Gel Spacer	6	LCM Gel Spacer
8	Shutdown	9	13.5 ppg Trinidad Surface Blend	9	13.5 ppg Trinidad Surface Blend	9	13.5 ppg Trinidad Surface Blend
237.1		16:54:06	24.32	16:55:52	1269	16:55:52	1269
13.84		17:18:02	-4.843	17:20:24	-7.909	17:20:24	-7.909
17.28		17:44:14	2.477	17:49:28	-8.898	17:49:28	-8.898

Customer: XTO
Well Description: Apache Canyon 08-10

Job Date: 01-Jun-2011
UWI:

Sales Order #: 8215206

OptiCem v6.4.9
01-Jun-11 18:04