



July 5, 2011

Department of Natural Resources
Oil and Gas Conservation Commission
The Chancery Building
1120 Lincoln St., Suite 801
Denver, CO 80203

Re: **20 Day Certification Letter - 318A-e**
HOWARD 10C-29HZ
Township 1 North, Range 67 West, Section 32: SW/4NE/4
Unit Spacing: 01N-67W-29 W/2SE/4; 01N-67W-32 W/2NE/4
Weld County, Colorado

Ladies/Gentlemen:

Kerr McGee Oil and Gas Onshore LP ("KMG") hereby certify to the Director that KMG owns one-hundred percent (100%) of the mineral rights in the proposed spacing unit. Therefore, KMG respectfully requests the Director to approve the boundary well.

If you have any questions or issues regarding this permit, please contact Cheryl Light at (720) 929-6461.

Very truly yours,

KERR-McGEE OIL AND GAS ONSHORE LP

A handwritten signature in blue ink, reading 'Rebecca Heim'.

Rebecca Heim
Regulatory Analyst II

Enclosure

WELL LOCATION CERTIFICATE: HOWARD 10C-29HZSECTION 32, TOWNSHIP 1 NORTH, RANGE 67 WEST, 6TH P.M. NE SEC. 29
FOUND #6 REBARW 1/4 SEC. 29
3 3/4" ALUM. CAP
ILLEGIBLE

N 00°37'40" W 2634.76'

NOTES:BH LOCATION PROVIDED BY CLIENT.
LAND SURFACE USE-IMPROVED PASTURE
SEE ATTACHED MAP FOR ADDITIONAL
IMPROVEMENTS WITHIN 400'.

PDOP= 2.2

GPS OPERATOR: OWEN MCKEE

29BH- 2180' FSL
2130' FEL

N 07°39'45" W 4708'

(TRUE N 07°16'56" W)

2491'

S 00°43'59" E 5274.46'

NW SEC. 32
2 1/2" ALUM. CAP
LS 22097

N 89°35'46" E 2643.69'

N 89°35'32" E 2656.14'

NE SEC. 32
3 3/4" ALUM. CAP
LS 10377**SURFACE LOCATION**

GROUND ELEVATION= 5057'

NAD83

LATITUDE= 40.007998°

LONGITUDE= 104.910385°

LATITUDE= 40°00'28.793"

LONGITUDE= 104°54'37.386"

BOTTOM HOLE LOCATION

NAD83

LATITUDE= 40.020819°

LONGITUDE= 104.912516°

LATITUDE= 40°01'14.949"

LONGITUDE= 104°54'45.057"

32**HOWARD
10C-29HZ**

1549'

(BASIS OF BEARINGS) SEE NOTE 3
S 00°25'37" E 2638.72'E 1/4 SEC. 32
2 1/2" ALUM. CAP
LS 12374**WELL HOWARD 10C-29HZ TO BE LOCATED 2491' FNL AND 1549' FEL**SW SEC. 32
2 1/2" ALUM. CAP
ILLEGIBLE**LEGEND**

- ⊕ = EXISTING MONUMENT ⊕ = BOTTOM HOLE BH = BOTTOM HOLE
● = PROPOSED WELL ⊕ = EXISTING WELL

NOTES:

1. THIS FIELD SURVEY CONFORMS TO THE MINIMUM STANDARDS SET BY THE C.O.G.C.C., RULE NO. 215
2. HORIZONTAL POSITIONS AND ORTHOMETRIC ELEVATIONS SHOWN AT THE WELL HEAD, ARE BASED ON GPS-RTK POSITIONS DERIVED FROM MINIMUM 2-HOUR STATIC OBSERVATIONS CORRECTED BY THE NATIONAL GEODETIC SURVEY ONLINE POSITIONING USER SERVICE, O.P.U.S. DATUM: HORIZONTAL = NAD83/2007, VERTICAL = NAVD88
3. THE BASIS OF BEARINGS ARE STATE PLANE COORDINATE SYSTEM GRID BEARINGS SHOWN HEREON BETWEEN THE DESCRIBED THE MONUMENTS SHOWN HEREON.
4. GRID DISTANCES ARE SHOWN, AS MEASURED IN THE FIELD, WITH TIES TO WELLS MEASURED PERPENDICULAR TO SECTION LINES.

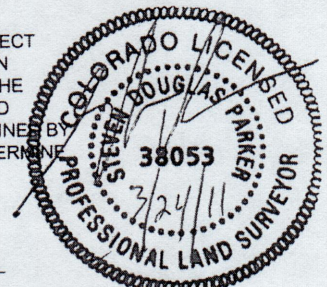
I, STEVEN D. PARKER, A LICENSED PROFESSIONAL LAND SURVEYOR IN THE STATE OF COLORADO DO HEREBY CERTIFY TO **KERR-MCGEE OIL & GAS ONSHORE LP.** THAT THE SURVEY AND WELL LOCATION CERTIFICATE SHOWN HEREON WERE DONE BY ME OR UNDER MY DIRECT SUPERVISION AND THAT THE DRAWING SHOWN HEREON ACCURATELY DEPICTS THE PROPOSED LOCATION OF THE WELL. THIS CERTIFICATE DOES NOT REPRESENT A LAND SURVEY PLAT OR IMPROVEMENT SURVEY PLAT AS DEFINED BY C.R.S. 38-51-102 AND CANNOT BE RELIED UPON TO DETERMINE OWNERSHIP.

STEVEN D. PARKER, PLS 38053
COLORADO LICENSED PROFESSIONAL LAND SURVEYOR
FOR AND ON BEHALF OF P.F.S., LLC

NOTICE: ACCORDING TO COLORADO LAW YOU MUST COMMENCE ANY LEGAL ACTION BASED UPON ANY DEFECT IN THIS SURVEY WITHIN THREE YEARS AFTER YOU FIRST DISCOVER SUCH DEFECT. IN NO EVENT MAY ANY ACTION BASED UPON ANY DEFECT IN THIS SURVEY BE COMMENCED MORE THAN TEN YEARS FROM THIS SAID DATE OF THIS CERTIFICATION SHOWN HEREON.

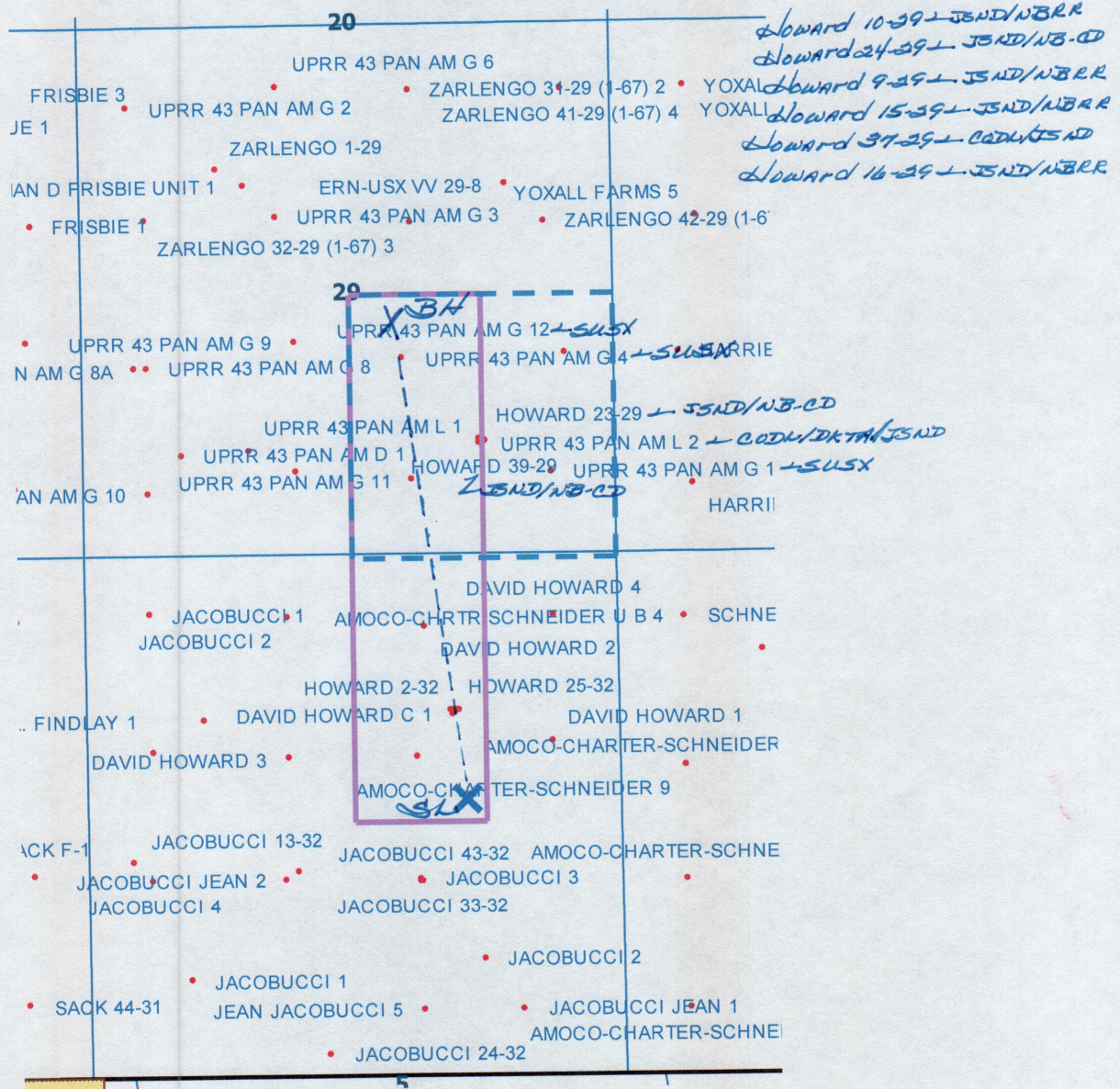
0 500 1000

SCALE: 1"=1000'





PREPARED BY:
PFS
Petroleum Field Services, LLC
1801 W. 13th Ave.
Denver, CO 80204

FIELD DATE: 03-17-11	SURFACE LOCATION: SW 1/4 NE 1/4, SEC. 32, T1N, R67W
DRAWING DATE: 03-24-11	WELD COUNTY, COLORADO
BY: SMF	



LEGEND

-  **Proposed 160 acre Spacing Unit (Solid line).**
-  **Bottom Hole Located NW/4SE/4, Sec. 29-T1N-R67W (Dashed line).**

This 1/4 Section has less than 8 bottom hole wells producing from the Codell, Niobrara & J Sand Formations.