



July 5, 2011

Department of Natural Resources
Oil and Gas Conservation Commission
The Chancery Building
1120 Lincoln St., Suite 801
Denver, CO 80203

Re: **20 Day Certification Letter - 318A-e**
HOWARD 9C-29HZ
Township 1 North, Range 67 West, Section 32: SW/4NE/4
Unit Spacing: 01N-67W-29 E/2SE/4; 01N-67W-32 E/2NE/4
Weld County, Colorado

Ladies/Gentlemen:

Kerr McGee Oil and Gas Onshore LP ("KMG") hereby certify to the Director that KMG owns one-hundred percent (100%) of the mineral rights in the proposed spacing unit. Therefore, KMG respectfully requests the Director to approve the boundary well.

If you have any questions or issues regarding this permit, please contact Cheryl Light at (720) 929-6461.

Very truly yours,

KERR-McGEE OIL AND GAS ONSHORE LP

A handwritten signature in blue ink that reads 'Rebecca Heim'.

Rebecca Heim
Regulatory Analyst II

Enclosure

WELL LOCATION CERTIFICATE: HOWARD 9C-29HZ

SECTION 32, TOWNSHIP 1 NORTH, RANGE 67 WEST, 6TH P.M.

NE SEC. 29
FOUND
#6 REBAR

W 1/4 SEC. 29
3/4" ALUM. CAP
ILLEGIBLE

N 00°37'40" W 2634.76'

29

NOTES:
BH LOCATION PROVIDED BY CLIENT.
LAND SURFACE USE-IMPROVED PASTURE
SEE ATTACHED MAP FOR ADDITIONAL
IMPROVEMENTS WITHIN 400'.

PDOP= 2.2
GPS OPERATOR: OWEN MCKEE

BH- 2180' FSL
510' FEL

S 00°43'59" E 5274.46'

N 11°24'43" E 4772'
(TRUE N 11°47'44" E)

NW SEC. 32
2 1/2" ALUM. CAP
LS 22097

N 89°35'46" E 2643.69'

N 89°35'32" E 2656.14'

NE SEC. 32
3/4" ALUM. CAP
LS 10377

N 1/4 SEC. 32
3/4" ALUM. CAP
LS 13258

SURFACE LOCATION
GROUND ELEVATION= 5057'
NAD83
LATITUDE= 40.007998°
LONGITUDE= 104.910214°

LATITUDE= 40°00'28.793"
LONGITUDE= 104°54'36.769"

BOTTOM HOLE LOCATION
NAD83
LATITUDE= 40.020821°
LONGITUDE= 104.906731°

LATITUDE= 40°01'14.956"
LONGITUDE= 104°54'24.233"

32

HOWARD
9C-29HZ

(BASIS OF BEARINGS) SEE NOTE 3
S 00°25'37" E 2638.72'

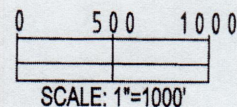
E 1/4 SEC. 32
2 1/2" ALUM. CAP
LS 12374

WELL HOWARD 9C-29HZ TO BE LOCATED 2491' FNL AND 1501' FEL

SW SEC. 32
2 1/2" ALUM. CAP
ILLEGIBLE

LEGEND

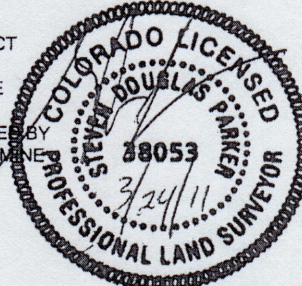
- = EXISTING MONUMENT ◆ = BOTTOM HOLE BH = BOTTOM HOLE
● = PROPOSED WELL ◆ = EXISTING WELL



- NOTES:
1. THIS FIELD SURVEY CONFORMS TO THE MINIMUM STANDARDS SET BY THE C.O.G.C.C., RULE NO. 215
 2. HORIZONTAL POSITIONS AND ORTHOMETRIC ELEVATIONS SHOWN AT THE WELL HEAD, ARE BASED ON GPS-RTK POSITIONS DERIVED FROM MINIMUM 2-HOUR STATIC OBSERVATIONS CORRECTED BY THE NATIONAL GEODETIC SURVEY ONLINE POSITIONING USER SERVICE, O.P.U.S. DATUM: HORIZONTAL = NAD83/2007, VERTICAL = NAVD88
 3. THE BASIS OF BEARINGS ARE STATE PLANE COORDINATE SYSTEM GRID BEARINGS SHOWN HEREON BETWEEN THE DESCRIBED THE MONUMENTS SHOWN HEREON.
 4. GRID DISTANCES ARE SHOWN, AS MEASURED IN THE FIELD, WITH TIES TO WELLS MEASURED PERPENDICULAR TO SECTION LINES.

I, STEVEN D. PARKER, A LICENSED PROFESSIONAL LAND SURVEYOR IN THE STATE OF COLORADO DO HEREBY CERTIFY TO **KERR-MCGEE OIL & GAS ONSHORE LP**, THAT THE SURVEY AND WELL LOCATION CERTIFICATE SHOWN HEREON WERE DONE BY ME OR UNDER MY DIRECT SUPERVISION AND THAT THE DRAWING SHOWN HEREON ACCURATELY DEPICTS THE PROPOSED LOCATION OF THE WELL. THIS CERTIFICATE DOES NOT REPRESENT A LAND SURVEY PLAT OR IMPROVEMENT SURVEY PLAT AS DEFINED BY C.R.S. 38-51-102 AND CANNOT BE RELIED UPON TO DETERMINE OWNERSHIP.

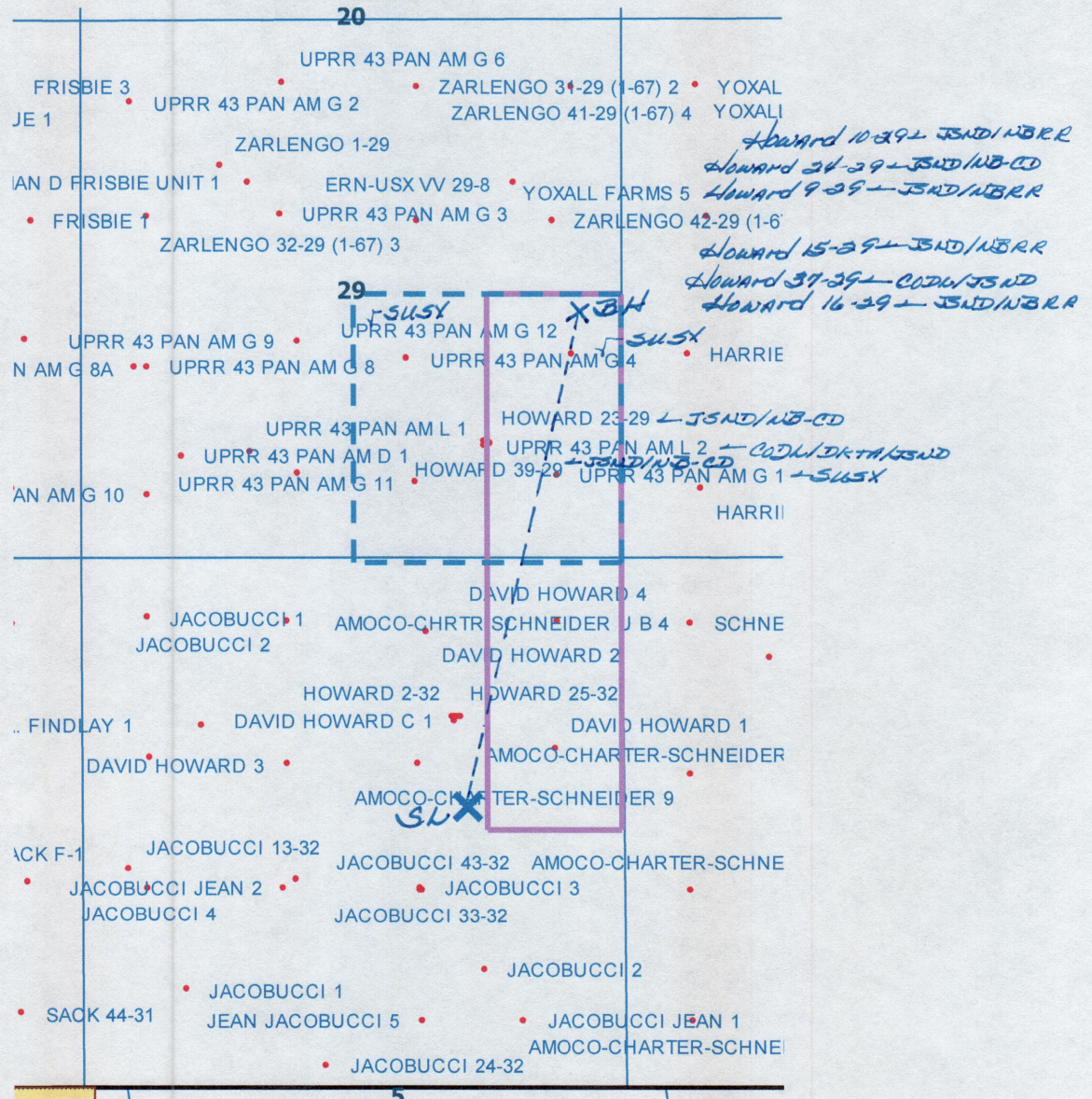
STEVEN D. PARKER, PLS 38053
COLORADO LICENSED PROFESSIONAL LAND SURVEYOR
FOR AND ON BEHALF OF P.F.S., LLC



PREPARED BY:	FIELD DATE:	SURFACE LOCATION:
	03-17-11	SW 1/4 NE 1/4,
	DRAWING DATE:	SEC. 32, T1N, R67W
	03-24-11	
BY:		WELD COUNTY, COLORADO
SMF		

NOTICE: ACCORDING TO COLORADO LAW YOU MUST COMMENCE ANY LEGAL ACTION BASED UPON ANY DEFECT IN THIS SURVEY WITHIN THREE YEARS AFTER YOU FIRST DISCOVER SUCH DEFECT. IN NO EVENT MAY ANY ACTION BASED UPON ANY DEFECT IN THIS SURVEY BE COMMENCED MORE THAN TEN YEARS FROM THIS SAID DATE OF THIS CERTIFICATION SHOWN HEREON.

HOWARD 9C-29HZ SWNE Sec. 32 T1N-R67W



LEGEND



Proposed 160 acre Spacing Unit (Solid line).



Bottom Hole Located NE/4SE/4, Sec. 29-T1N-R67W (Dashed line).

This 1/4 Section has less than 8 bottom hole wells producing from the Codell, Niobrara & J Sand Formations.