

---

# **OXY GRAND JUNCTION EBUSINESS**

---

**CC 697-05-78A  
GRAND VALLEY  
Garfield County , Colorado**

**Cement Surface Casing  
02-Jun-2011**

**Post Job Report**

## The Road to Excellence Starts with Safety

|  |  |                         |                        |
|--|--|-------------------------|------------------------|
| Sold To #: 344034                                    | Ship To #: 2857362                                       | Quote #:                | Sales Order #: 8207305 |
| Customer: OXY GRAND JUNCTION EBUSINESS               | Customer Rep: COOMBS, HENRY                              |                         |                        |
| Well Name: CC  | Well #: 697-05-78A                                       | API/UWI #: 05-045-18731 |                        |
| Field: GRAND VALLEY                                  | City (SAP): PARACHUTE                                    | County/Parish: Garfield | State: Colorado        |
| Lat: N 39.542 deg. OR N 39 deg. 32 min. 31.294 secs. | Long: W 108.238 deg. OR W -109 deg. 45 min. 42.732 secs. |                         |                        |
| Contractor: H&P Drilling                             | Rig/Platform Name/Num: H&P 353                           |                         |                        |
| Job Purpose: Cement Surface Casing                   |  |                         |                        |
| Well Type: Development Well                          | Job Type: Cement Surface Casing                          |                         |                        |
| Sales Person: ROYSTER, JACOB                         | Srvc Supervisor: ANGLESTEIN, TROY                        | MBU ID Emp #: 436099    |                        |

## Job Personnel

| HES Emp Name                  | Exp Hrs | Emp #  | HES Emp Name    | Exp Hrs | Emp #  | HES Emp Name            | Exp Hrs | Emp #  |
|-------------------------------|---------|--------|-----------------|---------|--------|-------------------------|---------|--------|
| ANGLESTEIN, TROY<br>Edward WM | 17      | 436099 | GOWEN, WESLEY M | 17      | 496205 | JENSEN, JESSE<br>Robert | 17      | 478774 |
| SILVERTHORN,<br>AARON Jacob   | 17      | 491305 | WINKER, STEVEN  | 17      | 478776 | YUTZY, BRIAN<br>Matthew | 17      | 478510 |

## Equipment

| HES Unit # | Distance-1 way | HES Unit # | Distance-1 way | HES Unit # | Distance-1 way | HES Unit # | Distance-1 way |
|------------|----------------|------------|----------------|------------|----------------|------------|----------------|
| 10053558   | 120 mile       | 10783493   | 120 mile       | 10822007   | 120 mile       | 10938665   | 120 mile       |
| 10938677   | 120 mile       | 10951250   | 120 mile       | 10973565   | 120 mile       | 10988978   | 120 mile       |
| 11360871   | 120 mile       | 11542767   | 120 mile       | 6543       | 120 mile       |            |                |

## Job Hours

| Date     | On Location Hours | Operating Hours | Date     | On Location Hours | Operating Hours | Date | On Location Hours | Operating Hours |
|----------|-------------------|-----------------|----------|-------------------|-----------------|------|-------------------|-----------------|
| 6/1/2011 | 5                 | 0               | 6/2/2011 | 10                | 6               |      |                   |                 |

TOTAL Total is the sum of each column separately

## Job

| Formation Name         | Top      | Bottom            | Called Out    | Date            | Time  | Time Zone |
|------------------------|----------|-------------------|---------------|-----------------|-------|-----------|
| Formation Depth (MD)   |          |                   | On Location   | 01 - Jun - 2011 | 12:00 | MST       |
| Form Type              |          | BHST              | Job Started   | 01 - Jun - 2011 | 17:00 | MST       |
| Job depth MD           | 2725. ft | Job Depth TVD     | Job Completed | 02 - Jun - 2011 | 02:08 | MST       |
| Water Depth            |          | Wk Ht Above Floor | Deparied Loc  | 02 - Jun - 2011 | 08:32 | MST       |
| Perforation Depth (MD) | From     | To                |               | 02 - Jun - 2011 | 10:00 | MST       |

## Well Data

| Description    | New / Used | Max pressure psig | Size in | ID in | Weight lbm/ft | Thread | Grade | Top MD ft | Bottom MD ft | Top TVD ft | Bottom TVD ft |
|----------------|------------|-------------------|---------|-------|---------------|--------|-------|-----------|--------------|------------|---------------|
| OPEN HOLE      |            |                   |         | 14.75 |               |        |       | .         | 2725.        |            |               |
| SURFACE CASING | Unknown    |                   | 9.625   | 8.921 | 36.           |        | H-40  | .         | 2715.        |            |               |

Sales/Rental/3<sup>rd</sup> Party (HES)

| Description                              | Qty | Qty uom | Depth | Supplier |
|--|-----|---------|-------|----------|
| PLUG,CMTG,TOP,9 5/8,HWE,8.16 MIN/9.06 MA | 1   | EA      |       |          |

## Tools and Accessories

| Type         | Size | Qty | Make | Depth | Type        | Size | Qty | Make | Depth | Type           | Size  | Qty | Make |
|--------------|------|-----|------|-------|-------------|------|-----|------|-------|----------------|-------|-----|------|
| Guide Shoe   |      |     |      |       | Packer      |      |     |      |       | Top Plug       | 9.625 | 1   | HES  |
| Float Shoe   |      |     |      |       | Bridge Plug |      |     |      |       | Bottom Plug    |       |     |      |
| Float Collar |      |     |      |       | Retainer    |      |     |      |       | SSR plug set   |       |     |      |
| Insert Float |      |     |      |       |             |      |     |      |       | Plug Container | 9.625 | 1   | HES  |
| Stage Tool   |      |     |      |       |             |      |     |      |       | Centralizers   |       |     |      |

## Miscellaneous Materials

| Gelling Agt   | Conc | Surfactant | Conc | Acid Type | Qty  | Conc | %   |
|---------------|------|------------|------|-----------|------|------|-----|
| Treatment Fld | Conc | Inhibitor  | Conc | Sand Type | Size |      | Qty |

## Fluid Data

Stage/Plug #: 1

| Fluid #                                  | Stage Type    | Fluid Name                    | Qty         | Qty uom                           | Mixing Density lbm/gal | Yield ft <sup>3</sup> /sk | Mix Fluid Gal/sk | Rate bbl/min | Total Mix Fluid Gal/sk |
|--|---------------|-------------------------------|-------------|-----------------------------------|------------------------|---------------------------|------------------|--------------|------------------------|
| 1  | Water Spacer  |                               | 20.00       | bbl                               | 8.33                   | .0                        | .0               | 6            |                        |
| 2  | Gel Spacer    |                               | 20.00       | bbl                               | .                      | .0                        | .0               | 6            |                        |
| 3  | Water Spacer  |                               | 20.00       | bbl                               | .                      | .0                        | .0               | 6            |                        |
| 4  | Lead Cement   | VERSACEM (TM) SYSTEM (452010) | 800.0       | sacks                             | 12.3                   | 2.33                      | 12.62            | 6            | 12.62                  |
|  |               | 12.62 Gal                     | FRESH WATER |                                   |                        |                           |                  |              |                        |
| 5  | Tail Cement   | VERSACEM (TM) SYSTEM (452010) | 150.0       | sacks                             | 12.8                   | 2.07                      | 10.67            | 6            | 10.67                  |
|  |               | 10.67 Gal                     | FRESH WATER |                                   |                        |                           |                  |              |                        |
| 6  | Displacement  |                               | 206.00      | bbl                               | .                      | .0                        | .0               | 6            |                        |
| 7  | Topout Cement | HALCEM (TM) SYSTEM (452986)   | 63          | sacks                             | 12.5                   | 1.97                      | 10.96            | 2            | 10.96                  |
|  |               | 10.96 Gal                     | FRESH WATER |                                   |                        |                           |                  |              |                        |
| <b>Calculated Values</b>                 |               | <b>Pressures</b>              |             |                                   | <b>Volumes</b>         |                           |                  |              |                        |
| Displacement                             | 206.1         | Shut In: Instant              |             | Lost Returns                      | 202                    | Cement Slurry             | 491              | Pad          |                        |
| Top Of Cement                            | SURFACE       | 5 Min                         |             | Cement Returns                    | 88                     | Actual Displacement       | 206.1            | Treatment    |                        |
| Frac Gradient                            |               | 15 Min                        |             | Spacers                           | 60                     | Load and Breakdown        |                  | Total Job    | 825                    |
| <b>Rates</b>                             |               |                               |             |                                   |                        |                           |                  |              |                        |
| Circulating                              | 5.9           | Mixing                        | 6           | Displacement                      | 6                      | Avg. Job                  | 6                |              |                        |
| Cement Left In Pipe                      | Amount        | 48.2 ft                       | Reason      | Shoe Joint                        |                        |                           |                  |              |                        |
| Frac Ring # 1 @                          | ID            | Frac ring # 2 @               | ID          | Frac Ring # 3 @                   | ID                     | Frac Ring # 4 @           | ID               |              |                        |
| The Information Stated Herein Is Correct |               |                               |             | Customer Representative Signature |                        |                           |                  |              |                        |

*The Road to Excellence Starts with Safety*

|   |                              |   |                               |
|---|------------------------------|---|-------------------------------|
| <b>Sold To #:</b> 344034                                    | <b>Ship To #:</b> 2857362    | <b>Quote #:</b>   | <b>Sales Order #:</b> 8207305 |
| <b>Customer:</b> OXY GRAND JUNCTION EBUSINESS               |                              | <b>Customer Rep:</b> COOMBS, HENRY                              |                               |
| <b>Well Name:</b> CC  | <b>Well #:</b> 697-05-78A    | <b>API/UWI #:</b> 05-045-18731                                  |                               |
| <b>Field:</b> GRAND VALLEY                                  | <b>City (SAP):</b> PARACHUTE | <b>County/Parish:</b> Garfield                                  | <b>State:</b> Colorado        |
| <b>Legal Description:</b>                                   |                              |   |                               |
| <b>Lat:</b> N 39.542 deg. OR N 39 deg. 32 min. 31.294 secs. |                              | <b>Long:</b> W 108.238 deg. OR W -109 deg. 45 min. 42.732 secs. |                               |
| <b>Contractor:</b> H&P Drilling                             |                              | <b>Rig/Platform Name/Num:</b> H&P 353                           |                               |
| <b>Job Purpose:</b> Cement Surface Casing                   |                              |   | <b>Ticket Amount:</b>         |
| <b>Well Type:</b> Development Well                          |                              | <b>Job Type:</b> Cement Surface Casing                          |                               |
| <b>Sales Person:</b> ROYSTER, JACOB                         |                              | <b>Srvc Supervisor:</b> ANGLESTEIN, TROY                        | <b>MBU ID Emp #:</b> 436099   |

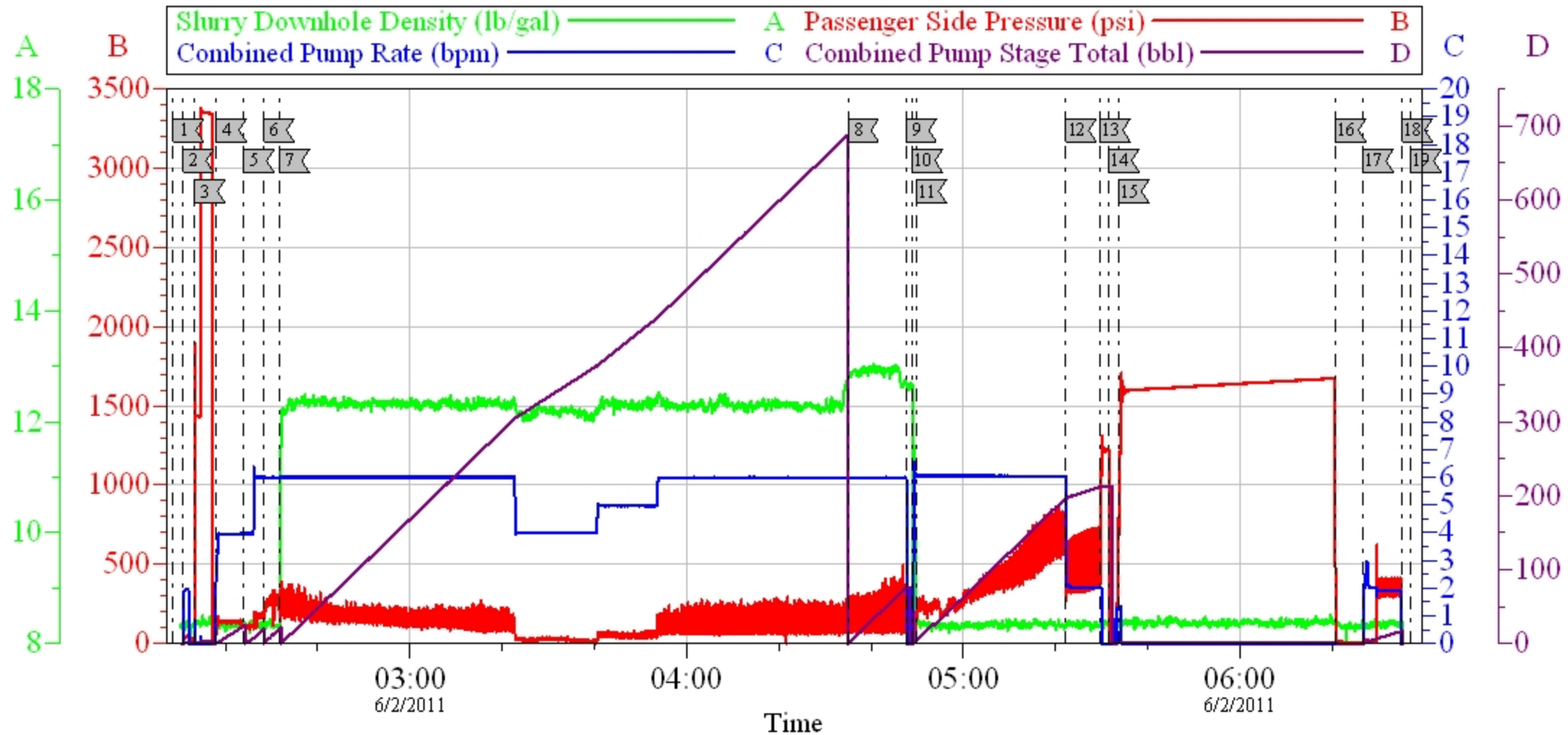
| Activity Description                  | Date/Time           | Cht # | Rate bbl/min | Volume bbl |       | Pressure psig |        | Comments  |
|---------------------------------------|---------------------|-------|--------------|------------|-------|---------------|--------|---|
|                                       |                     |       |              | Stage      | Total | Tubing        | Casing |   |
| Call Out                              | 06/01/2011<br>12:00 |       |              |            |       |               |        | NO TRUCKS WERE TOWED ON WAY TO LOCATION. LEFT BOTTOM GUARD SHACK AT 15:30 ARRIVED ON LOCATION AT 17:00, PRE-LOAD TRUCKS STAYED ON LOCATION FOR DURATION OF JOB. |
| Pre-Convoy Safety Meeting             | 06/01/2011<br>13:30 |       |              |            |       |               |        | ALL HES EMPLOYEES   |
| Arrive At Loc                         | 06/01/2011<br>17:00 |       |              |            |       |               |        | RIG STILL RUNNING CASING CIRCULATED FOR 1 HOUR  |
| Assessment Of Location Safety Meeting | 06/01/2011<br>17:15 |       |              |            |       |               |        | ALL HES EMPLOYEES   |
| Rig-Up Equipment                      | 06/02/2011<br>01:00 |       |              |            |       |               |        | 1 HT 400 PUMP TRUCK, 1 660 BULK TRUCK, 1 FIELD SILO, 1 FIELD BIN, 1 9.625 QUICK LATCH PLUG CONTAINER, 1 F450 P/U  |
| Pre-Job Safety Meeting                | 06/02/2011<br>01:50 |       |              |            |       |               |        | ALL HES EMPLOYEES, RIG CREW, CO REP.  |
| Start Job                             | 06/02/2011<br>02:08 |       |              |            |       |               |        | 9.625 CASING SET AT 2715', FC 2666.82', TD: 2725', OPEN HOLE 14.75", MUD WT 10 PPG, 800 BBLS OF H2O ON LOCATION, WATER SAMPLE SUBMITTED.                        |

| Activity Description      | Date/Time        | Cht # | Rate bbl/min | Volume bbl |       | Pressure psig |        | Comments   |
|---------------------------|------------------|-------|--------------|------------|-------|---------------|--------|--|
|                           |                  |       |              | Stage      | Total | Tubing        | Casing |  |
| Pump Water                | 06/02/2011 02:10 |       | 2            | 2          |       |               | 55.0   | FILL LINES   |
| Pressure Test             | 06/02/2011 02:13 |       | 0.5          | 0.5        |       | 3252.0        |        | NO LEAKS   |
| Pump Spacer 1             | 06/02/2011 02:17 |       | 6            | 20         |       |               | 139.0  | FRESH WATER  |
| Pump Spacer 2             | 06/02/2011 02:23 |       | 6            | 20         |       |               | 180.0  | GELLED SPACER 2.5 GAL OF LGC PER 10 BBLS   |
| Pump Spacer 1             | 06/02/2011 02:28 |       | 6            | 20         |       |               | 170.0  | FRESHWATER   |
| Pump Lead Cement          | 06/02/2011 02:31 |       | 6            | 435.7      |       |               | 130.0  | 1050 SKS VERSACEM CMT TO BE MIXED AT 12.3 PPG, 2.33 YIELD, 12.62 GAL/SK, TUFF FIBER ADDED ON THE FLY BARREL COUNTER ON ELITE READ 200 BBLS HIGHER THAN CALCULATED VOLUME. STAGE MIX WATER VOLUME SHOWED AROUND 13900 GAL HES SLOWED RATE TO 4 BPM PER CO REP FOR 20 MIN. |
| Pump Tail Cement          | 06/02/2011 04:35 |       | 6            | 55.3       |       |               | 189.0  | 150 SKS VERSACEM CMT TO BE MIXED AT 12.8 PPG, 2.07 YIELD, 10.67 GAL/SK, CMT TO BE WEIGHED VIA PRESSURE BALANCED MUD SCALES. WET AND DRY SAMPLES SUBMITTED.   |
| Cement Returns to Surface | 06/02/2011 04:40 |       | 6            | 5          |       |               | 164.0  | GOT SLIGHT CEMENT RETURNS DURING TAIL CEMENT AND INTO FIRST 30 BBLS OF DISPLACEMENT  |
| Shutdown                  | 06/02/2011 04:47 |       |              |            |       |               |        | FOR NO MORE THEN 5 MINUTES,  |
| Drop Plug                 | 06/02/2011 04:48 |       |              |            |       |               |        | PLUG LAUNCHED  |

## Cementing Job Log

| Pump Displacement                      | 06/02/2011<br>04:49 |       | 6            | 206.1      |       |               | 600.0  | FRESHWATER. LOST RETURNS 30 BBLS INTO DISPLACEMENT NEVER GOT THEM BACK          |
|--|---------------------|-------|--------------|------------|-------|---------------|--------|---|
| Activity Description                   | Date/Time           | Cht # | Rate bbl/min | Volume bbl |       | Pressure psig |        | Comments  |
|  |                     |       |              | Stage      | Total | Tubing        | Casing |   |
| Slow Rate                              | 06/02/2011<br>05:22 |       | 2            | 196        |       |               | 490.0  | 10 BBLS PRIOR TO CALCULATED DISPLACEMENT  |
| Bump Plug                              | 06/02/2011<br>05:29 |       | 2            | 206.1      |       |               | 550.0  | PLUG LANDED AT 1150 HELD FOR TWO MINUTES  |
| Check Floats                           | 06/02/2011<br>05:31 |       |              |            |       |               |        | FLOATS HOLDING  |
| Pressure Up Well                       | 06/02/2011<br>05:33 |       |              |            |       |               | 1500.0 | PRESSURE UP TO 1500 PSI AND HOLD FOR 30 MIN CASING TEST                         |
| Other                                  | 06/02/2011<br>06:26 |       | 1            | 15         |       |               | 445.0  | PUMP 15 BBLS OF SUGAR WATER DOWN PARASITE. PRESSURE PEAKED AT 445 THEN FELL OFF |
| End Job                                | 06/02/2011<br>06:37 |       |              |            |       |               |        | END OF INTIAL JOB   |
| Start Job                              | 06/02/2011<br>08:03 |       |              |            |       |               |        | HES RIGGED UP TO PUMP TOPOUT CEMENT   |
| Pump Cap Cement                        | 06/02/2011<br>08:09 |       | 2            | 22         |       |               | 70.0   | HES PUMPED 22 BBLS OF TOPOUT CEMENT MIXED AT 12.5 PPG WITH 8 BBLS TO SURFACE.   |
| Shutdown                               | 06/02/2011<br>08:32 |       |              |            |       |               |        |   |
| End Job                                | 06/02/2011<br>08:33 |       |              |            |       |               |        | THANK YOU FOR USING HALLIBURTON FROM TROY ANGLESTEIN AND CREW                   |
| Post-Job Safety Meeting (Pre Rig-Down) | 06/02/2011<br>08:50 |       |              |            |       |               |        | ALL HES EMPLOYEES   |
| Rig-Down Equipment                     | 06/02/2011<br>09:00 |       |              |            |       |               |        | SAFELY  |
| Pre-Convoy Safety Meeting              | 06/02/2011<br>09:45 |       |              |            |       |               |        | ALL HES EMPLOYEES   |
| Crew Leave Location                    | 06/02/2011<br>10:00 |       |              |            |       |               |        | SITE WAS AS CLEAN AS WHEN WE ARRIVED  |

# OXY CC 697-05-78A SURFACE



| Local Event Log |                    |          |    |                  |          |
|-----------------|--------------------|----------|----|------------------|----------|
| 1               | START JOB          | 02:08:38 | 2  | FILL LINES       | 02:10:49 |
| 3               | TEST LINES         | 02:13:17 | 4  | PUMP H2O SPACER  | 02:17:56 |
| 5               | PUMP GELLED SPACER | 02:23:57 | 6  | PUMP H2O SPACER  | 02:28:18 |
| 7               | PUMP LEAD CEMENT   | 02:31:35 | 8  | PUMP TAIL CEMENT | 04:35:01 |
| 9               | SHUTDOWN           | 04:47:36 | 10 | DROP PLUG        | 04:48:56 |
| 11              | PUMP DISPLACEMENT  | 04:49:45 | 12 | SLOW RATE        | 05:22:16 |
| 13              | BUMP PLUG          | 05:29:38 | 14 | CHECK FLOATS     | 05:31:34 |
| 15              | PRESSURE UP WELL   | 05:33:44 | 16 | RELEASE PRESSURE | 06:20:43 |
| 17              | PUMP DOWN PARASITE | 06:26:44 | 18 | SHUTDOWN         | 06:35:11 |
| 19              | END JOB            | 06:37:07 |    |                  |          |

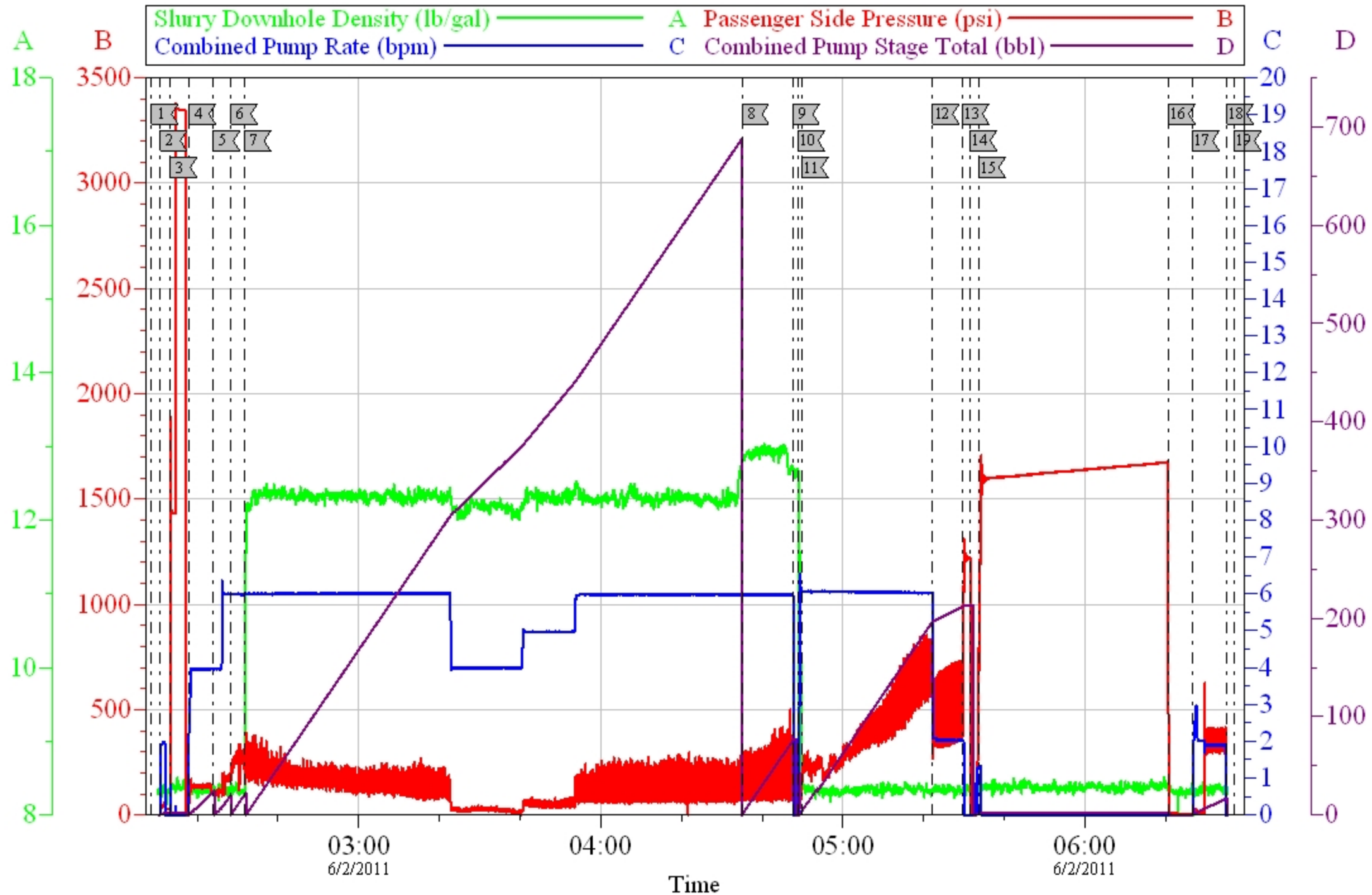
Customer: OXY  
Well Description: CC 697-05-78A  
Company Rep: Henry Coombs

Job Date: 02-Jun-2011  
Job Type: Surface  
Cement Supervisor: Troy Anglestein

Sales Order #: 8207305  
ADC Used: Yes  
Elite # 1: Jesse Jensen

OptiCern v6.4.9  
02-Jun-11 07:34

# OXY CC 697-05-78A SURFACE



Customer: OXY  
Well Description: CC 697-05-78A  
Company Rep: Henry Coombs

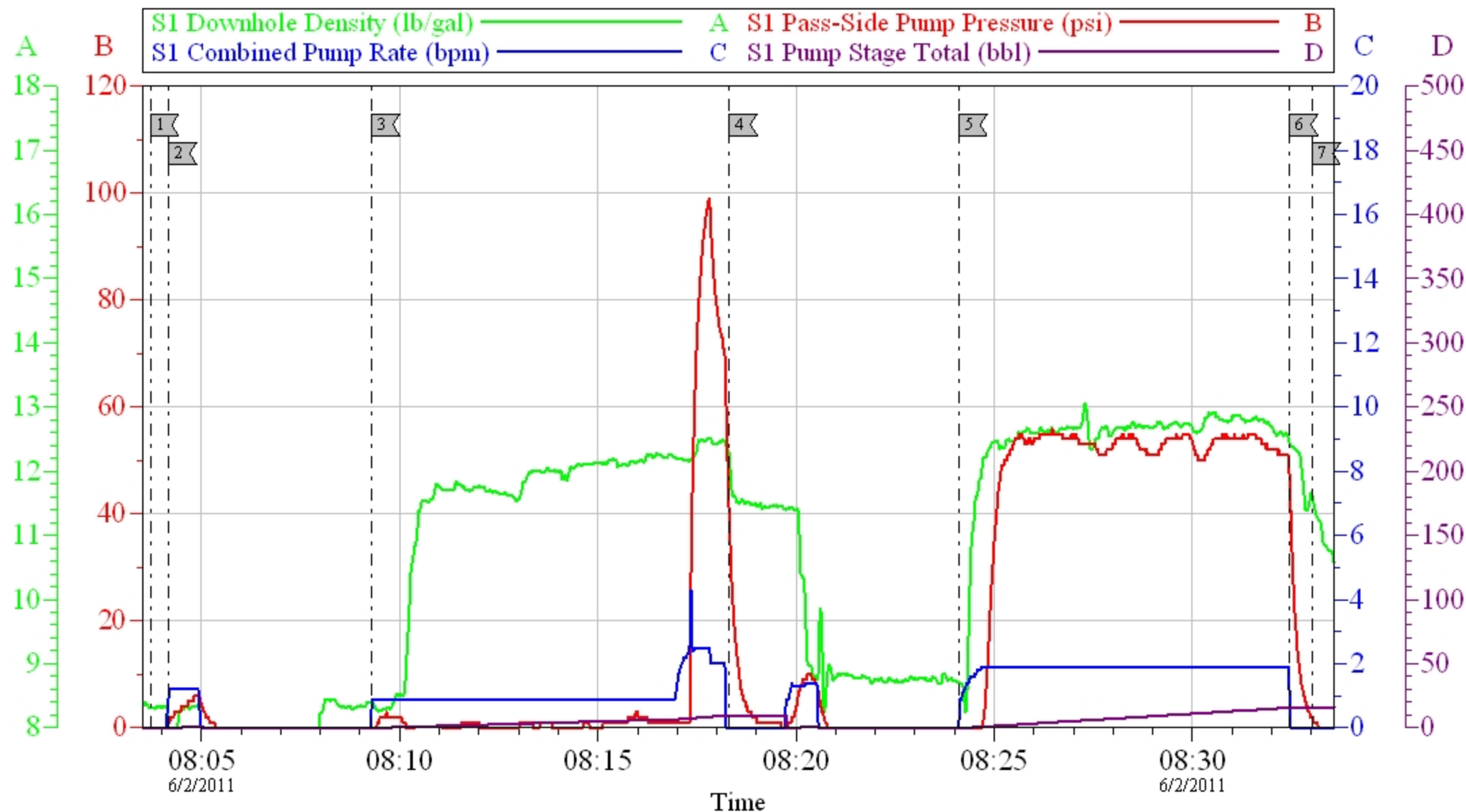
Job Date: 02-Jun-2011  
Job Type: Surface  
Cement Supervisor: Troy Anglestein

Sales Order #: 8207305  
ADC Used: Yes  
Elite # 1: Jesse Jensen

OptiCern v6.4.9  
02-Jun-11 07:35



# OXY CC 697-05-78A TOPOUT



Customer: OXY  
Well Description: CC 697-05-78A  
Company Rep: HENRY COOMBS

Job Date: 02-Jun-2011  
Job Type: TOPOUT  
Cement Supervisor: TROY ANGLESTEIN

Sales Order #: 8207305  
ADC Used: YES  
Elite #: 1 JESSE JENSEN

OptiCern v6.4.9  
02-Jun-11 08:40

| EVENT #                     | EVENT                  | VOLUME                                | SACKS               | WEIGHT             | YIELD  | GAL/ SK  |
|-----------------------------|------------------------|---------------------------------------|---------------------|--------------------|--------|----------|
| 1                           | Start Job              |                                       |                     |                    |        |          |
| 6                           | Test Lines             | 2500 PSI                              |                     |                    |        |          |
| 9                           | H2O Spacer             | 20.0                                  |                     |                    |        |          |
| 10                          | Gelled Spacer          | 20.0                                  |                     |                    |        |          |
| 9                           | H2O Spacer             | 20.0                                  |                     |                    |        |          |
| 13                          | Lead Cement            | 435.7                                 | 1050                | 12.3               | 2.33   | 12.62    |
| 15                          | Tail Cement            | 55.3                                  | 150                 | 12.8               | 2.07   | 10.67    |
|                             | Shut Down              | 0.0                                   |                     |                    |        |          |
| 22                          | Drop Plug              | 0.0                                   |                     |                    |        |          |
| 23                          | Displace With H2O      | 206.1                                 |                     | SLOW RATE TO 2 BPM |        |          |
| 26                          | Land Plug              | 560 PSI                               | 500 PSI Over        |                    |        |          |
| 2                           | Release Psi / Job Over | 0.0                                   |                     |                    |        |          |
|                             |                        |                                       |                     |                    |        |          |
|                             |                        |                                       | Do Not Overdisplace |                    |        |          |
| DISPLACEMENT                | TOTAL PIPE             | SHOE JOINT LENGTH                     |                     | FLOAT COLLAR       | BBL/FT | H2O REQ. |
| 206.15                      | 2715                   | 48.18                                 |                     | 2666.82            | 0.0773 | 620      |
| PSI to Lift Pipe            | 1138                   | *****Use Mud Scales on Each Tier***** |                     |                    |        |          |
| Total Displacement          | 206.15                 |                                       |                     |                    |        |          |
| CALCULATED DIFFERENTIAL PSI |                        | 560                                   |                     | TOTAL FLUID PUMPED |        | 788      |
| Collapse                    |                        | Burst                                 |                     |                    | SO#    | 8207305  |

|  |  |  |
|--|--|--|
| <b>Sales Order #:</b><br>8207305                 | <b>Line Item:</b><br>10                          | <b>Survey Conducted Date:</b><br>6/2/2011                  |
| <b>Customer:</b><br>OXY GRAND JUNCTION EBUSINESS |  | <b>Job Type (BOM):</b><br>CMT SURFACE CASING BOM           |
| <b>Customer Representative:</b><br>HENRY COOMBS  |  | <b>API / UWI: (leave blank if unknown)</b><br>05-045-18731 |
| <b>Well Name:</b><br>CC                          |  | <b>Well Number:</b><br>697-05-78A                          |
| <b>Well Type:</b><br>Development Well            | <b>Well Country:</b><br>United States of America |  |
| <b>H2S Present:</b>                              | <b>Well State:</b><br>Colorado                   | <b>Well County:</b><br>Garfield                            |

Dear Customer,

We hope that you were satisfied with the service quality of this job performed by Halliburton. It is the aim of our management and service personnel to deliver equipment and service of a standard unmatched in the service sector of the energy industry.

Please take the time to let us know if our performance met with your satisfaction. Please be as critical as possible to ensure we constantly improve our service. Your comments are of great value to us and are intended for the exclusive use of Halliburton.

### CUSTOMER SATISFACTION SURVEY

| CATEGORY                | CUSTOMER SATISFACTION RESPONSE                                       |                           |
|-------------------------|--|---------------------------|
| Survey Conducted Date   | The date the survey was conducted                                    | 6/2/2011                  |
| Survey Interviewer      | The survey interviewer is the person who initiated the survey.       | TROY ANGLESTEIN (HX45574) |
| Customer Participation  | Did the customer participate in this survey? (Y/N)                   | Yes                       |
| Customer Representative | Enter the Customer representative name                               | HENRY COOMBS              |
| HSE                     | Was our HSE performance satisfactory? Circle Y or N                  | Yes                       |
| Equipment               | Were you satisfied with our Equipment? Circle Y or N                 | Yes                       |
| Personnel               | Were you satisfied with our people? Circle Y or N                    | Yes                       |
| Customer Comment        | Customer's Comment   |                           |
| Job DVA                 | Did we provide job DVA above our normal service today? Circle Y or N | No                        |
| Time                    | Please enter hours in decimal format to nearest quarter hour.        |                           |
| Other                   | Enter short text for other efficiencies gained.                      |                           |
| Customer Initials       | Customer's Initials  |                           |
| Please provide details  | Please describe how the job efficiencies were gained.                |                           |

CUSTOMER SIGNATURE

|  |  |  |
|--|--|--|
| <b>Sales Order #:</b><br>8207305                 | <b>Line Item:</b><br>10                          | <b>Survey Conducted Date:</b><br>6/2/2011                  |
| <b>Customer:</b><br>OXY GRAND JUNCTION EBUSINESS |  | <b>Job Type (BOM):</b><br>CMT SURFACE CASING BOM           |
| <b>Customer Representative:</b><br>HENRY COOMBS  |  | <b>API / UWI: (leave blank if unknown)</b><br>05-045-18731 |
| <b>Well Name:</b><br>CC                          |  | <b>Well Number:</b><br>697-05-78A                          |
| <b>Well Type:</b><br>Development Well            | <b>Well Country:</b><br>United States of America |  |
| <b>H2S Present:</b>                              | <b>Well State:</b><br>Colorado                   | <b>Well County:</b><br>Garfield                            |

### KEY PERFORMANCE INDICATORS

| General   |          |
|---|----------|
| <b>Survey Conducted Date</b><br>The date the survey was conducted | 6/2/2011 |

| Cementing KPI Survey   |                         |
|--|-------------------------|
| <b>Type of Job</b><br>Select the type of job. (Cementing or Non-Cementing)   | 0                       |
| <b>Select the Maximum Deviation range for this Job</b><br>What is the highest deviation for the job you just completed? This may not be the maximum well deviation.  | Deviated                |
| <b>Total Operating Time (hours)</b><br>Total Operating Hours Including Rig-up, Pumping, Rig-down. Enter in decimal format.   | 6                       |
| <b>HSE Incident, Accident, Injury</b><br>HSE Incident, Accident, Injury. This should be recordable incidents only.   | No                      |
| <b>Was the job purpose achieved?</b><br>Was the job delivered correctly as per customer agreed design?   | Yes                     |
| <b>Operating Hours (Pumping Hours)</b><br>Total number of hours pumping fluid on this job. Enter in decimal format.  | 5                       |
| <b>Customer Non-Productive Rig Time (hrs)</b><br>Lost time due to Halliburton in the start, execution, or completion of an ordered service or product, or delays in a follow-on service. Enter in decimal format. 0 if none. | 0                       |
| <b>Type of Rig Classification Job Was Performed</b><br>Type Of Rig (classification) Job Was Performed On   | Drilling Rig (Portable) |
| <b>Number Of JSAs Performed</b><br>Number Of Jsas Performed  | 7                       |
| <b>Number of Unplanned Shutdowns</b><br>Unplanned shutdown is when injection stops for any period of time.   | 0                       |
| <b>Was this a Primary Cement Job (Yes / No)</b>  | Yes                     |

|  |  |  |
|--|--|--|
| <b>Sales Order #:</b><br>8207305                 | <b>Line Item:</b><br>10                          | <b>Survey Conducted Date:</b><br>6/2/2011                  |
| <b>Customer:</b><br>OXY GRAND JUNCTION EBUSINESS |  | <b>Job Type (BOM):</b><br>CMT SURFACE CASING BOM           |
| <b>Customer Representative:</b><br>HENRY COOMBS  |  | <b>API / UWI: (leave blank if unknown)</b><br>05-045-18731 |
| <b>Well Name:</b><br>CC                          |  | <b>Well Number:</b><br>697-05-78A                          |
| <b>Well Type:</b><br>Development Well            | <b>Well Country:</b><br>United States of America |  |
| <b>H2S Present:</b>                              | <b>Well State:</b><br>Colorado                   | <b>Well County:</b><br>Garfield                            |

|  |     |
|--|-----|
| Primary Cement Job= Casing job, Liner job, or Tie-back job.  |     |
| <b>Did We Run Wiper Plugs?</b><br>Did We Run Top And Bottom Casing Wiper Plugs?  | Top |
| <b>Mixing Density of Job Stayed in Designed Density Range (0-100%)</b><br>Density Range defined as +/- .20 ppg. Calculation: Total BBLs cement mixed at designed density divided by total BBLs of cement multiplied by 100       | 98  |
| <b>Was Automated Density Control Used?</b><br>Was Automated Density Control (ADC) Used ?   | Yes |
| <b>Pump Rate (percent) of Job Stayed At Designed Pump Rate</b><br>Pump Rate range defined as +/- 1bbl/min. Calculation: Total BBLs of fluid pumped at the designed rate divided by Total BBLs of fluid pumped, multiplied by 100 | 97  |
| <b>Nbr of Remedial Sqz Jobs Rqd - Competition</b><br>Number Of Remedial Squeeze Jobs Required After Primary Job Performed By Competition   | 0   |
| <b>Nbr of Remedial Plug Jobs Rqd - HES</b><br>Number Of Remedial Plug Jobs Needed After Primary Plug Pumped By HES   | 0   |
| <b>Nbr of Remedial Sqz Jobs Rqd - HES</b><br>Number Of Remedial Squeeze Jobs Required After Primary Job Performed By HES   | 0   |