

Well Name: **Wildflower 14-27**

Surface Location: Wildflower 19-27 Pad Sec.27-T2N-R68W
North American Datum 1983 US State Plane 1983 Colorado Northern Zone

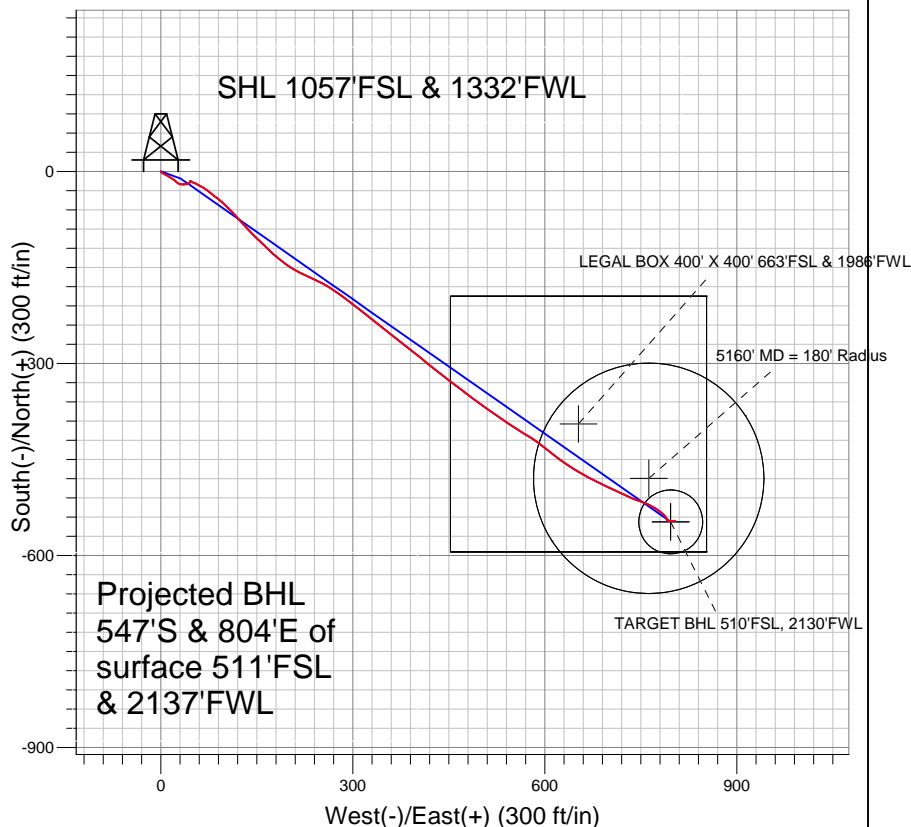
Ground Elevation: 5008.0

+N/-S	+E/-W	Northing	Easting	Latitude	Longitude
0.0	0.0	1281562.56	3141524.35	40.105173	-104.994050

Original Well Elev WELL @ 5023.0ft (Original Well Elev)

Slot

Anadarko, Weld County CO

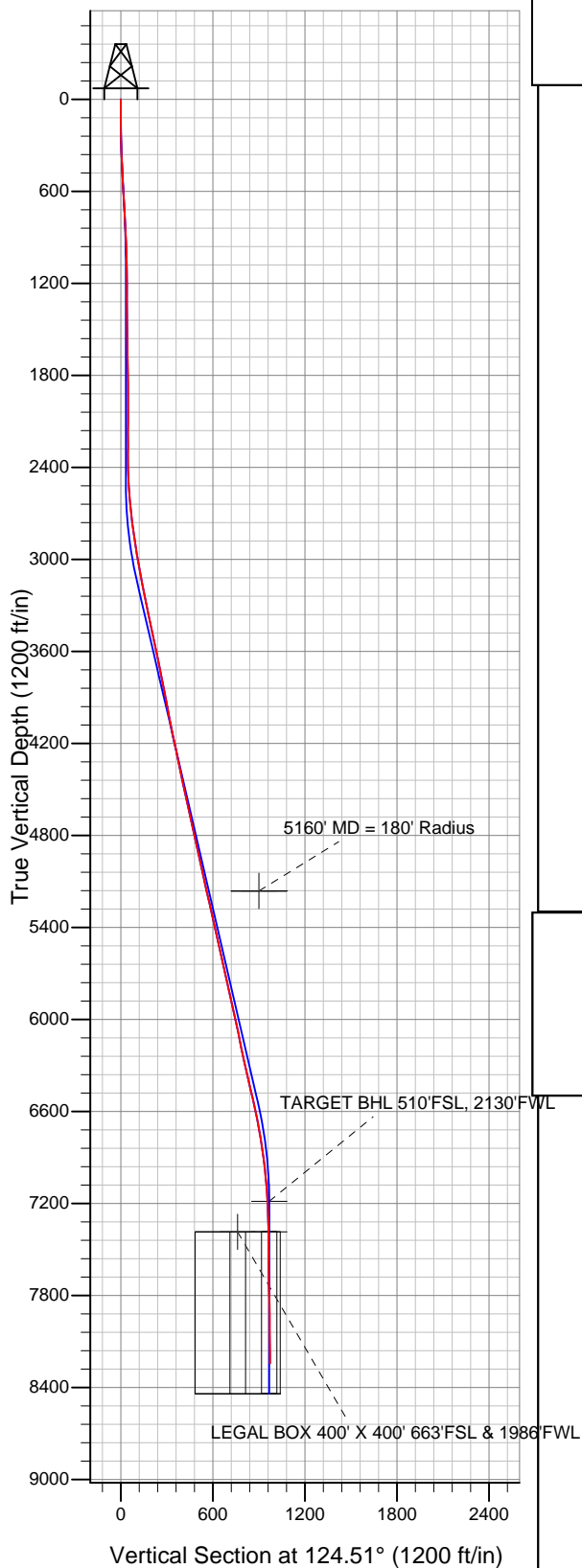


LEGEND

- ◆ Wildflower 14-27, Wellbore #1, Plan #3 (2-7-11) V0
- Wellbore #1
- Survey #1

Final Survey Plot

Projected Final Survey -
8336'MD & 8243'TVD @ 972'VS
0.7 deg Inc 123.3 deg AZ



Project: SEC.27-T2N-R68W
Site: Wildflower 19-27 Pad Sec.27-T2N-R68W
Well: Wildflower 14-27
Plan: Wellbore #1



Directional

Anadarko, Weld County CO

SEC.27-T2N-R68W

Wildflower 19-27 Pad Sec.27-T2N-R68W

Wildflower 14-27

Wellbore #1

Survey: Survey #1

Standard Survey Report

04 April, 2011

Company:	Anadarko, Weld County CO	Local Co-ordinate Reference:	Well Wildflower 14-27
Project:	SEC.27-T2N-R68W	TVD Reference:	WELL @ 5023.0ft (Original Well Elev)
Site:	Wildflower 19-27 Pad Sec.27-T2N-R68W	MD Reference:	WELL @ 5023.0ft (Original Well Elev)
Well:	Wildflower 14-27	North Reference:	True
Wellbore:	Wellbore #1	Survey Calculation Method:	Minimum Curvature
Design:	Wellbore #1	Database:	Landmark

Project	SEC.27-T2N-R68W, Weld County, Colorado		
Map System:	US State Plane 1983	System Datum:	Mean Sea Level
Geo Datum:	North American Datum 1983		Using Well Reference Point
Map Zone:	Colorado Northern Zone		Using geodetic scale factor

Site		Wildflower 19-27 Pad Sec.27-T2N-R68W			
Site Position:		Northing:	1,281,592.81 ft	Latitude:	40.105256
From:	Lat/Long	Easting:	3,141,524.17 ft	Longitude:	-104.994050
Position Uncertainty:	0.0 ft	Slot Radius:	"	Grid Convergence:	0.33 °

Well	Wildflower 14-27					
Well Position	+N/-S	0.0 ft	Northing:	1,281,562.56 ft	Latitude:	40.105173
	+E/-W	0.0 ft	Easting:	3,141,524.35 ft	Longitude:	-104.994050
Position Uncertainty		0.0 ft	Wellhead Elevation:	ft	Ground Level:	5,008.0 ft

Wellbore	Wellbore #1				
Magnetics	Model Name	Sample Date	Declination (°)	Dip Angle (°)	Field Strength (nT)
	IGRF2010	3/30/2011	8.99	66.78	52,972

Design	Wellbore #1				
Audit Notes:					
Version:	1.0	Phase:	ACTUAL	Tie On Depth:	0.0
Vertical Section:	Depth From (TVD) (ft)	+N/-S (ft)	+E/-W (ft)	Direction (°)	
	0.0	0.0	0.0	124.51	

Survey Program	Date	4/4/2011			
From (ft)	To (ft)	Survey (Wellbore)	Tool Name	Description	
142.0	8,336.0	Survey #1 (Wellbore #1)	MWD	MWD - Standard	

Survey										
Measured Depth (ft)	Inclination (°)	Azimuth (°)	Vertical Depth (ft)	+N/-S (ft)	+E/-W (ft)	Vertical Section (ft)	Dogleg Rate (°/100ft)	Build Rate (°/100ft)	Turn Rate (°/100ft)	
0.0	0.00	0.00	0.0	0.0	0.0	0.0	0.00	0.00	0.00	
142.0	0.40	172.10	142.0	-0.5	0.1	0.3	0.28	0.28	0.00	
232.0	0.60	133.80	232.0	-1.1	0.5	1.0	0.42	0.22	-42.56	
323.0	1.50	123.50	323.0	-2.1	1.8	2.7	1.01	0.99	-11.32	
415.0	2.90	118.10	414.9	-3.9	4.8	6.2	1.54	1.52	-5.87	
507.0	3.30	117.70	506.8	-6.2	9.2	11.1	0.44	0.43	-0.43	
599.0	3.30	124.30	598.6	-8.9	13.8	16.4	0.41	0.00	7.17	
691.0	3.10	121.40	690.5	-11.7	18.1	21.5	0.28	-0.22	-3.15	
762.0	2.90	125.60	761.4	-13.8	21.2	25.3	0.42	-0.28	5.92	
831.0	3.10	135.50	830.3	-16.1	23.9	28.8	0.80	0.29	14.35	
926.0	2.90	117.70	925.2	-19.1	27.8	33.7	1.00	-0.21	-18.74	
1,021.0	1.10	84.50	1,020.1	-20.1	30.9	36.8	2.18	-1.89	-34.95	
1,117.0	0.70	93.60	1,116.1	-20.0	32.4	38.0	0.44	-0.42	9.48	

Company:	Anadarko, Weld County CO	Local Co-ordinate Reference:	Well Wildflower 14-27
Project:	SEC.27-T2N-R68W	TVD Reference:	WELL @ 5023.0ft (Original Well Elev)
Site:	Wildflower 19-27 Pad Sec.27-T2N-R68W	MD Reference:	WELL @ 5023.0ft (Original Well Elev)
Well:	Wildflower 14-27	North Reference:	True
Wellbore:	Wellbore #1	Survey Calculation Method:	Minimum Curvature
Design:	Wellbore #1	Database:	Landmark

Survey

Measured Depth (ft)	Inclination (°)	Azimuth (°)	Vertical Depth (ft)	+N/-S (ft)	+E/-W (ft)	Vertical Section (ft)	Dogleg Rate (°/100ft)	Build Rate (°/100ft)	Turn Rate (°/100ft)
1,212.0	0.60	104.90	1,211.1	-20.2	33.4	39.0	0.17	-0.11	11.89
1,307.0	0.60	98.30	1,306.1	-20.4	34.4	39.9	0.07	0.00	-6.95
1,402.0	0.50	86.00	1,401.1	-20.4	35.3	40.7	0.16	-0.11	-12.95
1,497.0	0.40	9.80	1,496.1	-20.1	35.8	40.9	0.59	-0.11	-80.21
1,592.0	1.60	99.00	1,591.1	-20.0	37.2	41.9	1.73	1.26	93.89
1,688.0	1.20	81.40	1,687.0	-20.0	39.5	43.9	0.61	-0.42	-18.33
1,783.0	1.00	66.00	1,782.0	-19.5	41.2	45.0	0.37	-0.21	-16.21
1,878.0	1.10	56.10	1,877.0	-18.7	42.7	45.8	0.22	0.11	-10.42
1,973.0	1.30	63.70	1,972.0	-17.7	44.4	46.7	0.27	0.21	8.00
2,070.0	1.40	358.20	2,069.0	-16.0	45.4	46.5	1.51	0.10	-67.53
2,166.0	0.20	73.90	2,164.9	-14.8	45.5	45.9	1.42	-1.25	78.85
2,261.0	0.10	176.20	2,259.9	-14.9	45.7	46.1	0.25	-0.11	107.68
2,356.0	0.70	122.20	2,354.9	-15.2	46.2	46.7	0.68	0.63	-56.84
2,451.0	2.20	118.40	2,449.9	-16.4	48.3	49.1	1.58	1.58	-4.00
2,547.0	3.60	111.90	2,545.8	-18.4	52.7	53.9	1.50	1.46	-6.77
2,642.0	5.10	117.60	2,640.5	-21.5	59.2	61.0	1.64	1.58	6.00
2,737.0	6.70	122.90	2,735.0	-26.5	67.6	70.7	1.78	1.68	5.58
2,832.0	7.70	129.30	2,829.3	-33.5	77.2	82.6	1.35	1.05	6.74
2,927.0	9.10	127.50	2,923.2	-42.1	88.1	96.4	1.50	1.47	-1.89
3,023.0	9.80	132.30	3,017.9	-52.2	100.1	112.1	1.10	0.73	5.00
3,118.0	11.10	138.40	3,111.4	-64.5	112.2	129.0	1.80	1.37	6.42
3,213.0	11.80	137.60	3,204.5	-78.5	124.8	147.3	0.76	0.74	-0.84
3,308.0	12.70	136.20	3,297.3	-93.2	138.6	167.0	1.00	0.95	-1.47
3,402.0	12.50	134.00	3,389.0	-107.8	153.1	187.2	0.55	-0.21	-2.34
3,498.0	12.20	133.30	3,482.8	-121.9	167.9	207.4	0.35	-0.31	-0.73
3,593.0	11.30	130.00	3,575.8	-134.8	182.3	226.6	1.18	-0.95	-3.47
3,688.0	11.90	125.60	3,668.9	-146.5	197.4	245.7	1.12	0.63	-4.63
3,784.0	11.30	117.90	3,762.9	-156.6	213.8	264.9	1.73	-0.63	-8.02
3,879.0	10.70	113.40	3,856.2	-164.5	230.1	282.8	1.10	-0.63	-4.74
3,974.0	11.00	115.50	3,949.5	-171.9	246.4	300.4	0.52	0.32	2.21
4,069.0	10.80	121.80	4,042.8	-180.5	262.1	318.3	1.27	-0.21	6.63
4,164.0	11.40	125.70	4,136.0	-190.7	277.3	336.5	1.01	0.63	4.11
4,259.0	12.60	128.60	4,228.9	-202.6	293.1	356.3	1.41	1.26	3.05
4,354.0	12.00	126.50	4,321.7	-214.9	309.1	376.5	0.79	-0.63	-2.21
4,450.0	11.20	128.50	4,415.8	-226.7	324.4	395.8	0.93	-0.83	2.08
4,545.0	11.60	129.70	4,508.9	-238.5	339.0	414.5	0.49	0.42	1.26
4,640.0	12.60	127.40	4,601.8	-250.9	354.6	434.3	1.17	1.05	-2.42
4,735.0	13.20	127.90	4,694.4	-263.9	371.3	455.5	0.64	0.63	0.53
4,830.0	12.80	128.60	4,787.0	-277.1	388.1	476.8	0.45	-0.42	0.74
4,925.0	12.00	129.40	4,879.7	-289.9	404.0	497.2	0.86	-0.84	0.84
5,020.0	12.00	129.50	4,972.7	-302.5	419.2	516.8	0.02	0.00	0.11
5,115.0	12.70	127.30	5,065.5	-315.1	435.2	537.1	0.89	0.74	-2.32
5,210.0	13.00	126.90	5,158.1	-327.9	452.0	558.2	0.33	0.32	-0.42
5,288.7	12.92	127.31	5,234.8	-338.5	466.1	575.9	0.16	-0.11	0.53
5160' MD = 180' Radius									
5,305.0	12.90	127.40	5,250.7	-340.7	469.0	579.5	0.16	-0.10	0.53
5,400.0	12.40	127.10	5,343.4	-353.3	485.5	600.3	0.53	-0.53	-0.32
5,496.0	12.40	124.80	5,437.1	-365.4	502.2	620.9	0.51	0.00	-2.40
5,591.0	12.90	126.30	5,529.8	-377.5	519.2	641.7	0.63	0.53	1.58
5,686.0	12.00	123.70	5,622.6	-389.3	535.9	662.1	1.12	-0.95	-2.74
5,781.0	12.20	122.50	5,715.5	-400.1	552.6	682.1	0.34	0.21	-1.26
5,876.0	13.20	121.50	5,808.2	-411.2	570.3	702.9	1.08	1.05	-1.05
5,972.0	13.10	126.60	5,901.6	-423.4	588.4	724.7	1.21	-0.10	5.31
6,067.0	12.40	127.70	5,994.3	-436.1	605.1	745.7	0.78	-0.74	1.16

Company:	Anadarko, Weld County CO	Local Co-ordinate Reference:	Well Wildflower 14-27
Project:	SEC.27-T2N-R68W	TVD Reference:	WELL @ 5023.0ft (Original Well Elev)
Site:	Wildflower 19-27 Pad Sec.27-T2N-R68W	MD Reference:	WELL @ 5023.0ft (Original Well Elev)
Well:	Wildflower 14-27	North Reference:	True
Wellbore:	Wellbore #1	Survey Calculation Method:	Minimum Curvature
Design:	Wellbore #1	Database:	Landmark

Survey									
Measured Depth (ft)	Inclination (°)	Azimuth (°)	Vertical Depth (ft)	+N/-S (ft)	+E/-W (ft)	Vertical Section (ft)	Dogleg Rate (°/100ft)	Build Rate (°/100ft)	Turn Rate (°/100ft)
6,162.0	11.20	126.80	6,087.3	-447.8	620.6	765.1	1.28	-1.26	-0.95
6,257.0	11.60	125.00	6,180.4	-458.8	635.8	783.9	0.56	0.42	-1.89
6,352.0	12.30	121.20	6,273.4	-469.6	652.3	803.5	1.11	0.74	-4.00
6,447.0	13.10	116.10	6,366.0	-479.5	670.6	824.3	1.45	0.84	-5.37
6,542.0	13.10	115.70	6,458.6	-488.9	690.0	845.5	0.10	0.00	-0.42
6,638.0	12.90	114.80	6,552.1	-498.2	709.5	866.9	0.30	-0.21	-0.94
6,733.0	12.10	115.80	6,644.8	-506.9	728.1	887.2	0.87	-0.84	1.05
6,828.0	9.80	109.70	6,738.1	-514.0	744.7	904.8	2.71	-2.42	-6.42
6,923.0	8.60	112.40	6,831.9	-519.4	758.8	919.6	1.34	-1.26	2.84
7,018.0	7.40	122.80	6,926.0	-525.4	770.5	932.6	1.97	-1.26	10.95
7,114.0	5.50	125.20	7,021.4	-531.4	779.5	943.4	2.00	-1.98	2.50
7,209.0	4.40	133.00	7,116.0	-536.6	785.9	951.6	1.35	-1.16	8.21
7,278.8	3.02	146.81	7,185.6	-539.9	788.9	955.9	2.34	-1.97	19.79
TARGET BHL 510'FSL, 2130'FWL									
7,304.0	2.60	155.20	7,210.8	-541.0	789.5	957.0	2.34	-1.68	33.27
7,399.0	1.20	176.80	7,305.8	-543.9	790.4	959.5	1.63	-1.47	22.74
7,474.7	1.06	140.00	7,381.4	-545.3	790.9	960.7	0.96	-0.19	-48.62
LEGAL BOX 400' X 400' 663'FSL & 1986'FWL									
7,478.3	1.06	138.14	7,385.1	-545.3	791.0	960.7	0.96	0.15	-51.12
TARGET CIRCLE 510'FSL & 2130'FWL									
7,494.0	1.10	130.40	7,400.8	-545.5	791.2	961.0	0.96	0.22	-49.38
7,589.0	1.10	95.60	7,495.7	-546.2	792.8	962.7	0.69	0.00	-36.63
7,685.0	1.00	96.00	7,591.7	-546.4	794.5	964.3	0.10	-0.10	0.42
7,843.0	1.20	81.50	7,749.7	-546.3	797.5	966.7	0.22	0.13	-9.18
7,939.0	1.10	82.10	7,845.7	-546.0	799.4	968.1	0.10	-0.10	0.63
8,033.0	0.50	86.20	7,939.7	-545.9	800.7	969.1	0.64	-0.64	4.36
8,129.0	0.60	85.00	8,035.7	-545.8	801.7	969.8	0.10	0.10	-1.25
8,286.0	0.70	123.30	8,192.7	-546.2	803.3	971.4	0.28	0.06	24.39
8,336.0	0.70	123.30	8,242.6	-546.6	803.8	972.0	0.00	0.00	0.00

Checked By: _____	Approved By: _____	Date: _____
-------------------	--------------------	-------------