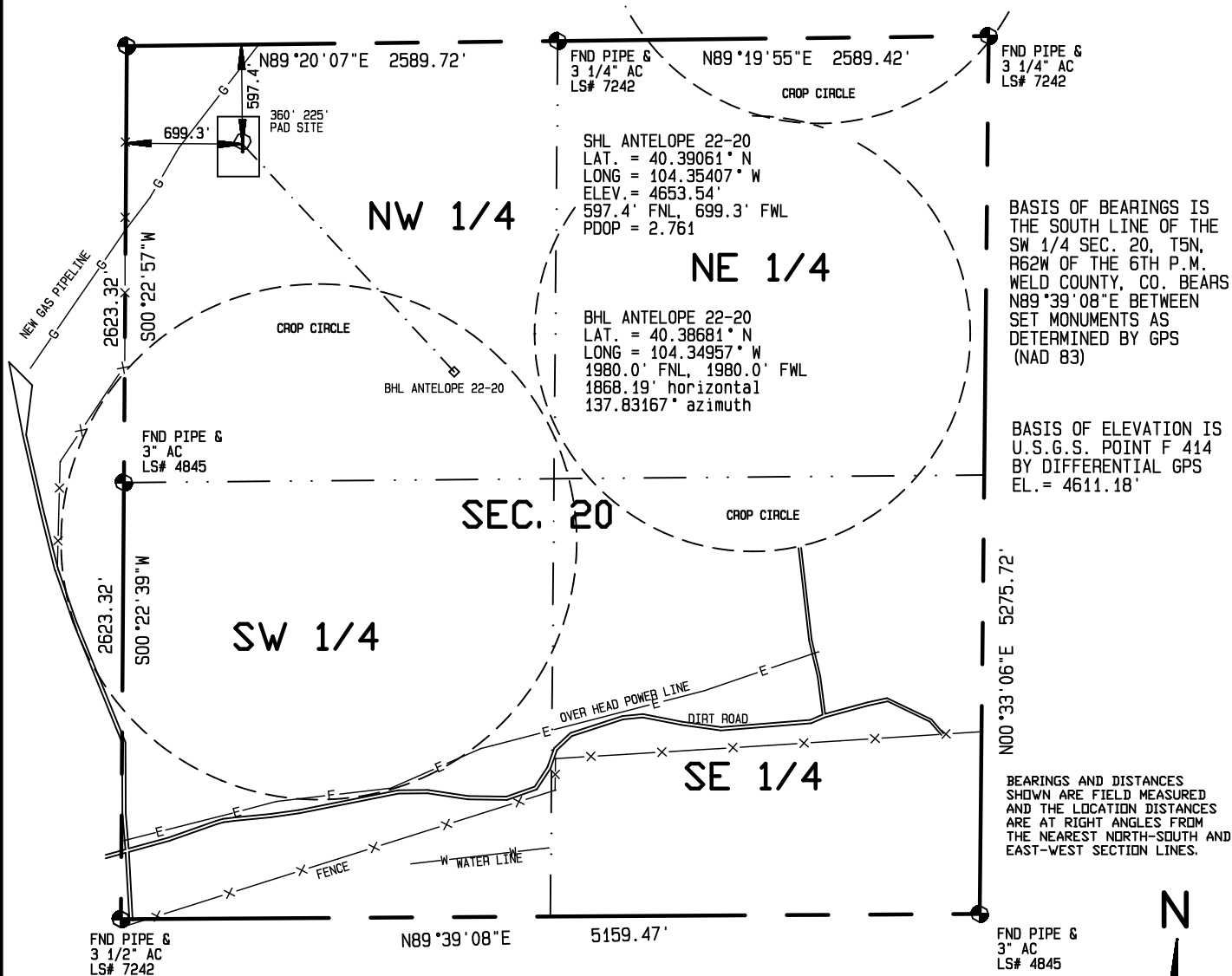


IMPROVEMENTS WITHIN 400' OF THE WELL SITE INCLUDE: A GAS PIPE LINE & ROAD
 PASSES 289 FEET TO THE NORTHWEST.



I HEREBY CERTIFY THAT THIS PLAT
 IS AN ACCURATE REPRESENTATION
 OF A CORRECT SURVEY SHOWING
 THE LOCATION OF SAID WELLSITE:

Dan Griggs PLS# 38018

CONTRACT SURVEYORS, LTD.
 COMPLETE SURVEYING AND GLOBAL POSITIONING

2133 SOUTH BELLAIRE STREET #14
 DENVER COLORADO 80222
 (303) 756-3695



DATE OF FIELD WORK:
 7 JUNE 2011

DATE OF DRAWING:
 8 JUNE 2011

ANTELOPE 22-20 Directional Well

NW 1/4, NW 1/4 SEC. 20, T5N, R62W

BONANAZA CREEK ENERGY OPERATING COMPANY, LLC

MULTIPLE WELL PLAN
 PAGE 3

CSL# 11104-22

WELD COUNTY, COLORADO