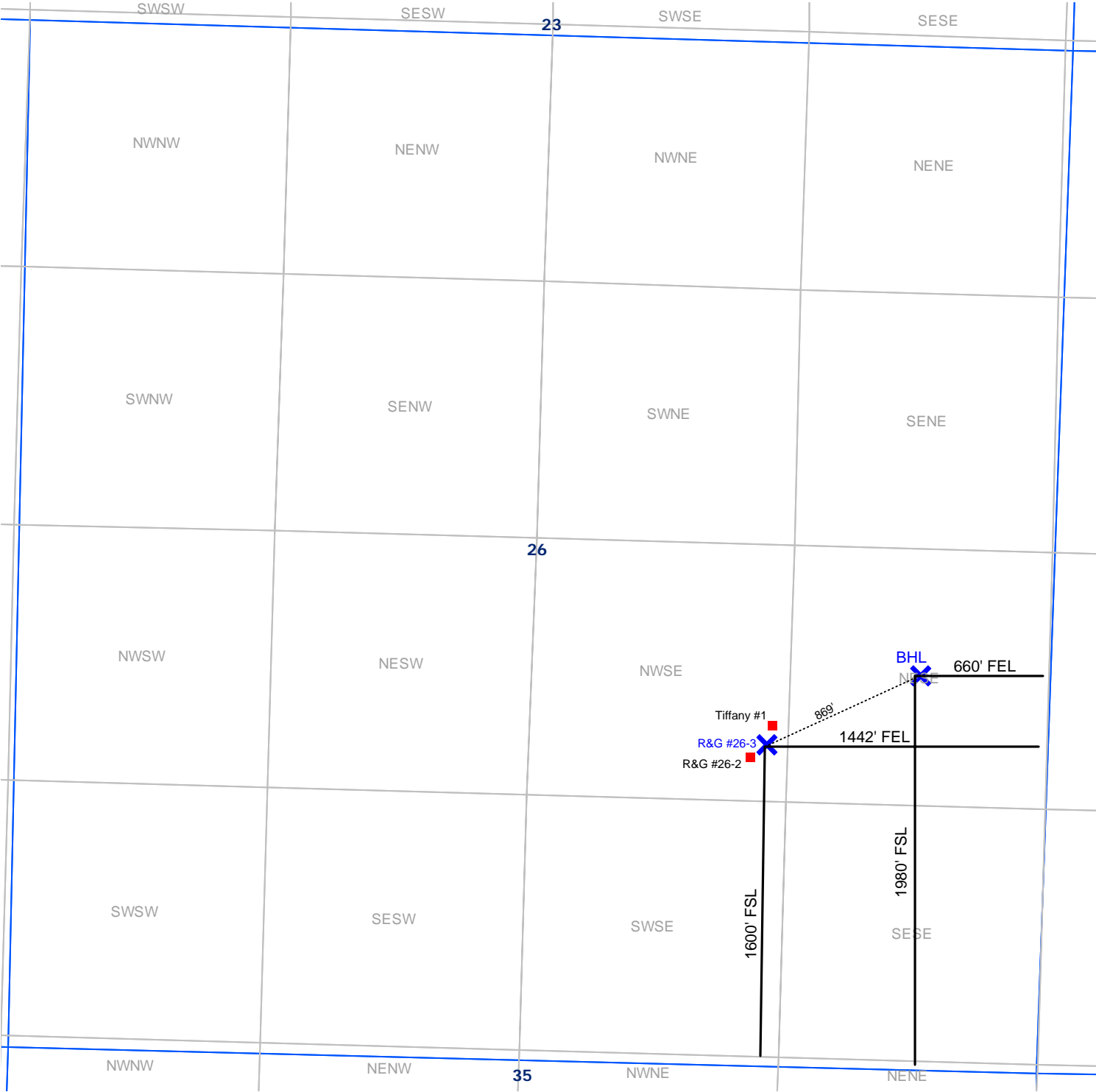


MULTI-WELL PLAN



R&G #26-3
SEC. 26, T33N, R7W, N.M.P.M.
SURFACE LOCATION : 1,600' FSL & 1,442' FEL
BOTTOM HOLE LOCATION: 1,980' FSL & 660' FEL
LA PLATA COUNTY, CO

R&G #26-2: 1585' FSL & 1480' FEL
TIFFANY #1: 1650' FSL & 1350' FEL