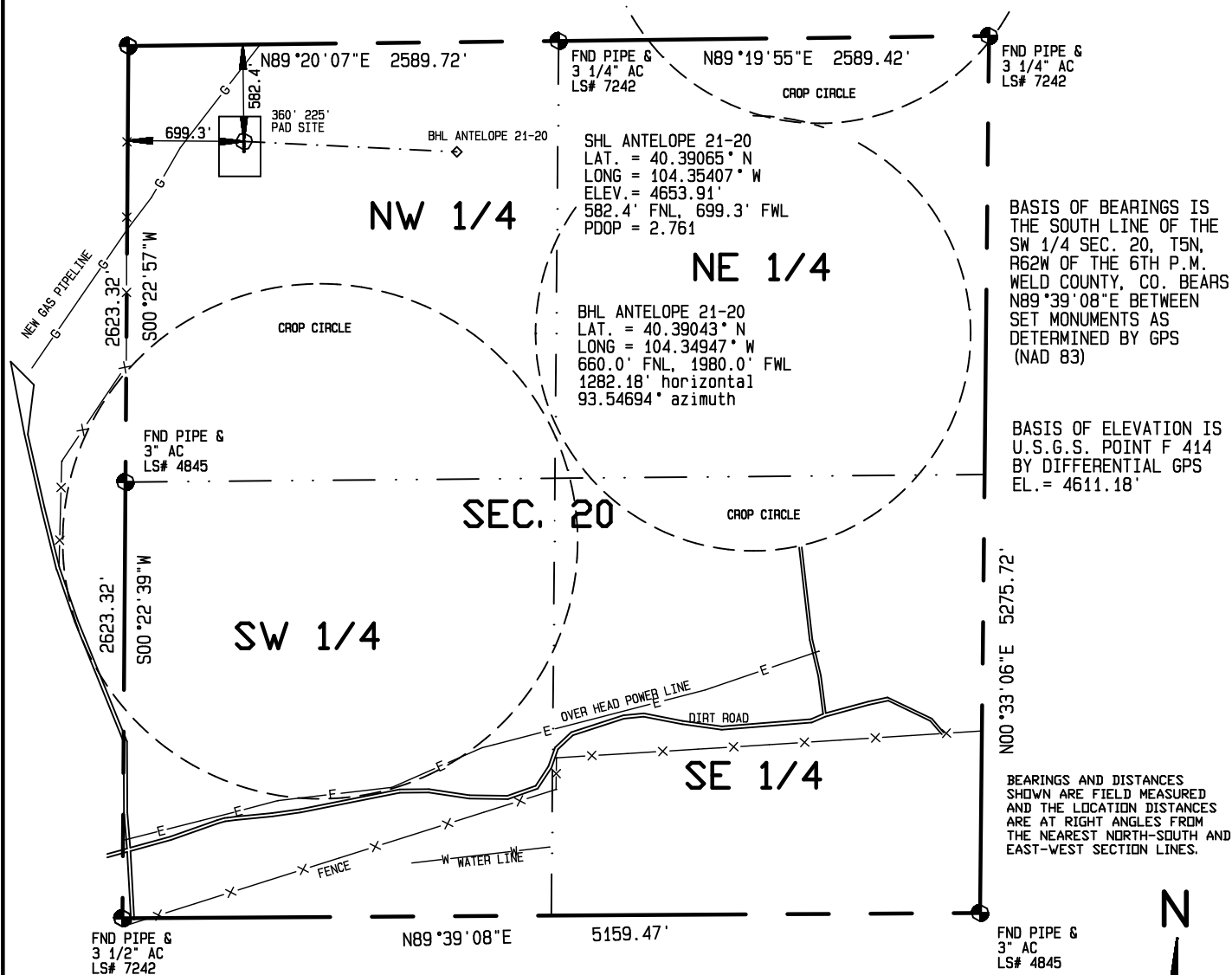


IMPROVEMENTS WITHIN 400' OF THE WELL SITE INCLUDE: A GAS PIPE LINE & ROAD  
 PASSES 280 FEET TO THE NORTHWEST.



I HEREBY CERTIFY THAT THIS PLAT  
 IS AN ACCURATE REPRESENTATION  
 OF A CORRECT SURVEY SHOWING  
 THE LOCATION OF SAID WELLSITE:

Dan Griggs PLS# 38018

**CONTRACT SURVEYORS, LTD.**  
 COMPLETE SURVEYING AND GLOBAL POSITIONING

2133 SOUTH BELLAIRE STREET #14  
 DENVER COLORADO 80222  
 (303) 756-3695



**DATE OF FIELD WORK:**  
 7 JUNE 2011

**DATE OF DRAWING:**  
 8 JUNE 2011

ANTELOPE 21-20 Directional Well

NW 1/4, NW 1/4 SEC. 20, T5N, R62W

BONANAZA CREEK ENERGY OPERATING COMPANY, LLC

MULTIPLE WELL PLAN  
 PAGE 2

CSL# 11104-22

WELD COUNTY, COLORADO