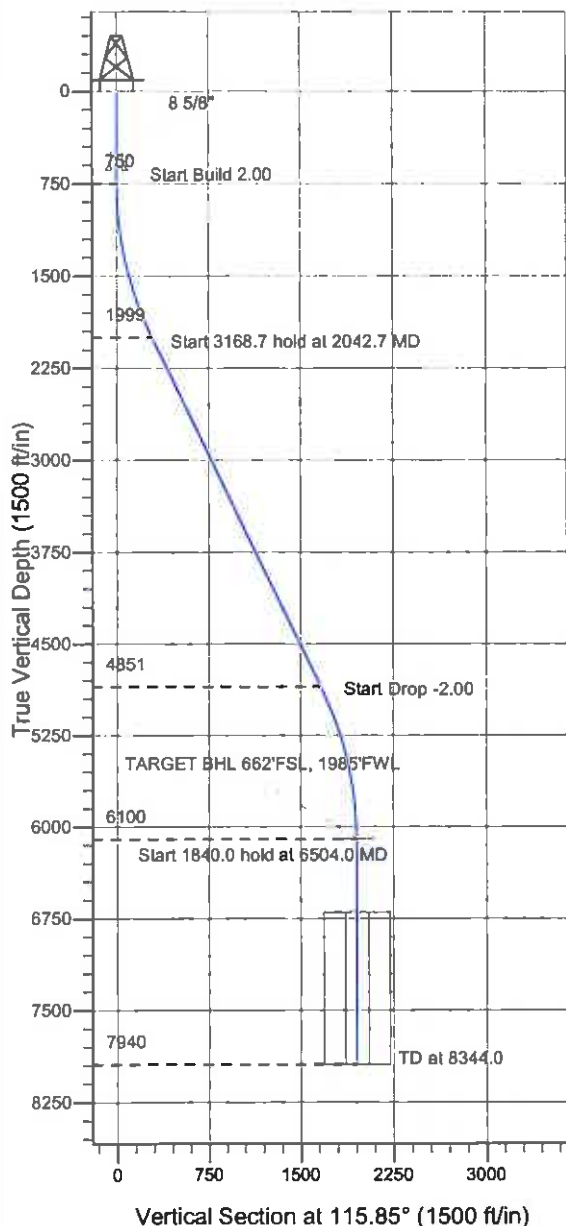


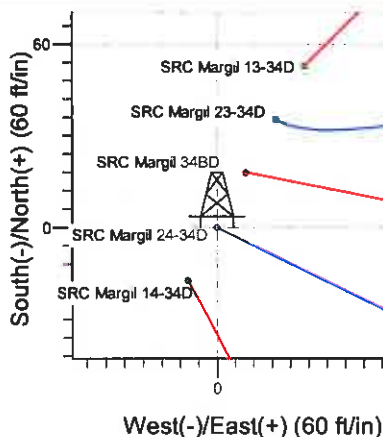
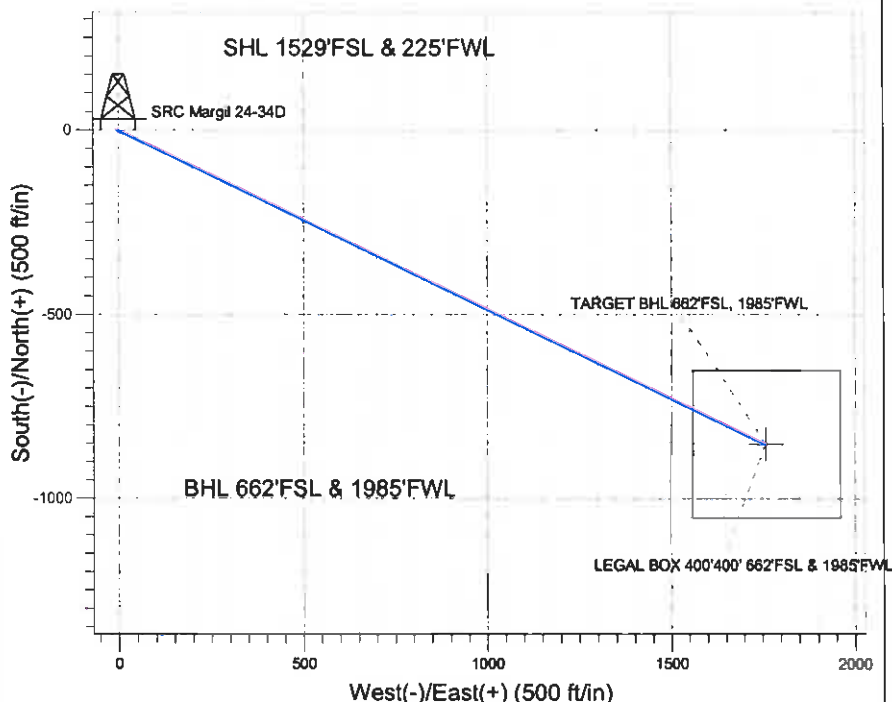
ENSIGN Directional

Well Name: SRC Margil 24-34D

Surface Location: SRC Margil 13-34D Pad Sec.34-T4N-R68W
 North American Datum 1983 US State Plane 1983 Colorado Northern Zone
 Ground Elevation: 5132.0
 +N/-S +E/-W Northing Easting Latitude Longitude Slot
 0.0 0.0 1340410.83 3140121.16 40.266738 -104.997875
 Original Well Elev WELL @ 5145.0ft (Original Well Elev)



Synergy Resources



SRC Margil 13-34D Pad Sec.34-T4N-R68W
 SRC Margil 24-34D
 Plan #1 (6-07-11)
 8 57, June 17 2011



Azimuths to True North
 Magnetic North: 8.98°
 Magnetic Field
 Strength: 53032.9snT
 Dip Angle: 66.90°
 Date: 6/17/2011
 Model: IGRF2010

WELLBORE TARGET DETAILS (LAT/LONG)

Name	TVD	+N/-S	+E/-W	Latitude	Longitude	Shape
TARGET BHL 662'FSL, 1985'FWL	6100.0	-852.4	1759.6	40.264398	-104.991570	Point
LEGAL BOX 400'400' 662'FSL & 1985'FWL	6700.0	-852.4	1759.6	40.264398	-104.991570	Rectangle (Sides: L400.0 W400.0)

SECTION DETAILS

Sec	MD	Inc	Azi	TVD	+N/-S	+E/-W	DLeg	TFace	VSec	Target
1	0.0	0.00	0.00	0.0	0.0	0.0	0.00	0.00	0.0	
2	750.0	0.00	0.00	750.0	0.0	0.0	0.00	0.00	0.0	
3	2042.7	25.85	115.85	1999.2	-125.0	258.0	2.00	115.85	286.7	
4	5211.3	25.85	115.85	4850.8	-727.4	1501.6	0.00	0.00	1668.5	
5	6504.0	0.00	0.00	6100.0	-852.4	1759.6	2.00	180.00	1955.2	TARGET BHL 662'FSL, 1985'FWL
6	8344.0	0.00	0.00	7940.0	-852.4	1759.6	0.00	0.00	1955.2	



Directional

Synergy Resources

SEC.34-T4N-R68W

SRC Margil 13-34D Pad Sec.34-T4N-R68W

SRC Margil 24-34D

Wellbore #1

Plan: Plan #1 (6-07-11)

Standard Planning Report

17 June, 2011

Database: Landmark
Company: Synergy Resources
Project: SEC.34-T4N-R68W
Site: SRC Margil 13-34D Pad Sec.34-T4N-R68W
Well: SRC Margil 24-34D
Wellbore: Wellbore #1
Design: Plan #1 (6-07-11)

Local Co-ordinate Reference: Well SRC Margil 24-34D
TVD Reference: WELL @ 5145.0ft (Original Well Elev)
MD Reference: WELL @ 5145.0ft (Original Well Elev)
North Reference: True
Survey Calculation Method: Minimum Curvature

Project	SEC.34-T4N-R68W, Weld County, Colorado		
Map System:	US State Plane 1983	System Datum:	Mean Sea Level
Geo Datum:	North American Datum 1983		Using Well Reference Point
Map Zone:	Colorado Northern Zone		Using geodetic scale factor

Site SRC Margil 13-34D Pad Sec.34-T4N-R68W

Site Position:		Northing:	1,340,463.83 ft	Latitude:	40.266883
From:	Lat/Long	Easting:	3,140,149.60 ft	Longitude:	-104.997772
Position Uncertainty:	0.0 ft	Slot Radius:	"	Grid Convergence:	0.32 °

Well SRC Margil 24-34D

Well Position	+N/-S	-52.8 ft	Northing:	1,340,410.83 ft	Latitude:	40.266738
	+E/-W	-28.7 ft	Easting:	3,140,121.16 ft	Longitude:	-104.997875
Position Uncertainty		0.0 ft	Wellhead Elevation:	ft	Ground Level:	5,132.0 ft

Wellbore Wellbore #1

Magnetics	Model Name	Sample Date	Declination (°)	Dip Angle (°)	Field Strength (nT)
	IGRF2010	6/17/2011	8.98	66.90	53,033

Design Plan #1 (6-07-11)

Audit Notes:

Version:	Phase:	PROTOTYPE	Tie On Depth:	0.0
-----------------	---------------	-----------	----------------------	-----

Vertical Section:	Depth From (TVD) (ft)	+N/-S (ft)	+E/-W (ft)	Direction (°)
	0.0	0.0	0.0	115.85

Plan Sections

Measured Depth (ft)	Inclination (°)	Azimuth (°)	Vertical Depth (ft)	+N/-S (ft)	+E/-W (ft)	Dogleg Rate (°/100ft)	Build Rate (°/100ft)	Turn Rate (°/100ft)	TFO (°)	Target
0.0	0.00	0.00	0.0	0.0	0.0	0.00	0.00	0.00	0.00	
750.0	0.00	0.00	750.0	0.0	0.0	0.00	0.00	0.00	0.00	
2,042.7	25.85	115.85	1,999.2	-125.0	258.0	2.00	2.00	0.00	115.85	
5,211.3	25.85	115.85	4,850.8	-727.4	1,501.6	0.00	0.00	0.00	0.00	
6,504.0	0.00	0.00	6,100.0	-852.4	1,759.6	2.00	-2.00	0.00	180.00	TARGET BHL 662'
8,344.0	0.00	0.00	7,940.0	-852.4	1,759.6	0.00	0.00	0.00	0.00	

ENSIGN Directional

Planning Report

Database: Landmark
Company: Synergy Resources
Project: SEC.34-T4N-R68W
Site: SRC Margil 13-34D Pad Sec.34-T4N-R68W
Well: SRC Margil 24-34D
Wellbore: Wellbore #1
Design: Plan #1 (6-07-11)

Local Co-ordinate Reference: Well SRC Margil 24-34D
TVD Reference: WELL @ 5145.0ft (Original Well Elev)
MD Reference: WELL @ 5145.0ft (Original Well Elev)
North Reference: True
Survey Calculation Method: Minimum Curvature

Planned Survey

Measured Depth (ft)	Inclination (°)	Azimuth (°)	Vertical Depth (ft)	+N/-S (ft)	+E/-W (ft)	Vertical Section (ft)	Dogleg Rate (°/100ft)	Bulld Rate (°/100ft)	Turn Rate (°/100ft)
0.0	0.00	0.00	0.0	0.0	0.0	0.0	0.00	0.00	0.00
40.0	0.00	0.00	40.0	0.0	0.0	0.0	0.00	0.00	0.00
80.0	0.00	0.00	80.0	0.0	0.0	0.0	0.00	0.00	0.00
120.0	0.00	0.00	120.0	0.0	0.0	0.0	0.00	0.00	0.00
160.0	0.00	0.00	160.0	0.0	0.0	0.0	0.00	0.00	0.00
200.0	0.00	0.00	200.0	0.0	0.0	0.0	0.00	0.00	0.00
240.0	0.00	0.00	240.0	0.0	0.0	0.0	0.00	0.00	0.00
280.0	0.00	0.00	280.0	0.0	0.0	0.0	0.00	0.00	0.00
320.0	0.00	0.00	320.0	0.0	0.0	0.0	0.00	0.00	0.00
360.0	0.00	0.00	360.0	0.0	0.0	0.0	0.00	0.00	0.00
400.0	0.00	0.00	400.0	0.0	0.0	0.0	0.00	0.00	0.00
440.0	0.00	0.00	440.0	0.0	0.0	0.0	0.00	0.00	0.00
480.0	0.00	0.00	480.0	0.0	0.0	0.0	0.00	0.00	0.00
520.0	0.00	0.00	520.0	0.0	0.0	0.0	0.00	0.00	0.00
560.0	0.00	0.00	560.0	0.0	0.0	0.0	0.00	0.00	0.00
600.0	0.00	0.00	600.0	0.0	0.0	0.0	0.00	0.00	0.00
640.0	0.00	0.00	640.0	0.0	0.0	0.0	0.00	0.00	0.00
8 5/8"									
680.0	0.00	0.00	680.0	0.0	0.0	0.0	0.00	0.00	0.00
720.0	0.00	0.00	720.0	0.0	0.0	0.0	0.00	0.00	0.00
750.0	0.00	0.00	750.0	0.0	0.0	0.0	0.00	0.00	0.00
760.0	0.20	115.85	760.0	0.0	0.0	0.0	2.00	2.00	0.00
800.0	1.00	115.85	800.0	-0.2	0.4	0.4	2.00	2.00	0.00
840.0	1.80	115.85	840.0	-0.6	1.3	1.4	2.00	2.00	0.00
880.0	2.60	115.85	880.0	-1.3	2.7	2.9	2.00	2.00	0.00
920.0	3.40	115.85	919.9	-2.2	4.5	5.0	2.00	2.00	0.00
960.0	4.20	115.85	959.8	-3.4	6.9	7.7	2.00	2.00	0.00
1,000.0	5.00	115.85	999.7	-4.8	9.8	10.9	2.00	2.00	0.00
1,040.0	5.80	115.85	1,039.5	-6.4	13.2	14.7	2.00	2.00	0.00
1,080.0	6.60	115.85	1,079.3	-8.3	17.1	19.0	2.00	2.00	0.00
1,120.0	7.40	115.85	1,119.0	-10.4	21.5	23.9	2.00	2.00	0.00
1,160.0	8.20	115.85	1,158.6	-12.8	26.4	29.3	2.00	2.00	0.00
1,200.0	9.00	115.85	1,198.2	-15.4	31.7	35.3	2.00	2.00	0.00
1,240.0	9.80	115.85	1,237.6	-18.2	37.6	41.8	2.00	2.00	0.00
1,280.0	10.60	115.85	1,277.0	-21.3	44.0	48.9	2.00	2.00	0.00
1,320.0	11.40	115.85	1,316.2	-24.6	50.9	56.5	2.00	2.00	0.00
1,360.0	12.20	115.85	1,355.4	-28.2	58.2	64.7	2.00	2.00	0.00
1,400.0	13.00	115.85	1,394.4	-32.0	66.1	73.4	2.00	2.00	0.00
1,440.0	13.80	115.85	1,433.3	-36.1	74.4	82.7	2.00	2.00	0.00
1,480.0	14.60	115.85	1,472.1	-40.3	83.3	92.5	2.00	2.00	0.00
1,520.0	15.40	115.85	1,510.8	-44.8	92.6	102.9	2.00	2.00	0.00
1,560.0	16.20	115.85	1,549.3	-49.6	102.4	113.7	2.00	2.00	0.00
1,600.0	17.00	115.85	1,587.6	-54.6	112.7	125.2	2.00	2.00	0.00
1,640.0	17.80	115.85	1,625.8	-59.8	123.4	137.1	2.00	2.00	0.00
1,680.0	18.60	115.85	1,663.8	-65.2	134.7	149.6	2.00	2.00	0.00
1,720.0	19.40	115.85	1,701.6	-70.9	146.4	162.7	2.00	2.00	0.00
1,760.0	20.20	115.85	1,739.2	-76.8	158.6	176.2	2.00	2.00	0.00
1,800.0	21.00	115.85	1,776.6	-83.0	171.2	190.3	2.00	2.00	0.00
1,840.0	21.80	115.85	1,813.9	-89.3	184.4	204.9	2.00	2.00	0.00
1,880.0	22.60	115.85	1,850.9	-95.9	198.0	220.0	2.00	2.00	0.00
1,920.0	23.40	115.85	1,887.7	-102.7	212.0	235.6	2.00	2.00	0.00
1,960.0	24.20	115.85	1,924.3	-109.8	226.6	251.8	2.00	2.00	0.00
2,000.0	25.00	115.85	1,960.7	-117.0	241.6	268.4	2.00	2.00	0.00
2,040.0	25.80	115.85	1,996.8	-124.5	257.0	285.6	2.00	2.00	0.00

Database: Landmark
Company: Synergy Resources
Project: SEC.34-T4N-R68W
Site: SRC Margil 13-34D Pad Sec.34-T4N-R68W
Well: SRC Margil 24-34D
Wellbore: Wellbore #1
Design: Plan #1 (6-07-11)

Local Co-ordinate Reference: Well SRC Margil 24-34D
TVD Reference: WELL @ 5145.0ft (Original Well Elev)
MD Reference: WELL @ 5145.0ft (Original Well Elev)
North Reference: True
Survey Calculation Method: Minimum Curvature

Planned Survey

Measured Depth (ft)	Inclination (°)	Azimuth (°)	Vertical Depth (ft)	+N/-S (ft)	+E/-W (ft)	Vertical Section (ft)	Dogleg Rate (°/100ft)	Bulld Rate (°/100ft)	Turn Rate (°/100ft)
2,042.7	25.85	115.85	1,999.2	-125.0	258.0	286.7	2.00	2.00	0.00
2,080.0	25.85	115.85	2,032.8	-132.1	272.7	303.0	0.00	0.00	0.00
2,120.0	25.85	115.85	2,068.8	-139.7	288.4	320.4	0.00	0.00	0.00
2,160.0	25.85	115.85	2,104.8	-147.3	304.1	337.9	0.00	0.00	0.00
2,200.0	25.85	115.85	2,140.8	-154.9	319.8	355.3	0.00	0.00	0.00
2,240.0	25.85	115.85	2,176.8	-162.5	335.5	372.8	0.00	0.00	0.00
2,280.0	25.85	115.85	2,212.8	-170.1	351.2	390.2	0.00	0.00	0.00
2,320.0	25.85	115.85	2,248.8	-177.7	366.9	407.7	0.00	0.00	0.00
2,360.0	25.85	115.85	2,284.8	-185.3	382.6	425.1	0.00	0.00	0.00
2,400.0	25.85	115.85	2,320.8	-192.9	398.3	442.5	0.00	0.00	0.00
2,440.0	25.85	115.85	2,356.8	-200.5	414.0	460.0	0.00	0.00	0.00
2,480.0	25.85	115.85	2,392.8	-208.1	429.7	477.4	0.00	0.00	0.00
2,520.0	25.85	115.85	2,428.8	-215.7	445.4	494.9	0.00	0.00	0.00
2,560.0	25.85	115.85	2,464.8	-223.4	461.1	512.3	0.00	0.00	0.00
2,600.0	25.85	115.85	2,500.8	-231.0	476.8	529.8	0.00	0.00	0.00
2,640.0	25.85	115.85	2,536.8	-238.6	492.5	547.2	0.00	0.00	0.00
2,680.0	25.85	115.85	2,572.8	-246.2	508.2	564.6	0.00	0.00	0.00
2,720.0	25.85	115.85	2,608.8	-253.8	523.9	582.1	0.00	0.00	0.00
2,760.0	25.85	115.85	2,644.8	-261.4	539.6	599.5	0.00	0.00	0.00
2,800.0	25.85	115.85	2,680.8	-269.0	555.3	617.0	0.00	0.00	0.00
2,840.0	25.85	115.85	2,716.8	-276.6	571.0	634.4	0.00	0.00	0.00
2,880.0	25.85	115.85	2,752.8	-284.2	586.6	651.9	0.00	0.00	0.00
2,920.0	25.85	115.85	2,788.8	-291.8	602.3	669.3	0.00	0.00	0.00
2,960.0	25.85	115.85	2,824.8	-299.4	618.0	686.7	0.00	0.00	0.00
3,000.0	25.85	115.85	2,860.8	-307.0	633.7	704.2	0.00	0.00	0.00
3,040.0	25.85	115.85	2,896.8	-314.6	649.4	721.6	0.00	0.00	0.00
3,080.0	25.85	115.85	2,932.8	-322.2	665.1	739.1	0.00	0.00	0.00
3,120.0	25.85	115.85	2,968.8	-329.8	680.8	756.5	0.00	0.00	0.00
3,160.0	25.85	115.85	3,004.8	-337.4	696.5	774.0	0.00	0.00	0.00
3,200.0	25.85	115.85	3,040.7	-345.0	712.2	791.4	0.00	0.00	0.00
3,240.0	25.85	115.85	3,076.7	-352.6	727.9	808.8	0.00	0.00	0.00
3,280.0	25.85	115.85	3,112.7	-360.2	743.6	826.3	0.00	0.00	0.00
3,320.0	25.85	115.85	3,148.7	-367.8	759.3	843.7	0.00	0.00	0.00
3,360.0	25.85	115.85	3,184.7	-375.4	775.0	861.2	0.00	0.00	0.00
3,400.0	25.85	115.85	3,220.7	-383.0	790.7	878.6	0.00	0.00	0.00
3,440.0	25.85	115.85	3,256.7	-390.6	806.4	896.1	0.00	0.00	0.00
3,480.0	25.85	115.85	3,292.7	-398.3	822.1	913.5	0.00	0.00	0.00
3,520.0	25.85	115.85	3,328.7	-405.9	837.8	930.9	0.00	0.00	0.00
3,560.0	25.85	115.85	3,364.7	-413.5	853.5	948.4	0.00	0.00	0.00
3,600.0	25.85	115.85	3,400.7	-421.1	869.2	965.8	0.00	0.00	0.00
3,640.0	25.85	115.85	3,436.7	-428.7	884.9	983.3	0.00	0.00	0.00
3,680.0	25.85	115.85	3,472.7	-436.3	900.6	1,000.7	0.00	0.00	0.00
3,720.0	25.85	115.85	3,508.7	-443.9	916.3	1,018.2	0.00	0.00	0.00
3,760.0	25.85	115.85	3,544.7	-451.5	932.0	1,035.6	0.00	0.00	0.00
3,800.0	25.85	115.85	3,580.7	-459.1	947.7	1,053.0	0.00	0.00	0.00
3,840.0	25.85	115.85	3,616.7	-466.7	963.4	1,070.5	0.00	0.00	0.00
3,880.0	25.85	115.85	3,652.7	-474.3	979.1	1,087.9	0.00	0.00	0.00
3,920.0	25.85	115.85	3,688.7	-481.9	994.8	1,105.4	0.00	0.00	0.00
3,960.0	25.85	115.85	3,724.7	-489.5	1,010.5	1,122.8	0.00	0.00	0.00
4,000.0	25.85	115.85	3,760.7	-497.1	1,026.2	1,140.3	0.00	0.00	0.00
4,040.0	25.85	115.85	3,796.7	-504.7	1,041.9	1,157.7	0.00	0.00	0.00
4,080.0	25.85	115.85	3,832.7	-512.3	1,057.6	1,175.1	0.00	0.00	0.00
4,120.0	25.85	115.85	3,868.7	-519.9	1,073.3	1,192.6	0.00	0.00	0.00
4,160.0	25.85	115.85	3,904.7	-527.5	1,089.0	1,210.0	0.00	0.00	0.00

Database: Landmark
Company: Synergy Resources
Project: SEC.34-T4N-R68W
Site: SRC Margil 13-34D Pad Sec.34-T4N-R68W
Well: SRC Margil 24-34D
Wellbore: Wellbore #1
Design: Plan #1 (6-07-11)

Local Co-ordinate Reference:
TVD Reference:
MD Reference:
North Reference:
Survey Calculation Method:

Well SRC Margil 24-34D
 WELL @ 5145.0ft (Original Well Elev)
 WELL @ 5145.0ft (Original Well Elev)
 True
 Minimum Curvature

Planned Survey

Measured Depth (ft)	Inclination (°)	Azimuth (°)	Vertical Depth (ft)	+N/-S (ft)	+E/-W (ft)	Vertical Section (ft)	Dogleg Rate (°/100ft)	Bulld Rate (°/100ft)	Turn Rate (°/100ft)
4,200.0	25.85	115.85	3,940.7	-535.1	1,104.7	1,227.5	0.00	0.00	0.00
4,240.0	25.85	115.85	3,976.7	-542.7	1,120.4	1,244.9	0.00	0.00	0.00
4,280.0	25.85	115.85	4,012.7	-550.3	1,136.1	1,262.4	0.00	0.00	0.00
4,320.0	25.85	115.85	4,048.7	-557.9	1,151.8	1,279.8	0.00	0.00	0.00
4,360.0	25.85	115.85	4,084.6	-565.6	1,167.5	1,297.2	0.00	0.00	0.00
4,400.0	25.85	115.85	4,120.6	-573.2	1,183.2	1,314.7	0.00	0.00	0.00
4,440.0	25.85	115.85	4,156.6	-580.8	1,198.9	1,332.1	0.00	0.00	0.00
4,480.0	25.85	115.85	4,192.6	-588.4	1,214.6	1,349.6	0.00	0.00	0.00
4,520.0	25.85	115.85	4,228.6	-596.0	1,230.3	1,367.0	0.00	0.00	0.00
4,560.0	25.85	115.85	4,264.6	-603.6	1,246.0	1,384.4	0.00	0.00	0.00
4,600.0	25.85	115.85	4,300.6	-611.2	1,261.7	1,401.9	0.00	0.00	0.00
4,640.0	25.85	115.85	4,336.6	-618.8	1,277.3	1,419.3	0.00	0.00	0.00
4,680.0	25.85	115.85	4,372.6	-626.4	1,293.0	1,436.8	0.00	0.00	0.00
4,720.0	25.85	115.85	4,408.6	-634.0	1,308.7	1,454.2	0.00	0.00	0.00
4,760.0	25.85	115.85	4,444.6	-641.6	1,324.4	1,471.7	0.00	0.00	0.00
4,800.0	25.85	115.85	4,480.6	-649.2	1,340.1	1,489.1	0.00	0.00	0.00
4,840.0	25.85	115.85	4,516.6	-656.8	1,355.8	1,506.5	0.00	0.00	0.00
4,880.0	25.85	115.85	4,552.6	-664.4	1,371.5	1,524.0	0.00	0.00	0.00
4,920.0	25.85	115.85	4,588.6	-672.0	1,387.2	1,541.4	0.00	0.00	0.00
4,960.0	25.85	115.85	4,624.6	-679.6	1,402.9	1,558.9	0.00	0.00	0.00
5,000.0	25.85	115.85	4,660.6	-687.2	1,418.6	1,576.3	0.00	0.00	0.00
5,040.0	25.85	115.85	4,696.6	-694.8	1,434.3	1,593.8	0.00	0.00	0.00
5,080.0	25.85	115.85	4,732.6	-702.4	1,450.0	1,611.2	0.00	0.00	0.00
5,120.0	25.85	115.85	4,768.6	-710.0	1,465.7	1,628.6	0.00	0.00	0.00
5,160.0	25.85	115.85	4,804.6	-717.6	1,481.4	1,646.1	0.00	0.00	0.00
5,200.0	25.85	115.85	4,840.6	-725.2	1,497.1	1,663.5	0.00	0.00	0.00
5,211.3	25.85	115.85	4,850.8	-727.4	1,501.6	1,668.5	0.00	0.00	0.00
5,240.0	25.28	115.85	4,876.6	-732.8	1,512.7	1,680.8	2.00	-2.00	0.00
5,280.0	24.48	115.85	4,912.9	-740.1	1,527.8	1,697.7	2.00	-2.00	0.00
5,320.0	23.68	115.85	4,949.4	-747.2	1,542.5	1,714.0	2.00	-2.00	0.00
5,360.0	22.88	115.85	4,986.2	-754.1	1,556.8	1,729.8	2.00	-2.00	0.00
5,400.0	22.08	115.85	5,023.1	-760.8	1,570.5	1,745.1	2.00	-2.00	0.00
5,440.0	21.28	115.85	5,060.3	-767.2	1,583.8	1,759.9	2.00	-2.00	0.00
5,480.0	20.48	115.85	5,097.7	-773.5	1,596.7	1,774.1	2.00	-2.00	0.00
5,520.0	19.68	115.85	5,135.3	-779.4	1,609.0	1,787.9	2.00	-2.00	0.00
5,560.0	18.88	115.85	5,173.0	-785.2	1,620.9	1,801.1	2.00	-2.00	0.00
5,600.0	18.08	115.85	5,211.0	-790.7	1,632.3	1,813.7	2.00	-2.00	0.00
5,640.0	17.28	115.85	5,249.1	-796.0	1,643.2	1,825.9	2.00	-2.00	0.00
5,680.0	16.48	115.85	5,287.3	-801.1	1,653.7	1,837.5	2.00	-2.00	0.00
5,720.0	15.68	115.85	5,325.8	-805.9	1,663.7	1,848.6	2.00	-2.00	0.00
5,760.0	14.88	115.85	5,364.4	-810.5	1,673.1	1,859.1	2.00	-2.00	0.00
5,800.0	14.08	115.85	5,403.1	-814.9	1,682.1	1,869.1	2.00	-2.00	0.00
5,840.0	13.28	115.85	5,442.0	-819.0	1,690.7	1,878.6	2.00	-2.00	0.00
5,880.0	12.48	115.85	5,480.9	-822.9	1,698.7	1,887.5	2.00	-2.00	0.00
5,920.0	11.68	115.85	5,520.1	-826.5	1,706.2	1,895.9	2.00	-2.00	0.00
5,960.0	10.88	115.85	5,559.3	-829.9	1,713.3	1,903.7	2.00	-2.00	0.00
6,000.0	10.08	115.85	5,598.6	-833.1	1,719.8	1,911.0	2.00	-2.00	0.00
6,040.0	9.28	115.85	5,638.0	-836.1	1,725.9	1,917.7	2.00	-2.00	0.00
6,080.0	8.48	115.85	5,677.6	-838.7	1,731.4	1,923.9	2.00	-2.00	0.00
6,120.0	7.68	115.85	5,717.2	-841.2	1,736.5	1,929.5	2.00	-2.00	0.00
6,160.0	6.88	115.85	5,756.8	-843.4	1,741.0	1,934.6	2.00	-2.00	0.00
6,200.0	6.08	115.85	5,796.6	-845.4	1,745.1	1,939.1	2.00	-2.00	0.00
6,240.0	5.28	115.85	5,836.4	-847.1	1,748.7	1,943.0	2.00	-2.00	0.00
6,280.0	4.48	115.85	5,876.3	-848.6	1,751.7	1,946.4	2.00	-2.00	0.00

Database: Landmark
Company: Synergy Resources
Project: SEC.34-T4N-R68W
Site: SRC Margil 13-34D Pad Sec.34-T4N-R68W
Well: SRC Margil 24-34D
Wellbore: Wellbore #1
Design: Plan #1 (6-07-11)

Local Co-ordinate Reference: Well SRC Margil 24-34D
TVD Reference: WELL @ 5145.0ft (Original Well Elev)
MD Reference: WELL @ 5145.0ft (Original Well Elev)
North Reference: True
Survey Calculation Method: Minmum Curvature

Planned Survey

Measured Depth (ft)	Inclination (°)	Azimuth (°)	Vertical Depth (ft)	+N/-S (ft)	+E/-W (ft)	Vertical Section (ft)	Dogleg Rate (°/100ft)	Build Rate (°/100ft)	Turn Rate (°/100ft)
6,320.0	3.68	115.85	5,916.2	-849.8	1,754.3	1,949.3	2.00	-2.00	0.00
6,360.0	2.88	115.85	5,956.1	-850.8	1,756.3	1,951.6	2.00	-2.00	0.00
6,400.0	2.08	115.85	5,996.0	-851.6	1,757.9	1,953.3	2.00	-2.00	0.00
6,440.0	1.28	115.85	6,036.0	-852.1	1,759.0	1,954.5	2.00	-2.00	0.00
6,480.0	0.48	115.85	6,076.0	-852.4	1,759.5	1,955.1	2.00	-2.00	0.00
6,504.0	0.00	0.00	6,100.0	-852.4	1,759.6	1,955.2	2.00	-2.00	-483.18
TARGET BHL 662'FSL, 1985'FWL									
6,520.0	0.00	0.00	6,116.0	-852.4	1,759.6	1,955.2	0.00	0.00	0.00
6,560.0	0.00	0.00	6,156.0	-852.4	1,759.6	1,955.2	0.00	0.00	0.00
6,600.0	0.00	0.00	6,196.0	-852.4	1,759.6	1,955.2	0.00	0.00	0.00
6,640.0	0.00	0.00	6,236.0	-852.4	1,759.6	1,955.2	0.00	0.00	0.00
6,680.0	0.00	0.00	6,276.0	-852.4	1,759.6	1,955.2	0.00	0.00	0.00
6,720.0	0.00	0.00	6,316.0	-852.4	1,759.6	1,955.2	0.00	0.00	0.00
6,760.0	0.00	0.00	6,356.0	-852.4	1,759.6	1,955.2	0.00	0.00	0.00
6,800.0	0.00	0.00	6,396.0	-852.4	1,759.6	1,955.2	0.00	0.00	0.00
6,840.0	0.00	0.00	6,436.0	-852.4	1,759.6	1,955.2	0.00	0.00	0.00
6,880.0	0.00	0.00	6,476.0	-852.4	1,759.6	1,955.2	0.00	0.00	0.00
6,920.0	0.00	0.00	6,516.0	-852.4	1,759.6	1,955.2	0.00	0.00	0.00
6,960.0	0.00	0.00	6,556.0	-852.4	1,759.6	1,955.2	0.00	0.00	0.00
7,000.0	0.00	0.00	6,596.0	-852.4	1,759.6	1,955.2	0.00	0.00	0.00
7,040.0	0.00	0.00	6,636.0	-852.4	1,759.6	1,955.2	0.00	0.00	0.00
7,080.0	0.00	0.00	6,676.0	-852.4	1,759.6	1,955.2	0.00	0.00	0.00
7,104.0	0.00	0.00	6,700.0	-852.4	1,759.6	1,955.2	0.00	0.00	0.00
LEGAL BOX 400'400' 662'FSL & 1985'FWL									
7,120.0	0.00	0.00	6,716.0	-852.4	1,759.6	1,955.2	0.00	0.00	0.00
7,160.0	0.00	0.00	6,756.0	-852.4	1,759.6	1,955.2	0.00	0.00	0.00
7,200.0	0.00	0.00	6,796.0	-852.4	1,759.6	1,955.2	0.00	0.00	0.00
7,240.0	0.00	0.00	6,836.0	-852.4	1,759.6	1,955.2	0.00	0.00	0.00
7,280.0	0.00	0.00	6,876.0	-852.4	1,759.6	1,955.2	0.00	0.00	0.00
7,320.0	0.00	0.00	6,916.0	-852.4	1,759.6	1,955.2	0.00	0.00	0.00
7,360.0	0.00	0.00	6,956.0	-852.4	1,759.6	1,955.2	0.00	0.00	0.00
7,400.0	0.00	0.00	6,996.0	-852.4	1,759.6	1,955.2	0.00	0.00	0.00
7,440.0	0.00	0.00	7,036.0	-852.4	1,759.6	1,955.2	0.00	0.00	0.00
7,480.0	0.00	0.00	7,076.0	-852.4	1,759.6	1,955.2	0.00	0.00	0.00
7,520.0	0.00	0.00	7,116.0	-852.4	1,759.6	1,955.2	0.00	0.00	0.00
7,560.0	0.00	0.00	7,156.0	-852.4	1,759.6	1,955.2	0.00	0.00	0.00
7,600.0	0.00	0.00	7,196.0	-852.4	1,759.6	1,955.2	0.00	0.00	0.00
7,640.0	0.00	0.00	7,236.0	-852.4	1,759.6	1,955.2	0.00	0.00	0.00
7,680.0	0.00	0.00	7,276.0	-852.4	1,759.6	1,955.2	0.00	0.00	0.00
7,720.0	0.00	0.00	7,316.0	-852.4	1,759.6	1,955.2	0.00	0.00	0.00
7,760.0	0.00	0.00	7,356.0	-852.4	1,759.6	1,955.2	0.00	0.00	0.00
7,800.0	0.00	0.00	7,396.0	-852.4	1,759.6	1,955.2	0.00	0.00	0.00
7,840.0	0.00	0.00	7,436.0	-852.4	1,759.6	1,955.2	0.00	0.00	0.00
7,880.0	0.00	0.00	7,476.0	-852.4	1,759.6	1,955.2	0.00	0.00	0.00
7,920.0	0.00	0.00	7,516.0	-852.4	1,759.6	1,955.2	0.00	0.00	0.00
7,960.0	0.00	0.00	7,556.0	-852.4	1,759.6	1,955.2	0.00	0.00	0.00
8,000.0	0.00	0.00	7,596.0	-852.4	1,759.6	1,955.2	0.00	0.00	0.00
8,040.0	0.00	0.00	7,636.0	-852.4	1,759.6	1,955.2	0.00	0.00	0.00
8,080.0	0.00	0.00	7,676.0	-852.4	1,759.6	1,955.2	0.00	0.00	0.00
8,120.0	0.00	0.00	7,716.0	-852.4	1,759.6	1,955.2	0.00	0.00	0.00
8,160.0	0.00	0.00	7,756.0	-852.4	1,759.6	1,955.2	0.00	0.00	0.00
8,200.0	0.00	0.00	7,796.0	-852.4	1,759.6	1,955.2	0.00	0.00	0.00
8,240.0	0.00	0.00	7,836.0	-852.4	1,759.6	1,955.2	0.00	0.00	0.00
8,280.0	0.00	0.00	7,876.0	-852.4	1,759.6	1,955.2	0.00	0.00	0.00

Database: Landmark
Company: Synergy Resources
Project: SEC.34-T4N-R68W
Site: SRC Margil 13-34D Pad Sec.34-T4N-R68W
Well: SRC Margil 24-34D
Wellbore: Wellbore #1
Design: Plan #1 (6-07-11)

Local Co-ordinate Reference: Well SRC Margil 24-34D
TVD Reference: WELL @ 5145.0ft (Original Well Elev)
MD Reference: WELL @ 5145.0ft (Original Well Elev)
North Reference: True
Survey Calculation Method: Minimum Curvature

Planned Survey

Measured Depth (ft)	Inclination (°)	Azimuth (°)	Vertical Depth (ft)	+N/-S (ft)	+E/-W (ft)	Vertical Section (ft)	Dogleg Rate (°/100ft)	Build Rate (°/100ft)	Turn Rate (°/100ft)
8,320.0	0.00	0.00	7,916.0	-852.4	1,759.6	1,955.2	0.00	0.00	0.00
8,344.0	0.00	0.00	7,940.0	-852.4	1,759.6	1,955.2	0.00	0.00	0.00

Targets

Target Name

- hit/miss target	Dip Angle (°)	Dip Dir. (°)	TVD (ft)	+N/-S (ft)	+E/-W (ft)	Northing (ft)	Easting (ft)	Latitude	Longitude
- Shape									
LEGAL BOX 400'400'	0.00	0.00	6,700.0	-852.4	1,759.6	1,339,568.45	3,141,885.48	40.264398	-104.991570
- plan hits target center									
- Rectangle (sides W400.0 H400.0 D1,240.0)									
TARGET BHL 662'FS	0.00	0.00	6,100.0	-852.4	1,759.6	1,339,568.45	3,141,885.48	40.264398	-104.991570
- plan hits target center									
- Point									

Casing Points

Measured Depth (ft)	Vertical Depth (ft)	Name	Casing Diameter (")	Hole Diameter (")
640.0	640.0	8 5/8"	8-5/8	12-1/4



Directional

Synergy Resources

SEC.34-T4N-R68W

SRC Margil 13-34D Pad Sec.34-T4N-R68W

SRC Margil 24-34D

Wellbore #1

Plan #1 (6-07-11)

Anticollision Report

17 June, 2011

Company:	Synergy Resources	Local Co-ordinate Reference:	Well SRC Margil 24-34D
Project:	SEC.34-T4N-R68W	TVD Reference:	WELL @ 5145.0ft (Original Well Elev)
Reference Site:	SRC Margil 13-34D Pad Sec.34-T4N-R68W	MD Reference:	WELL @ 5145.0ft (Original Well Elev)
Site Error:	0.0ft	North Reference:	True
Reference Well:	SRC Margil 24-34D	Survey Calculation Method:	Minimum Curvature
Well Error:	0.0ft	Output errors are at	2.00 sigma
Reference Wellbore	Wellbore #1	Database:	Landmark
Reference Design:	Plan #1 (6-07-11)	Offset TVD Reference:	Offset Datum

Reference	Plan #1 (6-07-11)		
Filter type:	NO GLOBAL FILTER: Using user defined selection & filtering criteria		
Interpolation Method:	Stations	Error Model:	ISCWSA
Depth Range:	Unlimited	Scan Method:	Closest Approach 3D
Results Limited by:	Maximum center-center distance of 10,000.0ft	Error Surface:	Elliptical Conic
Warning Levels Evaluated at:	2.00 Sigma		

Survey Tool Program		Date 6/17/2011		
From (ft)	To (ft)	Survey (Wellbore)	Tool Name	Description
0.0	8,344.0	Plan #1 (6-07-11) (Wellbore #1)	MWD	MWD - Standard

Summary						
Site Name	Reference Measured Depth (ft)	Offset Measured Depth (ft)	Distance Between Centres (ft)	Between Ellipses (ft)	Separation Factor	Warning
Offset Well - Wellbore - Design						
SRC Margil 13-34D Pad Sec.34-T4N-R68W						
SRC Margil 14-34D - Wellbore #1 - Plan #1 (6-07-11)	750.0	750.0	19.9	16.7	6.322 CC	
SRC Margil 14-34D - Wellbore #1 - Plan #1 (6-07-11)	800.0	800.0	19.9	16.6	5.926 ES	
SRC Margil 14-34D - Wellbore #1 - Plan #1 (6-07-11)	900.0	899.9	20.5	16.7	5.415 SF	
SRC Margil 34BD - Wellbore #1 - Plan #1 (6-07-11)	815.8	816.8	20.2	16.8	5.891 CC	
SRC Margil 34BD - Wellbore #1 - Plan #1 (6-07-11)	900.0	900.9	20.4	16.7	5.409 ES	
SRC Margil 34BD - Wellbore #1 - Plan #1 (6-07-11)	1,000.0	1,000.7	22.6	18.4	5.369 SF	

Offset Design	SRC Margil 13-34D Pad Sec.34-T4N-R68W - SRC Margil 14-34D - Wellbore #1 - Plan #1 (6-07-11)												Offset Site Error:	0.0 ft
Survey Program:	0-MWD												Offset Well Error:	0.0 ft
Reference	Offset	Semi Major Axis			Distance									
Measured Depth (ft)	Vertical Depth (ft)	Measured Depth (ft)	Vertical Depth (ft)	Reference (ft)	Offset (ft)	Highside Toolface (°)	Offset Wellbore Centre +N/-S (ft)	+E/-W (ft)	Between Centres (ft)	Between Ellipses (ft)	Minimum Separation (ft)	Separation Factor	Warning	
0.0	0.0	0.0	0.0	0.0	0.0	-151.52	-17.5	-9.5	19.9	19.9	0.00	N/A		
100.0	100.0	100.0	100.0	0.1	0.1	-151.52	-17.5	-9.5	19.9	19.7	0.22	88.514		
200.0	200.0	200.0	200.0	0.3	0.3	-151.52	-17.5	-9.5	19.9	19.2	0.67	29.505		
300.0	300.0	300.0	300.0	0.6	0.6	-151.52	-17.5	-9.5	19.9	18.8	1.12	17.703		
400.0	400.0	400.0	400.0	0.8	0.8	-151.52	-17.5	-9.5	19.9	18.3	1.57	12.645		
500.0	500.0	500.0	500.0	1.0	1.0	-151.52	-17.5	-9.5	19.9	17.9	2.02	9.835		
600.0	600.0	600.0	600.0	1.2	1.2	-151.52	-17.5	-9.5	19.9	17.4	2.47	8.047		
700.0	700.0	700.0	700.0	1.5	1.5	-151.52	-17.5	-9.5	19.9	17.0	2.92	6.809		
750.0	750.0	750.0	750.0	1.6	1.6	-151.52	-17.5	-9.5	19.9	16.7	3.15	6.322 CC		
800.0	800.0	800.0	800.0	1.7	1.7	93.89	-17.5	-9.5	19.9	16.6	3.36	5.926 ES		
900.0	899.9	899.9	899.9	1.9	1.9	103.67	-17.5	-9.5	20.5	16.7	3.78	5.415 SF		
1,000.0	999.7	999.7	999.7	2.1	2.1	120.64	-17.5	-9.5	23.1	18.9	4.21	5.498		
1,100.0	1,099.1	1,099.1	1,099.1	2.3	2.4	138.04	-17.5	-9.5	29.8	25.2	4.64	6.437		
1,200.0	1,198.2	1,198.2	1,198.2	2.6	2.6	150.92	-17.5	-9.5	41.3	36.2	5.06	8.152		
1,300.0	1,296.6	1,297.7	1,297.6	2.9	2.8	157.93	-19.0	-8.7	56.2	50.8	5.47	10.289		
1,400.0	1,394.4	1,397.4	1,397.3	3.2	3.0	160.56	-23.5	-6.3	73.0	67.1	5.85	12.465		
1,500.0	1,491.5	1,497.4	1,496.9	3.6	3.2	161.06	-31.1	-2.3	91.0	84.8	6.26	14.532		
1,600.0	1,587.6	1,597.5	1,596.3	4.1	3.4	160.44	-41.9	3.3	110.4	103.7	6.72	16.439		
1,700.0	1,682.7	1,697.7	1,695.2	4.7	3.6	159.20	-55.6	10.6	131.1	123.8	7.22	18.149		
1,800.0	1,776.6	1,797.9	1,793.6	5.3	3.9	157.62	-72.5	19.5	153.1	145.3	7.80	19.624		
1,900.0	1,869.4	1,898.0	1,891.2	6.0	4.2	155.85	-92.4	29.9	176.5	168.0	8.47	20.833		

CC - Min centre to center distance or convergent point, SF - min separation factor, ES - min ellipse separation

Company: Synergy Resources
Project: SEC.34-T4N-R68W
Reference Site: SRC Margil 13-34D Pad Sec.34-T4N-R68W
Site Error: 0.0ft
Reference Well: SRC Margil 24-34D
Well Error: 0.0ft
Reference Wellbore: Wellbore #1
Reference Design: Plan #1 (6-07-11)

Local Co-ordinate Reference: Well SRC Margil 24-34D
TVD Reference: WELL @ 5145.0ft (Original Well Elev)
MD Reference: WELL @ 5145.0ft (Original Well Elev)
North Reference: True
Survey Calculation Method: Minimum Curvature
Output errors are at 2.00 sigma
Database: Landmark
Offset TVD Reference: Offset Datum

Offset Design SRC Margil 13-34D Pad Sec.34-T4N-R68W - SRC Margil 14-34D - Wellbore #1 - Plan #1 (6-07-11)														Offset Site Error:	0.0 ft
Survey Program: 0-MWD														Offset Well Error:	0.0 ft
Reference		Offset		Semi Major Axis			Distance							Warning	
Measured Depth (ft)	Vertical Depth (ft)	Measured Depth (ft)	Vertical Depth (ft)	Reference (ft)	Offset (ft)	Highside Toolface (°)	Offset Wellbore Centre +N-S (ft)	+E-W (ft)	Between Centres (ft)	Between Ellipses (ft)	Minimum Separation (ft)	Separation Factor			
2,000.0	1,960.7	1,996.6	1,986.5	6.8	4.6	154.08	-114.6	41.7	201.6	192.3	9.24	21.804			
2,042.7	1,999.2	2,037.7	2,026.1	7.2	4.8	153.50	-124.1	46.7	213.1	203.5	9.60	22.198			
2,100.0	2,050.8	2,092.7	2,079.3	7.7	5.0	153.00	-136.8	53.4	229.0	218.9	10.10	22.660			
2,200.0	2,140.8	2,188.8	2,172.0	8.6	5.4	152.27	-159.0	65.0	256.7	245.7	11.03	23.280			
2,300.0	2,230.8	2,284.8	2,264.7	9.5	5.9	151.68	-181.2	76.7	284.4	272.4	11.98	23.743			
2,400.0	2,320.8	2,380.8	2,357.4	10.4	6.4	151.19	-203.4	88.4	312.2	299.2	12.96	24.094			
2,500.0	2,410.8	2,476.9	2,450.1	11.3	6.8	150.79	-225.6	100.1	340.0	326.0	13.96	24.361			
2,600.0	2,500.8	2,572.9	2,542.8	12.2	7.3	150.44	-247.8	111.8	367.8	352.8	14.97	24.567			
2,700.0	2,590.8	2,669.0	2,635.5	13.1	7.8	150.15	-270.0	123.4	395.6	379.6	16.00	24.727			
2,800.0	2,680.8	2,765.0	2,728.2	14.1	8.3	149.89	-292.2	135.1	423.4	406.4	17.04	24.853			
2,900.0	2,770.8	2,861.0	2,820.9	15.0	8.8	149.67	-314.3	146.8	451.2	433.2	18.08	24.952			
3,000.0	2,860.8	2,957.1	2,913.6	15.9	9.3	149.47	-336.5	158.5	479.1	459.9	19.14	25.030			
3,100.0	2,950.8	3,053.1	3,006.3	16.9	9.8	149.29	-358.7	170.2	506.9	486.7	20.20	25.093			
3,200.0	3,040.7	3,149.1	3,099.0	17.8	10.3	149.13	-380.9	181.9	534.8	513.5	21.27	25.143			
3,300.0	3,130.7	3,245.2	3,191.7	18.8	10.8	148.99	-403.1	193.5	562.6	540.3	22.34	25.183			
3,400.0	3,220.7	3,341.2	3,284.4	19.7	11.3	148.86	-425.3	205.2	590.5	567.0	23.42	25.215			
3,500.0	3,310.7	3,437.2	3,377.1	20.6	11.8	148.74	-447.5	216.9	618.3	593.8	24.50	25.240			
3,600.0	3,400.7	3,533.3	3,469.8	21.6	12.4	148.63	-469.7	228.6	646.2	620.6	25.58	25.261			
3,700.0	3,490.7	3,629.3	3,562.5	22.5	12.9	148.54	-491.8	240.3	674.0	647.3	26.67	25.277			
3,800.0	3,580.7	3,725.4	3,655.2	23.5	13.4	148.44	-514.0	252.0	701.9	674.1	27.75	25.290			
3,900.0	3,670.7	3,821.4	3,747.9	24.4	13.9	148.36	-536.2	263.6	729.7	700.9	28.84	25.300			
4,000.0	3,760.7	3,917.4	3,840.6	25.4	14.4	148.28	-558.4	275.3	757.6	727.7	29.94	25.308			
4,100.0	3,850.7	4,013.5	3,933.3	26.3	15.0	148.21	-580.6	287.0	785.4	754.4	31.03	25.313			
4,200.0	3,940.7	4,109.5	4,026.0	27.3	15.5	148.14	-602.8	298.7	813.3	781.2	32.12	25.317			
4,300.0	4,030.7	4,205.5	4,118.7	28.2	16.0	148.08	-625.0	310.4	841.2	807.9	33.22	25.320			
4,400.0	4,120.6	4,301.6	4,211.5	29.2	16.5	148.02	-647.2	322.1	869.0	834.7	34.32	25.322			
4,500.0	4,210.6	4,397.6	4,304.2	30.1	17.1	147.97	-669.4	333.7	896.9	861.5	35.42	25.323			
4,600.0	4,300.6	4,493.8	4,396.9	31.1	17.6	147.91	-691.5	345.4	924.8	886.2	36.52	25.323			
4,700.0	4,390.6	4,589.7	4,489.6	32.0	18.1	147.87	-713.7	357.1	952.6	915.0	37.62	25.322			
4,800.0	4,480.6	4,685.7	4,582.3	33.0	18.7	147.82	-735.9	368.8	980.5	941.8	38.72	25.321			
4,900.0	4,570.6	4,781.7	4,675.0	33.9	19.2	147.78	-758.1	380.5	1,008.4	968.5	39.83	25.319			
5,000.0	4,660.6	4,875.7	4,765.7	34.9	19.7	147.74	-779.8	391.9	1,036.2	995.3	40.91	25.331			
5,100.0	4,750.6	4,959.4	4,846.9	35.8	20.0	147.79	-797.7	401.3	1,064.9	1,023.1	41.80	25.476			
5,200.0	4,840.6	5,042.4	4,927.9	36.8	20.3	147.96	-813.4	409.6	1,094.6	1,052.0	42.60	25.698			
5,211.3	4,850.8	5,051.7	4,937.1	36.9	20.4	147.98	-815.1	410.5	1,098.0	1,055.3	42.68	25.725			
5,300.0	4,931.2	5,124.9	5,009.0	37.6	20.6	148.49	-827.0	416.7	1,124.3	1,081.0	43.29	25.974			
5,400.0	5,023.1	5,207.4	5,090.5	38.3	20.8	149.05	-838.4	422.8	1,152.3	1,108.5	43.84	26.287			
5,500.0	5,116.4	5,289.8	5,172.2	38.9	21.0	149.61	-847.8	427.7	1,178.7	1,134.4	44.31	26.603			
5,600.0	5,211.0	5,372.2	5,254.2	39.5	21.2	150.17	-855.1	431.6	1,203.2	1,158.6	44.69	26.924			
5,700.0	5,306.5	5,454.5	5,336.3	40.0	21.4	150.72	-860.3	434.3	1,226.1	1,181.1	44.99	27.252			
5,800.0	5,403.1	5,536.7	5,418.4	40.5	21.5	151.27	-863.4	435.9	1,247.2	1,202.0	45.21	27.588			
5,900.0	5,500.5	5,618.8	5,500.5	40.9	21.6	151.82	-864.5	436.5	1,266.7	1,221.3	45.35	27.931			
6,000.0	5,598.6	5,716.9	5,598.6	41.2	21.7	152.39	-864.5	436.5	1,283.7	1,238.3	45.43	28.257			
6,100.0	5,697.4	5,815.7	5,697.4	41.5	21.8	152.84	-864.5	436.5	1,297.8	1,252.3	45.50	28.520			
6,200.0	5,796.6	5,914.9	5,796.6	41.7	21.9	153.19	-864.5	436.5	1,308.8	1,263.2	45.58	28.716			
6,300.0	5,896.2	6,014.5	5,896.2	41.9	22.0	153.43	-864.5	436.5	1,316.7	1,271.0	45.64	28.847			
6,400.0	5,996.0	6,114.4	5,996.0	42.0	22.1	153.58	-864.5	436.5	1,321.5	1,275.8	45.71	28.912			
6,504.0	6,100.0	6,218.3	6,100.0	42.1	22.3	-90.52	-864.5	436.5	1,323.2	1,277.4	45.78	28.905			
6,600.0	6,196.0	6,314.3	6,196.0	42.2	22.4	-90.52	-864.5	436.5	1,323.2	1,277.2	45.99	28.770			
6,700.0	6,296.0	6,414.3	6,296.0	42.2	22.5	-90.52	-864.5	436.5	1,323.2	1,277.0	46.21	28.631			
6,800.0	6,396.0	6,514.3	6,396.0	42.3	22.6	-90.52	-864.5	436.5	1,323.2	1,276.7	46.44	28.491			
6,900.0	6,496.0	6,614.3	6,496.0	42.4	22.7	-90.52	-864.5	436.5	1,323.2	1,276.5	46.67	28.351			

CC - Min centre to center distance or convergent point, SF - min separation factor, ES - min ellipse separation

Company: Synergy Resources
Project: SEC.34-T4N-R68W
Reference Site: SRC Margil 13-34D Pad Sec.34-T4N-R68W
Site Error: 0.0ft
Reference Well: SRC Margil 24-34D
Well Error: 0.0ft
Reference Wellbore: Wellbore #1
Reference Design: Plan #1 (6-07-11)

Local Co-ordinate Reference: Well SRC Margil 24-34D
TVD Reference: WELL @ 5145.0ft (Original Well Elev)
MD Reference: WELL @ 5145.0ft (Original Well Elev)
North Reference: True
Survey Calculation Method: Minimum Curvature
Output errors are at: 2.00 sigma
Database: Landmark
Offset TVD Reference: Offset Datum

Offset Design SRC Margil 13-34D Pad Sec.34-T4N-R68W - SRC Margil 14-34D - Wellbore #1 - Plan #1 (6-07-11)													Offset Site Error:	0.0 ft
Survey Program: 0-MWD													Offset Well Error:	0.0 ft
Reference		Offset		Semi Major Axis			Distance						Warning	
Measured Depth (ft)	Vertical Depth (ft)	Measured Depth (ft)	Vertical Depth (ft)	Reference (ft)	Offset (ft)	Highside Toolface (°)	Offset Wellbore Centre +N/-S (ft)	+E/-W (ft)	Between Centres (ft)	Between Ellipses (ft)	Minimum Separation (ft)	Separation Factor		
7,000.0	6,596.0	6,714.3	6,596.0	42.4	22.8	-90.52	-864.5	436.5	1,323.2	1,276.3	48.90	28.210		
7,100.0	6,696.0	6,814.3	6,696.0	42.5	23.0	-90.52	-864.5	436.5	1,323.2	1,276.0	47.14	28.069		
7,200.0	6,796.0	6,914.3	6,796.0	42.6	23.1	-90.52	-864.5	436.5	1,323.2	1,275.8	47.38	27.927		
7,300.0	6,896.0	7,014.3	6,896.0	42.6	23.2	-90.52	-864.5	436.5	1,323.2	1,275.6	47.62	27.785		
7,400.0	6,996.0	7,114.3	6,996.0	42.7	23.3	-90.52	-864.5	436.5	1,323.2	1,275.3	47.87	27.643		
7,500.0	7,096.0	7,214.3	7,096.0	42.8	23.5	-90.52	-864.5	436.5	1,323.2	1,275.1	48.12	27.500		
7,600.0	7,196.0	7,314.3	7,196.0	42.9	23.6	-90.52	-864.5	436.5	1,323.2	1,274.8	48.37	27.357		
7,700.0	7,296.0	7,414.3	7,296.0	42.9	23.7	-90.52	-864.5	436.5	1,323.2	1,274.6	48.62	27.215		
7,800.0	7,396.0	7,514.3	7,396.0	43.0	23.9	-90.52	-864.5	436.5	1,323.2	1,274.3	48.88	27.072		
7,900.0	7,496.0	7,614.3	7,496.0	43.1	24.0	-90.52	-864.5	436.5	1,323.2	1,274.0	49.14	26.929		
8,000.0	7,596.0	7,714.3	7,596.0	43.2	24.1	-90.52	-864.5	436.5	1,323.2	1,273.8	49.40	26.786		
8,100.0	7,696.0	7,814.3	7,696.0	43.3	24.3	-90.52	-864.5	436.5	1,323.2	1,273.5	49.66	26.643		
8,200.0	7,796.0	7,914.3	7,796.0	43.4	24.4	-90.52	-864.5	436.5	1,323.2	1,273.2	49.93	26.500		
8,300.0	7,896.0	8,014.3	7,896.0	43.4	24.6	-90.52	-864.5	436.5	1,323.2	1,273.0	50.20	26.358		
8,344.0	7,940.0	8,058.3	7,940.0	43.5	24.6	-90.52	-864.5	436.5	1,323.2	1,272.9	50.32	26.295		

Company: Synergy Resources
Project: SEC.34-T4N-R68W
Reference Site: SRC Margil 13-34D Pad Sec.34-T4N-R68W
Site Error: 0.0ft
Reference Well: SRC Margil 24-34D
Well Error: 0.0ft
Reference Wellbore: Wellbore #1
Reference Design: Plan #1 (6-07-11)

Local Co-ordinate Reference: Well SRC Margil 24-34D
TVD Reference: WELL @ 5145.0ft (Original Well Elev)
MD Reference: WELL @ 5145.0ft (Original Well Elev)
North Reference: True
Survey Calculation Method: Minimum Curvature
Output errors are at: 2.00 sigma
Database: Landmark
Offset TVD Reference: Offset Datum

Offset Design SRC Margil 13-34D Pad Sec.34-T4N-R68W - SRC Margil 34BD - Wellbore #1 - Plan #1 (6-07-11)													Offset Site Error:	0.0 ft
Survey Program: 0-MWD													Offset Well Error:	0.0 ft
Measured Depth (ft)	Vertical Depth (ft)	Measured Depth (ft)	Vertical Depth (ft)	Reference	Offset	Semi Major Axis (ft)	Highside Footface (")	Offset Wellbore Centre +N-S (ft)	+E-W (ft)	Distance Between Centres (ft)	Between Ellipses (ft)	Minimum Separation (ft)	Separation Factor	Warning
0.0	0.0	1.0	1.0	0.0	0.0	27.99	27.99	17.9	9.5	20.2	20.2	0.00	N/A	
100.0	100.0	101.0	101.0	0.1	0.1	27.99	27.99	17.9	9.5	20.2	20.0	0.23	89.052	
200.0	200.0	201.0	201.0	0.3	0.3	27.99	27.99	17.9	9.5	20.2	19.5	0.88	29.881	
300.0	300.0	301.0	301.0	0.6	0.6	27.99	27.99	17.9	9.5	20.2	19.1	1.13	17.953	
400.0	400.0	401.0	401.0	0.8	0.8	27.99	27.99	17.9	9.5	20.2	18.6	1.58	12.831	
500.0	500.0	501.0	501.0	1.0	1.0	27.99	27.99	17.9	9.5	20.2	18.2	2.03	9.982	
600.0	600.0	601.0	601.0	1.2	1.2	27.99	27.99	17.9	9.5	20.2	17.7	2.47	8.169	
700.0	700.0	701.0	701.0	1.5	1.5	27.99	27.99	17.9	9.5	20.2	17.3	2.92	6.913	
750.0	750.0	751.0	751.0	1.6	1.6	27.99	27.99	17.9	9.5	20.2	17.1	3.15	6.420	
800.0	800.0	801.0	801.0	1.7	1.7	-89.09	-89.09	17.9	9.5	20.2	16.8	3.36	6.007	
815.8	815.8	816.8	816.8	1.7	1.7	-90.00	-90.00	17.9	9.5	20.2	16.8	3.43	5.891 CC	
900.0	899.9	900.9	900.9	1.9	1.9	-98.90	-98.90	17.9	9.5	20.4	16.7	3.78	5.409 ES	
1,000.0	999.7	1,000.7	1,000.7	2.1	2.1	-116.58	-116.58	17.9	9.5	22.6	18.4	4.21	5.369 SF	
1,100.0	1,099.1	1,100.6	1,100.6	2.3	2.3	-132.32	-132.32	17.5	11.2	28.0	23.4	4.63	6.045	
1,200.0	1,198.2	1,200.8	1,200.6	2.6	2.5	-141.46	-141.46	16.5	16.4	35.4	30.4	5.04	7.022	
1,300.0	1,296.6	1,301.3	1,300.7	2.9	2.8	-146.44	-146.44	14.8	25.0	44.0	38.5	5.47	8.038	
1,400.0	1,394.4	1,402.0	1,400.7	3.2	3.0	-148.98	-148.98	12.4	37.1	53.3	47.3	5.92	8.895	
1,500.0	1,491.5	1,502.9	1,500.4	3.6	3.3	-150.07	-150.07	9.3	52.7	63.2	56.7	6.41	9.848	
1,600.0	1,587.6	1,604.1	1,599.7	4.1	3.6	-150.27	-150.27	5.5	71.7	73.5	66.6	6.96	10.574	
1,700.0	1,682.7	1,705.6	1,698.4	4.7	4.0	-149.90	-149.90	1.1	94.3	84.4	76.9	7.57	11.158	
1,800.0	1,776.6	1,806.9	1,796.2	5.3	4.4	-149.16	-149.16	-4.0	120.2	95.8	87.5	8.26	11.599	
1,900.0	1,869.4	1,906.0	1,891.6	6.0	4.9	-149.00	-149.00	-9.3	146.8	109.2	100.2	9.00	12.139	
2,000.0	1,960.7	2,004.6	1,986.4	6.8	5.4	-149.65	-149.65	-14.5	173.3	125.6	115.9	9.74	12.899	
2,042.7	1,999.2	2,046.5	2,026.7	7.2	5.6	-150.09	-150.09	-16.8	184.5	133.5	123.5	10.05	13.283	
2,100.0	2,050.8	2,102.7	2,080.8	7.7	5.9	-150.78	-150.78	-19.7	199.6	144.5	134.0	10.50	13.765	
2,200.0	2,140.8	2,200.8	2,175.2	8.6	6.4	-151.76	-151.76	-25.0	225.9	163.8	152.5	11.29	14.500	
2,300.0	2,230.8	2,298.9	2,269.6	9.5	6.9	-152.54	-152.54	-30.2	252.2	183.0	170.9	12.10	15.126	
2,400.0	2,320.8	2,397.0	2,363.9	10.4	7.4	-153.16	-153.16	-35.4	278.6	202.3	189.4	12.92	15.883	
2,500.0	2,410.8	2,495.1	2,458.3	11.3	8.0	-153.68	-153.68	-40.6	304.9	221.6	207.9	13.74	16.128	
2,600.0	2,500.8	2,593.2	2,552.6	12.2	8.5	-154.12	-154.12	-45.8	331.2	241.0	226.4	14.57	16.534	
2,700.0	2,590.8	2,691.3	2,647.0	13.1	9.1	-154.49	-154.49	-51.0	357.5	260.3	244.9	15.41	16.891	
2,800.0	2,680.8	2,789.4	2,741.3	14.1	9.6	-154.81	-154.81	-56.2	383.9	279.6	263.4	16.25	17.207	
2,900.0	2,770.8	2,887.5	2,835.7	15.0	10.2	-155.09	-155.09	-61.4	410.2	299.0	281.9	17.10	17.487	
3,000.0	2,860.8	2,985.6	2,930.1	15.9	10.7	-155.33	-155.33	-66.6	436.5	318.4	300.4	17.95	17.739	
3,100.0	2,950.8	3,083.7	3,024.4	16.9	11.3	-155.55	-155.55	-71.8	462.8	337.7	318.9	18.80	17.965	
3,200.0	3,040.7	3,181.8	3,118.8	17.8	11.8	-155.74	-155.74	-77.0	489.2	357.1	337.4	19.65	18.169	
3,300.0	3,130.7	3,279.9	3,213.1	18.8	12.4	-155.91	-155.91	-82.2	515.5	376.5	356.0	20.51	18.355	
3,400.0	3,220.7	3,378.0	3,307.5	19.7	13.0	-156.07	-156.07	-87.4	541.8	395.8	374.5	21.37	18.524	
3,500.0	3,310.7	3,476.1	3,401.8	20.6	13.5	-156.21	-156.21	-92.6	568.1	415.2	393.0	22.23	18.678	
3,600.0	3,400.7	3,574.2	3,496.2	21.6	14.1	-156.34	-156.34	-97.9	594.5	434.6	411.5	23.09	18.820	
3,700.0	3,490.7	3,672.3	3,590.6	22.5	14.7	-156.46	-156.46	-103.1	620.8	454.0	430.0	23.96	18.951	
3,800.0	3,580.7	3,770.4	3,684.9	23.5	15.2	-156.57	-156.57	-108.3	647.1	473.4	448.5	24.82	19.072	
3,900.0	3,670.7	3,868.5	3,779.3	24.4	15.8	-156.67	-156.67	-113.5	673.4	492.8	467.1	25.69	19.184	
4,000.0	3,760.7	3,966.6	3,873.6	25.4	16.4	-156.76	-156.76	-118.7	699.8	512.1	485.6	26.55	19.288	
4,100.0	3,850.7	4,064.7	3,968.0	26.3	16.9	-156.84	-156.84	-123.9	726.1	531.5	504.1	27.42	19.384	
4,200.0	3,940.7	4,162.8	4,062.3	27.3	17.5	-156.92	-156.92	-129.1	752.4	550.9	522.6	28.29	19.474	
4,300.0	4,030.7	4,260.9	4,156.7	28.2	18.1	-157.00	-157.00	-134.3	778.7	570.3	541.2	29.16	19.559	
4,400.0	4,120.6	4,359.0	4,251.1	29.2	18.6	-157.07	-157.07	-139.5	805.1	589.7	559.7	30.03	19.638	
4,500.0	4,210.6	4,457.1	4,345.4	30.1	19.2	-157.13	-157.13	-144.7	831.4	609.1	578.2	30.90	19.712	
4,600.0	4,300.6	4,555.2	4,439.8	31.1	19.8	-157.19	-157.19	-149.9	857.7	628.5	596.7	31.77	19.782	
4,700.0	4,390.6	4,653.3	4,534.1	32.0	20.3	-157.25	-157.25	-155.1	884.0	647.9	615.2	32.64	19.848	
4,800.0	4,480.6	4,751.4	4,628.5	33.0	20.9	-157.30	-157.30	-160.3	910.4	667.3	633.8	33.52	19.910	

CC - Min centre to center distance or convergent point SF - min separation factor, ES - min ellipse separation

Company: Synergy Resources
Project: SEC.34-T4N-R68W
Reference Site: SRC Margil 13-34D Pad Sec.34-T4N-R68W
Site Error: 0.0ft
Reference Well: SRC Margil 24-34D
Well Error: 0.0ft
Reference Wellbore: Wellbore #1
Reference Design: Plan #1 (6-07-11)

Local Co-ordinate Reference: Well SRC Margil 24-34D
TVD Reference: WELL @ 5145.0ft (Original Well Elev)
MD Reference: WELL @ 5145.0ft (Original Well Elev)
North Reference: True
Survey Calculation Method: Minimum Curvature
Output errors are at: 2.00 sigma
Database: Landmark
Offset TVD Reference: Offset Datum

Offset Design SRC Margil 13-34D Pad Sec.34-T4N-R68W - SRC Margil 34BD - Wellbore #1 - Plan #1 (6-07-11)												Offset Site Error:	0.0 ft
Survey Program: 0-MWD												Offset Well Error:	0.0 ft
Reference		Offset		Semi Major Axis		Highside Toolface (°)	Offset Wellbore Centre		Distance		Minimum Separation (ft)	Separation Factor	Warning
Measured Depth (ft)	Vertical Depth (ft)	Measured Depth (ft)	Vertical Depth (ft)	Reference (ft)	Offset (ft)		+N/-S (ft)	+E/-W (ft)	Between Centres (ft)	Between Ellipses (ft)			
4,900.0	4,570.6	4,849.5	4,722.8	33.9	21.5	-157.35	-165.5	936.7	686.7	652.3	34.39	19.968	
5,000.0	4,660.6	4,947.6	4,817.2	34.9	22.1	-157.40	-170.7	963.0	706.1	670.8	35.26	20.024	
5,100.0	4,750.6	5,045.7	4,911.6	35.8	22.6	-157.45	-176.0	989.3	725.5	689.3	36.14	20.077	
5,200.0	4,840.6	5,127.7	4,990.6	36.8	23.0	-157.53	-180.1	1,010.4	745.9	709.0	36.88	20.225	
5,211.3	4,850.8	5,136.8	4,999.5	36.9	23.1	-157.55	-180.5	1,012.6	748.3	711.4	36.96	20.249	
5,300.0	4,931.2	5,200.0	5,061.0	37.6	23.3	-157.81	-183.4	1,027.1	767.3	729.8	37.53	20.443	
5,400.0	5,023.1	5,288.3	5,147.4	38.3	23.6	-158.14	-187.0	1,045.1	787.7	749.6	38.12	20.663	
5,500.0	5,116.4	5,368.3	5,226.0	38.9	23.9	-158.46	-189.8	1,059.1	807.3	768.7	38.63	20.900	
5,600.0	5,211.0	5,448.0	5,304.8	39.5	24.1	-158.78	-192.1	1,071.0	825.9	786.8	39.06	21.146	
5,700.0	5,306.5	5,527.5	5,383.7	40.0	24.3	-159.09	-194.0	1,080.7	843.5	804.1	39.41	21.401	
5,800.0	5,403.1	5,600.0	5,455.8	40.5	24.5	-159.40	-195.4	1,087.6	860.2	820.5	39.70	21.668	
5,900.0	5,500.5	5,685.8	5,541.4	40.9	24.6	-159.73	-196.6	1,093.6	875.8	835.9	39.91	21.943	
6,000.0	5,598.6	5,764.6	5,620.1	41.2	24.7	-160.05	-197.2	1,096.8	890.5	850.4	40.05	22.233	
6,100.0	5,697.4	5,844.5	5,700.0	41.5	24.8	-160.38	-197.4	1,097.9	904.2	864.1	40.13	22.534	
6,200.0	5,796.6	5,942.1	5,797.6	41.7	24.9	-160.71	-197.4	1,097.9	915.8	875.7	40.17	22.802	
6,300.0	5,896.2	6,041.7	5,897.2	41.9	25.0	-160.95	-197.4	1,097.9	924.2	884.0	40.21	22.985	
6,400.0	5,996.0	6,141.5	5,997.0	42.0	25.1	-161.09	-197.4	1,097.9	929.3	889.0	40.25	23.087	
6,504.0	6,100.0	6,245.5	6,101.0	42.1	25.2	-45.29	-197.4	1,097.9	931.1	890.8	40.30	23.105	
6,600.0	6,196.0	6,341.5	6,197.0	42.2	25.4	-45.29	-197.4	1,097.9	931.1	890.5	40.55	22.961	
6,700.0	6,296.0	6,441.5	6,297.0	42.2	25.5	-45.29	-197.4	1,097.9	931.1	890.2	40.82	22.810	
6,800.0	6,396.0	6,541.5	6,397.0	42.3	25.6	-45.29	-197.4	1,097.9	931.1	890.0	41.09	22.660	
6,900.0	6,496.0	6,641.5	6,497.0	42.4	25.7	-45.29	-197.4	1,097.9	931.1	889.7	41.36	22.510	
7,000.0	6,596.0	6,741.5	6,597.0	42.4	25.8	-45.29	-197.4	1,097.9	931.1	889.4	41.64	22.360	
7,100.0	6,696.0	6,841.5	6,697.0	42.5	25.9	-45.29	-197.4	1,097.9	931.1	889.1	41.92	22.211	
7,200.0	6,796.0	6,941.5	6,797.0	42.6	26.1	-45.29	-197.4	1,097.9	931.1	888.9	42.20	22.062	
7,300.0	6,896.0	7,041.5	6,897.0	42.6	26.2	-45.29	-197.4	1,097.9	931.1	888.6	42.49	21.914	
7,400.0	6,996.0	7,141.5	6,997.0	42.7	26.3	-45.29	-197.4	1,097.9	931.1	888.3	42.78	21.766	
7,500.0	7,096.0	7,241.5	7,097.0	42.8	26.4	-45.29	-197.4	1,097.9	931.1	888.0	43.07	21.619	
7,600.0	7,196.0	7,341.5	7,197.0	42.9	26.6	-45.29	-197.4	1,097.9	931.1	887.7	43.36	21.472	
7,700.0	7,296.0	7,441.5	7,297.0	42.9	26.7	-45.29	-197.4	1,097.9	931.1	887.4	43.66	21.327	
7,800.0	7,396.0	7,541.5	7,397.0	43.0	26.8	-45.29	-197.4	1,097.9	931.1	887.1	43.96	21.182	
7,900.0	7,496.0	7,641.5	7,497.0	43.1	27.0	-45.29	-197.4	1,097.9	931.1	886.8	44.26	21.037	
8,000.0	7,596.0	7,741.5	7,597.0	43.2	27.1	-45.29	-197.4	1,097.9	931.1	886.5	44.56	20.894	
8,100.0	7,696.0	7,841.5	7,697.0	43.3	27.2	-45.29	-197.4	1,097.9	931.1	886.2	44.87	20.751	
8,200.0	7,796.0	7,941.5	7,797.0	43.4	27.4	-45.29	-197.4	1,097.9	931.1	885.9	45.18	20.609	
8,300.0	7,896.0	8,041.5	7,897.0	43.4	27.5	-45.29	-197.4	1,097.9	931.1	885.6	45.49	20.468	
8,329.0	7,925.0	8,070.5	7,926.0	43.5	27.5	-45.29	-197.4	1,097.9	931.1	885.5	45.58	20.428	
8,344.0	7,940.0	8,084.5	7,940.0	43.5	27.5	-45.29	-197.4	1,097.9	931.1	885.4	45.62	20.408	

Company: Synergy Resources
Project: SEC.34-T4N-R68W
Reference Site: SRC Margil 13-34D Pad Sec.34-T4N-R68W
Site Error: 0.0ft
Reference Well: SRC Margil 24-34D
Well Error: 0.0ft
Reference Wellbore: Wellbore #1
Reference Design: Plan #1 (6-07-11)

Local Co-ordinate Reference: Well SRC Margil 24-34D
TVD Reference: WELL @ 5145.0ft (Original Well Elev)
MD Reference: WELL @ 5145.0ft (Original Well Elev)
North Reference: True
Survey Calculation Method: Minimum Curvature
Output errors are at: 2.00 sigma
Database: Landmark
Offset TVD Reference: Offset Datum

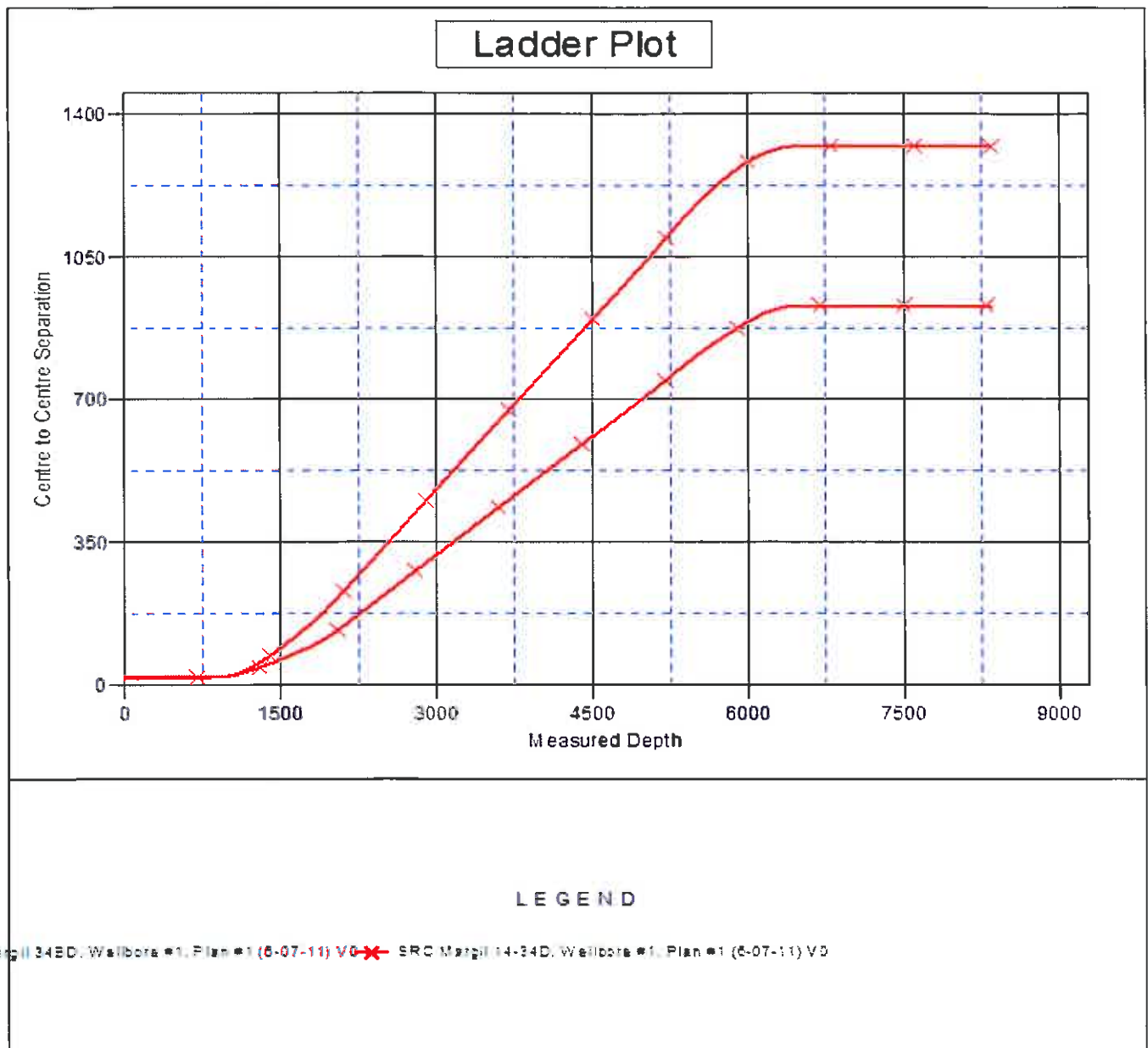
Reference Depths are relative to WELL @ 5145.0ft (Original Well Elev) Coordinates are relative to: SRC Margil 24-34D

Offset Depths are relative to Offset Datum

Coordinate System is US State Plane 1983, Colorado Northern Zone

Central Meridian is -105.500000 °

Grid Convergence at Surface is: 0.32°



Company: Synergy Resources
Project: SEC.34-T4N-R68W
Reference Site: SRC Margil 13-34D Pad Sec.34-T4N-R68W
Site Error: 0.0ft
Reference Well: SRC Margil 24-34D
Well Error: 0.0ft
Reference Wellbore: Wellbore #1
Reference Design: Plan #1 (6-07-11)

Local Co-ordinate Reference: Well SRC Margil 24-34D
TVD Reference: WELL @ 5145.0ft (Original Well Elev)
MD Reference: WELL @ 5145.0ft (Original Well Elev)
North Reference: True
Survey Calculation Method: Minimum Curvature
Output errors are at: 2.00 sigma
Database: Landmark
Offset TVD Reference: Offset Datum

Reference Depths are relative to WELL @ 5145.0ft (Original Well Elev) Coordinates are relative to: SRC Margil 24-34D

Offset Depths are relative to Offset Datum

Coordinate System is US State Plane 1983, Colorado Northern Zone

Central Meridian is -105.500000 °

Grid Convergence at Surface is: 0.32°

