

T4S, R96W, 6th P.M.

Encana OIL & GAS (USA) INC.

Well location, SG 8515C-25 D36 496 (SURFACE LOCATION), located as shown in Lot 4 of Section 36, T4S, R96W, 6th P.M., Garfield County, Colorado.

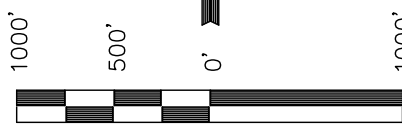
BASIS OF ELEVATION

BENCH MARK (H79) LOCATED IN THE NE 1/4 OF SECTION 35, T4S, R98W, 6th P.M. TAKEN FROM THE BULL FORK QUADRANGLE, COLORADO, 7.5 MINUTE SERIES (TOPO GRAPHICAL MAP) PUBLISHED BY THE UNITED STATES DEPARTMENT OF THE INTERIOR, GEOLOGICAL SURVEY. SAID ELEVATION IS MARKED AS BEING 8535 FEET.

BASIS OF BEARINGS

BASIS OF BEARINGS IS A G.P.S. OBSERVATION.

Sheet 1y of 11



SCALE

CERTIFICATE

THIS IS TO CERTIFY THAT THE ABOVE PLAT WAS PREPARED FROM FIELD NOTES OF ACTUAL SURVEYS MADE BY ME OR UNDER MY SUPERVISION AND THAT THE SAME ARE TRUE AND CORRECT TO THE BEST OF MY KNOWLEDGE AND BELIEF.

REGISTERED LAND SURVEYOR
REGISTRATION NO. 17492
STATE OF COLORADO
05-20-2011

Revised: 05-18-11 D.R.B.
Revised: 07-26-10 D.R.B.

UINTAH ENGINEERING & LAND SURVEYING
85 SOUTH 200 EAST - VERNAL, UTAH 84078
(435) 789-1017

1953 Brass Cap
0.8' High, Mound
of Stones
Lat: 39.666042°
Long: 108.126567°

1953 Brass Cap
0.6' High, Steel
Post
Lat: 39.666053°
Long: 108.117142°

1953 Brass Cap
0.4' High
Lat: 39.666064°
Long: 108.107683°

S89°46'52"W - 2653.74' (Meas.)

S89°44'26"W - 2664.30' (Meas.)

COC065557

SG 8515C-25 D36 496
Elev. Ungraded Ground = 8301.8'
Elev. Graded Ground = 8290.6'

Lot 1

Lot 4

Lot 3

Lot 2

SEE SHEET 7A FOR EXISTING
IMPROVEMENT WITHIN 400' OF THE
PROPOSED WELL DISTURBANCE

36

NOTE:
THE PROPOSED BOTTOM HOLE FOR THIS WELL IS
LOCATED IN THE SW 1/4 SE 1/4 OF SECTION
25, T4S, R96W, 6th P.M. AT A DISTANCE OF
779' FSL 1996' FEL. IT BEARS N62°48'37"E
2540.85' FROM THE PROPOSED WELL HEAD.

COC061138

1953 Brass Cap
0.4' High, "T" Post
Lat: 39.658806°
Long: 108.107661°

1953 Brass Cap
1.1' High, E-W
Fenceline, Steel
Post
Lat: 39.651533°
Long: 108.117317°

1953 Brass Cap
0.5' High, E-W
Fenceline
Lat: 39.651553°
Long: 108.107675°

1953 Brass Cap
0.5' High, "T"
Post
Lat: 39.658806°
Long: 108.126564°

1953 Brass Cap 0.3'
High, Mound of Stones
Lat: 39.658633°
Long: 108.126569°

Lot 5

Lot 6

COC065557

1953 Brass Cap
0.8' High, N-E-W
Fenceline, 3" PVC
Post
Lat: 39.651453°
Long: 108.126700°

T4S
T5S

S89°13'57"W - 2643.54' (Meas.)

S89°40'37"W - 2715.77' (Meas.)

LEGEND:

- └─ = 90° SYMBOL
- = PROPOSED WELL HEAD.
- ▲ = SECTION CORNERS LOCATED.

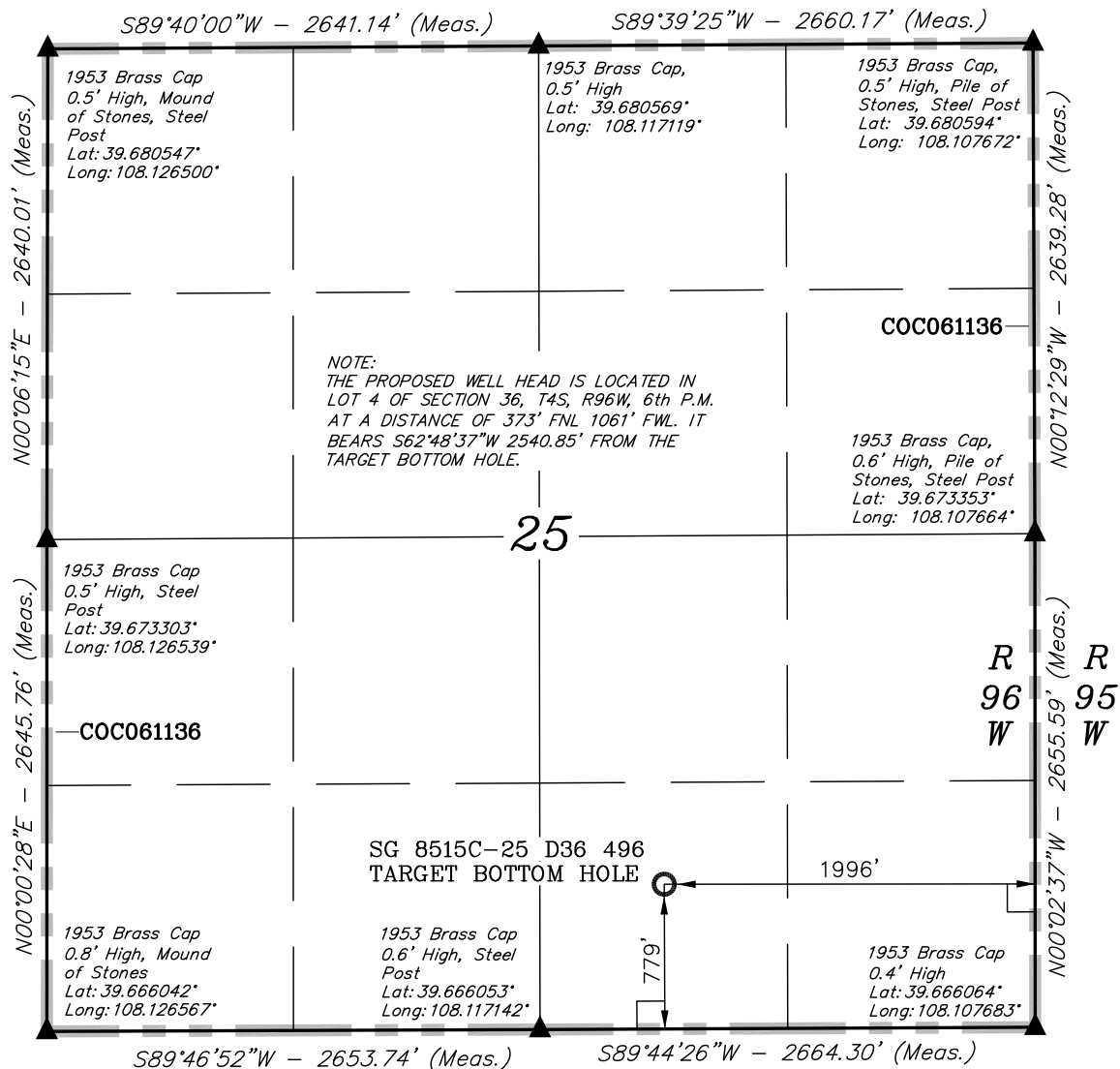
LINE TABLE		
LINE	BEARING	LENGTH
L1	S00°52'27"W	62.59'

PDOP = 1.8

NAD 83 (SURFACE LOCATION)	
LATITUDE	= 39°39'54.08" (39.665022)
LONGITUDE	= 108°07'22.08" (108.122800)
NAD 27 (SURFACE LOCATION)	
LATITUDE	= 39°39'54.17" (39.665047)
LONGITUDE	= 108°07'19.79" (108.122164)

SCALE 1" = 1000'	DATE SURVEYED: 08-01-09	DATE DRAWN: 10-29-09
PARTY D.K. B.H. D.R.B.	REFERENCES G.L.O. PLAT	
WEATHER COOL	FILE Encana OIL & GAS (USA) INC.	

T4S, R96W, 6th P.M.



LEGEND:

- └─┘ = 90° SYMBOL
- = PROPOSED WELL HEAD.
- ▲ = SECTION CORNERS LOCATED.

NAD 83 (TARGET BOTTOM HOLE)	
LATITUDE	= 39°40'05.49" (39.668192)
LONGITUDE	= 108°06'53.15" (108.114764)
NAD 27 (TARGET BOTTOM HOLE)	
LATITUDE	= 39°40'05.58" (39.668217)
LONGITUDE	= 108°06'50.87" (108.114131)

Encana OIL & GAS (USA) INC.

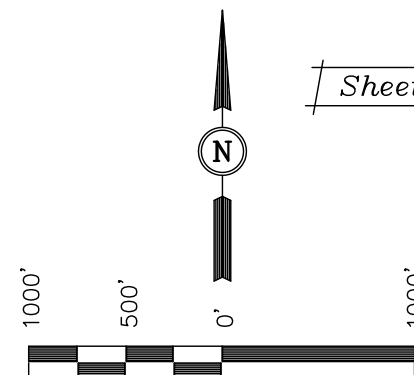
Well location, SG 8515C-25 D36 496 (TARGET BOTTOM HOLE), located as shown in the SE 1/4 SW 1/4 of Section 25, T4S, R96W, 6th P.M., Garfield County, Colorado.

BASIS OF ELEVATION

BENCH MARK (H79) LOCATED IN THE NE 1/4 OF SECTION 35, T4S, R98W, 6th P.M. TAKEN FROM THE BULL FORK QUADRANGLE, COLORADO, 7.5 MINUTE SERIES (TOPO GRAPHICAL MAP) PUBLISHED BY THE UNITED STATES DEPARTMENT OF THE INTERIOR, GEOLOGICAL SURVEY. SAID ELEVATION IS MARKED AS BEING 8535 FEET.

BASIS OF BEARINGS

BASIS OF BEARINGS IS A G.P.S. OBSERVATION.



Sheet 1z of 11

SCALE CERTIFICATE

THIS IS TO CERTIFY THAT THE ABOVE PLAT WAS PREPARED FROM FIELD NOTES OF ACTUAL SURVEYS MADE BY ME OR UNDER MY SUPERVISION AND THAT THE SAME ARE TRUE AND CORRECT TO THE BEST OF MY KNOWLEDGE AND BELIEF.

REGISTERED LAND SURVEYOR
REGISTRATION NO. 17492
STATE OF COLORADO

Revised: 05-18-11 D.R.B.

UINTAH ENGINEERING & LAND SURVEYING
85 SOUTH 200 EAST - VERNAL, UTAH 84078
(435) 789-1017

SCALE 1" = 1000'	DATE SURVEYED: 08-01-09	DATE DRAWN: 07-26-10
PARTY D.K. B.H. D.R.B.	REFERENCES G.L.O. PLAT	
WEATHER COOL	FILE Encana OIL & GAS (USA) INC.	