

T4S, R96W, 6th P.M.

Encana OIL & GAS (USA) INC.

Well location, SG 8515D-25 D36 496 (SURFACE LOCATION), located as shown in Lot 4 of Section 36, T4S, R96W, 6th P.M., Garfield County, Colorado.

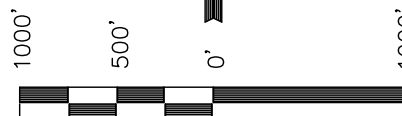
BASIS OF ELEVATION

BENCH MARK (H79) LOCATED IN THE NE 1/4 OF SECTION 35, T4S, R98W, 6th P.M. TAKEN FROM THE BULL FORK QUADRANGLE, COLORADO, 7.5 MINUTE SERIES (TOPO GRAPHICAL MAP) PUBLISHED BY THE UNITED STATES DEPARTMENT OF THE INTERIOR, GEOLOGICAL SURVEY. SAID ELEVATION IS MARKED AS BEING 8535 FEET.

BASIS OF BEARINGS

BASIS OF BEARINGS IS A G.P.S. OBSERVATION.

Sheet 10 of 11



SCALE

CERTIFICATE

THIS IS TO CERTIFY THAT THE ABOVE PLAT WAS PREPARED FROM FIELD NOTES OF ACTUAL SURVEYS MADE BY ME OR UNDER MY SUPERVISION AND THAT THE SAME ARE TRUE AND CORRECT TO THE BEST OF MY KNOWLEDGE AND BELIEF.

REGISTERED LAND SURVEYOR
REGISTRATION NO. 17492
STATE OF COLORADO
05-20-2011

Revised: 05-18-11 D.R.B.
Revised: 07-26-10 D.R.B.

UINTAH ENGINEERING & LAND SURVEYING
85 SOUTH 200 EAST - VERNAL, UTAH 84078
(435) 789-1017

SCALE 1" = 1000'	DATE SURVEYED: 08-01-09	DATE DRAWN: 10-29-09
PARTY D.K. B.H. D.R.B.	REFERENCES G.L.O. PLAT	
WEATHER COOL	FILE Encana OIL & GAS (USA) INC.	

1953 Brass Cap
0.8' High, Mound
of Stones
Lat: 39.666042°
Long: 108.126567°

1953 Brass Cap
0.6' High, Steel
Post
Lat: 39.666053°
Long: 108.117142°

1953 Brass Cap
0.4' High
Lat: 39.666064°
Long: 108.107683°

1953 Brass Cap
0.4' High, "T" Post
Lat: 39.658806°
Long: 108.107661°

SEE SHEET 7A FOR EXISTING
IMPROVEMENT WITHIN 400' OF THE
PROPOSED WELL DISTURBANCE

NOTE:
THE PROPOSED BOTTOM HOLE FOR THIS WELL IS
LOCATED IN THE SW 1/4 SE 1/4 OF SECTION
25, T4S, R96W, 6th P.M. AT A DISTANCE OF
579' FSL 1995' FEL. IT BEARS N66°38'33"E
2471.79' FROM THE PROPOSED WELL HEAD.

COC061138

1953 Brass Cap
1.1' High, E-W
Fenceline, Steel
Post
Lat: 39.651533°
Long: 108.117317°

1953 Brass Cap
0.5' High, E-W
Fenceline
Lat: 39.651553°
Long: 108.107675°

N00°09'03"W - 2637.47' (Meas.)

N00°39'48"E - 2616.60' (Meas.)

N00°18'03"W - 2645.60' (Meas.)

N00°03'42"W - 2642.39' (Meas.)

S89°46'52"W - 2653.74' (Meas.)

S89°44'26"W - 2664.30' (Meas.)

S89°13'57"W - 2643.54' (Meas.)

S89°40'37"W - 2715.77' (Meas.)

SG 8515D-25 D36 496
Elev. Ungraded Ground = 8302.2'
Elev. Graded Ground = 8290.6'

COC061138
1953 Brass Cap
0.5' High, "T"
Post
Lat: 39.658806°
Long: 108.126564°

1953 Brass Cap 0.3'
High, Mound of Stones
Lat: 39.658633°
Long: 108.126569°

COC065556
1953 Brass Cap
0.8' High, N-E-W
Fenceline, 3" PVC
Post
Lat: 39.651453°
Long: 108.126700°

LEGEND:

└─┘ = 90° SYMBOL

● = PROPOSED WELL HEAD.

▲ = SECTION CORNERS LOCATED.

LINE TABLE

LINE	BEARING	LENGTH
L1	S00°52'27"W	62.59'

PDOP = 1.9

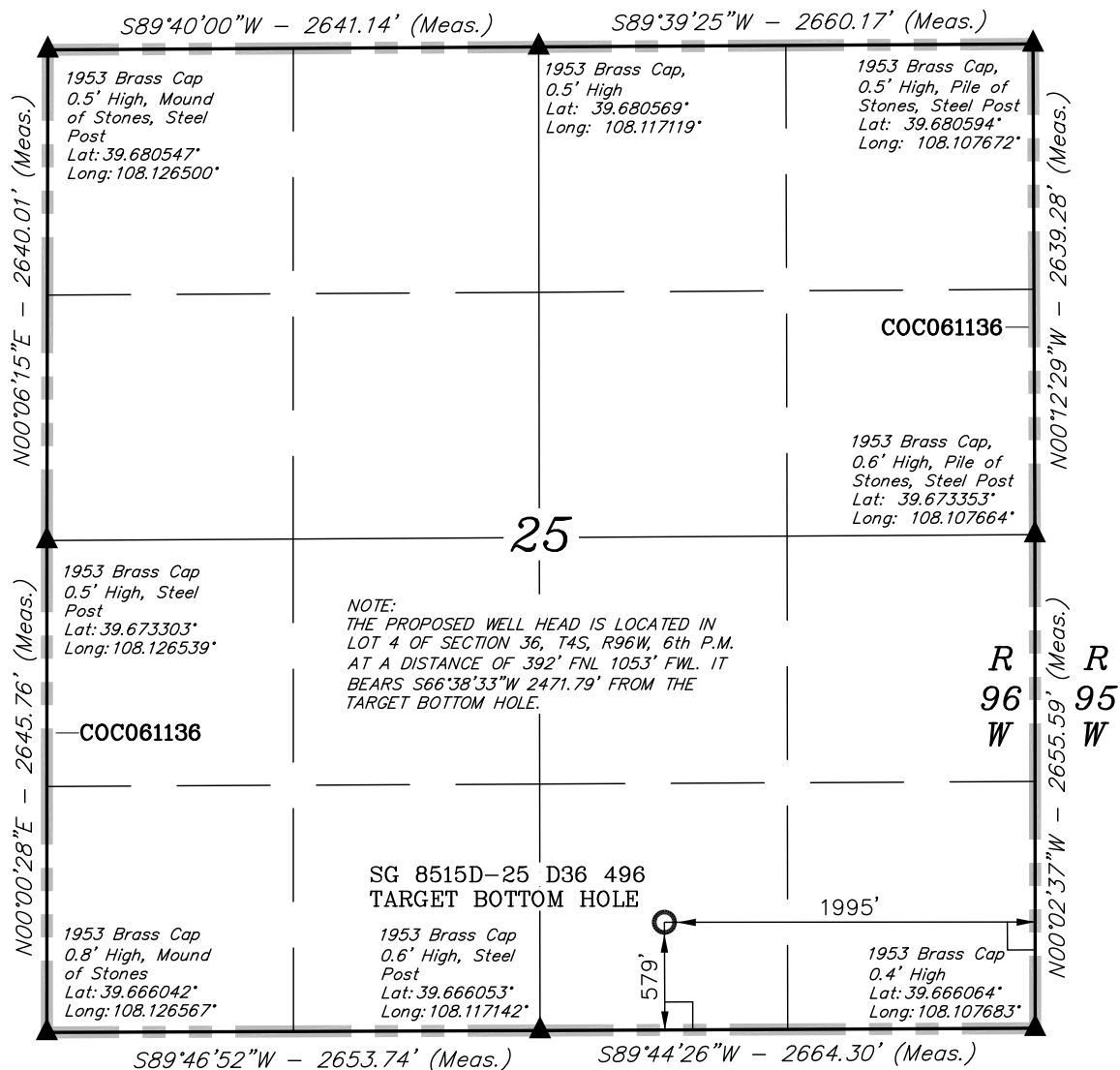
NAD 83 (SURFACE LOCATION)

LATITUDE = 39°39'53.90" (39.664972)
LONGITUDE = 108°07'22.18" (108.122828)

NAD 27 (SURFACE LOCATION)

LATITUDE = 39°39'53.99" (39.664997)
LONGITUDE = 108°07'19.89" (108.122192)

T4S, R96W, 6th P.M.



LEGEND:

- = 90° SYMBOL
- = PROPOSED WELL HEAD.
- ▲ = SECTION CORNERS LOCATED.

NAD 83 (TARGET BOTTOM HOLE)	
LATITUDE	= 39°40'03.52" (39.667644)
LONGITUDE	= 108°06'53.14" (108.114761)
NAD 27 (TARGET BOTTOM HOLE)	
LATITUDE	= 39°40'03.61" (39.667669)
LONGITUDE	= 108°06'50.86" (108.114128)

Encana OIL & GAS (USA) INC.

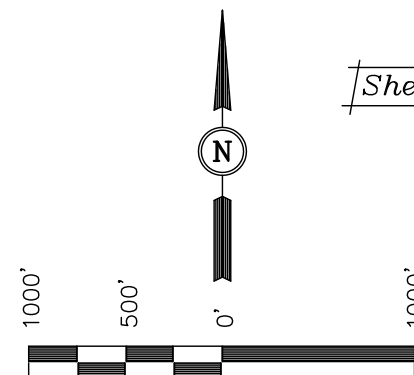
Well location, SG 8515D-25 D36 496 (TARGET BOTTOM HOLE), located as shown in the SE 1/4 SW 1/4 of Section 25, T4S, R96W, 6th P.M., Garfield County, Colorado.

BASIS OF ELEVATION

BENCH MARK (H79) LOCATED IN THE NE 1/4 OF SECTION 35, T4S, R98W, 6th P.M. TAKEN FROM THE BULL FORK QUADRANGLE, COLORADO, 7.5 MINUTE SERIES (TOPO GRAPHICAL MAP) PUBLISHED BY THE UNITED STATES DEPARTMENT OF THE INTERIOR, GEOLOGICAL SURVEY. SAID ELEVATION IS MARKED AS BEING 8535 FEET.

BASIS OF BEARINGS

BASIS OF BEARINGS IS A G.P.S. OBSERVATION.



Sheet 1p of 11

SCALE CERTIFICATE

THIS IS TO CERTIFY THAT THE ABOVE PLAT WAS PREPARED FROM FIELD NOTES OF ACTUAL SURVEYS MADE BY ME OR UNDER MY SUPERVISION AND THAT THE SAME ARE TRUE AND CORRECT TO THE BEST OF MY KNOWLEDGE AND BELIEF.

REGISTERED LAND SURVEYOR
REGISTRATION NO. 17492
STATE OF COLORADO

Revised: 05-18-11 D.R.B.

UINTAH ENGINEERING & LAND SURVEYING
85 SOUTH 200 EAST - VERNAL, UTAH 84078
(435) 789-1017

SCALE 1" = 1000'	DATE SURVEYED: 08-01-09	DATE DRAWN: 07-26-10
PARTY D.K. B.H. D.R.B.	REFERENCES G.L.O. PLAT	
WEATHER COOL	FILE Encana OIL & GAS (USA) INC.	