

Map Unit Description

Weld County, Colorado, Southern Part

82 Wiley-Colby complex, 1 to 3 percent slopes

Setting

Elevation: 4850 to 5000 feet
Mean annual precipitation: 12 to 16 inches
Mean annual air temperature: 48 to 54 degrees F
Frost-free period: 135 to 170 days

Composition

Wiley and similar soils: 60 percent
Colby and similar soils: 30 percent
Minor components: 1 percent

Description of Wiley

Setting

Landform: Plains
Down-slope shape: Linear
Across-slope shape: Linear
Parent material: Calcareous eolian deposits

Properties and Qualities

Slope: 1 to 3 percent
Drainage class: Well drained
Capacity of the most limiting layer to transmit water (Ksat): Moderately high or high (0.60 to 2.00 in/hr)
Frequency of flooding: None
Frequency of ponding: None
Calcium carbonate maximum: 15 percent
Gypsum maximum: 0 percent
Available water capacity: High (about 11.7 inches)

Interpretive Groups

Land capability classification (irrigated): 2e
Land capability (non irrigated): 4e
Ecological site: Loamy Plains (R067BY002CO)

Typical Profile

0 to 11 inches: silt loam
11 to 60 inches: silty clay loam
60 to 64 inches: silty clay loam

Description of Colby

Setting

Landform: Plains
Down-slope shape: Linear
Across-slope shape: Linear
Parent material: Calcareous eolian deposits

Properties and Qualities

Slope: 1 to 3 percent
Drainage class: Well drained
Capacity of the most limiting layer to transmit water (Ksat): Moderately high or high (0.57 to 2.00 in/hr)
Frequency of flooding: None
Frequency of ponding: None
Calcium carbonate maximum: 15 percent
Gypsum maximum: 0 percent
Available water capacity: High (about 10.6 inches)

Interpretive Groups

Land capability classification (irrigated): 3e
Land capability (non irrigated): 4e
Ecological site: Loamy Plains (R067BY002CO)

Typical Profile

0 to 7 inches: loam
7 to 60 inches: silt loam

Map Unit Description

Weld County, Colorado, Southern Part

Minor Components

Aquic argiustolls

Percent of map unit: 1 percent

Landform: Swales

Map Unit Description

Weld County, Colorado, Southern Part

83 Wiley-Colby complex, 3 to 5 percent slopes

Setting

Elevation: 4850 to 5000 feet
Mean annual precipitation: 12 to 16 inches
Mean annual air temperature: 48 to 54 degrees F
Frost-free period: 135 to 170 days

Composition

Wiley and similar soils: 55 percent
Colby and similar soils: 30 percent
Minor components: 1 percent

Description of Wiley

Setting

Landform: Plains
Down-slope shape: Linear
Across-slope shape: Linear
Parent material: Calcareous eolian deposits

Properties and Qualities

Slope: 3 to 5 percent
Drainage class: Well drained
Capacity of the most limiting layer to transmit water (Ksat): Moderately high or high (0.60 to 2.00 in/hr)
Frequency of flooding: None
Frequency of ponding: None
Calcium carbonate maximum: 15 percent
Gypsum maximum: 0 percent
Available water capacity: High (about 11.7 inches)

Interpretive Groups

Land capability classification (irrigated): 3e
Land capability (non irrigated): 4e
Ecological site: Loamy Plains (R067BY002CO)

Typical Profile

0 to 11 inches: silt loam
11 to 60 inches: silty clay loam
60 to 64 inches: silty clay loam

Description of Colby

Setting

Landform: Plains
Down-slope shape: Linear
Across-slope shape: Linear
Parent material: Calcareous eolian deposits

Properties and Qualities

Slope: 3 to 5 percent
Drainage class: Well drained
Capacity of the most limiting layer to transmit water (Ksat): Moderately high or high (0.57 to 2.00 in/hr)
Frequency of flooding: None
Frequency of ponding: None
Calcium carbonate maximum: 15 percent
Gypsum maximum: 0 percent
Available water capacity: High (about 10.6 inches)

Interpretive Groups

Land capability classification (irrigated): 3e
Land capability (non irrigated): 4e
Ecological site: Loamy Plains (R067BY002CO)

Typical Profile

0 to 7 inches: loam
7 to 60 inches: silt loam

Map Unit Description

Weld County, Colorado, Southern Part

Minor Components

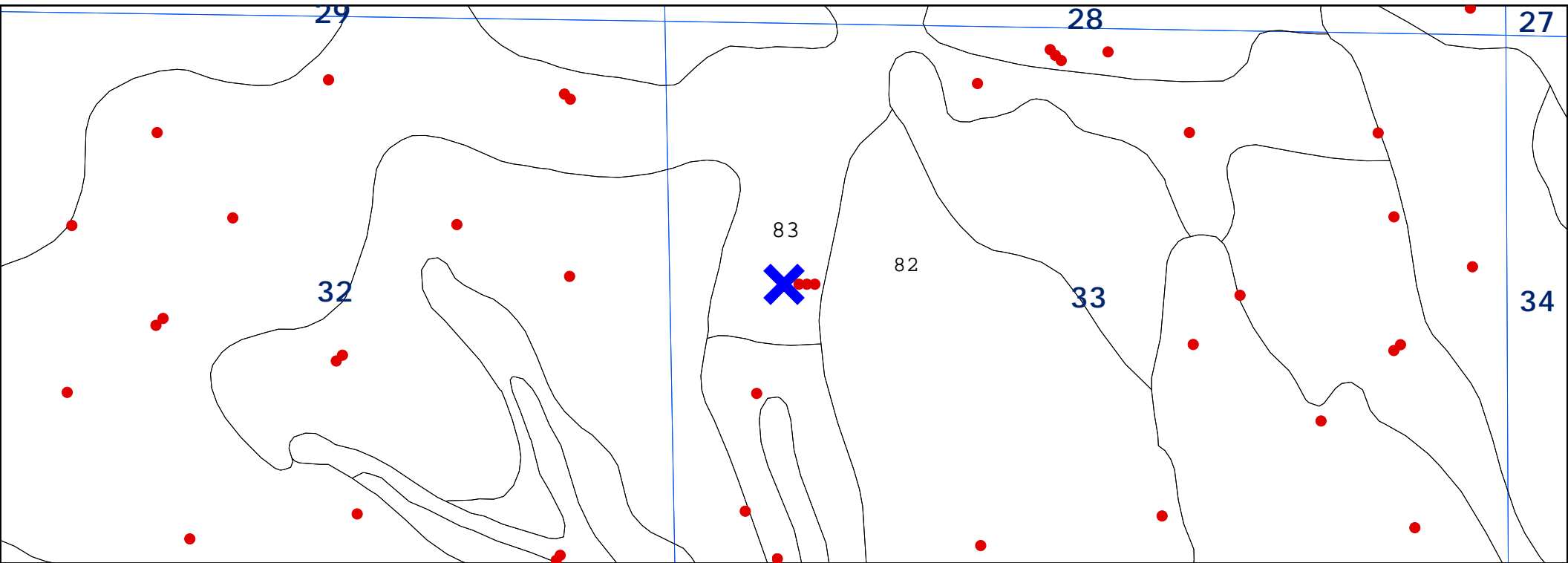
Aquic argiustolls

Percent of map unit: 1 percent

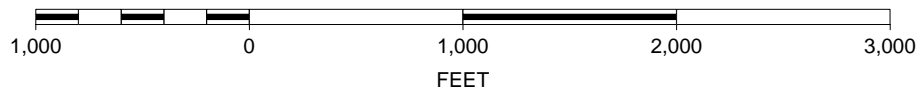
Landform: Swales

82: Wiley-Colby complex, 1-3% slopes

83: Wiley-Colby Complex, 3-5% slopes



SCALE 1 : 10,796



K. P. Kauffman Company, Inc.

Koester #18-33-5

NWSW Section 33-T4N-R67W

Weld Co., Colorado

N

