

LEGEND:

PROPOSED LOCATION

Encana OIL & GAS (USA) INC.

WELL PAD D36 496

SECTION 36, T4S, R96W, 6th P.M.

NW 1/4 NW 1/4

SHEET 8 of 11



Uintah Engineering & Land Surveying
85 South 200 East Vernal, Utah 84078
(435) 789-1017 * FAX (435) 789-1813

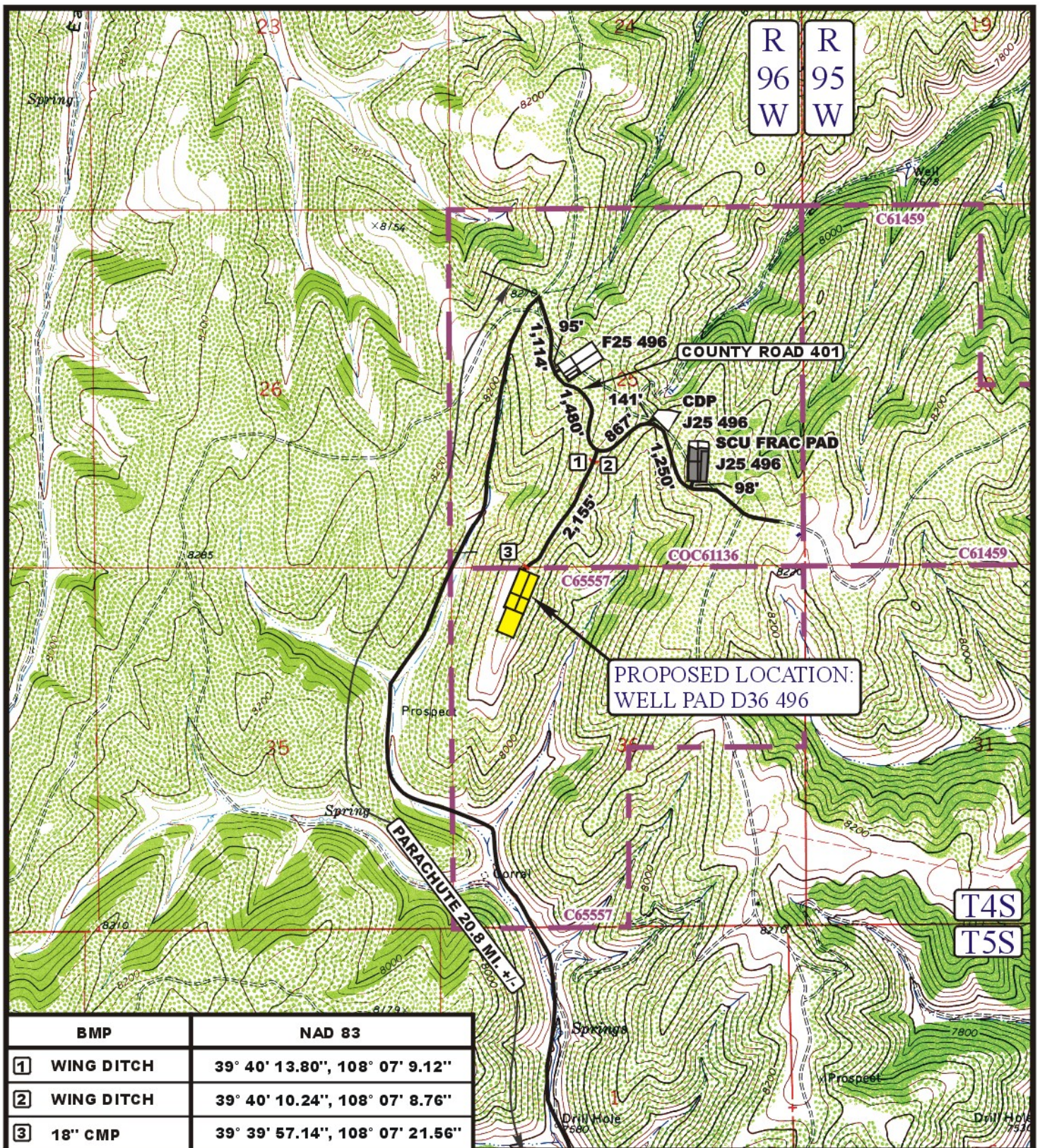


ACCESS ROAD
MAP

8 **5** **09**
MONTH DAY YEAR

SCALE: 1:100,000 DRAWN BY: J.L.G. REVISED: 06-24-11





LEGEND:

PROPOSED ACCESS ROAD
 EXISTING ROAD

Encana OIL & GAS (USA) INC.

WELL PAD D36 496

SECTION 25, T4S, R96W, 6th P.M.

NW 1/4 NW 1/4

SHEET 9 of 11



Uintah Engineering & Land Surveying
 85 South 200 East Vernal, Utah 84078
 (435) 789-1017 * FAX (435) 789-1813



TOPOGRAPHIC
MAP

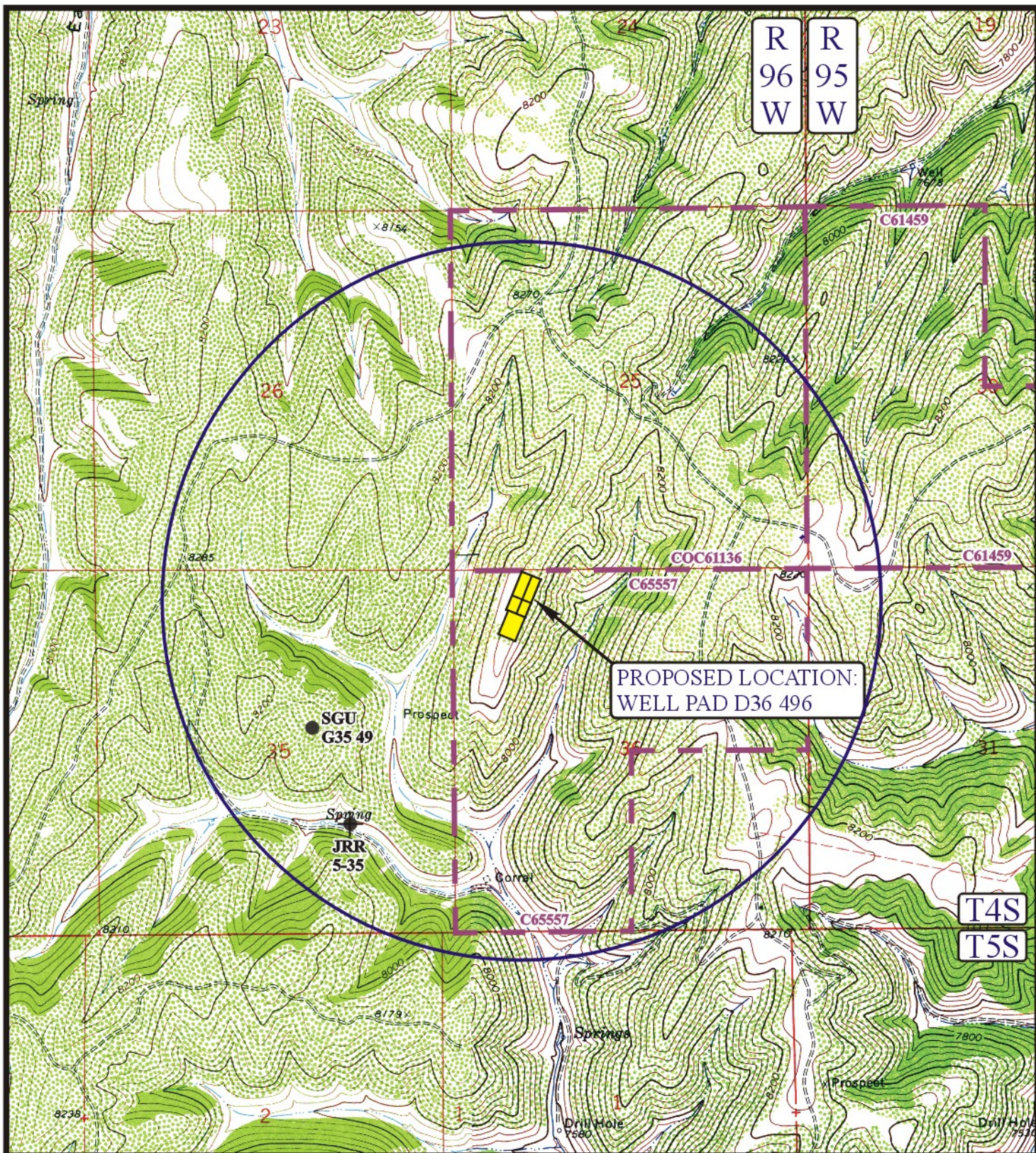
SCALE: 1" = 2000'

DRAWN BY: J.L.G.

8 **5** **09**
 MONTH DAY YEAR

REVISED: 06-24-11

B
 TOPO



LEGEND:

- | | |
|-------------------|-------------------------|
| ⊗ DISPOSAL WELLS | ⊗ WATER WELLS |
| ● PRODUCING WELLS | ● ABANDONED WELLS |
| ● SHUT IN WELLS | ● TEMPORARILY ABANDONED |



Encana OIL & GAS (USA) INC.

WELL PAD D36 496

SECTION 25, T4S, R96W, 6th P.M.

NW 1/4 NW 1/4

SHEET 10 of 11



Uintah Engineering & Land Surveying
85 South 200 East Vernal, Utah 84078
(435) 789-1017 * FAX (435) 789-1813

**TOPOGRAPHIC
MAP**

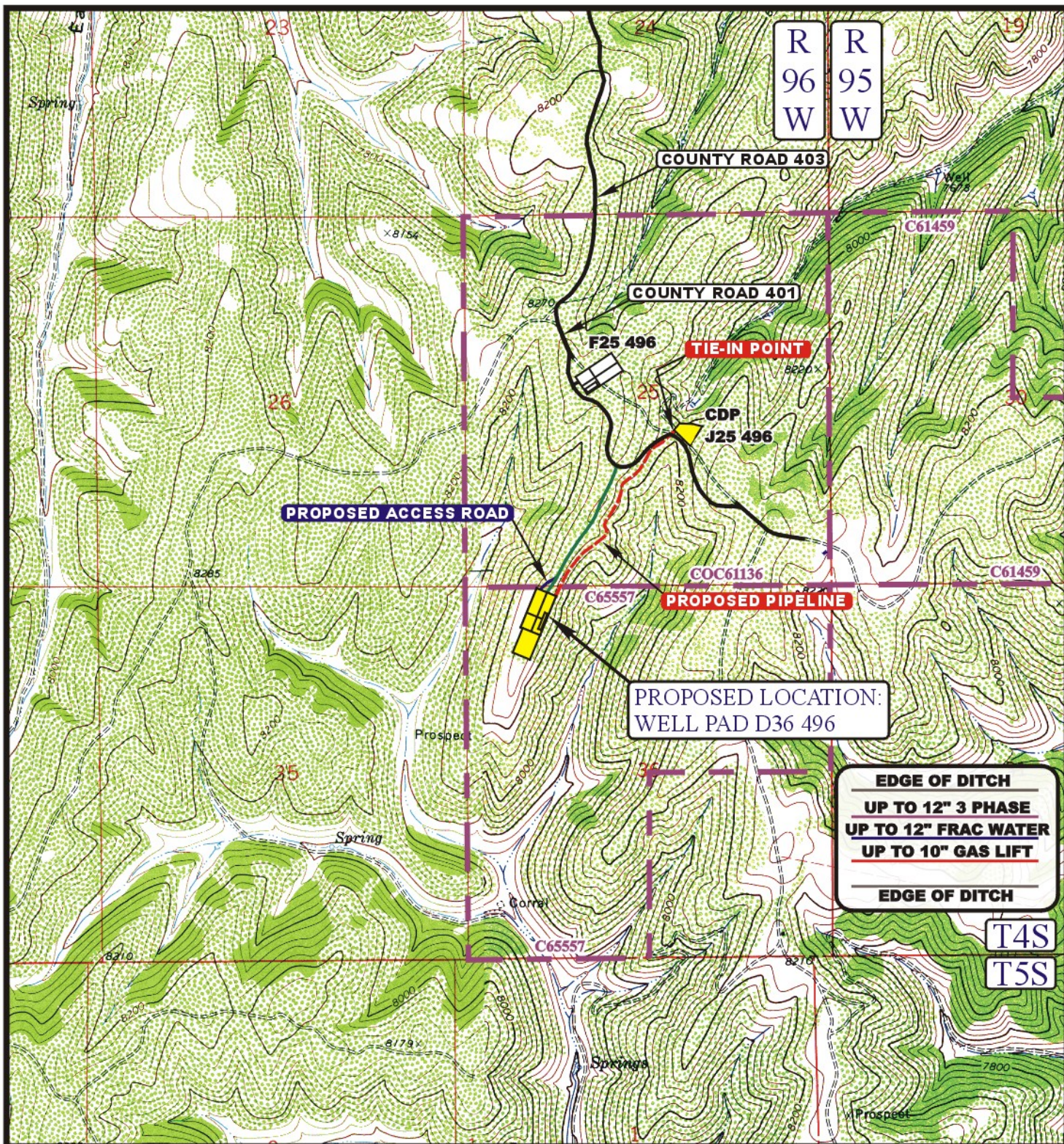
8 5 09
MONTH DAY YEAR

SCALE: 1" = 2000'

DRAWN BY: J.L.G.

REVISED: 04-21-11





APPROXIMATE TOTAL PIPELINE DISTANCE = 3,073' +/-

LEGEND:

- EXISTING PIPELINE
- - - - - PROPOSED PIPELINE
- PROPOSED ACCESS



Encana OIL & GAS (USA) INC.

WELL PAD D36 496

SECTION 25, T4S, R96W, 6th P.M.

NW 1/4 NW 1/4 SHEET 11 of 12



Uintah Engineering & Land Surveying
85 South 200 East Vernal, Utah 84078
(435) 789-1017 * FAX (435) 789-1813

**TOPOGRAPHIC
MAP**

8 10 09
MONTH DAY YEAR

SCALE: 1" = 2000' DRAWN BY: J.L.G. REVISED: 8-5-10

D
TOPO

Encana OIL & GAS (USA) INC.
WELL PAD D36 496
SECTION 36, T4S, R96W, 6th P.M.

PROCEED IN A NORTHWESTERLY DIRECTION FROM PARACHUTE, COLORADO ALONG COUNTY ROAD 215 APPROXIMATELY 10.8 MILES TO THE JUNCTION OF THIS ROAD AND AN EXISTING ROAD TO THE NORTHWEST; TURN LEFT AND PROCEED IN A NORTHWESTERLY DIRECTION APPROXIMATELY 10.0 MILES TO THE JUNCTION OF THIS ROAD AND AN EXISTING ROAD SOUTHEAST; TURN RIGHT AND PROCEED IN A SOUTHEASTERLY DIRECTION APPROXIMATELY 1114' TO THE BEGINNING OF THE ACCESS ROAD FOR THE F25 496; CONTINUE ON IN A SOUTHEASTERLY DIRECTION APPROXIMATELY 1480' TO THE JUNCTION OF THIS ROAD AND AN EXISTING ROAD TO THE SOUTHWEST; TURN RIGHT AND PROCEED IN A SOUTHWESTERLY DIRECTION APPROXIMATELY 2155' TO THE PROPOSED LOCATION.

TOTAL DISTANCE FROM PARACHUTE, COLORADO TO THE PROPOSED WELL LOCATION IS APPROXIMATELY 21.7 MILES.