

T4S, R96W, 6th P.M.

Encana OIL & GAS (USA) INC.

Well location, SG 8512G-25 D36 496 (SURFACE LOCATION), located as shown in Lot 4 of Section 36, T4S, R96W, 6th P.M., Garfield County, Colorado.

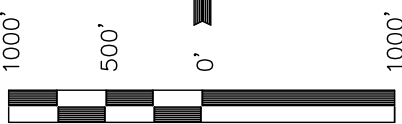
### BASIS OF ELEVATION

BENCH MARK (H79) LOCATED IN THE NE 1/4 OF SECTION 35, T4S, R98W, 6th P.M. TAKEN FROM THE BULL FORK QUADRANGLE, COLORADO, 7.5 MINUTE SERIES (TOPOGRAPHICAL MAP) PUBLISHED BY THE UNITED STATES DEPARTMENT OF THE INTERIOR, GEOLOGICAL SURVEY. SAID ELEVATION IS MARKED AS BEING 8535 FEET.

### BASIS OF BEARINGS

BASIS OF BEARINGS IS A G.P.S. OBSERVATION.

Sheet 1cc of 11



SCALE

### CERTIFICATE

THIS IS TO CERTIFY THAT THE ABOVE PLAT WAS PREPARED FROM FIELD NOTES OF ACTUAL SURVEYS MADE BY ME OR UNDER MY SUPERVISION AND THAT THE SAME ARE TRUE AND CORRECT TO THE BEST OF MY KNOWLEDGE AND BELIEF.

REGISTERED LAND SURVEYOR  
REGISTRATION NO. 17492  
STATE OF COLORADO

Revised: 05-18-11 D.R.B.

**UINTAH ENGINEERING & LAND SURVEYING**  
85 SOUTH 200 EAST - VERNAL, UTAH 84078  
(435) 789-1017

SCALE 1" = 1000'	DATE SURVEYED: 08-01-09	DATE DRAWN: 07-26-10
PARTY D.K. B.H. D.R.B.	REFERENCES G.L.O. PLAT	
WEATHER COOL	FILE Encana OIL & GAS (USA) INC.	

1953 Brass Cap  
0.8' High, Mound  
of Stones  
Lat: 39.666042°  
Long: 108.126567°

1953 Brass Cap  
0.6' High, Steel  
Post  
Lat: 39.666053°  
Long: 108.117142°

1953 Brass Cap  
0.4' High  
Lat: 39.666064°  
Long: 108.107683°

S89°46'52"W - 2653.74' (Meas.)

S89°44'26"W - 2664.30' (Meas.)

COC065557

**SG 8512G-25 D36 496**  
Elev. Ungraded Ground = 8302.0'  
Elev. Graded Ground = 8290.6'

Lot 4

Lot 3

Lot 2

Lot 1

COC061138  
1953 Brass Cap  
0.5' High, "T"  
Post  
Lat: 39.658806°  
Long: 108.126564°

1953 Brass Cap 0.3'  
High, Mound of Stones  
Lat: 39.658633°  
Long: 108.126569°

36

NOTE:  
THE PROPOSED BOTTOM HOLE FOR THIS WELL  
IS LOCATED IN THE NW 1/4 SW 1/4 OF SECTION  
25, T4S, R96W, 6th P.M. AT A DISTANCE OF  
1366' FSL 677' FWL. IT BEARS N12°57'21"W  
1746.33' FROM THE PROPOSED WELL HEAD.

COC061138

1953 Brass Cap  
0.4' High, "T" Post  
Lat: 39.658806°  
Long: 108.107661°

Lot 5

Lot 6

COC065557

1953 Brass Cap  
0.8' High, N-E-W  
Fenceline, 3" PVC  
Post  
Lat: 39.651453°  
Long: 108.126700°

1953 Brass Cap  
1.1' High, E-W  
Fenceline, Steel  
Post  
Lat: 39.651533°  
Long: 108.117317°

1953 Brass Cap  
0.5' High, E-W  
Fenceline  
Post  
Lat: 39.651553°  
Long: 108.107675°

T4S  
T5S

S89°13'57"W - 2643.54' (Meas.)

S89°40'37"W - 2715.77' (Meas.)

### LEGEND:

└─┘ = 90° SYMBOL

● = PROPOSED WELL HEAD.

▲ = SECTION CORNERS LOCATED.

SEE SHEET 7A FOR EXISTING  
IMPROVEMENT WITHIN 400' OF THE  
PROPOSED WELL DISTURBANCE

LINE TABLE		
LINE	BEARING	LENGTH
L1	S00°52'27"W	62.59'

PDOP = 1.5

<b>NAD 83 (SURFACE LOCATION)</b>	
LATITUDE = 39°39'54.44" (39.665122)	LONGITUDE = 108°07'21.99" (108.122775)
<b>NAD 27 (SURFACE LOCATION)</b>	
LATITUDE = 39°39'54.52" (39.665144)	LONGITUDE = 108°07'19.71" (108.122142)

T4S, R96W, 6th P.M.

# Encana OIL & GAS (USA) INC.

Well location, SG 8512G-25 D36 496 (TARGET BOTTOM HOLE), located as shown in the SW 1/4 SW 1/4 of Section 25, T4S, R96W, 6th P.M., Garfield County, Colorado.

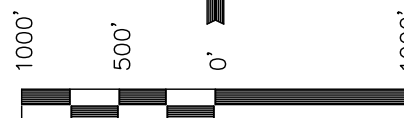
## BASIS OF ELEVATION

BENCH MARK (H79) LOCATED IN THE NE 1/4 OF SECTION 35, T4S, R98W, 6th P.M. TAKEN FROM THE BULL FORK QUADRANGLE, COLORADO, 7.5 MINUTE SERIES (TOPO GRAPHICAL MAP) PUBLISHED BY THE UNITED STATES DEPARTMENT OF THE INTERIOR, GEOLOGICAL SURVEY. SAID ELEVATION IS MARKED AS BEING 8535 FEET.

## BASIS OF BEARINGS

BASIS OF BEARINGS IS A G.P.S. OBSERVATION.

Sheet 1dd of 11



SCALE

## CERTIFICATE

THIS IS TO CERTIFY THAT THE ABOVE PLAT WAS PREPARED FROM FIELD NOTES OF ACTUAL SURVEYS MADE BY ME OR UNDER MY SUPERVISION AND THAT THE SAME ARE TRUE AND CORRECT TO THE BEST OF MY KNOWLEDGE AND BELIEF.

REGISTERED LAND SURVEYOR  
REGISTRATION NO. 17492  
STATE OF COLORADO

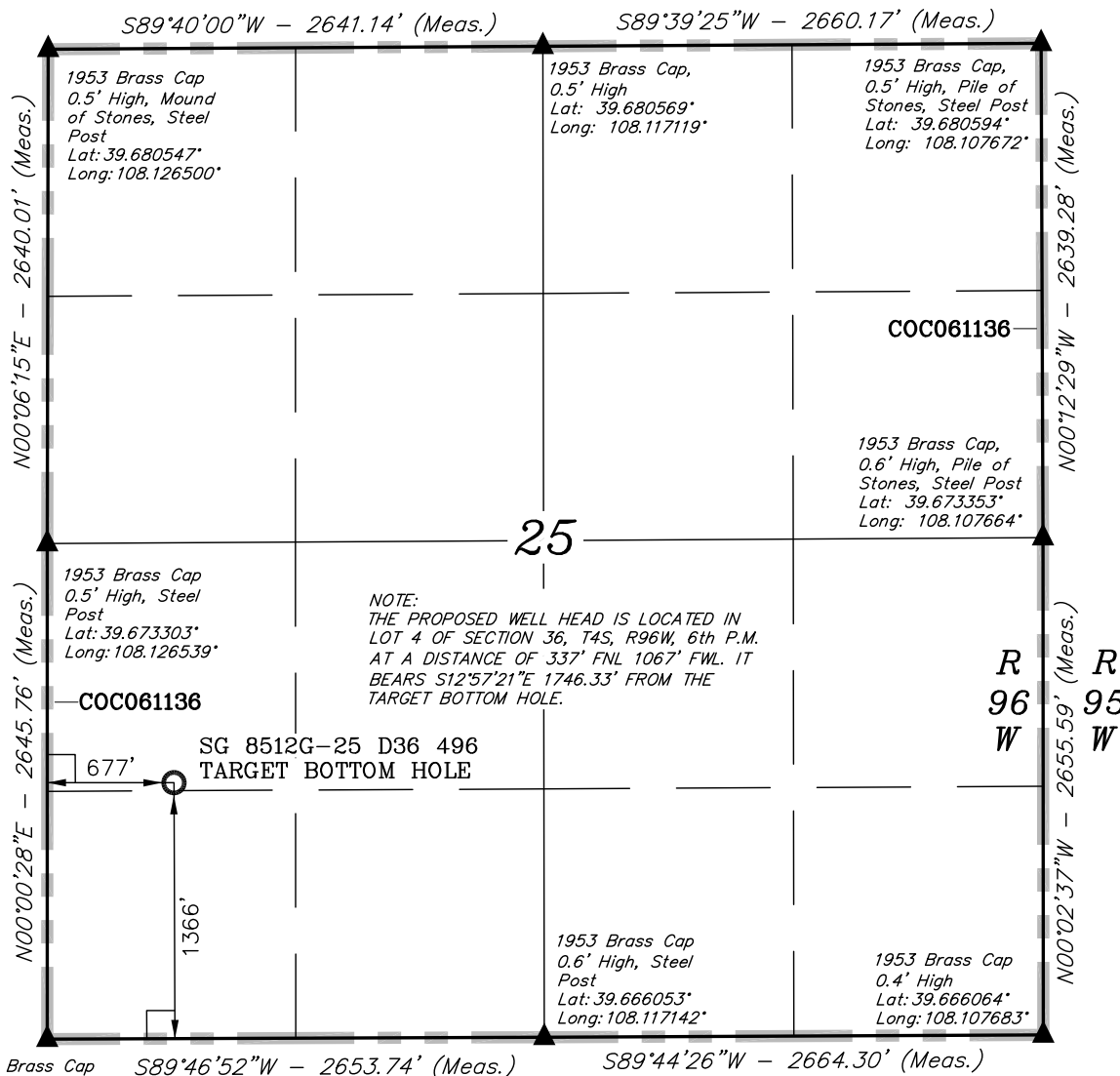
Revised: 05-18-11 D.R.B.

## UINTAH ENGINEERING & LAND SURVEYING

85 SOUTH 200 EAST - VERNAL, UTAH 84078

(435) 789-1017

SCALE 1" = 1000'	DATE SURVEYED: 08-01-09	DATE DRAWN: 07-26-10
PARTY D.K. B.H. D.R.B.	REFERENCES G.L.O. PLAT	
WEATHER COOL	FILE Encana OIL & GAS (USA) INC.	



## LEGEND:

└─┘ = 90° SYMBOL

● = PROPOSED WELL HEAD.

▲ = SECTION CORNERS LOCATED.

NAD 83 (TARGET BOTTOM HOLE)
LATITUDE = 39°40'11.26" (39.669794)
LONGITUDE = 108°07'26.94" (108.124150)
NAD 27 (TARGET BOTTOM HOLE)
LATITUDE = 39°40'11.35" (39.669819)
LONGITUDE = 108°07'24.65" (108.123514)