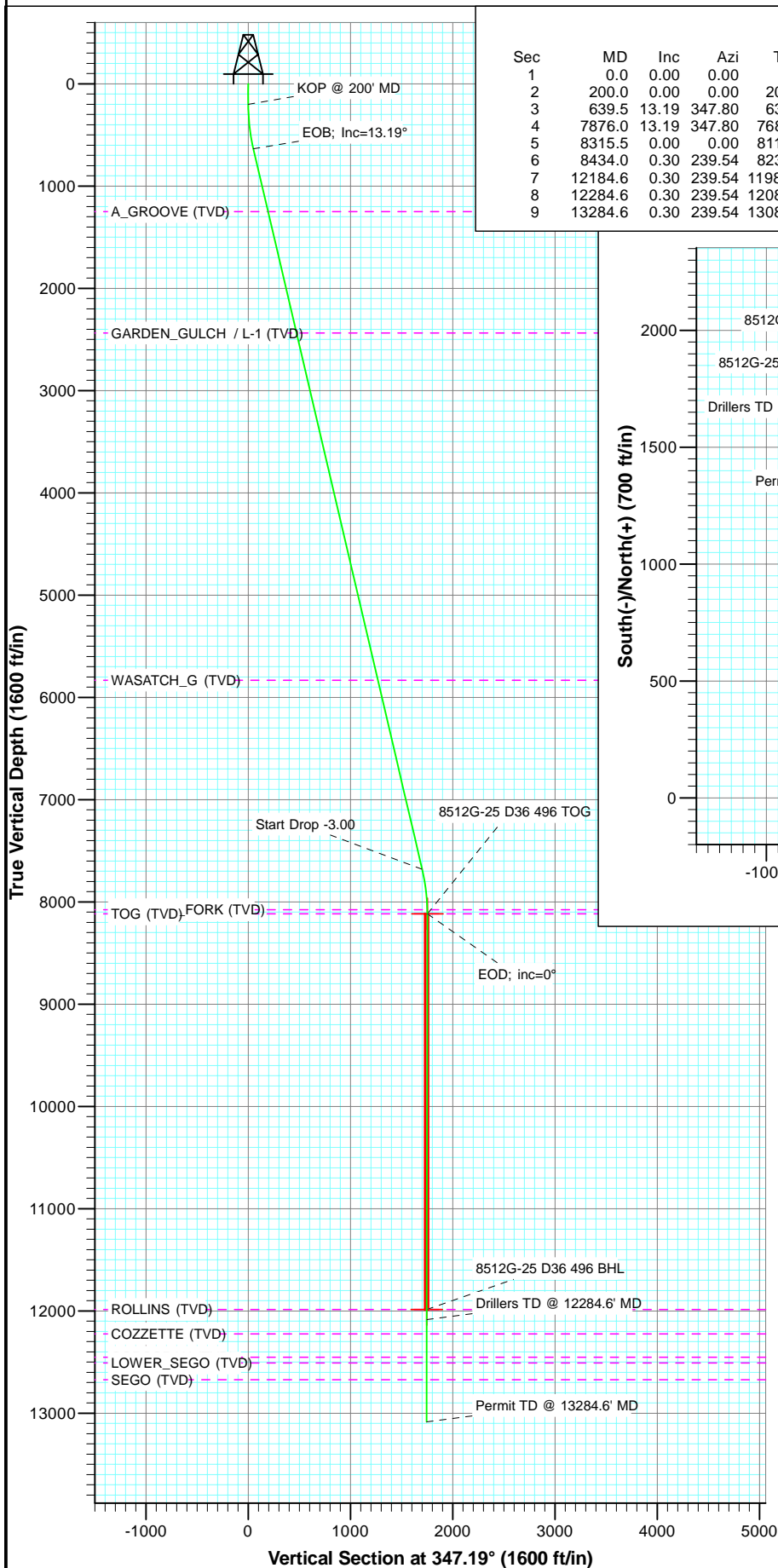
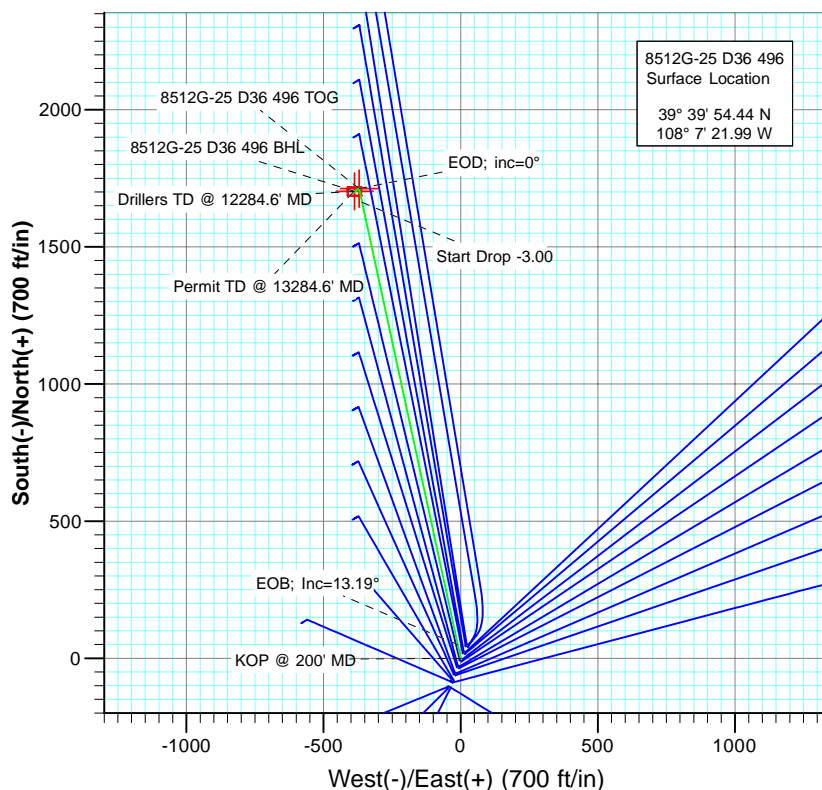




Project: Story Gulch  
Site: S36-T4S-R96W (D36 496)  
Well: 8512G-25 D36 496  
Wellbore: DD  
Plan: Plan #1



SECTION DETAILS											
Sec	MD	Inc	Azi	TVD	+N/-S	+E/-W	Dleg	TFace	VSec	Target	
1	0.0	0.00	0.00	0.0	0.0	0.0	0.00	0.00	0.0		
2	200.0	0.00	0.00	200.0	0.0	0.0	0.00	0.00	0.0		
3	639.5	13.19	347.80	635.7	49.2	-10.6	3.00	347.80	50.4		
4	7876.0	13.19	347.80	7681.3	1662.7	-359.5	0.00	0.00	1701.0		
5	8315.5	0.00	0.00	8117.0	1711.9	-370.1	3.00	180.00	1751.4	8512G-25 D36 496 TOG	
6	8434.0	0.30	239.54	8235.4	1711.7	-370.4	0.25	239.54	1751.3		
7	12184.6	0.30	239.54	11986.0	1701.9	-387.1	0.00	0.00	1745.4	8512G-25 D36 496 BHL	
8	12284.6	0.30	239.54	12086.0	1701.7	-387.5	0.00	0.00	1745.2		
9	13284.6	0.30	239.54	13086.0	1699.0	-392.0	0.00	0.00	1743.7		



#### FORMATION TOP DETAILS

TVDPath	MDPath	Formation
1251.0	1271.5	A_GROOVE (TVD)
2438.0	2490.7	GARDEN_GULCH / L-1 (TVD)
5833.0	5977.6	WASATCH_G (TVD)
8077.0	8275.5	WILLIAMS_FORK (TVD)
8117.0	8315.5	TOG (TVD)
11986.0	12184.6	ROLLINS (TVD)
12225.0	12423.6	COZZETTE (TVD)
12453.0	12651.6	CORCORAN (TVD)
12509.0	12707.6	LOWER_SEGO (TVD)
12672.0	12870.6	SEGO (TVD)



Azimuths to True North  
Magnetic North: 10.44°  
Magnetic Field  
Strength: 52310.9nT  
Dip Angle: 65.86°  
Date: 5/31/2011  
Model: IGRF2010

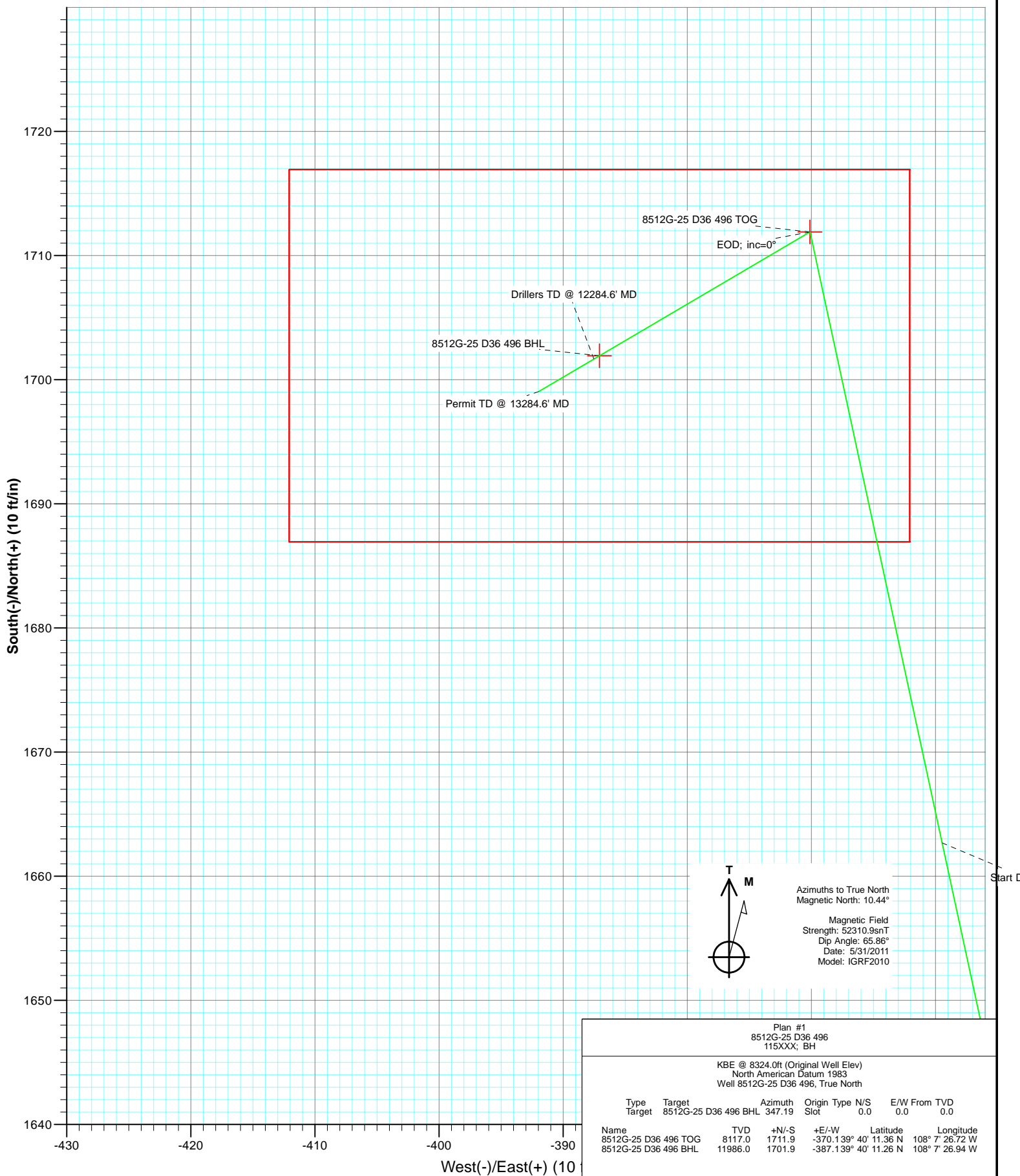
Plan #1  
8512G-25 D36 496  
115XXX; BH

KBE @ 8324.0ft (Original Well Elev)  
North American Datum 1983  
Well 8512G-25 D36 496, True North

Type	Target	Target	Azimuth	Origin	Type	N/S	E/W	From	TVD
	Target	8512G-25 D36 496 BHL	347.19	Slot		0.0	0.0		0.0
Name	TVD	+N/-S	Latitude	Longitude					
8512G-25 D36 496 TOG	8117.0	1711.9	-370.139° 40' 11.36 N	108° 7' 26.72 W					
8512G-25 D36 496 BHL	11986.0	1701.9	-387.139° 40' 11.26 N	108° 7' 26.94 W					



Project: Story Gulch  
Site: S36-T4S-R96W (D36 496)  
Well: 8512G-25 D36 496  
Wellbore: DD  
Plan: Plan #1



Plan #1 8512G-25 D36 496 115XXX; BH							
KBE @ 8324.0ft (Original Well Elev) North American Datum 1983 Well 8512G-25 D36 496, True North							
Type	Target	Target	8512G-25 D36 496 BHL	Azimuth	Origin	Type	N/S
				347.19	Slot		0.0
						E/W	From
							TVD
							0.0
Name		TVD		+N/-S		Latitude	Longitude
8512G-25 D36 496 TOG	8117.0	1711.9		-370.139° 40'	11.36 N	108° 7' 26.72 W	
8512G-25 D36 496 BHL	11986.0	1701.9		-387.139° 40'	11.26 N	108° 7' 26.94 W	

# Cathedral Energy Services

## Planning Report

<b>Database:</b>	EDM 5000.1 US Multi Users DB	<b>Local Co-ordinate Reference:</b>	Well 8512G-25 D36 496
<b>Company:</b>	EnCana Oil & Gas (USA) Inc	<b>TVD Reference:</b>	KBE @ 8324.0ft (Original Well Elev)
<b>Project:</b>	Story Gulch	<b>MD Reference:</b>	KBE @ 8324.0ft (Original Well Elev)
<b>Site:</b>	S36-T4S-R96W (D36 496)	<b>North Reference:</b>	True
<b>Well:</b>	8512G-25 D36 496	<b>Survey Calculation Method:</b>	Minimum Curvature
<b>Wellbore:</b>	DD		
<b>Design:</b>	Plan #1		

<b>Project</b>	Story Gulch		
<b>Map System:</b>	US State Plane 1983	<b>System Datum:</b>	Mean Sea Level
<b>Geo Datum:</b>	North American Datum 1983		
<b>Map Zone:</b>	Colorado Central Zone		

Site		S36-T4S-R96W (D36 496)			
Site Position:		Northing:	1,677,676.10 ft	Latitude:	39° 39' 53.09 N
From:	Lat/Long	Easting:	2,261,675.01 ft	Longitude:	108° 7' 22.74 W
Position Uncertainty:	0.0 ft	Slot Radius:	13.200 in	Grid Convergence:	-1.65 °

Well	8512G-25 D36 496					
Well Position	+N/-S	0.0 ft	Northing:	1,677,810.62 ft	Latitude:	39° 39' 54.44 N
	+E/-W	0.0 ft	Easting:	2,261,737.25 ft	Longitude:	108° 7' 21.99 W
Position Uncertainty		0.0 ft	Wellhead Elevation:	ft	Ground Level:	8,302.0 ft

<b>Wellbore</b>	DD				
<b>Magnetics</b>	<b>Model Name</b>	<b>Sample Date</b>	<b>Declination (°)</b>	<b>Dip Angle (°)</b>	<b>Field Strength (nT)</b>
	IGRF2010	5/31/2011	10.44	65.86	52,311

<b>Design</b>	Plan #1			
<b>Audit Notes:</b>				
<b>Version:</b>	<b>Phase:</b>	PLAN	<b>Tie On Depth:</b>	0.0
<b>Vertical Section:</b>	<b>Depth From (TVD) (ft)</b>	<b>+N/-S (ft)</b>	<b>+E/-W (ft)</b>	<b>Direction (°)</b>
	0.0	0.0	0.0	347.19

<b>Plan Sections</b>										
Measured Depth (ft)	Inclination (°)	Azimuth (°)	Vertical Depth (ft)	+N/-S (ft)	+E/-W (ft)	Dogleg Rate (°/100ft)	Build Rate (°/100ft)	Turn Rate (°/100ft)	TFO (°)	Target
0.0	0.00	0.00	0.0	0.0	0.0	0.00	0.00	0.00	0.00	
200.0	0.00	0.00	200.0	0.0	0.0	0.00	0.00	0.00	0.00	
639.5	13.19	347.80	635.7	49.2	-10.6	3.00	3.00	0.00	347.80	
7,876.0	13.19	347.80	7,681.3	1,662.7	-359.5	0.00	0.00	0.00	0.00	
8,315.5	0.00	0.00	8,117.0	1,711.9	-370.1	3.00	-3.00	0.00	180.00	8512G-25 D36 496 T
8,434.0	0.30	239.54	8,235.4	1,711.7	-370.4	0.25	0.25	-101.72	239.54	
12,184.6	0.30	239.54	11,986.0	1,701.9	-387.1	0.00	0.00	0.00	0.00	8512G-25 D36 496 BI
12,284.6	0.30	239.54	12,086.0	1,701.7	-387.5	0.00	0.00	0.00	0.00	
13,284.6	0.30	239.54	13,086.0	1,699.0	-392.0	0.00	0.00	0.00	0.00	

# Cathedral Energy Services

## Planning Report

<b>Database:</b>	EDM 5000.1 US Multi Users DB	<b>Local Co-ordinate Reference:</b>	Well 8512G-25 D36 496
<b>Company:</b>	EnCana Oil & Gas (USA) Inc	<b>TVD Reference:</b>	KBE @ 8324.0ft (Original Well Elev)
<b>Project:</b>	Story Gulch	<b>MD Reference:</b>	KBE @ 8324.0ft (Original Well Elev)
<b>Site:</b>	S36-T4S-R96W (D36 496)	<b>North Reference:</b>	True
<b>Well:</b>	8512G-25 D36 496	<b>Survey Calculation Method:</b>	Minimum Curvature
<b>Wellbore:</b>	DD		
<b>Design:</b>	Plan #1		

### Planned Survey

Measured Depth (ft)	Inclination (°)	Azimuth (°)	Vertical Depth (ft)	+N/-S (ft)	+E/-W (ft)	Vertical Section (ft)	Dogleg Rate (°/100ft)	Build Rate (°/100ft)	Comments / Formations
0.0	0.00	0.00	0.0	0.0	0.0	0.0	0.00	0.00	
100.0	0.00	0.00	100.0	0.0	0.0	0.0	0.00	0.00	
200.0	0.00	0.00	200.0	0.0	0.0	0.0	0.00	0.00	KOP @ 200' MD
300.0	3.00	347.80	300.0	2.6	-0.6	2.6	3.00	3.00	
400.0	6.00	347.80	399.6	10.2	-2.2	10.5	3.00	3.00	
500.0	9.00	347.80	498.8	23.0	-5.0	23.5	3.00	3.00	
600.0	12.00	347.80	597.1	40.8	-8.8	41.7	3.00	3.00	
639.5	13.19	347.80	635.7	49.2	-10.6	50.4	3.00	3.00	EOB; Inc=13.19°
700.0	13.19	347.80	694.5	62.7	-13.6	64.1	0.00	0.00	
800.0	13.19	347.80	791.9	85.0	-18.4	87.0	0.00	0.00	
900.0	13.19	347.80	889.3	107.3	-23.2	109.8	0.00	0.00	
1,000.0	13.19	347.80	986.6	129.6	-28.0	132.6	0.00	0.00	
1,100.0	13.19	347.80	1,084.0	151.9	-32.8	155.4	0.00	0.00	
1,200.0	13.19	347.80	1,181.4	174.2	-37.7	178.2	0.00	0.00	
1,271.5	13.19	347.80	1,251.0	190.1	-41.1	194.5	0.00	0.00	A_GROOVE (TVD)
1,300.0	13.19	347.80	1,278.7	196.5	-42.5	201.0	0.00	0.00	
1,400.0	13.19	347.80	1,376.1	218.8	-47.3	223.8	0.00	0.00	
1,500.0	13.19	347.80	1,473.4	241.1	-52.1	246.6	0.00	0.00	
1,600.0	13.19	347.80	1,570.8	263.4	-56.9	269.4	0.00	0.00	
1,700.0	13.19	347.80	1,668.2	285.7	-61.8	292.2	0.00	0.00	
1,800.0	13.19	347.80	1,765.5	308.0	-66.6	315.1	0.00	0.00	
1,900.0	13.19	347.80	1,862.9	330.3	-71.4	337.9	0.00	0.00	
2,000.0	13.19	347.80	1,960.3	352.6	-76.2	360.7	0.00	0.00	
2,100.0	13.19	347.80	2,057.6	374.8	-81.0	383.5	0.00	0.00	
2,200.0	13.19	347.80	2,155.0	397.1	-85.9	406.3	0.00	0.00	
2,300.0	13.19	347.80	2,252.4	419.4	-90.7	429.1	0.00	0.00	
2,400.0	13.19	347.80	2,349.7	441.7	-95.5	451.9	0.00	0.00	
2,490.7	13.19	347.80	2,438.0	462.0	-99.9	472.6	0.00	0.00	GARDEN_GULCH / L-1 (TVD)
2,500.0	13.19	347.80	2,447.1	464.0	-100.3	474.7	0.00	0.00	
2,600.0	13.19	347.80	2,544.4	486.3	-105.1	497.5	0.00	0.00	
2,700.0	13.19	347.80	2,641.8	508.6	-110.0	520.3	0.00	0.00	
2,800.0	13.19	347.80	2,739.2	530.9	-114.8	543.2	0.00	0.00	
2,900.0	13.19	347.80	2,836.5	553.2	-119.6	566.0	0.00	0.00	
3,000.0	13.19	347.80	2,933.9	575.5	-124.4	588.8	0.00	0.00	
3,100.0	13.19	347.80	3,031.3	597.8	-129.2	611.6	0.00	0.00	
3,200.0	13.19	347.80	3,128.6	620.1	-134.1	634.4	0.00	0.00	
3,300.0	13.19	347.80	3,226.0	642.4	-138.9	657.2	0.00	0.00	
3,400.0	13.19	347.80	3,323.3	664.7	-143.7	680.0	0.00	0.00	
3,500.0	13.19	347.80	3,420.7	687.0	-148.5	702.8	0.00	0.00	
3,600.0	13.19	347.80	3,518.1	709.3	-153.3	725.6	0.00	0.00	
3,700.0	13.19	347.80	3,615.4	731.6	-158.2	748.4	0.00	0.00	
3,800.0	13.19	347.80	3,712.8	753.9	-163.0	771.3	0.00	0.00	
3,900.0	13.19	347.80	3,810.2	776.2	-167.8	794.1	0.00	0.00	
4,000.0	13.19	347.80	3,907.5	798.5	-172.6	816.9	0.00	0.00	
4,100.0	13.19	347.80	4,004.9	820.8	-177.4	839.7	0.00	0.00	
4,200.0	13.19	347.80	4,102.3	843.1	-182.3	862.5	0.00	0.00	
4,300.0	13.19	347.80	4,199.6	865.4	-187.1	885.3	0.00	0.00	
4,400.0	13.19	347.80	4,297.0	887.7	-191.9	908.1	0.00	0.00	
4,500.0	13.19	347.80	4,394.3	910.0	-196.7	930.9	0.00	0.00	
4,600.0	13.19	347.80	4,491.7	932.3	-201.5	953.7	0.00	0.00	
4,700.0	13.19	347.80	4,589.1	954.6	-206.4	976.6	0.00	0.00	
4,800.0	13.19	347.80	4,686.4	976.9	-211.2	999.4	0.00	0.00	

# Cathedral Energy Services

## Planning Report

<b>Database:</b>	EDM 5000.1 US Multi Users DB	<b>Local Co-ordinate Reference:</b>	Well 8512G-25 D36 496
<b>Company:</b>	EnCana Oil & Gas (USA) Inc	<b>TVD Reference:</b>	KBE @ 8324.0ft (Original Well Elev)
<b>Project:</b>	Story Gulch	<b>MD Reference:</b>	KBE @ 8324.0ft (Original Well Elev)
<b>Site:</b>	S36-T4S-R96W (D36 496)	<b>North Reference:</b>	True
<b>Well:</b>	8512G-25 D36 496	<b>Survey Calculation Method:</b>	Minimum Curvature
<b>Wellbore:</b>	DD		
<b>Design:</b>	Plan #1		

### Planned Survey

Measured Depth (ft)	Inclination (°)	Azimuth (°)	Vertical Depth (ft)	+N/-S (ft)	+E/-W (ft)	Vertical Section (ft)	Dogleg Rate (°/100ft)	Build Rate (°/100ft)	Comments / Formations
4,900.0	13.19	347.80	4,783.8	999.1	-216.0	1,022.2	0.00	0.00	
5,000.0	13.19	347.80	4,881.2	1,021.4	-220.8	1,045.0	0.00	0.00	
5,100.0	13.19	347.80	4,978.5	1,043.7	-225.6	1,067.8	0.00	0.00	
5,200.0	13.19	347.80	5,075.9	1,066.0	-230.5	1,090.6	0.00	0.00	
5,300.0	13.19	347.80	5,173.3	1,088.3	-235.3	1,113.4	0.00	0.00	
5,400.0	13.19	347.80	5,270.6	1,110.6	-240.1	1,136.2	0.00	0.00	
5,500.0	13.19	347.80	5,368.0	1,132.9	-244.9	1,159.0	0.00	0.00	
5,600.0	13.19	347.80	5,465.3	1,155.2	-249.7	1,181.8	0.00	0.00	
5,700.0	13.19	347.80	5,562.7	1,177.5	-254.6	1,204.7	0.00	0.00	
5,800.0	13.19	347.80	5,660.1	1,199.8	-259.4	1,227.5	0.00	0.00	
5,900.0	13.19	347.80	5,757.4	1,222.1	-264.2	1,250.3	0.00	0.00	
5,977.6	13.19	347.80	5,833.0	1,239.4	-268.0	1,268.0	0.00	0.00	WASATCH_G (TVD)
6,000.0	13.19	347.80	5,854.8	1,244.4	-269.0	1,273.1	0.00	0.00	
6,100.0	13.19	347.80	5,952.2	1,266.7	-273.9	1,295.9	0.00	0.00	
6,200.0	13.19	347.80	6,049.5	1,289.0	-278.7	1,318.7	0.00	0.00	
6,300.0	13.19	347.80	6,146.9	1,311.3	-283.5	1,341.5	0.00	0.00	
6,400.0	13.19	347.80	6,244.3	1,333.6	-288.3	1,364.3	0.00	0.00	
6,500.0	13.19	347.80	6,341.6	1,355.9	-293.1	1,387.1	0.00	0.00	
6,600.0	13.19	347.80	6,439.0	1,378.2	-298.0	1,409.9	0.00	0.00	
6,700.0	13.19	347.80	6,536.3	1,400.5	-302.8	1,432.8	0.00	0.00	
6,800.0	13.19	347.80	6,633.7	1,422.8	-307.6	1,455.6	0.00	0.00	
6,900.0	13.19	347.80	6,731.1	1,445.1	-312.4	1,478.4	0.00	0.00	
7,000.0	13.19	347.80	6,828.4	1,467.4	-317.2	1,501.2	0.00	0.00	
7,100.0	13.19	347.80	6,925.8	1,489.7	-322.1	1,524.0	0.00	0.00	
7,200.0	13.19	347.80	7,023.2	1,512.0	-326.9	1,546.8	0.00	0.00	
7,300.0	13.19	347.80	7,120.5	1,534.3	-331.7	1,569.6	0.00	0.00	
7,400.0	13.19	347.80	7,217.9	1,556.6	-336.5	1,592.4	0.00	0.00	
7,500.0	13.19	347.80	7,315.2	1,578.9	-341.3	1,615.2	0.00	0.00	
7,600.0	13.19	347.80	7,412.6	1,601.1	-346.2	1,638.0	0.00	0.00	
7,700.0	13.19	347.80	7,510.0	1,623.4	-351.0	1,660.9	0.00	0.00	
7,800.0	13.19	347.80	7,607.3	1,645.7	-355.8	1,683.7	0.00	0.00	
7,876.0	13.19	347.80	7,681.3	1,662.7	-359.5	1,701.0	0.00	0.00	Start Drop -3.00
7,900.0	12.47	347.80	7,704.7	1,667.9	-360.6	1,706.3	3.00	-3.00	
8,000.0	9.47	347.80	7,802.9	1,686.5	-364.6	1,725.3	3.00	-3.00	
8,100.0	6.47	347.80	7,901.9	1,700.0	-367.5	1,739.2	3.00	-3.00	
8,200.0	3.47	347.80	8,001.5	1,708.5	-369.4	1,747.9	3.00	-3.00	
8,275.5	1.20	347.80	8,077.0	1,711.5	-370.0	1,750.9	3.00	-3.00	WILLIAMS_FORK (TVD)
8,300.0	0.47	347.80	8,101.5	1,711.8	-370.1	1,751.3	3.00	-3.00	
8,315.5	0.00	0.00	8,117.0	1,711.9	-370.1	1,751.4	3.00	-3.00	EOD; inc=0° - TOG (TVD) - 8512G-25 D36 496
8,400.0	0.21	239.54	8,201.5	1,711.8	-370.2	1,751.3	0.25	0.25	
8,434.0	0.30	239.54	8,235.4	1,711.7	-370.4	1,751.3	0.25	0.25	
8,500.0	0.30	239.54	8,301.5	1,711.6	-370.7	1,751.2	0.00	0.00	
8,600.0	0.30	239.54	8,401.5	1,711.3	-371.1	1,751.0	0.00	0.00	
8,700.0	0.30	239.54	8,501.5	1,711.1	-371.5	1,750.8	0.00	0.00	
8,800.0	0.30	239.54	8,601.5	1,710.8	-372.0	1,750.7	0.00	0.00	
8,900.0	0.30	239.54	8,701.5	1,710.5	-372.4	1,750.5	0.00	0.00	
9,000.0	0.30	239.54	8,801.5	1,710.3	-372.9	1,750.4	0.00	0.00	
9,100.0	0.30	239.54	8,901.5	1,710.0	-373.3	1,750.2	0.00	0.00	
9,200.0	0.30	239.54	9,001.5	1,709.7	-373.8	1,750.1	0.00	0.00	
9,300.0	0.30	239.54	9,101.5	1,709.5	-374.2	1,749.9	0.00	0.00	
9,400.0	0.30	239.54	9,201.5	1,709.2	-374.7	1,749.7	0.00	0.00	
9,500.0	0.30	239.54	9,301.5	1,709.0	-375.1	1,749.6	0.00	0.00	

# Cathedral Energy Services

## Planning Report

<b>Database:</b>	EDM 5000.1 US Multi Users DB	<b>Local Co-ordinate Reference:</b>	Well 8512G-25 D36 496
<b>Company:</b>	EnCana Oil & Gas (USA) Inc	<b>TVD Reference:</b>	KBE @ 8324.0ft (Original Well Elev)
<b>Project:</b>	Story Gulch	<b>MD Reference:</b>	KBE @ 8324.0ft (Original Well Elev)
<b>Site:</b>	S36-T4S-R96W (D36 496)	<b>North Reference:</b>	True
<b>Well:</b>	8512G-25 D36 496	<b>Survey Calculation Method:</b>	Minimum Curvature
<b>Wellbore:</b>	DD		
<b>Design:</b>	Plan #1		

Planned Survey									
Measured Depth (ft)	Inclination (°)	Azimuth (°)	Vertical Depth (ft)	+N/-S (ft)	+E/-W (ft)	Vertical Section (ft)	Dogleg Rate (°/100ft)	Build Rate (°/100ft)	Comments / Formations
9,600.0	0.30	239.54	9,401.4	1,708.7	-375.6	1,749.4	0.00	0.00	
9,700.0	0.30	239.54	9,501.4	1,708.4	-376.0	1,749.3	0.00	0.00	
9,800.0	0.30	239.54	9,601.4	1,708.2	-376.4	1,749.1	0.00	0.00	
9,900.0	0.30	239.54	9,701.4	1,707.9	-376.9	1,749.0	0.00	0.00	
10,000.0	0.30	239.54	9,801.4	1,707.6	-377.3	1,748.8	0.00	0.00	
10,100.0	0.30	239.54	9,901.4	1,707.4	-377.8	1,748.7	0.00	0.00	
10,200.0	0.30	239.54	10,001.4	1,707.1	-378.2	1,748.5	0.00	0.00	
10,300.0	0.30	239.54	10,101.4	1,706.9	-378.7	1,748.3	0.00	0.00	
10,400.0	0.30	239.54	10,201.4	1,706.6	-379.1	1,748.2	0.00	0.00	
10,500.0	0.30	239.54	10,301.4	1,706.3	-379.6	1,748.0	0.00	0.00	
10,600.0	0.30	239.54	10,401.4	1,706.1	-380.0	1,747.9	0.00	0.00	
10,700.0	0.30	239.54	10,501.4	1,705.8	-380.5	1,747.7	0.00	0.00	
10,800.0	0.30	239.54	10,601.4	1,705.6	-380.9	1,747.6	0.00	0.00	
10,900.0	0.30	239.54	10,701.4	1,705.3	-381.3	1,747.4	0.00	0.00	
11,000.0	0.30	239.54	10,801.4	1,705.0	-381.8	1,747.2	0.00	0.00	
11,100.0	0.30	239.54	10,901.4	1,704.8	-382.2	1,747.1	0.00	0.00	
11,200.0	0.30	239.54	11,001.4	1,704.5	-382.7	1,746.9	0.00	0.00	
11,300.0	0.30	239.54	11,101.4	1,704.2	-383.1	1,746.8	0.00	0.00	
11,400.0	0.30	239.54	11,201.4	1,704.0	-383.6	1,746.6	0.00	0.00	
11,500.0	0.30	239.54	11,301.4	1,703.7	-384.0	1,746.5	0.00	0.00	
11,600.0	0.30	239.54	11,401.4	1,703.5	-384.5	1,746.3	0.00	0.00	
11,700.0	0.30	239.54	11,501.4	1,703.2	-384.9	1,746.1	0.00	0.00	
11,800.0	0.30	239.54	11,601.4	1,702.9	-385.4	1,746.0	0.00	0.00	
11,900.0	0.30	239.54	11,701.4	1,702.7	-385.8	1,745.8	0.00	0.00	
12,000.0	0.30	239.54	11,801.4	1,702.4	-386.2	1,745.7	0.00	0.00	
12,100.0	0.30	239.54	11,901.4	1,702.1	-386.7	1,745.5	0.00	0.00	
12,184.6	0.30	239.54	11,986.0	1,701.9	-387.1	1,745.4	0.00	0.00	ROLLINS (TVD) - 8512G-25 D36 496 BHL
12,200.0	0.30	239.54	12,001.4	1,701.9	-387.1	1,745.4	0.00	0.00	
12,284.6	0.30	239.54	12,086.0	1,701.7	-387.5	1,745.2	0.00	0.00	Drillers TD @ 12284.6' MD
12,300.0	0.30	239.54	12,101.4	1,701.6	-387.6	1,745.2	0.00	0.00	
12,400.0	0.30	239.54	12,201.4	1,701.4	-388.0	1,745.0	0.00	0.00	
12,423.6	0.30	239.54	12,225.0	1,701.3	-388.1	1,745.0	0.00	0.00	COZZETTE (TVD)
12,500.0	0.30	239.54	12,301.4	1,701.1	-388.5	1,744.9	0.00	0.00	
12,600.0	0.30	239.54	12,401.4	1,700.8	-388.9	1,744.7	0.00	0.00	
12,651.6	0.30	239.54	12,453.0	1,700.7	-389.1	1,744.7	0.00	0.00	CORCORAN (TVD)
12,700.0	0.30	239.54	12,501.4	1,700.6	-389.4	1,744.6	0.00	0.00	
12,707.6	0.30	239.54	12,509.0	1,700.6	-389.4	1,744.6	0.00	0.00	LOWER_SEGO (TVD)
12,800.0	0.30	239.54	12,601.4	1,700.3	-389.8	1,744.4	0.00	0.00	
12,870.6	0.30	239.54	12,672.0	1,700.1	-390.1	1,744.3	0.00	0.00	SEGO (TVD)
12,900.0	0.30	239.54	12,701.4	1,700.1	-390.3	1,744.3	0.00	0.00	
13,000.0	0.30	239.54	12,801.4	1,699.8	-390.7	1,744.1	0.00	0.00	
13,100.0	0.30	239.54	12,901.4	1,699.5	-391.1	1,744.0	0.00	0.00	
13,200.0	0.30	239.54	13,001.4	1,699.3	-391.6	1,743.8	0.00	0.00	
13,284.6	0.30	239.54	13,086.0	1,699.0	-392.0	1,743.7	0.00	0.00	

# Cathedral Energy Services

## Planning Report

<b>Database:</b>	EDM 5000.1 US Multi Users DB	<b>Local Co-ordinate Reference:</b>	Well 8512G-25 D36 496
<b>Company:</b>	EnCana Oil & Gas (USA) Inc	<b>TVD Reference:</b>	KBE @ 8324.0ft (Original Well Elev)
<b>Project:</b>	Story Gulch	<b>MD Reference:</b>	KBE @ 8324.0ft (Original Well Elev)
<b>Site:</b>	S36-T4S-R96W (D36 496)	<b>North Reference:</b>	True
<b>Well:</b>	8512G-25 D36 496	<b>Survey Calculation Method:</b>	Minimum Curvature
<b>Wellbore:</b>	DD		
<b>Design:</b>	Plan #1		

Targets									
Target Name									
- hit/miss target	Dip Angle	Dip Dir.	TVD	+N/-S	+E/-W	Northing	Easting	Latitude	Longitude
- Shape	(°)	(°)	(ft)	(ft)	(ft)	(ft)	(ft)		
8512G-25 D36 496 BHL	0.00	0.00	11,986.0	1,701.9	-387.1	1,679,523.01	2,261,399.47	39° 40' 11.26 N	108° 7' 26.94 W
- plan hits target center									
- Rectangle (sides W30.0 H50.0 D0.0)									
8512G-25 D36 496 TOG	0.00	0.00	8,117.0	1,711.9	-370.1	1,679,532.50	2,261,416.72	39° 40' 11.36 N	108° 7' 26.72 W
- plan hits target center									
- Point									

Formations						
Measured Depth	Vertical Depth	Name	Lithology	Dip	Dip Direction	
(ft)	(ft)			(°)	(°)	
1,271.5	1,251.0	A_GROOVE (TVD)				
2,490.7	2,438.0	GARDEN_GULCH / L-1 (TVD)				
5,977.6	5,833.0	WASATCH_G (TVD)				
8,275.5	8,077.0	WILLIAMS_FORK (TVD)				
8,315.5	8,117.0	TOG (TVD)				
12,184.6	11,986.0	ROLLINS (TVD)				
12,423.6	12,225.0	COZZETTE (TVD)				
12,651.6	12,453.0	CORCORAN (TVD)				
12,707.6	12,509.0	LOWER_SEGO (TVD)				
12,870.6	12,672.0	SEGO (TVD)				

Plan Annotations				
Measured Depth	Vertical Depth	Local Coordinates		Comment
(ft)	(ft)	+N/-S (ft)	+E/-W (ft)	
200.0	200.0	0.0	0.0	KOP @ 200' MD
639.5	635.7	49.2	-10.6	EOB; Inc=13.19°
7,876.0	7,681.3	1,662.7	-359.5	Start Drop -3.00
8,315.5	8,117.0	1,711.9	-370.1	EOD; inc=0°
12,284.6	12,086.0	1,711.7	-370.4	Drillers TD @ 12284.6' MD
13,284.6	13,086.0	1,701.9	-387.1	Permit TD @ 13284.6' MD