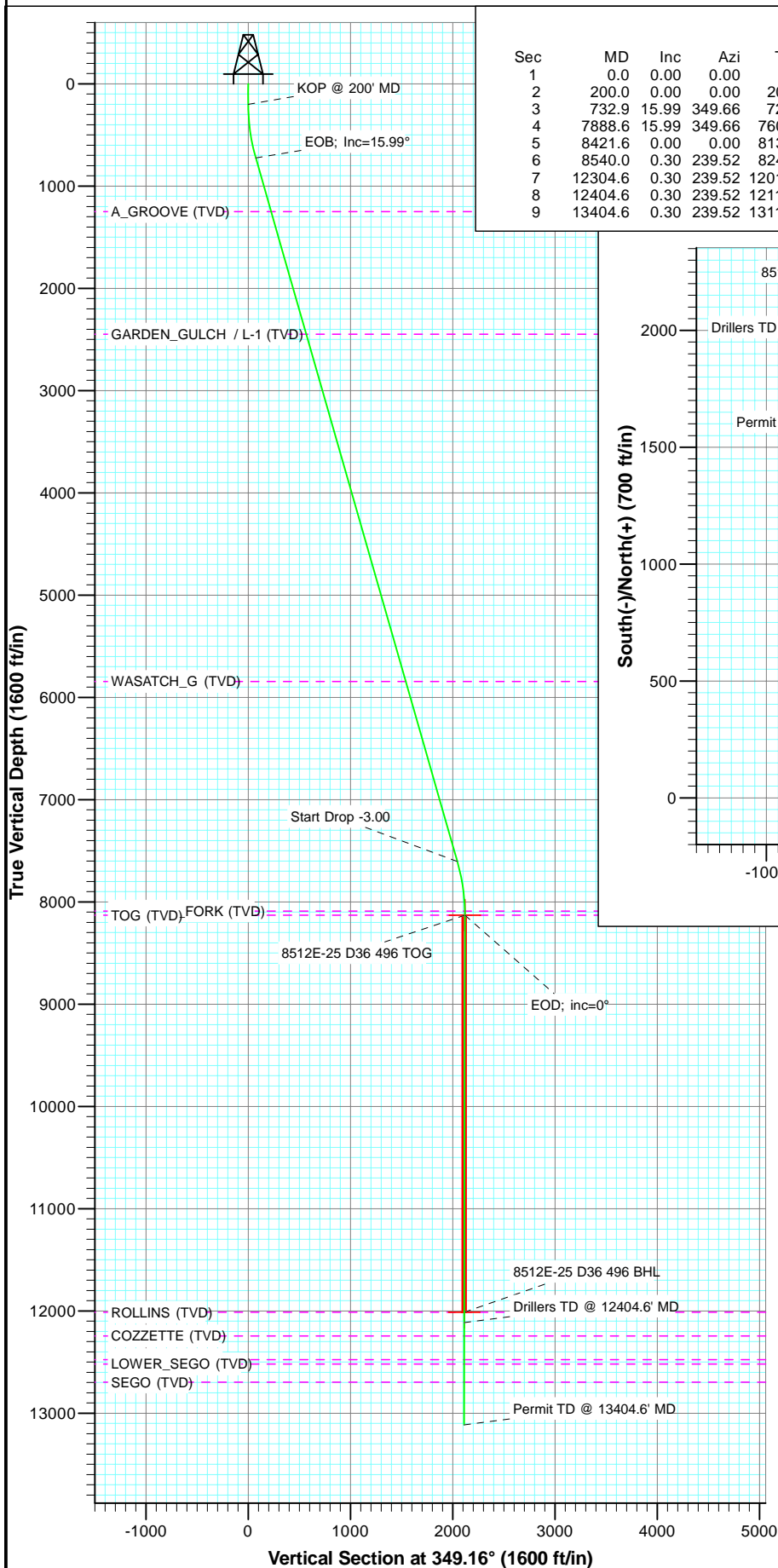


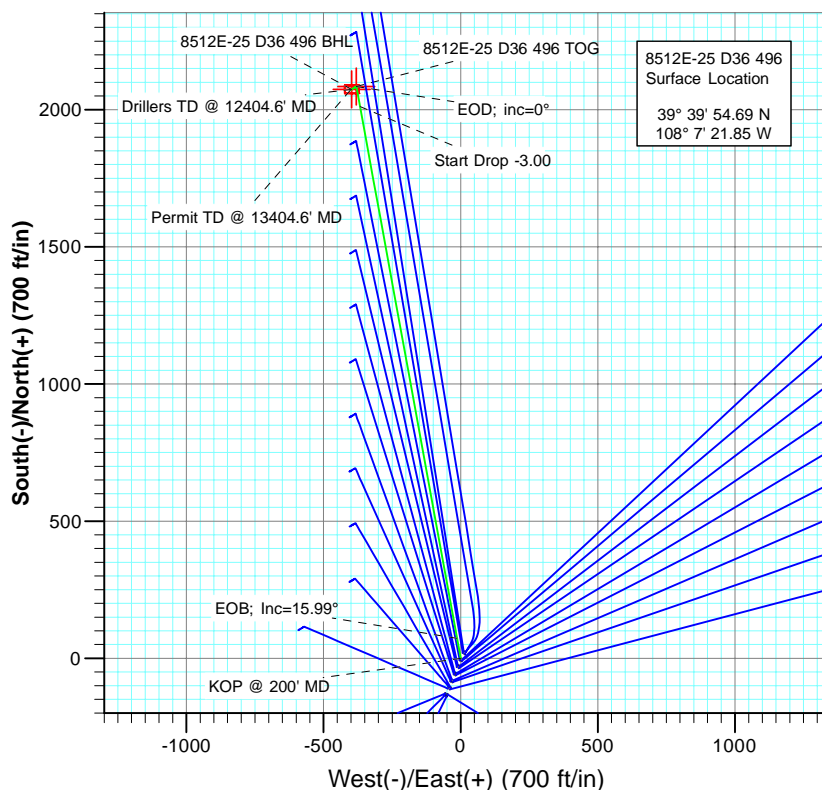


Project: Story Gulch
Site: S36-T4S-R96W (D36 496)
Well: 8512E-25 D36 496
Wellbore: DD
Plan: Plan #1



SECTION DETAILS

Sec	MD	Inc	Azi	TVD	+N/-S	+E/-W	Dleg	TFace	VSect	Target
1	0.0	0.00	0.00	0.0	0.0	0.0	0.00	0.00	0.0	
2	200.0	0.00	0.00	200.0	0.0	0.0	0.00	0.00	0.0	
3	732.9	15.99	349.66	726.0	72.7	-13.3	3.00	349.66	73.9	
4	7888.6	15.99	349.66	7605.0	2011.6	-366.9	0.00	0.00	2044.7	
5	8421.6	0.00	0.00	8131.0	2084.3	-380.2	3.00	180.00	2118.6	8512E-25 D36 496 TOG
6	8540.0	0.30	239.52	8249.4	2084.1	-380.5	0.25	239.52	2118.5	
7	12304.6	0.30	239.52	12014.0	2074.3	-397.2	0.00	0.00	2112.0	8512E-25 D36 496 BHL
8	12404.6	0.30	239.52	12114.0	2074.0	-397.7	0.00	0.00	2111.8	
9	13404.6	0.30	239.52	13114.0	2071.4	-402.1	0.00	0.00	2110.1	



FORMATION TOP DETAILS

TVDPath	MDPath	Formation
1251.0	1279.0	A_GROOVE (TVD)
2449.0	2525.2	GARDEN_GULCH / L-1 (TVD)
5846.0	6058.9	WASATCH_G (TVD)
8091.0	8381.6	WILLIAMS_FORK (TVD)
8131.0	8421.6	TOG (TVD)
12014.0	12304.6	ROLLINS (TVD)
12246.0	12536.6	COZZETTE (TVD)
12477.0	12767.6	CORCORAN (TVD)
12519.0	12809.6	LOWER_SEGO (TVD)
12696.0	12986.6	SEGO (TVD)



Azimuths to True North
Magnetic North: 10.44°

Magnetic Field
Strength: 52310.9nT
Dip Angle: 65.86°
Date: 5/31/2011
Model: IGRF2010

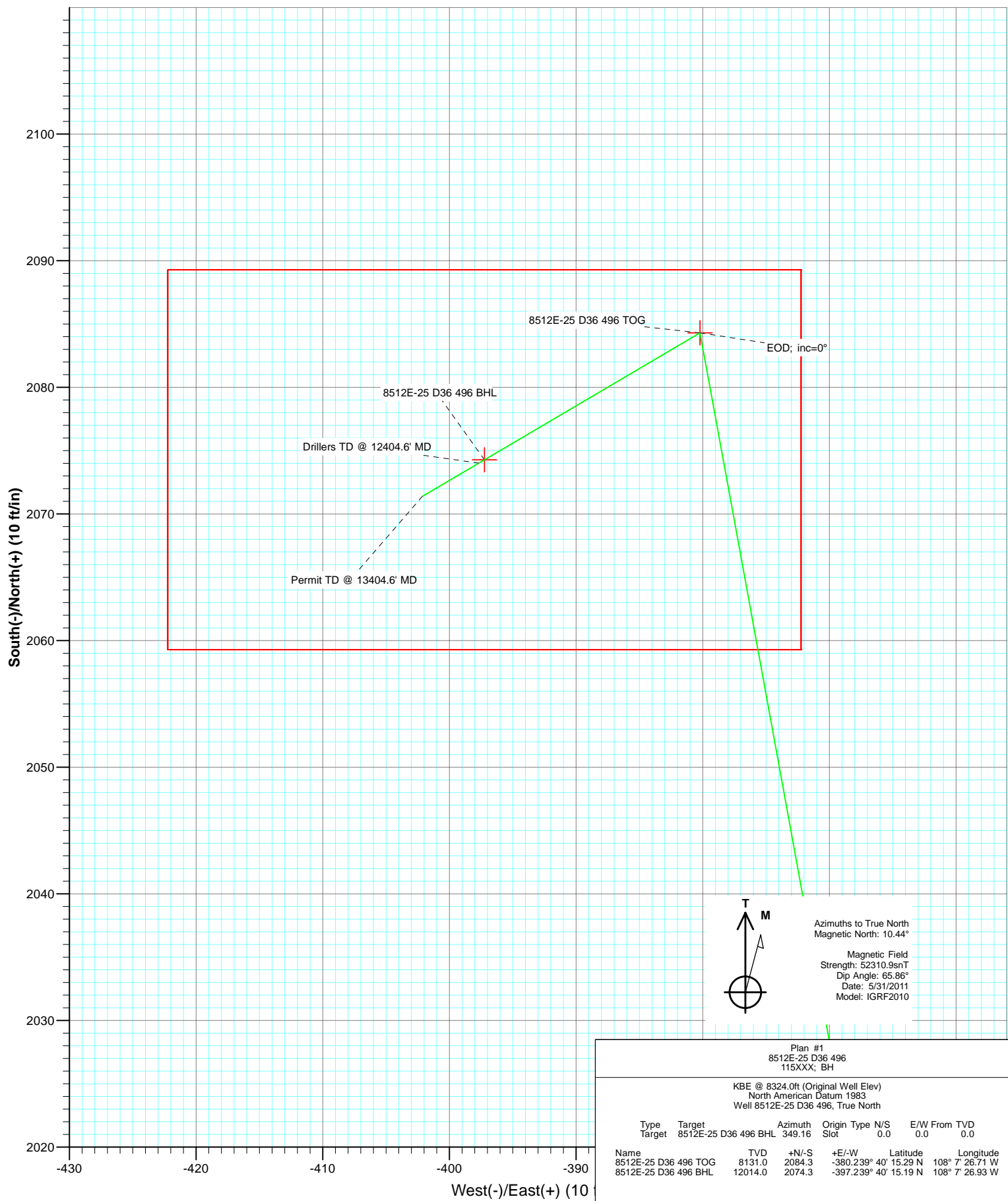
Plan #1
8512E-25 D36 496
115XXX; BH

KBE @ 8324.0ft (Original Well Elev)
North American Datum 1983
Well 8512E-25 D36 496, True North

Type	Target	Target	Azimuth	Origin	Type	N/S	E/W	From	TVD
		8512E-25 D36 496 BHL	349.16	Slot		0.0	0.0		0.0
Name	TVD	+N/-S	+E/-W	Latitude	Longitude				
8512E-25 D36 496 TOG	8131.0	2084.3	-380.239° 40'	15.29 N	108° 7' 26.71 W				
8512E-25 D36 496 BHL	12014.0	2074.3	-397.239° 40'	15.19 N	108° 7' 26.93 W				



Project: Story Gulch
Site: S36-T4S-R96W (D36 496)
Well: 8512E-25 D36 496
Wellbore: DD
Plan: Plan #1



Cathedral Energy Services

Planning Report

Database:	EDM 5000.1 US Multi Users DB	Local Co-ordinate Reference:	Well 8512E-25 D36 496
Company:	EnCana Oil & Gas (USA) Inc	TVD Reference:	KBE @ 8324.0ft (Original Well Elev)
Project:	Story Gulch	MD Reference:	KBE @ 8324.0ft (Original Well Elev)
Site:	S36-T4S-R96W (D36 496)	North Reference:	True
Well:	8512E-25 D36 496	Survey Calculation Method:	Minimum Curvature
Wellbore:	DD		
Design:	Plan #1		

Project	Story Gulch		
Map System:	US State Plane 1983	System Datum:	Mean Sea Level
Geo Datum:	North American Datum 1983		
Map Zone:	Colorado Central Zone		

Site		S36-T4S-R96W (D36 496)			
Site Position:		Northing:	1,677,676.10 ft	Latitude:	39° 39' 53.09 N
From:	Lat/Long	Easting:	2,261,675.01 ft	Longitude:	108° 7' 22.74 W
Position Uncertainty:	0.0 ft	Slot Radius:	13.200 in	Grid Convergence:	-1.65 °

Well	8512E-25 D36 496					
Well Position	+N/-S	0.0 ft	Northing:	1,677,835.60 ft	Latitude:	39° 39' 54.69 N
	+E/-W	0.0 ft	Easting:	2,261,748.92 ft	Longitude:	108° 7' 21.85 W
Position Uncertainty		0.0 ft	Wellhead Elevation:	ft	Ground Level:	8,302.0 ft

Wellbore	DD				
Magnetics	Model Name	Sample Date	Declination (°)	Dip Angle (°)	Field Strength (nT)
	IGRF2010	5/31/2011	10.44	65.86	52,311

Design	Plan #1				
Audit Notes:					
Version:	Phase:	PLAN	Tie On Depth:	0.0	
Vertical Section:	Depth From (TVD) (ft)	+N/-S (ft)	+E/-W (ft)	Direction (°)	
	0.0	0.0	0.0	349.16	

Plan Sections										
Measured Depth (ft)	Inclination (°)	Azimuth (°)	Vertical Depth (ft)	+N/-S (ft)	+E/-W (ft)	Dogleg Rate (°/100ft)	Build Rate (°/100ft)	Turn Rate (°/100ft)	TFO (°)	Target
0.0	0.00	0.00	0.0	0.0	0.0	0.00	0.00	0.00	0.00	
200.0	0.00	0.00	200.0	0.0	0.0	0.00	0.00	0.00	0.00	
732.9	15.99	349.66	726.0	72.7	-13.3	3.00	3.00	0.00	349.66	
7,888.6	15.99	349.66	7,605.0	2,011.6	-366.9	0.00	0.00	0.00	0.00	
8,421.6	0.00	0.00	8,131.0	2,084.3	-380.2	3.00	-3.00	0.00	180.00	8512E-25 D36 496 TC
8,540.0	0.30	239.52	8,249.4	2,084.1	-380.5	0.25	0.25	-101.74	239.52	
12,304.6	0.30	239.52	12,014.0	2,074.3	-397.2	0.00	0.00	0.00	0.00	8512E-25 D36 496 Bl
12,404.6	0.30	239.52	12,114.0	2,074.0	-397.7	0.00	0.00	0.00	0.00	
13,404.6	0.30	239.52	13,114.0	2,071.4	-402.1	0.00	0.00	0.00	0.00	

Cathedral Energy Services

Planning Report

Database:	EDM 5000.1 US Multi Users DB	Local Co-ordinate Reference:	Well 8512E-25 D36 496
Company:	EnCana Oil & Gas (USA) Inc	TVD Reference:	KBE @ 8324.0ft (Original Well Elev)
Project:	Story Gulch	MD Reference:	KBE @ 8324.0ft (Original Well Elev)
Site:	S36-T4S-R96W (D36 496)	North Reference:	True
Well:	8512E-25 D36 496	Survey Calculation Method:	Minimum Curvature
Wellbore:	DD		
Design:	Plan #1		

Planned Survey

Measured Depth (ft)	Inclination (°)	Azimuth (°)	Vertical Depth (ft)	+N/-S (ft)	+E/-W (ft)	Vertical Section (ft)	Dogleg Rate (°/100ft)	Build Rate (°/100ft)	Comments / Formations
0.0	0.00	0.00	0.0	0.0	0.0	0.0	0.00	0.00	
100.0	0.00	0.00	100.0	0.0	0.0	0.0	0.00	0.00	
200.0	0.00	0.00	200.0	0.0	0.0	0.0	0.00	0.00	KOP @ 200' MD
300.0	3.00	349.66	300.0	2.6	-0.5	2.6	3.00	3.00	
400.0	6.00	349.66	399.6	10.3	-1.9	10.5	3.00	3.00	
500.0	9.00	349.66	498.8	23.1	-4.2	23.5	3.00	3.00	
600.0	12.00	349.66	597.1	41.1	-7.5	41.7	3.00	3.00	
700.0	15.00	349.66	694.3	64.0	-11.7	65.1	3.00	3.00	
732.9	15.99	349.66	726.0	72.7	-13.3	73.9	3.00	3.00	EOB; Inc=15.99°
800.0	15.99	349.66	790.5	90.8	-16.6	92.3	0.00	0.00	
900.0	15.99	349.66	886.6	117.9	-21.5	119.9	0.00	0.00	
1,000.0	15.99	349.66	982.8	145.0	-26.5	147.4	0.00	0.00	
1,100.0	15.99	349.66	1,078.9	172.1	-31.4	175.0	0.00	0.00	
1,200.0	15.99	349.66	1,175.0	199.2	-36.3	202.5	0.00	0.00	
1,279.0	15.99	349.66	1,251.0	220.6	-40.2	224.3	0.00	0.00	A_GROOVE (TVD)
1,300.0	15.99	349.66	1,271.2	226.3	-41.3	230.1	0.00	0.00	
1,400.0	15.99	349.66	1,367.3	253.4	-46.2	257.6	0.00	0.00	
1,500.0	15.99	349.66	1,463.4	280.5	-51.2	285.1	0.00	0.00	
1,600.0	15.99	349.66	1,559.6	307.6	-56.1	312.7	0.00	0.00	
1,700.0	15.99	349.66	1,655.7	334.7	-61.1	340.2	0.00	0.00	
1,800.0	15.99	349.66	1,751.8	361.8	-66.0	367.8	0.00	0.00	
1,900.0	15.99	349.66	1,848.0	388.9	-70.9	395.3	0.00	0.00	
2,000.0	15.99	349.66	1,944.1	416.0	-75.9	422.9	0.00	0.00	
2,100.0	15.99	349.66	2,040.2	443.1	-80.8	450.4	0.00	0.00	
2,200.0	15.99	349.66	2,136.4	470.2	-85.8	477.9	0.00	0.00	
2,300.0	15.99	349.66	2,232.5	497.3	-90.7	505.5	0.00	0.00	
2,400.0	15.99	349.66	2,328.6	524.4	-95.7	533.0	0.00	0.00	
2,500.0	15.99	349.66	2,424.8	551.5	-100.6	560.6	0.00	0.00	
2,525.2	15.99	349.66	2,449.0	558.3	-101.8	567.5	0.00	0.00	GARDEN_GULCH / L-1 (TVD)
2,600.0	15.99	349.66	2,520.9	578.6	-105.5	588.1	0.00	0.00	
2,700.0	15.99	349.66	2,617.0	605.7	-110.5	615.7	0.00	0.00	
2,800.0	15.99	349.66	2,713.2	632.8	-115.4	643.2	0.00	0.00	
2,900.0	15.99	349.66	2,809.3	659.9	-120.4	670.7	0.00	0.00	
3,000.0	15.99	349.66	2,905.4	687.0	-125.3	698.3	0.00	0.00	
3,100.0	15.99	349.66	3,001.6	714.1	-130.3	725.8	0.00	0.00	
3,200.0	15.99	349.66	3,097.7	741.2	-135.2	753.4	0.00	0.00	
3,300.0	15.99	349.66	3,193.8	768.3	-140.1	780.9	0.00	0.00	
3,400.0	15.99	349.66	3,289.9	795.4	-145.1	808.5	0.00	0.00	
3,500.0	15.99	349.66	3,386.1	822.5	-150.0	836.0	0.00	0.00	
3,600.0	15.99	349.66	3,482.2	849.6	-155.0	863.5	0.00	0.00	
3,700.0	15.99	349.66	3,578.3	876.6	-159.9	891.1	0.00	0.00	
3,800.0	15.99	349.66	3,674.5	903.7	-164.9	918.6	0.00	0.00	
3,900.0	15.99	349.66	3,770.6	930.8	-169.8	946.2	0.00	0.00	
4,000.0	15.99	349.66	3,866.7	957.9	-174.7	973.7	0.00	0.00	
4,100.0	15.99	349.66	3,962.9	985.0	-179.7	1,001.3	0.00	0.00	
4,200.0	15.99	349.66	4,059.0	1,012.1	-184.6	1,028.8	0.00	0.00	
4,300.0	15.99	349.66	4,155.1	1,039.2	-189.6	1,056.3	0.00	0.00	
4,400.0	15.99	349.66	4,251.3	1,066.3	-194.5	1,083.9	0.00	0.00	
4,500.0	15.99	349.66	4,347.4	1,093.4	-199.5	1,111.4	0.00	0.00	
4,600.0	15.99	349.66	4,443.5	1,120.5	-204.4	1,139.0	0.00	0.00	
4,700.0	15.99	349.66	4,539.7	1,147.6	-209.3	1,166.5	0.00	0.00	
4,800.0	15.99	349.66	4,635.8	1,174.7	-214.3	1,194.0	0.00	0.00	

Cathedral Energy Services

Planning Report

Database:	EDM 5000.1 US Multi Users DB	Local Co-ordinate Reference:	Well 8512E-25 D36 496
Company:	EnCana Oil & Gas (USA) Inc	TVD Reference:	KBE @ 8324.0ft (Original Well Elev)
Project:	Story Gulch	MD Reference:	KBE @ 8324.0ft (Original Well Elev)
Site:	S36-T4S-R96W (D36 496)	North Reference:	True
Well:	8512E-25 D36 496	Survey Calculation Method:	Minimum Curvature
Wellbore:	DD		
Design:	Plan #1		

Planned Survey									
Measured Depth (ft)	Inclination (°)	Azimuth (°)	Vertical Depth (ft)	+N/-S (ft)	+E/-W (ft)	Vertical Section (ft)	Dogleg Rate (°/100ft)	Build Rate (°/100ft)	Comments / Formations
4,900.0	15.99	349.66	4,731.9	1,201.8	-219.2	1,221.6	0.00	0.00	
5,000.0	15.99	349.66	4,828.1	1,228.9	-224.2	1,249.1	0.00	0.00	
5,100.0	15.99	349.66	4,924.2	1,256.0	-229.1	1,276.7	0.00	0.00	
5,200.0	15.99	349.66	5,020.3	1,283.1	-234.1	1,304.2	0.00	0.00	
5,300.0	15.99	349.66	5,116.5	1,310.2	-239.0	1,331.8	0.00	0.00	
5,400.0	15.99	349.66	5,212.6	1,337.3	-243.9	1,359.3	0.00	0.00	
5,500.0	15.99	349.66	5,308.7	1,364.4	-248.9	1,386.8	0.00	0.00	
5,600.0	15.99	349.66	5,404.8	1,391.5	-253.8	1,414.4	0.00	0.00	
5,700.0	15.99	349.66	5,501.0	1,418.6	-258.8	1,441.9	0.00	0.00	
5,800.0	15.99	349.66	5,597.1	1,445.7	-263.7	1,469.5	0.00	0.00	
5,900.0	15.99	349.66	5,693.2	1,472.8	-268.7	1,497.0	0.00	0.00	
6,000.0	15.99	349.66	5,789.4	1,499.9	-273.6	1,524.6	0.00	0.00	
6,058.9	15.99	349.66	5,846.0	1,515.8	-276.5	1,540.8	0.00	0.00	WASATCH_G (TVD)
6,100.0	15.99	349.66	5,885.5	1,527.0	-278.5	1,552.1	0.00	0.00	
6,200.0	15.99	349.66	5,981.6	1,554.1	-283.5	1,579.6	0.00	0.00	
6,300.0	15.99	349.66	6,077.8	1,581.2	-288.4	1,607.2	0.00	0.00	
6,400.0	15.99	349.66	6,173.9	1,608.3	-293.4	1,634.7	0.00	0.00	
6,500.0	15.99	349.66	6,270.0	1,635.4	-298.3	1,662.3	0.00	0.00	
6,600.0	15.99	349.66	6,366.2	1,662.4	-303.2	1,689.8	0.00	0.00	
6,700.0	15.99	349.66	6,462.3	1,689.5	-308.2	1,717.4	0.00	0.00	
6,800.0	15.99	349.66	6,558.4	1,716.6	-313.1	1,744.9	0.00	0.00	
6,900.0	15.99	349.66	6,654.6	1,743.7	-318.1	1,772.4	0.00	0.00	
7,000.0	15.99	349.66	6,750.7	1,770.8	-323.0	1,800.0	0.00	0.00	
7,100.0	15.99	349.66	6,846.8	1,797.9	-328.0	1,827.5	0.00	0.00	
7,200.0	15.99	349.66	6,943.0	1,825.0	-332.9	1,855.1	0.00	0.00	
7,300.0	15.99	349.66	7,039.1	1,852.1	-337.8	1,882.6	0.00	0.00	
7,400.0	15.99	349.66	7,135.2	1,879.2	-342.8	1,910.2	0.00	0.00	
7,500.0	15.99	349.66	7,231.4	1,906.3	-347.7	1,937.7	0.00	0.00	
7,600.0	15.99	349.66	7,327.5	1,933.4	-352.7	1,965.2	0.00	0.00	
7,700.0	15.99	349.66	7,423.6	1,960.5	-357.6	1,992.8	0.00	0.00	
7,800.0	15.99	349.66	7,519.8	1,987.6	-362.6	2,020.3	0.00	0.00	
7,888.6	15.99	349.66	7,605.0	2,011.6	-366.9	2,044.7	0.00	0.00	Start Drop -3.00
7,900.0	15.65	349.66	7,615.9	2,014.7	-367.5	2,047.8	3.00	-3.00	
8,000.0	12.65	349.66	7,712.8	2,038.7	-371.9	2,072.3	3.00	-3.00	
8,100.0	9.65	349.66	7,811.0	2,057.7	-375.4	2,091.6	3.00	-3.00	
8,200.0	6.65	349.66	7,909.9	2,071.7	-377.9	2,105.8	3.00	-3.00	
8,300.0	3.65	349.66	8,009.5	2,080.5	-379.5	2,114.7	3.00	-3.00	
8,381.6	1.20	349.66	8,091.0	2,083.9	-380.1	2,118.2	3.00	-3.00	WILLIAMS_FORK (TVD)
8,400.0	0.65	349.66	8,109.4	2,084.2	-380.2	2,118.5	3.00	-3.00	
8,421.6	0.00	0.00	8,131.0	2,084.3	-380.2	2,118.6	3.00	-3.00	EOD; inc=0° - TOG (TVD) - 8512E-25 D36 496
8,500.0	0.20	239.52	8,209.4	2,084.2	-380.3	2,118.6	0.25	0.25	
8,540.0	0.30	239.52	8,249.4	2,084.1	-380.5	2,118.5	0.25	0.25	
8,600.0	0.30	239.52	8,309.4	2,084.0	-380.7	2,118.4	0.00	0.00	
8,700.0	0.30	239.52	8,409.4	2,083.7	-381.2	2,118.2	0.00	0.00	
8,800.0	0.30	239.52	8,509.4	2,083.5	-381.6	2,118.1	0.00	0.00	
8,900.0	0.30	239.52	8,609.4	2,083.2	-382.1	2,117.9	0.00	0.00	
9,000.0	0.30	239.52	8,709.4	2,082.9	-382.5	2,117.7	0.00	0.00	
9,100.0	0.30	239.52	8,809.4	2,082.7	-383.0	2,117.5	0.00	0.00	
9,200.0	0.30	239.52	8,909.4	2,082.4	-383.4	2,117.4	0.00	0.00	
9,300.0	0.30	239.52	9,009.4	2,082.2	-383.8	2,117.2	0.00	0.00	
9,400.0	0.30	239.52	9,109.4	2,081.9	-384.3	2,117.0	0.00	0.00	
9,500.0	0.30	239.52	9,209.4	2,081.6	-384.7	2,116.8	0.00	0.00	

Cathedral Energy Services

Planning Report

Database:	EDM 5000.1 US Multi Users DB	Local Co-ordinate Reference:	Well 8512E-25 D36 496
Company:	EnCana Oil & Gas (USA) Inc	TVD Reference:	KBE @ 8324.0ft (Original Well Elev)
Project:	Story Gulch	MD Reference:	KBE @ 8324.0ft (Original Well Elev)
Site:	S36-T4S-R96W (D36 496)	North Reference:	True
Well:	8512E-25 D36 496	Survey Calculation Method:	Minimum Curvature
Wellbore:	DD		
Design:	Plan #1		

Planned Survey									
Measured Depth (ft)	Inclination (°)	Azimuth (°)	Vertical Depth (ft)	+N/-S (ft)	+E/-W (ft)	Vertical Section (ft)	Dogleg Rate (°/100ft)	Build Rate (°/100ft)	Comments / Formations
9,600.0	0.30	239.52	9,309.4	2,081.4	-385.2	2,116.7	0.00	0.00	
9,700.0	0.30	239.52	9,409.4	2,081.1	-385.6	2,116.5	0.00	0.00	
9,800.0	0.30	239.52	9,509.4	2,080.8	-386.1	2,116.3	0.00	0.00	
9,900.0	0.30	239.52	9,609.4	2,080.6	-386.5	2,116.1	0.00	0.00	
10,000.0	0.30	239.52	9,709.4	2,080.3	-387.0	2,116.0	0.00	0.00	
10,100.0	0.30	239.52	9,809.4	2,080.1	-387.4	2,115.8	0.00	0.00	
10,200.0	0.30	239.52	9,909.4	2,079.8	-387.9	2,115.6	0.00	0.00	
10,300.0	0.30	239.52	10,009.4	2,079.5	-388.3	2,115.5	0.00	0.00	
10,400.0	0.30	239.52	10,109.4	2,079.3	-388.7	2,115.3	0.00	0.00	
10,500.0	0.30	239.52	10,209.4	2,079.0	-389.2	2,115.1	0.00	0.00	
10,600.0	0.30	239.52	10,309.4	2,078.7	-389.6	2,114.9	0.00	0.00	
10,700.0	0.30	239.52	10,409.4	2,078.5	-390.1	2,114.8	0.00	0.00	
10,800.0	0.30	239.52	10,509.4	2,078.2	-390.5	2,114.6	0.00	0.00	
10,900.0	0.30	239.52	10,609.4	2,078.0	-391.0	2,114.4	0.00	0.00	
11,000.0	0.30	239.52	10,709.4	2,077.7	-391.4	2,114.2	0.00	0.00	
11,100.0	0.30	239.52	10,809.4	2,077.4	-391.9	2,114.1	0.00	0.00	
11,200.0	0.30	239.52	10,909.4	2,077.2	-392.3	2,113.9	0.00	0.00	
11,300.0	0.30	239.52	11,009.4	2,076.9	-392.8	2,113.7	0.00	0.00	
11,400.0	0.30	239.52	11,109.4	2,076.6	-393.2	2,113.5	0.00	0.00	
11,500.0	0.30	239.52	11,209.4	2,076.4	-393.6	2,113.4	0.00	0.00	
11,600.0	0.30	239.52	11,309.4	2,076.1	-394.1	2,113.2	0.00	0.00	
11,700.0	0.30	239.52	11,409.4	2,075.9	-394.5	2,113.0	0.00	0.00	
11,800.0	0.30	239.52	11,509.4	2,075.6	-395.0	2,112.8	0.00	0.00	
11,900.0	0.30	239.52	11,609.4	2,075.3	-395.4	2,112.7	0.00	0.00	
12,000.0	0.30	239.52	11,709.4	2,075.1	-395.9	2,112.5	0.00	0.00	
12,100.0	0.30	239.52	11,809.4	2,074.8	-396.3	2,112.3	0.00	0.00	
12,200.0	0.30	239.52	11,909.4	2,074.6	-396.8	2,112.2	0.00	0.00	
12,300.0	0.30	239.52	12,009.4	2,074.3	-397.2	2,112.0	0.00	0.00	
12,304.6	0.30	239.52	12,014.0	2,074.3	-397.2	2,112.0	0.00	0.00	ROLLINS (TVD) - 8512E-25 D36 496 BHL
12,400.0	0.30	239.52	12,109.4	2,074.0	-397.7	2,111.8	0.00	0.00	
12,404.6	0.30	239.52	12,114.0	2,074.0	-397.7	2,111.8	0.00	0.00	Drillers TD @ 12404.6' MD
12,500.0	0.30	239.52	12,209.4	2,073.8	-398.1	2,111.6	0.00	0.00	
12,536.6	0.30	239.52	12,246.0	2,073.7	-398.3	2,111.6	0.00	0.00	COZZETTE (TVD)
12,600.0	0.30	239.52	12,309.4	2,073.5	-398.5	2,111.5	0.00	0.00	
12,700.0	0.30	239.52	12,409.4	2,073.2	-399.0	2,111.3	0.00	0.00	
12,767.6	0.30	239.52	12,477.0	2,073.1	-399.3	2,111.2	0.00	0.00	CORCORAN (TVD)
12,800.0	0.30	239.52	12,509.4	2,073.0	-399.4	2,111.1	0.00	0.00	
12,809.6	0.30	239.52	12,519.0	2,073.0	-399.5	2,111.1	0.00	0.00	LOWER_SEGO (TVD)
12,900.0	0.30	239.52	12,609.4	2,072.7	-399.9	2,110.9	0.00	0.00	
12,986.6	0.30	239.52	12,696.0	2,072.5	-400.3	2,110.8	0.00	0.00	SEGO (TVD)
13,000.0	0.30	239.52	12,709.4	2,072.5	-400.3	2,110.8	0.00	0.00	
13,100.0	0.30	239.52	12,809.4	2,072.2	-400.8	2,110.6	0.00	0.00	
13,200.0	0.30	239.52	12,909.4	2,071.9	-401.2	2,110.4	0.00	0.00	
13,300.0	0.30	239.52	13,009.4	2,071.7	-401.7	2,110.2	0.00	0.00	
13,400.0	0.30	239.52	13,109.4	2,071.4	-402.1	2,110.1	0.00	0.00	
13,404.6	0.30	239.52	13,114.0	2,071.4	-402.1	2,110.1	0.00	0.00	Permit TD @ 13404.6' MD

Cathedral Energy Services

Planning Report

Database:	EDM 5000.1 US Multi Users DB	Local Co-ordinate Reference:	Well 8512E-25 D36 496
Company:	EnCana Oil & Gas (USA) Inc	TVD Reference:	KBE @ 8324.0ft (Original Well Elev)
Project:	Story Gulch	MD Reference:	KBE @ 8324.0ft (Original Well Elev)
Site:	S36-T4S-R96W (D36 496)	North Reference:	True
Well:	8512E-25 D36 496	Survey Calculation Method:	Minimum Curvature
Wellbore:	DD		
Design:	Plan #1		

Targets									
Target Name									
- hit/miss target	Dip Angle	Dip Dir.	TVD	+N/-S	+E/-W	Northing	Easting	Latitude	Longitude
- Shape	(°)	(°)	(ft)	(ft)	(ft)	(ft)	(ft)		
8512E-25 D36 496 BHL	0.00	0.00	12,014.0	2,074.3	-397.2	1,679,920.47	2,261,411.74	39° 40' 15.19 N	108° 7' 26.93 W
- plan hits target center									
- Rectangle (sides W30.0 H50.0 D0.0)									
8512E-25 D36 496 TOG	0.00	0.00	8,131.0	2,084.3	-380.2	1,679,930.00	2,261,429.05	39° 40' 15.29 N	108° 7' 26.71 W
- plan hits target center									
- Point									

Formations						
Measured Depth	Vertical Depth	Name	Lithology	Dip	Dip Direction	
(ft)	(ft)			(°)	(°)	
1,279.0	1,251.0	A_GROOVE (TVD)				
2,525.2	2,449.0	GARDEN_GULCH / L-1 (TVD)				
6,058.9	5,846.0	WASATCH_G (TVD)				
8,381.6	8,091.0	WILLIAMS_FORK (TVD)				
8,421.6	8,131.0	TOG (TVD)				
12,304.6	12,014.0	ROLLINS (TVD)				
12,536.6	12,246.0	COZZETTE (TVD)				
12,767.6	12,477.0	CORCORAN (TVD)				
12,809.6	12,519.0	LOWER_SEGO (TVD)				
12,986.6	12,696.0	SEGO (TVD)				

Plan Annotations				
Measured Depth	Vertical Depth	Local Coordinates		Comment
(ft)	(ft)	+N/-S (ft)	+E/-W (ft)	
200.0	200.0	0.0	0.0	KOP @ 200' MD
732.9	726.0	72.7	-13.3	EOB; Inc=15.99°
7,888.6	7,605.0	2,011.6	-366.9	Start Drop -3.00
8,421.6	8,131.0	2,084.3	-380.2	EOD; inc=0°
12,404.6	12,114.0	2,084.1	-380.5	Drillers TD @ 12404.6' MD
13,404.6	13,114.0	2,074.3	-397.2	Permit TD @ 13404.6' MD