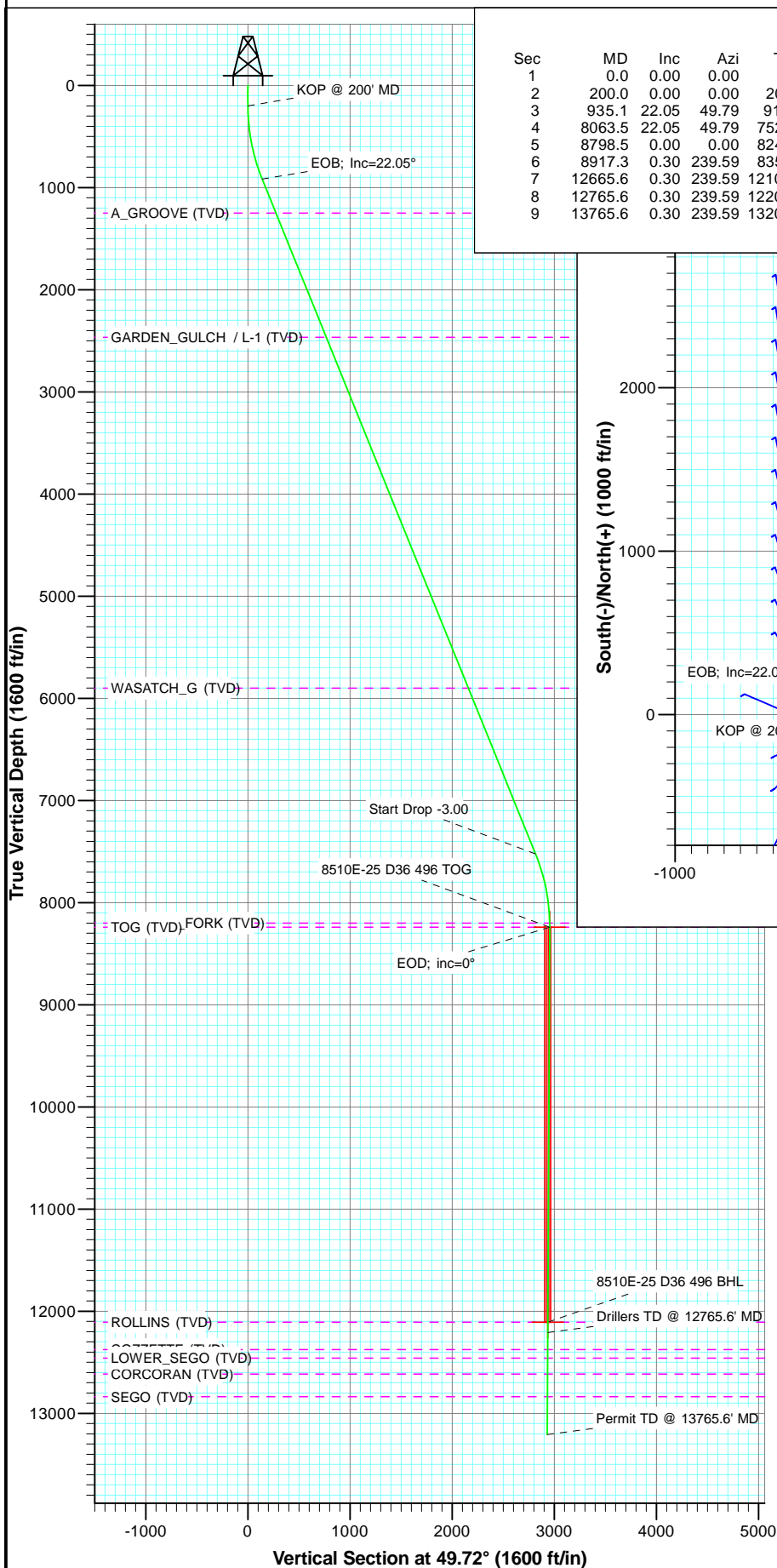
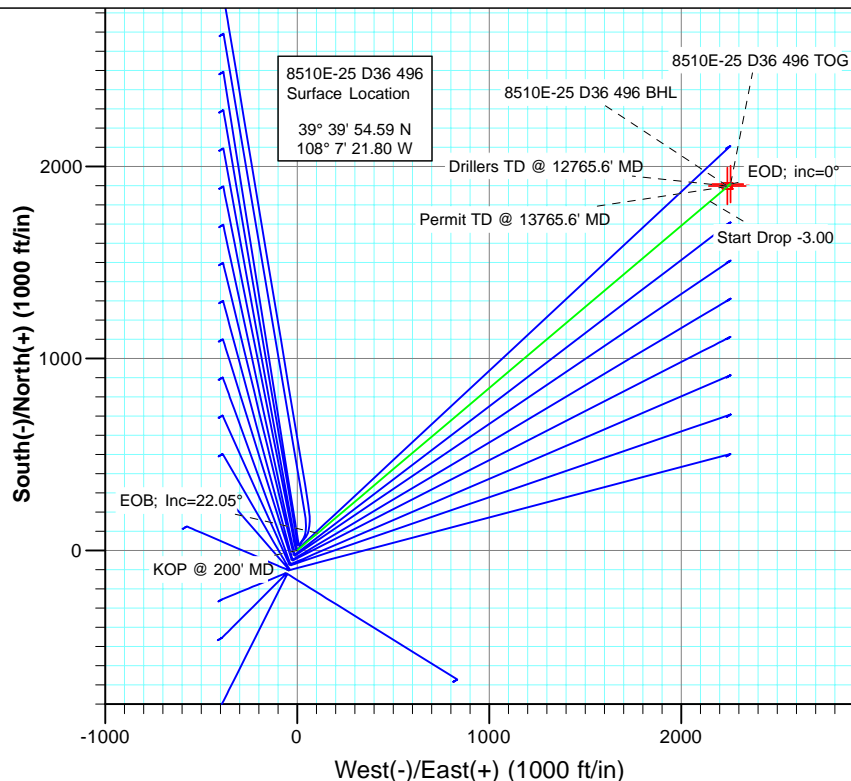




Project: Story Gulch
Site: S36-T4S-R96W (D36 496)
Well: 8510E-25 D36 496
Wellbore: DD
Plan: Plan #1



SECTION DETAILS											
Sec	MD	Inc	Azi	TVD	+N/-S	+E/-W	Dleg	TFace	VSect	Target	
1	0.0	0.00	0.00	0.0	0.0	0.0	0.00	0.00	0.0		
2	200.0	0.00	0.00	200.0	0.0	0.0	0.00	0.00	0.0		
3	935.1	22.05	49.79	917.1	90.2	106.7	3.00	49.79	139.7		
4	8063.5	22.05	49.79	7523.9	1818.1	2150.6	0.00	0.00	2816.1		
5	8798.5	0.00	0.00	8241.0	1908.3	2257.3	3.00	180.00	2955.8	8510E-25 D36 496 TOG	
6	8917.3	0.30	239.59	8359.7	1908.1	2257.0	0.25	239.59	2955.5		
7	12665.6	0.30	239.59	12108.0	1898.3	2240.3	0.00	0.00	2936.4	8510E-25 D36 496 BHL	
8	12765.6	0.30	239.59	12208.0	1898.1	2239.8	0.00	0.00	2935.9		
9	13765.6	0.30	239.59	13208.0	1895.4	2235.4	0.00	0.00	2930.8		



FORMATION TOP DETAILS

TVDPath	MDPath	Formation
1251.0	1295.4	A_GROOVE (TVD)
2467.0	2607.4	GARDEN_GULCH / L-1 (TVD)
5902.0	6313.5	WASATCH_G (TVD)
8201.0	8758.5	WILLIAMS_FORK (TVD)
8241.0	8798.5	TOG (TVD)
12108.0	12665.6	ROLLINS (TVD)
12375.0	12932.6	COZZETTE (TVD)
12460.0	13017.6	LOWER_SEGO (TVD)
12615.0	13172.6	CORCORAN (TVD)
12838.0	13395.6	SEGO (TVD)



Azimuths to True North
Magnetic North: 10.44°

Magnetic Field
Strength: 52310.9nT
Dip Angle: 65.86°
Date: 5/31/2011
Model: IGRF2010

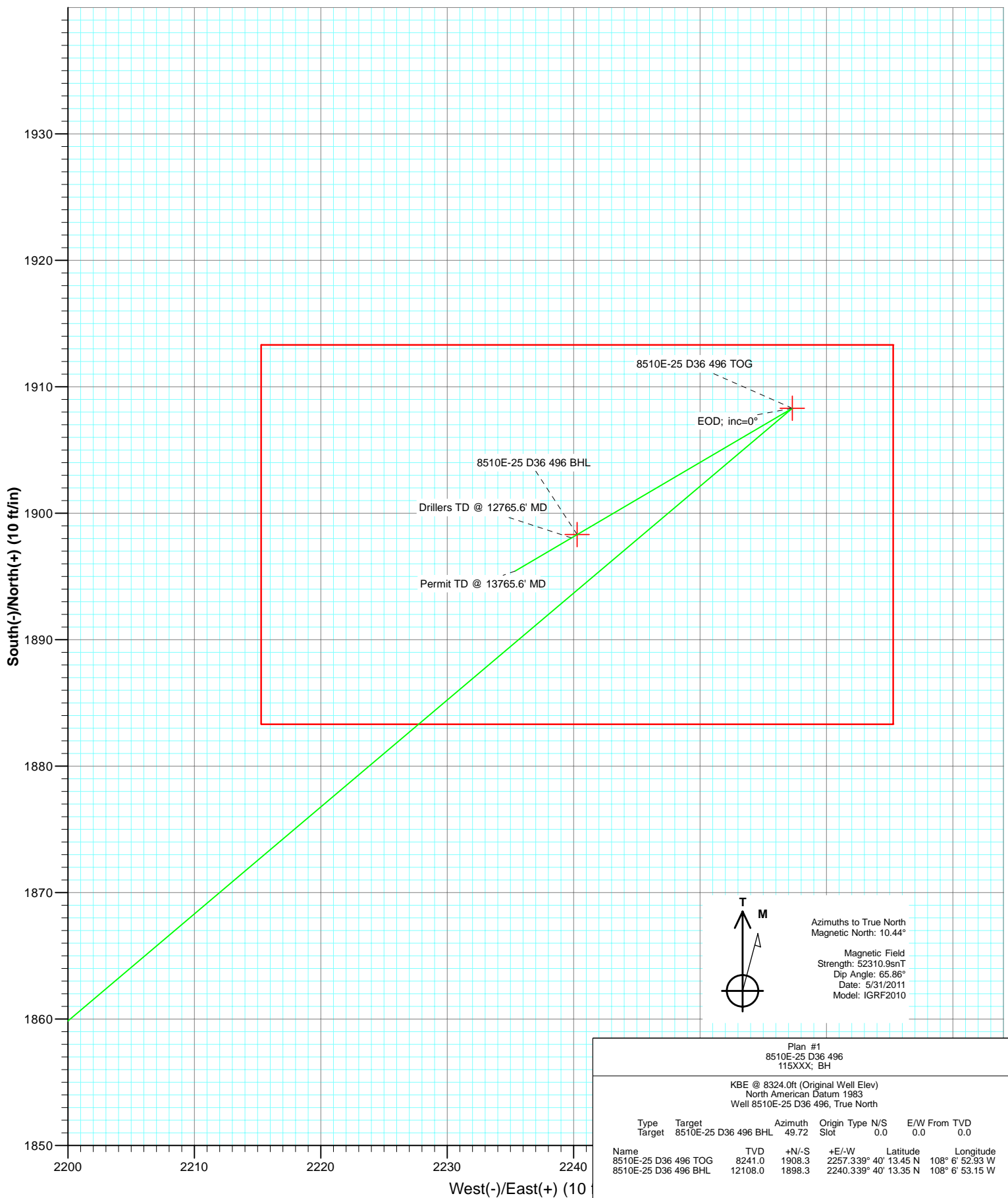
Plan #1
8510E-25 D36 496
115XXX; BH

KBE @ 8324.0ft (Original Well Elev)
North American Datum 1983
Well 8510E-25 D36 496, True North

Type	Target	Target	Azimuth	Origin	Type	N/S	E/W	From	TVD
	Target	8510E-25 D36 496 BHL	49.72	Slot		0.0	0.0		0.0
Name	TVD	+N/-S	+E/-W	Latitude	Longitude				
8510E-25 D36 496 TOG	8241.0	1908.3	2257.339° 40'	13.45 N	108° 6' 52.93 W				
8510E-25 D36 496 BHL	12108.0	1898.3	2240.339° 40'	13.35 N	108° 6' 53.15 W				



Project: Story Gulch
 Site: S36-T4S-R96W (D36 496)
 Well: 8510E-25 D36 496
 Wellbore: DD
 Plan: Plan #1



Cathedral Energy Services

Planning Report

Database:	EDM 5000.1 US Multi Users DB	Local Co-ordinate Reference:	Well 8510E-25 D36 496
Company:	EnCana Oil & Gas (USA) Inc	TVD Reference:	KBE @ 8324.0ft (Original Well Elev)
Project:	Story Gulch	MD Reference:	KBE @ 8324.0ft (Original Well Elev)
Site:	S36-T4S-R96W (D36 496)	North Reference:	True
Well:	8510E-25 D36 496	Survey Calculation Method:	Minimum Curvature
Wellbore:	DD		
Design:	Plan #1		

Project	Story Gulch		
Map System:	US State Plane 1983	System Datum:	Mean Sea Level
Geo Datum:	North American Datum 1983		
Map Zone:	Colorado Central Zone		

Site	S36-T4S-R96W (D36 496)			
Site Position:		Northing:	1,677,676.10 ft	Latitude: 39° 39' 53.09 N
From:	Lat/Long	Easting:	2,261,675.01 ft	Longitude: 108° 7' 22.74 W
Position Uncertainty:	0.0 ft	Slot Radius:	13.200 in	Grid Convergence: -1.65 °

Well	8510E-25 D36 496			
Well Position	+N/-S	0.0 ft	Northing:	1,677,825.37 ft
	+E/-W	0.0 ft	Easting:	2,261,752.54 ft
Position Uncertainty	0.0 ft		Wellhead Elevation:	ft
			Ground Level:	8,302.0 ft

Wellbore	DD				
Magnetics	Model Name	Sample Date	Declination (°)	Dip Angle (°)	Field Strength (nT)
	IGRF2010	5/31/2011	10.44	65.86	52,311

Design	Plan #1			
Audit Notes:				
Version:	Phase:	PLAN	Tie On Depth:	0.0
Vertical Section:	Depth From (TVD) (ft)	+N/-S (ft)	+E/-W (ft)	Direction (°)
	0.0	0.0	0.0	49.72

Plan Sections										
Measured Depth (ft)	Inclination (°)	Azimuth (°)	Vertical Depth (ft)	+N/-S (ft)	+E/-W (ft)	Dogleg Rate (°/100ft)	Build Rate (°/100ft)	Turn Rate (°/100ft)	TFO (°)	Target
0.0	0.00	0.00	0.0	0.0	0.0	0.00	0.00	0.00	0.00	
200.0	0.00	0.00	200.0	0.0	0.0	0.00	0.00	0.00	0.00	
935.1	22.05	49.79	917.1	90.2	106.7	3.00	3.00	0.00	49.79	
8,063.5	22.05	49.79	7,523.9	1,818.1	2,150.6	0.00	0.00	0.00	0.00	
8,798.5	0.00	0.00	8,241.0	1,908.3	2,257.3	3.00	-3.00	0.00	180.00	8510E-25 D36 496 TC
8,917.3	0.30	239.59	8,359.7	1,908.1	2,257.0	0.25	0.25	-101.40	239.59	
12,665.6	0.30	239.59	12,108.0	1,898.3	2,240.3	0.00	0.00	0.00	0.00	8510E-25 D36 496 Bt
12,765.6	0.30	239.59	12,208.0	1,898.1	2,239.8	0.00	0.00	0.00	0.00	
13,765.6	0.30	239.59	13,208.0	1,895.4	2,235.4	0.00	0.00	0.00	0.00	

Cathedral Energy Services

Planning Report

Database:	EDM 5000.1 US Multi Users DB	Local Co-ordinate Reference:	Well 8510E-25 D36 496
Company:	EnCana Oil & Gas (USA) Inc	TVD Reference:	KBE @ 8324.0ft (Original Well Elev)
Project:	Story Gulch	MD Reference:	KBE @ 8324.0ft (Original Well Elev)
Site:	S36-T4S-R96W (D36 496)	North Reference:	True
Well:	8510E-25 D36 496	Survey Calculation Method:	Minimum Curvature
Wellbore:	DD		
Design:	Plan #1		

Planned Survey

Measured Depth (ft)	Inclination (°)	Azimuth (°)	Vertical Depth (ft)	+N/-S (ft)	+E/-W (ft)	Vertical Section (ft)	Dogleg Rate (°/100ft)	Build Rate (°/100ft)	Comments / Formations
0.0	0.00	0.00	0.0	0.0	0.0	0.0	0.00	0.00	
100.0	0.00	0.00	100.0	0.0	0.0	0.0	0.00	0.00	
200.0	0.00	0.00	200.0	0.0	0.0	0.0	0.00	0.00	KOP @ 200' MD
300.0	3.00	49.79	300.0	1.7	2.0	2.6	3.00	3.00	
400.0	6.00	49.79	399.6	6.8	8.0	10.5	3.00	3.00	
500.0	9.00	49.79	498.8	15.2	18.0	23.5	3.00	3.00	
600.0	12.00	49.79	597.1	26.9	31.9	41.7	3.00	3.00	
700.0	15.00	49.79	694.3	42.0	49.7	65.1	3.00	3.00	
800.0	18.00	49.79	790.2	60.3	71.4	93.5	3.00	3.00	
900.0	21.00	49.79	884.4	81.9	96.9	126.9	3.00	3.00	
935.1	22.05	49.79	917.1	90.2	106.7	139.7	3.00	3.00	EOB; Inc=22.05°
1,000.0	22.05	49.79	977.2	105.9	125.3	164.1	0.00	0.00	
1,100.0	22.05	49.79	1,069.9	130.2	154.0	201.6	0.00	0.00	
1,200.0	22.05	49.79	1,162.6	154.4	182.7	239.2	0.00	0.00	
1,295.4	22.05	49.79	1,251.0	177.5	210.0	275.0	0.00	0.00	A_GROOVE (TVD)
1,300.0	22.05	49.79	1,255.3	178.7	211.3	276.7	0.00	0.00	
1,400.0	22.05	49.79	1,348.0	202.9	240.0	314.3	0.00	0.00	
1,500.0	22.05	49.79	1,440.7	227.1	268.7	351.8	0.00	0.00	
1,600.0	22.05	49.79	1,533.3	251.4	297.4	389.4	0.00	0.00	
1,700.0	22.05	49.79	1,626.0	275.6	326.0	426.9	0.00	0.00	
1,800.0	22.05	49.79	1,718.7	299.9	354.7	464.5	0.00	0.00	
1,900.0	22.05	49.79	1,811.4	324.1	383.4	502.0	0.00	0.00	
2,000.0	22.05	49.79	1,904.1	348.3	412.0	539.6	0.00	0.00	
2,100.0	22.05	49.79	1,996.8	372.6	440.7	577.1	0.00	0.00	
2,200.0	22.05	49.79	2,089.4	396.8	469.4	614.6	0.00	0.00	
2,300.0	22.05	49.79	2,182.1	421.1	498.1	652.2	0.00	0.00	
2,400.0	22.05	49.79	2,274.8	445.3	526.7	689.7	0.00	0.00	
2,500.0	22.05	49.79	2,367.5	469.5	555.4	727.3	0.00	0.00	
2,600.0	22.05	49.79	2,460.2	493.8	584.1	764.8	0.00	0.00	
2,607.4	22.05	49.79	2,467.0	495.6	586.2	767.6	0.00	0.00	GARDEN_GULCH / L-1 (TVD)
2,700.0	22.05	49.79	2,552.9	518.0	612.8	802.4	0.00	0.00	
2,800.0	22.05	49.79	2,645.5	542.3	641.4	839.9	0.00	0.00	
2,900.0	22.05	49.79	2,738.2	566.5	670.1	877.5	0.00	0.00	
3,000.0	22.05	49.79	2,830.9	590.7	698.8	915.0	0.00	0.00	
3,100.0	22.05	49.79	2,923.6	615.0	727.4	952.6	0.00	0.00	
3,200.0	22.05	49.79	3,016.3	639.2	756.1	990.1	0.00	0.00	
3,300.0	22.05	49.79	3,109.0	663.5	784.8	1,027.6	0.00	0.00	
3,400.0	22.05	49.79	3,201.7	687.7	813.5	1,065.2	0.00	0.00	
3,500.0	22.05	49.79	3,294.3	711.9	842.1	1,102.7	0.00	0.00	
3,600.0	22.05	49.79	3,387.0	736.2	870.8	1,140.3	0.00	0.00	
3,700.0	22.05	49.79	3,479.7	760.4	899.5	1,177.8	0.00	0.00	
3,800.0	22.05	49.79	3,572.4	784.6	928.2	1,215.4	0.00	0.00	
3,900.0	22.05	49.79	3,665.1	808.9	956.8	1,252.9	0.00	0.00	
4,000.0	22.05	49.79	3,757.8	833.1	985.5	1,290.5	0.00	0.00	
4,100.0	22.05	49.79	3,850.4	857.4	1,014.2	1,328.0	0.00	0.00	
4,200.0	22.05	49.79	3,943.1	881.6	1,042.8	1,365.6	0.00	0.00	
4,300.0	22.05	49.79	4,035.8	905.8	1,071.5	1,403.1	0.00	0.00	
4,400.0	22.05	49.79	4,128.5	930.1	1,100.2	1,440.6	0.00	0.00	
4,500.0	22.05	49.79	4,221.2	954.3	1,128.9	1,478.2	0.00	0.00	
4,600.0	22.05	49.79	4,313.9	978.6	1,157.5	1,515.7	0.00	0.00	
4,700.0	22.05	49.79	4,406.5	1,002.8	1,186.2	1,553.3	0.00	0.00	
4,800.0	22.05	49.79	4,499.2	1,027.0	1,214.9	1,590.8	0.00	0.00	

Cathedral Energy Services

Planning Report

Database:	EDM 5000.1 US Multi Users DB	Local Co-ordinate Reference:	Well 8510E-25 D36 496
Company:	EnCana Oil & Gas (USA) Inc	TVD Reference:	KBE @ 8324.0ft (Original Well Elev)
Project:	Story Gulch	MD Reference:	KBE @ 8324.0ft (Original Well Elev)
Site:	S36-T4S-R96W (D36 496)	North Reference:	True
Well:	8510E-25 D36 496	Survey Calculation Method:	Minimum Curvature
Wellbore:	DD		
Design:	Plan #1		

Planned Survey

Measured Depth (ft)	Inclination (°)	Azimuth (°)	Vertical Depth (ft)	+N/-S (ft)	+E/-W (ft)	Vertical Section (ft)	Dogleg Rate (°/100ft)	Build Rate (°/100ft)	Comments / Formations
4,900.0	22.05	49.79	4,591.9	1,051.3	1,243.5	1,628.4	0.00	0.00	
5,000.0	22.05	49.79	4,684.6	1,075.5	1,272.2	1,665.9	0.00	0.00	
5,100.0	22.05	49.79	4,777.3	1,099.8	1,300.9	1,703.5	0.00	0.00	
5,200.0	22.05	49.79	4,870.0	1,124.0	1,329.6	1,741.0	0.00	0.00	
5,300.0	22.05	49.79	4,962.6	1,148.2	1,358.2	1,778.6	0.00	0.00	
5,400.0	22.05	49.79	5,055.3	1,172.5	1,386.9	1,816.1	0.00	0.00	
5,500.0	22.05	49.79	5,148.0	1,196.7	1,415.6	1,853.7	0.00	0.00	
5,600.0	22.05	49.79	5,240.7	1,221.0	1,444.3	1,891.2	0.00	0.00	
5,700.0	22.05	49.79	5,333.4	1,245.2	1,472.9	1,928.7	0.00	0.00	
5,800.0	22.05	49.79	5,426.1	1,269.4	1,501.6	1,966.3	0.00	0.00	
5,900.0	22.05	49.79	5,518.8	1,293.7	1,530.3	2,003.8	0.00	0.00	
6,000.0	22.05	49.79	5,611.4	1,317.9	1,558.9	2,041.4	0.00	0.00	
6,100.0	22.05	49.79	5,704.1	1,342.2	1,587.6	2,078.9	0.00	0.00	
6,200.0	22.05	49.79	5,796.8	1,366.4	1,616.3	2,116.5	0.00	0.00	
6,300.0	22.05	49.79	5,889.5	1,390.6	1,645.0	2,154.0	0.00	0.00	
6,313.5	22.05	49.79	5,902.0	1,393.9	1,648.8	2,159.1	0.00	0.00	WASATCH_G (TVD)
6,400.0	22.05	49.79	5,982.2	1,414.9	1,673.6	2,191.6	0.00	0.00	
6,500.0	22.05	49.79	6,074.9	1,439.1	1,702.3	2,229.1	0.00	0.00	
6,600.0	22.05	49.79	6,167.5	1,463.4	1,731.0	2,266.7	0.00	0.00	
6,700.0	22.05	49.79	6,260.2	1,487.6	1,759.7	2,304.2	0.00	0.00	
6,800.0	22.05	49.79	6,352.9	1,511.8	1,788.3	2,341.7	0.00	0.00	
6,900.0	22.05	49.79	6,445.6	1,536.1	1,817.0	2,379.3	0.00	0.00	
7,000.0	22.05	49.79	6,538.3	1,560.3	1,845.7	2,416.8	0.00	0.00	
7,100.0	22.05	49.79	6,631.0	1,584.6	1,874.3	2,454.4	0.00	0.00	
7,200.0	22.05	49.79	6,723.6	1,608.8	1,903.0	2,491.9	0.00	0.00	
7,300.0	22.05	49.79	6,816.3	1,633.0	1,931.7	2,529.5	0.00	0.00	
7,400.0	22.05	49.79	6,909.0	1,657.3	1,960.4	2,567.0	0.00	0.00	
7,500.0	22.05	49.79	7,001.7	1,681.5	1,989.0	2,604.6	0.00	0.00	
7,600.0	22.05	49.79	7,094.4	1,705.8	2,017.7	2,642.1	0.00	0.00	
7,700.0	22.05	49.79	7,187.1	1,730.0	2,046.4	2,679.7	0.00	0.00	
7,800.0	22.05	49.79	7,279.7	1,754.2	2,075.1	2,717.2	0.00	0.00	
7,900.0	22.05	49.79	7,372.4	1,778.5	2,103.7	2,754.7	0.00	0.00	
8,000.0	22.05	49.79	7,465.1	1,802.7	2,132.4	2,792.3	0.00	0.00	
8,063.5	22.05	49.79	7,523.9	1,818.1	2,150.6	2,816.1	0.00	0.00	Start Drop -3.00
8,100.0	20.96	49.79	7,557.9	1,826.7	2,160.8	2,829.5	3.00	-3.00	
8,200.0	17.96	49.79	7,652.2	1,848.2	2,186.3	2,862.8	3.00	-3.00	
8,300.0	14.96	49.79	7,748.1	1,866.5	2,207.9	2,891.1	3.00	-3.00	
8,400.0	11.96	49.79	7,845.3	1,881.6	2,225.7	2,914.4	3.00	-3.00	
8,500.0	8.96	49.79	7,943.7	1,893.3	2,239.5	2,932.6	3.00	-3.00	
8,600.0	5.96	49.79	8,042.8	1,901.6	2,249.4	2,945.5	3.00	-3.00	
8,700.0	2.96	49.79	8,142.5	1,906.7	2,255.4	2,953.3	3.00	-3.00	
8,758.5	1.20	49.79	8,201.0	1,908.0	2,257.0	2,955.4	3.00	-3.00	WILLIAMS_FORK (TVD)
8,798.5	0.00	0.00	8,241.0	1,908.3	2,257.3	2,955.8	3.00	-3.00	EOD; inc=0° - TOG (TVD) - 8510E-25 D36 496
8,800.0	0.00	239.59	8,242.5	1,908.3	2,257.3	2,955.8	0.25	0.25	
8,900.0	0.25	239.59	8,342.5	1,908.2	2,257.1	2,955.6	0.25	0.25	
8,917.3	0.30	239.59	8,359.7	1,908.1	2,257.0	2,955.5	0.25	0.25	
9,000.0	0.30	239.59	8,442.5	1,907.9	2,256.7	2,955.1	0.00	0.00	
9,100.0	0.30	239.59	8,542.5	1,907.7	2,256.2	2,954.6	0.00	0.00	
9,200.0	0.30	239.59	8,642.5	1,907.4	2,255.8	2,954.1	0.00	0.00	
9,300.0	0.30	239.59	8,742.5	1,907.1	2,255.3	2,953.6	0.00	0.00	
9,400.0	0.30	239.59	8,842.5	1,906.9	2,254.9	2,953.1	0.00	0.00	
9,500.0	0.30	239.59	8,942.4	1,906.6	2,254.4	2,952.6	0.00	0.00	

Cathedral Energy Services

Planning Report

Database:	EDM 5000.1 US Multi Users DB	Local Co-ordinate Reference:	Well 8510E-25 D36 496
Company:	EnCana Oil & Gas (USA) Inc	TVD Reference:	KBE @ 8324.0ft (Original Well Elev)
Project:	Story Gulch	MD Reference:	KBE @ 8324.0ft (Original Well Elev)
Site:	S36-T4S-R96W (D36 496)	North Reference:	True
Well:	8510E-25 D36 496	Survey Calculation Method:	Minimum Curvature
Wellbore:	DD		
Design:	Plan #1		

Planned Survey									
Measured Depth (ft)	Inclination (°)	Azimuth (°)	Vertical Depth (ft)	+N/-S (ft)	+E/-W (ft)	Vertical Section (ft)	Dogleg Rate (°/100ft)	Build Rate (°/100ft)	Comments / Formations
9,600.0	0.30	239.59	9,042.4	1,906.4	2,254.0	2,952.1	0.00	0.00	
9,700.0	0.30	239.59	9,142.4	1,906.1	2,253.5	2,951.5	0.00	0.00	
9,800.0	0.30	239.59	9,242.4	1,905.8	2,253.1	2,951.0	0.00	0.00	
9,900.0	0.30	239.59	9,342.4	1,905.6	2,252.6	2,950.5	0.00	0.00	
10,000.0	0.30	239.59	9,442.4	1,905.3	2,252.2	2,950.0	0.00	0.00	
10,100.0	0.30	239.59	9,542.4	1,905.0	2,251.7	2,949.5	0.00	0.00	
10,200.0	0.30	239.59	9,642.4	1,904.8	2,251.3	2,949.0	0.00	0.00	
10,300.0	0.30	239.59	9,742.4	1,904.5	2,250.9	2,948.5	0.00	0.00	
10,400.0	0.30	239.59	9,842.4	1,904.3	2,250.4	2,948.0	0.00	0.00	
10,500.0	0.30	239.59	9,942.4	1,904.0	2,250.0	2,947.5	0.00	0.00	
10,600.0	0.30	239.59	10,042.4	1,903.7	2,249.5	2,946.9	0.00	0.00	
10,700.0	0.30	239.59	10,142.4	1,903.5	2,249.1	2,946.4	0.00	0.00	
10,800.0	0.30	239.59	10,242.4	1,903.2	2,248.6	2,945.9	0.00	0.00	
10,900.0	0.30	239.59	10,342.4	1,902.9	2,248.2	2,945.4	0.00	0.00	
11,000.0	0.30	239.59	10,442.4	1,902.7	2,247.7	2,944.9	0.00	0.00	
11,100.0	0.30	239.59	10,542.4	1,902.4	2,247.3	2,944.4	0.00	0.00	
11,200.0	0.30	239.59	10,642.4	1,902.2	2,246.8	2,943.9	0.00	0.00	
11,300.0	0.30	239.59	10,742.4	1,901.9	2,246.4	2,943.4	0.00	0.00	
11,400.0	0.30	239.59	10,842.4	1,901.6	2,245.9	2,942.9	0.00	0.00	
11,500.0	0.30	239.59	10,942.4	1,901.4	2,245.5	2,942.4	0.00	0.00	
11,600.0	0.30	239.59	11,042.4	1,901.1	2,245.0	2,941.8	0.00	0.00	
11,700.0	0.30	239.59	11,142.4	1,900.8	2,244.6	2,941.3	0.00	0.00	
11,800.0	0.30	239.59	11,242.4	1,900.6	2,244.2	2,940.8	0.00	0.00	
11,900.0	0.30	239.59	11,342.4	1,900.3	2,243.7	2,940.3	0.00	0.00	
12,000.0	0.30	239.59	11,442.4	1,900.1	2,243.3	2,939.8	0.00	0.00	
12,100.0	0.30	239.59	11,542.4	1,899.8	2,242.8	2,939.3	0.00	0.00	
12,200.0	0.30	239.59	11,642.4	1,899.5	2,242.4	2,938.8	0.00	0.00	
12,300.0	0.30	239.59	11,742.4	1,899.3	2,241.9	2,938.3	0.00	0.00	
12,400.0	0.30	239.59	11,842.4	1,899.0	2,241.5	2,937.8	0.00	0.00	
12,500.0	0.30	239.59	11,942.4	1,898.7	2,241.0	2,937.2	0.00	0.00	
12,600.0	0.30	239.59	12,042.4	1,898.5	2,240.6	2,936.7	0.00	0.00	
12,665.6	0.30	239.59	12,108.0	1,898.3	2,240.3	2,936.4	0.00	0.00	ROLLINS (TVD) - 8510E-25 D36 496 BHL
12,700.0	0.30	239.59	12,142.4	1,898.2	2,240.1	2,936.2	0.00	0.00	
12,765.6	0.30	239.59	12,208.0	1,898.1	2,239.8	2,935.9	0.00	0.00	Drillers TD @ 12765.6' MD
12,800.0	0.30	239.59	12,242.4	1,898.0	2,239.7	2,935.7	0.00	0.00	
12,900.0	0.30	239.59	12,342.4	1,897.7	2,239.2	2,935.2	0.00	0.00	
12,932.6	0.30	239.59	12,375.0	1,897.6	2,239.1	2,935.0	0.00	0.00	COZZETTE (TVD)
13,000.0	0.30	239.59	12,442.4	1,897.4	2,238.8	2,934.7	0.00	0.00	
13,017.6	0.30	239.59	12,460.0	1,897.4	2,238.7	2,934.6	0.00	0.00	LOWER_SEGO (TVD)
13,100.0	0.30	239.59	12,542.4	1,897.2	2,238.3	2,934.2	0.00	0.00	
13,172.6	0.30	239.59	12,615.0	1,897.0	2,238.0	2,933.8	0.00	0.00	CORCORAN (TVD)
13,200.0	0.30	239.59	12,642.4	1,896.9	2,237.9	2,933.7	0.00	0.00	
13,300.0	0.30	239.59	12,742.4	1,896.6	2,237.5	2,933.2	0.00	0.00	
13,395.6	0.30	239.59	12,838.0	1,896.4	2,237.0	2,932.7	0.00	0.00	SEGO (TVD)
13,400.0	0.30	239.59	12,842.4	1,896.4	2,237.0	2,932.7	0.00	0.00	
13,500.0	0.30	239.59	12,942.4	1,896.1	2,236.6	2,932.1	0.00	0.00	
13,600.0	0.30	239.59	13,042.4	1,895.9	2,236.1	2,931.6	0.00	0.00	
13,700.0	0.30	239.59	13,142.4	1,895.6	2,235.7	2,931.1	0.00	0.00	
13,765.6	0.30	239.59	13,208.0	1,895.4	2,235.4	2,930.8	0.00	0.00	Permit TD @ 13765.6' MD

Cathedral Energy Services

Planning Report

Database:	EDM 5000.1 US Multi Users DB	Local Co-ordinate Reference:	Well 8510E-25 D36 496
Company:	EnCana Oil & Gas (USA) Inc	TVD Reference:	KBE @ 8324.0ft (Original Well Elev)
Project:	Story Gulch	MD Reference:	KBE @ 8324.0ft (Original Well Elev)
Site:	S36-T4S-R96W (D36 496)	North Reference:	True
Well:	8510E-25 D36 496	Survey Calculation Method:	Minimum Curvature
Wellbore:	DD		
Design:	Plan #1		

Targets									
Target Name									
- hit/miss target	Dip Angle	Dip Dir.	TVD	+N/-S	+E/-W	Northing	Easting	Latitude	Longitude
- Shape	(°)	(°)	(ft)	(ft)	(ft)	(ft)	(ft)		
8510E-25 D36 496 TOG	0.00	0.00	8,241.0	1,908.3	2,257.3	1,679,667.71	2,264,063.98	39° 40' 13.45 N	108° 6' 52.93 W
- plan hits target center									
- Point									
8510E-25 D36 496 BHL	0.00	0.00	12,108.0	1,898.3	2,240.3	1,679,658.22	2,264,046.69	39° 40' 13.35 N	108° 6' 53.15 W
- plan hits target center									
- Rectangle (sides W30.0 H50.0 D0.0)									

Formations						
Measured Depth	Vertical Depth	Name	Lithology	Dip	Dip Direction	
(ft)	(ft)			(°)	(°)	
1,295.4	1,251.0	A_GROOVE (TVD)				
2,607.4	2,467.0	GARDEN_GULCH / L-1 (TVD)				
6,313.5	5,902.0	WASATCH_G (TVD)				
8,758.5	8,201.0	WILLIAMS_FORK (TVD)				
8,798.5	8,241.0	TOG (TVD)				
12,665.6	12,108.0	ROLLINS (TVD)				
12,932.6	12,375.0	COZZETTE (TVD)				
13,017.6	12,460.0	LOWER_SEGO (TVD)				
13,172.6	12,615.0	CORCORAN (TVD)				
13,395.6	12,838.0	SEGO (TVD)				

Plan Annotations				
Measured Depth	Vertical Depth	Local Coordinates		Comment
(ft)	(ft)	+N/-S (ft)	+E/-W (ft)	
200.0	200.0	0.0	0.0	KOP @ 200' MD
935.1	917.1	90.2	106.7	EOB; Inc=22.05°
8,063.5	7,523.9	1,818.1	2,150.6	Start Drop -3.00
8,798.5	8,241.0	1,908.3	2,257.3	EOD; inc=0°
12,765.6	12,208.0	1,908.1	2,257.0	Drillers TD @ 12765.6' MD
13,765.6	13,208.0	1,898.3	2,240.3	Permit TD @ 13765.6' MD