

T4S, R96W, 6th P.M.

Encana OIL & GAS (USA) INC.

Well location, SG 8510E-25 D36 496 (SURFACE LOCATION), located as shown in Lot 4 of Section 36, T4S, R96W, 6th P.M., Garfield County, Colorado.

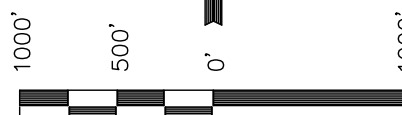
BASIS OF ELEVATION

BENCH MARK (H79) LOCATED IN THE NE 1/4 OF SECTION 35, T4S, R98W, 6th P.M. TAKEN FROM THE BULL FORK QUADRANGLE, COLORADO, 7.5 MINUTE SERIES (TOPOGRAPHICAL MAP) PUBLISHED BY THE UNITED STATES DEPARTMENT OF THE INTERIOR, GEOLOGICAL SURVEY. SAID ELEVATION IS MARKED AS BEING 8535 FEET.

BASIS OF BEARINGS

BASIS OF BEARINGS IS A G.P.S. OBSERVATION.

Sheet 100 of 11



SCALE

CERTIFICATE

THIS IS TO CERTIFY THAT THE ABOVE PLAT WAS PREPARED FROM FIELD NOTES OF ACTUAL SURVEYS MADE BY ME OR UNDER MY SUPERVISION AND THAT THE SAME ARE TRUE AND CORRECT TO THE BEST OF MY KNOWLEDGE AND BELIEF.

REGISTERED LAND SURVEYOR
REGISTRATION NO. 17492
STATE OF COLORADO

Revised: 05-18-11 D.R.B.

UINTAH ENGINEERING & LAND SURVEYING
85 SOUTH 200 EAST - VERNAL, UTAH 84078
(435) 789-1017

1953 Brass Cap
0.8' High, Mound
of Stones
Lat: 39.666042°
Long: 108.126567°

1953 Brass Cap
0.6' High, Steel
Post
Lat: 39.666053°
Long: 108.117142°

1953 Brass Cap
0.4' High
Lat: 39.666064°
Long: 108.107683°

S89°46'52"W - 2653.74' (Meas.)

S89°44'26"W - 2664.30' (Meas.)

COC065557

SG 8510E-25 D36 496
Elev. Ungraded Ground = 8303.6'
Elev. Graded Ground = 8290.6'

Lot 4

Lot 3

Lot 2

Lot 1

COC061138

1953 Brass Cap
0.5' High, "T"
Post
Lat: 39.658806°
Long: 108.126564°

1953 Brass Cap 0.3'
High, Mound of Stones
Lat: 39.658633°
Long: 108.126569°

36

NOTE:
THE PROPOSED BOTTOM HOLE FOR THIS WELL IS
LOCATED IN THE NW 1/4 SE 1/4 OF SECTION
25, T4S, R96W, 6th P.M. AT A DISTANCE OF
1574' FSL 1997' FEL. IT BEARS N49°34'14"E
2937.57' FROM THE PROPOSED WELL HEAD.

COC061138

1953 Brass Cap
0.4' High, "T" Post
Lat: 39.658806°
Long: 108.107661°

Lot 5

Lot 6

COC065556

1953 Brass Cap
0.8' High, N-E-W
Fenceline, 3" PVC
Post
Lat: 39.651453°
Long: 108.126700°

1953 Brass Cap
1.1' High, E-W
Fenceline, Steel
Post
Lat: 39.651533°
Long: 108.117317°

1953 Brass Cap
0.5' High, E-W
Fenceline
Lat: 39.651553°
Long: 108.107675°

T4S
T5S

S89°13'57"W - 2643.54' (Meas.)

S89°40'37"W - 2715.77' (Meas.)

LEGEND:

└─ = 90° SYMBOL

● = PROPOSED WELL HEAD.

▲ = SECTION CORNERS LOCATED.

SEE SHEET 7A FOR EXISTING
IMPROVEMENT WITHIN 400' OF THE
PROPOSED WELL DISTURBANCE

LINE TABLE

LINE	BEARING	LENGTH
L1	S00°52'27"W	62.59'

PDOP = 1.5

NAD 83 (SURFACE LOCATION)

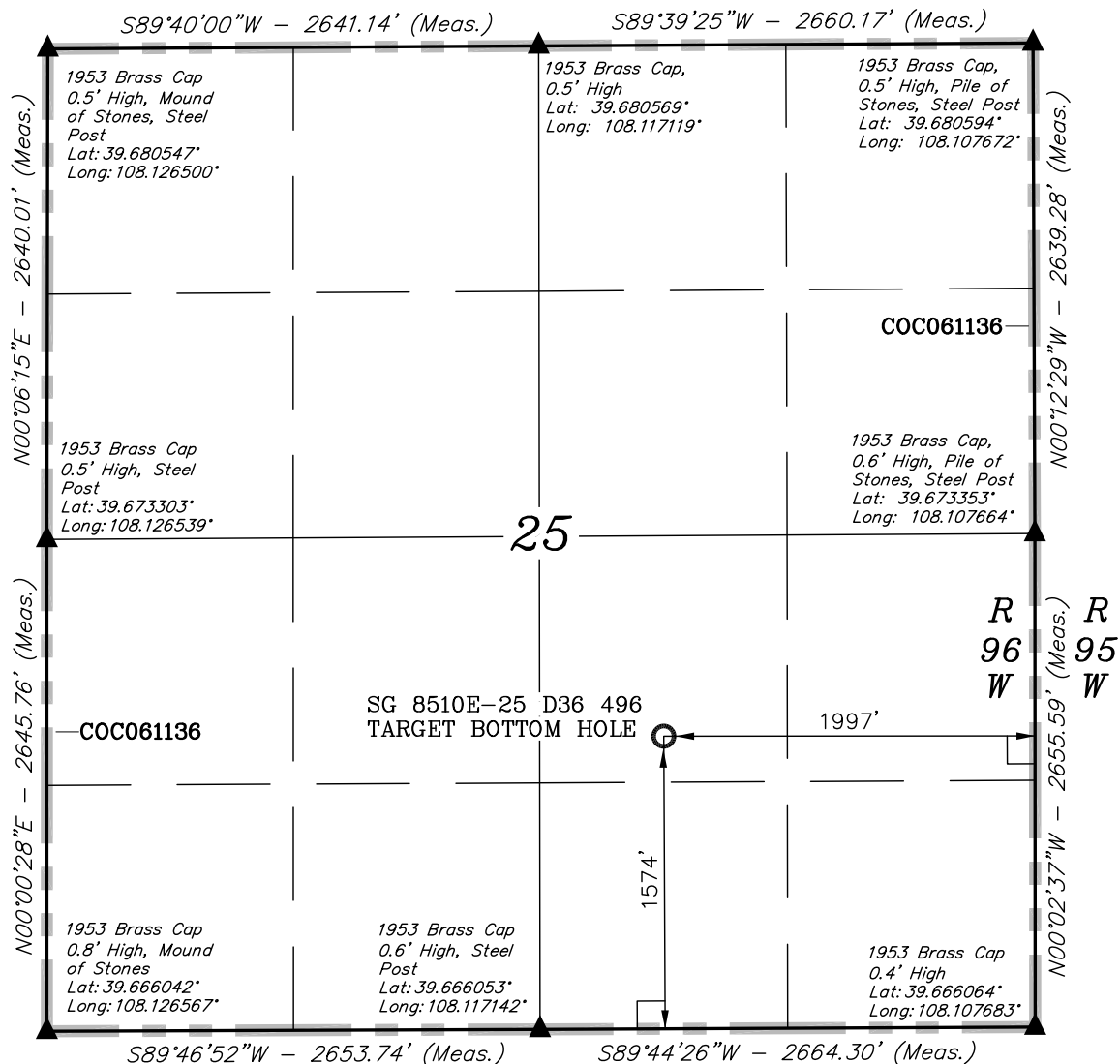
LATITUDE = 39°39'54.59" (39.665164)
LONGITUDE = 108°07'21.80" (108.122722)

NAD 27 (SURFACE LOCATION)

LATITUDE = 39°39'54.68" (39.665189)
LONGITUDE = 108°07'19.51" (108.122086)

SCALE 1" = 1000'	DATE SURVEYED: 08-01-09	DATE DRAWN: 07-26-10
PARTY D.K. B.H. D.R.B.	REFERENCES G.L.O. PLAT	FILE Encana OIL & GAS (USA) INC.
WEATHER COOL		

T4S, R96W, 6th P.M.



NOTE:
THE PROPOSED WELL HEAD IS LOCATED IN
LOT 4 OF SECTION 36, T4S, R96W, 6th P.M.
AT A DISTANCE OF 322' FNL 1083' FWL. IT
BEARS S49°34'14\"W 2937.57' FROM THE
TARGET BOTTOM HOLE.

LEGEND:

- └─┘ = 90° SYMBOL
- = PROPOSED WELL HEAD.
- ▲ = SECTION CORNERS LOCATED.

NAD 83 (TARGET BOTTOM HOLE)	
LATITUDE	= 39°40'13.35" (39.670375)
LONGITUDE	= 108°06'53.15" (108.114764)
NAD 27 (TARGET BOTTOM HOLE)	
LATITUDE	= 39°40'13.44" (39.670400)
LONGITUDE	= 108°06'50.86" (108.114128)

Encana OIL & GAS (USA) INC.

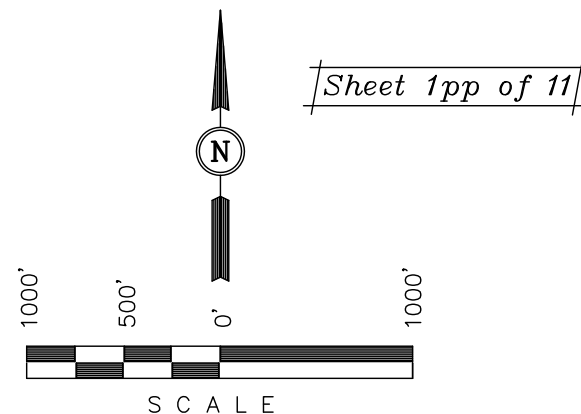
Well location, SG 8510E-25 D36 496 (TARGET
BOTTOM HOLE), located as shown in the NE
1/4 SW 1/4 of Section 25, T4S, R96W, 6th
P.M., Garfield County, Colorado.

BASIS OF ELEVATION

BENCH MARK (H79) LOCATED IN THE NE 1/4 OF SECTION
35, T4S, R98W, 6th P.M. TAKEN FROM THE BULL FORK
QUADRANGLE, COLORADO, 7.5 MINUTE SERIES (TOPO
GRAPHICAL MAP) PUBLISHED BY THE UNITED STATES
DEPARTMENT OF THE INTERIOR, GEOLOGICAL SURVEY.
SAID ELEVATION IS MARKED AS BEING 8535 FEET.

BASIS OF BEARINGS

BASIS OF BEARINGS IS A G.P.S. OBSERVATION.



Sheet 1pp of 11

CERTIFICATE

THIS IS TO CERTIFY THAT THE ABOVE PLAT WAS PREPARED FROM
FIELD NOTES OF ACTUAL SURVEYS MADE BY ME OR UNDER MY
SUPERVISION AND THAT THE SAME ARE TRUE AND CORRECT TO THE
BEST OF MY KNOWLEDGE AND BELIEF.

REGISTERED LAND SURVEYOR
REGISTRATION NO. 17492
STATE OF COLORADO

Revised: 05-18-11 D.R.B.

<p>UINTAH ENGINEERING & LAND SURVEYING</p> <p>85 SOUTH 200 EAST - VERNAL, UTAH 84078</p> <p>(435) 789-1017</p>		
SCALE	1" = 1000'	DATE SURVEYED: 08-01-09
PARTY	D.K. B.H. D.R.B.	DATE DRAWN: 07-26-10
WEATHER	COOL	REFERENCES G.L.O. PLAT
		FILE Encana OIL & GAS (USA) INC.