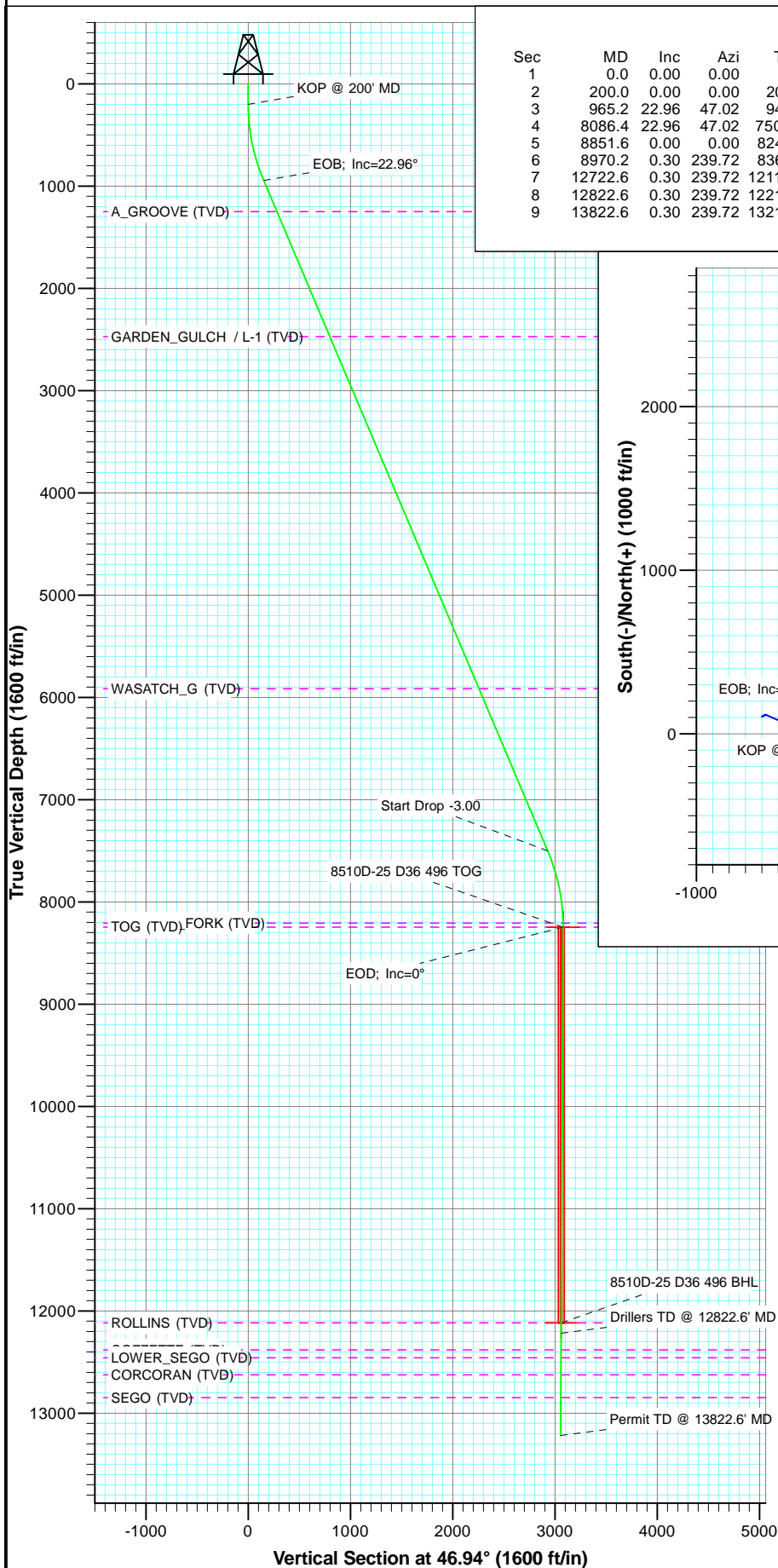


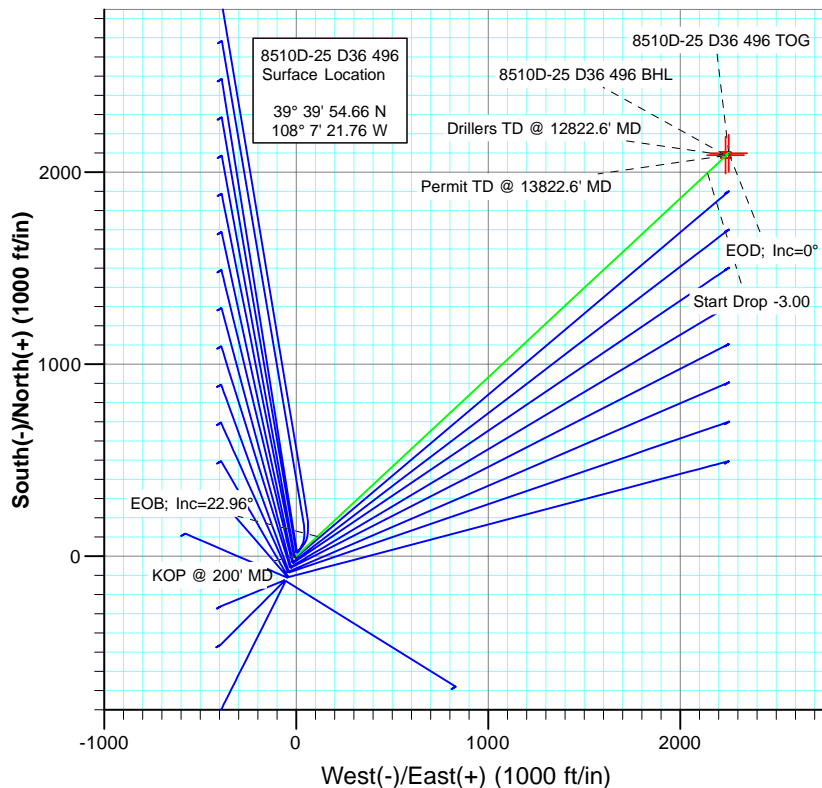


Project: Story Gulch  
Site: S36-T4S-R96W (D36 496)  
Well: 8510D-25 D36 496  
Wellbore: DD  
Plan: Plan #1



#### SECTION DETAILS

Sec	MD	Inc	Azi	TVD	+N/-S	+E/-W	Dleg	TFace	Vsect	Target
1	0.0	0.00	0.00	0.0	0.0	0.0	0.00	0.00	0.0	
2	200.0	0.00	0.00	200.0	0.0	0.0	0.00	0.00	0.0	
3	965.2	22.96	47.02	944.9	103.1	110.7	3.00	47.02	151.2	
4	8086.4	22.96	47.02	7502.1	1996.4	2142.7	0.00	0.00	2928.6	
5	8851.6	0.00	0.00	8247.0	2099.5	2253.4	3.00	180.00	3079.9	8510D-25 D36 496 TOG
6	8970.2	0.30	239.72	8365.7	2099.3	2253.1	0.25	239.72	3079.6	
7	12722.6	0.30	239.72	12118.0	2089.5	2236.4	0.00	0.00	3060.6	8510D-25 D36 496 BHL
8	12822.6	0.30	239.72	12218.0	2089.3	2235.9	0.00	0.00	3060.1	
9	13822.6	0.30	239.72	13218.0	2086.7	2231.4	0.00	0.00	3055.1	



TVDPath	MDPath	Formation
1251.0	1297.6	A_GROOVE (TVD)
2472.0	2623.6	GARDEN_GULCH / L-1 (TVD)
5916.0	6363.8	WASATCH_G (TVD)
8207.0	8811.6	WILLIAMS_FORK (TVD)
8247.0	8851.6	TOG (TVD)
12118.0	12722.6	ROLLINS (TVD)
12382.0	12986.6	COZZETTE (TVD)
12458.0	13062.6	LOWER_SEGO (TVD)
12624.0	13228.6	CORCORAN (TVD)
12847.0	13451.6	SEGO (TVD)



Azimuths to True North  
Magnetic North: 10.44°

Magnetic Field  
Strength: 52310.9nT  
Dip Angle: 65.86°  
Date: 5/31/2011  
Model: IGRF2010

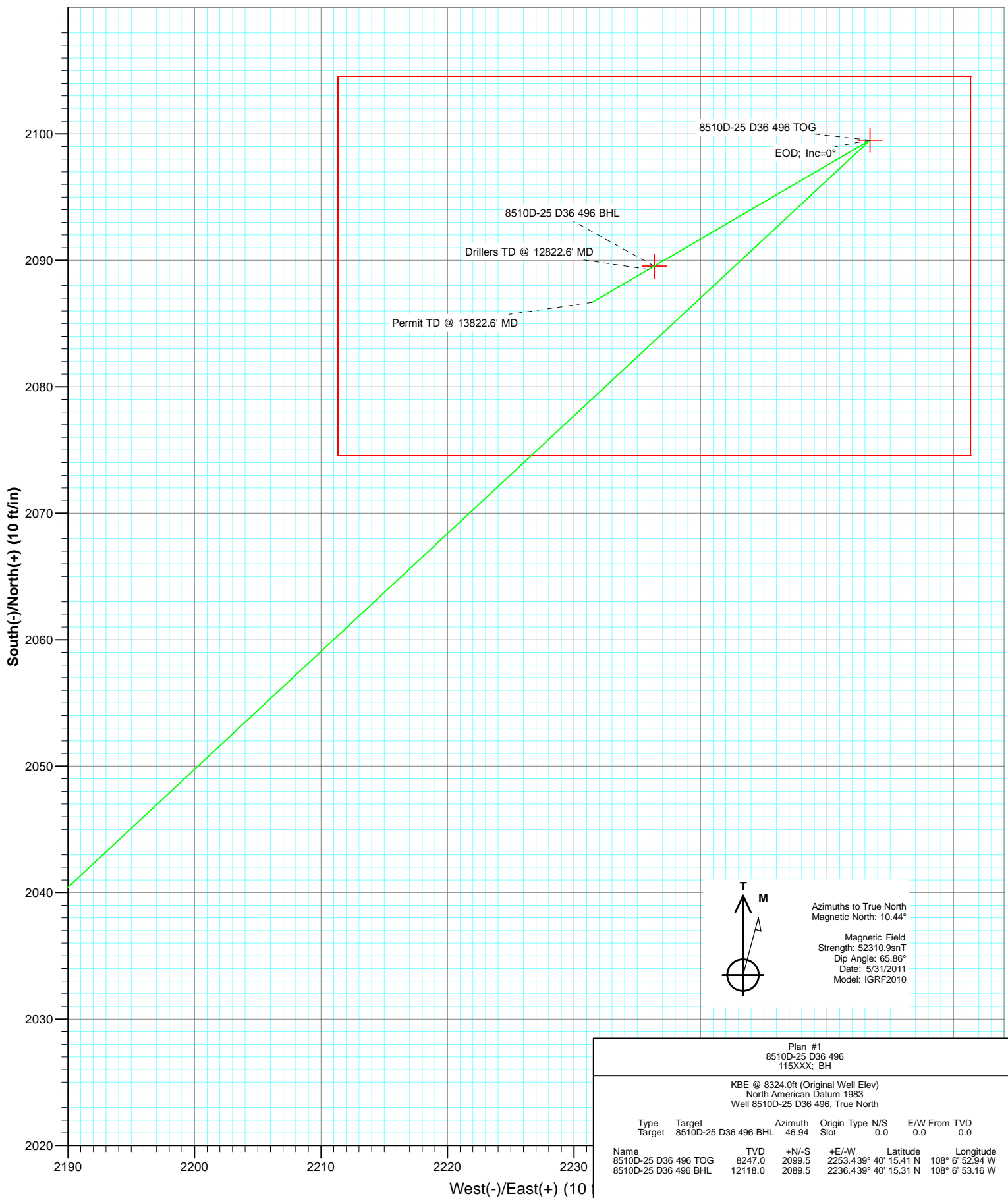
Plan #1  
8510D-25 D36 496  
115XXX; BH

KBE @ 8324.0ft (Original Well Elev)  
North American Datum 1983  
Well 8510D-25 D36 496, True North

Type	Target	Target	MD	Azimuth	Origin	Type	N/S	E/W	From	TVD
Name	8510D-25 D36 496 TOG	TVD	8247.0	+N/-S	+E/-W	Latitude				Longitude
	8510D-25 D36 496 BHL	TVD	12118.0	2099.5	2253.439° 40'	15.41 N	108° 6'	52.94 W		
				2089.5	2236.439° 40'	15.31 N	108° 6'	53.16 W		



Project: Story Gulch  
 Site: S36-T4S-R96W (D36 496)  
 Well: 8510D-25 D36 496  
 Wellbore: DD  
 Plan: Plan #1



Plan #1							
8510D-25 D36 496							
115XXX; BH							
KBE @ 8324.0ft (Original Well Elev)							
North American Datum 1983							
Well 8510D-25 D36 496, True North							
Type	Target	Target	Azimuth	Origin	Type	N/S	E/W From TVD
Target	8510D-25 D36 496 BHL		46.94	Slot		0.0	0.0
Name	8510D-25 D36 496 TOG	TVD	+N/-S	+E/-W	Latitude	Longitude	
	8510D-25 D36 496 BHL	12118.0	2099.5	2253.439° 40'	15.41 N	108° 6' 52.94 W	
			2089.5	2236.439° 40'	15.31 N	108° 6' 53.16 W	

# Cathedral Energy Services

## Planning Report

<b>Database:</b>	EDM 5000.1 US Multi Users DB	<b>Local Co-ordinate Reference:</b>	Well 8510D-25 D36 496
<b>Company:</b>	EnCana Oil & Gas (USA) Inc	<b>TVD Reference:</b>	KBE @ 8324.0ft (Original Well Elev)
<b>Project:</b>	Story Gulch	<b>MD Reference:</b>	KBE @ 8324.0ft (Original Well Elev)
<b>Site:</b>	S36-T4S-R96W (D36 496)	<b>North Reference:</b>	True
<b>Well:</b>	8510D-25 D36 496	<b>Survey Calculation Method:</b>	Minimum Curvature
<b>Wellbore:</b>	DD		
<b>Design:</b>	Plan #1		

<b>Project</b>	Story Gulch		
<b>Map System:</b>	US State Plane 1983	<b>System Datum:</b>	Mean Sea Level
<b>Geo Datum:</b>	North American Datum 1983		
<b>Map Zone:</b>	Colorado Central Zone		

Site		S36-T4S-R96W (D36 496)			
Site Position:		Northing:	1,677,676.10 ft	Latitude:	39° 39' 53.09 N
From:	Lat/Long	Easting:	2,261,675.01 ft	Longitude:	108° 7' 22.74 W
Position Uncertainty:	0.0 ft	Slot Radius:	13.200 in	Grid Convergence:	-1.65 °

Well	8510D-25 D36 496					
Well Position	+N/-S	0.0 ft	Northing:	1,677,832.36 ft	Latitude:	39° 39' 54.66 N
	+E/-W	0.0 ft	Easting:	2,261,755.87 ft	Longitude:	108° 7' 21.76 W
Position Uncertainty		0.0 ft	Wellhead Elevation:	ft	Ground Level:	8,302.0 ft

<b>Wellbore</b>	DD				
<b>Magnetics</b>	<b>Model Name</b>	<b>Sample Date</b>	<b>Declination (°)</b>	<b>Dip Angle (°)</b>	<b>Field Strength (nT)</b>
	IGRF2010	5/31/2011	10.44	65.86	52,311

<b>Design</b>	Plan #1				
<b>Audit Notes:</b>					
<b>Version:</b>	<b>Phase:</b>	PLAN		<b>Tie On Depth:</b>	0.0
<b>Vertical Section:</b>	<b>Depth From (TVD) (ft)</b>	<b>+N/-S (ft)</b>	<b>+E/-W (ft)</b>	<b>Direction (°)</b>	
	0.0	0.0	0.0	46.94	

<b>Plan Sections</b>										
Measured Depth (ft)	Inclination (°)	Azimuth (°)	Vertical Depth (ft)	+N/-S (ft)	+E/-W (ft)	Dogleg Rate (°/100ft)	Build Rate (°/100ft)	Turn Rate (°/100ft)	TFO (°)	Target
0.0	0.00	0.00	0.0	0.0	0.0	0.00	0.00	0.00	0.00	
200.0	0.00	0.00	200.0	0.0	0.0	0.00	0.00	0.00	0.00	
965.2	22.96	47.02	944.9	103.1	110.7	3.00	3.00	0.00	47.02	
8,086.4	22.96	47.02	7,502.1	1,996.4	2,142.7	0.00	0.00	0.00	0.00	
8,851.6	0.00	0.00	8,247.0	2,099.5	2,253.4	3.00	-3.00	0.00	180.00	8510D-25 D36 496 TC
8,970.2	0.30	239.72	8,365.7	2,099.3	2,253.1	0.25	0.25	-101.37	239.72	
12,722.6	0.30	239.72	12,118.0	2,089.5	2,236.4	0.00	0.00	0.00	0.00	8510D-25 D36 496 BI
12,822.6	0.30	239.72	12,218.0	2,089.3	2,235.9	0.00	0.00	0.00	0.00	
13,822.6	0.30	239.72	13,218.0	2,086.7	2,231.4	0.00	0.00	0.00	0.00	

# Cathedral Energy Services

## Planning Report

<b>Database:</b>	EDM 5000.1 US Multi Users DB	<b>Local Co-ordinate Reference:</b>	Well 8510D-25 D36 496
<b>Company:</b>	EnCana Oil & Gas (USA) Inc	<b>TVD Reference:</b>	KBE @ 8324.0ft (Original Well Elev)
<b>Project:</b>	Story Gulch	<b>MD Reference:</b>	KBE @ 8324.0ft (Original Well Elev)
<b>Site:</b>	S36-T4S-R96W (D36 496)	<b>North Reference:</b>	True
<b>Well:</b>	8510D-25 D36 496	<b>Survey Calculation Method:</b>	Minimum Curvature
<b>Wellbore:</b>	DD		
<b>Design:</b>	Plan #1		

### Planned Survey

Measured Depth (ft)	Inclination (°)	Azimuth (°)	Vertical Depth (ft)	+N/-S (ft)	+E/-W (ft)	Vertical Section (ft)	Dogleg Rate (°/100ft)	Build Rate (°/100ft)	Comments / Formations
0.0	0.00	0.00	0.0	0.0	0.0	0.0	0.00	0.00	
100.0	0.00	0.00	100.0	0.0	0.0	0.0	0.00	0.00	
200.0	0.00	0.00	200.0	0.0	0.0	0.0	0.00	0.00	KOP @ 200' MD
300.0	3.00	47.02	300.0	1.8	1.9	2.6	3.00	3.00	
400.0	6.00	47.02	399.6	7.1	7.7	10.5	3.00	3.00	
500.0	9.00	47.02	498.8	16.0	17.2	23.5	3.00	3.00	
600.0	12.00	47.02	597.1	28.4	30.5	41.7	3.00	3.00	
700.0	15.00	47.02	694.3	44.4	47.6	65.1	3.00	3.00	
800.0	18.00	47.02	790.2	63.7	68.4	93.5	3.00	3.00	
900.0	21.00	47.02	884.4	86.5	92.8	126.9	3.00	3.00	
965.2	22.96	47.02	944.9	103.1	110.7	151.2	3.00	3.00	EOB; Inc=22.96°
1,000.0	22.96	47.02	976.9	112.4	120.6	164.8	0.00	0.00	
1,100.0	22.96	47.02	1,069.0	138.9	149.1	203.8	0.00	0.00	
1,200.0	22.96	47.02	1,161.1	165.5	177.7	242.8	0.00	0.00	
1,297.6	22.96	47.02	1,251.0	191.5	205.5	280.9	0.00	0.00	A_GROOVE (TVD)
1,300.0	22.96	47.02	1,253.2	192.1	206.2	281.8	0.00	0.00	
1,400.0	22.96	47.02	1,345.3	218.7	234.7	320.8	0.00	0.00	
1,500.0	22.96	47.02	1,437.3	245.3	263.3	359.8	0.00	0.00	
1,600.0	22.96	47.02	1,529.4	271.9	291.8	398.8	0.00	0.00	
1,700.0	22.96	47.02	1,621.5	298.5	320.3	437.8	0.00	0.00	
1,800.0	22.96	47.02	1,713.6	325.1	348.9	476.8	0.00	0.00	
1,900.0	22.96	47.02	1,805.7	351.6	377.4	515.8	0.00	0.00	
2,000.0	22.96	47.02	1,897.7	378.2	406.0	554.8	0.00	0.00	
2,100.0	22.96	47.02	1,989.8	404.8	434.5	593.8	0.00	0.00	
2,200.0	22.96	47.02	2,081.9	431.4	463.0	632.8	0.00	0.00	
2,300.0	22.96	47.02	2,174.0	458.0	491.6	671.8	0.00	0.00	
2,400.0	22.96	47.02	2,266.1	484.6	520.1	710.8	0.00	0.00	
2,500.0	22.96	47.02	2,358.1	511.2	548.6	749.9	0.00	0.00	
2,600.0	22.96	47.02	2,450.2	537.7	577.2	788.9	0.00	0.00	
2,623.6	22.96	47.02	2,472.0	544.0	583.9	798.1	0.00	0.00	GARDEN_GULCH / L-1 (TVD)
2,700.0	22.96	47.02	2,542.3	564.3	605.7	827.9	0.00	0.00	
2,800.0	22.96	47.02	2,634.4	590.9	634.2	866.9	0.00	0.00	
2,900.0	22.96	47.02	2,726.5	617.5	662.8	905.9	0.00	0.00	
3,000.0	22.96	47.02	2,818.5	644.1	691.3	944.9	0.00	0.00	
3,100.0	22.96	47.02	2,910.6	670.7	719.8	983.9	0.00	0.00	
3,200.0	22.96	47.02	3,002.7	697.3	748.4	1,022.9	0.00	0.00	
3,300.0	22.96	47.02	3,094.8	723.9	776.9	1,061.9	0.00	0.00	
3,400.0	22.96	47.02	3,186.9	750.4	805.5	1,100.9	0.00	0.00	
3,500.0	22.96	47.02	3,279.0	777.0	834.0	1,139.9	0.00	0.00	
3,600.0	22.96	47.02	3,371.0	803.6	862.5	1,178.9	0.00	0.00	
3,700.0	22.96	47.02	3,463.1	830.2	891.1	1,217.9	0.00	0.00	
3,800.0	22.96	47.02	3,555.2	856.8	919.6	1,256.9	0.00	0.00	
3,900.0	22.96	47.02	3,647.3	883.4	948.1	1,295.9	0.00	0.00	
4,000.0	22.96	47.02	3,739.4	910.0	976.7	1,334.9	0.00	0.00	
4,100.0	22.96	47.02	3,831.4	936.5	1,005.2	1,373.9	0.00	0.00	
4,200.0	22.96	47.02	3,923.5	963.1	1,033.7	1,412.9	0.00	0.00	
4,300.0	22.96	47.02	4,015.6	989.7	1,062.3	1,451.9	0.00	0.00	
4,400.0	22.96	47.02	4,107.7	1,016.3	1,090.8	1,490.9	0.00	0.00	
4,500.0	22.96	47.02	4,199.8	1,042.9	1,119.3	1,529.9	0.00	0.00	
4,600.0	22.96	47.02	4,291.8	1,069.5	1,147.9	1,568.9	0.00	0.00	
4,700.0	22.96	47.02	4,383.9	1,096.1	1,176.4	1,607.9	0.00	0.00	
4,800.0	22.96	47.02	4,476.0	1,122.7	1,205.0	1,646.9	0.00	0.00	

# Cathedral Energy Services

## Planning Report

<b>Database:</b>	EDM 5000.1 US Multi Users DB	<b>Local Co-ordinate Reference:</b>	Well 8510D-25 D36 496
<b>Company:</b>	EnCana Oil & Gas (USA) Inc	<b>TVD Reference:</b>	KBE @ 8324.0ft (Original Well Elev)
<b>Project:</b>	Story Gulch	<b>MD Reference:</b>	KBE @ 8324.0ft (Original Well Elev)
<b>Site:</b>	S36-T4S-R96W (D36 496)	<b>North Reference:</b>	True
<b>Well:</b>	8510D-25 D36 496	<b>Survey Calculation Method:</b>	Minimum Curvature
<b>Wellbore:</b>	DD		
<b>Design:</b>	Plan #1		

Planned Survey									
Measured Depth (ft)	Inclination (°)	Azimuth (°)	Vertical Depth (ft)	+N/-S (ft)	+E/-W (ft)	Vertical Section (ft)	Dogleg Rate (°/100ft)	Build Rate (°/100ft)	Comments / Formations
4,900.0	22.96	47.02	4,568.1	1,149.2	1,233.5	1,685.9	0.00	0.00	
5,000.0	22.96	47.02	4,660.2	1,175.8	1,262.0	1,724.9	0.00	0.00	
5,100.0	22.96	47.02	4,752.2	1,202.4	1,290.6	1,763.9	0.00	0.00	
5,200.0	22.96	47.02	4,844.3	1,229.0	1,319.1	1,802.9	0.00	0.00	
5,300.0	22.96	47.02	4,936.4	1,255.6	1,347.6	1,841.9	0.00	0.00	
5,400.0	22.96	47.02	5,028.5	1,282.2	1,376.2	1,880.9	0.00	0.00	
5,500.0	22.96	47.02	5,120.6	1,308.8	1,404.7	1,919.9	0.00	0.00	
5,600.0	22.96	47.02	5,212.6	1,335.4	1,433.2	1,958.9	0.00	0.00	
5,700.0	22.96	47.02	5,304.7	1,361.9	1,461.8	1,997.9	0.00	0.00	
5,800.0	22.96	47.02	5,396.8	1,388.5	1,490.3	2,036.9	0.00	0.00	
5,900.0	22.96	47.02	5,488.9	1,415.1	1,518.8	2,075.9	0.00	0.00	
6,000.0	22.96	47.02	5,581.0	1,441.7	1,547.4	2,114.9	0.00	0.00	
6,100.0	22.96	47.02	5,673.1	1,468.3	1,575.9	2,153.9	0.00	0.00	
6,200.0	22.96	47.02	5,765.1	1,494.9	1,604.4	2,192.9	0.00	0.00	
6,300.0	22.96	47.02	5,857.2	1,521.5	1,633.0	2,231.9	0.00	0.00	
6,363.8	22.96	47.02	5,916.0	1,538.4	1,651.2	2,256.8	0.00	0.00	WASATCH_G (TVD)
6,400.0	22.96	47.02	5,949.3	1,548.0	1,661.5	2,270.9	0.00	0.00	
6,500.0	22.96	47.02	6,041.4	1,574.6	1,690.1	2,309.9	0.00	0.00	
6,600.0	22.96	47.02	6,133.5	1,601.2	1,718.6	2,348.9	0.00	0.00	
6,700.0	22.96	47.02	6,225.5	1,627.8	1,747.1	2,387.9	0.00	0.00	
6,800.0	22.96	47.02	6,317.6	1,654.4	1,775.7	2,426.9	0.00	0.00	
6,900.0	22.96	47.02	6,409.7	1,681.0	1,804.2	2,465.9	0.00	0.00	
7,000.0	22.96	47.02	6,501.8	1,707.6	1,832.7	2,504.9	0.00	0.00	
7,100.0	22.96	47.02	6,593.9	1,734.2	1,861.3	2,543.9	0.00	0.00	
7,200.0	22.96	47.02	6,685.9	1,760.7	1,889.8	2,582.9	0.00	0.00	
7,300.0	22.96	47.02	6,778.0	1,787.3	1,918.3	2,621.9	0.00	0.00	
7,400.0	22.96	47.02	6,870.1	1,813.9	1,946.9	2,660.9	0.00	0.00	
7,500.0	22.96	47.02	6,962.2	1,840.5	1,975.4	2,699.9	0.00	0.00	
7,600.0	22.96	47.02	7,054.3	1,867.1	2,003.9	2,738.9	0.00	0.00	
7,700.0	22.96	47.02	7,146.3	1,893.7	2,032.5	2,777.9	0.00	0.00	
7,800.0	22.96	47.02	7,238.4	1,920.3	2,061.0	2,816.9	0.00	0.00	
7,900.0	22.96	47.02	7,330.5	1,946.8	2,089.6	2,855.9	0.00	0.00	
8,000.0	22.96	47.02	7,422.6	1,973.4	2,118.1	2,895.0	0.00	0.00	
8,086.4	22.96	47.02	7,502.1	1,996.4	2,142.7	2,928.6	0.00	0.00	Start Drop -3.00
8,100.0	22.55	47.02	7,514.7	2,000.0	2,146.6	2,933.9	3.00	-3.00	
8,200.0	19.55	47.02	7,608.0	2,024.5	2,172.9	2,969.8	3.00	-3.00	
8,300.0	16.55	47.02	7,703.1	2,045.6	2,195.5	3,000.8	3.00	-3.00	
8,400.0	13.55	47.02	7,799.6	2,063.3	2,214.5	3,026.8	3.00	-3.00	
8,500.0	10.55	47.02	7,897.4	2,077.5	2,229.8	3,047.6	3.00	-3.00	
8,600.0	7.55	47.02	7,996.2	2,088.2	2,241.3	3,063.3	3.00	-3.00	
8,700.0	4.55	47.02	8,095.6	2,095.4	2,249.0	3,073.9	3.00	-3.00	
8,800.0	1.55	47.02	8,195.4	2,099.0	2,252.9	3,079.2	3.00	-3.00	
8,811.6	1.20	47.02	8,207.0	2,099.2	2,253.1	3,079.5	3.00	-3.00	WILLIAMS_FORK (TVD)
8,851.6	0.00	0.00	8,247.0	2,099.5	2,253.4	3,079.9	3.00	-3.00	EOD; Inc=0° - TOG (TVD) - 8510D-25 D36 496
8,900.0	0.12	239.72	8,295.4	2,099.5	2,253.4	3,079.8	0.25	0.25	
8,970.2	0.30	239.72	8,365.7	2,099.3	2,253.1	3,079.6	0.25	0.25	
9,000.0	0.30	239.72	8,395.4	2,099.3	2,253.0	3,079.4	0.00	0.00	
9,100.0	0.30	239.72	8,495.4	2,099.0	2,252.6	3,078.9	0.00	0.00	
9,200.0	0.30	239.72	8,595.4	2,098.7	2,252.1	3,078.4	0.00	0.00	
9,300.0	0.30	239.72	8,695.4	2,098.5	2,251.7	3,077.9	0.00	0.00	
9,400.0	0.30	239.72	8,795.4	2,098.2	2,251.2	3,077.4	0.00	0.00	
9,500.0	0.30	239.72	8,895.4	2,098.0	2,250.8	3,076.9	0.00	0.00	

# Cathedral Energy Services

## Planning Report

<b>Database:</b>	EDM 5000.1 US Multi Users DB	<b>Local Co-ordinate Reference:</b>	Well 8510D-25 D36 496
<b>Company:</b>	EnCana Oil & Gas (USA) Inc	<b>TVD Reference:</b>	KBE @ 8324.0ft (Original Well Elev)
<b>Project:</b>	Story Gulch	<b>MD Reference:</b>	KBE @ 8324.0ft (Original Well Elev)
<b>Site:</b>	S36-T4S-R96W (D36 496)	<b>North Reference:</b>	True
<b>Well:</b>	8510D-25 D36 496	<b>Survey Calculation Method:</b>	Minimum Curvature
<b>Wellbore:</b>	DD		
<b>Design:</b>	Plan #1		

### Planned Survey

Measured Depth (ft)	Inclination (°)	Azimuth (°)	Vertical Depth (ft)	+N/-S (ft)	+E/-W (ft)	Vertical Section (ft)	Dogleg Rate (°/100ft)	Build Rate (°/100ft)	Comments / Formations
9,600.0	0.30	239.72	8,995.4	2,097.7	2,250.3	3,076.4	0.00	0.00	
9,700.0	0.30	239.72	9,095.4	2,097.4	2,249.9	3,075.9	0.00	0.00	
9,800.0	0.30	239.72	9,195.4	2,097.2	2,249.4	3,075.4	0.00	0.00	
9,900.0	0.30	239.72	9,295.4	2,096.9	2,249.0	3,074.9	0.00	0.00	
10,000.0	0.30	239.72	9,395.4	2,096.7	2,248.5	3,074.4	0.00	0.00	
10,100.0	0.30	239.72	9,495.4	2,096.4	2,248.1	3,073.9	0.00	0.00	
10,200.0	0.30	239.72	9,595.4	2,096.1	2,247.6	3,073.4	0.00	0.00	
10,300.0	0.30	239.72	9,695.4	2,095.9	2,247.2	3,072.9	0.00	0.00	
10,400.0	0.30	239.72	9,795.4	2,095.6	2,246.7	3,072.4	0.00	0.00	
10,500.0	0.30	239.72	9,895.4	2,095.4	2,246.3	3,071.9	0.00	0.00	
10,600.0	0.30	239.72	9,995.4	2,095.1	2,245.8	3,071.4	0.00	0.00	
10,700.0	0.30	239.72	10,095.4	2,094.8	2,245.4	3,070.9	0.00	0.00	
10,800.0	0.30	239.72	10,195.4	2,094.6	2,245.0	3,070.3	0.00	0.00	
10,900.0	0.30	239.72	10,295.4	2,094.3	2,244.5	3,069.8	0.00	0.00	
11,000.0	0.30	239.72	10,395.4	2,094.0	2,244.1	3,069.3	0.00	0.00	
11,100.0	0.30	239.72	10,495.4	2,093.8	2,243.6	3,068.8	0.00	0.00	
11,200.0	0.30	239.72	10,595.4	2,093.5	2,243.2	3,068.3	0.00	0.00	
11,300.0	0.30	239.72	10,695.4	2,093.3	2,242.7	3,067.8	0.00	0.00	
11,400.0	0.30	239.72	10,795.4	2,093.0	2,242.3	3,067.3	0.00	0.00	
11,500.0	0.30	239.72	10,895.4	2,092.7	2,241.8	3,066.8	0.00	0.00	
11,600.0	0.30	239.72	10,995.4	2,092.5	2,241.4	3,066.3	0.00	0.00	
11,700.0	0.30	239.72	11,095.4	2,092.2	2,240.9	3,065.8	0.00	0.00	
11,800.0	0.30	239.72	11,195.4	2,092.0	2,240.5	3,065.3	0.00	0.00	
11,900.0	0.30	239.72	11,295.4	2,091.7	2,240.0	3,064.8	0.00	0.00	
12,000.0	0.30	239.72	11,395.4	2,091.4	2,239.6	3,064.3	0.00	0.00	
12,100.0	0.30	239.72	11,495.4	2,091.2	2,239.1	3,063.8	0.00	0.00	
12,200.0	0.30	239.72	11,595.4	2,090.9	2,238.7	3,063.3	0.00	0.00	
12,300.0	0.30	239.72	11,695.4	2,090.7	2,238.2	3,062.8	0.00	0.00	
12,400.0	0.30	239.72	11,795.4	2,090.4	2,237.8	3,062.3	0.00	0.00	
12,500.0	0.30	239.72	11,895.4	2,090.1	2,237.4	3,061.8	0.00	0.00	
12,600.0	0.30	239.72	11,995.4	2,089.9	2,236.9	3,061.3	0.00	0.00	
12,700.0	0.30	239.72	12,095.4	2,089.6	2,236.5	3,060.8	0.00	0.00	
12,722.6	0.30	239.72	12,118.0	2,089.5	2,236.4	3,060.6	0.00	0.00	ROLLINS (TVD) - 8510D-25 D36 496 BHL
12,800.0	0.30	239.72	12,195.4	2,089.3	2,236.0	3,060.2	0.00	0.00	
12,822.6	0.30	239.72	12,218.0	2,089.3	2,235.9	3,060.1	0.00	0.00	Drillers TD @ 12822.6' MD
12,900.0	0.30	239.72	12,295.4	2,089.1	2,235.6	3,059.7	0.00	0.00	
12,986.6	0.30	239.72	12,382.0	2,088.9	2,235.2	3,059.3	0.00	0.00	COZZETTE (TVD)
13,000.0	0.30	239.72	12,395.4	2,088.8	2,235.1	3,059.2	0.00	0.00	
13,062.6	0.30	239.72	12,458.0	2,088.7	2,234.8	3,058.9	0.00	0.00	LOWER_SEGO (TVD)
13,100.0	0.30	239.72	12,495.4	2,088.6	2,234.7	3,058.7	0.00	0.00	
13,200.0	0.30	239.72	12,595.4	2,088.3	2,234.2	3,058.2	0.00	0.00	
13,228.6	0.30	239.72	12,624.0	2,088.2	2,234.1	3,058.1	0.00	0.00	CORCORAN (TVD)
13,300.0	0.30	239.72	12,695.4	2,088.0	2,233.8	3,057.7	0.00	0.00	
13,400.0	0.30	239.72	12,795.4	2,087.8	2,233.3	3,057.2	0.00	0.00	
13,451.6	0.30	239.72	12,847.0	2,087.6	2,233.1	3,057.0	0.00	0.00	SEGO (TVD)
13,500.0	0.30	239.72	12,895.4	2,087.5	2,232.9	3,056.7	0.00	0.00	
13,600.0	0.30	239.72	12,995.4	2,087.3	2,232.4	3,056.2	0.00	0.00	
13,700.0	0.30	239.72	13,095.4	2,087.0	2,232.0	3,055.7	0.00	0.00	
13,800.0	0.30	239.72	13,195.4	2,086.7	2,231.5	3,055.2	0.00	0.00	
13,822.6	0.30	239.72	13,218.0	2,086.7	2,231.4	3,055.1	0.00	0.00	Permit TD @ 13822.6' MD

# Cathedral Energy Services

## Planning Report

<b>Database:</b>	EDM 5000.1 US Multi Users DB	<b>Local Co-ordinate Reference:</b>	Well 8510D-25 D36 496
<b>Company:</b>	EnCana Oil & Gas (USA) Inc	<b>TVD Reference:</b>	KBE @ 8324.0ft (Original Well Elev)
<b>Project:</b>	Story Gulch	<b>MD Reference:</b>	KBE @ 8324.0ft (Original Well Elev)
<b>Site:</b>	S36-T4S-R96W (D36 496)	<b>North Reference:</b>	True
<b>Well:</b>	8510D-25 D36 496	<b>Survey Calculation Method:</b>	Minimum Curvature
<b>Wellbore:</b>	DD		
<b>Design:</b>	Plan #1		

Targets									
Target Name									
- hit/miss target	Dip Angle	Dip Dir.	TVD	+N/-S	+E/-W	Northing	Easting	Latitude	Longitude
- Shape	(°)	(°)	(ft)	(ft)	(ft)	(ft)	(ft)		
8510D-25 D36 496 TOG	0.00	0.00	8,247.0	2,099.5	2,253.4	1,679,865.94	2,264,068.93	39° 40' 15.41 N	108° 6' 52.94 W
- plan hits target center									
- Point									
8510D-25 D36 496 BHL	0.00	0.00	12,118.0	2,089.5	2,236.4	1,679,856.48	2,264,051.61	39° 40' 15.31 N	108° 6' 53.16 W
- plan hits target center									
- Rectangle (sides W30.0 H50.0 D0.0)									

Formations						
Measured Depth	Vertical Depth	Name	Lithology	Dip	Dip Direction	
(ft)	(ft)			(°)	(°)	
1,297.6	1,251.0	A_GROOVE (TVD)				
2,623.6	2,472.0	GARDEN_GULCH / L-1 (TVD)				
6,363.8	5,916.0	WASATCH_G (TVD)				
8,811.6	8,207.0	WILLIAMS_FORK (TVD)				
8,851.6	8,247.0	TOG (TVD)				
12,722.6	12,118.0	ROLLINS (TVD)				
12,986.6	12,382.0	COZZETTE (TVD)				
13,062.6	12,458.0	LOWER_SEGO (TVD)				
13,228.6	12,624.0	CORCORAN (TVD)				
13,451.6	12,847.0	SEGO (TVD)				

Plan Annotations				
Measured Depth	Vertical Depth	Local Coordinates		Comment
(ft)	(ft)	+N/-S (ft)	+E/-W (ft)	
200.0	200.0	0.0	0.0	KOP @ 200' MD
965.2	944.9	103.1	110.7	EOB; Inc=22.96°
8,086.4	7,502.1	1,996.4	2,142.7	Start Drop -3.00
8,851.6	8,247.0	2,099.5	2,253.4	EOD; Inc=0°
12,822.6	12,218.0	2,099.3	2,253.1	Drillers TD @ 12822.6' MD
13,822.6	13,218.0	2,089.5	2,236.4	Permit TD @ 13822.6' MD