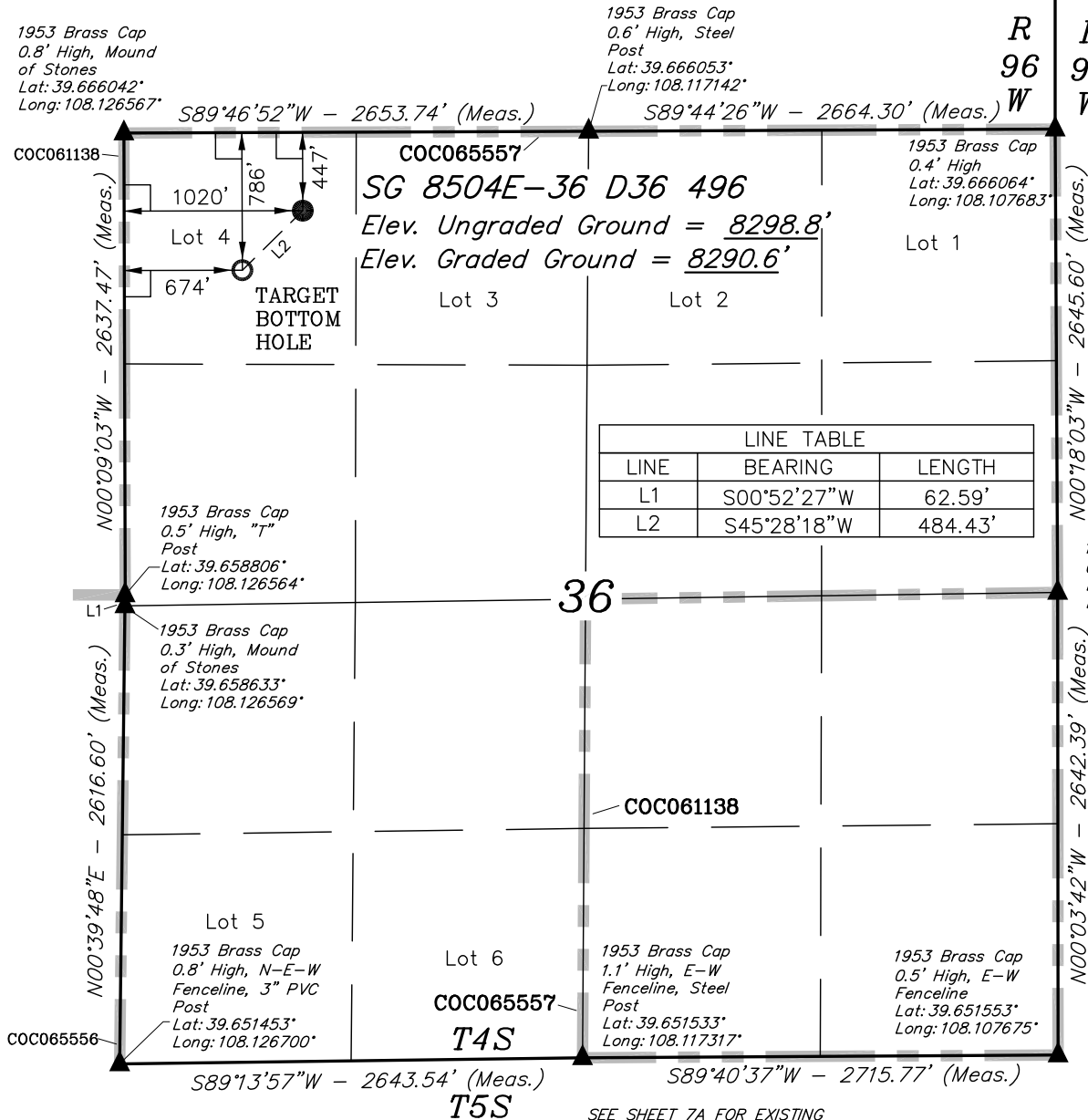


T4S, R96W, 6th P.M.

Encana OIL & GAS (USA) INC.

Well location, SG 8504E-36 D36 496, located as shown in Lot 4 of Section 36, T4S, R96W, 6th P.M., Garfield County, Colorado.

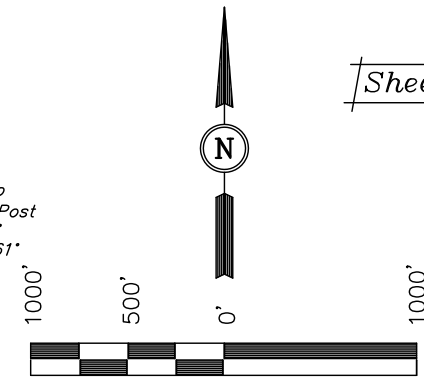


BASIS OF ELEVATION

BENCH MARK (H79) LOCATED IN THE NE 1/4 OF SECTION 35, T4S, R98W, 6th P.M. TAKEN FROM THE BULL FORK QUADRANGLE, COLORADO, 7.5 MINUTE SERIES (TOPOGRAPHICAL MAP) PUBLISHED BY THE UNITED STATES DEPARTMENT OF THE INTERIOR, GEOLOGICAL SURVEY. SAID ELEVATION IS MARKED AS BEING 8535 FEET.

BASIS OF BEARINGS

BASIS OF BEARINGS IS A G.P.S. OBSERVATION.



CERTIFICATE

THIS IS TO CERTIFY THAT THE ABOVE PLAT WAS PREPARED FROM FIELD NOTES OF ACTUAL SURVEYS MADE BY ME OR UNDER MY SUPERVISION AND THAT THE SAME ARE TRUE AND CORRECT TO THE BEST OF MY KNOWLEDGE AND BELIEF.

REGISTERED LAND SURVEYOR
REGISTRATION NO. 17492
STATE OF COLORADO

Revised: 05-18-11 D.R.B.
Revised: 07-26-10 D.R.B.

UINTAH ENGINEERING & LAND SURVEYING
85 SOUTH 200 EAST - VERNAL, UTAH 84078
(435) 789-1017

NAD 83 (TARGET BOTTOM HOLE)	NAD 83 (SURFACE LOCATION)
LATITUDE = 39°39'50.00" (39.663889)	LATITUDE = 39°39'53.35" (39.664819)
LONGITUDE = 108°07'27.02" (108.124172)	LONGITUDE = 108°07'22.59" (108.122942)
NAD 27 (TARGET BOTTOM HOLE)	NAD 27 (SURFACE LOCATION)
LATITUDE = 39°39'50.09" (39.663914)	LATITUDE = 39°39'53.43" (39.664842)
LONGITUDE = 108°07'24.73" (108.123536)	LONGITUDE = 108°07'20.31" (108.122308)

PDOP = 2.0

SEE SHEET 7A FOR EXISTING
IMPROVEMENT WITHIN 400' OF THE
PROPOSED WELL DISTURBANCE

Sheet 1a of 11

05-20-2011

FILE
Encana OIL & GAS (USA) INC.