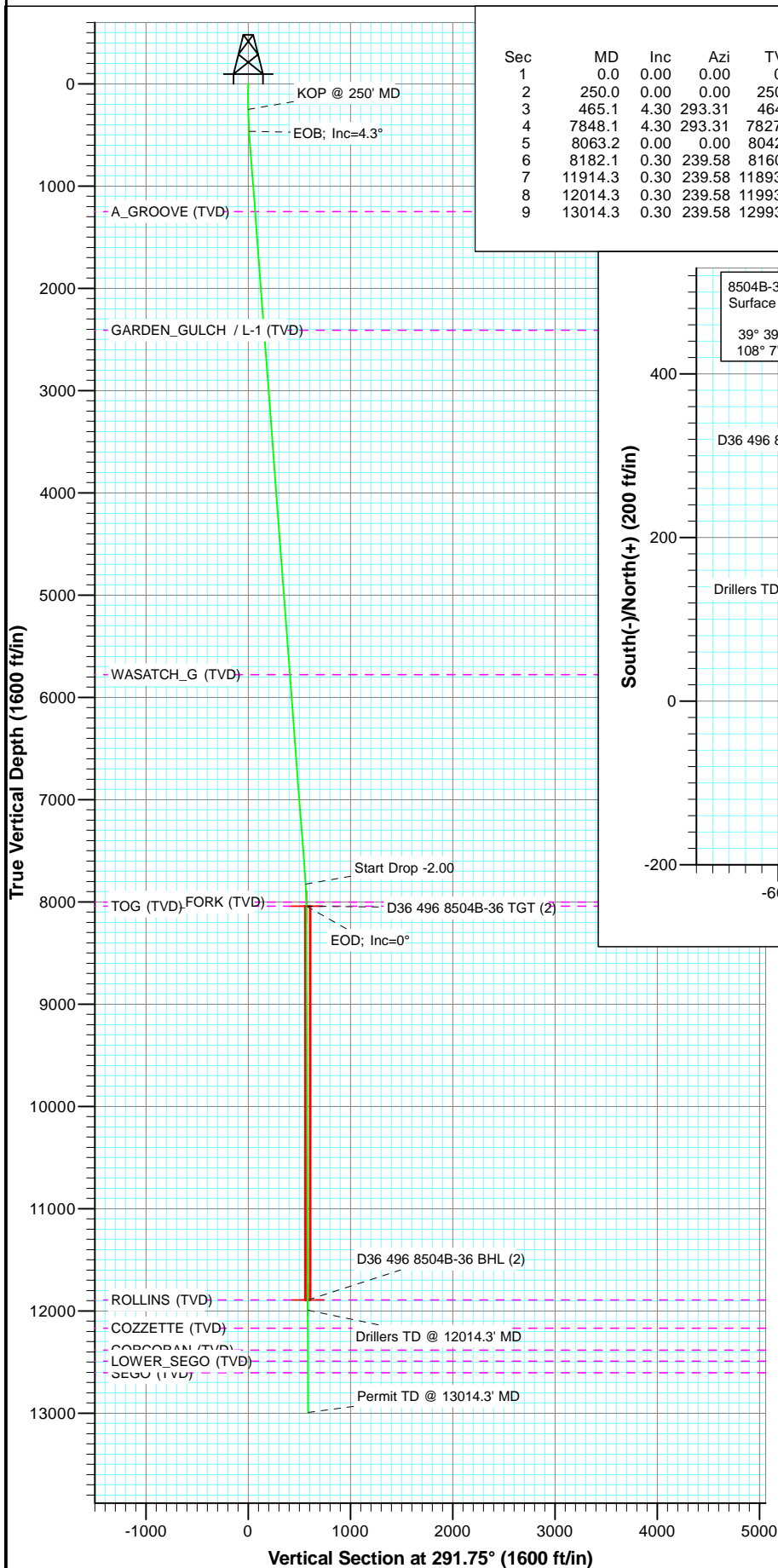


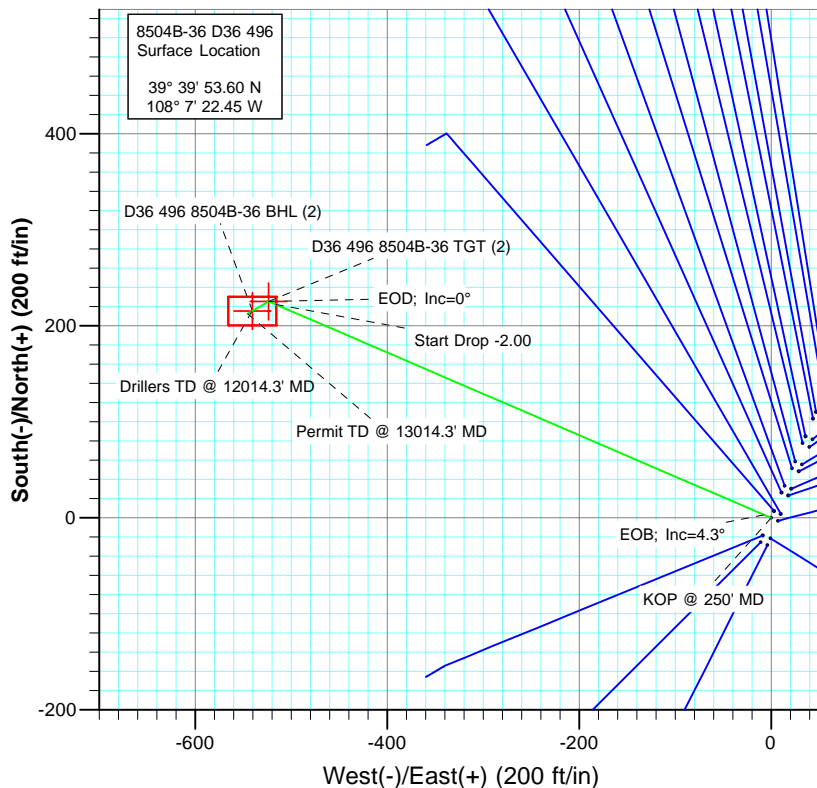


Project: Story Gulch
Site: S36-T4S-R96W (D36 496)
Well: 8504B-36 D36 496
Wellbore: DD
Plan: Plan #2



SECTION DETAILS

Sec	MD	Inc	Azi	TVD	+N/-S	+E/-W	Dleg	TFace	VSect	Target
1	0.0	0.00	0.00	0.0	0.0	0.0	0.00	0.00	0.0	
2	250.0	0.00	0.00	250.0	0.0	0.0	0.00	0.00	0.0	
3	465.1	4.30	293.31	464.9	3.2	-7.4	2.00	293.31	8.1	
4	7848.1	4.30	293.31	7827.1	222.3	-516.0	0.00	0.00	561.6	
5	8063.2	0.00	0.00	8042.0	225.5	-523.4	2.00	180.00	569.7	D36 496 8504B-36 TGT (2)
6	8182.1	0.30	239.58	8160.9	225.3	-523.7	0.25	239.58	569.9	
7	11914.3	0.30	239.58	11893.0	215.5	-540.4	0.00	0.00	581.8	D36 496 8504B-36 BHL (2)
8	12014.3	0.30	239.58	11993.0	215.3	-540.8	0.00	0.00	582.1	
9	13014.3	0.30	239.58	12993.0	212.6	-545.3	0.00	0.00	585.3	



TVDPath	MDPath	Formation
1250.0	1252.4	A_GROOVE (TVD)
2410.0	2415.7	GARDEN_GULCH / L-1 (TVD)
5779.0	5794.2	WASATCH_G (TVD)
8002.0	8023.2	WILLIAMS_FORK (TVD)
8042.0	8063.2	TOG (TVD)
11893.0	11914.3	ROLLINS (TVD)
12168.0	12189.3	COZZETTE (TVD)
12383.0	12404.3	CORCORAN (TVD)
12492.0	12513.3	LOWER_SEGO (TVD)
12606.0	12627.3	SEGO (TVD)



Azimuths to True North
Magnetic North: 10.44°

Magnetic Field
Strength: 52314.1nT
Dip Angle: 65.86°
Date: 5/19/2011
Model: IGRF2010

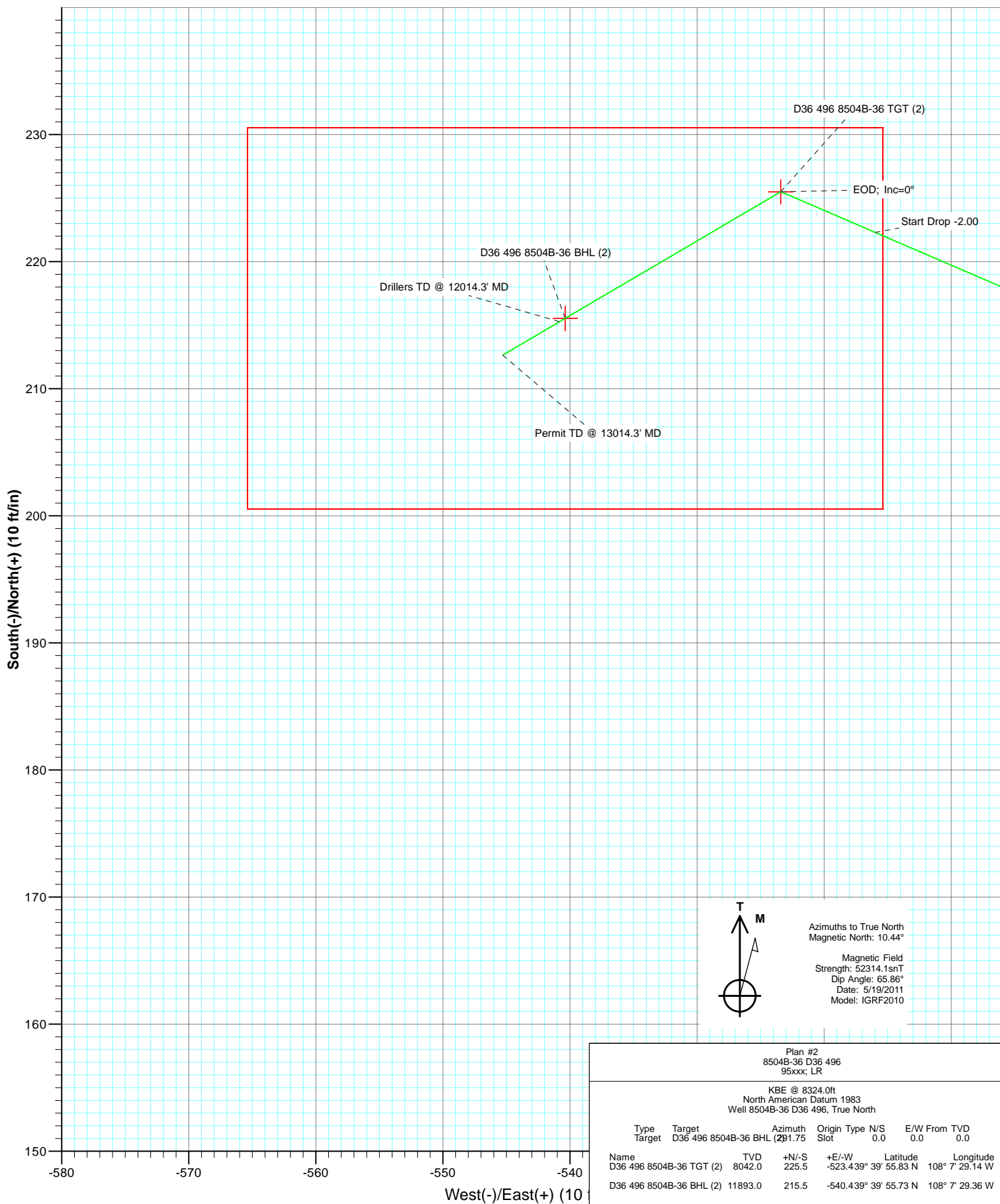
Plan #2
8504B-36 D36 496
95xxx; LR

KBE @ 8324.0ft
North American Datum 1983
Well 8504B-36 D36 496, True North

Type	Target	Target	Azimuth	Origin	Type	N/S	E/W	From	TVD
		D36 496 8504B-36 BHL (2)	291.75	Slot		0.0	0.0		0.0
Name		TVD							
D36 496 8504B-36 TGT (2)		8042.0	+N/-S	+E/-W	Latitude				Longitude
			225.5	-523.439° 39'	55.83 N				108° 7' 29.14 W
D36 496 8504B-36 BHL (2)		11893.0	215.5	-540.439° 39'	55.73 N				108° 7' 29.36 W



Project: Story Gulch
 Site: S36-T4S-R96W (D36 496)
 Well: 8504B-36 D36 496
 Wellbore: DD
 Plan: Plan #2



Azimuths to True North
 Magnetic North: 10.44°
 Magnetic Field
 Strength: 52314.1nT
 Dip Angle: 65.86°
 Date: 5/19/2011
 Model: IGRF2010

Plan #2							
8504B-36 D36 496							
95xxx; LR							
KBE @ 8324.0ft							
North American Datum 1983							
Well 8504B-36 D36 496, True North							
Type	Target	TVD	Azimuth	Origin	Type	N/S	E/W From
Target	D36 496 8504B-36 BHL	(291.75	Slot	0.0	0.0	0.0	
Name	D36 496 8504B-36 TGT (2)	8042.0	+N/-S	+E/-W	Latitude	Longitude	
			225.5	-523.439° 39'	55.83 N	108° 7' 29.14 W	
	D36 496 8504B-36 BHL (2)	11893.0	215.5	-540.439° 39'	55.73 N	108° 7' 29.36 W	

Cathedral Energy Services

Planning Report

Database:	EDM 5000.1 US Multi Users DB	Local Co-ordinate Reference:	Well 8504B-36 D36 496
Company:	EnCana Oil & Gas (USA) Inc	TVD Reference:	KBE @ 8324.0ft
Project:	Story Gulch	MD Reference:	KBE @ 8324.0ft
Site:	S36-T4S-R96W (D36 496)	North Reference:	True
Well:	8504B-36 D36 496	Survey Calculation Method:	Minimum Curvature
Wellbore:	DD		
Design:	Plan #2		

Project	Story Gulch		
Map System:	US State Plane 1983	System Datum:	Mean Sea Level
Geo Datum:	North American Datum 1983		
Map Zone:	Colorado Central Zone		

Site		S36-T4S-R96W (D36 496)			
Site Position:		Northing:	1,677,676.10 ft	Latitude:	39° 39' 53.09 N
From:	Lat/Long	Easting:	2,261,675.01 ft	Longitude:	108° 7' 22.74 W
Position Uncertainty:	0.0 ft	Slot Radius:	13.200 in	Grid Convergence:	-1.65 °

Well	8504B-36 D36 496					
Well Position	+N/-S	0.0 ft	Northing:	1,677,726.71 ft	Latitude:	39° 39' 53.60 N
	+E/-W	0.0 ft	Easting:	2,261,698.84 ft	Longitude:	108° 7' 22.45 W
Position Uncertainty		0.0 ft	Wellhead Elevation:	ft	Ground Level:	8,302.0 ft

Wellbore	DD				
Magnetics	Model Name	Sample Date	Declination (°)	Dip Angle (°)	Field Strength (nT)
	IGRF2010	5/19/2011	10.44	65.86	52,314

Design	Plan #2			
Audit Notes:				
Version:	Phase:	PLAN	Tie On Depth:	0.0
Vertical Section:	Depth From (TVD) (ft)	+N/-S (ft)	+E/-W (ft)	Direction (°)
	0.0	0.0	0.0	291.75

Plan Sections										
Measured Depth (ft)	Inclination (°)	Azimuth (°)	Vertical Depth (ft)	+N/-S (ft)	+E/-W (ft)	Dogleg Rate (°/100ft)	Build Rate (°/100ft)	Turn Rate (°/100ft)	TFO (°)	Target
0.0	0.00	0.00	0.0	0.0	0.0	0.00	0.00	0.00	0.00	
250.0	0.00	0.00	250.0	0.0	0.0	0.00	0.00	0.00	0.00	
465.1	4.30	293.31	464.9	3.2	-7.4	2.00	2.00	0.00	293.31	
7,848.1	4.30	293.31	7,827.1	222.3	-516.0	0.00	0.00	0.00	0.00	
8,063.2	0.00	0.00	8,042.0	225.5	-523.4	2.00	-2.00	0.00	180.00	D36 496 8504B-36 TC
8,182.1	0.30	239.58	8,160.9	225.3	-523.7	0.25	0.25	-101.27	239.58	
11,914.3	0.30	239.58	11,893.0	215.5	-540.4	0.00	0.00	0.00	0.00	D36 496 8504B-36 Bl
12,014.3	0.30	239.58	11,993.0	215.3	-540.8	0.00	0.00	0.00	0.00	
13,014.3	0.30	239.58	12,993.0	212.6	-545.3	0.00	0.00	0.00	0.00	

Cathedral Energy Services

Planning Report

Database:	EDM 5000.1 US Multi Users DB	Local Co-ordinate Reference:	Well 8504B-36 D36 496
Company:	EnCana Oil & Gas (USA) Inc	TVD Reference:	KBE @ 8324.0ft
Project:	Story Gulch	MD Reference:	KBE @ 8324.0ft
Site:	S36-T4S-R96W (D36 496)	North Reference:	True
Well:	8504B-36 D36 496	Survey Calculation Method:	Minimum Curvature
Wellbore:	DD		
Design:	Plan #2		

Planned Survey

Measured Depth (ft)	Inclination (°)	Azimuth (°)	Vertical Depth (ft)	+N/-S (ft)	+E/-W (ft)	Vertical Section (ft)	Dogleg Rate (°/100ft)	Build Rate (°/100ft)	Comments / Formations
0.0	0.00	0.00	0.0	0.0	0.0	0.0	0.00	0.00	
100.0	0.00	0.00	100.0	0.0	0.0	0.0	0.00	0.00	
200.0	0.00	0.00	200.0	0.0	0.0	0.0	0.00	0.00	
250.0	0.00	0.00	250.0	0.0	0.0	0.0	0.00	0.00	KOP @ 250' MD
300.0	1.00	293.31	300.0	0.2	-0.4	0.4	2.00	2.00	
400.0	3.00	293.31	399.9	1.6	-3.6	3.9	2.00	2.00	
465.1	4.30	293.31	464.9	3.2	-7.4	8.1	2.00	2.00	EOB; Inc=4.3°
500.0	4.30	293.31	499.7	4.2	-9.8	10.7	0.00	0.00	
600.0	4.30	293.31	599.4	7.2	-16.7	18.2	0.00	0.00	
700.0	4.30	293.31	699.1	10.2	-23.6	25.7	0.00	0.00	
800.0	4.30	293.31	798.9	13.1	-30.5	33.2	0.00	0.00	
900.0	4.30	293.31	898.6	16.1	-37.4	40.7	0.00	0.00	
1,000.0	4.30	293.31	998.3	19.1	-44.3	48.2	0.00	0.00	
1,100.0	4.30	293.31	1,098.0	22.0	-51.1	55.7	0.00	0.00	
1,200.0	4.30	293.31	1,197.7	25.0	-58.0	63.2	0.00	0.00	
1,252.4	4.30	293.31	1,250.0	26.6	-61.6	67.1	0.00	0.00	A_GROOVE (TVD)
1,300.0	4.30	293.31	1,297.4	28.0	-64.9	70.7	0.00	0.00	
1,400.0	4.30	293.31	1,397.2	30.9	-71.8	78.2	0.00	0.00	
1,500.0	4.30	293.31	1,496.9	33.9	-78.7	85.7	0.00	0.00	
1,600.0	4.30	293.31	1,596.6	36.9	-85.6	93.2	0.00	0.00	
1,700.0	4.30	293.31	1,696.3	39.8	-92.5	100.7	0.00	0.00	
1,800.0	4.30	293.31	1,796.0	42.8	-99.4	108.2	0.00	0.00	
1,900.0	4.30	293.31	1,895.8	45.8	-106.3	115.7	0.00	0.00	
2,000.0	4.30	293.31	1,995.5	48.7	-113.1	123.2	0.00	0.00	
2,100.0	4.30	293.31	2,095.2	51.7	-120.0	130.6	0.00	0.00	
2,200.0	4.30	293.31	2,194.9	54.7	-126.9	138.1	0.00	0.00	
2,300.0	4.30	293.31	2,294.6	57.6	-133.8	145.6	0.00	0.00	
2,400.0	4.30	293.31	2,394.3	60.6	-140.7	153.1	0.00	0.00	
2,415.7	4.30	293.31	2,410.0	61.1	-141.8	154.3	0.00	0.00	GARDEN_GULCH / L-1 (TVD)
2,500.0	4.30	293.31	2,494.1	63.6	-147.6	160.6	0.00	0.00	
2,600.0	4.30	293.31	2,593.8	66.6	-154.5	168.1	0.00	0.00	
2,700.0	4.30	293.31	2,693.5	69.5	-161.4	175.6	0.00	0.00	
2,800.0	4.30	293.31	2,793.2	72.5	-168.3	183.1	0.00	0.00	
2,900.0	4.30	293.31	2,892.9	75.5	-175.1	190.6	0.00	0.00	
3,000.0	4.30	293.31	2,992.7	78.4	-182.0	198.1	0.00	0.00	
3,100.0	4.30	293.31	3,092.4	81.4	-188.9	205.6	0.00	0.00	
3,200.0	4.30	293.31	3,192.1	84.4	-195.8	213.1	0.00	0.00	
3,300.0	4.30	293.31	3,291.8	87.3	-202.7	220.6	0.00	0.00	
3,400.0	4.30	293.31	3,391.5	90.3	-209.6	228.1	0.00	0.00	
3,500.0	4.30	293.31	3,491.2	93.3	-216.5	235.6	0.00	0.00	
3,600.0	4.30	293.31	3,591.0	96.2	-223.4	243.1	0.00	0.00	
3,700.0	4.30	293.31	3,690.7	99.2	-230.2	250.6	0.00	0.00	
3,800.0	4.30	293.31	3,790.4	102.2	-237.1	258.1	0.00	0.00	
3,900.0	4.30	293.31	3,890.1	105.1	-244.0	265.6	0.00	0.00	
4,000.0	4.30	293.31	3,989.8	108.1	-250.9	273.1	0.00	0.00	
4,100.0	4.30	293.31	4,089.6	111.1	-257.8	280.6	0.00	0.00	
4,200.0	4.30	293.31	4,189.3	114.0	-264.7	288.1	0.00	0.00	
4,300.0	4.30	293.31	4,289.0	117.0	-271.6	295.6	0.00	0.00	
4,400.0	4.30	293.31	4,388.7	120.0	-278.5	303.1	0.00	0.00	
4,500.0	4.30	293.31	4,488.4	122.9	-285.4	310.6	0.00	0.00	
4,600.0	4.30	293.31	4,588.2	125.9	-292.2	318.1	0.00	0.00	
4,700.0	4.30	293.31	4,687.9	128.9	-299.1	325.6	0.00	0.00	

Cathedral Energy Services

Planning Report

Database:	EDM 5000.1 US Multi Users DB	Local Co-ordinate Reference:	Well 8504B-36 D36 496
Company:	EnCana Oil & Gas (USA) Inc	TVD Reference:	KBE @ 8324.0ft
Project:	Story Gulch	MD Reference:	KBE @ 8324.0ft
Site:	S36-T4S-R96W (D36 496)	North Reference:	True
Well:	8504B-36 D36 496	Survey Calculation Method:	Minimum Curvature
Wellbore:	DD		
Design:	Plan #2		

Planned Survey

Measured Depth (ft)	Inclination (°)	Azimuth (°)	Vertical Depth (ft)	+N/-S (ft)	+E/-W (ft)	Vertical Section (ft)	Dogleg Rate (°/100ft)	Build Rate (°/100ft)	Comments / Formations
4,800.0	4.30	293.31	4,787.6	131.8	-306.0	333.1	0.00	0.00	
4,900.0	4.30	293.31	4,887.3	134.8	-312.9	340.6	0.00	0.00	
5,000.0	4.30	293.31	4,987.0	137.8	-319.8	348.1	0.00	0.00	
5,100.0	4.30	293.31	5,086.7	140.7	-326.7	355.6	0.00	0.00	
5,200.0	4.30	293.31	5,186.5	143.7	-333.6	363.1	0.00	0.00	
5,300.0	4.30	293.31	5,286.2	146.7	-340.5	370.6	0.00	0.00	
5,400.0	4.30	293.31	5,385.9	149.7	-347.4	378.1	0.00	0.00	
5,500.0	4.30	293.31	5,485.6	152.6	-354.2	385.6	0.00	0.00	
5,600.0	4.30	293.31	5,585.3	155.6	-361.1	393.1	0.00	0.00	
5,700.0	4.30	293.31	5,685.1	158.6	-368.0	400.6	0.00	0.00	
5,794.2	4.30	293.31	5,779.0	161.4	-374.5	407.6	0.00	0.00	WASATCH_G (TVD)
5,800.0	4.30	293.31	5,784.8	161.5	-374.9	408.1	0.00	0.00	
5,900.0	4.30	293.31	5,884.5	164.5	-381.8	415.6	0.00	0.00	
6,000.0	4.30	293.31	5,984.2	167.5	-388.7	423.1	0.00	0.00	
6,100.0	4.30	293.31	6,083.9	170.4	-395.6	430.6	0.00	0.00	
6,200.0	4.30	293.31	6,183.6	173.4	-402.5	438.1	0.00	0.00	
6,300.0	4.30	293.31	6,283.4	176.4	-409.3	445.6	0.00	0.00	
6,400.0	4.30	293.31	6,383.1	179.3	-416.2	453.1	0.00	0.00	
6,500.0	4.30	293.31	6,482.8	182.3	-423.1	460.6	0.00	0.00	
6,600.0	4.30	293.31	6,582.5	185.3	-430.0	468.1	0.00	0.00	
6,700.0	4.30	293.31	6,682.2	188.2	-436.9	475.5	0.00	0.00	
6,800.0	4.30	293.31	6,782.0	191.2	-443.8	483.0	0.00	0.00	
6,900.0	4.30	293.31	6,881.7	194.2	-450.7	490.5	0.00	0.00	
7,000.0	4.30	293.31	6,981.4	197.1	-457.6	498.0	0.00	0.00	
7,100.0	4.30	293.31	7,081.1	200.1	-464.5	505.5	0.00	0.00	
7,200.0	4.30	293.31	7,180.8	203.1	-471.3	513.0	0.00	0.00	
7,300.0	4.30	293.31	7,280.5	206.0	-478.2	520.5	0.00	0.00	
7,400.0	4.30	293.31	7,380.3	209.0	-485.1	528.0	0.00	0.00	
7,500.0	4.30	293.31	7,480.0	212.0	-492.0	535.5	0.00	0.00	
7,600.0	4.30	293.31	7,579.7	214.9	-498.9	543.0	0.00	0.00	
7,700.0	4.30	293.31	7,679.4	217.9	-505.8	550.5	0.00	0.00	
7,800.0	4.30	293.31	7,779.1	220.9	-512.7	558.0	0.00	0.00	
7,848.1	4.30	293.31	7,827.1	222.3	-516.0	561.6	0.00	0.00	Start Drop -2.00
7,900.0	3.26	293.31	7,878.9	223.7	-519.1	565.1	2.00	-2.00	
8,000.0	1.26	293.31	7,978.8	225.2	-522.8	569.0	2.00	-2.00	
8,023.2	0.80	293.31	8,002.0	225.4	-523.1	569.4	2.00	-2.00	WILLIAMS_FORK (TVD)
8,063.2	0.00	0.00	8,042.0	225.5	-523.4	569.7	2.00	-2.00	EOD; Inc=0° - TOG (TVD) - D36 496 8504B-36
8,100.0	0.09	239.58	8,078.8	225.5	-523.4	569.7	0.25	0.25	
8,182.1	0.30	239.58	8,160.9	225.3	-523.7	569.9	0.25	0.25	
8,200.0	0.30	239.58	8,178.8	225.3	-523.7	569.9	0.00	0.00	
8,300.0	0.30	239.58	8,278.8	225.0	-524.2	570.3	0.00	0.00	
8,400.0	0.30	239.58	8,378.8	224.8	-524.6	570.6	0.00	0.00	
8,500.0	0.30	239.58	8,478.8	224.5	-525.1	570.9	0.00	0.00	
8,600.0	0.30	239.58	8,578.8	224.2	-525.5	571.2	0.00	0.00	
8,700.0	0.30	239.58	8,678.8	224.0	-526.0	571.5	0.00	0.00	
8,800.0	0.30	239.58	8,778.8	223.7	-526.4	571.9	0.00	0.00	
8,900.0	0.30	239.58	8,878.8	223.5	-526.9	572.2	0.00	0.00	
9,000.0	0.30	239.58	8,978.8	223.2	-527.3	572.5	0.00	0.00	
9,100.0	0.30	239.58	9,078.8	222.9	-527.8	572.8	0.00	0.00	
9,200.0	0.30	239.58	9,178.8	222.7	-528.2	573.1	0.00	0.00	
9,300.0	0.30	239.58	9,278.8	222.4	-528.7	573.4	0.00	0.00	
9,400.0	0.30	239.58	9,378.8	222.1	-529.1	573.8	0.00	0.00	

Cathedral Energy Services

Planning Report

Database:	EDM 5000.1 US Multi Users DB	Local Co-ordinate Reference:	Well 8504B-36 D36 496
Company:	EnCana Oil & Gas (USA) Inc	TVD Reference:	KBE @ 8324.0ft
Project:	Story Gulch	MD Reference:	KBE @ 8324.0ft
Site:	S36-T4S-R96W (D36 496)	North Reference:	True
Well:	8504B-36 D36 496	Survey Calculation Method:	Minimum Curvature
Wellbore:	DD		
Design:	Plan #2		

Planned Survey									
Measured Depth (ft)	Inclination (°)	Azimuth (°)	Vertical Depth (ft)	+N/-S (ft)	+E/-W (ft)	Vertical Section (ft)	Dogleg Rate (°/100ft)	Build Rate (°/100ft)	Comments / Formations
9,500.0	0.30	239.58	9,478.8	221.9	-529.6	574.1	0.00	0.00	
9,600.0	0.30	239.58	9,578.8	221.6	-530.0	574.4	0.00	0.00	
9,700.0	0.30	239.58	9,678.8	221.4	-530.5	574.7	0.00	0.00	
9,800.0	0.30	239.58	9,778.8	221.1	-530.9	575.0	0.00	0.00	
9,900.0	0.30	239.58	9,878.8	220.8	-531.4	575.4	0.00	0.00	
10,000.0	0.30	239.58	9,978.8	220.6	-531.8	575.7	0.00	0.00	
10,100.0	0.30	239.58	10,078.8	220.3	-532.2	576.0	0.00	0.00	
10,200.0	0.30	239.58	10,178.8	220.0	-532.7	576.3	0.00	0.00	
10,300.0	0.30	239.58	10,278.8	219.8	-533.1	576.6	0.00	0.00	
10,400.0	0.30	239.58	10,378.8	219.5	-533.6	576.9	0.00	0.00	
10,500.0	0.30	239.58	10,478.8	219.3	-534.0	577.3	0.00	0.00	
10,600.0	0.30	239.58	10,578.8	219.0	-534.5	577.6	0.00	0.00	
10,700.0	0.30	239.58	10,678.8	218.7	-534.9	577.9	0.00	0.00	
10,800.0	0.30	239.58	10,778.8	218.5	-535.4	578.2	0.00	0.00	
10,900.0	0.30	239.58	10,878.8	218.2	-535.8	578.5	0.00	0.00	
11,000.0	0.30	239.58	10,978.8	217.9	-536.3	578.9	0.00	0.00	
11,100.0	0.30	239.58	11,078.8	217.7	-536.7	579.2	0.00	0.00	
11,200.0	0.30	239.58	11,178.8	217.4	-537.2	579.5	0.00	0.00	
11,300.0	0.30	239.58	11,278.8	217.2	-537.6	579.8	0.00	0.00	
11,400.0	0.30	239.58	11,378.8	216.9	-538.1	580.1	0.00	0.00	
11,500.0	0.30	239.58	11,478.8	216.6	-538.5	580.4	0.00	0.00	
11,600.0	0.30	239.58	11,578.8	216.4	-539.0	580.8	0.00	0.00	
11,700.0	0.30	239.58	11,678.8	216.1	-539.4	581.1	0.00	0.00	
11,800.0	0.30	239.58	11,778.7	215.8	-539.9	581.4	0.00	0.00	
11,890.2	0.30	239.58	11,868.9	215.6	-540.3	581.7	0.00	0.00	D36 496 8504B-36 BHL
11,900.0	0.30	239.58	11,878.7	215.6	-540.3	581.7	0.00	0.00	
11,914.3	0.30	239.58	11,893.0	215.5	-540.4	581.8	0.00	0.00	ROLLINS (TVD) - D36 496 8504B-36 BHL (2)
12,000.0	0.30	239.58	11,978.7	215.3	-540.7	582.0	0.00	0.00	
12,014.3	0.30	239.58	11,993.0	215.3	-540.8	582.1	0.00	0.00	Drillers TD @ 12014.3' MD
12,100.0	0.30	239.58	12,078.7	215.1	-541.2	582.4	0.00	0.00	
12,189.3	0.30	239.58	12,168.0	214.8	-541.6	582.6	0.00	0.00	COZZETTE (TVD)
12,200.0	0.30	239.58	12,178.7	214.8	-541.6	582.7	0.00	0.00	
12,300.0	0.30	239.58	12,278.7	214.5	-542.1	583.0	0.00	0.00	
12,400.0	0.30	239.58	12,378.7	214.3	-542.5	583.3	0.00	0.00	
12,404.3	0.30	239.58	12,383.0	214.3	-542.6	583.3	0.00	0.00	CORCORAN (TVD)
12,500.0	0.30	239.58	12,478.7	214.0	-543.0	583.6	0.00	0.00	
12,513.3	0.30	239.58	12,492.0	214.0	-543.0	583.7	0.00	0.00	LOWER_SEGO (TVD)
12,600.0	0.30	239.58	12,578.7	213.7	-543.4	583.9	0.00	0.00	
12,627.3	0.30	239.58	12,606.0	213.7	-543.6	584.0	0.00	0.00	SEGO (TVD)
12,700.0	0.30	239.58	12,678.7	213.5	-543.9	584.3	0.00	0.00	
12,800.0	0.30	239.58	12,778.7	213.2	-544.3	584.6	0.00	0.00	
12,900.0	0.30	239.58	12,878.7	212.9	-544.8	584.9	0.00	0.00	
13,000.0	0.30	239.58	12,978.7	212.7	-545.2	585.2	0.00	0.00	
13,014.3	0.30	239.58	12,993.0	212.6	-545.3	585.3	0.00	0.00	

Cathedral Energy Services

Planning Report

Database:	EDM 5000.1 US Multi Users DB	Local Co-ordinate Reference:	Well 8504B-36 D36 496
Company:	EnCana Oil & Gas (USA) Inc	TVD Reference:	KBE @ 8324.0ft
Project:	Story Gulch	MD Reference:	KBE @ 8324.0ft
Site:	S36-T4S-R96W (D36 496)	North Reference:	True
Well:	8504B-36 D36 496	Survey Calculation Method:	Minimum Curvature
Wellbore:	DD		
Design:	Plan #2		

Targets									
Target Name									
- hit/miss target	Dip Angle	Dip Dir.	TVD	+N/-S	+E/-W	Northing	Easting	Latitude	Longitude
- Shape	(°)	(°)	(ft)	(ft)	(ft)	(ft)	(ft)		
D36 496 8504B-36 TGT	0.00	0.00	8,042.0	225.5	-523.4	1,677,967.22	2,261,182.17	39° 39' 55.83 N	108° 7' 29.14 W
- plan hits target center									
- Point									
D36 496 8504B-36 BHL	0.00	0.00	11,869.0	-39.4	-369.9	1,677,697.96	2,261,327.96	39° 39' 53.21 N	108° 7' 27.18 W
- plan misses target center by 306.7ft at 11890.2ft MD (11868.9 TVD, 215.6 N, -540.3 E)									
- Rectangle (sides W30.0 H50.0 D0.0)									
D36 496 8504B-36 BHL	0.00	0.00	11,893.0	215.5	-540.4	1,677,957.76	2,261,164.92	39° 39' 55.73 N	108° 7' 29.36 W
- plan hits target center									
- Rectangle (sides W30.0 H50.0 D0.0)									

Formations					
Measured Depth	Vertical Depth	Name	Lithology	Dip	Dip Direction
(ft)	(ft)			(°)	(°)
1,252.4	1,250.0	A_GROOVE (TVD)		0.00	
2,415.7	2,410.0	GARDEN_GULCH / L-1 (TVD)		0.00	
5,794.2	5,779.0	WASATCH_G (TVD)		0.00	
8,023.2	8,002.0	WILLIAMS_FORK (TVD)		0.00	
8,063.2	8,042.0	TOG (TVD)		0.00	
11,914.3	11,893.0	ROLLINS (TVD)		0.00	
12,189.3	12,168.0	COZZETTE (TVD)		0.00	
12,404.3	12,383.0	CORCORAN (TVD)		0.00	
12,513.3	12,492.0	LOWER_SEGO (TVD)		0.00	
12,627.3	12,606.0	SEGO (TVD)		0.00	

Plan Annotations				
Measured Depth	Vertical Depth	Local Coordinates		
(ft)	(ft)	+N/-S	+E/-W	Comment
(ft)	(ft)	(ft)	(ft)	
250.0	250.0	0.0	0.0	KOP @ 250' MD
465.1	464.9	3.2	-7.4	EOB; Inc=4.3°
7,848.1	7,827.1	222.3	-516.0	Start Drop -2.00
8,063.2	8,042.0	225.5	-523.4	EOD; Inc=0°
12,014.3	11,993.0	225.3	-523.7	Drillers TD @ 12014.3' MD
13,014.3	12,993.0	215.5	-540.4	Permit TD @ 13014.3' MD