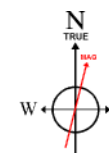
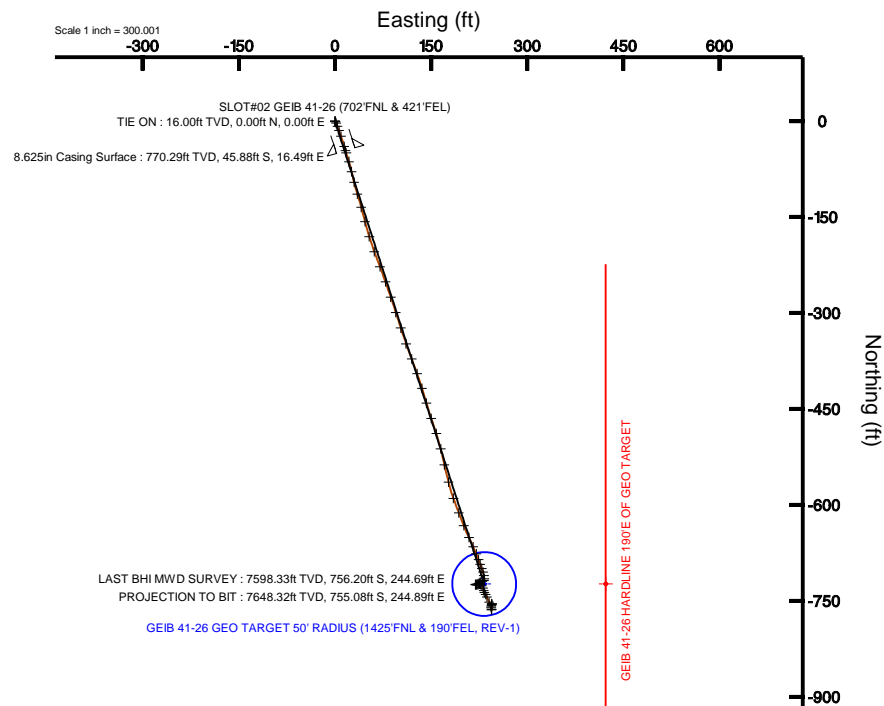
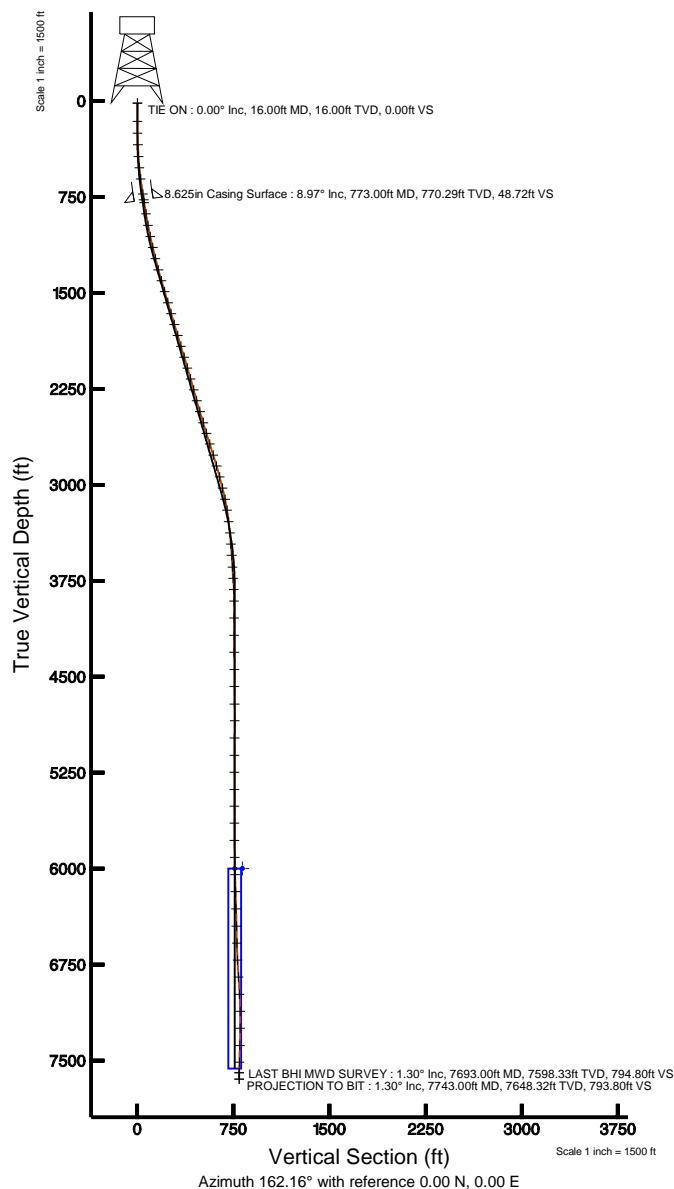


# KERR MCGEE OIL & GAS ONSHORE LP

Location: COLORADO Slot: SLOT#02 GEIB 41-26 (702'FNL & 421'FEL)  
 Field: WELD COUNTY (KERR MCGEE) Well: GEIB 41-26  
 Facility: SEC.26-T5N-R65W Wellbore: GEIB 41-26 PWB

Plot reference wellpath is GEIB 41-26 (REV-A.0) PWP

True vertical depths are referenced to XTREME 6 (RKB)	Grid System: NAD83 / Lambert Colorado State Planes, Northern Zone (501), US feet
Measured depths are referenced to XTREME 6 (RKB)	North Reference: True north
XTREME 6 (RKB) to Mean Sea Level: 4658 feet	Scale: True distance
Mean Sea Level to Mud line (Facility: SEC.26-T5N-R65W): 0 feet	Depths are in feet
Coordinates are in feet referenced to Slot	Created by: painsetr on 3/24/2011



BGGM (1945.0 to 2012.0) Dip: 67.08° Field: 53184.6 nT  
 Magnetic North is 8.79 degrees East of True North (at 2/25/2011)

To correct azimuth from Magnetic to True add 8.79 degrees  
 For example: If the Magnetic North Azimuth = 90 degs, then the Grid North Azimuth = 90 + 8.79 = 98.79



# Actual Wellpath Report

GEIB 41-26 AWP

Page 1 of 6



INTEQ

## REFERENCE WELLPATH IDENTIFICATION

Operator	KERR MCGEE OIL & GAS ONSHORE LP	Slot	SLOT#02 GEIB 41-26 (702'FNL & 421'FEL)
Area	COLORADO	Well	GEIB 41-26
Field	WELD COUNTY (KERR MCGEE)	Wellbore	GEIB 41-26 AWB
Facility	SEC.26-T5N-R65W		

## REPORT SETUP INFORMATION

Projection System	NAD83 / Lambert Colorado State Planes, Northern Zone (501), US feet	Software System	WellArchitect® 2.0
North Reference	True	User	Painsetr
Scale	0.999959	Report Generated	3/24/2011 at 9:28:55 AM
Convergence at slot	0.57° East	Database/Source file	WA_DENVER/GEIB_41-26_AWB.xml

## WELLPATH LOCATION

	Local coordinates		Grid coordinates		Geographic coordinates	
	North[ft]	East[ft]	Easting[USft]	Northing[USft]	Latitude	Longitude
Slot Location	-15.67	0.00	3244469.28	1380853.82	40°22'31.890"N	104°37'21.101"W
Facility Reference Pt			3244469.12	1380869.48	40°22'32.045"N	104°37'21.101"W
Field Reference Pt			3197771.84	1268891.29	40°04'09.600"N	104°47'36.000"W

## WELLPATH DATUM

Calculation method	Minimum curvature	XTREME 6 (RKB) to Facility Vertical Datum	4658.00ft
Horizontal Reference Pt	Slot	XTREME 6 (RKB) to Mean Sea Level	4658.00ft
Vertical Reference Pt	XTREME 6 (RKB)	Facility Vertical Datum to Mud Line (Facility)	0.00ft
MD Reference Pt	XTREME 6 (RKB)	Section Origin	N 0.00, E 0.00 ft
Field Vertical Reference	Mean Sea Level	Section Azimuth	162.16°



# Actual Wellpath Report

GEIB 41-26 AWP

Page 2 of 6



INTEQ

## REFERENCE WELLPATH IDENTIFICATION

Operator	KERR MCGEE OIL & GAS ONSHORE LP	Slot	SLOT#02 GEIB 41-26 (702'FNL & 421'FEL)
Area	COLORADO	Well	GEIB 41-26
Field	WELD COUNTY (KERR MCGEE)	Wellbore	GEIB 41-26 AWB
Facility	SEC.26-T5N-R65W		

## WELLPATH DATA (75 stations) † = interpolated/extrapolated station

MD [ft]	Inclination [°]	Azimuth [°]	TVD [ft]	Vert Sect [ft]	North [ft]	East [ft]	DLS [°/100ft]	Comments
0.00†	0.000	103.700	0.00	0.00	0.00	0.00	0.00	
16.00	0.000	103.700	16.00	0.00	0.00	0.00	0.00	TIE ON
158.00	0.100	103.700	158.00	0.06	-0.03	0.12	0.07	
250.00	0.800	148.000	250.00	0.73	-0.59	0.54	0.80	
341.00	2.600	155.400	340.95	3.40	-3.01	1.73	1.99	
432.00	4.000	157.500	431.80	8.61	-7.82	3.81	1.54	
520.00	5.100	160.300	519.52	15.58	-14.34	6.30	1.27	
610.00	7.200	161.000	609.00	25.22	-23.44	9.49	2.33	
728.00	8.900	163.500	725.83	41.74	-39.18	14.49	1.47	
796.00	9.000	163.100	793.00	52.31	-49.31	17.53	0.17	
886.00	9.500	163.100	881.83	66.78	-63.16	21.73	0.56	
977.00	11.100	166.700	971.36	83.02	-78.87	25.93	1.89	
1065.00	11.300	167.700	1057.69	100.04	-95.53	29.72	0.32	
1154.00	13.600	161.400	1144.59	119.19	-113.97	34.91	3.00	
1243.00	14.300	165.600	1230.97	140.63	-134.54	40.98	1.38	
1333.00	15.300	165.600	1317.98	163.57	-156.81	46.70	1.11	
1423.00	16.400	162.400	1404.56	188.13	-180.42	53.50	1.56	
1512.00	16.400	160.700	1489.94	213.26	-204.25	61.45	0.54	
1601.00	16.300	158.900	1575.34	238.29	-227.76	70.10	0.58	
1690.00	16.400	160.700	1660.74	263.32	-251.27	78.75	0.58	
1779.00	16.400	161.000	1746.12	288.44	-275.01	86.99	0.10	
1868.00	16.800	162.800	1831.41	313.86	-299.18	94.88	0.73	
1956.00	16.900	162.100	1915.64	339.37	-323.50	102.58	0.26	
2046.00	16.700	160.000	2001.80	365.37	-348.10	111.02	0.71	
2135.00	16.400	159.600	2087.11	390.70	-371.89	119.77	0.36	
2224.00	15.800	160.300	2172.62	415.37	-395.08	128.24	0.71	
2313.00	15.600	162.400	2258.30	439.44	-417.89	135.94	0.68	
2400.00	16.400	163.800	2341.93	463.42	-440.84	142.90	1.02	
2490.00	16.000	161.700	2428.35	488.52	-464.81	150.34	0.79	
2579.00	16.700	161.700	2513.75	513.57	-488.60	158.21	0.79	



# Actual Wellpath Report

GEIB 41-26 AWP

Page 3 of 6



INTEQ

## REFERENCE WELLPATH IDENTIFICATION

Operator	KERR MCGEE OIL & GAS ONSHORE LP	Slot	SLOT#02 GEIB 41-26 (702'FNL & 421'FEL)
Area	COLORADO	Well	GEIB 41-26
Field	WELD COUNTY (KERR MCGEE)	Wellbore	GEIB 41-26 AWB
Facility	SEC.26-T5N-R65W		

## WELLPATH DATA (75 stations)

MD [ft]	Inclination [°]	Azimuth [°]	TVD [ft]	Vert Sect [ft]	North [ft]	East [ft]	DLS [°/100ft]	Comments
2666.00	16.700	166.700	2597.09	538.54	-512.63	165.01	1.65	
2753.00	17.600	167.400	2680.22	564.10	-537.64	170.75	1.06	
2844.00	17.800	165.600	2766.91	591.68	-564.53	177.22	0.64	
2934.00	16.500	160.300	2852.92	618.19	-589.89	184.95	2.26	
3023.00	14.900	159.600	2938.59	642.25	-612.52	193.19	1.81	
3112.00	13.400	158.200	3024.89	663.97	-632.82	201.01	1.73	
3202.00	12.400	154.400	3112.62	683.95	-651.22	209.06	1.46	
3290.00	8.600	156.100	3199.13	699.86	-665.76	215.81	4.33	
3379.00	6.900	157.900	3287.31	711.81	-676.80	220.52	1.93	
3468.00	5.700	158.600	3375.77	721.56	-685.87	224.14	1.35	
3556.00	4.600	161.700	3463.42	729.45	-693.29	226.85	1.29	
3645.00	4.000	159.300	3552.17	736.12	-699.58	229.06	0.70	
3736.00	3.500	161.700	3642.97	742.06	-705.18	231.06	0.58	
3825.00	4.000	170.500	3731.78	747.85	-710.83	232.42	0.86	
3913.00	2.600	176.500	3819.63	752.82	-715.84	233.05	1.64	
4001.00	0.500	228.500	3907.60	754.91	-718.09	232.89	2.64	
4136.00	0.700	240.500	4042.59	755.31	-718.89	231.73	0.17	
4271.00	1.300	251.000	4177.57	755.51	-719.79	229.56	0.46	
4403.00	1.600	244.700	4309.53	755.78	-721.07	226.48	0.26	
4537.00	0.900	192.000	4443.50	756.94	-722.90	224.57	0.95	
4671.00	0.800	62.200	4577.49	757.69	-723.49	225.18	1.15	
4807.00	1.300	221.900	4713.48	758.30	-724.20	224.99	1.52	
4939.00	0.900	261.200	4845.46	758.89	-725.47	222.96	0.63	
5074.00	0.600	286.000	4980.45	758.33	-725.44	221.24	0.32	
5209.00	0.400	273.900	5115.44	757.76	-725.21	220.09	0.17	
5342.00	0.200	313.300	5248.44	757.39	-725.02	219.46	0.21	
5476.00	0.200	50.000	5382.44	757.10	-724.71	219.46	0.22	
5607.00	0.500	71.700	5513.44	757.01	-724.38	220.18	0.25	
5738.00	1.200	80.200	5644.42	757.19	-723.97	222.08	0.54	
5874.00	1.100	92.500	5780.40	757.85	-723.78	224.78	0.20	



# Actual Wellpath Report

GEIB 41-26 AWP

Page 4 of 6



INTEQ

## REFERENCE WELLPATH IDENTIFICATION

Operator	KERR MCGEE OIL & GAS ONSHORE LP	Slot	SLOT#02 GEIB 41-26 (702'FNL & 421'FEL)
Area	COLORADO	Well	GEIB 41-26
Field	WELD COUNTY (KERR MCGEE)	Wellbore	GEIB 41-26 AWB
Facility	SEC.26-T5N-R65W		

## WELLPATH DATA (75 stations)

MD [ft]	Inclination [°]	Azimuth [°]	TVD [ft]	Vert Sect [ft]	North [ft]	East [ft]	DLS [°/100ft]	Comments
6008.00	1.100	124.500	5914.37	759.31	-724.57	227.13	0.45	
6142.00	1.500	144.200	6048.34	762.00	-726.72	229.21	0.44	
6276.00	2.100	161.400	6182.27	766.12	-730.47	231.02	0.60	
6409.00	1.300	163.800	6315.21	770.07	-734.23	232.22	0.60	
6544.00	1.600	159.000	6450.17	773.48	-737.46	233.32	0.24	
6678.00	1.300	132.200	6584.13	776.66	-740.22	235.12	0.55	
6811.00	2.900	162.800	6717.04	781.33	-744.45	237.23	1.43	
6944.00	4.500	153.600	6849.76	789.86	-752.34	240.55	1.28	
7078.00	2.300	162.400	6983.52	797.75	-759.61	243.70	1.68	
7212.00	1.400	178.600	7117.44	802.01	-763.81	244.55	0.77	
7344.00	0.900	337.200	7249.43	802.52	-764.47	244.19	1.71	
7479.00	1.800	4.600	7384.40	799.50	-761.38	243.95	0.80	
7610.00	1.200	10.600	7515.35	796.40	-757.98	244.37	0.47	
7693.00	1.300	10.200	7598.33	794.80	-756.20	244.69	0.12	LAST BHI MWD SURVEY
7743.00	1.300	10.200	7648.32	793.80	-755.08	244.89	0.00	PROJECTION TO BIT

## HOLE & CASING SECTIONS Ref Wellbore: GEIB 41-26 AWB Ref Wellpath: GEIB 41-26 AWP

String/Diameter	Start MD [ft]	End MD [ft]	Interval [ft]	Start TVD [ft]	End TVD [ft]	Start N/S [ft]	Start E/W [ft]	End N/S [ft]	End E/W [ft]
8.625in Casing Surface	16.00	773.00	757.00	16.00	770.29	0.00	0.00	-45.88	16.49
7.875in Open Hole	783.00	7743.00	6960.00	780.16	7648.32	-47.37	16.94	-755.08	244.89



# Actual Wellpath Report

GEIB 41-26 AWP

Page 5 of 6



INTEQ

## REFERENCE WELLPATH IDENTIFICATION

Operator	KERR MCGEE OIL & GAS ONSHORE LP	Slot	SLOT#02 GEIB 41-26 (702'FNL & 421'FEL)
Area	COLORADO	Well	GEIB 41-26
Field	WELD COUNTY (KERR MCGEE)	Wellbore	GEIB 41-26 AWB
Facility	SEC.26-T5N-R65W		

## TARGETS

Name	MD [ft]	TVD [ft]	North [ft]	East [ft]	Grid East [srv ft]	Grid North [srv ft]	Latitude	Longitude	Shape
GEIB 41-26 GEO TARGET 50' RADIUS (1425'FNL & 190'FEL, REV-1)		6000.00	-723.88	232.94	3244709.36	1380132.30	40°22'24.737"N	104°37'18.091"W	circle
GEIB 41-26 HARDLINE 190'E OF GEO TARGET		6000.00	-723.88	422.94	3244899.34	1380134.19	40°22'24.737"N	104°37'15.636"W	point

## WELLPATH COMPOSITION Ref Wellbore: GEIB 41-26 AWB Ref Wellpath: GEIB 41-26 AWP

Start MD [ft]	End MD [ft]	Positional Uncertainty Model	Log Name/Comment	Wellbore
16.00	796.00	NaviTrak (Standard)	BHI MWD SURVEYS 12.25 HOLE<158-796>	GEIB 41-26 AWB
796.00	7693.00	NaviTrak (Standard)	BHI MWD SURVEYS 7 7/8 HOLE<886-7693>	GEIB 41-26 AWB
7693.00	7743.00	Blind Drilling (std)	Projection to bit	GEIB 41-26 AWB



# Actual Wellpath Report

GEIB 41-26 AWP

Page 6 of 6



**INTEQ**

## REFERENCE WELLPATH IDENTIFICATION

Operator	KERR MCGEE OIL & GAS ONSHORE LP	Slot	SLOT#02 GEIB 41-26 (702'FNL & 421'FEL)
Area	COLORADO	Well	GEIB 41-26
Field	WELD COUNTY (KERR MCGEE)	Wellbore	GEIB 41-26 AWB
Facility	SEC.26-T5N-R65W		

## WELLPATH COMMENTS

MD [ft]	Inclination [°]	Azimuth [°]	TVD [ft]	Comment
16.00	0.000	103.700	16.00	TIE ON
7693.00	1.300	10.200	7598.33	LAST BHI MWD SURVEY
7743.00	1.300	10.200	7648.32	PROJECTION TO BIT