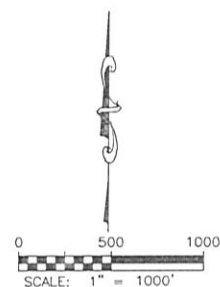
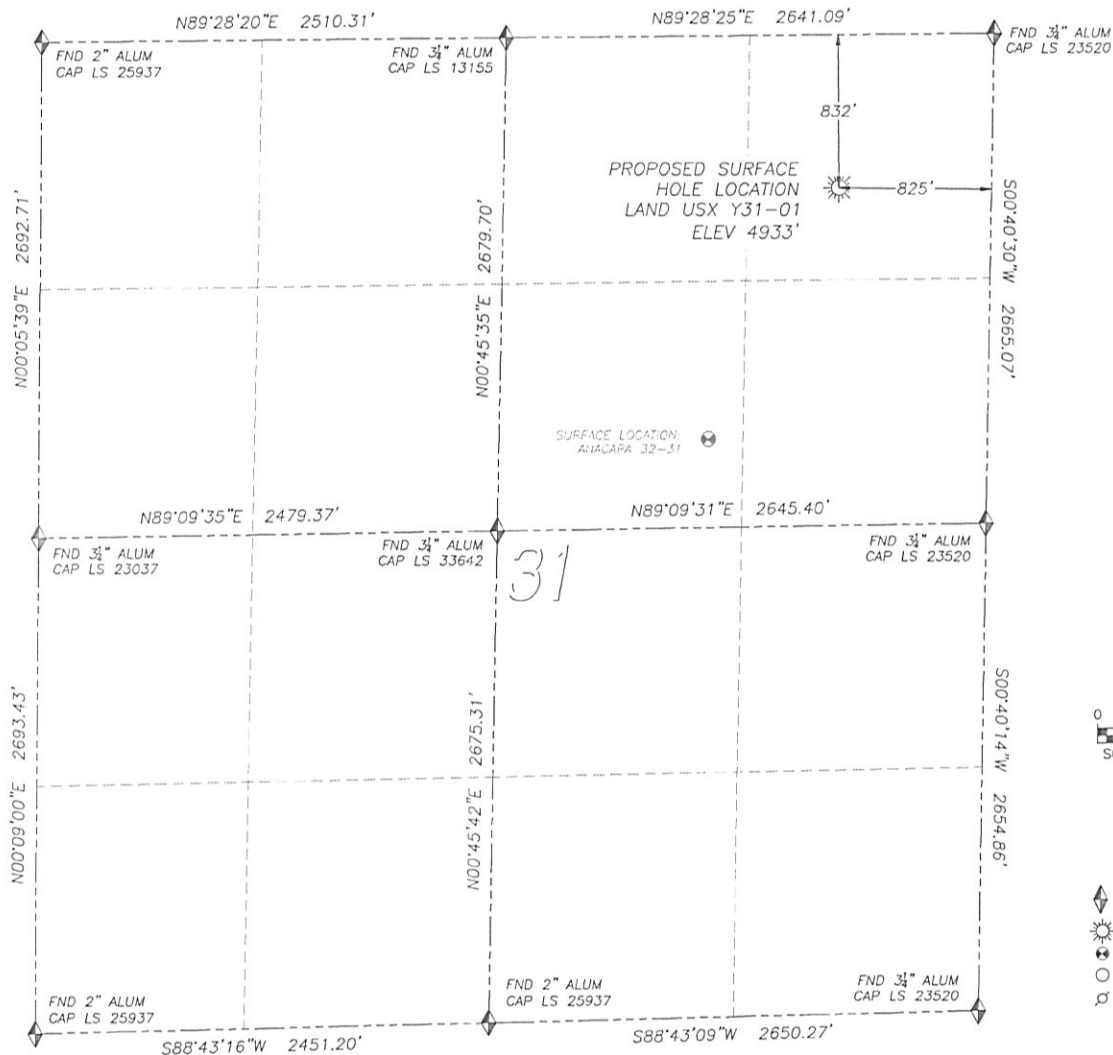


# WELL LOCATION CERTIFICATE LAND USX Y31-01

SECTION 31, TOWNSHIP 2 NORTH, RANGE 64 WEST OF THE 6TH PRINCIPAL MERIDIAN



- LEGEND**
- ◆ FOUND MONUMENT AS DESCRIBED
  - ☀ PROPOSED WELL
  - EXISTING WELL
  - BOTTOM HOLE
  - ⊗ ABANDONED WELL

## NAD 83 LATITUDE AND LONGITUDE

LAND USX Y31-01 SURFACE HOLE:

LATITUDE: N40.10002'  
LONGITUDE: W104.58721'  
ELEVATION: 4933'  
FOOTAGE: 832' FNL, 825' FEL  
PDOP: 1.5  
QTR/QTR: NE4/NE4  
PROP LINE: 350'± WEST

IN ACCORDANCE WITH A REQUEST FROM MATT CAMPBELL OF NOBLE ENERGY INC., DALEY LAND SURVEYING, INC. HAS DETERMINED THE SURFACE LOCATION OF THE LAND USX Y31-01 WELL TO BE 832' FNL, 825' FEL, AS MEASURED AT NINETY (90) DEGREES FROM THE SECTION LINES OF SECTION 31, TOWNSHIP 2 NORTH, RANGE 64 WEST OF THE 6TH PRINCIPAL MERIDIAN, WELD COUNTY, COLORADO.

I HEREBY CERTIFY THAT THIS WELL LOCATION CERTIFICATE WAS PREPARED BY ME OR UNDER MY DIRECT SUPERVISION, THAT THE WORK WAS COMPLETED ON 4/03/2011 FOR AND ON BEHALF OF NOBLE ENERGY, INC., AND THAT THIS MAP DOES NOT REPRESENT A BOUNDARY SURVEY. IT IS NOT A LAND SURVEY PLAT OR AN IMPROVEMENT SURVEY PLAT AND IT IS NOT TO BE RELIED UPON FOR THE ESTABLISHMENT OF FENCE, BUILDING OR OTHER FUTURE IMPROVEMENT LINES.

## NOTES:

- 1) BEARINGS FOR THIS MAP ARE ASSUMED AND BASED UPON GPS OBSERVATIONS MADE BETWEEN MONUMENTS LOCATED AT THE NORTHEAST CORNER AND EAST QUARTER CORNER OF SECTION 31, T.2N., R.64W.
- 2) HORIZONTAL DATUM IS NAD83.
- 3) VERTICAL DATUM IS NAVD88. ELEVATIONS ARE DERIVED FROM GPS OBSERVATIONS PROCESSED THROUGH OPUS, UTILIZING THE GEOID03 MODEL.
- 4) SEE LOCATION DRAWING FOR VISIBLE IMPROVEMENTS WITHIN 600' OF PROPOSED SURFACE HOLE LOCATION.
- 5) SURFACE USE: AGRICULTURAL.

**NEAREST EXISTING WELL:**  
ANACAPA 32-31 SURFACE HOLE  
LATITUDE: N40.09627'  
LONGITUDE: W104.58972'  
ELEVATION: 4891'  
1538' SOUTHWEST

NOTICE: According to Colorado law you MUST commence any legal action based upon any defect in this W.L.C. within three years after you first discover such defect. In no event may any action based upon any such defect in this W.L.C. be commenced more than ten years from the date of the certification shown hereon.



FOR AND ON BEHALF OF:  
DALEY LAND SURVEYING INC.,  
Robert Daley, PLS 35597

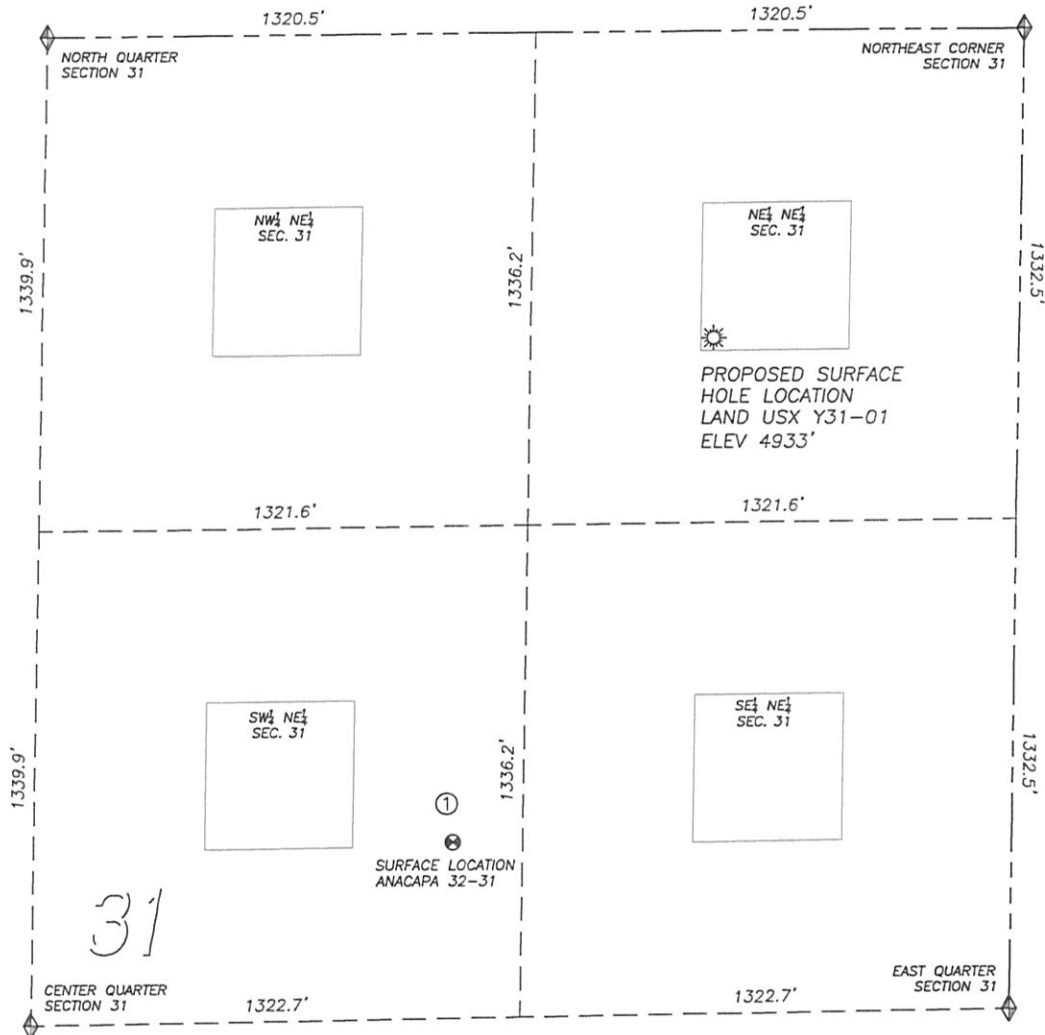
DALEY LAND SURVEYING, INC.

PARKER, CO. 80134

303 953 9841

# SITE SKETCH LAND USX Y31-01

SECTION 31, TOWNSHIP 2 NORTH, RANGE 64 WEST OF THE 6TH PRINCIPAL MERIDIAN



①

ANACAPA 32-31  
SW/NE SEC. 31  
2195' FNL, 1511' FEL  
1538' SW OF PROPOSED  
SURFACE HOLE LOCATION  
LAT. N40.09627°  
LONG. W104.58972°  
EL: 4981'  
PDOP 2.0

## NOTES:

- 1) THIS DOES NOT REPRESENT A BOUNDARY SURVEY
- 2) THE LATITUDES AND LONGITUDES SHOWN ARE REFERENCED TO NAD83
- 3) DATUM FOR ELEVATION IS NAVD88. ELEVATIONS ARE DERIVED FROM GPS-RTK OBSERVATIONS PROCESSED THROUGH OPUS, UTILIZING THE GEOID03 MODEL.