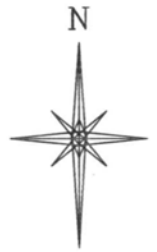
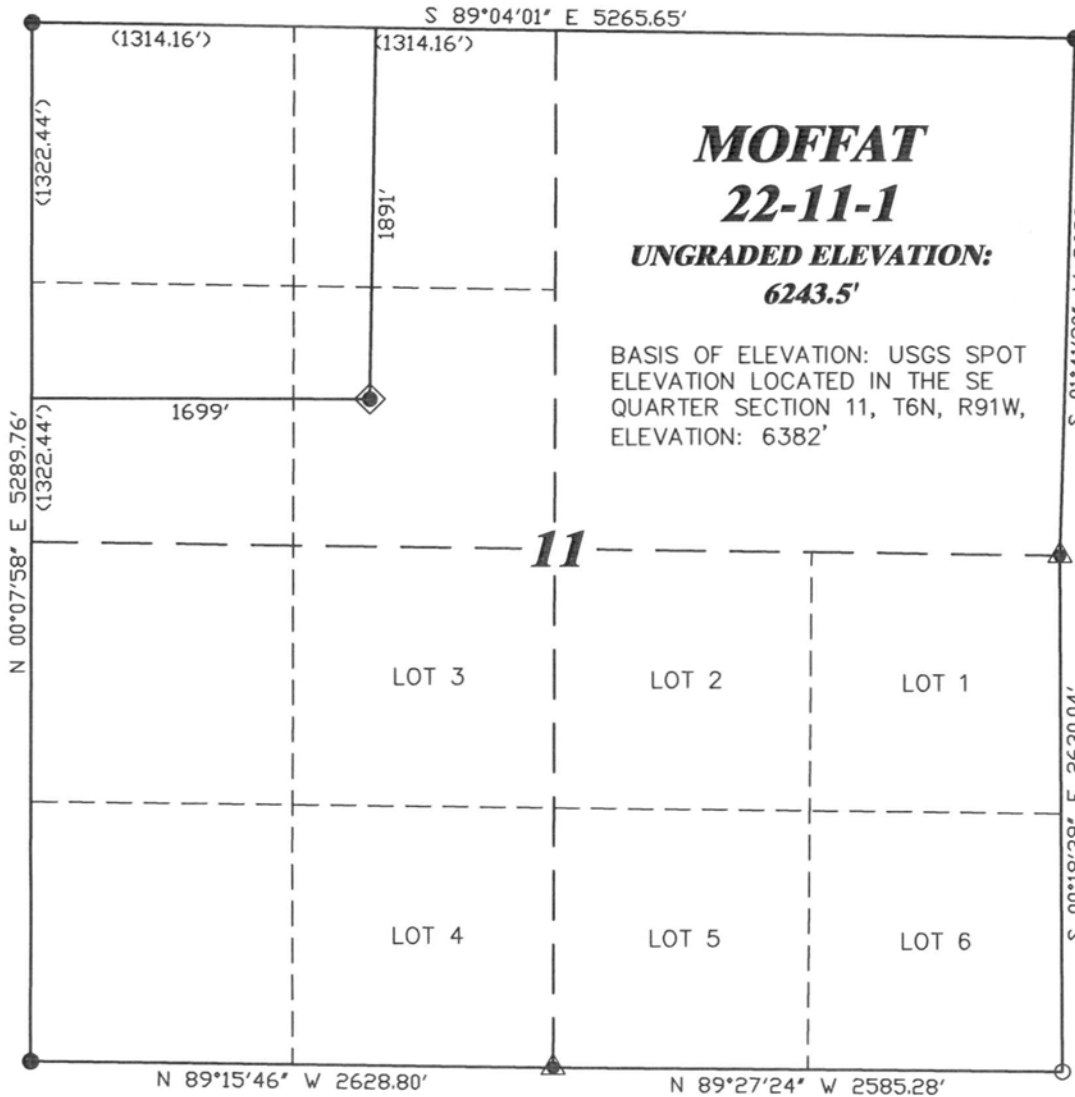


**R. 91 W.**



SCALE 1" = 1000'

**T. 6 N.**

**LATITUDE (NAD 83)**  
NORTH 40.494343 DEG.  
**LONGITUDE (NAD 83)**  
WEST 107.575264 DEG.

**LATITUDE (NAD 27)**  
NORTH 40.494371 DEG.  
**LONGITUDE (NAD 27)**  
WEST 107.574642 DEG.

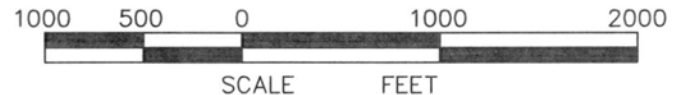
**NORTHING**  
429682.10  
**EASTING**  
1423032.23

**BASIS OF BEARING/DATUM**  
SPCS CO NORTH NAD 27  
BASED ON DRG CONTROL POINT  
"CP 14-6-90"

**NOTES**

HIGH PLATEAU DESERT  
NO EXISTING FEATURES WITHIN  
400' RADIUS OF WELL SITE.

GPS OPERATOR PATRICK MCLINSKEY  
OBSERVED A PDOP OF 2.4.  
ALL GPS OBSERVATIONS ARE IN  
COMPLIANCE WITH COGCC RULE No.215.



**SURVEYOR'S STATEMENT**

I, CHARLES F. WOOD, OF ROCK SPRINGS, WYOMING, HEREBY STATE: THIS MAP WAS MADE FROM NOTES TAKEN DURING AN ACTUAL FIELD SURVEY DONE UNDER MY DIRECT SUPERVISION ON MAY 24, 2011 AND THAT THIS PLAT CORRECTLY SHOWS THE LOCATION OF MOFFAT 22-11-1 AS STAKED ON THE GROUND.

**LEGEND**

- ◆ WELL LOCATION
- BOTTOM HOLE LOC. (APPROX)
- FOUND MONUMENT
- ▲ PREVIOUSLY FOUND MONUMENT
- CALCULATED CORNER



**RIFFIN & ASSOCIATES, INC.**  
1414 ELK ST., ROCK SPRINGS, WY 82901

(307) 362-5028

**DRAWN: 5/26/11 - JMB**

**SCALE: 1" = 1000'**

**REVISED: 6/08/11 - KRH**

**DRG JOB No. 18611**

**REVISED WELL NAME**

**EXHIBIT 1**

**PLAT OF DRILLING LOCATION  
FOR  
GULFPORT ENERGY CORPORATION**  
**1981' F/NL & 1699' F/WL, SE NW, SECTION 11,  
T. 6 N., R. 91 W., 6th P.M.  
MOFFAT COUNTY, COLORADO**