

# ENSIGN

## Directional

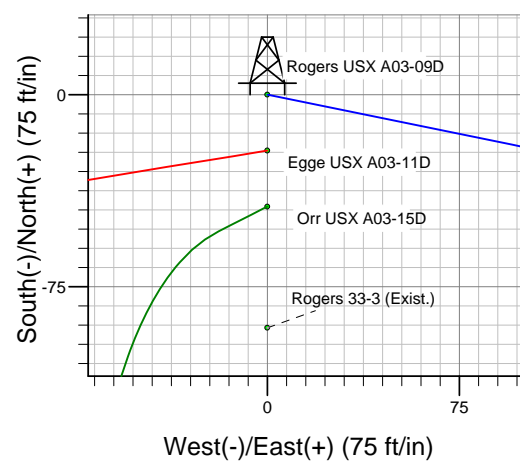
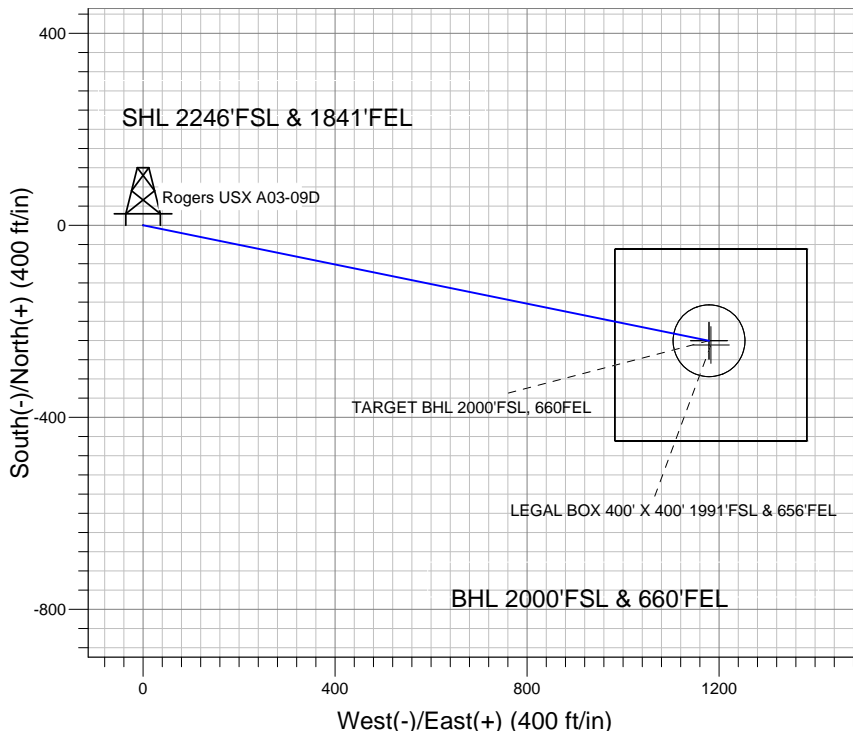
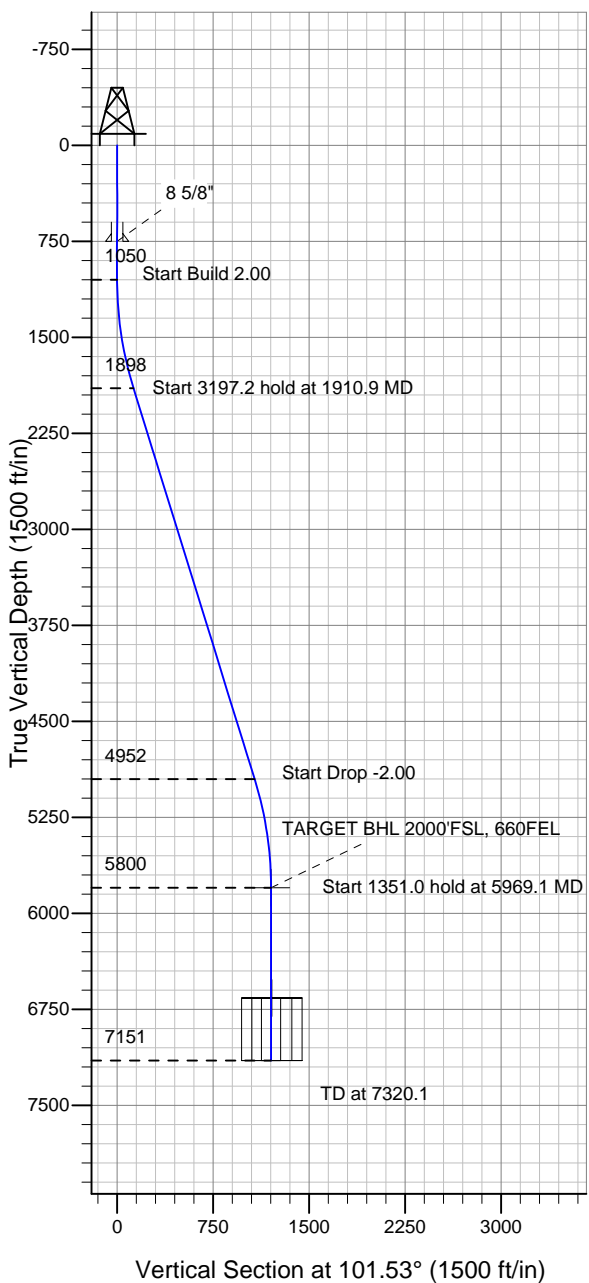
### Well Name: Rogers USX A03-09D

Surface Location: Rogers, Egge, and Orr Pad Sec.3-T6N-R64W  
North American Datum 1983 , US State Plane 1983 , Colorado Northern Zone

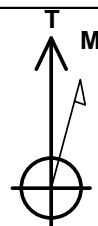
Ground Elevation: 4768.0

+N/-S +E/-W Northing Easting Latitude Longitude Slot  
0.0 0.0 1431606.73 3268766.21 40.514140 -104.533340  
Original Well Elev WELL @ 4781.0ft (Original Well Elev)

### NOBLE ENERGY INC WELD COUNTY CO



Rogers, Egge, and Orr Pad Sec.3-T6N-R64W  
Rogers USX A03-09D  
Noble Rogers USX A03-09D Plan #1 (6-01-11)  
18:05, June 10 2011



Azimuths to True North  
Magnetic North: 8.75°

Magnetic Field  
Strength: 53220.6snT  
Dip Angle: 67.18°  
Date: 6/1/2011  
Model: IGRF2010

### WELLBORE TARGET DETAILS (LAT/LONG)

Name	TVD	+N/-S	+E/-W	Latitude	Longitude	Shape
TARGET BHL 2000'FSL, 660'FEL	5800.0	-240.4	1178.9	40.513480	-104.529100	Point
LEGAL BOX 400' X 400' 1991'FSL & 656'FEL	6661.0	-249.4	1182.9	40.513455	-104.529086	Rectangle (Sides: L400.0 W400.0)
TARGET CIRCLE 2000'FSL & 660'FEL	6661.0	-240.4	1178.9	40.513480	-104.529100	Circle (Radius: 75.0)

### SECTION DETAILS

Sec	MD	Inc	Azi	TVD	+N/-S	+E/-W	DLeg	TFace	VSec	Target
1	0.0	0.00	0.00	0.0	0.0	0.0	0.00	0.00	0.0	
2	1050.0	0.00	0.00	1050.0	0.0	0.0	0.00	0.00	0.0	
3	1910.9	17.22	101.53	1898.0	-25.7	125.8	2.00	101.53	128.4	
4	5108.2	17.22	101.53	4952.0	-214.8	1053.1	0.00	0.00	1074.8	
5	5969.1	0.00	0.00	5800.0	-240.4	1178.9	2.00	180.00	1203.2	TARGET BHL 2000'FSL, 660'FEL
6	7320.1	0.00	0.00	7151.0	-240.4	1178.9	0.00	0.00	1203.2	