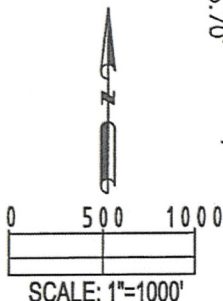
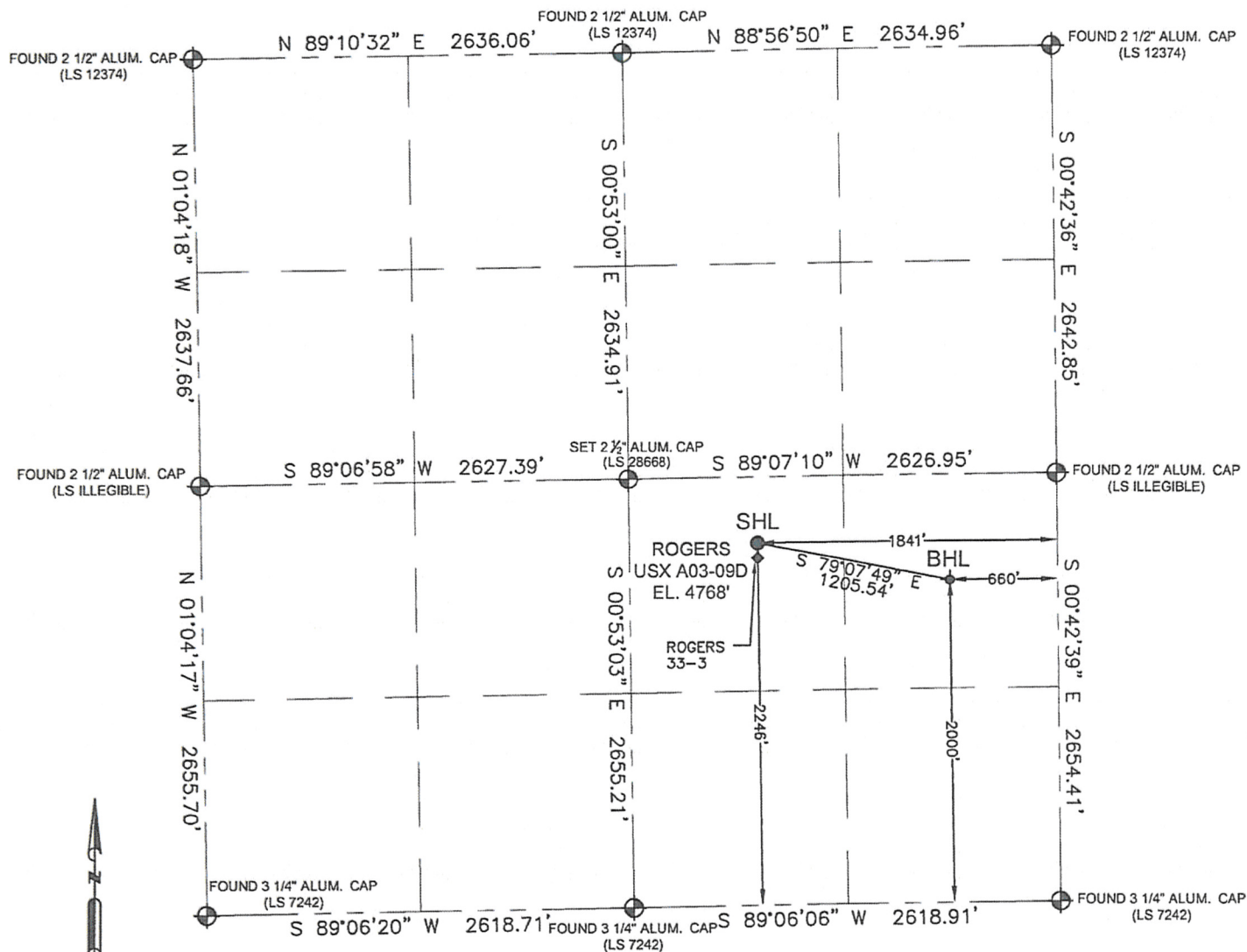


WELL LOCATION CERTIFICATE

THIS MAP DOES NOT REPRESENT A BOUNDARY SURVEY

SECTION: 3
TOWNSHIP: 6N
RANGE: 64W

In accordance with a request from CJ Pietri with Noble Energy Inc.

Petroleum Field Services, LLC has determined the surface location of the ROGERS USX A03-09D to be 2246' from the SOUTH line and 1841' from the EAST line and the bottom hole to be 2000' from the SOUTH line and 660' from the EAST line as measured at right angles from the section line of Section 3, Township 6 North, Range 64 West of the Sixth Principal Meridian, County of WELD, State of Colorado.

I hereby state that this Well Location Certificate was prepared by me, or under my direct supervision, that the fieldwork was completed on 3/31/11, for and on behalf of Noble Energy Inc., that this is not a Land Survey Plat or an Improvement Survey Plat, and that it is not to be relied upon for establishment of fence, building, or other future improvement lines.

Note:

- 1) Bearings shown are Grid Bearings of the Colorado State Plane Coordinate System, North Zone, North American Datum 1983/2007. The lineal dimensions as shown herein are grid distances based upon the "U.S. Survey Foot."
- 2) Ground elevations are based on an observed GPS elevation (NAVD 1988 DATUM).
- 3) NEAREST EXISTING WELL: ROGERS 33-3 IS 92' SOUTH
- 4) IMPROVEMENTS: See LOCATION DRAWING exhibit for all visible improvements within 400' of disturbed area.
- 5) SURFACE USE: PASTURE
- 6) INSTRUMENT OPERATOR: OWEN MCKEE

Note:

According to Colorado law, you must commence any legal action based upon any defect in this W.L.C. within three years after you first discover such defect. In no event, may any action based upon any defect in this survey be commenced more than ten years after the date of this certification shown hereon. (13-80-105 C.R.S.)

LEGEND

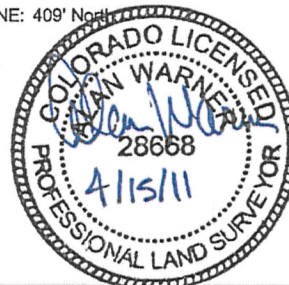
- ⊕ = FOUND MONUMENT
- = PROPOSED WELL
- ◆ = BOTTOM HOLE
- ◆ = EXISTING WELL

SURFACE LOCATION:

LATITUDE: 40.51414°N
LONGITUDE: 104.53334°W
PDOP: 1.5
ELEV: 4768'
¼¼ NW¼SE¼
NEAREST PROPERTY LINE: 409' North

BOTTOM HOLE:

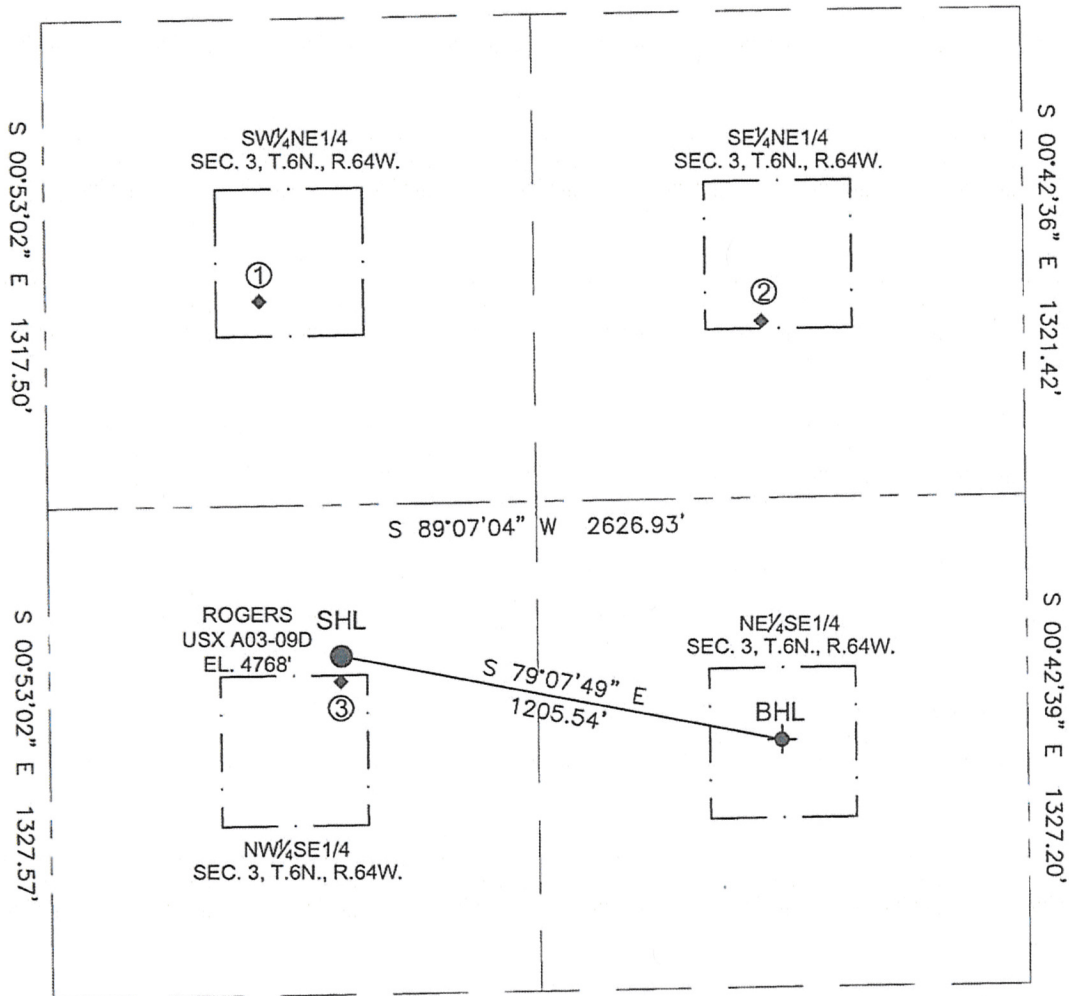
LATITUDE: 40.51348°N
LONGITUDE: 104.52910°W



ALAN WARNER, PLS 28668
COLORADO LICENSED PROFESSIONAL LAND SURVEYOR
FOR AND ON BEHALF OF P.F.S., LLC

SITE SKETCH

SECTION: 3
TOWNSHIP: 6N
RANGE: 64W



- | | | |
|--|---|--|
| ① DYER USX A3-7
SWNE
2082' FNL
2053' FEL
LAT-40.51679°N
LONG-104.53411°W
PDOP:1.5
ELEV: 4772' | ② DYER USX A3-8
SENE
2161' FNL
704' FEL
LAT-40.51660°N
LONG-104.52926°W
PDOP:1.5
ELEV: 4776' | ③ ROGERS 33-3
NWSE
2154' FSL
1841' FEL
LAT-40.51389°N
LONG-104.53334°W
PDOP:1.5
ELEV: 4768' |
|--|---|--|

LEGEND

- = PROPOSED WELL
- ⊙ = BOTTOM HOLE
- ◆ = EXISTING WELL

