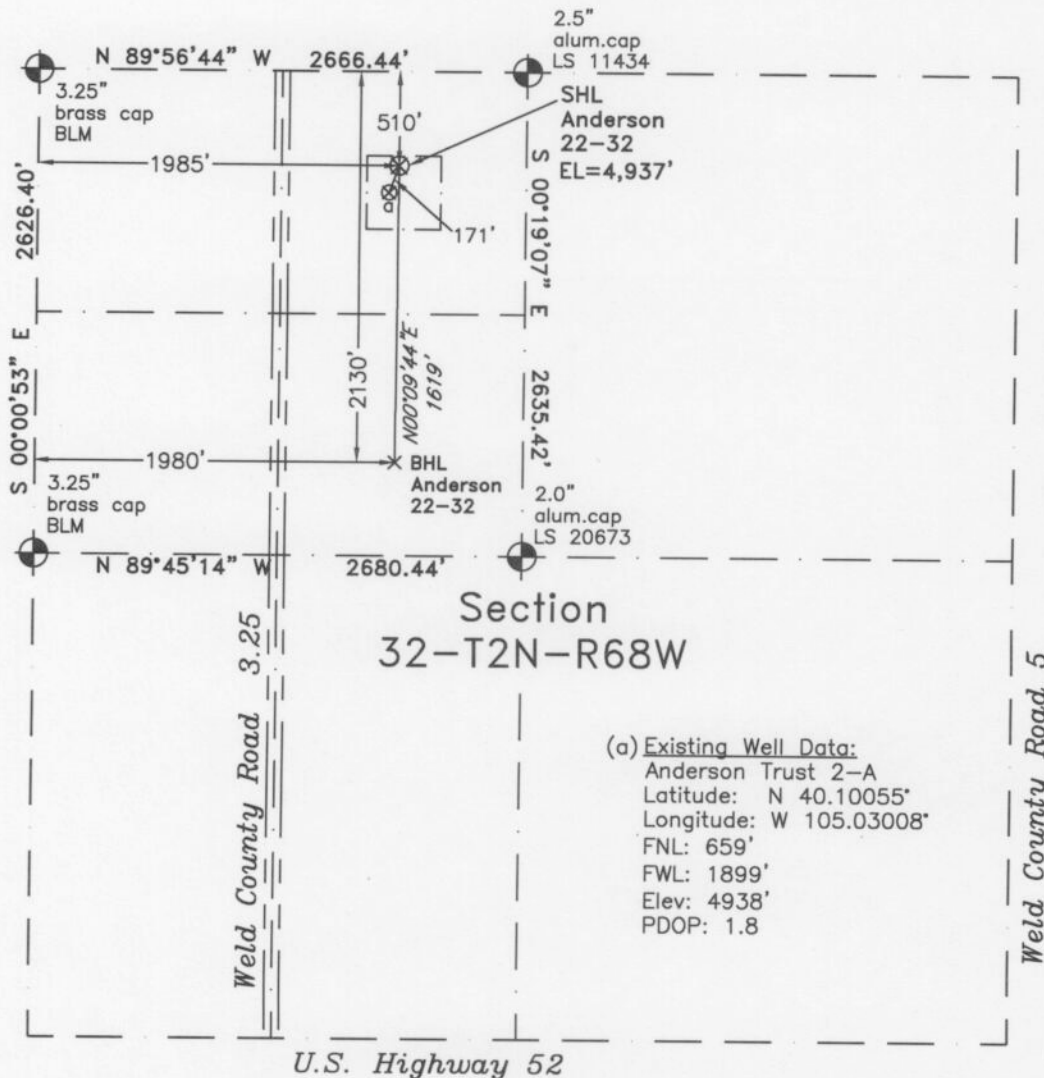


PLS Group, LLC
109 Coronado Ct. - Bldg 7
Fort Collins, Colorado 80525

WELL LOCATION CERTIFICATE

THIS MAP DOES NOT
REPRESENT A BOUNDARY SURVEY



Scale 1" = 1000'

1000'

approximate scale

LEGEND

— found survey monument

- - - improved road

- - - calculated dimension

(c)

(a) Existing Well Data:
Anderson Trust 2-A
Latitude: N 40.10055°
Longitude: W 105.03008°
FNL: 659'
FWL: 1899'
Elev: 4938'
PDOP: 1.8

In accordance with a request from Doug Pearlman of EnCana Oil & Gas (USA) Inc., PLS Group, LLC has determined the location of the **Anderson 22-32** well site to be SHL: 510' FNL and 1985' FWL, (BHL: 2130' FNL and 1980' FWL) as measured at ninety (90) degrees from the section lines of Section 32, Township 2 North, Range 68 West of the 6th Principal Meridian, Weld County, Colorado.

Proposed Surface Hole Data:

Latitude: N 40.10095° BHL(40.09651°)

Longitude: W 105.02977° BHL(105.02982°)

Nearest Building 314' southwest

Public Road 654' west

Property Line 650' west

PDOP: 1.2

Above Ground Utility 705' west
Railroad 13,000' southeast

Notes:

- 1) Bearings and distances based on NAD 83 Colorado North State Plane Coordinates using RTK GPS observations taken 11/19/10 by operator Craig Burke.
- 2) Conversion factor to ground (1.000274294).
- 3) Elevations based on NAVD 88 GPS heights and Geoid 2003 corrections.
- 4) See improvement map for visible improvements within 400 feet of pad site.
- 5) The location falls in an agricultural field.

I hereby certify that this Well Location Certificate was prepared by me or under my direct supervision on 11/24/10 for and on behalf of EnCana Oil & Gas (USA) Inc. This is not a Land Survey Plat or an improvement survey Plat and it is not to be relied upon for establishment of fences, buildings, or other improvements.

John Robert McGehee PLS#38219
Well: Anderson 22-32

NOTICE: According to Colorado law you MUST commence any legal action based upon any defect in this W.L.C. within 3 years after you first discover such defect. In no event may any action based upon any defect in this W.L.C. be commenced more than 10 years from this said date of the certification shown hereon.