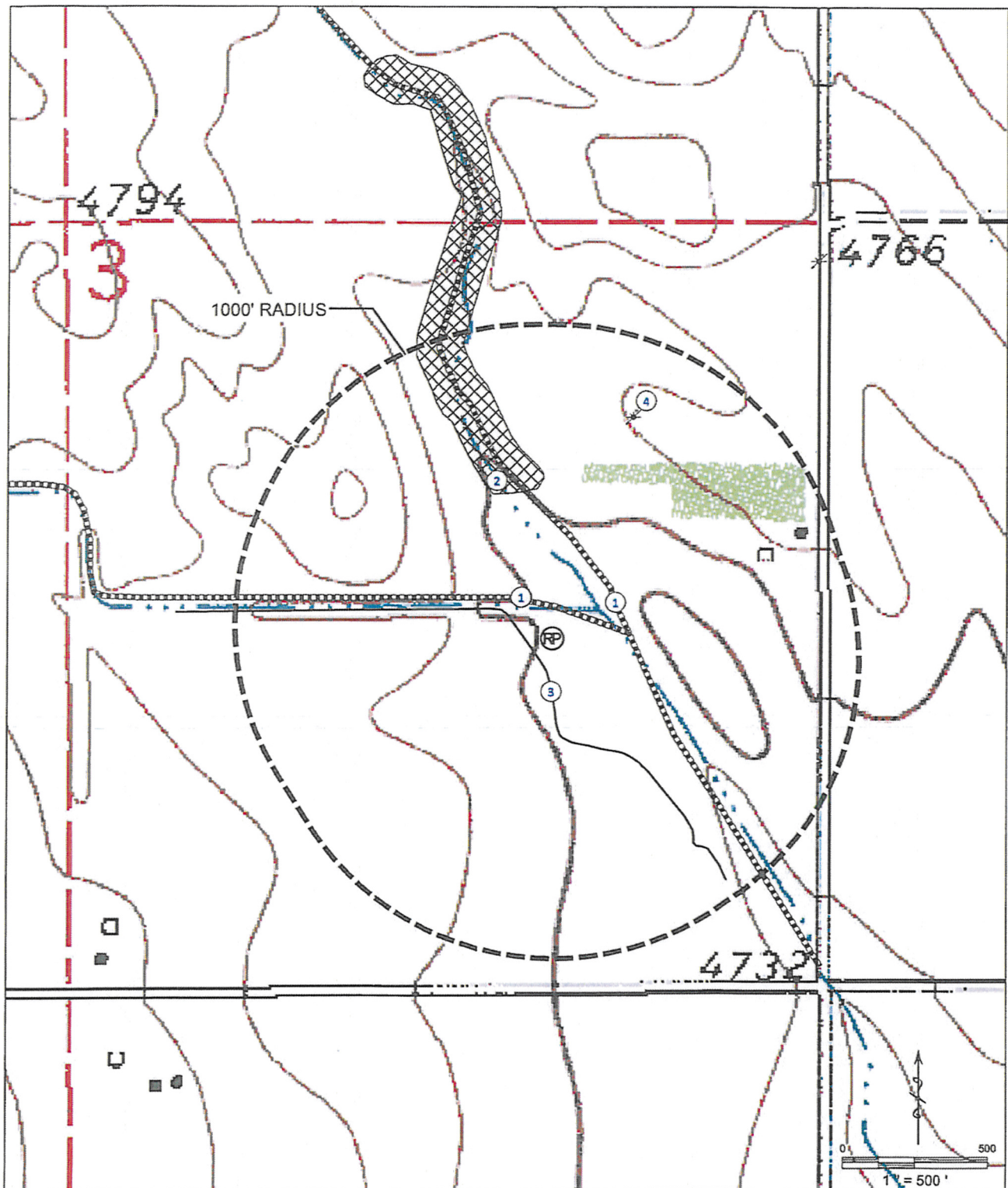


# HYDROLOGY MAP

ORR USX A03-15D FACILITY

SECTION: 3  
TOWNSHIP: 6N  
RANGE: 64W



① INTERMITTENT STREAMS 113' N, 249' NE.

② MARSHLAND AREA 521' NW.

③ DIRT IRRIGATION DITCH 78' SW.

④ WATER WELL 815' NE.