
NOBLE ENERGY INC E-BUSINESS

**RULISON FED 20-11A
RULISON
Garfield County , Colorado**

**Cement Surface Casing
03-Mar-2011**

Post Job Report

The Road to Excellence Starts with Safety

Sold To #: 345242	Ship To #: 2814376	Quote #:	Sales Order #: 7983629
Customer: NOBLE ENERGY INC E-BUSINESS		Customer Rep: Wilkerson, Kenny	
Well Name: RULISON FED	Well #: 20-11A	API/UWI #: 05-045-18781	
Field: RULISON	City (SAP): RIFLE	County/Parish: Garfield	State: Colorado
Lat: N 39.433 deg. OR N 39 deg. 25 min. 59.642 secs.		Long: W 107.918 deg. OR W -108 deg. 4 min. 56.071 secs.	
Contractor: H&P 322	Rig/Platform Name/Num: H&P 322		
Job Purpose: Cement Surface Casing			
Well Type: Development Well	Job Type: Cement Surface Casing		
Sales Person: METLI, MARSHALL	Srvc Supervisor: CALDWELL, JEFFREY	MBU ID Emp #: 369111	

Job Personnel

HES Emp Name	Exp Hrs	Emp #	HES Emp Name	Exp Hrs	Emp #	HES Emp Name	Exp Hrs	Emp #
CALDWELL, JEFFREY S	8	369111	DOUT, JACOB J	8	430298	LYNCH, JACK William	8	483039
MOAT, RYAN C	8	489025	YOUNG, JEREMY R	8	418013			

Equipment

HES Unit #	Distance-1 way	HES Unit #	Distance-1 way	HES Unit #	Distance-1 way	HES Unit #	Distance-1 way
10011429	60 mile	10784053	60 mile	10804567	60 mile	10951249	60 mile
11560046	60 mile	11562538	60 mile				

Job Hours

Date	On Location Hours	Operating Hours	Date	On Location Hours	Operating Hours	Date	On Location Hours	Operating Hours
03-03-11	8	1						

TOTAL Total is the sum of each column separately

Job

Formation Name	Formation Depth (MD)	Top	Bottom	Job	Job Times	Date	Time	Time Zone
					Called Out	02 - Mar - 2011	20:00	MST
Form Type			BHST		On Location	03 - Mar - 2011	01:00	MST
Job depth MD	1540. ft		Job Depth TVD	1540. ft	Job Started	03 - Mar - 2011	06:24	MST
Water Depth			Wk Ht Above Floor	-15. ft	Job Completed	03 - Mar - 2011	07:31	MST
Perforation Depth (MD)	From		To		Departed Loc	03 - Mar - 2011	09:00	MST

Well Data

Description	New / Used	Max pressure psig	Size in	ID in	Weight lbm/ft	Thread	Grade	Top MD ft	Bottom MD ft	Top TVD ft	Bottom TVD ft
-------------	------------	-------------------	---------	-------	---------------	--------	-------	-----------	--------------	------------	---------------

Tools and Accessories

Type	Size	Qty	Make	Depth	Type	Size	Qty	Make	Depth	Type	Size	Qty	Make
Guide Shoe					Packer					Top Plug	8 5/8	1	
Float Shoe					Bridge Plug					Bottom Plug			
Float Collar					Retainer					SSR plug set			
Insert Float										Plug Container			
Stage Tool										Centralizers			

Miscellaneous Materials

Gelling Agt	Conc	Surfactant	Conc	Acid Type	Qty	Conc	%
Treatment Fld	Conc	Inhibitor	Conc	Sand Type	Size	Qty	

Fluid Data

Stage/Plug #: 1													
Fluid #	Stage Type	Fluid Name	Qty	Qty uom	Mixing Density lbm/gal	Yield ft3/sk	Mix Fluid Gal/sk	Rate bbl/min	Total Mix Fluid Gal/sk				

Stage/Plug #: 1										
Fluid #	Stage Type	Fluid Name	Qty	Qty uom	Mixing Density lbm/gal	Yield ft ³ /sk	Mix Fluid Gal/sk	Rate bbl/min	Total Mix Fluid Gal/sk	
1	Fresh Water Spacer		20	bbl	.	.0	.0	4.0		
2	Lead Cement	VERSACEM (TM) SYSTEM (452010)	231	sacks	12.3	2.38	13.75	6.0	13.75	
3	Tail Cement	VERSACEM (TM) SYSTEM (452010)	133	sacks	12.8	2.11	11.75	5.0	11.75	
4	Displacement		62	bbl	.	.0	.0	5.0		
Calculated Values		Pressures		Volumes						
Displacement	89.2	Shut In: Instant		Lost Returns	0	Cement Slurry	147.9	Pad		
Top Of Cement	SURFACE	5 Min		Cement Returns	10	Actual Displacement	62	Treatment		
Frac Gradient		15 Min		Spacers	20	Load and Breakdown		Total Job	229.9	
Rates										
Circulating	4	Mixing		5	Displacement	5	Avg. Job	5		
Cement Left In Pipe	Amount	445 ft	Reason	WE SHUT DOWN DISP. EARLY AS PER COMPANY REP						
Frac Ring # 1 @	ID		Frac ring # 2 @	ID		Frac Ring # 3 @	ID		Frac Ring # 4 @	ID
The Information Stated Herein Is Correct				Customer Representative Signature						

The Road to Excellence Starts with Safety

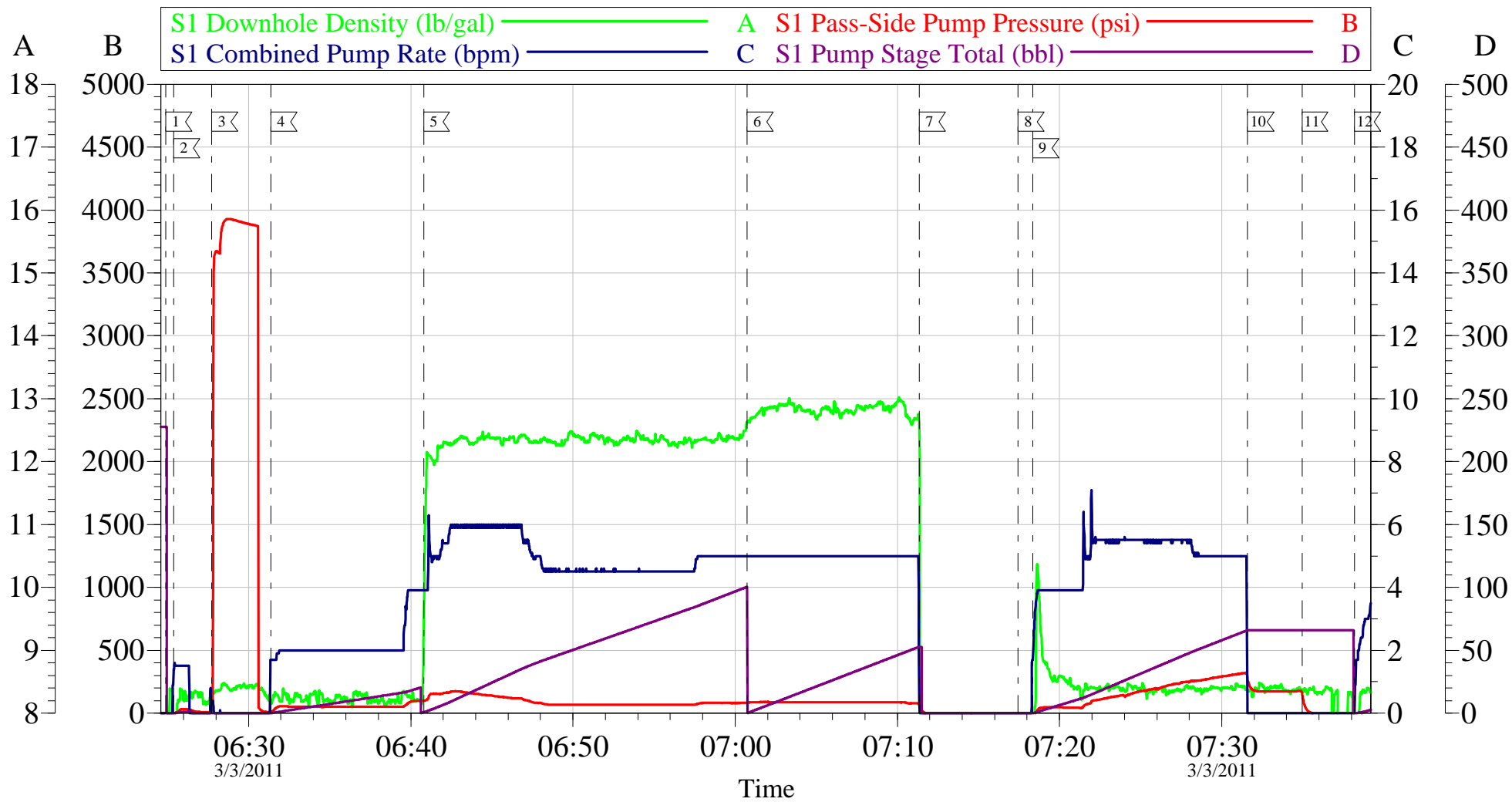
Sold To #: 345242	Ship To #: 2814376	Quote #:	Sales Order #: 7983629
Customer: NOBLE ENERGY INC E-BUSINESS		Customer Rep: Wilkerson, Kenny	
Well Name: RULISON FED		Well #: 20-11A	API/UWI #: 05-045-18781
Field: RULISON	City (SAP): RIFLE	County/Parish: Garfield	State: Colorado
Legal Description:			
Lat: N 39.433 deg. OR N 39 deg. 25 min. 59.642 secs.		Long: W 107.918 deg. OR W -108 deg. 4 min. 56.071 secs.	
Contractor: H&P 322		Rig/Platform Name/Num: H&P 322	
Job Purpose: Cement Surface Casing			Ticket Amount:
Well Type: Development Well		Job Type: Cement Surface Casing	
Sales Person: METLI, MARSHALL		Srv Supervisor: CALDWELL, JEFFREY	
		MBU ID Emp #: 369111	

Activity Description	Date/Time	Cht #	Rate bbl/min	Volume bbl		Pressure psig		Comments
				Stage	Total	Tubing	Casing	
Call Out	03/02/2011 20:00							ELITE #5
Pre-Convoy Safety Meeting	03/02/2011 22:40							ALL PERSONNEL ASSOCIATED WITH JOB ATTENDED.
Crew Leave Yard	03/02/2011 23:00							
Arrive At Loc	03/03/2011 01:00							CASING WAS STILL BEING RUN DOWN WELL.
Safety Meeting	03/03/2011 01:05							ALL PERSONNEL ASSOCIATED WITH JOB ATTENDED.
Rig-Up Equipment	03/03/2011 01:15							
Pre-Job Safety Meeting	03/03/2011 03:30							ALL PERSONNEL ASSOCIATED WITH JOB ATTENDED.
Wait on Customer or Customer Sub-Contractor Equip	03/03/2011 03:55							RIG CREW HAD PROBLEM SCREWING ON PUP LANDING JOINT TO WELL HEAD. THREADS WERE STRIPPED.
Start Job	03/03/2011 06:24							TD:1540', TP:1508', SJ:42.80', MUD:8.9 PPG, 12 1/4" OH.
Prime Pumps	03/03/2011 06:25		1.5	1.5			31.0	H2O
Test Lines	03/03/2011 06:27					3500.0		TEST GOOD
Pump Spacer	03/03/2011 06:31		4	20			90.0	H2O
Pump Lead Cement	03/03/2011 06:40		6	97.9			84.0	231 SKS 12.3 PPG 2.38 CUFT/SAK 13.75 GAL/SAK

Activity Description	Date/Time	Cht #	Rate bbl/min	Volume bbl		Pressure psig		Comments
				Stage	Total	Tubing	Casing	
Pump Tail Cement	03/03/2011 07:00		5	50			80.0	133 SKS 12.8 PPG 2.11 CUFT/SAK 11.75 GAL/SAK
Shutdown	03/03/2011 07:11							CEMENT JOB WAS PUMPED OFFLINE.
Drop Top Plug	03/03/2011 07:17							PLUG AWAY
Pump Displacement	03/03/2011 07:18		5.5	89.2			313.0	H2O
Slow Rate	03/03/2011 07:28		5	60			313.0	
Bump Plug	03/03/2011 07:31		5	62			321.0	PLUG DID NOT BUMP. AS PER COMPANY REP WE SHUT DOWN ONCE WE GOT 10 BBLs OF GOOD CEMENT BACK. APPROX. 445' OF CEMENT LEFT IN PIPE.
Check Floats	03/03/2011 07:34							FLOATS HELD, 1/4 BBL BACK. GOOD CIRCULATION THROUGH OUT JOB.
End Job	03/03/2011 07:38							
Post-Job Safety Meeting (Pre Rig-Down)	03/03/2011 07:39							ALL PERSONNEL ASSOCIATED WITH JOB ATTENDED.
Rig-Down Equipment	03/03/2011 07:40							
Crew Leave Location	03/03/2011 09:00							THANK YOU FOR CHOOSING HALLIBURTON, JEFF CALDWELL AND CREW.

NOBLE

RF 20-11A Surface



Customer: Noble	Job Date: 03-Mar-2011	Sales Order #: 7983629
Well Description: RF 20-11A	Job Type: Surface	ADC Used: Yes
Company Rep: Kenny Wilkerson	Cement Supervisor: Jeff Caldwell	Elite #: 5/Jeremy Young