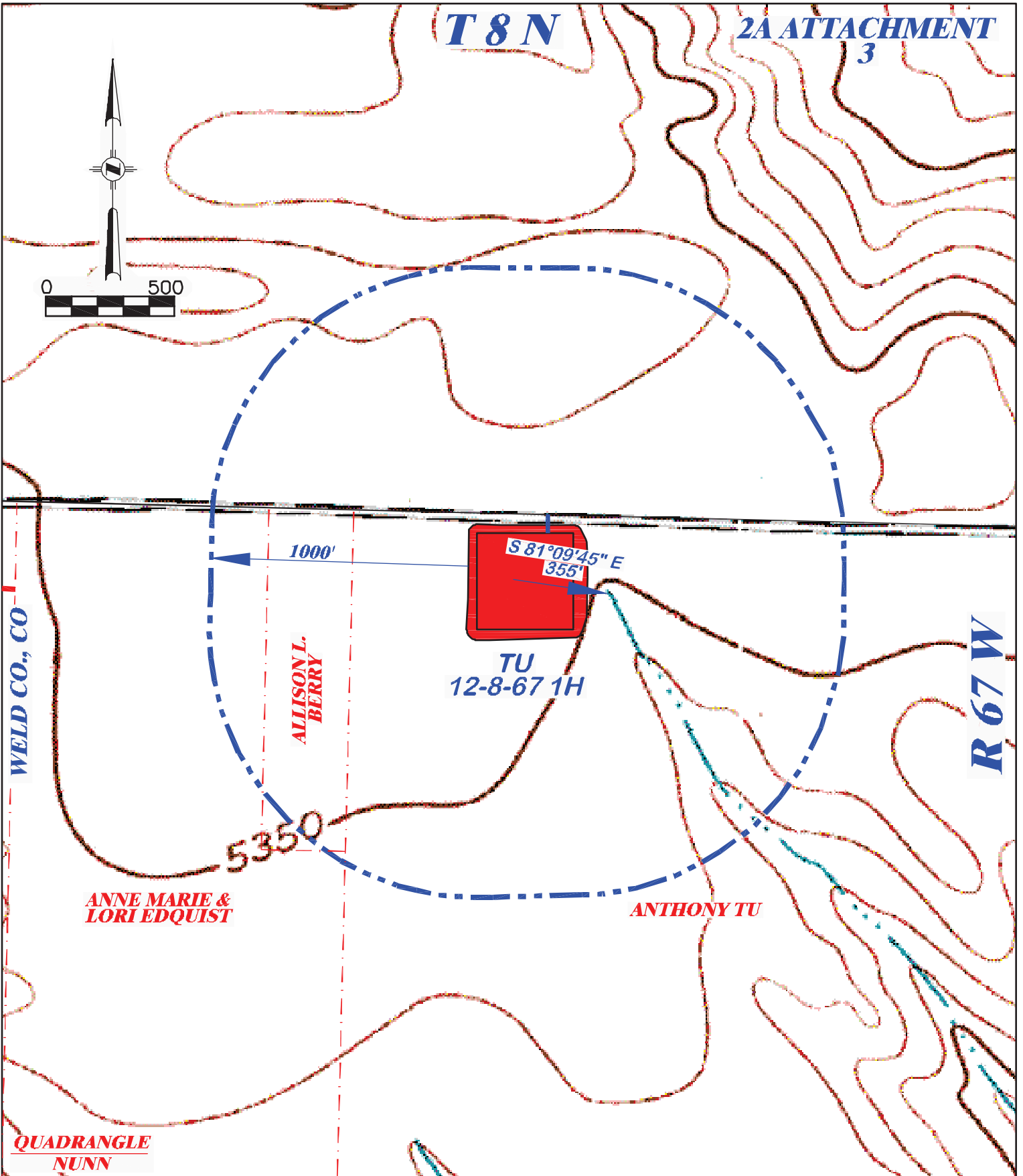
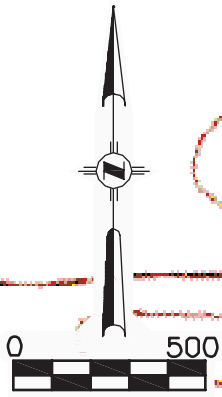


T 8 N

2A ATTACHMENT  
3



(307) 362-6028

RIFFIN & ASSOCIATES, INC.  
1414 ELK ST., ROCK SPRINGS, WY 82901

DRAWN: 4/26/11 - MMM

SCALE: 1" = 500'

REVISED: NA

DRG JOB No. 18536

EXHIBIT 4A

### HYDROLOGY MAP

CHESAPEAKE ENERGY, LLC.

TU 12-8-67 1H

SECTION 12, T8N, R67W

PROPOSED ACCESS - - - - -

EXISTING ROAD - - - - -