

Bonanza Creek Energy, Inc.

Weld County, CO

Sec. 33-T5N-R63W

North Platte 44-11-28HZ

Plan B

Plan: Plan B - Rev 0 Proposal

Sperry Drilling Services

Proposal Report

29 April, 2011

Well Coordinates: 1,375,884.90 N, 3,297,393.16 E (40° 21' 37.05" N, 104° 25' 58.08" W)

Ground Level: 4,534.00 ft

Local Coordinate Origin: Centered on Well North Platte 44-11-28HZ

Viewing Datum: New GL (4/28/11) @ 4534.00ft (Ground Level)

TVDs to System: N

North Reference: True

Unit System: API - US Survey Feet - Custom

Geodetic Scale Factor Applied

Version: 2003.16 Build: 43I

HALLIBURTON

Plan Report for North Platte 44-11-28HZ - Plan B - Rev 0 Proposal

Measured Depth (ft)	Inclination (°)	Azimuth (°)	Vertical Depth (ft)	+N/-S (ft)	+E/-W (ft)	Vertical Section (ft)	Dogleg Rate (°/100ft)	Build Rate (°/100ft)	Turn Rate (°/100ft)	Toolface Azimuth (°)
0.00	0.00	0.00	0.00	0.00	0.00	0.00	0.00	0.00	0.00	0.00
100.00	0.00	0.00	100.00	0.00	0.00	0.00	0.00	0.00	0.00	0.00
200.00	0.00	0.00	200.00	0.00	0.00	0.00	0.00	0.00	0.00	0.00
300.00	0.00	0.00	300.00	0.00	0.00	0.00	0.00	0.00	0.00	0.00
400.00	0.00	0.00	400.00	0.00	0.00	0.00	0.00	0.00	0.00	0.00
500.00	0.00	0.00	500.00	0.00	0.00	0.00	0.00	0.00	0.00	0.00
600.00	0.00	0.00	600.00	0.00	0.00	0.00	0.00	0.00	0.00	0.00
700.00	0.00	0.00	700.00	0.00	0.00	0.00	0.00	0.00	0.00	0.00
800.00	0.00	0.00	800.00	0.00	0.00	0.00	0.00	0.00	0.00	0.00
900.00	0.00	0.00	900.00	0.00	0.00	0.00	0.00	0.00	0.00	0.00
1,000.00	0.00	0.00	1,000.00	0.00	0.00	0.00	0.00	0.00	0.00	0.00
1,100.00	0.00	0.00	1,100.00	0.00	0.00	0.00	0.00	0.00	0.00	0.00
1,200.00	0.00	0.00	1,200.00	0.00	0.00	0.00	0.00	0.00	0.00	0.00
1,300.00	0.00	0.00	1,300.00	0.00	0.00	0.00	0.00	0.00	0.00	0.00
1,400.00	0.00	0.00	1,400.00	0.00	0.00	0.00	0.00	0.00	0.00	0.00
1,500.00	0.00	0.00	1,500.00	0.00	0.00	0.00	0.00	0.00	0.00	0.00
1,600.00	0.00	0.00	1,600.00	0.00	0.00	0.00	0.00	0.00	0.00	0.00
1,700.00	0.00	0.00	1,700.00	0.00	0.00	0.00	0.00	0.00	0.00	0.00
1,800.00	0.00	0.00	1,800.00	0.00	0.00	0.00	0.00	0.00	0.00	0.00
1,900.00	0.00	0.00	1,900.00	0.00	0.00	0.00	0.00	0.00	0.00	0.00
2,000.00	0.00	0.00	2,000.00	0.00	0.00	0.00	0.00	0.00	0.00	0.00
Begin 2.0°/100ft Nudge to 16.82° Inclination at 2000.00ft										
2,100.00	2.00	19.52	2,099.98	1.64	0.58	0.96	2.00	2.00	0.00	19.52
2,200.00	4.00	19.52	2,199.84	6.58	2.33	3.84	2.00	2.00	0.00	0.00
2,300.00	6.00	19.52	2,299.45	14.79	5.24	8.63	2.00	2.00	0.00	0.00
2,400.00	8.00	19.52	2,398.70	26.28	9.32	15.34	2.00	2.00	0.00	0.00
2,500.00	10.00	19.52	2,497.47	41.02	14.54	23.94	2.00	2.00	0.00	0.00
2,600.00	12.00	19.52	2,595.62	59.00	20.92	34.44	2.00	2.00	0.00	0.00
2,700.00	14.00	19.52	2,693.06	80.21	28.43	46.81	2.00	2.00	0.00	0.00
2,800.00	16.00	19.52	2,789.64	104.60	37.08	61.05	2.00	2.00	0.00	0.00
2,841.00	16.82	19.52	2,828.97	115.52	40.95	67.42	2.00	2.00	0.00	0.00
Begin 2979.79ft Tangent at 2841.00ft										
2,900.00	16.82	19.52	2,885.45	131.61	46.66	76.81	0.00	0.00	0.00	0.00
3,000.00	16.82	19.52	2,981.17	158.88	56.32	92.73	0.00	0.00	0.00	0.00
3,100.00	16.82	19.52	3,076.89	186.15	65.99	108.65	0.00	0.00	0.00	0.00
3,200.00	16.82	19.52	3,172.61	213.43	75.66	124.57	0.00	0.00	0.00	0.00
3,300.00	16.82	19.52	3,268.34	240.70	85.33	140.49	0.00	0.00	0.00	0.00
3,400.00	16.82	19.52	3,364.06	267.97	95.00	156.41	0.00	0.00	0.00	0.00
3,500.00	16.82	19.52	3,459.78	295.25	104.67	172.33	0.00	0.00	0.00	0.00
3,600.00	16.82	19.52	3,555.50	322.52	114.34	188.25	0.00	0.00	0.00	0.00
3,700.00	16.82	19.52	3,651.22	349.79	124.01	204.16	0.00	0.00	0.00	0.00
3,800.00	16.82	19.52	3,746.94	377.07	133.67	220.08	0.00	0.00	0.00	0.00
3,900.00	16.82	19.52	3,842.67	404.34	143.34	236.00	0.00	0.00	0.00	0.00
4,000.00	16.82	19.52	3,938.39	431.62	153.01	251.92	0.00	0.00	0.00	0.00
4,100.00	16.82	19.52	4,034.11	458.89	162.68	267.84	0.00	0.00	0.00	0.00
4,200.00	16.82	19.52	4,129.83	486.16	172.35	283.76	0.00	0.00	0.00	0.00
4,300.00	16.82	19.52	4,225.55	513.44	182.02	299.68	0.00	0.00	0.00	0.00
4,400.00	16.82	19.52	4,321.28	540.71	191.69	315.60	0.00	0.00	0.00	0.00
4,500.00	16.82	19.52	4,417.00	567.98	201.36	331.51	0.00	0.00	0.00	0.00
4,600.00	16.82	19.52	4,512.72	595.26	211.03	347.43	0.00	0.00	0.00	0.00
4,700.00	16.82	19.52	4,608.44	622.53	220.69	363.35	0.00	0.00	0.00	0.00
4,800.00	16.82	19.52	4,704.16	649.80	230.36	379.27	0.00	0.00	0.00	0.00
4,900.00	16.82	19.52	4,799.89	677.08	240.03	395.19	0.00	0.00	0.00	0.00
5,000.00	16.82	19.52	4,895.61	704.35	249.70	411.11	0.00	0.00	0.00	0.00
5,100.00	16.82	19.52	4,991.33	731.62	259.37	427.03	0.00	0.00	0.00	0.00
5,200.00	16.82	19.52	5,087.05	758.90	269.04	442.94	0.00	0.00	0.00	0.00
5,300.00	16.82	19.52	5,182.77	786.17	278.71	458.86	0.00	0.00	0.00	0.00
5,400.00	16.82	19.52	5,278.49	813.44	288.38	474.78	0.00	0.00	0.00	0.00

Plan Report for North Platte 44-11-28HZ - Plan B - Rev 0 Proposal

Measured Depth (ft)	Inclination (°)	Azimuth (°)	Vertical Depth (ft)	+N/-S (ft)	+E/-W (ft)	Vertical Section (ft)	Dogleg Rate (°/100ft)	Build Rate (°/100ft)	Turn Rate (°/100ft)	Toolface Azimuth (°)
5,500.00	16.82	19.52	5,374.22	840.72	298.04	490.70	0.00	0.00	0.00	0.00
5,600.00	16.82	19.52	5,469.94	867.99	307.71	506.62	0.00	0.00	0.00	0.00
5,700.00	16.82	19.52	5,565.66	895.26	317.38	522.54	0.00	0.00	0.00	0.00
5,800.00	16.82	19.52	5,661.38	922.54	327.05	538.46	0.00	0.00	0.00	0.00
5,820.79	16.82	19.52	5,681.28	928.21	329.06	541.77	0.00	0.00	0.00	0.00
KOP - Begin 8.0°/100ft Build and Turn at 5820.79ft										
5,900.00	20.24	2.61	5,756.43	952.72	333.52	558.63	8.00	4.32	-21.35	-65.76
6,000.00	26.11	348.65	5,848.39	991.63	329.97	591.80	8.00	5.87	-13.96	-49.70
6,100.00	32.83	339.80	5,935.44	1,038.72	316.25	637.63	8.00	6.73	-8.85	-36.84
6,200.00	39.99	333.75	6,015.89	1,093.07	292.64	695.23	8.00	7.16	-6.05	-29.12
6,300.00	47.38	329.29	6,088.17	1,153.63	259.58	763.46	8.00	7.39	-4.45	-24.24
6,400.00	54.91	325.80	6,150.88	1,219.20	217.73	841.01	8.00	7.52	-3.50	-21.01
6,500.00	62.51	322.90	6,202.78	1,288.53	167.89	926.36	8.00	7.61	-2.90	-18.81
6,600.00	70.17	320.38	6,242.89	1,360.25	111.04	1,017.86	8.00	7.66	-2.52	-17.30
6,700.00	77.87	318.09	6,270.40	1,432.97	48.29	1,113.72	8.00	7.69	-2.29	-16.29
6,800.00	85.58	315.93	6,284.79	1,505.28	-19.15	1,212.07	8.00	7.71	-2.16	-15.66
6,858.54	90.09	314.69	6,287.00	1,546.86	-60.28	1,270.04	8.00	7.72	-2.11	-15.35
End of Build and Turn at 6858.54ft - 7" Csg										
6,900.00	90.09	314.69	6,286.94	1,576.02	-89.75	1,311.07	0.00	0.00	0.00	0.00
7,000.00	90.09	314.69	6,286.77	1,646.34	-160.85	1,410.05	0.00	0.00	0.00	0.00
7,100.00	90.09	314.69	6,286.61	1,716.67	-231.94	1,509.03	0.00	0.00	0.00	0.00
7,200.00	90.09	314.69	6,286.45	1,787.00	-303.03	1,608.00	0.00	0.00	0.00	0.00
7,300.00	90.09	314.69	6,286.29	1,857.32	-374.12	1,706.98	0.00	0.00	0.00	0.00
7,400.00	90.09	314.69	6,286.13	1,927.65	-445.21	1,805.96	0.00	0.00	0.00	0.00
7,500.00	90.09	314.69	6,285.97	1,997.98	-516.31	1,904.93	0.00	0.00	0.00	0.00
7,600.00	90.09	314.69	6,285.81	2,068.30	-587.40	2,003.91	0.00	0.00	0.00	0.00
7,700.00	90.09	314.69	6,285.64	2,138.63	-658.49	2,102.88	0.00	0.00	0.00	0.00
7,800.00	90.09	314.69	6,285.48	2,208.96	-729.58	2,201.86	0.00	0.00	0.00	0.00
7,900.00	90.09	314.69	6,285.32	2,279.29	-800.67	2,300.84	0.00	0.00	0.00	0.00
8,000.00	90.09	314.69	6,285.16	2,349.61	-871.77	2,399.81	0.00	0.00	0.00	0.00
8,100.00	90.09	314.69	6,285.00	2,419.94	-942.86	2,498.79	0.00	0.00	0.00	0.00
8,200.00	90.09	314.69	6,284.84	2,490.27	-1,013.95	2,597.76	0.00	0.00	0.00	0.00
8,300.00	90.09	314.69	6,284.68	2,560.59	-1,085.04	2,696.74	0.00	0.00	0.00	0.00
8,400.00	90.09	314.69	6,284.51	2,630.92	-1,156.14	2,795.72	0.00	0.00	0.00	0.00
8,500.00	90.09	314.69	6,284.35	2,701.25	-1,227.23	2,894.69	0.00	0.00	0.00	0.00
8,600.00	90.09	314.69	6,284.19	2,771.57	-1,298.32	2,993.67	0.00	0.00	0.00	0.00
8,700.00	90.09	314.69	6,284.03	2,841.90	-1,369.41	3,092.65	0.00	0.00	0.00	0.00
8,800.00	90.09	314.69	6,283.87	2,912.23	-1,440.50	3,191.62	0.00	0.00	0.00	0.00
8,900.00	90.09	314.69	6,283.71	2,982.56	-1,511.60	3,290.60	0.00	0.00	0.00	0.00
9,000.00	90.09	314.69	6,283.54	3,052.88	-1,582.69	3,389.57	0.00	0.00	0.00	0.00
9,100.00	90.09	314.69	6,283.38	3,123.21	-1,653.78	3,488.55	0.00	0.00	0.00	0.00
9,200.00	90.09	314.69	6,283.22	3,193.54	-1,724.87	3,587.53	0.00	0.00	0.00	0.00
9,300.00	90.09	314.69	6,283.06	3,263.86	-1,795.96	3,686.50	0.00	0.00	0.00	0.00
9,400.00	90.09	314.69	6,282.90	3,334.19	-1,867.06	3,785.48	0.00	0.00	0.00	0.00
9,500.00	90.09	314.69	6,282.74	3,404.52	-1,938.15	3,884.45	0.00	0.00	0.00	0.00
9,600.00	90.09	314.69	6,282.58	3,474.84	-2,009.24	3,983.43	0.00	0.00	0.00	0.00
9,700.00	90.09	314.69	6,282.41	3,545.17	-2,080.33	4,082.41	0.00	0.00	0.00	0.00
9,800.00	90.09	314.69	6,282.25	3,615.50	-2,151.43	4,181.38	0.00	0.00	0.00	0.00
9,900.00	90.09	314.69	6,282.09	3,685.82	-2,222.52	4,280.36	0.00	0.00	0.00	0.00
Hold Angle at 90.09°										
10,000.00	90.09	314.69	6,281.93	3,756.15	-2,293.61	4,379.33	0.00	0.00	0.00	0.00
10,100.00	90.09	314.69	6,281.77	3,826.48	-2,364.70	4,478.31	0.00	0.00	0.00	0.00
10,200.00	90.09	314.69	6,281.61	3,896.81	-2,435.79	4,577.29	0.00	0.00	0.00	0.00
10,300.00	90.09	314.69	6,281.45	3,967.13	-2,506.89	4,676.26	0.00	0.00	0.00	0.00
10,400.00	90.09	314.69	6,281.28	4,037.46	-2,577.98	4,775.24	0.00	0.00	0.00	0.00
10,500.00	90.09	314.69	6,281.12	4,107.79	-2,649.07	4,874.22	0.00	0.00	0.00	0.00
10,600.00	90.09	314.69	6,280.96	4,178.11	-2,720.16	4,973.19	0.00	0.00	0.00	0.00
10,700.00	90.09	314.69	6,280.80	4,248.44	-2,791.25	5,072.17	0.00	0.00	0.00	0.00
10,800.00	90.09	314.69	6,280.64	4,318.77	-2,862.35	5,171.14	0.00	0.00	0.00	0.00

Plan Report for North Platte 44-11-28HZ - Plan B - Rev 0 Proposal

Measured Depth (ft)	Inclination (°)	Azimuth (°)	Vertical Depth (ft)	+N/-S (ft)	+E/-W (ft)	Vertical Section (ft)	Dogleg Rate (°/100ft)	Build Rate (°/100ft)	Turn Rate (°/100ft)	Toolface Azimuth (°)
10,900.00	90.09	314.69	6,280.48	4,389.09	-2,933.44	5,270.12	0.00	0.00	0.00	0.00
11,000.00	90.09	314.69	6,280.32	4,459.42	-3,004.53	5,369.10	0.00	0.00	0.00	0.00
11,100.00	90.09	314.69	6,280.15	4,529.75	-3,075.62	5,468.07	0.00	0.00	0.00	0.00
11,200.00	90.09	314.69	6,279.99	4,600.08	-3,146.71	5,567.05	0.00	0.00	0.00	0.00
11,300.00	90.09	314.69	6,279.83	4,670.40	-3,217.81	5,666.02	0.00	0.00	0.00	0.00
11,400.00	90.09	314.69	6,279.67	4,740.73	-3,288.90	5,765.00	0.00	0.00	0.00	0.00
11,500.00	90.09	314.69	6,279.51	4,811.06	-3,359.99	5,863.98	0.00	0.00	0.00	0.00
11,600.00	90.09	314.69	6,279.35	4,881.38	-3,431.08	5,962.95	0.00	0.00	0.00	0.00
11,700.00	90.09	314.69	6,279.19	4,951.71	-3,502.18	6,061.93	0.00	0.00	0.00	0.00
11,800.00	90.09	314.69	6,279.02	5,022.04	-3,573.27	6,160.91	0.00	0.00	0.00	0.00
11,900.00	90.09	314.69	6,278.86	5,092.36	-3,644.36	6,259.88	0.00	0.00	0.00	0.00
12,000.00	90.09	314.69	6,278.70	5,162.69	-3,715.45	6,358.86	0.00	0.00	0.00	0.00
12,100.00	90.09	314.69	6,278.54	5,233.02	-3,786.54	6,457.83	0.00	0.00	0.00	0.00
12,200.00	90.09	314.69	6,278.38	5,303.35	-3,857.64	6,556.81	0.00	0.00	0.00	0.00
12,300.00	90.09	314.69	6,278.22	5,373.67	-3,928.73	6,655.79	0.00	0.00	0.00	0.00
12,400.00	90.09	314.69	6,278.06	5,444.00	-3,999.82	6,754.76	0.00	0.00	0.00	0.00
12,500.00	90.09	314.69	6,277.89	5,514.33	-4,070.91	6,853.74	0.00	0.00	0.00	0.00
12,600.00	90.09	314.69	6,277.73	5,584.65	-4,142.00	6,952.71	0.00	0.00	0.00	0.00
12,700.00	90.09	314.69	6,277.57	5,654.98	-4,213.10	7,051.69	0.00	0.00	0.00	0.00
12,800.00	90.09	314.69	6,277.41	5,725.31	-4,284.19	7,150.67	0.00	0.00	0.00	0.00
12,900.00	90.09	314.69	6,277.25	5,795.63	-4,355.28	7,249.64	0.00	0.00	0.00	0.00
13,000.00	90.09	314.69	6,277.09	5,865.96	-4,426.37	7,348.62	0.00	0.00	0.00	0.00
13,047.87	90.09	314.69	6,277.01	5,899.63	-4,460.40	7,396.00	0.00	0.00	0.00	0.00

Plan Annotations

Measured Depth (ft)	Vertical Depth (ft)	Local Coordinates		Comment
		+N/-S (ft)	+E/-W (ft)	
2,000.00	2,000.00	0.00	0.00	Begin 2.0°/100ft Nudge to 16.82° Inclination at 2000.00ft
2,841.00	2,828.97	115.52	40.95	Begin 2979.79ft Tangent at 2841.00ft
5,820.79	5,681.28	928.21	329.06	KOP - Begin 8.0°/100ft Build and Turn at 5820.79ft
6,858.54	6,287.00	1,546.86	-60.28	End of Build and Turn at 6858.54ft
9,900.00	6,282.09	3,685.82	-2,222.52	Hold Angle at 90.09°
13,047.87	6,277.01	5,899.63	-4,460.40	Total Depth at 13047.87ft

Vertical Section Information

Angle Type	Target	Azimuth (°)	Origin Type	Origin		Start TVD (ft)
				+N/-S (ft)	+E/-W (ft)	
Target	North Platte 44-11-28HZ_PlanB - Rev0_BHL Tgt	322.90	Slot	0.00	0.00	0.00

Survey tool program

From (ft)	To (ft)	Survey/Plan	Survey Tool
0.00	13,047.87	Plan B - Rev 0 Proposal	MWD

Casing Details

Measured Depth (ft)	Vertical Depth (ft)	Name	Casing Diameter (")	Hole Diameter (")
6,858.54	6,287.00	7" Csg	7	8-3/4

Plan Report for North Platte 44-11-28HZ - Plan B - Rev 0 Proposal

Targets associated with this wellbore

Target Name	TVD (ft)	+N/-S (ft)	+E/-W (ft)	Shape
North Platte 44-11-28HZ_Sec. 33 Lines	0.00	0.00	0.00	Polygon
North Platte 44-11-28_PlanB - Rev0_Csg Pt Tgt	6,287.00	1,546.86	-60.19	Point
North Platte 44-11-28HZ_PlanB - Rev0_BHL Tgt	6,277.00	5,898.57	-4,461.80	Point
North Platte 44-11-28HZ_Sec. 28 Lines	0.00	0.00	0.00	Polygon

North Reference Sheet for Sec. 33-T5N-R63W - North Platte 44-11-28HZ - Plan B

All data is in US Feet unless otherwise stated. Directions and Coordinates are relative to True North Reference.

Vertical Depths are relative to New GL (4/28/11) @ 4534.00ft (Ground Level). Northing and Easting are relative to North Platte 44-11-28HZ

Coordinate System is US State Plane 1983, Colorado Northern Zone using datum North American Datum 1983, ellipsoid GRS 1980

Projection method is Lambert Conformal Conic (2 parallel)

Central Meridian is -105.50°, Longitude Origin:0° 0' 0.000 E°, Latitude Origin:40° 47' 0.000 N°

False Easting: 3,000,000.00ft, False Northing: 1,000,000.00ft, Scale Reduction: 0.99995867

Grid Coordinates of Well: 1,375,884.90 ft N, 3,297,393.16 ft E

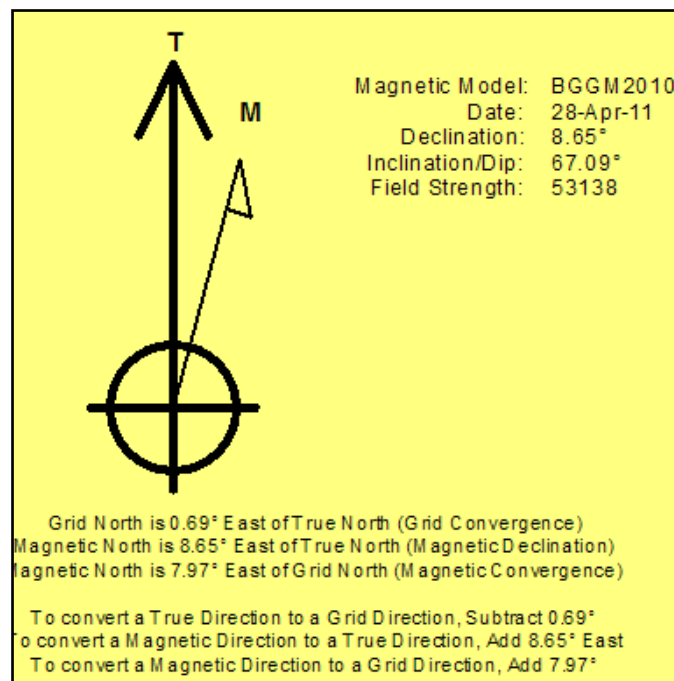
Geographical Coordinates of Well: 40° 21' 37.05" N, 104° 25' 58.08" W

Grid Convergence at Surface is: 0.69°

Based upon Minimum Curvature type calculations, at a Measured Depth of 13,047.87ft

the Bottom Hole Displacement is 7,396.00ft in the Direction of 322.91° (True).

Magnetic Convergence at surface is: -7.97° (28 April 2011, , BGGM2010)



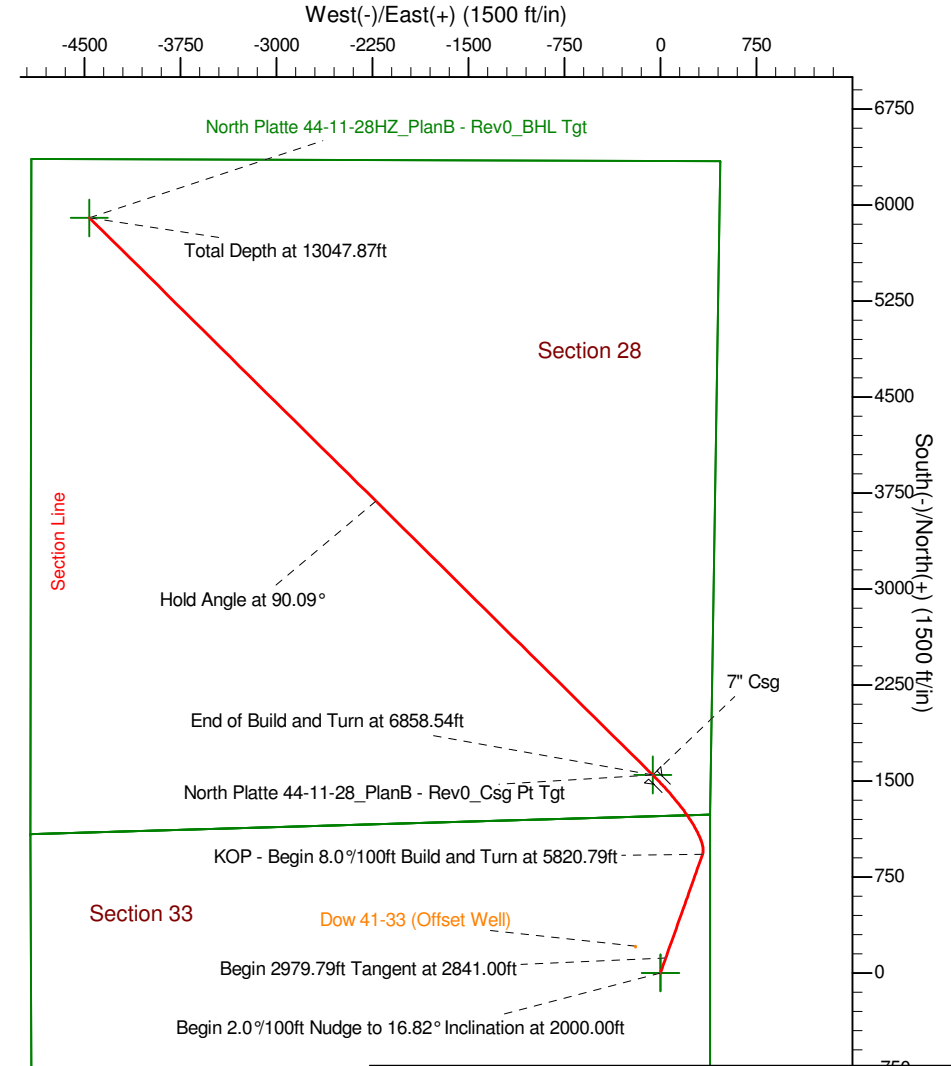
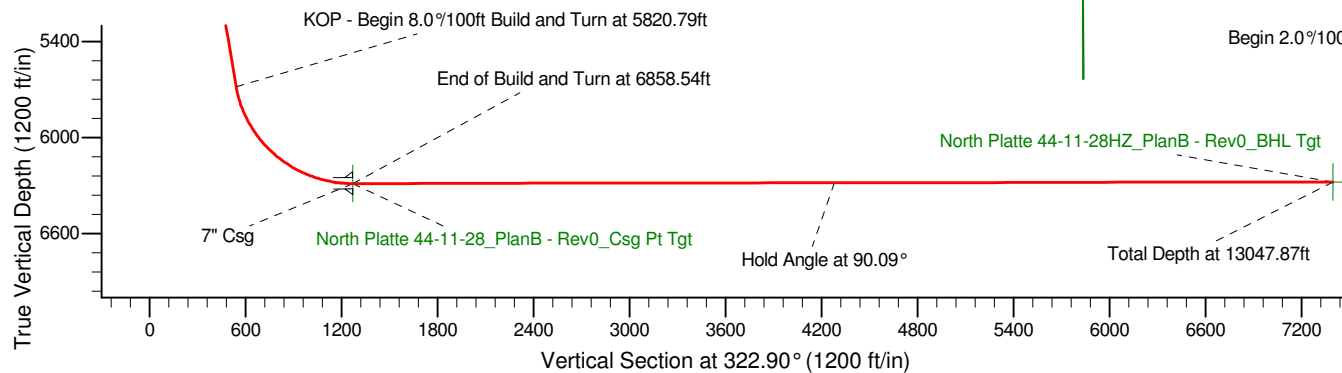
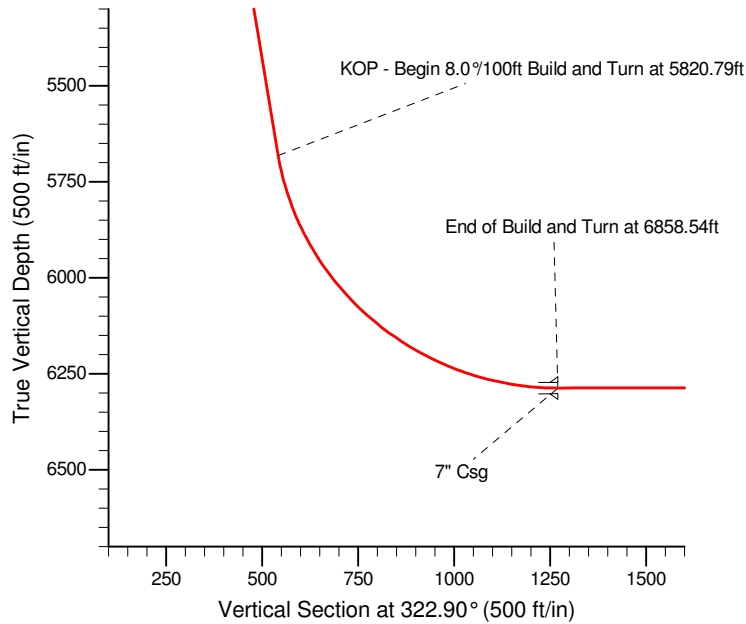
Project: Weld County, CO
Site: Sec. 33-T5N-R63W
Well: North Platte 44-11-28HZ
Wellbore: Plan B
Design: Plan B - Rev 0 Proposal

Bonanza Creek Energy, Inc.

HALLIBURTON
Sperry Drilling

SECTION DETAILS

Sec	MD	Inc	Azi	TVD	+N/-S	+E/-W	DLeg	TFace	VSec	Target
1	0.00	0.00	0.00	0.00	0.00	0.00	0.00	0.00	0.00	
2	2000.00	0.00	0.00	2000.00	0.00	0.00	0.00	0.00	0.00	
3	2841.00	16.82	19.52	2828.97	115.52	40.95	2.00	19.52	67.42	
4	5820.79	16.82	19.52	5681.28	928.21	329.06	0.00	0.00	541.77	
5	6858.54	90.09	314.69	6287.00	1546.86	-60.28	8.00	-65.76	1270.04	
6	13047.87	90.09	314.69	6277.01	5899.63	-4460.40	0.00	0.00	7396.00	North Platte 44-11-28HZ_PlanB - Rev0_BHL Tgt



WELL DETAILS: North Platte 44-11-28HZ

Ground Level:	4534.00		
Northing	Easting	Latitude	Longitude
1375884.90	3297393.16	40° 21' 37.055 N	104° 25' 58.080 W

Plan: Plan B - Rev 0 Proposal (North Platte 44-11-28HZ/Plan B)

Created By: Jay Lantz Date: 12:15, April 29 2011

Checked: _____ Date: _____

Reviewed: _____ Date: _____

Approved: _____ Date: _____