

---

# **NOBLE ENERGY INC E-BUSINESS**

---

**Double B Ranch 18-44C  
RULISON  
Garfield County , Colorado**

**Cement Surface Casing**  
**08-Mar-2011**

**Post Job Summary**

## The Road to Excellence Starts with Safety

Sold To #: 345242	Ship To #: 2814375	Quote #:	Sales Order #: 8017597
Customer: NOBLE ENERGY INC E-BUSINESS		Customer Rep: Wilkerson, Kenny	
Well Name: Double B Ranch	Well #: 18-44C	API/UWI #:	
Field: RULISON	City (SAP): RIFLE	County/Parish: Garfield	State: Colorado
Lat: N 39.433 deg. OR N 39 deg. 26 min. 0.089 secs.		Long: W 107.918 deg. OR W -108 deg. 4 min. 55.956 secs.	
Contractor: H&P Drilling	Rig/Platform Name/Num: H&P 322		
Job Purpose: Cement Surface Casing			
Well Type: Development Well	Job Type: Cement Surface Casing		
Sales Person: METLI, MARSHALL	Srvc Supervisor: HUGENTOBLER, LOGAN	MBU ID Emp #: 447333	

### Job Personnel

HES Emp Name	Exp Hrs	Emp #	HES Emp Name	Exp Hrs	Emp #	HES Emp Name	Exp Hrs	Emp #
BORSZICH, STEPHEN A	8	412388	HUGENTOBLE, LOGAN Mark	8	447333	KEANE, JOHN Donovan	8	486519
MAGERS, MICHAEL Gerard	8	339439	WALPOLE, DARREN Livingston	8	485294	YUTZY, BRIAN Matthew	8	478510

### Equipment

HES Unit #	Distance-1 way	HES Unit #	Distance-1 way	HES Unit #	Distance-1 way	HES Unit #	Distance-1 way
10296152C	60 mile	10829463	60 mile	10867423	60 mile	10897797	60 mile
10897887	60 mile						

### Job Hours

Date	On Location Hours	Operating Hours	Date	On Location Hours	Operating Hours	Date	On Location Hours	Operating Hours
3/8/11	8	1						

**TOTAL** Total is the sum of each column separately

### Job

Formation Name	Top	Bottom	Called Out	Date	Time	Time Zone
Formation Depth (MD)			On Location	07 - Mar - 2011	00:00	MST
Form Type	BHST		Job Started	08 - Mar - 2011	02:00	MST
Job depth MD	1537. ft	Job Depth TVD	Job Started	08 - Mar - 2011	06:02	MST
Water Depth		Wk Ht Above Floor	Job Completed	08 - Mar - 2011	07:05	MST
Perforation Depth (MD)	From	To	Departed Loc	08 - Mar - 2011	09:10	MST

### Well Data

Description	New / Used	Max pressure psig	Size in	ID in	Weight lbm/ft	Thread	Grade	Top MD ft	Bottom MD ft	Top TVD ft	Bottom TVD ft
-------------	------------	-------------------	---------	-------	---------------	--------	-------	-----------	--------------	------------	---------------

### Sales/Rental/3<sup>rd</sup> Party (HES)

Description	Qty	Qty uom	Depth	Supplier
R/A DENSOMETER W/CHART RECORDER,/JOB,ZI	1	JOB		
PORT. DAS W/CEMWIN;ACQUIRE W/HES, ZI	1	JOB		
ADC (AUTO DENSITY CTRL) SYS, /JOB,ZI	1	JOB		
PLUG,CMTG,TOP,8 5/8,HWE,7.20 MIN/8.09 MA	1	EA		

### Tools and Accessories

Type	Size	Qty	Make	Depth	Type	Size	Qty	Make	Depth	Type	Size	Qty	Make
Guide Shoe					Packer					Top Plug	8.625	1	HES
Float Shoe					Bridge Plug					Bottom Plug			
Float Collar					Retainer					SSR plug set			
Insert Float										Plug Container			
Stage Tool										Centralizers			

### Miscellaneous Materials

Gelling Agt	Conc	Surfactant	Conc	Acid Type	Qty	Conc	%
Treatment Fld	Conc	Inhibitor	Conc	Sand Type	Size	Qty	

### Fluid Data

Stage/Plug #: 1										
Fluid #	Stage Type	Fluid Name	Qty	Qty uom	Mixing Density lbm/gal	Yield ft <sup>3</sup> /sk	Mix Fluid Gal/sk	Rate bbl/min	Total Mix Fluid Gal/sk	
1	Fresh Water Spacer		20.00	bbl	.	.0	.0	.0		
2	VersaCem Lead Cement	VERSACEM (TM) SYSTEM (452010)	212.0	sacks	12.3	2.38	13.75		13.75	
3	VersaCem Tail Cement	VERSACEM (TM) SYSTEM (452010)	118.0	sacks	12.8	2.11	11.76		11.76	
11.76 Gal		FRESH WATER								
4	Displacement		89.00	bbl	.	.0	.0	.0		
Calculated Values		Pressures		Volumes						
Displacement	89	Shut In: Instant		Lost Returns	0	Cement Slurry	134	Pad		
Top Of Cement	SURFACE	5 Min		Cement Returns	10	Actual Displacement	70	Treatment		
Frac Gradient		15 Min		Spacers	20	Load and Breakdown		Total Job		
Rates										
Circulating	5	Mixing	6	Displacement	7	Avg. Job	6			
Cement Left In Pipe	Amount	42.8 ft	Reason	Shoe Joint						
Frac Ring # 1 @	ID	Frac ring # 2 @	ID	Frac Ring # 3 @	ID	Frac Ring # 4 @	ID			
The Information Stated Herein Is Correct				Customer Representative Signature						

*The Road to Excellence Starts with Safety*

<b>Sold To #:</b> 345242	<b>Ship To #:</b> 2814375	<b>Quote #:</b>	<b>Sales Order #:</b> 8017597
<b>Customer:</b> NOBLE ENERGY INC E-BUSINESS		<b>Customer Rep:</b> Wilkerson, Kenny	
<b>Well Name:</b> Double B Ranch		<b>Well #:</b> 18-44C	<b>API/UWI #:</b>
<b>Field:</b> RULISON	<b>City (SAP):</b> RIFLE	<b>County/Parish:</b> Garfield	<b>State:</b> Colorado
<b>Legal Description:</b>			
<b>Lat:</b> N 39.433 deg. OR N 39 deg. 26 min. 0.089 secs.		<b>Long:</b> W 107.918 deg. OR W -108 deg. 4 min. 55.956 secs.	
<b>Contractor:</b> H&P Drilling		<b>Rig/Platform Name/Num:</b> H&P 322	
<b>Job Purpose:</b> Cement Surface Casing			<b>Ticket Amount:</b>
<b>Well Type:</b> Development Well		<b>Job Type:</b> Cement Surface Casing	
<b>Sales Person:</b> METLI, MARSHALL		<b>Srv Supervisor:</b> HUGENTOBLE, LOGAN	<b>MBU ID Emp #:</b> 447333

Activity Description	Date/Time	Cht #	Rate bbl/min	Volume bbl		Pressure psig		Comments
				Stage	Total	Tubing	Casing	
Call Out	03/07/2011 21:30							
Pre-Convoy Safety Meeting	03/07/2011 23:30							ALL HES EMPLOYEES
Arrive At Loc	03/08/2011 02:00							RIG STILL RUNNING CASING
Assessment Of Location Safety Meeting	03/08/2011 02:15							ALL HES EMPLOYEES
Rig-Up Equipment	03/08/2011 02:25							1 HT-400 PUMP TRUCK, 1 660 BULK TRUCK, 1 F-450 P/U,
Pre-Job Safety Meeting	03/08/2011 05:30							ALL HES EMPLOYEES, RIG CREW, CO REP AND ANY 3RD PARTY VENDORS
Start Job	03/08/2011 06:02							TP 1505 FT, TD 1537 FT, FC 1462 FT, HOLE 12.25", MUD WT 9.3 PPG, RATE WILL BE 6, WILL BUMP 500 PSI OVER LAND PSI, RIG CIRCULATED HOLE FOR 1 HRS
Pump Water	03/08/2011 06:05		2	2			65.0	FILL LINES PRIOR TO PRESSURE TESTING LINES
Pressure Test	03/08/2011 06:06							NO LEAKS, KICK OUTS SET TO 3000 PSI FOR TEST.
Pump Spacer 1	03/08/2011 06:10		6	20			125.0	FRESH WATER
Activity Description	Date/Time	Cht #	Rate bbl/min	Volume bbl		Pressure psig		Comments
				Stage	Total	Tubing	Casing	

Pump Lead Cement	03/08/2011 06:20		6	89			221.0	212 SKS VERSACEM CMT TO BE MIXED AT 12.3 PPG, 2.38 YIELD, 13.75 GAL/SK, CMT TO BE WEIGHED VIA PRESSURE BALANCED MUD SCALES WET AND DRY SAMPLES SUBMITTED.
Pump Tail Cement	03/08/2011 06:35		6	44			246.0	118 SKS VERSACEM CMT TO BE MIXED AT 12.8 PPG, 2.38 YIELD, 11.75 GAL/SK, CMT TO BE WEIGHED VIA PRESSURE BALANCED MUD SCALES, WET AND DRY SAMPLES SUBMITTED,
Shutdown	03/08/2011 06:43							
Drop Plug	03/08/2011 06:49							
Pump Displacement	03/08/2011 06:50		7	70			470.0	FRESH WATER
Slow Rate	03/08/2011 07:00		3	60			253.0	AT FIRST SITE OF CEMENT
Shutdown	03/08/2011 07:02							SHUTDOWN AFTER 10 BBLs OF CEMENT TO SURFACE PER KENNY
Check Floats	03/08/2011 07:03							FLOATS HOLDING
End Job	03/08/2011 07:05							THANK YOU FOR USING HES LOGAN HUGENTOBLE AND CREW
Post-Job Safety Meeting (Pre Rig-Down)	03/08/2011 07:15							ALL HES EMPLOYEES
Rig-Down Equipment	03/08/2011 07:20							
Pre-Convoy Safety Meeting	03/08/2011 09:00							ALL HES EMPLOYEES
Crew Leave Location	03/08/2011 09:10							LOCATION CLEAN

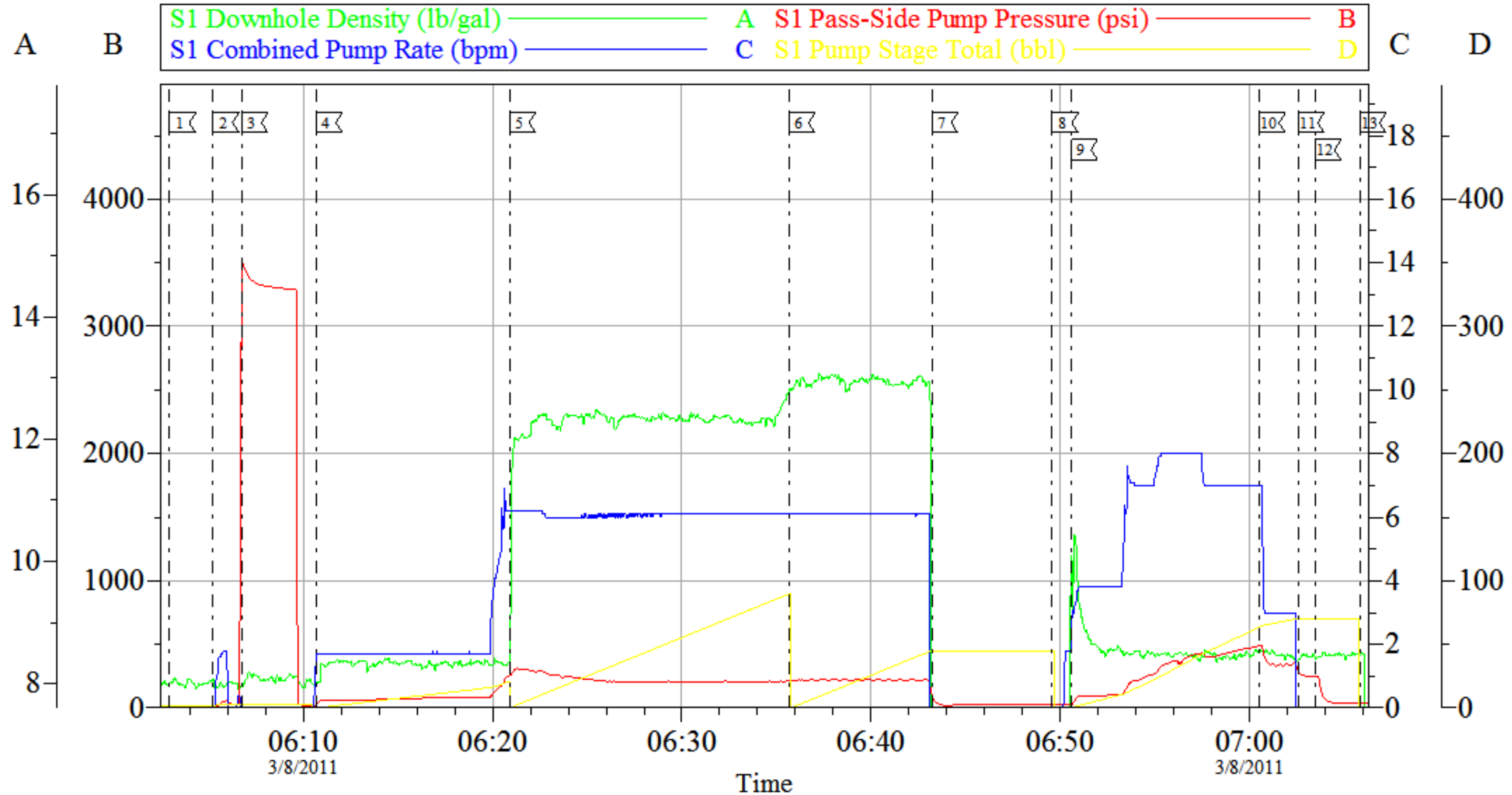
Total Depth = 1537, Total pipe = 1505, Shoe Joint = 42.8, Mud Weight = 9.3# . Pumped the job offline. Shutdown before plug bumped. Only wanted 10 bbls of cement to surface. Removed plug container and quicklatch charges from ticket. Floats held.Had 1 add hour.



**Thank you for using Grand Junction Halliburton.**

# NOBLE

## 8.625 SURFACE PIPE



Local Event Log			
1 START JOB	06:02:56	2 PRIME LINES	06:05:13
3 PRESSURE TEST	06:06:45	4 PUMP H2O SPACER	06:10:41
5 PUMP LEAD CEMENT	06:20:54	6 PUMP TAIL CEMENT	06:35:40
7 SHUTDOWN	06:43:12	8 DROP PLUG	06:49:34
9 PUMP DISPLACEMENT	06:50:36	10 SLOW RATE	07:00:31
11 SHUTDOWN	07:02:34	12 CHECK FLOATS	07:03:27
13 END JOB	07:05:50		

Customer: NOBLE  
 Well Description: DOUBLE B RANCH  
 Company Rep: KENNY WILKERSON

Job Date: 08-Mar-2011  
 Job Type: SURFACE  
 Cement Supervisor: LOGAN HUGENTOBLE

Sales Order #: 8017597  
 ADC Used: YES  
 Elite # 9/ Operator: STEVE BORSZICH

OptiCem v6.4.10  
 08-Mar-11 07:27