

Stell Surveying Services, LLC

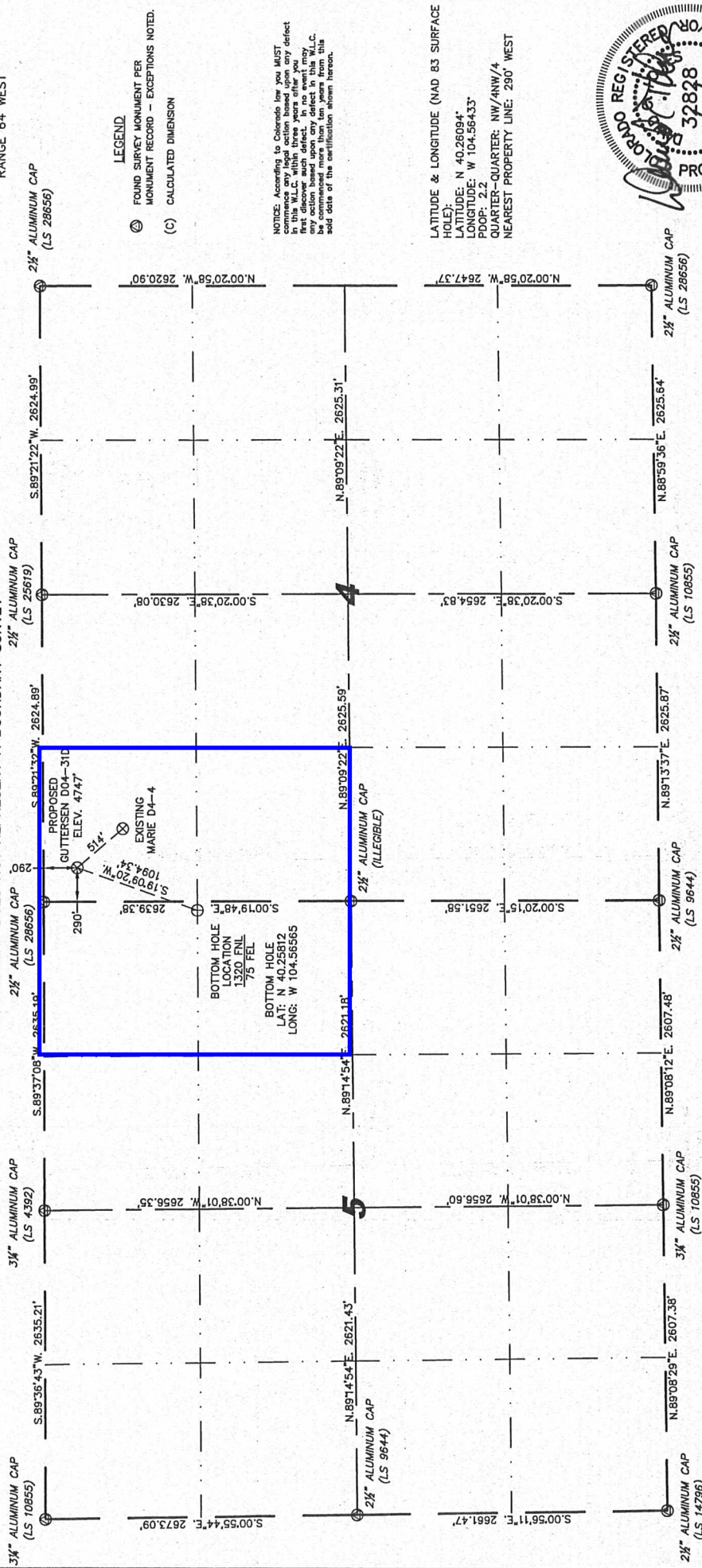
1102 West 19th Street P.O. BOX 2073

Cheyenne, Wyoming 82009

WELL LOCATION CERTIFICATE

THIS MAP DOES NOT REPRESENT A BOUNDARY SURVEY

SECTION 4
TOWNSHIP 3 NORTH
RANGE 64 WEST



IN ACCORDANCE WITH A REQUEST FROM BRIAN DARGOSE - NOBLE ENERGY INC. STELL SURVEYING SERVICES, LLC HAS DETERMINED THE LOCATION OF THE GUTTERSEN D04-31D WELL TO BE 290' FNL, 290' FW, AS MEASURED AT NINETY (90) DEGREES FROM THE SECTION CORNER AND THE NORTHEAST SECTION CORNER OF SAID SECTION AND WITH ALL BEARINGS SHOWN HEREON RELATIVE THERETO, TOWNSHIP 3 NORTH, RANGE 64 WEST, 6TH PRINCIPLE MERIDIAN, WELD COUNTY, COLORADO.

I HEREBY CERTIFY THAT THIS WELL LOCATION CERTIFICATE WAS PREPARED BY ME, OR UNDER MY DIRECT SUPERVISION, THAT THE FIELD WORK WAS COMPLETED ON 11/15/2010, FOR AND ON BEHALF OF STELL SURVEYING SERVICES, LLC, AND THAT IT IS NOT TO BE RELIED UPON FOR ESTABLISHMENT OF FENCE, BUILDING, OR OTHER FUTURE IMPROVEMENT LINES.

NOTES:
1) BASIS OF BEARINGS FOR THIS MAP ARE BASED UPON GPS OBSERVATIONS MADE ON 09/15/2009 BETWEEN MONUMENTS LOCATED AT THE SOUTHEAST SECTION CORNER AND THE NORTHEAST SECTION CORNER OF SAID SECTION AND WITH ALL BEARINGS SHOWN HEREON RELATIVE THERETO, TOWNSHIP 3 NORTH, RANGE 64 WEST, 6TH PRINCIPLE MERIDIAN, WELD COUNTY, COLORADO.
2) ELEVATIONS ARE BASED UPON NGS OPUS SOLUTION NAD 83 DATUM.
3) THE NEAREST EXISTING WELL IS: MARIE D4-4, 514' SOUTHEAST.
4) SEE LOCATION DRAWING FOR ALL IMPROVEMENTS WITHIN VISIBLE IMPROVEMENTS LIMIT.
5) THE LOCATION FALLS IN PASTURE LAND.



0 1000
Scale: 1" = 1000'



David C. Holmes
Professional Land Surveyor
State of Colorado
JOB #: 10086

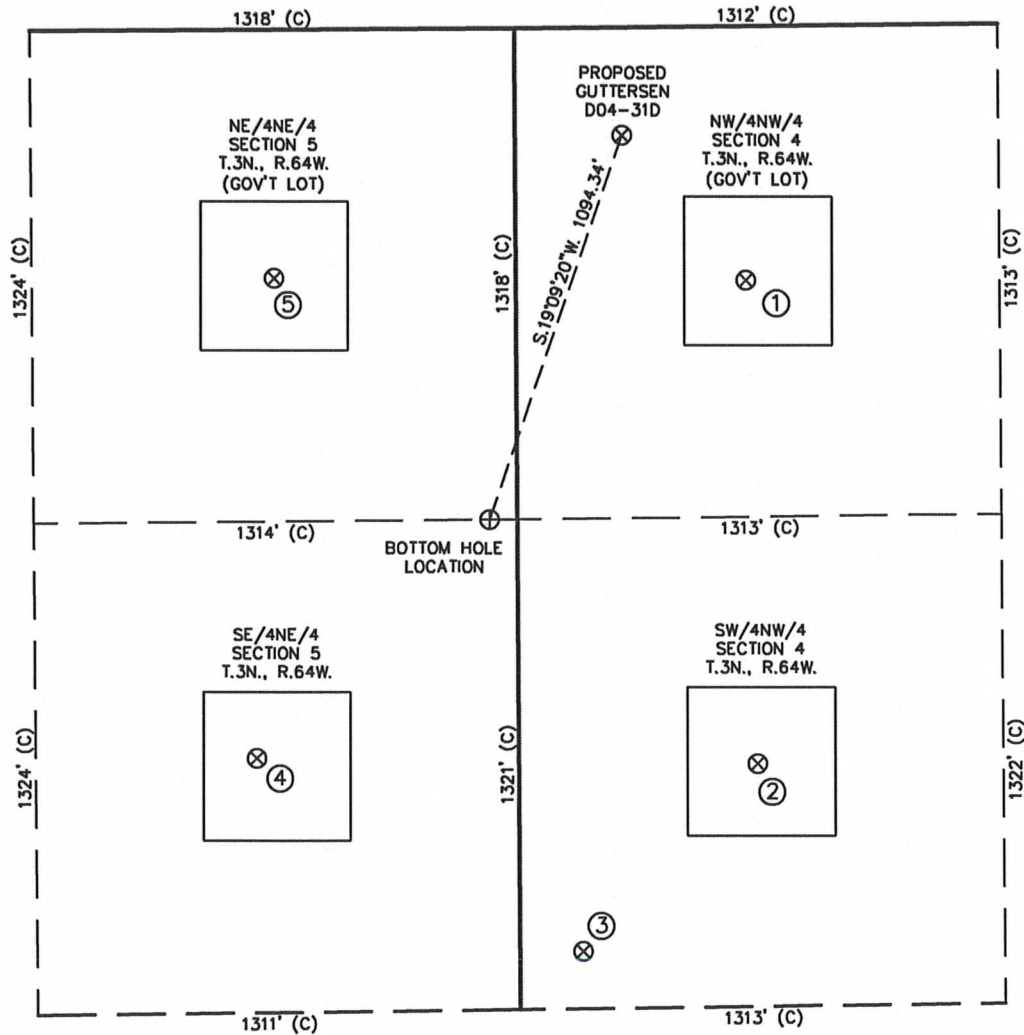
NOTICE: According to Colorado law you MUST contact the appropriate action board upon any defect in this W.L.C. If the defect is not corrected, the first discoverer such defect, in no event may any action based upon any defect in this W.L.C. be taken after the date of the certification shown hereon.

LATITUDE & LONGITUDE (NAD 83 SURFACE HOLE):
LATITUDE: N 40.26094°
LONGITUDE: W 104.56433°
POOP: 2.2
QUARTER-QUARTER: NW/4NW/4
NEAREST PROPERTY LINE: 290' WEST

LEGEND
⊙ FOUND SURVEY MONUMENT PER MONUMENT RECORD - EXCEPTIONS NOTED.
(C) CALCULATED DIMENSION

SITE SKETCH - GUTTERSEN D04-31D

SECTIONS 4
TOWNSHIP 3 NORTH
RANGE 64 WEST



①	②	③	④	⑤
MARIE D4-4 NW/NW SEC. 4 T.3N., R.64W. 683' FNL 624' FWL EL 4745' N 40.25986 W 104.56314 PDOP 2.2	MARIE D4-5 SW/NW SEC. 4 T.3N., R.64W. 1984' FNL 646' FWL EL 4733' N 40.25629 W 104.56308 PDOP 2.1	GUTTERSEN D04-32 SW/NW SEC. 4 T.3N., R.64W. 2484' FNL 171' FWL EL 4745' N 40.25492 W 104.56479 PDOP 2.2	BECKER 5-4 SE/NE SEC. 5 T.3N., R.64W. 1959' FNL 711' FEL EL 4771' N 40.25637 W 104.56794 PDOP 1.9	BECKER 5-10 NE/NE SEC. 5 T.3N., R.64W. 668' FNL 656' FEL EL 4776' N 40.25991 W 104.56772 PDOP 2.3

NOTES:

- THIS SKETCH DOES NOT REPRESENT A BOUNDARY SURVEY.
- THE DATUM FOR THE LATITUDES AND LONGITUDES ON THIS SKETCH IS NAD83.

