

Zones: C/N

Surface: 650 ft / 212 sks.

Production: 7266 ft / 819 sks.

APPROVED

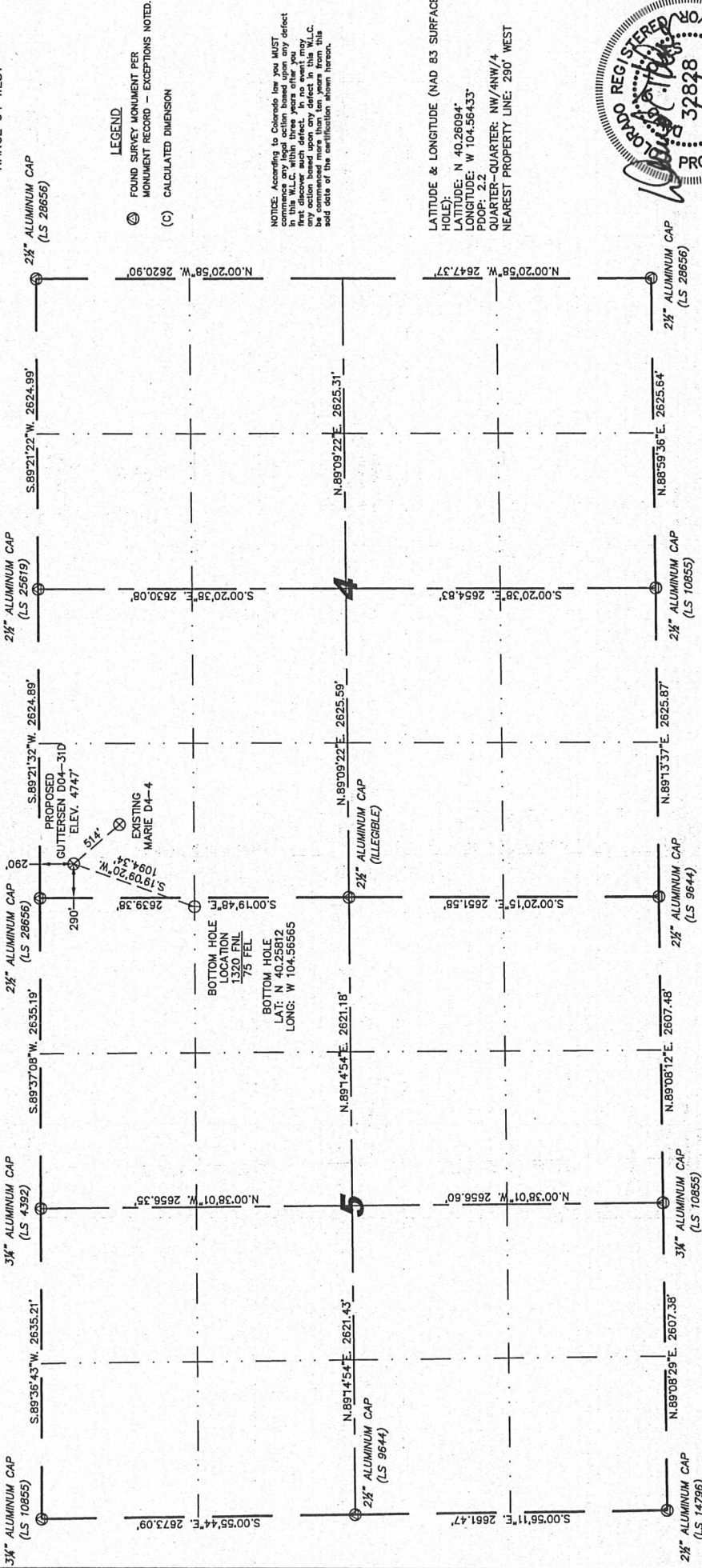
By nchoudhary at 9:56 am, 2/9/11

Steil Surveying Services, LLC 1102 West 19th Street P.O. BOX 2073 Cheyenne, Wyoming 82009

WELL LOCATION CERTIFICATE

THIS MAP DOES NOT REPRESENT A BOUNDARY SURVEY

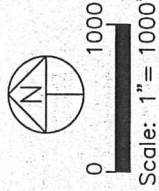
SECTION 4
TOWNSHIP 3 NORTH
RANGE 64 WEST



IN ACCORDANCE WITH A REQUEST FROM BRIAN D'ROSE - NOBLE ENERGY INC. STEIL SURVEYING SERVICES, LLC HAS DETERMINED THE LOCATION OF THE GUTTERSEN D04-31D WELL TO BE 290' FNL, 290' FW, AS MEASURED AT NINETY (90) DEGREES FROM THE SECTION CORNER AND THE NORTHEAST SECTION CORNER OF SAID SECTION.

I HEREBY CERTIFY THAT THIS WELL LOCATION CERTIFICATE WAS PREPARED BY ME, OR UNDER MY DIRECT SUPERVISION, THAT THE FIELD WORK WAS COMPLETED ON 11/15/2010, FOR AND ON BEHALF OF THE CLIENT, AND THAT IT IS NOT TO BE RELIED UPON FOR ESTABLISHMENT OF FENCE, BUILDING, OR OTHER FUTURE IMPROVEMENT LINES.

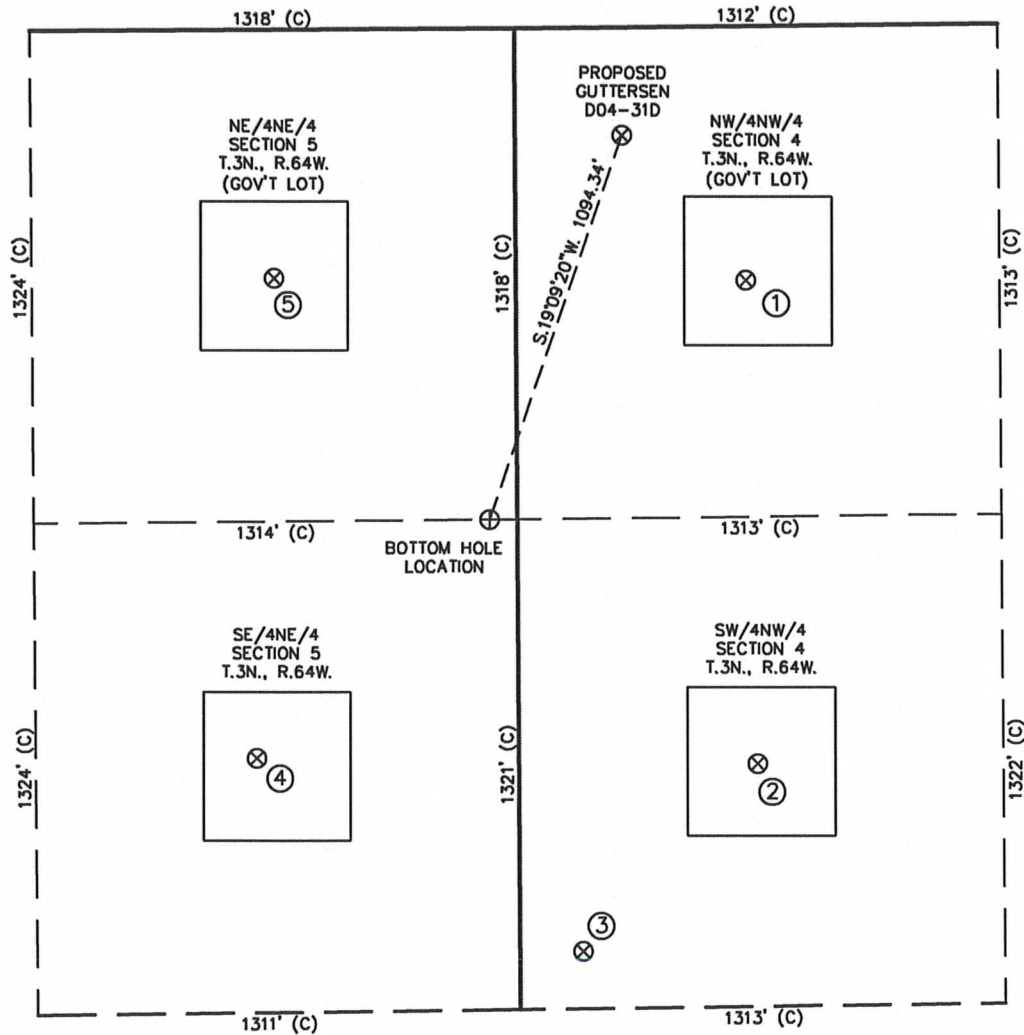
- NOTES:
- 1) BASIS OF BEARINGS FOR THIS MAP ARE BASED UPON GPS OBSERVATIONS MADE ON 09/15/2009 BETWEEN MONUMENTS LOCATED AT THE SOUTHEAST SECTION CORNER AND THE NORTHEAST SECTION CORNER OF SAID SECTION AND WITH ALL BEARINGS SHOWN HEREON RELATIVE THERETO, ZONE) NAD 83.
 - 2) ELEVATIONS ARE BASED UPON NGS OPUS SOLUTION NAD 83 DATUM.
 - 3) THE NEAREST EXISTING WELL IS: MARIE D4-4, 514' SOUTHEAST.
 - 4) SEE LOCATION DRAWING FOR ALL IMPROVEMENTS WITHIN VISIBLE IMPROVEMENTS LIMIT.
 - 5) THE LOCATION FALLS IN PASTURE LAND.



David C. Holmes
Professional Land Surveyor Registration No. 32828
State of Colorado
JOB #: 10086

SITE SKETCH - GUTTERSEN D04-31D

SECTIONS 4
TOWNSHIP 3 NORTH
RANGE 64 WEST



①	②	③	④	⑤
MARIE D4-4 NW/NW SEC. 4 T.3N., R.64W. 683' FNL 624' FWL EL 4745' N 40.25986 W 104.56314 PDOP 2.2	MARIE D4-5 SW/NW SEC. 4 T.3N., R.64W. 1984' FNL 646' FWL EL 4733' N 40.25629 W 104.56308 PDOP 2.1	GUTTERSEN D04-32 SW/NW SEC. 4 T.3N., R.64W. 2484' FNL 171' FWL EL 4745' N 40.25492 W 104.56479 PDOP 2.2	BECKER 5-4 SE/NE SEC. 5 T.3N., R.64W. 1959' FNL 711' FEL EL 4771' N 40.25637 W 104.56794 PDOP 1.9	BECKER 5-10 NE/NE SEC. 5 T.3N., R.64W. 668' FNL 656' FEL EL 4776' N 40.25991 W 104.56772 PDOP 2.3

NOTES:

- THIS SKETCH DOES NOT REPRESENT A BOUNDARY SURVEY.
- THE DATUM FOR THE LATITUDES AND LONGITUDES ON THIS SKETCH IS NAD83.

