

<div>PHOENIX SURVEYS, INC.</div> <div>COMPENSATED DENSITY COMPENSATED NEUTRON HIGH RESOLUTION INDUCTION</div>		Company Well Field County		Location BHL - 1240 FNL & 1324 FEL SE NE Sec - 19, Twp - 5N, Rge - 62W		Other Services None	
Company Well Field County		Bonanza Creek Energy, Inc. Antelope 19 G Wattenberg Weld		State/Province Colorado			
Permanent Datum Log Measured From Drilling Measured From		GL KB KB		Elevation 4651 4651 4651		K.B. 4652 D.F. 4651 G.L. 4651	
Date Run Number Depth Driller Bottom Logger Bottom Logged Interval		March 08 2011 1 6235 6319 6319					
Top Log Interval Casing Driller Casing Logger Bore Size Type Fluid in Hole		Casing 4.5 4.5 7-7/8" Polymer Gel					
Density / Viscosity pH / Fluid Loss Source of Sample Run @ Meas. Temp Rim @ Meas. Temp Rim @ Meas. Temp Source of Rim / Rmc Run @ BHT Time Circulation Stopped Time Logged on Bottom Maximum Recorded Temperature Equipment Number Location Recorded By		9.0 / 10.4 Flowline 3.34 @ 64 F 2.61 @ 64 F 4.18 @ 64 F Measure Calc 1.05 @ 204 F 0130 1145 204 F 52 Brighton CO Madel Station Brian Cunningham					

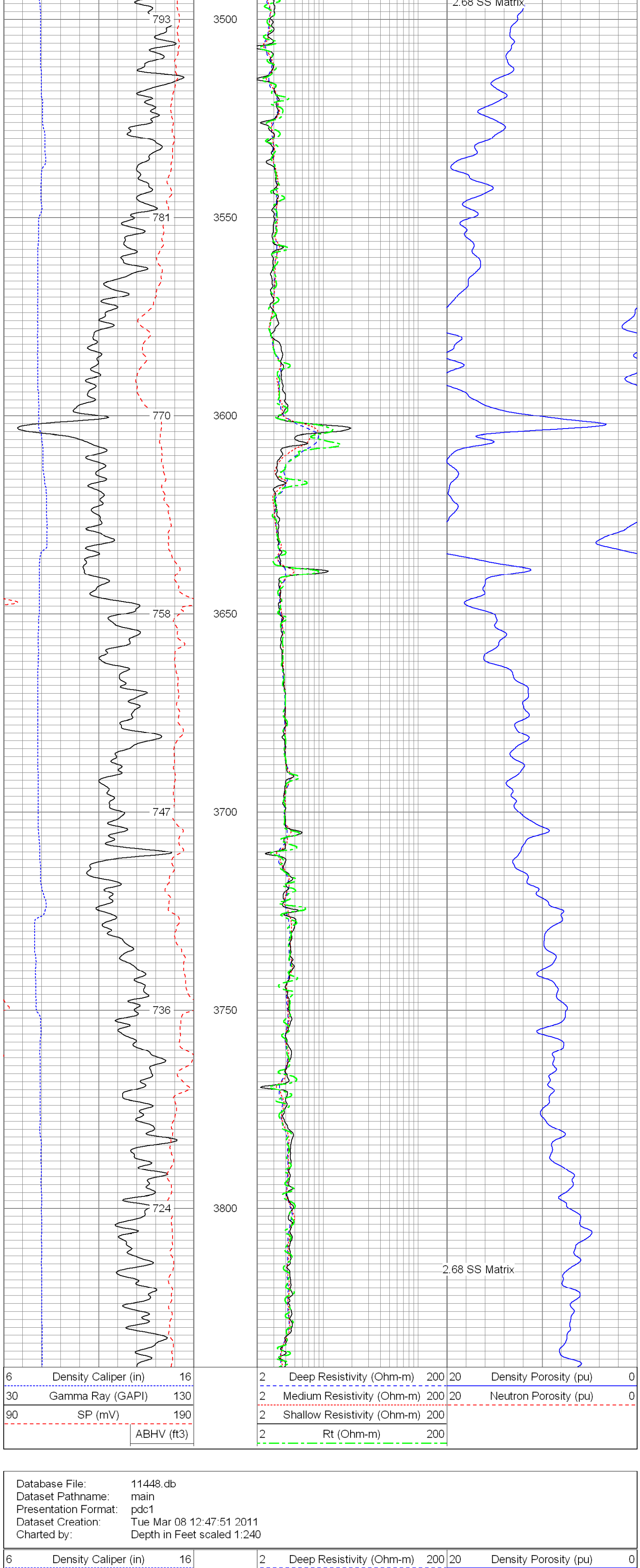
<<< Fold Here >>>

All interpretations are opinions based on inferences from electrical or other measurements and we cannot and do not guarantee the accuracy or correctness of any interpretation, and we shall not, except in the case of gross or willful negligence on our part, be liable or responsible for any loss, costs, damages, or expenses incurred or sustained by anyone resulting from any interpretation made by any of our officers, agents or employees. These interpretations are also subject to our general terms and conditions set out in our current Price Schedule.

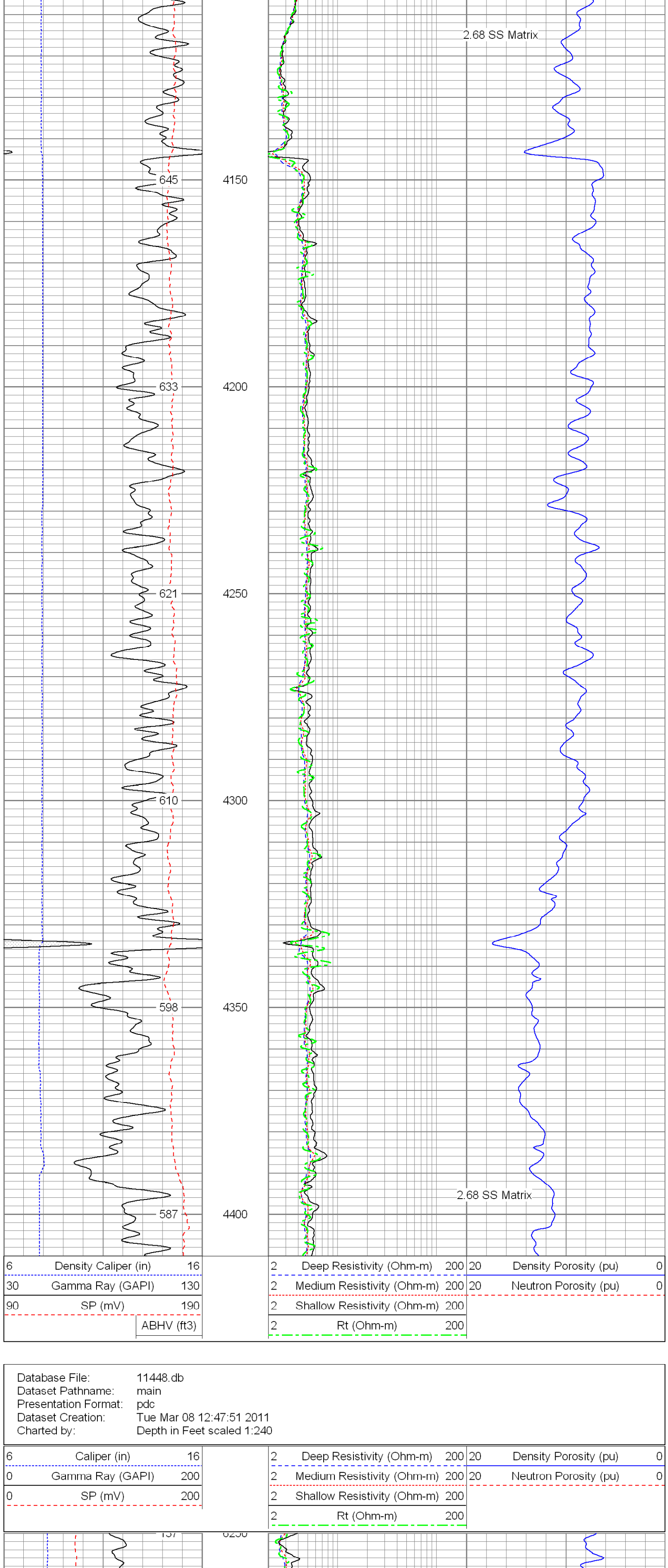
Comments

Annular volume calculated for 4.5" casing  
Mid Continent Rig 1  
Thank you for using Phoenix Surveys!!  
API #: 05-123-32712-0000  
No Repeat due to hole conditions!

Database File: 11448.db	Dataset Pathname: main	Dataset Creation: Tue Mar 08 12:47:51 2011	Charted by: Depth in Feet scaled 1:240
6 Density Caliper (in)	16	2 Deep Resistivity (Ohm-m)	200 20 Density Porosity (pu)
30 Gamma Ray (GAPI)	130	2 Medium Resistivity (Ohm-m)	200 20 Neutron Porosity (pu)
90 SP (mV)	190	2 Shallow Resistivity (Ohm-m)	200
ABHV (ft3)		2 Rt (Ohm-m)	200



Database File: 11448.db	Dataset Pathname: main	Dataset Creation: Tue Mar 08 12:47:51 2011	Charted by: Depth in Feet scaled 1:240
6 Density Caliper (in)	16	2 Deep Resistivity (Ohm-m)	200 20 Density Porosity (pu)
30 Gamma Ray (GAPI)	130	2 Medium Resistivity (Ohm-m)	200 20 Neutron Porosity (pu)
90 SP (mV)	190	2 Shallow Resistivity (Ohm-m)	200
ABHV (ft3)		2 Rt (Ohm-m)	200



Database File: 11448.db	Dataset Pathname: main	Dataset Creation: Tue Mar 08 12:47:51 2011	Charted by: Depth in Feet scaled 1:240
6 Caliper (in)	16	2 Deep Resistivity (Ohm-m)	200 20 Density Porosity (pu)
0 Gamma Ray (GAPI)	200	2 Medium Resistivity (Ohm-m)	200 20 Neutron Porosity (pu)
0 SP (mV)	200	2 Shallow Resistivity (Ohm-m)	200
		2 Rt (Ohm-m)	200

