



Bill Barrett Corporation

Bill Barrett Corp.

Garfield County, Colorado [NAD83]

MDP 25 Pad

Federal 34B-33-691

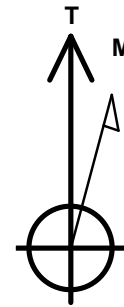
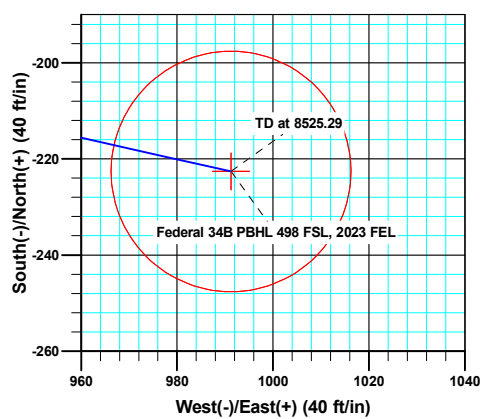
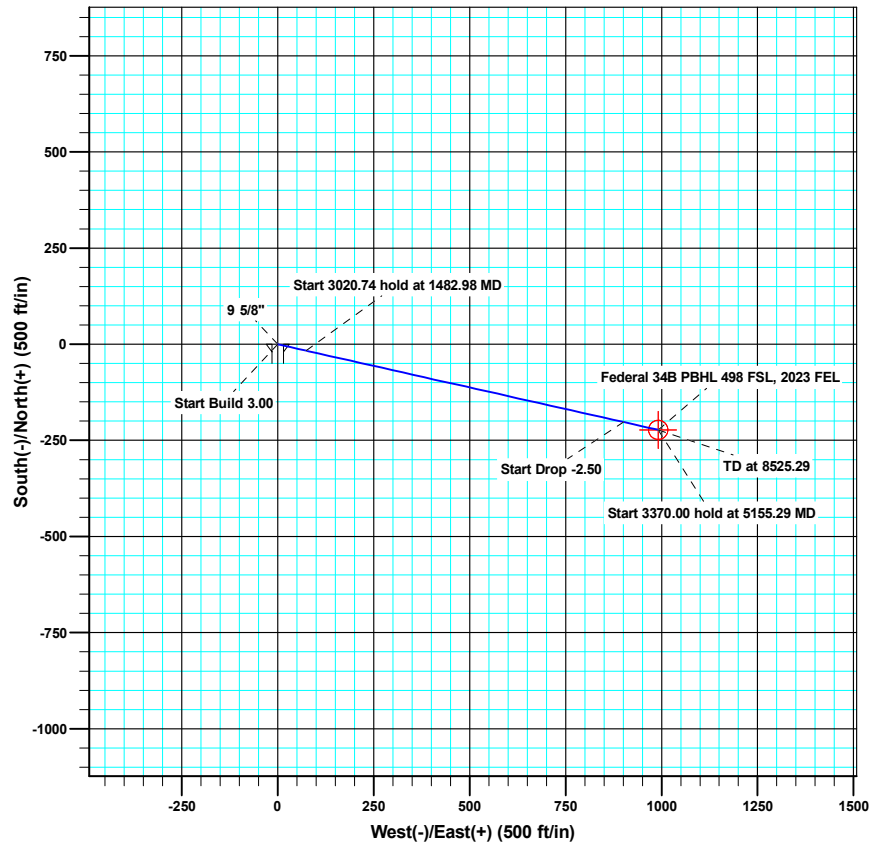
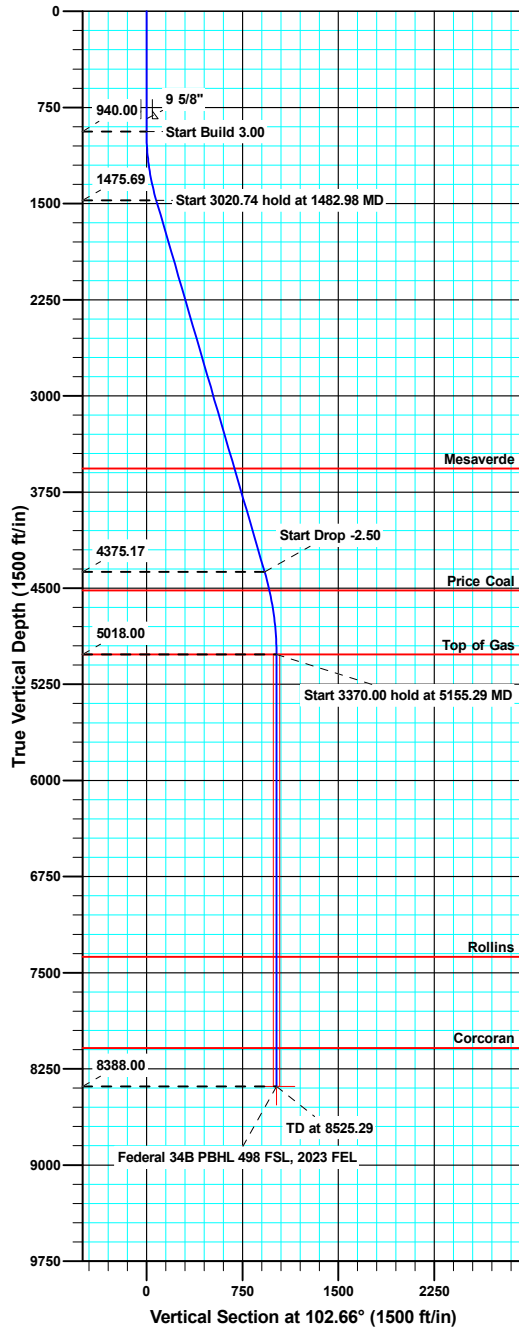
Wellbore #1

Plan: plan1 06may11 rbw

Standard Planning Report

13 May, 2011





Azimuths to True North
Magnetic North: 10.17°

Magnetic Field
Strength: 52303.8snT
Dip Angle: 65.81°
Date: 05/06/2011
Model: IGRF2010

SECTION DETAILS

MD	Inc	Azi	TVD	+N/-S	+E/-W	Dleg	TFace	VSect	Target
0.00	0.000	0.00	0.00	0.00	0.00	0.00	0.00	0.00	
940.00	0.000	0.00	940.00	0.00	0.00	0.00	0.00	0.00	
1482.98	16.289	102.66	1475.69	-16.80	74.80	3.00	102.66	76.67	
4503.71	16.289	102.66	4375.17	-202.44	901.50	0.00	0.00	923.95	
5155.29	0.000	0.00	5018.00	-222.60	991.26	2.50	180.00	1015.95	Federal 34B Target
8525.29	0.000	0.00	8388.00	-222.60	991.26	0.00	0.00	1015.95	Federal 34B PBHL 498 FSL, 2023 FEL

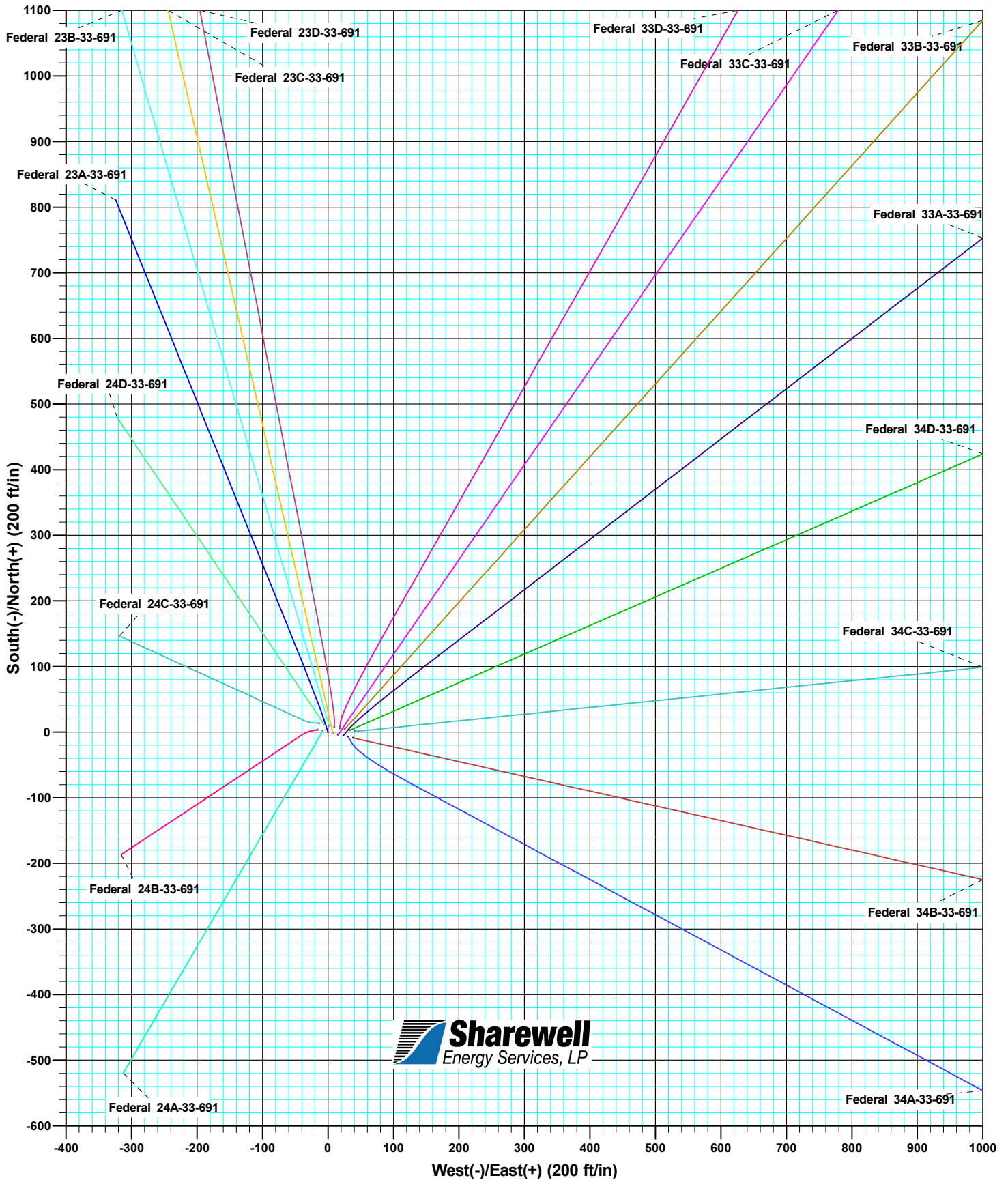
WELL DETAILS: MDP 25 Pad

Ground Level: 6595.00



Bill Barrett Corporation

North American Datum 1983		US State Plane 1983		Colorado Central Zone	
+N/-S	+E/-W	Northing	Easting	Latitude	Longitude
0.00	0.00	1606011.85	2418614.90	39° 28' 45.05 N	107° 33' 35.53 W



Database:	Compass VM	Local Co-ordinate Reference:	Well Federal 34B-33-691
Company:	Bill Barrett Corp.	TVD Reference:	KB @ 6618.00ft
Project:	Garfield County, Colorado [NAD83]	MD Reference:	KB @ 6618.00ft
Site:	MDP 25 Pad	North Reference:	True
Well:	Federal 34B-33-691	Survey Calculation Method:	Minimum Curvature
Wellbore:	Wellbore #1		
Design:	plan1 06may11 rbw		

Project	Garfield County, Colorado [NAD83]		
Map System:	US State Plane 1983	System Datum:	Mean Sea Level
Geo Datum:	North American Datum 1983		
Map Zone:	Colorado Central Zone		

Site		MDP 25 Pad			
Site Position:		Northing:	1,606,013.85 usft	Latitude:	39° 28' 45.07 N
From:	Lat/Long	Easting:	2,418,607.05 usft	Longitude:	107° 33' 35.63 W
Position Uncertainty:	0.00 ft	Slot Radius:	1.10 ft	Grid Convergence:	-1.30 °

Well	Federal 34B-33-691					
Well Position	+N/-S	-10.57 ft	Northing:	1,606,002.22 usft	Latitude:	39° 28' 44.96 N
	+E/-W	46.86 ft	Easting:	2,418,653.65 usft	Longitude:	107° 33' 35.03 W
Position Uncertainty		0.00 ft	Wellhead Elevation:		Ground Level:	6,595.00 ft

Wellbore	Wellbore #1				
Magnetics	Model Name	Sample Date	Declination (°)	Dip Angle (°)	Field Strength (nT)
	IGRF2010	05/06/11	10.17	65.81	52,304

Design	plan1 06may11 rbw			
Audit Notes:				
Version:	Phase:	PROTOTYPE	Tie On Depth:	0.00
Vertical Section:	Depth From (TVD) (ft)	+N/-S (ft)	+E/-W (ft)	Direction (°)
	0.00	0.00	0.00	102.66

Plan Sections										
Measured Depth (ft)	Inclination (°)	Azimuth (°)	Vertical Depth (ft)	+N/-S (ft)	+E/-W (ft)	Dogleg Rate (°/100ft)	Build Rate (°/100ft)	Turn Rate (°/100ft)	TFO (°)	Target
0.00	0.000	0.00	0.00	0.00	0.00	0.00	0.00	0.00	0.00	
940.00	0.000	0.00	940.00	0.00	0.00	0.00	0.00	0.00	0.00	
1,482.98	16.289	102.66	1,475.69	-16.80	74.80	3.00	3.00	0.00	102.66	
4,503.71	16.289	102.66	4,375.17	-202.44	901.50	0.00	0.00	0.00	0.00	
5,155.29	0.000	0.00	5,018.00	-222.60	991.26	2.50	-2.50	0.00	180.00	Federal 34B Target
8,525.29	0.000	0.00	8,388.00	-222.60	991.26	0.00	0.00	0.00	0.00	Federal 34B PBHL 49

Database:	Compass VM	Local Co-ordinate Reference:	Well Federal 34B-33-691
Company:	Bill Barrett Corp.	TVD Reference:	KB @ 6618.00ft
Project:	Garfield County, Colorado [NAD83]	MD Reference:	KB @ 6618.00ft
Site:	MDP 25 Pad	North Reference:	True
Well:	Federal 34B-33-691	Survey Calculation Method:	Minimum Curvature
Wellbore:	Wellbore #1		
Design:	plan1 06may11 rbw		

Planned Survey									
Measured Depth (ft)	Inclination (°)	Azimuth (°)	Vertical Depth (ft)	+N/-S (ft)	+E/-W (ft)	Vertical Section (ft)	Dogleg Rate (°/100ft)	Build Rate (°/100ft)	Turn Rate (°/100ft)
940.00	0.000	0.00	940.00	0.00	0.00	0.00	0.00	0.00	0.00
Start Build 3.00									
1,000.00	1.800	102.66	999.99	-0.21	0.92	0.94	3.00	3.00	0.00
1,100.00	4.800	102.66	1,099.81	-1.47	6.54	6.70	3.00	3.00	0.00
1,200.00	7.800	102.66	1,199.20	-3.87	17.24	17.67	3.00	3.00	0.00
1,300.00	10.800	102.66	1,297.87	-7.41	33.01	33.83	3.00	3.00	0.00
1,400.00	13.800	102.66	1,395.57	-12.08	53.79	55.13	3.00	3.00	0.00
1,482.98	16.289	102.66	1,475.69	-16.80	74.80	76.67	3.00	3.00	0.00
Start 3020.74 hold at 1482.98 MD									
1,500.00	16.289	102.66	1,492.03	-17.84	79.46	81.44	0.00	0.00	0.00
1,600.00	16.289	102.66	1,588.02	-23.99	106.83	109.49	0.00	0.00	0.00
1,700.00	16.289	102.66	1,684.00	-30.14	134.20	137.54	0.00	0.00	0.00
1,800.00	16.289	102.66	1,779.99	-36.28	161.56	165.59	0.00	0.00	0.00
1,900.00	16.289	102.66	1,875.97	-42.43	188.93	193.64	0.00	0.00	0.00
2,000.00	16.289	102.66	1,971.96	-48.57	216.30	221.69	0.00	0.00	0.00
2,100.00	16.289	102.66	2,067.95	-54.72	243.67	249.73	0.00	0.00	0.00
2,200.00	16.289	102.66	2,163.93	-60.86	271.03	277.78	0.00	0.00	0.00
2,300.00	16.289	102.66	2,259.92	-67.01	298.40	305.83	0.00	0.00	0.00
2,400.00	16.289	102.66	2,355.90	-73.16	325.77	333.88	0.00	0.00	0.00
2,500.00	16.289	102.66	2,451.89	-79.30	353.13	361.93	0.00	0.00	0.00
2,600.00	16.289	102.66	2,547.87	-85.45	380.50	389.98	0.00	0.00	0.00
2,700.00	16.289	102.66	2,643.86	-91.59	407.87	418.03	0.00	0.00	0.00
2,800.00	16.289	102.66	2,739.85	-97.74	435.24	446.08	0.00	0.00	0.00
2,900.00	16.289	102.66	2,835.83	-103.88	462.60	474.12	0.00	0.00	0.00
3,000.00	16.289	102.66	2,931.82	-110.03	489.97	502.17	0.00	0.00	0.00
3,100.00	16.289	102.66	3,027.80	-116.17	517.34	530.22	0.00	0.00	0.00
3,200.00	16.289	102.66	3,123.79	-122.32	544.71	558.27	0.00	0.00	0.00
3,300.00	16.289	102.66	3,219.78	-128.47	572.07	586.32	0.00	0.00	0.00
3,400.00	16.289	102.66	3,315.76	-134.61	599.44	614.37	0.00	0.00	0.00
3,500.00	16.289	102.66	3,411.75	-140.76	626.81	642.42	0.00	0.00	0.00
3,600.00	16.289	102.66	3,507.73	-146.90	654.17	670.47	0.00	0.00	0.00
3,662.79	16.289	102.66	3,568.00	-150.76	671.36	688.08	0.00	0.00	0.00
Mesaverde									
3,700.00	16.289	102.66	3,603.72	-153.05	681.54	698.51	0.00	0.00	0.00
3,800.00	16.289	102.66	3,699.70	-159.19	708.91	726.56	0.00	0.00	0.00
3,900.00	16.289	102.66	3,795.69	-165.34	736.28	754.61	0.00	0.00	0.00
4,000.00	16.289	102.66	3,891.68	-171.49	763.64	782.66	0.00	0.00	0.00
4,100.00	16.289	102.66	3,987.66	-177.63	791.01	810.71	0.00	0.00	0.00
4,200.00	16.289	102.66	4,083.65	-183.78	818.38	838.76	0.00	0.00	0.00
4,300.00	16.289	102.66	4,179.63	-189.92	845.74	866.81	0.00	0.00	0.00
4,400.00	16.289	102.66	4,275.62	-196.07	873.11	894.86	0.00	0.00	0.00
4,500.00	16.289	102.66	4,371.60	-202.21	900.48	922.91	0.00	0.00	0.00
4,503.71	16.289	102.66	4,375.17	-202.44	901.50	923.95	0.00	0.00	0.00
Start Drop -2.50									
4,600.00	13.882	102.66	4,468.13	-207.93	925.94	949.00	2.50	-2.50	0.00
4,651.23	12.601	102.66	4,518.00	-210.50	937.40	960.74	2.50	-2.50	0.00
Price Coal									
4,700.00	11.382	102.66	4,565.70	-212.72	947.28	970.87	2.50	-2.50	0.00
4,800.00	8.882	102.66	4,664.13	-216.58	964.44	988.46	2.50	-2.50	0.00
4,900.00	6.382	102.66	4,763.24	-219.49	977.40	1,001.74	2.50	-2.50	0.00
5,000.00	3.882	102.66	4,862.83	-221.45	986.13	1,010.69	2.50	-2.50	0.00
5,100.00	1.382	102.66	4,962.72	-222.45	990.61	1,015.28	2.50	-2.50	0.00
5,155.29	0.000	0.00	5,018.00	-222.60	991.26	1,015.95	2.50	-2.50	0.00

Database:	Compass VM	Local Co-ordinate Reference:	Well Federal 34B-33-691
Company:	Bill Barrett Corp.	TVD Reference:	KB @ 6618.00ft
Project:	Garfield County, Colorado [NAD83]	MD Reference:	KB @ 6618.00ft
Site:	MDP 25 Pad	North Reference:	True
Well:	Federal 34B-33-691	Survey Calculation Method:	Minimum Curvature
Wellbore:	Wellbore #1		
Design:	plan1 06may11 rbw		

Planned Survey									
Measured Depth (ft)	Inclination (°)	Azimuth (°)	Vertical Depth (ft)	+N/-S (ft)	+E/-W (ft)	Vertical Section (ft)	Dogleg Rate (°/100ft)	Build Rate (°/100ft)	Turn Rate (°/100ft)
Start 3370.00 hold at 5155.29 MD - Top of Gas - Federal 34B Target									
5,200.00	0.000	0.00	5,062.71	-222.60	991.26	1,015.95	0.00	0.00	0.00
5,300.00	0.000	0.00	5,162.71	-222.60	991.26	1,015.95	0.00	0.00	0.00
5,400.00	0.000	0.00	5,262.71	-222.60	991.26	1,015.95	0.00	0.00	0.00
5,500.00	0.000	0.00	5,362.71	-222.60	991.26	1,015.95	0.00	0.00	0.00
5,600.00	0.000	0.00	5,462.71	-222.60	991.26	1,015.95	0.00	0.00	0.00
5,700.00	0.000	0.00	5,562.71	-222.60	991.26	1,015.95	0.00	0.00	0.00
5,800.00	0.000	0.00	5,662.71	-222.60	991.26	1,015.95	0.00	0.00	0.00
5,900.00	0.000	0.00	5,762.71	-222.60	991.26	1,015.95	0.00	0.00	0.00
6,000.00	0.000	0.00	5,862.71	-222.60	991.26	1,015.95	0.00	0.00	0.00
6,100.00	0.000	0.00	5,962.71	-222.60	991.26	1,015.95	0.00	0.00	0.00
6,200.00	0.000	0.00	6,062.71	-222.60	991.26	1,015.95	0.00	0.00	0.00
6,300.00	0.000	0.00	6,162.71	-222.60	991.26	1,015.95	0.00	0.00	0.00
6,400.00	0.000	0.00	6,262.71	-222.60	991.26	1,015.95	0.00	0.00	0.00
6,500.00	0.000	0.00	6,362.71	-222.60	991.26	1,015.95	0.00	0.00	0.00
6,600.00	0.000	0.00	6,462.71	-222.60	991.26	1,015.95	0.00	0.00	0.00
6,700.00	0.000	0.00	6,562.71	-222.60	991.26	1,015.95	0.00	0.00	0.00
6,800.00	0.000	0.00	6,662.71	-222.60	991.26	1,015.95	0.00	0.00	0.00
6,900.00	0.000	0.00	6,762.71	-222.60	991.26	1,015.95	0.00	0.00	0.00
7,000.00	0.000	0.00	6,862.71	-222.60	991.26	1,015.95	0.00	0.00	0.00
7,100.00	0.000	0.00	6,962.71	-222.60	991.26	1,015.95	0.00	0.00	0.00
7,200.00	0.000	0.00	7,062.71	-222.60	991.26	1,015.95	0.00	0.00	0.00
7,300.00	0.000	0.00	7,162.71	-222.60	991.26	1,015.95	0.00	0.00	0.00
7,400.00	0.000	0.00	7,262.71	-222.60	991.26	1,015.95	0.00	0.00	0.00
7,500.00	0.000	0.00	7,362.71	-222.60	991.26	1,015.95	0.00	0.00	0.00
7,515.29	0.000	0.00	7,378.00	-222.60	991.26	1,015.95	0.00	0.00	0.00
Rollins									
7,600.00	0.000	0.00	7,462.71	-222.60	991.26	1,015.95	0.00	0.00	0.00
7,700.00	0.000	0.00	7,562.71	-222.60	991.26	1,015.95	0.00	0.00	0.00
7,800.00	0.000	0.00	7,662.71	-222.60	991.26	1,015.95	0.00	0.00	0.00
7,900.00	0.000	0.00	7,762.71	-222.60	991.26	1,015.95	0.00	0.00	0.00
8,000.00	0.000	0.00	7,862.71	-222.60	991.26	1,015.95	0.00	0.00	0.00
8,100.00	0.000	0.00	7,962.71	-222.60	991.26	1,015.95	0.00	0.00	0.00
8,200.00	0.000	0.00	8,062.71	-222.60	991.26	1,015.95	0.00	0.00	0.00
8,225.29	0.000	0.00	8,088.00	-222.60	991.26	1,015.95	0.00	0.00	0.00
Corcoran									
8,300.00	0.000	0.00	8,162.71	-222.60	991.26	1,015.95	0.00	0.00	0.00
8,400.00	0.000	0.00	8,262.71	-222.60	991.26	1,015.95	0.00	0.00	0.00
8,500.00	0.000	0.00	8,362.71	-222.60	991.26	1,015.95	0.00	0.00	0.00
8,525.29	0.000	0.00	8,388.00	-222.60	991.26	1,015.95	0.00	0.00	0.00
TD at 8525.29 - Federal 34B PBHL 498 FSL, 2023 FEL									

Database:	Compass VM	Local Co-ordinate Reference:	Well Federal 34B-33-691
Company:	Bill Barrett Corp.	TVD Reference:	KB @ 6618.00ft
Project:	Garfield County, Colorado [NAD83]	MD Reference:	KB @ 6618.00ft
Site:	MDP 25 Pad	North Reference:	True
Well:	Federal 34B-33-691	Survey Calculation Method:	Minimum Curvature
Wellbore:	Wellbore #1		
Design:	plan1 06may11 rbw		

Design Targets									
Target Name	Dip Angle (°)	Dip Dir. (°)	TVD (ft)	+N/-S (ft)	+E/-W (ft)	Northing (usft)	Easting (usft)	Latitude	Longitude
- hit/miss target									
- Shape									
Federal 34B Target	0.000	0.00	5,018.00	-222.60	991.26	1,605,757.20	2,419,639.61	39° 28' 42.76 N	107° 33' 22.39 W
- plan hits target center									
- Circle (radius 25.00)									
Federal 34B PBHL 498 I	0.000	0.00	8,388.00	-222.60	991.26	1,605,757.20	2,419,639.61	39° 28' 42.76 N	107° 33' 22.39 W
- plan hits target center									
- Point									

Casing Points					
Measured Depth (ft)	Vertical Depth (ft)	Name	Casing Diameter (ft)	Hole Diameter (ft)	
839.00	839.00	9 5/8"	0.80	1.02	

Formations					
Measured Depth (ft)	Vertical Depth (ft)	Name	Lithology	Dip (°)	Dip Direction (°)
3,662.79	3,568.00	Mesaverde		0.00	
4,651.23	4,518.00	Price Coal		0.00	
5,155.29	5,018.00	Top of Gas		0.00	
7,515.29	7,378.00	Rollins		0.00	
8,225.29	8,088.00	Corcoran		0.00	

Plan Annotations				
Measured Depth (ft)	Vertical Depth (ft)	Local Coordinates		Comment
		+N/-S (ft)	+E/-W (ft)	
940.00	940.00	0.00	0.00	Start Build 3.00
1,482.98	1,475.69	-16.80	74.80	Start 3020.74 hold at 1482.98 MD
4,503.71	4,375.17	-202.44	901.50	Start Drop -2.50
5,155.29	5,018.00	-222.60	991.26	Start 3370.00 hold at 5155.29 MD
8,525.29	8,388.00	-222.60	991.26	TD at 8525.29