

T1S, R103W, 6th P.M.

FOUNDATION ENERGY MANAGEMENT

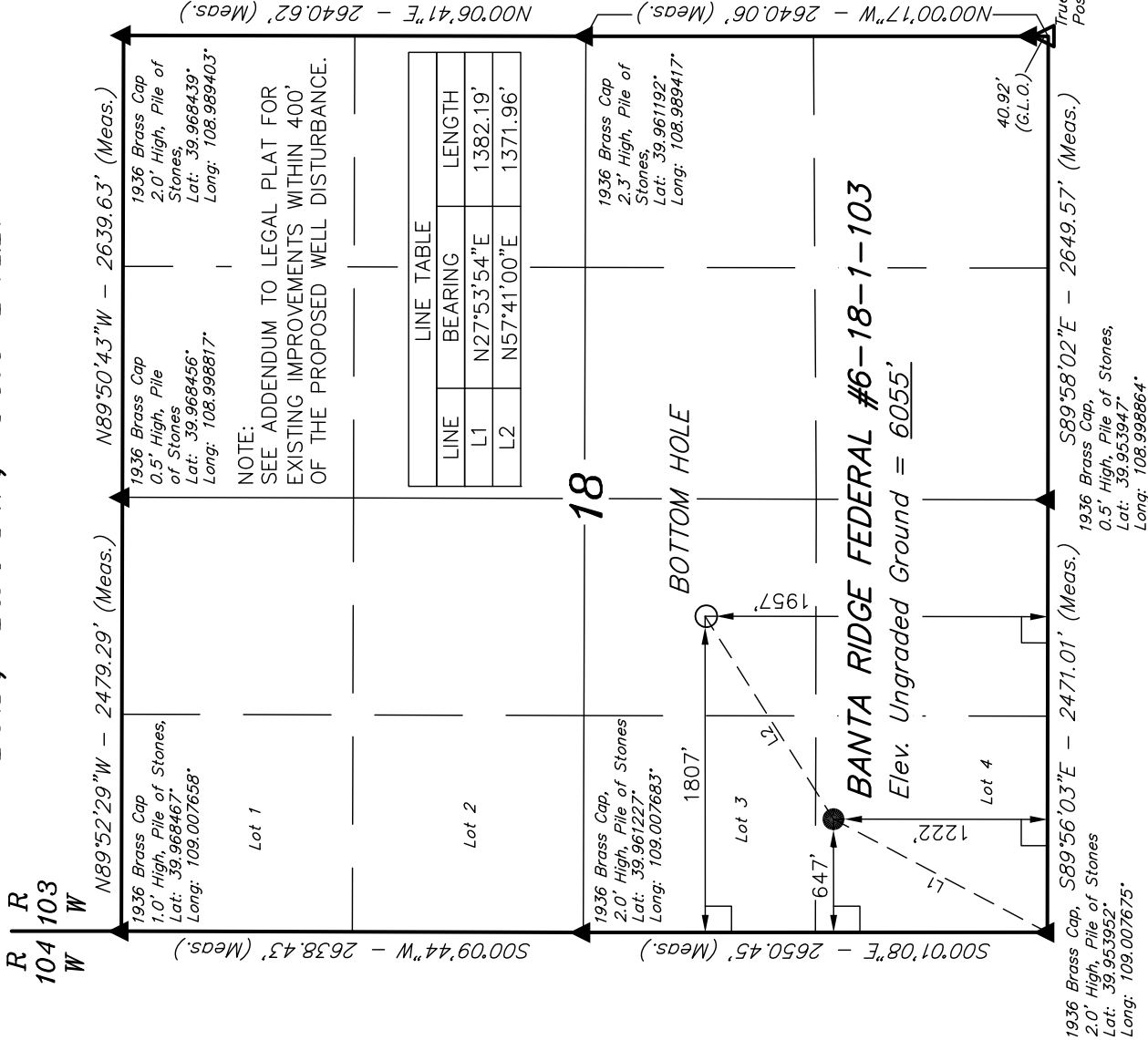
Well location, BANTA RIDGE FEDERAL #6-18-1-103, located as shown in LOT 4 of Section 18, T1S, R103W, 6th P.M., Rio Blanco County, Colorado.

BASIS OF ELEVATION

SPOT ELEVATION AT THE W.C. WEST 1/4 CORNER OF SECTION 9, T1S, R103W, 6th P.M. TAKEN FROM THE BANTY RIDGE QUADRANGLE, COLORADO, RIO BLANCO COUNTY, 7.5 MINUTE QUAD (TOPOGRAPHIC MAP) PUBLISHED BY THE UNITED STATES DEPARTMENT OF THE INTERIOR, GEOLOGICAL SURVEY. SAID ELEVATION IS MARKED AS BEING 5876 FEET.

BASIS OF BEARINGS

BASIS OF BEARINGS IS A G.P.S. OBSERVATION.

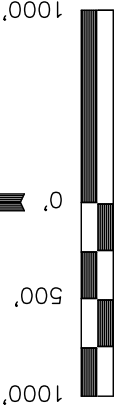


LEGEND:

- = 90° SYMBOL
- = PROPOSED WELL HEAD.
- ▲ = SECTION CORNERS LOCATED.
- △ = SECTION CORNERS RE-ESTABLISHED.
- (Not Set on Ground.)

PDOP = 1.8

NAD 83 (TARGET BOTTOM HOLE)	NAD 83 (SURFACE LOCATION)
LATITUDE = 39°57'33.55" (39.959319)	LATITUDE = 39°57'26.30" (39.957306)
LONGITUDE = 109°00'04.45" (109.001236)	LONGITUDE = 109°00'19.33" (109.005369)
NAD 27 (TARGET BOTTOM HOLE)	NAD 27 (SURFACE LOCATION)
LATITUDE = 39°57'33.66" (39.959350)	LATITUDE = 39°57'26.41" (39.957336)
LONGITUDE = 109°00'02.06" (109.000572)	LONGITUDE = 109°00'16.94" (109.004706)



CERTIFICATE

THIS IS TO CERTIFY THAT THE ABOVE PLAT WAS PREPARED, FROM FIELD NOTES OF ACTUAL SURVEYS MADE BY ME OR UNDER MY SUPERVISION AND THAT THE SAME ARE TRUE AND CORRECT TO THE BEST OF MY KNOWLEDGE AND BELIEF.

W.C. West
1936 Brass Cap
1.0' High,
Lat: 39.954058°
Long: 108.989414°

REVISED: 03-15-11 M.D.

UNTAH ENGINEERING & LAND SURVEYING
85 SOUTH 200 EAST - VERNAL, UTAH 84078
(435) 789-1017

SCALE 1" = 1000'	DATE SURVEYED: 01-27-11	DATE DRAWN: 02-10-11
PARTY G.S. G.B. M.D.	REFERENCES G.L.O. PLAT	
WEATHER COLD	FILE	
		FOUNDATION ENERGY MANAGEMENT