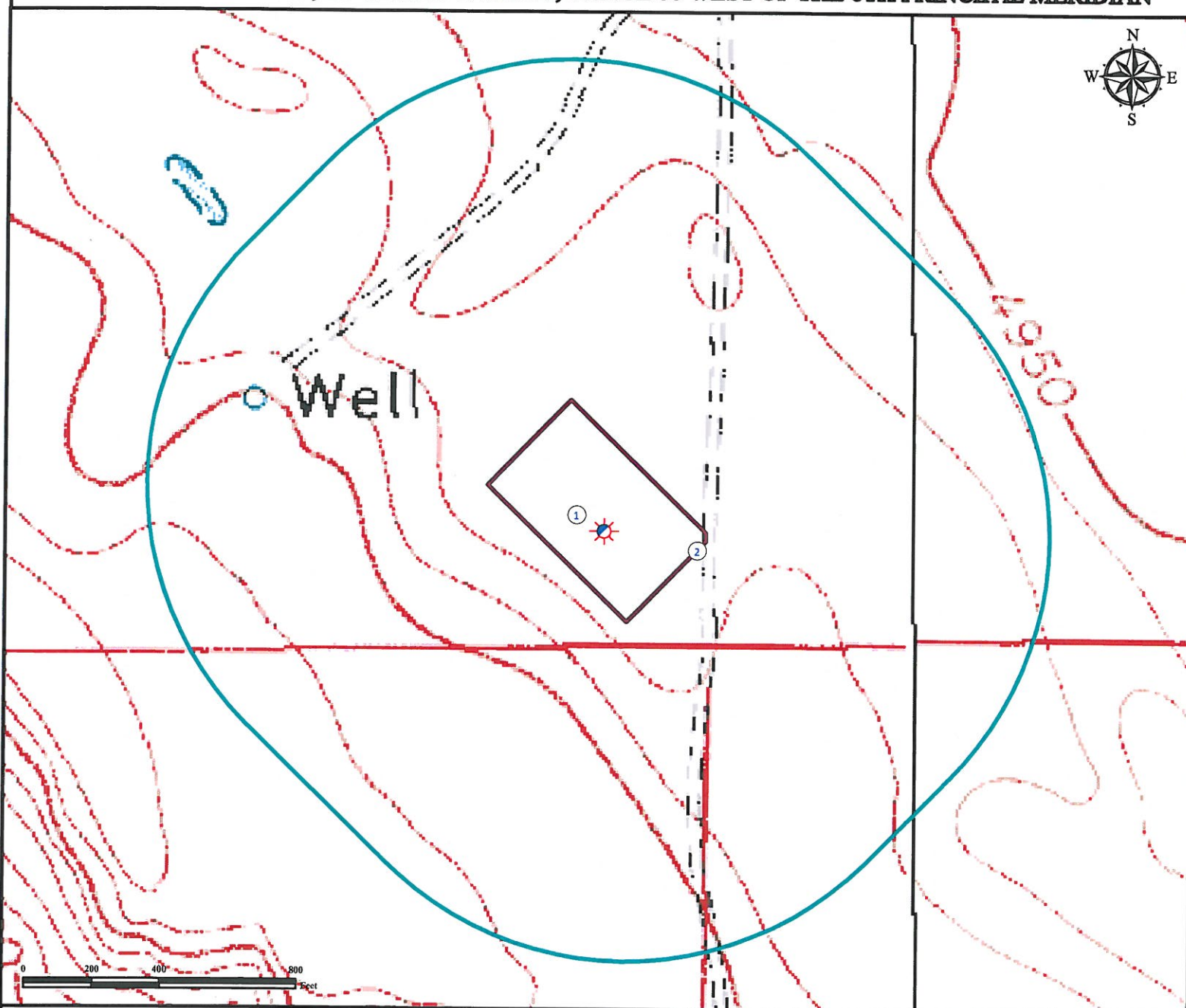


Hydrology Map

SLICK ROCK 19-44-7-60

SE¼ SE¼ SECTION 19, TOWNSHIP 7 NORTH, RANGE 60 WEST OF THE 6TH PRINCIPAL MERIDIAN



1. Proposed Well SLICK ROCK 19-44-7-60.

2. Operational Disturbance Area.

There are No Surface Waters Within 1000' of the Disturbed Area of the Proposed Oil and Gas Location.

Legend



Proposed Well



Disturbance Area



1000' Radius

Reference Location

** All Measurements are Made from
Reference Well

SLICK ROCK 19-44-7-60 (NAD83) **

LAT: 40.55441° LONG: -104.12874°

Elevation: 4976.3 Feet



Use our resources to find yours!

www.petro-fs.com

(303) 928-7128

Field Date: 04/14/2011
Drafting Date: 04/26/2011
Drafter: KLM
Checked By: BHF

Data Sources:
- Topo courtesy of USGS

Prepared for:

