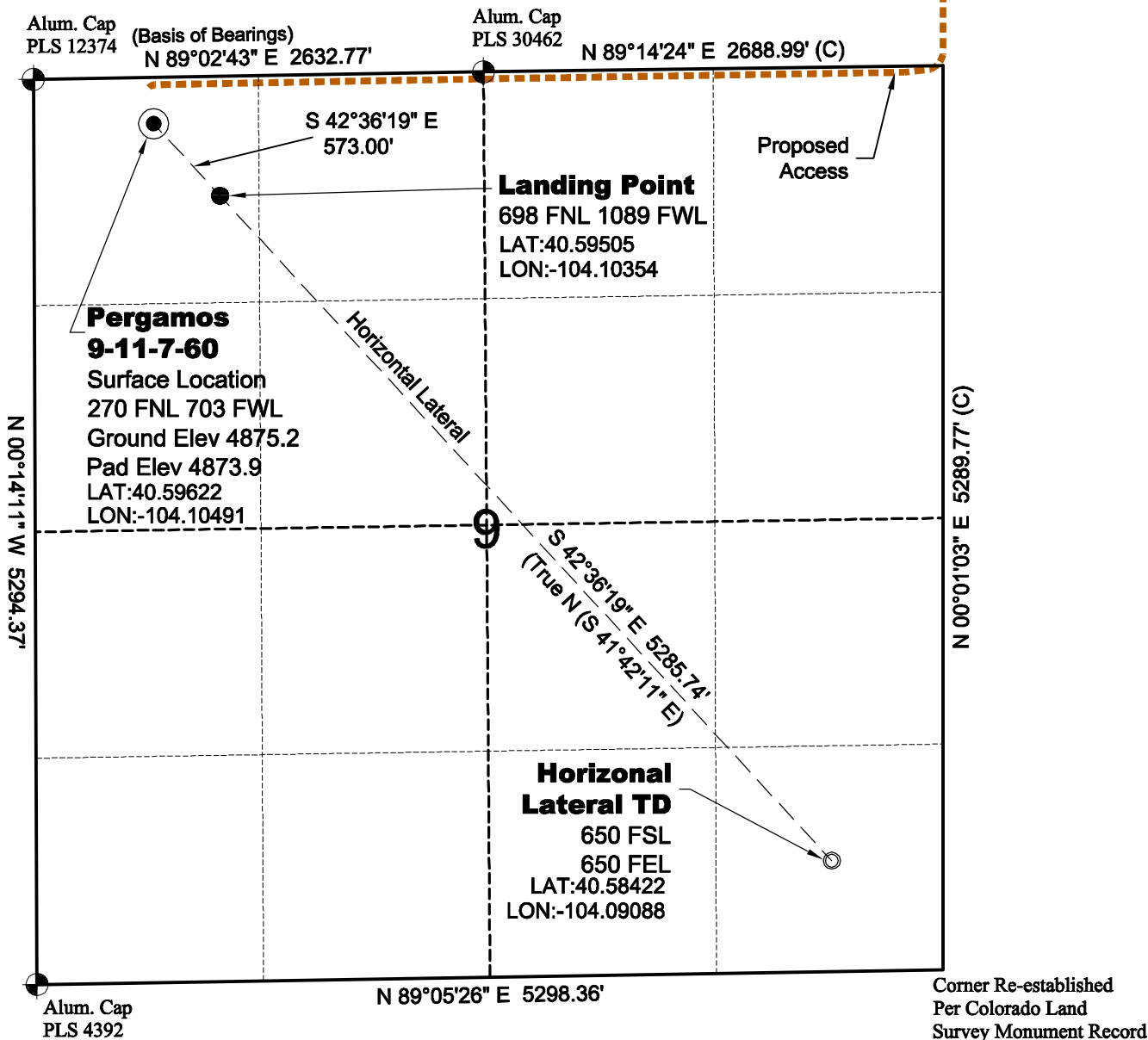


# WELL LOCATION MAP

PERGAMOS  
9-11-7-60 PAD

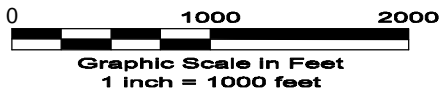


## SURVEYOR'S STATEMENT

The undersigned hereby states that the well location shown hereon was staked on the ground based on existing monumentation and/or physical evidence found in the field and is correct to the best of my knowledge, information and belief.

## NOTES

- 1.) Horizontal coordinates based on NGS control point "SNOW" and vertical datum based on NGS control point "G 209" with an elevation of 4955.32. NAVD 1988.
  - 2.) All directions, distances, and dimensions shown hereon are based on coordinates from the "Colorado coordinate system of 1983 north zone" (article 52 of title 38, C.R.S.).
  - 3.) All section line dimensions shown hereon are based on field measurements of existing monuments and/or physical evidence found in the field unless otherwise indicated. Refer to land survey plats deposited in Weld County.
  - 4.) Physical features shown hereon are for graphical representation only.
  - 5.) See Form 2A for visible improvements within 400' of wellhead.
  - 6.) Distances to nearest section lines are measured perpendicularly.
  - 7.) This is not a land survey nor land survey plat.
  - 8.) Date of Survey 3/16/11; Date of Drawing 3/22/11. REV 0
- PDOP Reading: 2.3 Instrument Operator: Dave Murrey



**GEO SURV**

LAND SURVEYING AND MAPPING  
LAFAYETTE - WINTER PARK  
Ph 303 666 0379 Fx 303 665 6320

**CARRIZO OIL & GAS, INC**  
PERGAMOS 9-11-7-60

SL NW1/4 NW1/4 SEC. 9 T7N R60W  
HL TD SE1/4 SE1/4 SEC. 9 T7N R60W  
6th PM WELD COUNTY COLORADO