

## The Road to Excellence Starts with Safety

Sold To #: 353810	Ship To #: 2856687	Quote #:	Sales Order #: 8208122
Customer: XTO ENERGY INC EBUSINESS		Customer Rep: Coffee, Ron	
Well Name: Hill Ranch	Well #: 02-16	API/UWI #:	
Field:	City (SAP): TRINIDAD	County/Parish: Las Animas	State: Colorado
Contractor: ??	Rig/Platform Name/Num: ??		
Job Purpose: Cement Multiple Stages			
Well Type: Development Well	Job Type: Cement Multiple Stages		
Sales Person: FLING, MATTHEW	Srvc Supervisor: WHEELER, JUSTIN	MBU ID Emp #: 196470	

## Job Personnel

HES Emp Name	Exp Hrs	Emp #	HES Emp Name	Exp Hrs	Emp #	HES Emp Name	Exp Hrs	Emp #
AARON, WESLEY J	6	403606	CHAVEZ, JEROME Christophe	6	458298	DIRKS, RICHARD E	6	485940
GIBBS, JASON Edwin	6	300487	PAUMEN, CORD Anthony	6	453759	WHEELER, JUSTIN W	6	196470
WILEY, JAMES A	6	440080						

## Equipment

HES Unit #	Distance-1 way	HES Unit #	Distance-1 way	HES Unit #	Distance-1 way	HES Unit #	Distance-1 way
10822531C	42 mile	10824253C	42 mile	10948694	42 mile	11026160	42 mile
11064046	42 mile	11515861C	42 mile	11562570C	42 mile	11633848	42 mile

## Job Hours

Date	On Location Hours	Operating Hours	Date	On Location Hours	Operating Hours	Date	On Location Hours	Operating Hours
5-31-11	6	3						

TOTAL Total is the sum of each column separately

## Job

## Job Times

Formation Name	Formation Depth (MD)	Top	Bottom	Form Type	Job depth MD	Job Depth TVD	Water Depth	Perforation Depth (MD)	From	To	Called Out	Date	Time	Time Zone
				BHST	2001. ft	2001. ft	Wk Ht Above Floor				31 - May - 2011	00:00	MST	
											On Location	31 - May - 2011	10:30	MST
											Job Started	31 - May - 2011	13:26	MST
											Job Completed	31 - May - 2011	15:21	MST
											Departed Loc	31 - May - 2011	16:30	MST

## Well Data

Description	New / Used	Max pressure psig	Size in	ID in	Weight lbm/ft	Thread	Grade	Top MD ft	Bottom MD ft	Top TVD ft	Bottom TVD ft
7 7/8" Openhole				7.875				497.	2020.		
Multiple Stage Cementer	Unknown								1125.		
5 1/2" Production Casing	Unknown		5.5	4.95	15.5		J-55		2001.		
8 5/8" Surface Casing	Unknown		8.625	8.097	24.		J-55		497.		

## Tools and Accessories

Type	Size	Qty	Make	Depth	Type	Size	Qty	Make	Depth	Type	Size	Qty	Make
Guide Shoe					Packer					Top Plug			
Float Shoe					Bridge Plug					Bottom Plug			
Float Collar	5 1/2"	1		1954'	Retainer					SSR plug set	5 1/2"	1	
Insert Float										Plug Container			
Stage Tool	5 1/2"	1		1125'						Centralizers			

## Miscellaneous Materials

Gelling Agt	Conc	Surfactant	Conc	Acid Type	Qty	Conc	%
Treatment Fld	Conc	Inhibitor	Conc	Sand Type	Size	Qty	

## Fluid Data



Stage/Plug #: 1									
Fluid #	Stage Type	Fluid Name	Qty	Qty uom	Mixing Density lbm/gal	Yield ft <sup>3</sup> /sk	Mix Fluid Gal/sk	Rate bbl/min	Total Mix Fluid Gal/sk
1	FRESH WATER		58	bbl	8.33	.0	.0	.0	
2	GELLED WATER		20	bbl	8.33	.0	.0	.0	
0.2 gal/Mgal		LGC-VI UC, BULK (101582755)							
3	TUNED LIGHT TRINIDAD	TUNED LIGHT (TM) SYSTEM (452984)	135	sacks	10.	2.24	7.93		7.93
7.93 Gal		FRESH WATER							
4	DISPLACEMENT		46.5	bbl	8.33	.0	.0	.0	
Stage/Plug #: 2									
Fluid #	Stage Type	Fluid Name	Qty	Qty uom	Mixing Density uom	Yield uom	Mix Fluid uom	Rate uom	Total Mix Fluid uom
1	FRESH WATER		10	bbl	8.33	.0	.0	.0	
2	GELLED WATER		20	bbl	8.33	.0	.0	.0	
0.2 gal/Mgal		LGC-VI UC, BULK (101582755)							
3	TUNED LIGHT TRINIDAD	TUNED LIGHT (TM) SYSTEM (452984)	140	sacks	10.	2.24	7.93		7.93
7.93 Gal		FRESH WATER							
4	DISPLACEMENT		26.8	bbl	8.33	.0	.0	.0	
Calculated Values		Pressures		Volumes					
Displacement	46.5 / 26.8	Shut In: Instant	250	Lost Returns	Yes	Cement Slurry	110	Pad	
Top Of Cement	Surface	5 Min		Cement Returns	13 bbls	Actual Displacement		Treatment	
Frac Gradient		15 Min		Spacers		Load and Breakdown		Total Job	
Rates									
Circulating		Mixing		Displacement		Avg. Job			
Cement Left In Pipe	Amount	0 ft	Reason	Shoe Joint					
Frac Ring # 1 @	ID	Frac ring # 2 @	ID	Frac Ring # 3 @	ID	Frac Ring # 4 @	ID		
The Information Stated Herein Is Correct				Customer Representative Signature					

*The Road to Excellence Starts with Safety*

Sold To #: 353810	Ship To #: 2856687	Quote #:	Sales Order #: 8208122
Customer: XTO ENERGY INC EBUSINESS		Customer Rep: Coffee, Ron	
Well Name: Hill Ranch	Well #: 02-16	API/UWI #:	
Field:	City (SAP): TRINIDAD	County/Parish: Las Animas	State: Colorado
Legal Description:			
Lat:		Long:	
Contractor: ??		Rig/Platform Name/Num: ??	
Job Purpose: Cement Multiple Stages			Ticket Amount:
Well Type: Development Well		Job Type: Cement Multiple Stages	
Sales Person: FLING, MATTHEW		Srvs Supervisor: WHEELER, JUSTIN	MBU ID Emp #: 196470

Activity Description	Date/Time	Cht #	Rate bbl/ min	Volume bbl		Pressure psig		Comments
				Stage	Total	Tubing	Casing	
Depart from Service Center or Other Site	05/31/2011 08:30							
Arrive At Loc	05/31/2011 10:30							
Safety Meeting - Pre Rig-Up	05/31/2011 12:00							
Test Lines	05/31/2011 13:26						4630.0	
Pump Spacer	05/31/2011 13:27		3	58			.0	Pump Fresh Water, Casing Capacity, + 10 bbls
Pump Spacer	05/31/2011 13:45		3	20			.0	Pump Gelled Water
Pump Cement	05/31/2011 13:51		3	53.9			.0	Mix and Pump 135 sks Tuned Light B2 Cement @ 10 lb/gal
Shutdown	05/31/2011 14:06							
Clean Lines	05/31/2011 14:07							
Drop Plug	05/31/2011 14:08							
Pump Displacement - Start	05/31/2011 14:09		3	0			.0	Pump Fresh Water Displacement
Pump Displacement - End	05/31/2011 14:24		3	46.5			.0	
Bump Plug	05/31/2011 14:25			46.5			693.0	
Check Floats	05/31/2011 14:26							Floats Holding
Drop Opening Device For Multiple Stage Cementer	05/31/2011 14:27							Drop Bomb, Wait 5 Minutes
Open Multiple Stage Cementer	05/31/2011 14:34						3004.0	

Sold To # : 353810

Ship To # : 2856687

Quote # :

Sales Order # :

8208122

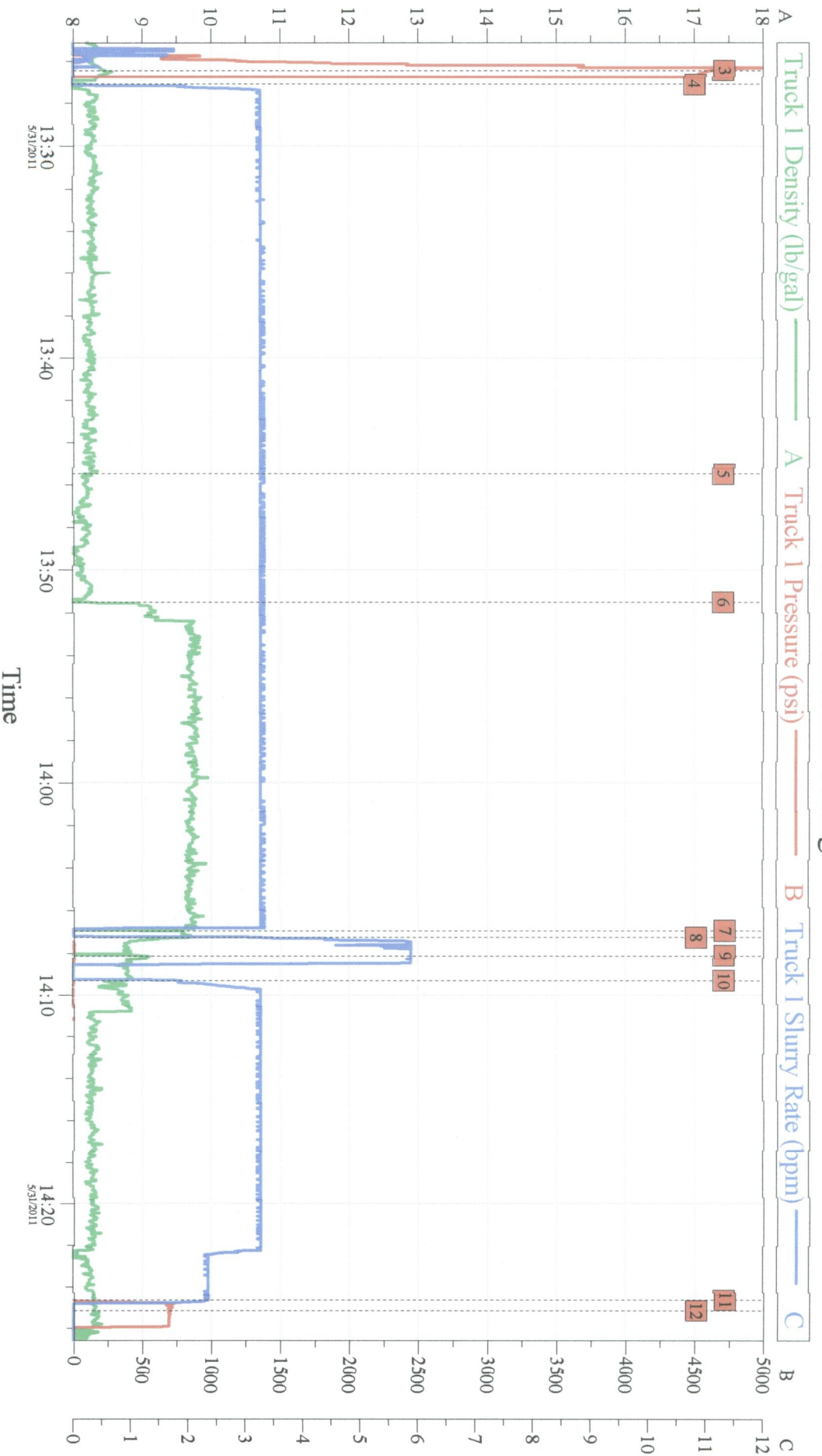
SUMMIT Version: 7.20.130

Tuesday, May 31, 2011 03:37:00



Activity Description	Date/Time	Cht #	Rate bbl/min	Volume bbl		Pressure psig		Comments
				Stage	Total	Tubing	Casing	
Pump Spacer	05/31/2011 14:34		1	10			.0	Pump Fresh Water
Pump Spacer	05/31/2011 14:40		1	20			.0	Pump Gelled Water
Pump Cement	05/31/2011 14:54		5	55.9			8.0	Mix and Pump 140 sks Tuned Light B2 Cement @ 10 lb/gal
Shutdown	05/31/2011 15:08							
Drop Plug	05/31/2011 15:09							Drop Closing Plug
Pump Displacement - Start	05/31/2011 15:09		5	0			15.0	Pump Fresh Water Displacement
Pump Displacement - End	05/31/2011 15:19		2	26.8			250.0	13 bbls Cement to Surface
Close Multiple Stage Cementer	05/31/2011 15:20						1930. 0	Had returns at 41 bbls into cement. 13 bbls CMT to the pit
Safety Meeting - Pre Rig- Down	05/31/2011 15:25							
Safety Meeting - Departing Location	05/31/2011 16:30							

# XTO - Hill Ranch 02-16 5 1/2" Production Casing

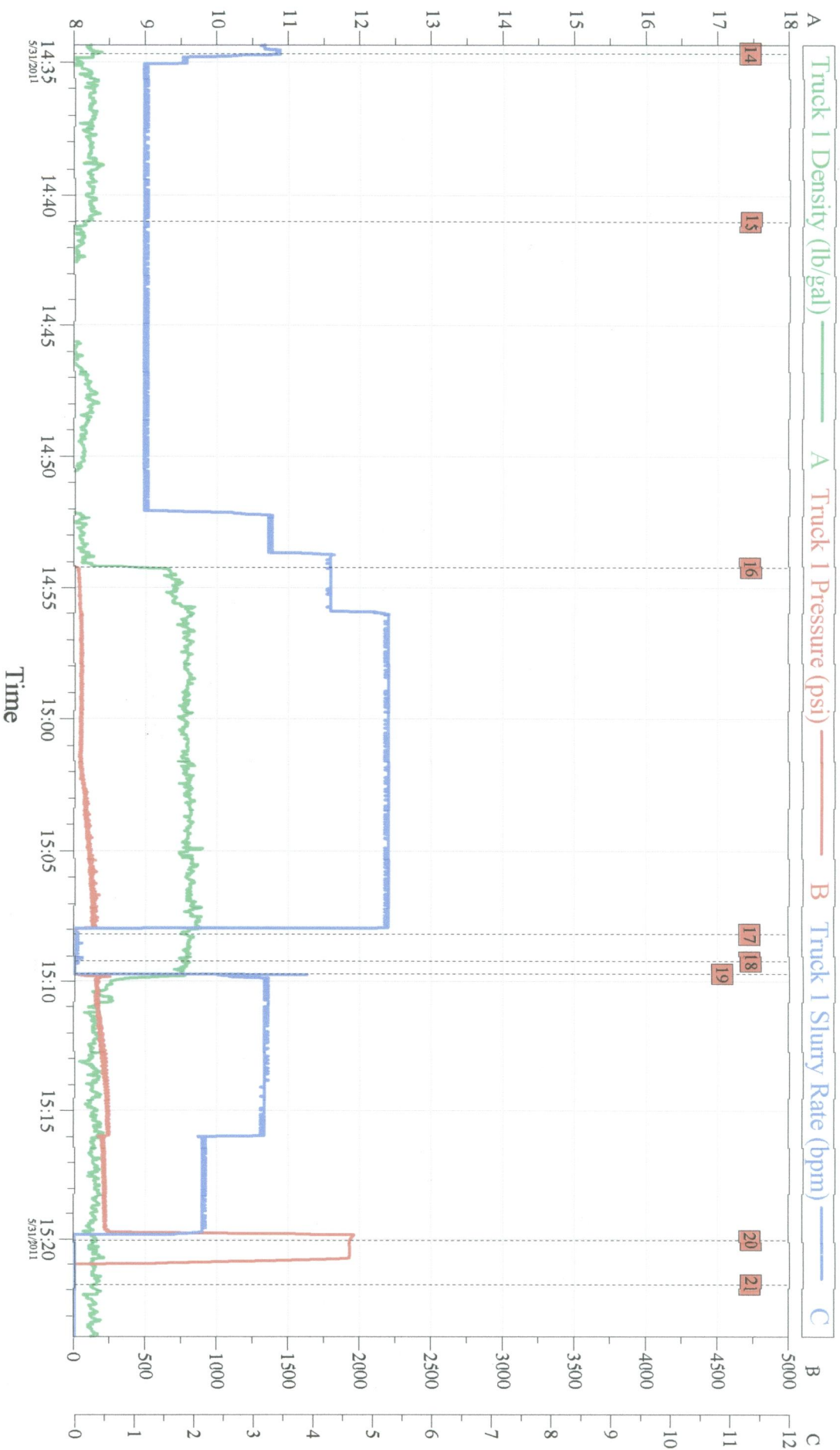


Customer: XTO  
Well Description: Hill Ranch 02-16

Job Date: 31-May-2011  
UWI:

Sales Order #: 8208122

# XTO - Hill Ranch 02-16 5 1/2" Production Casing 2nd Stage



## Global Event Log

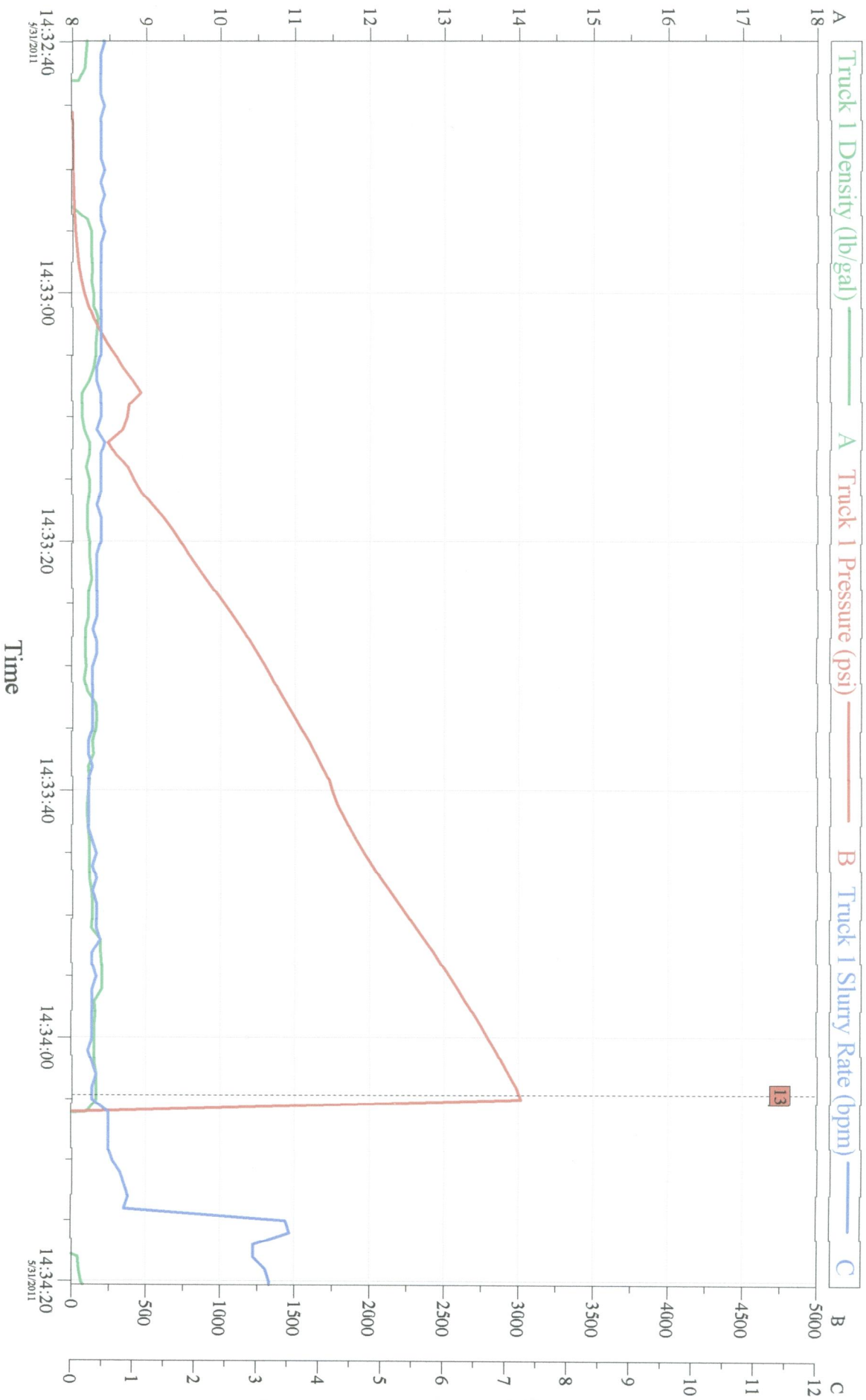
14	Fresh Water Spacer	14:34:41	15	Gel Water Spacer	14:40:59	16	10.0 ppg Tuned Light B2	14:54:14
17	Shutdown	15:08:10	18	Drop Top Plug	15:09:12	19	Fresh Water Displacement	15:09:42
20	Close Multiple Stage Cementer	15:20:03	21	End Job	15:21:47			

Customer: XTO  
Well Description: Hill Ranch 02-16

Job Date: 31-May-2011  
UWI:

Sales Order #: 8208122

# XTO - Hill Ranch 02-16 Open MSC



Customer: XTO  
Well Description: Hill Ranch 02-16

Job Date: 31-May-2011  
UWI:

Sales Order #: 8208122