

The Road to Excellence Starts with Safety

Sold To #: 353810	Ship To #: 2856687	Quote #:	Sales Order #: 8207377
Customer: XTO ENERGY INC EBUSINESS		Customer Rep: Coffee, Ron	
Well Name: Hill Ranch		Well #: 02-16	API/UWI #:
Field:	City (SAP): TRINIDAD	County/Parish: Las Animas	State: Colorado
Contractor: Pense Drilling		Rig/Platform Name/Num: 19	
Job Purpose: Cement Conductor Casing			
Well Type: Development Well		Job Type: Cement Conductor Casing	
Sales Person: FLING, MATTHEW	Srvc Supervisor: WHEELER, JUSTIN		MBU ID Emp #: 196470

Job Personnel

HES Emp Name	Exp Hrs	Emp #	HES Emp Name	Exp Hrs	Emp #	HES Emp Name	Exp Hrs	Emp #
CHAVEZ, JEROME Christophe	2.5	458298	GIBBS, JASON Edwin	2.5	300487	PAUMEN, CORD Anthony	2.5	453759
WHEELER, JUSTIN W	2.5	196470						

Equipment

HES Unit #	Distance-1 way	HES Unit #	Distance-1 way	HES Unit #	Distance-1 way	HES Unit #	Distance-1 way
10025030	42 mile	10824253C	42 mile	10948694	42 mile	11026160	42 mile
11338223	42 mile						

Job Hours

Date	On Location Hours	Operating Hours	Date	On Location Hours	Operating Hours	Date	On Location Hours	Operating Hours

TOTAL

Total is the sum of each column separately

Job				Job Times			
Formation Name				Date	Time	Time Zone	
Formation Depth (MD) Top		Bottom		Called Out	29 - May - 2011	12:30	MST
Form Type		BHST		On Location	29 - May - 2011	12:30	MST
Job depth MD	45. ft	Job Depth TVD	45. ft	Job Started	29 - May - 2011	12:45	MST
Water Depth		Wk Ht Above Floor	3. ft	Job Completed	29 - May - 2011	00:00	MST
Perforation Depth (MD) From		To		Departed Loc	29 - May - 2011	00:00	MST

Well Data

Description	New / Used	Max pressure psig	Size in	ID in	Weight lbm/ft	Thread	Grade	Top MD ft	Bottom MD ft	Top TVD ft	Bottom TVD ft
17 1/2" Openhole				11.					45.		
13 3/8" Conductor Casing	Unknown		13.375	12.715	48.				45.		

Tools and Accessories

Type	Size	Qty	Make	Depth	Type	Size	Qty	Make	Depth	Type	Size	Qty	Make
Guide Shoe					Packer					Top Plug			
Float Shoe					Bridge Plug					Bottom Plug			
Float Collar					Retainer					SSR plug set			
Insert Float										Plug Container			
Stage Tool										Centralizers			

Miscellaneous Materials

Gelling Agt		Conc		Surfactant		Conc		Acid Type		Qty		Conc	%
Treatment Fld		Conc		Inhibitor		Conc		Sand Type		Size		Qty	

Fluid Data

Stage/Plug #: 1													
Fluid #	Stage Type	Fluid Name			Qty	Qty uom	Mixing Density lbm/gal	Yield ft ³ /sk	Mix Fluid Gal/sk	Rate bbl/min	Total Mix Fluid Gal/sk		

Stage/Plug #: 1									
Fluid #	Stage Type	Fluid Name	Qty	Qty uom	Mixing Density lbm/gal	Yield ft ³ /sk	Mix Fluid Gal/sk	Rate bbl/min	Total Mix Fluid Gal/sk
1	FRESH WATER		30.00	bbl	8.33	.0	.0	.0	
2	LGC -VI Spacer		20.00	bbl	.	.0	.0	.0	
2 gal/bbl		LGC-VI UC, BULK (101582755)							
3	Trinidad Surface Blend	TRINIDAD SURFACE BLEND - SBM (137081)		sacks	13.5	1.61	6.64	4.0	6.64
0.125 lbm		POLY-E-FLAKE (101216940)							
2 %		CAL-SEAL 60, 50 LB BAG (101217146)							
2 %		ECONOLITE (100001580)							
5 lbm		GILSONITE, 50 LB BAG (100001618)							
0.2 %		VERSASET, 55 LB SK (101376573)							
6 %		SALT, 100 LB BAG (100003652)							
8.838 Gal		FRESH WATER							
4	DISPLACEMENT		5.00	bbl	8.33	.0	.0	.0	
Calculated Values		Pressures		Volumes					
Displacement		Shut In: Instant		Lost Returns		Cement Slurry		Pad	
Top Of Cement		5 Min		Cement Returns		Actual Displacement		Treatment	
Frac Gradient		15 Min		Spacers		Load and Breakdown		Total Job	
Rates									
Circulating		Mixing		Displacement		Avg. Job			
Cement Left In Pipe	Amount	0 ft	Reason	Shoe Joint					
Frac Ring # 1 @	ID	Frac ring # 2 @	ID	Frac Ring # 3 @	ID	Frac Ring # 4 @	ID		
The Information Stated Herein Is Correct				Customer Representative Signature					

The Road to Excellence Starts with Safety

Sold To #: 353810		Ship To #: 2856687		Quote #:		Sales Order #: 8207377	
Customer: XTO ENERGY INC EBUSINESS				Customer Rep: Coffee, Ron			
Well Name: Hill Ranch			Well #: 02-16		API/UWI #:		
Field:		City (SAP): TRINIDAD		County/Parish: Las Animas		State: Colorado	
Legal Description:							
Lat:				Long:			
Contractor: Pense Drilling			Rig/Platform Name/Num: 19				
Job Purpose: Cement Conductor Casing					Ticket Amount:		
Well Type: Development Well			Job Type: Cement Conductor Casing				
Sales Person: FLING, MATTHEW			Srcv Supervisor: WHEELER, JUSTIN			MBU ID Emp #: 196470	

Activity Description	Date/Time	Cht #	Rate bbl/ min	Volume bbl		Pressure psig		Comments
				Stage	Total	Tubing	Casing	
Arrive at Location from Other Job or Site	05/29/2011 12:30							
Assessment Of Location Safety Meeting	05/29/2011 12:33							
Safety Meeting - Pre Rig-Up	05/29/2011 12:35							
Test Lines	05/29/2011 12:41							
Pump Spacer	05/29/2011 12:44		2	30			14.0	Pump H2O spacer did not return to surface. Raised rate to 5 bbl/min to catch circulation.
Pump Spacer	05/29/2011 12:55		5	20			98.0	Mixed and pumped gel and polyflake spacer.
Pump Cement	05/29/2011 13:02		4	17			94.0	Mix and Pump 13.5#/gal cement mixed with H2O supplied by rig
Shutdown	05/29/2011 13:06						.0	Shutdown with cement back to surface. Wait 5 min to see how far it will fall back.
Pump Cement	05/29/2011 13:12		2	3			8.0	Mix and Pump 13.5#/gal cement mixed with H2O supplied by rig
Shutdown	05/29/2011 13:13						.0	Shutdown with cement back to surface. Wait 5 min to see how far it will fall back.
Pump Cement	05/29/2011 13:19		2	4			-4.0	Mix and Pump 13.5#/gal cement mixed with H2O supplied by rig
Pump Displacement - End	05/29/2011 13:22		1	5			-9.0	Pump H2O displacement

Sold To #: 353810

Ship To #: 2856687

Quote #:

Sales Order #:

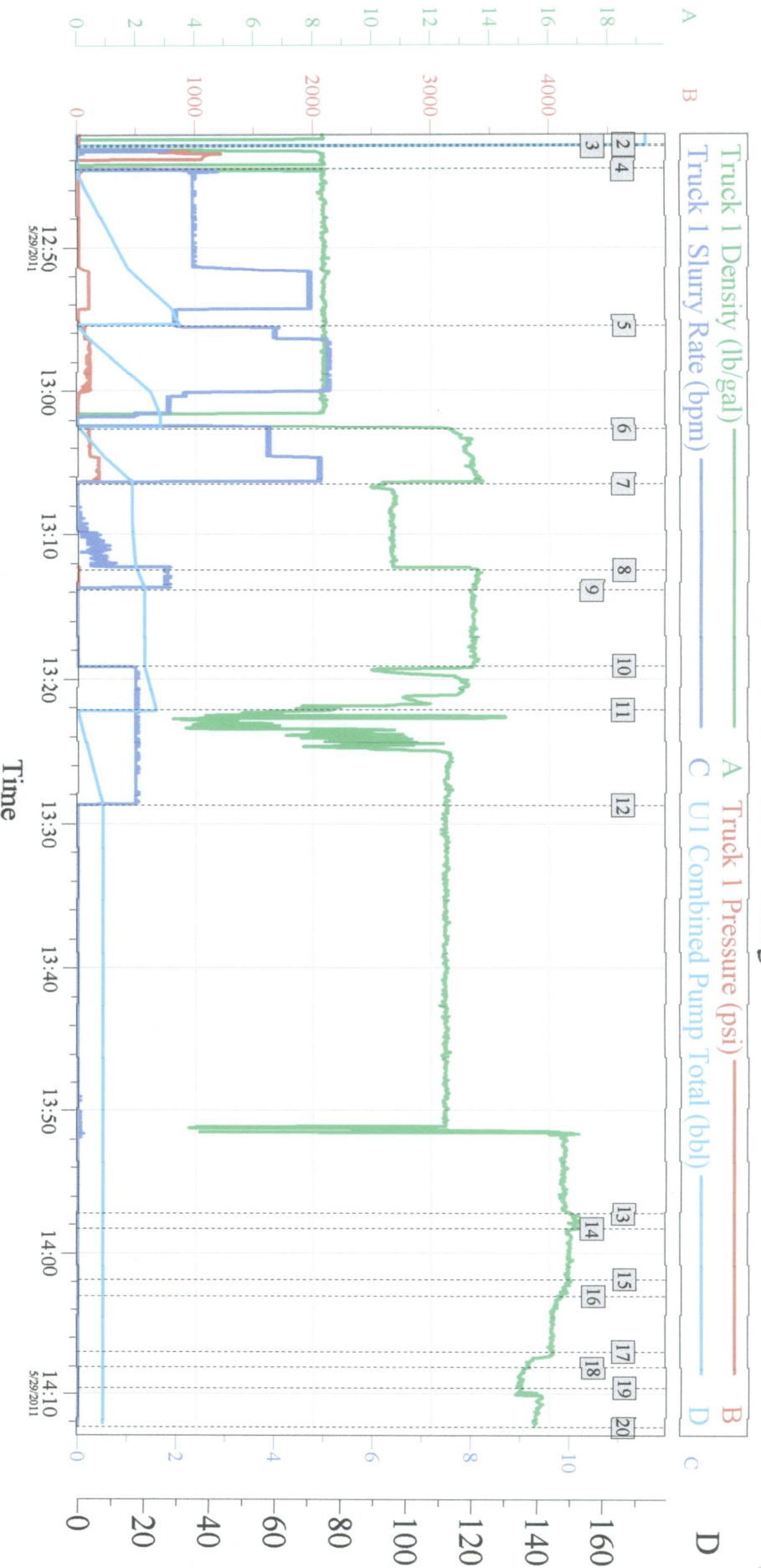
8207377

SUMMIT Version: 7.20.130

Sundav. May 29. 2011 02:16:00

Activity Description	Date/Time	Cht #	Rate bbl/min	Volume bbl		Pressure psig		Comments
				Stage	Total	Tubing	Casing	
Shutdown	05/29/2011 13:28						.0	Shutdown with cement back to surface. Wait 30 min to see how far it will fall back.
Pump Cement	05/29/2011 13:57		0.5	2			.0	Mix and Pump 13.5#/gal cement mixed with H2O supplied by rig
Shutdown	05/29/2011 13:58						.0	Shutdown with cement back to surface. Wait 5 min to see how far it will fall back.
Pump Cement	05/29/2011 14:01		0.5	2			.0	Mix and Pump 13.5#/gal cement mixed with H2O supplied by rig.
Shutdown	05/29/2011 14:03						.0	Shutdown with cement back to surface. Wait 5 min to see how far it will fall back.
Pump Cement	05/29/2011 14:06		0.5	1			.0	Mix and Pump 13.5#/gal cement mixed with H2O supplied by rig
End Job	05/29/2011 14:09							

XTO - Hill Ranch 02-16 13 3/8" Conductor Casing



Customer: XTO
Well Description: Hill Ranch 02-16

Job Date: 29-May-2011
UWI:

Sales Order #: 8207377