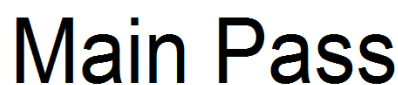




<<< Fold Here >>>
All interpretations are opinions based on inferences from electrical or other measurements and we cannot and do not guarantee the accuracy or correctness of any interpretation, and we shall not, except in the case of gross or willful negligence on our part, be liable or responsible for any loss, costs, damages, or expenses incurred or sustained by anyone resulting from any interpretation made by any of our officers, agents or employees. These interpretations are also subject to our general terms and conditions set out in our current Price Schedule.
Comments
<p>Directions: Hill Ranch, Gallegos Canyon, follow road to Y go right up hill, next Y go left, 2nd right to location.</p>

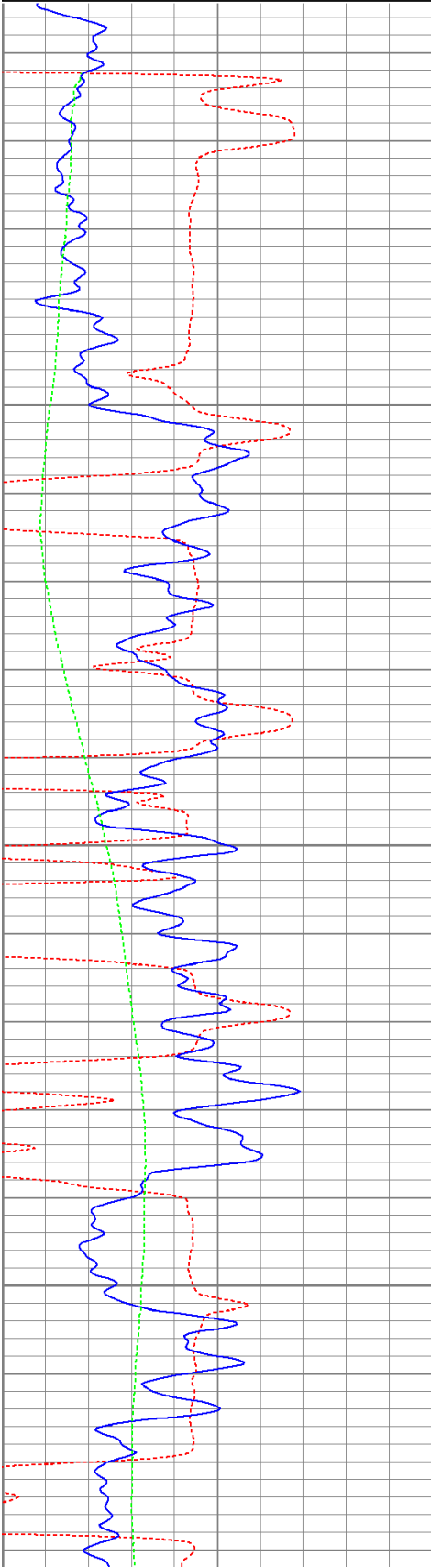


Database File: hr02-166711b.db
Dataset Pathname: pass2
Presentation Format: cbldig
Dataset Creation: Tue Jun 07 14:53:57 2011 by Log Open-Cased 110302
Charted by: Depth in Feet scaled 1:240

400	Travel Time (usec)	200
0	GR (GAPI)	200
0	DEVI (°)	10

0	Amplitude (mV)	100
9	Collar Locator	-1

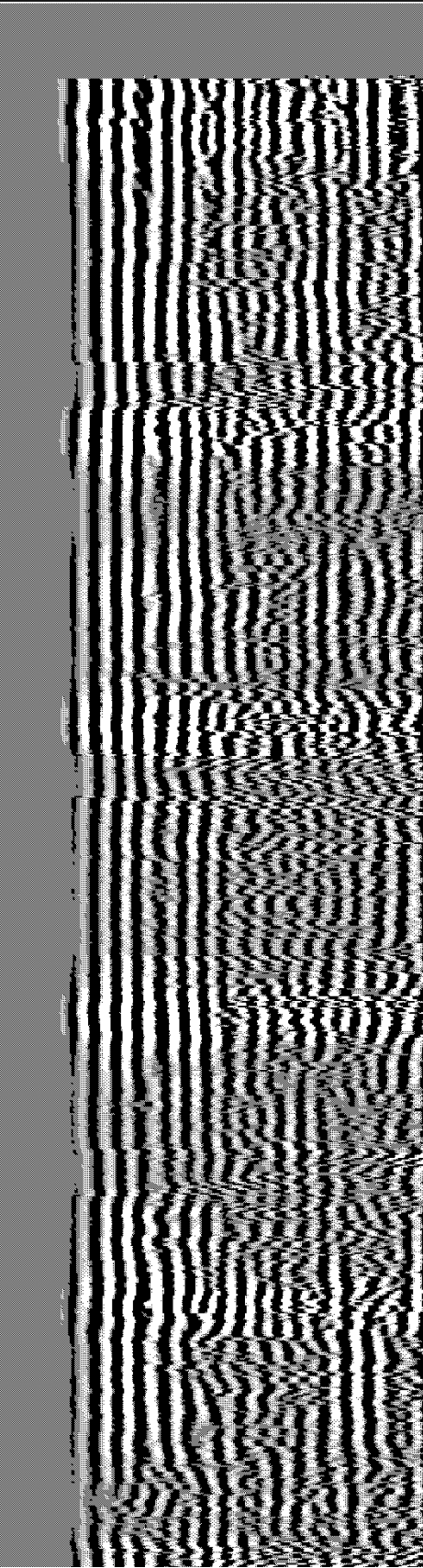
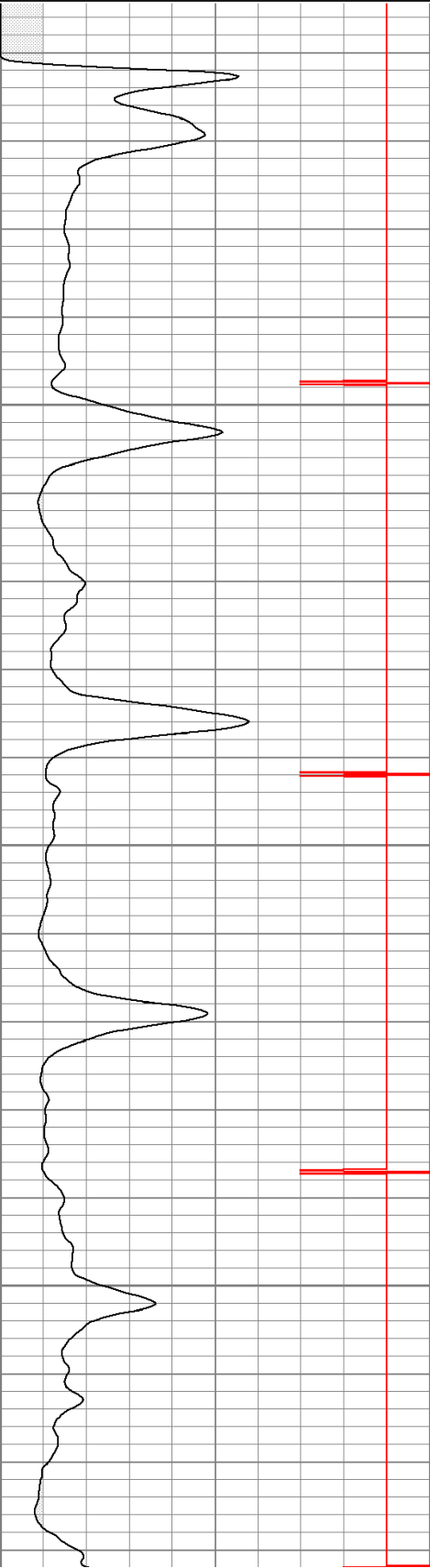
200 Variable Density 1200

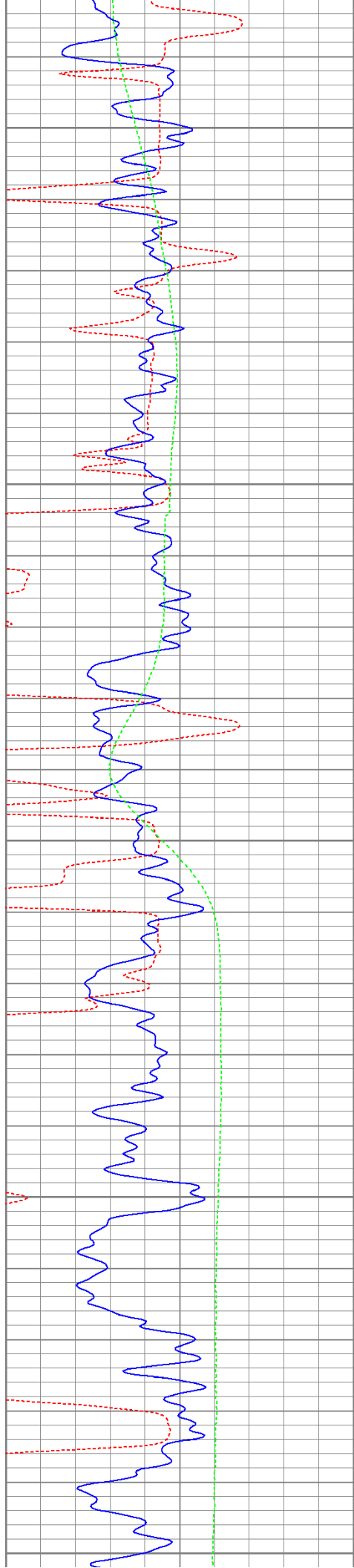


50

100

150





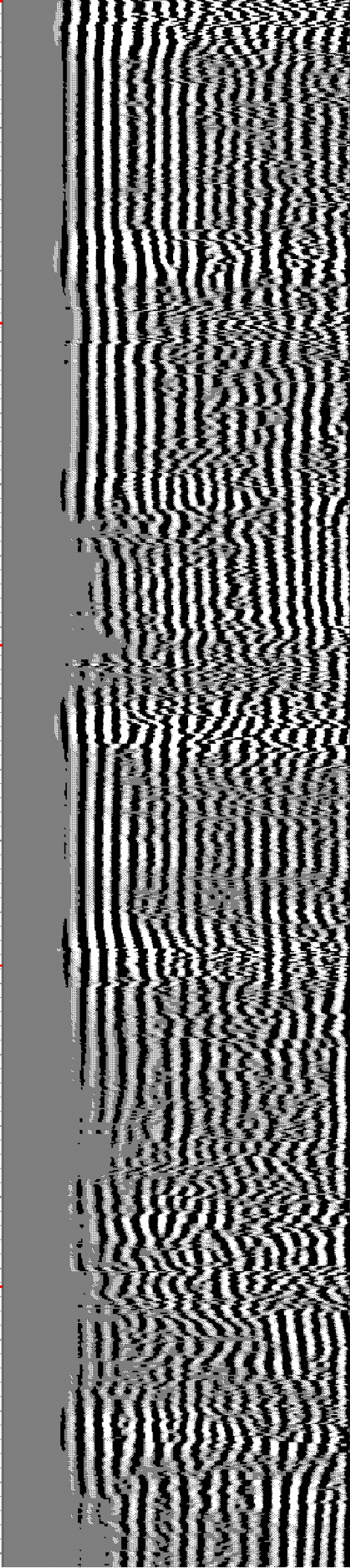
200

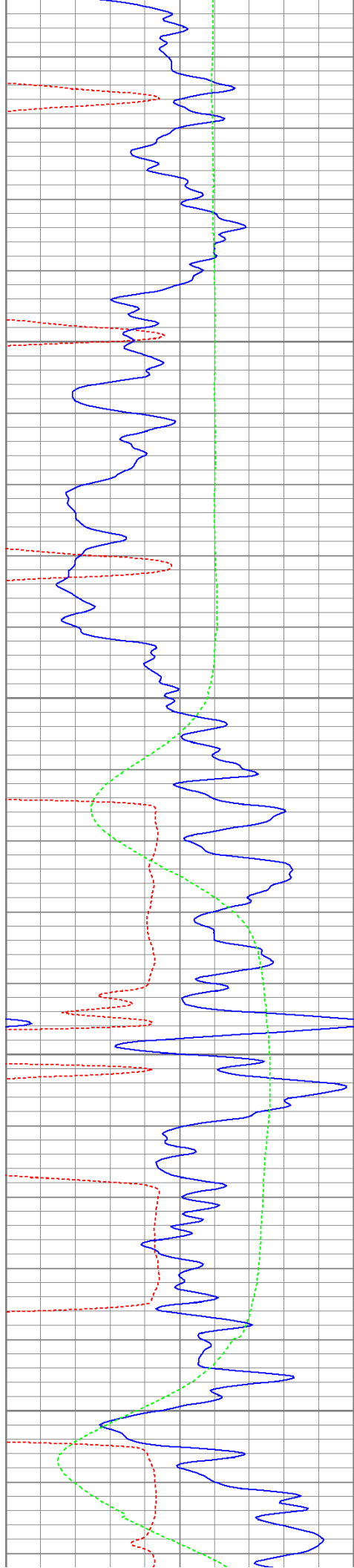
250

300

350

400



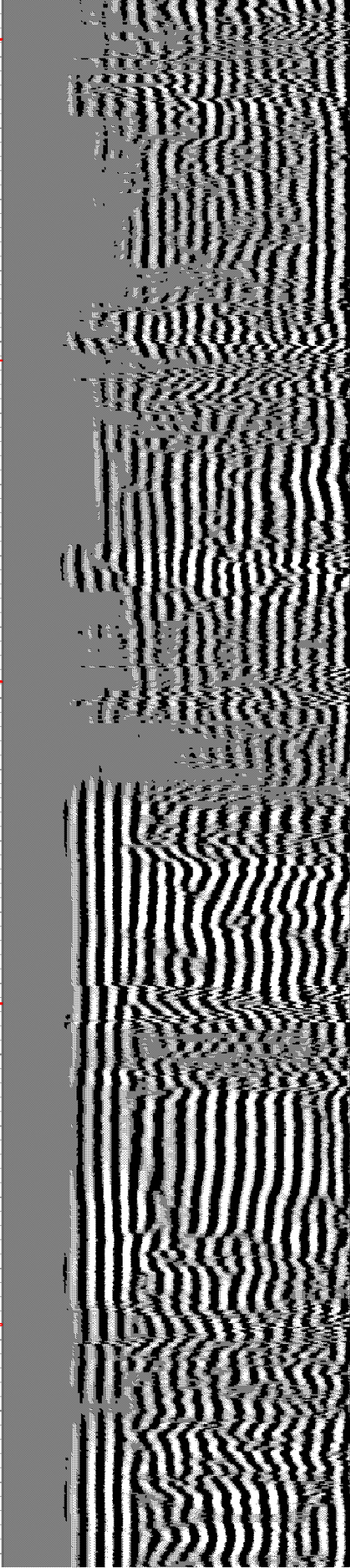
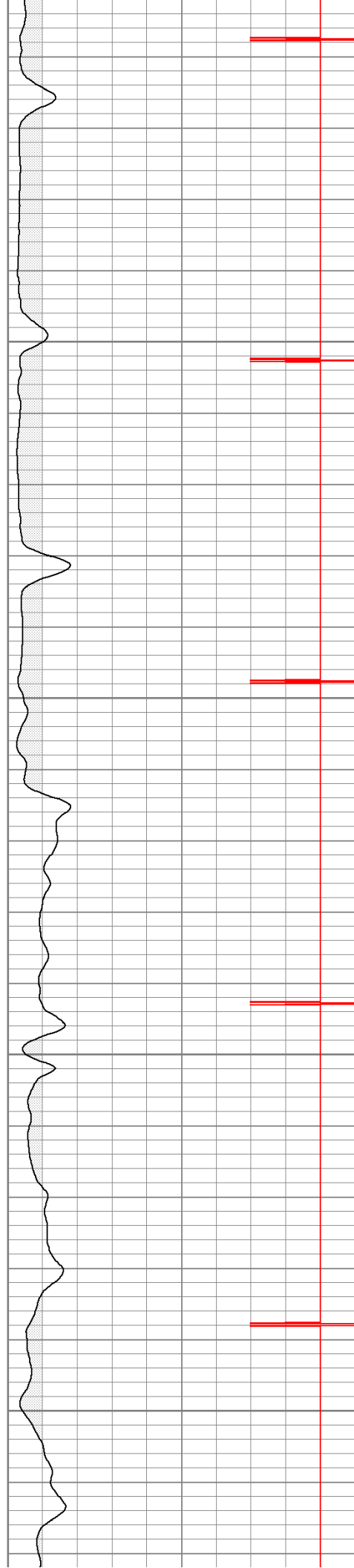


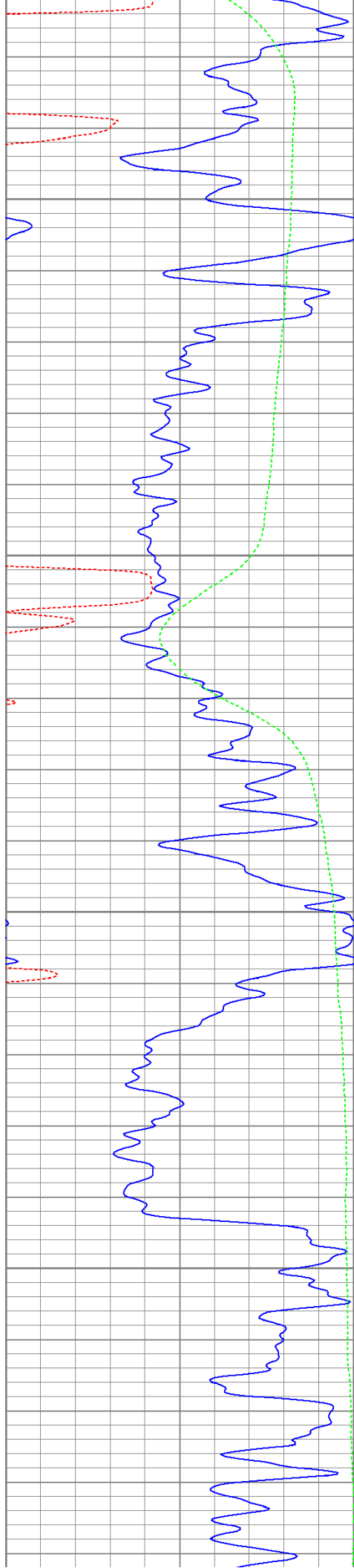
450

500

550

600



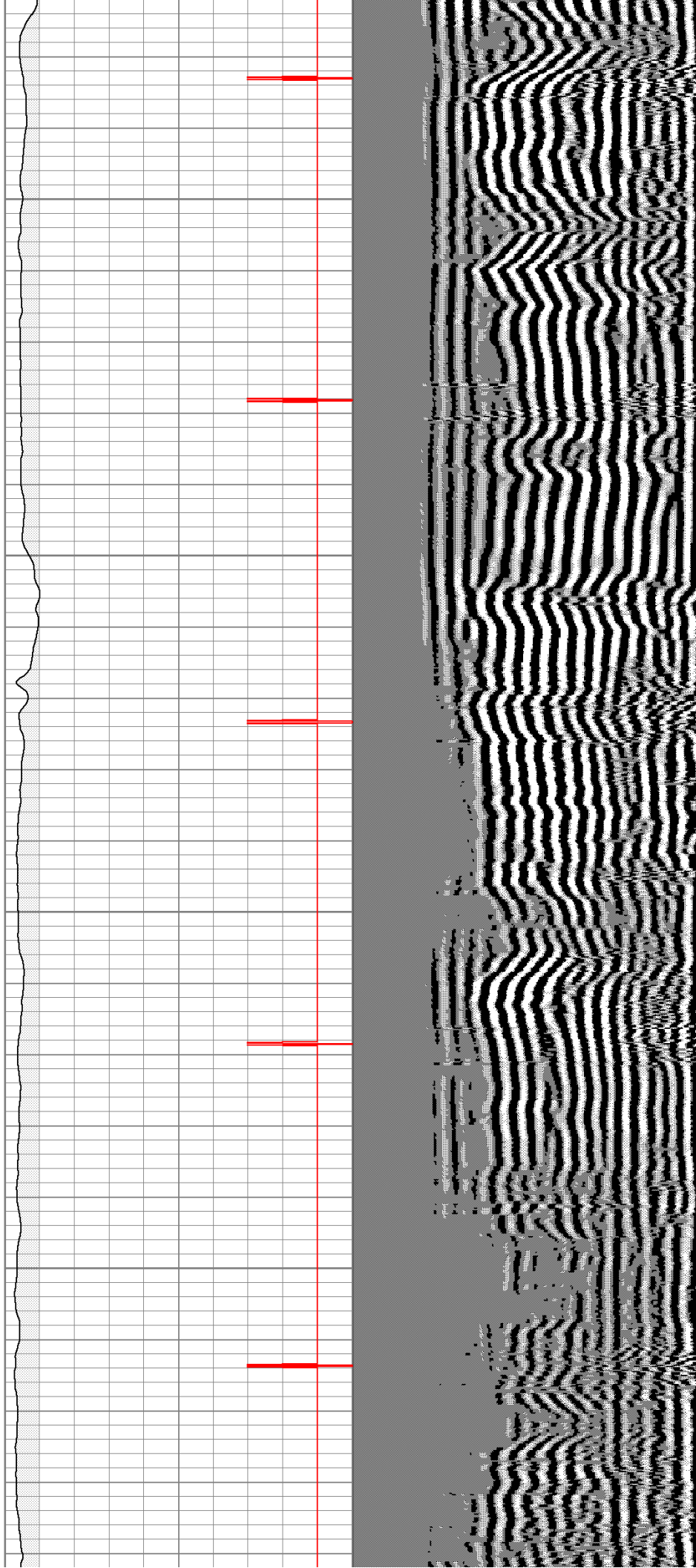


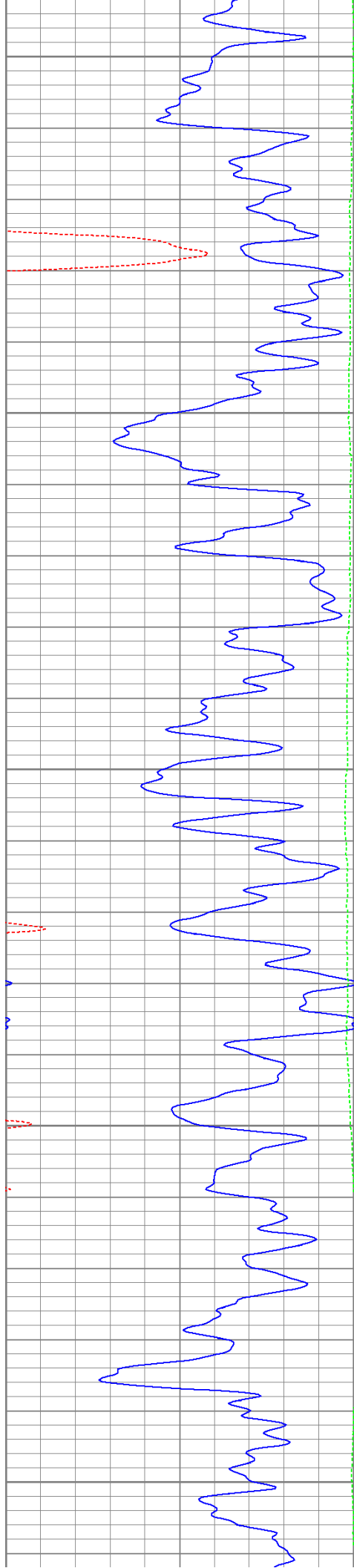
650

700

750

800





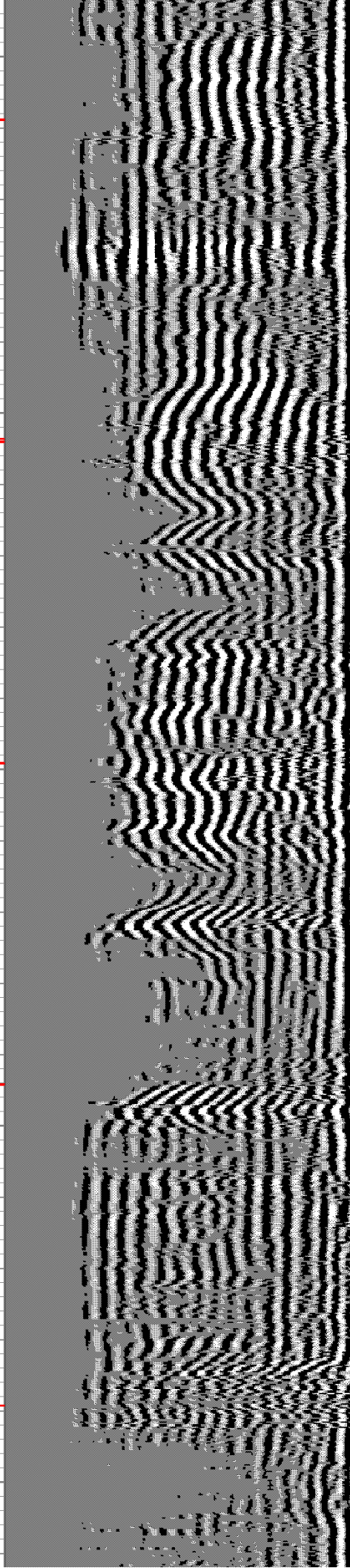
850

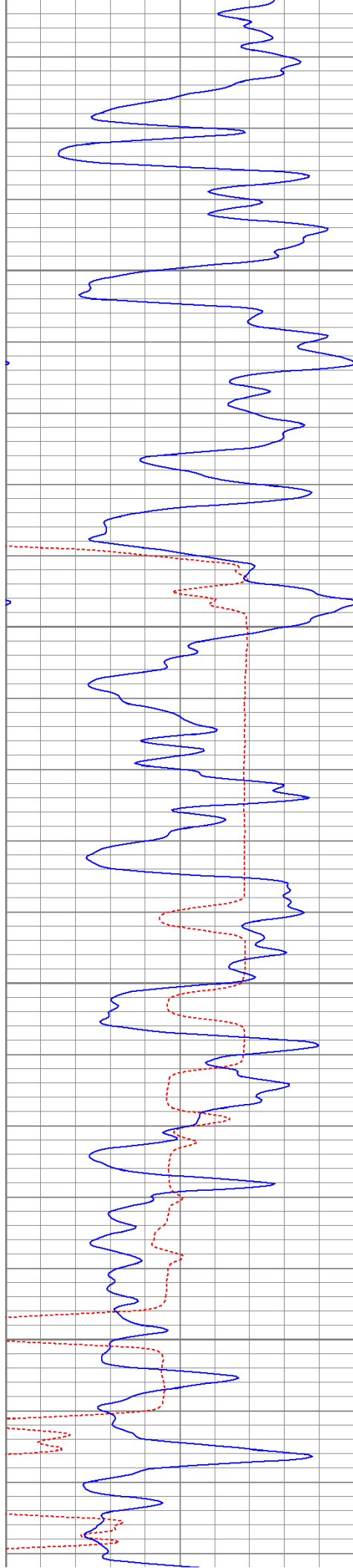
900

950

1000

1050





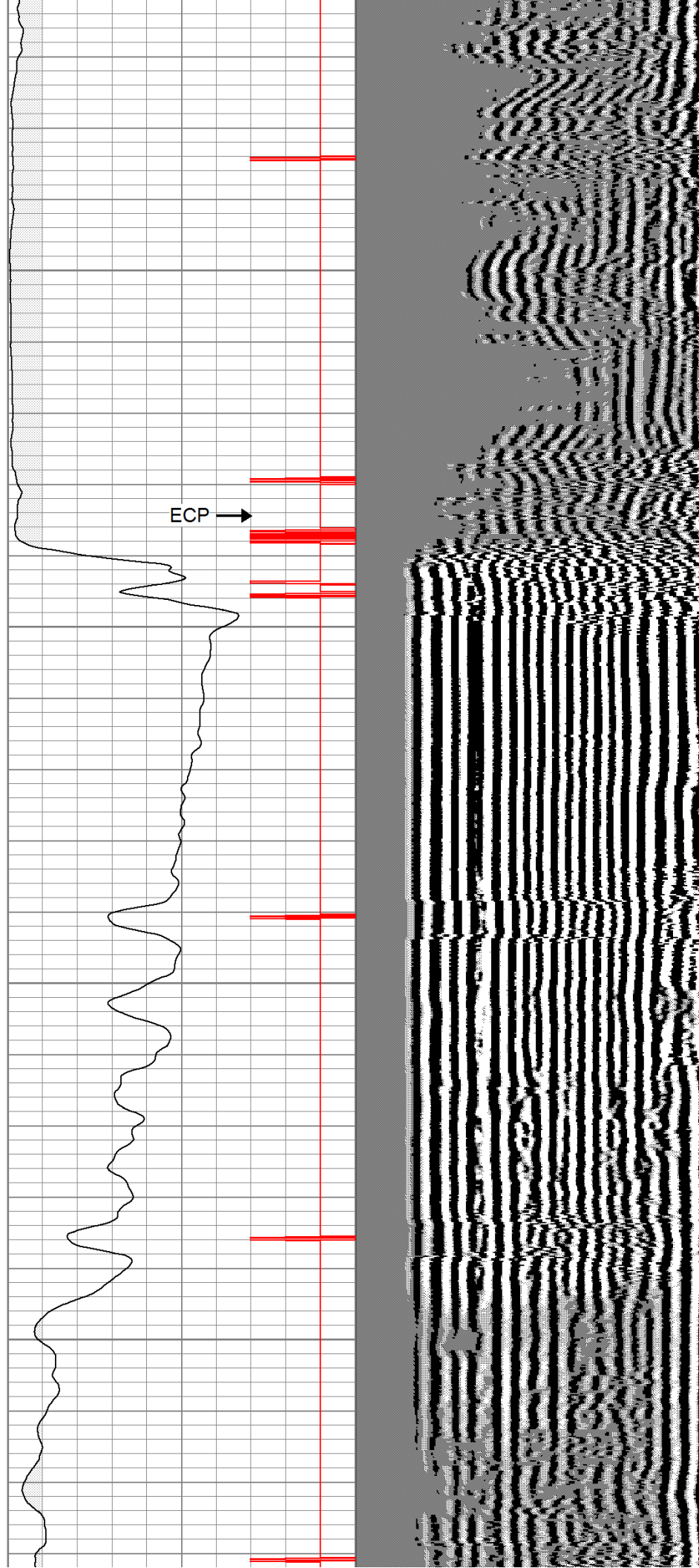
1100

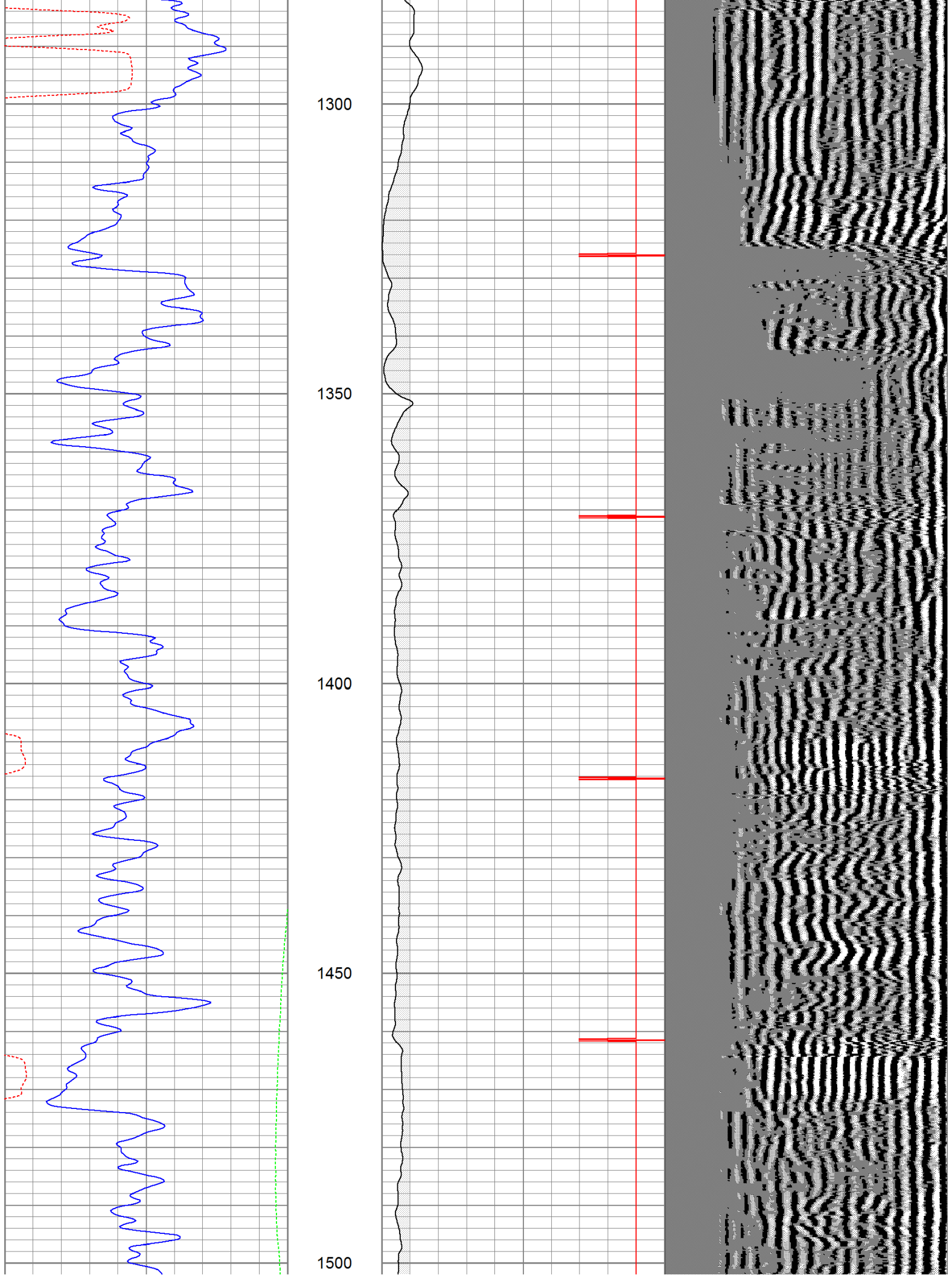
1150

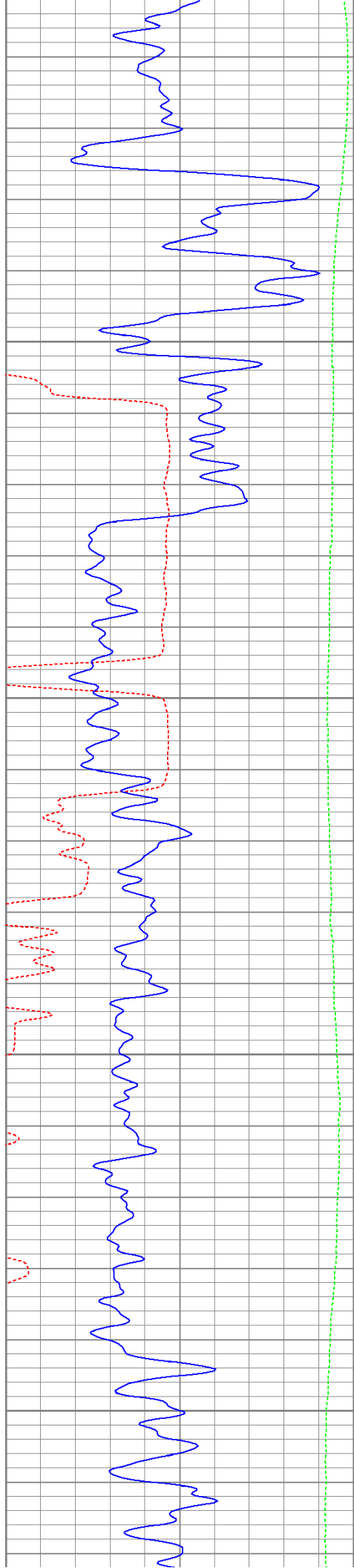
1200

1250

ECP →





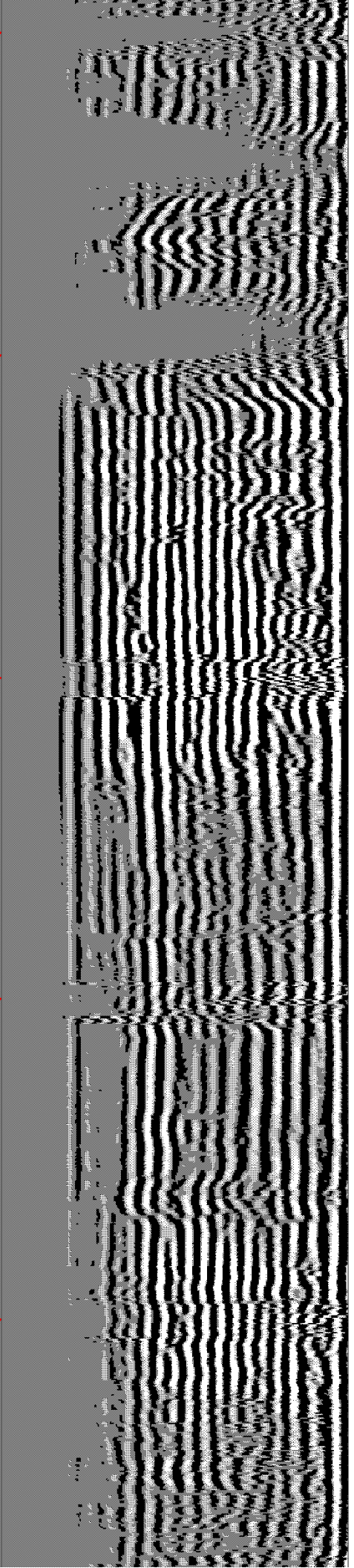
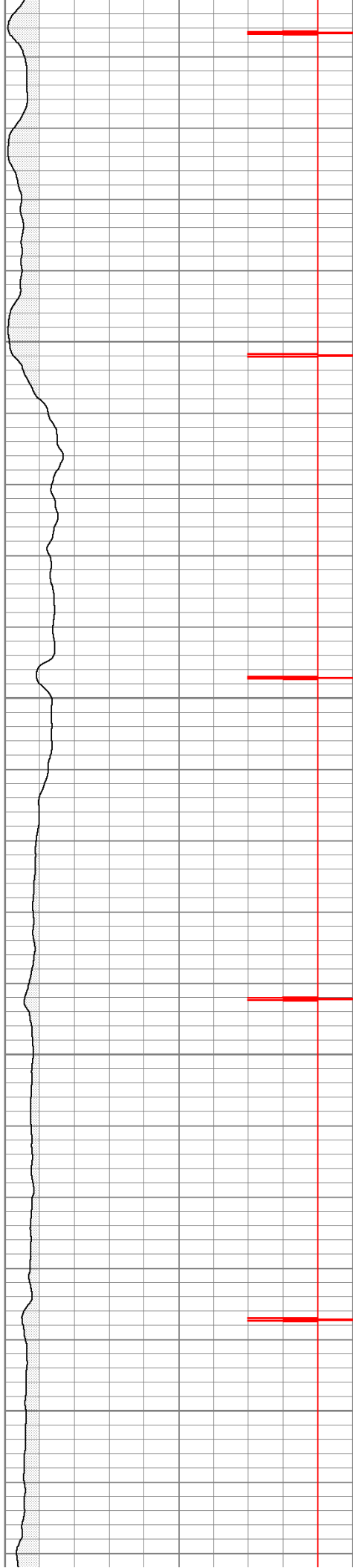


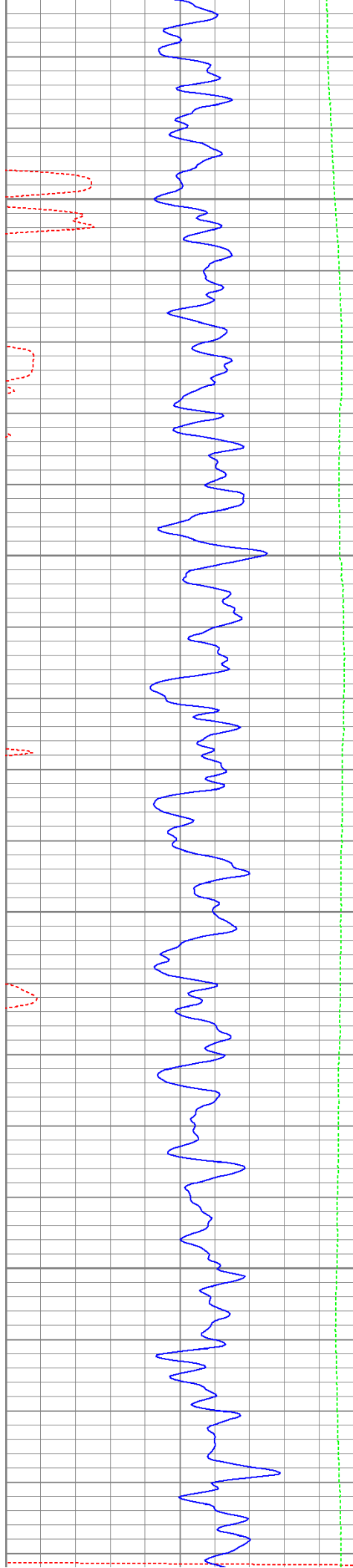
1550

1600

1650

1700





1750

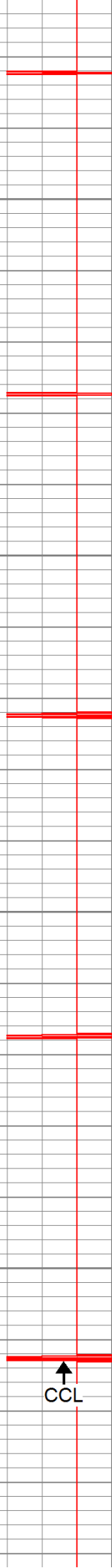
1800

1850

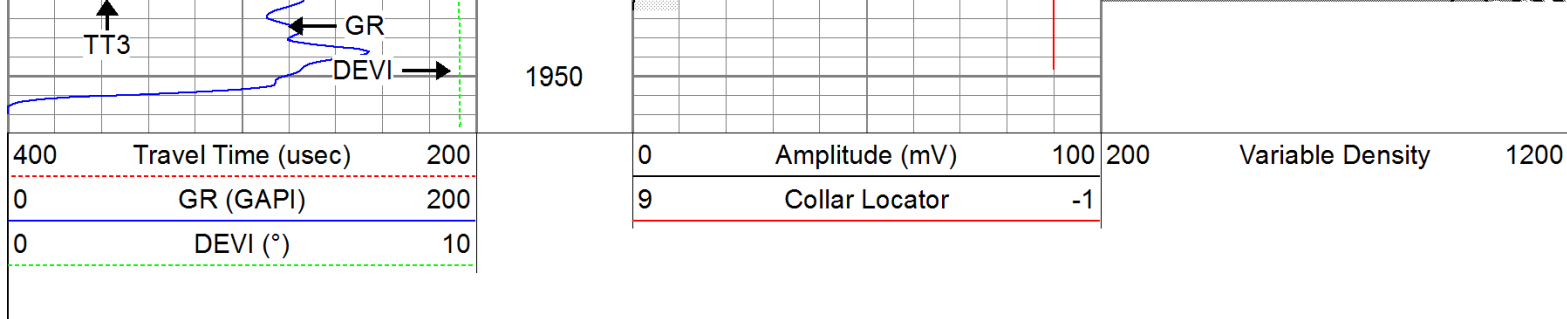
1900



AMP3

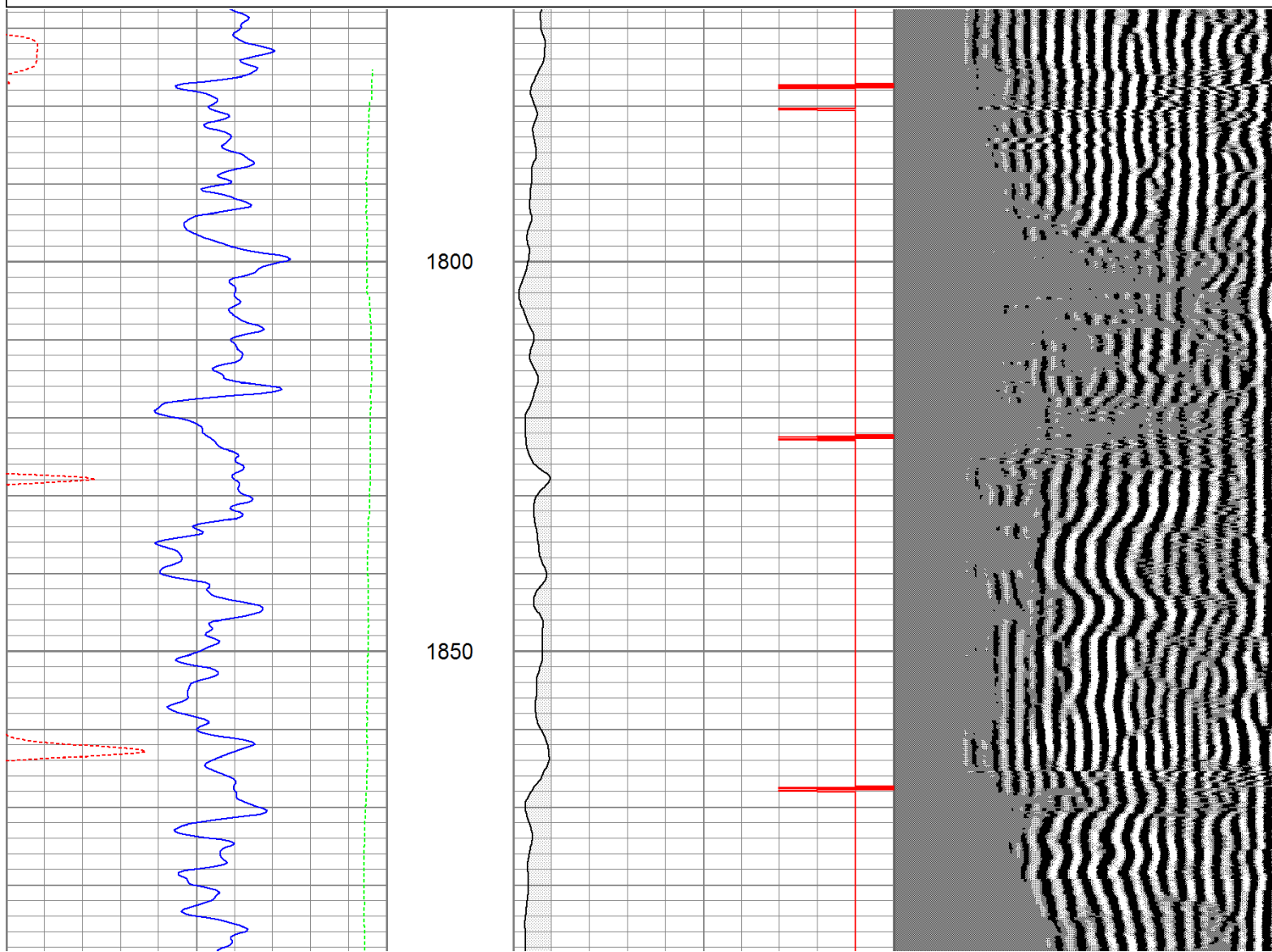
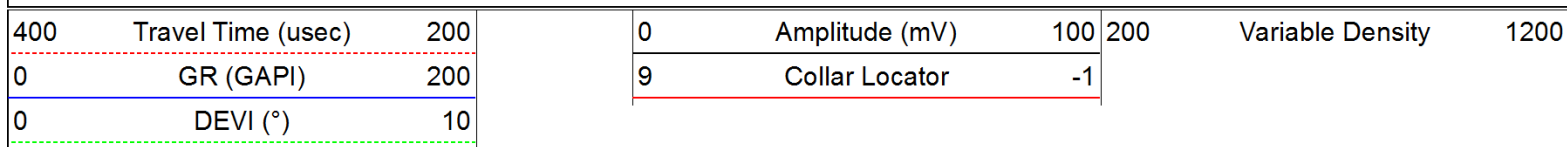


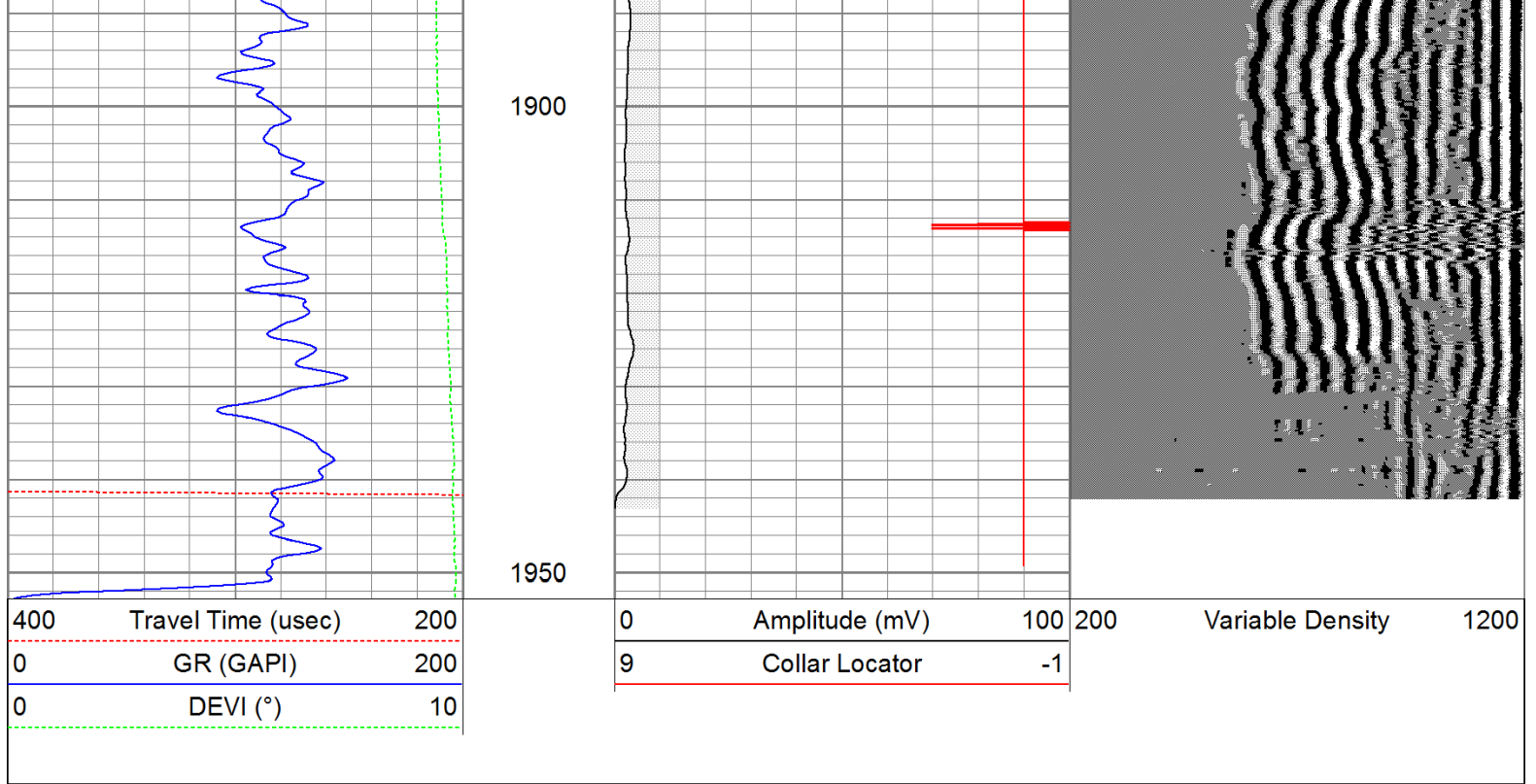
CCL



Repeat Section

Database File: hr02-166711b.db
 Dataset Pathname: pass1
 Presentation Format: cbldig
 Dataset Creation: Tue Jun 07 14:48:39 2011 by Log Open-Cased 110302
 Charted by: Depth in Feet scaled 1:240





Calibration Report					
Database File:	hr02-166711b.db				
Dataset Pathname:	pass1				
Dataset Creation:	Tue Jun 07 14:48:39 2011 by Log Open-Cased 110302				
Gamma Ray Calibration Report					
Serial Number:	080616				
Tool Model:	275D_INC				
Performed:	Wed May 04 17:31:09 2011				
Calibrator Value:	200.0	GAPI			
Background Reading:	50.0	cps			
Calibrator Reading:	250.0	cps			
Sensitivity:	1.0000	GAPI/cps			
Inclinometer Calibration Report					
Performed:	Wed May 04 17:39:54 2011				
	Low Read.	High Read.	Low Ref.	High Ref.	
X Accelerometer	-3585.20	3595.40	-1.00	1.00	gee
Y Accelerometer	-3619.40	3520.00	-1.00	1.00	gee
Z Accelerometer					
Cement Bond Log Calibration Report					
Serial Number:	081024				
Tool Model:	PROBEDIGITALCBL				
Performed:	Thu Jun 02 14:11:23 2011				
Depth:	45.379	ft			
Casing Diameter:	5.5	in			

