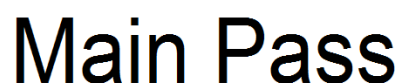


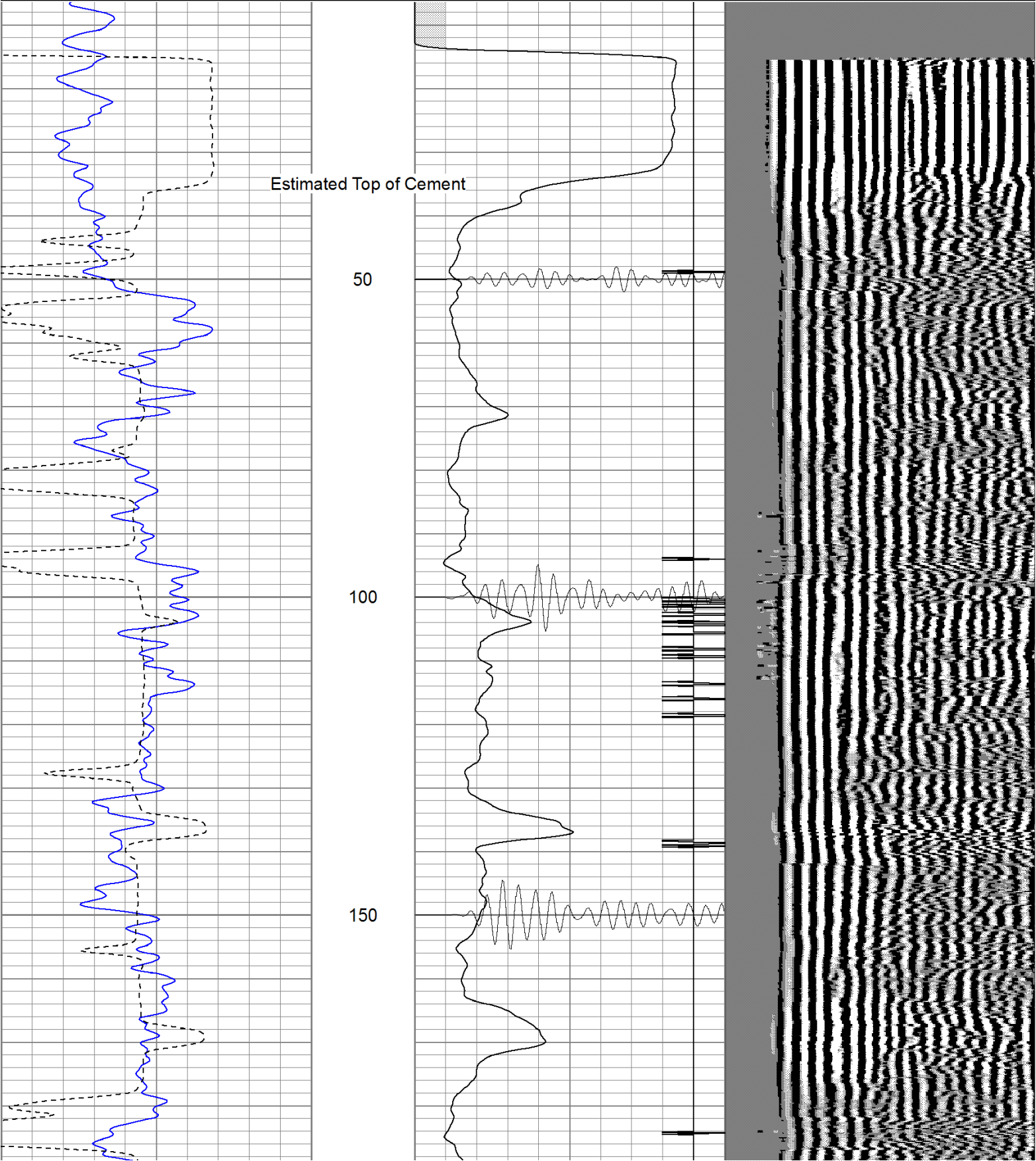


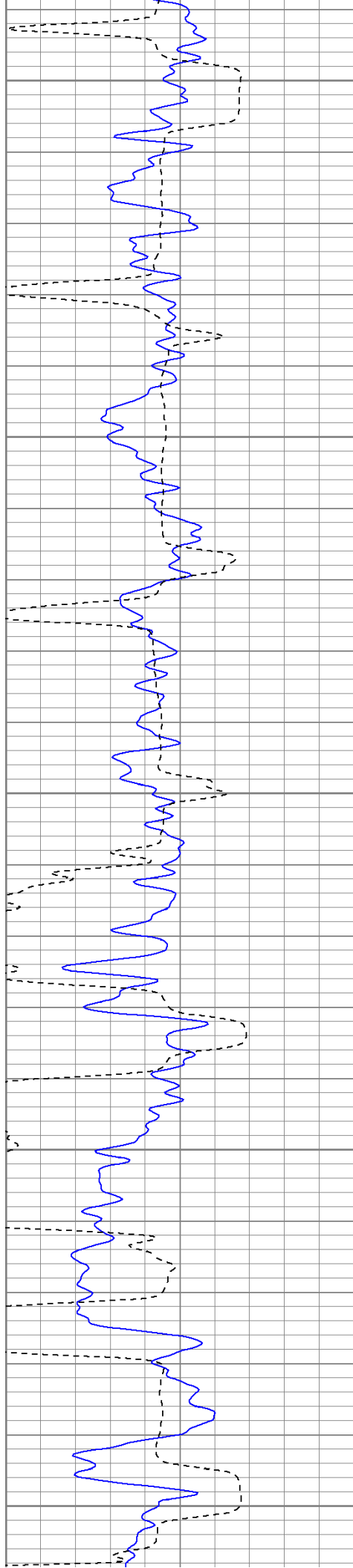
<<< Fold Here >>>
All interpretations are opinions based on inferences from electrical or other measurements and we cannot and do not guarantee the accuracy or correctness of any interpretation, and we shall not, except in the case of gross or willful negligence on our part, be liable or responsible for any loss, costs, damages, or expenses incurred or sustained by anyone resulting from any interpretation made by any of our officers, agents or employees. These interpretations are also subject to our general terms and conditions set out in our current Price Schedule.
Comments
Directions: Hill Ranch, Gallegos Canyon, follow road to Y go right up hill, next Y go left, 1st right to location.



Database File: hr02-086411b.db
Dataset Pathname: pass2.1
Presentation Format: cblrt
Dataset Creation: Sat Jun 04 13:21:31 2011 by Calc Open-Cased 110302
Charted by: Depth in Feet scaled 1:240

0	GR (GAPI)	200	0	AMP3 (mV)	100	200	Variable Density	1200
400	TT3 (usec)	200	18	CCL	-2			
			200	CBL5	1200			





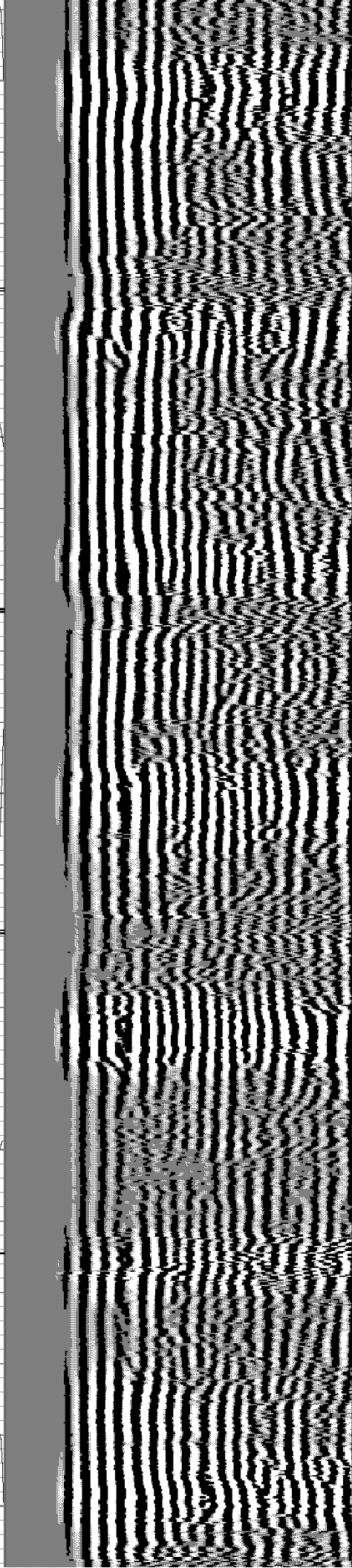
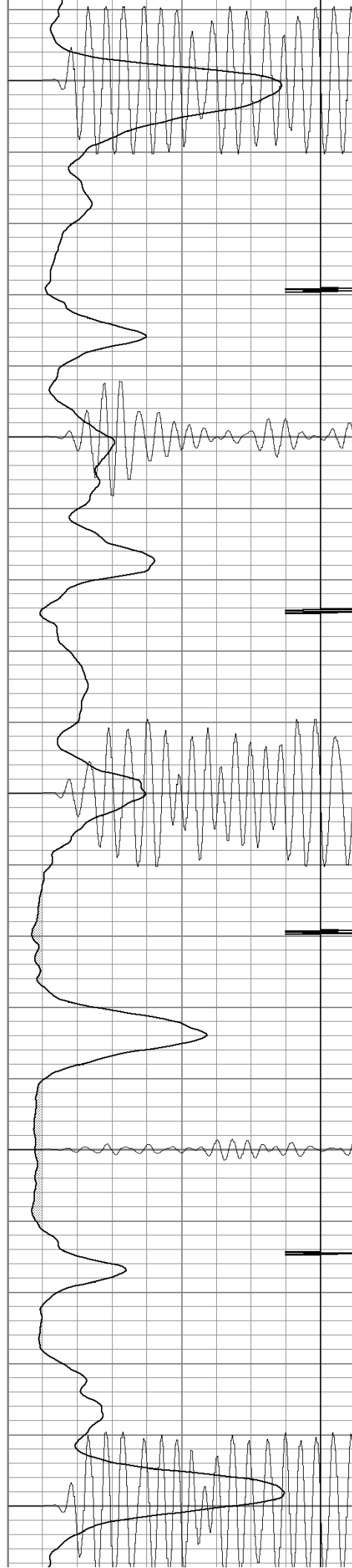
200

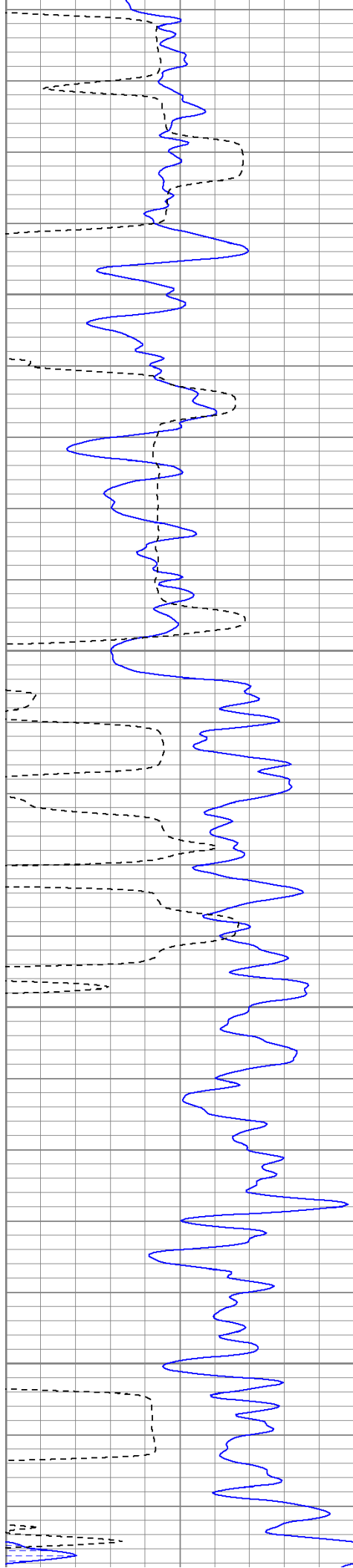
250

300

350

400



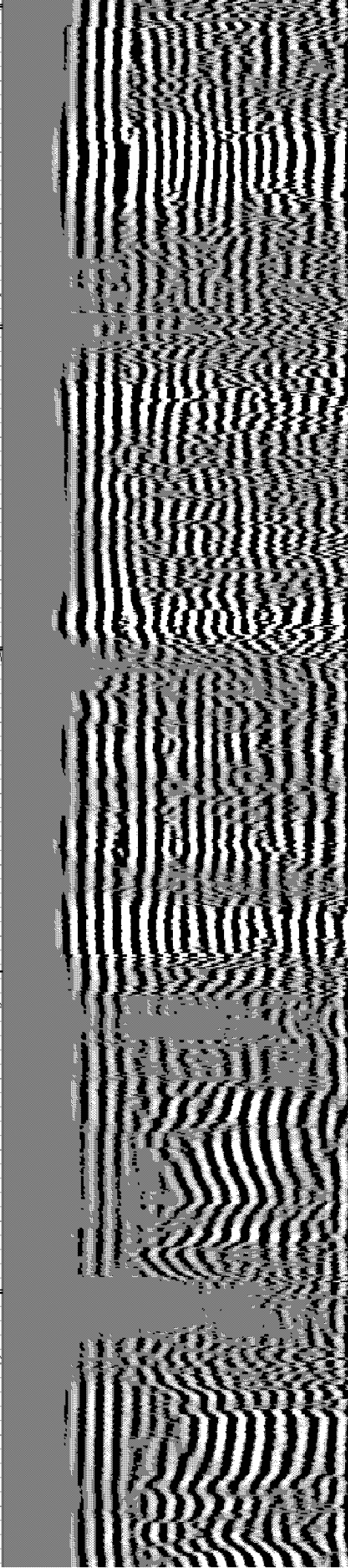
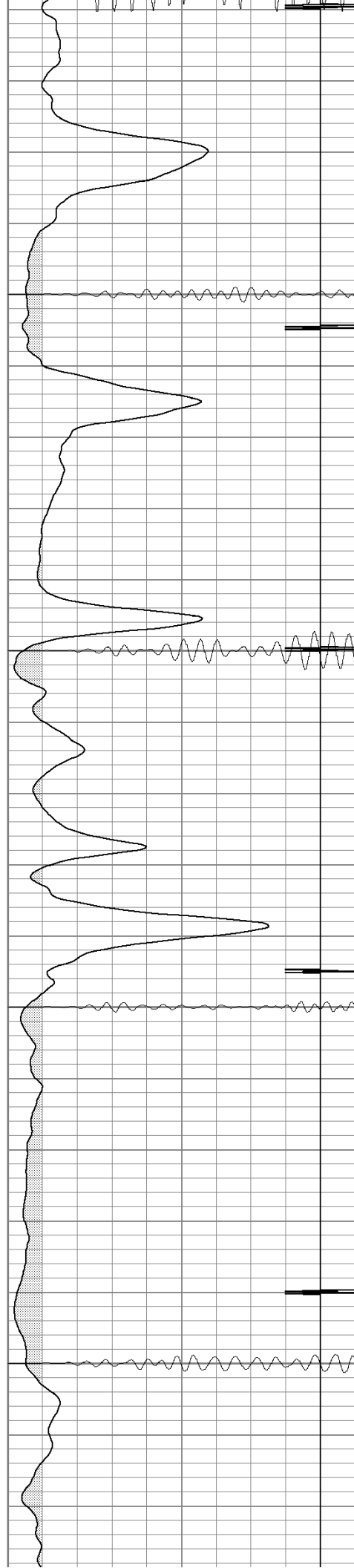


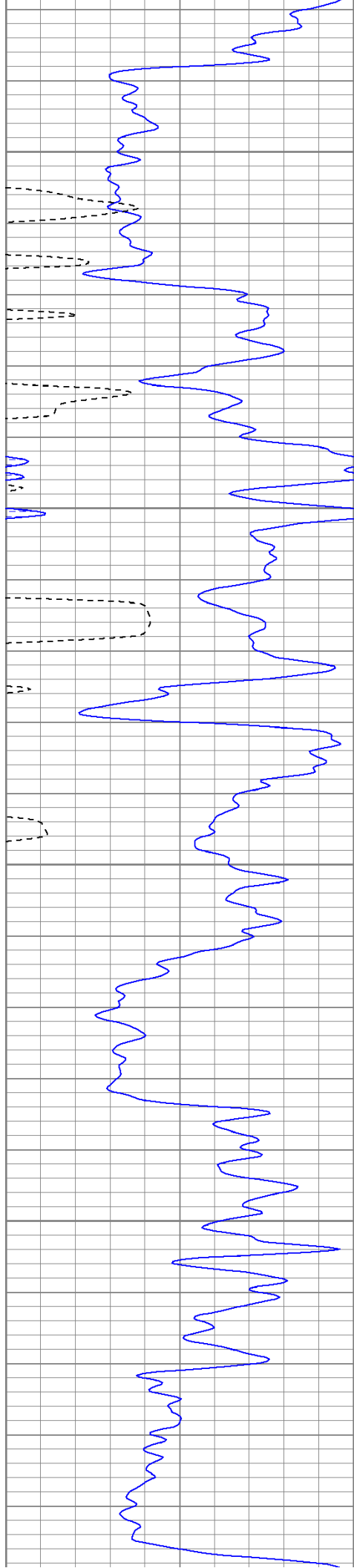
450

500

550

600



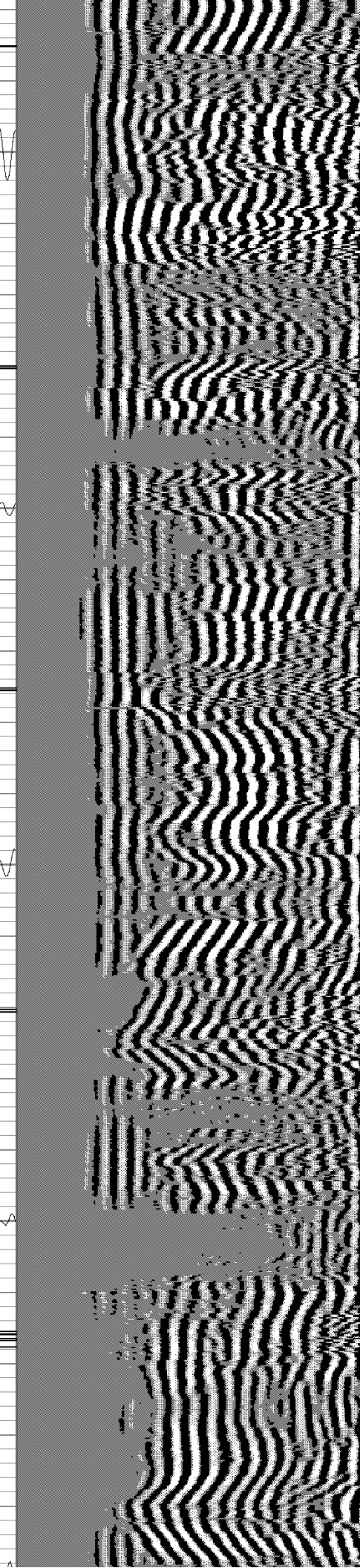
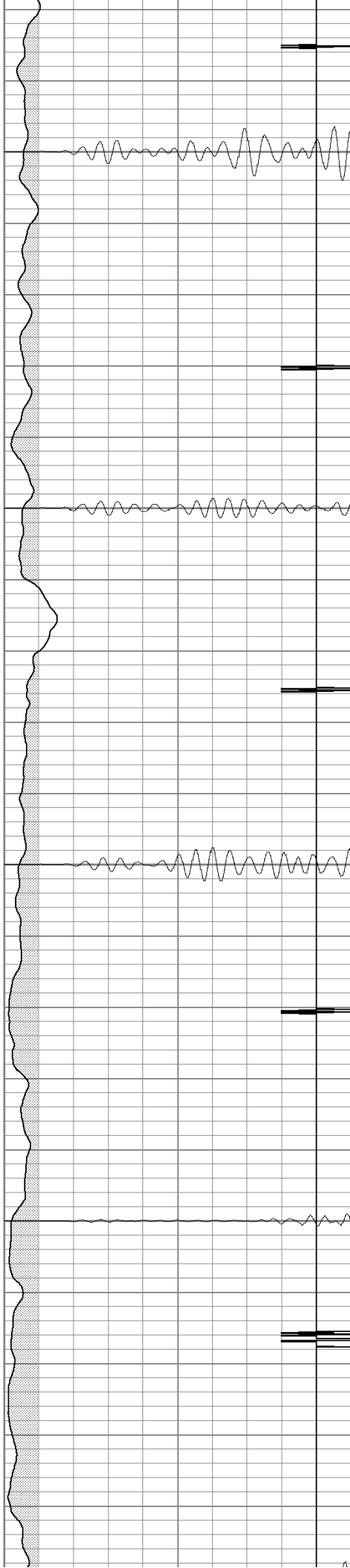


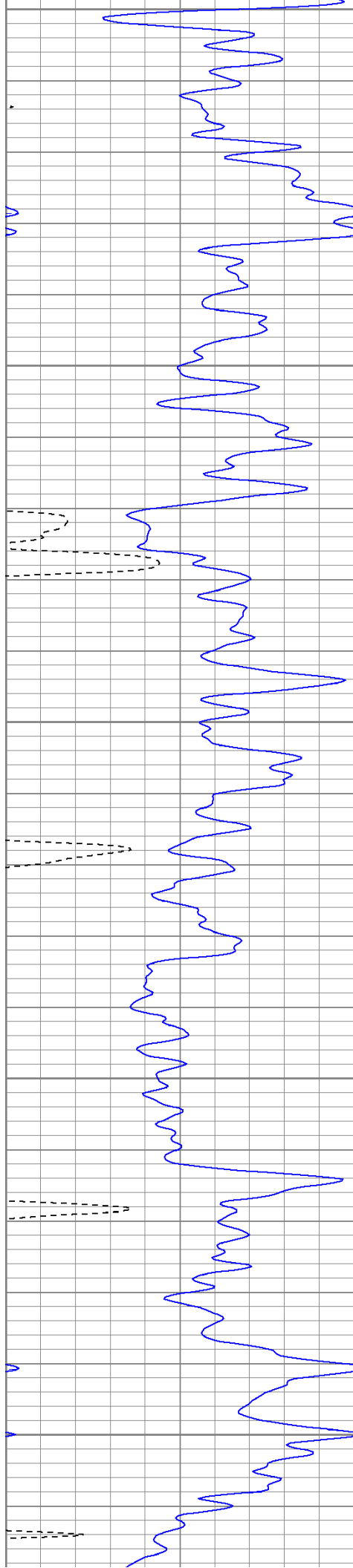
650

700

750

800





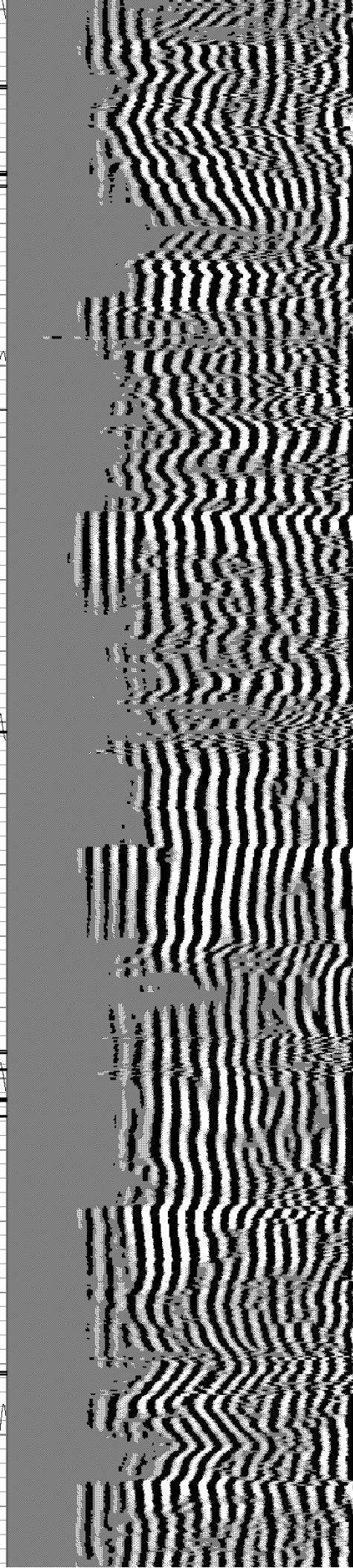
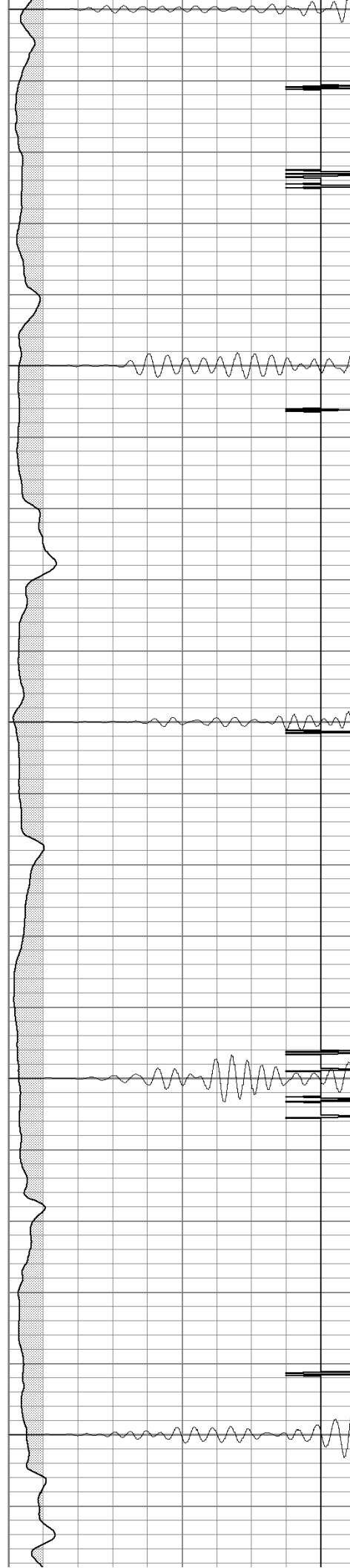
850

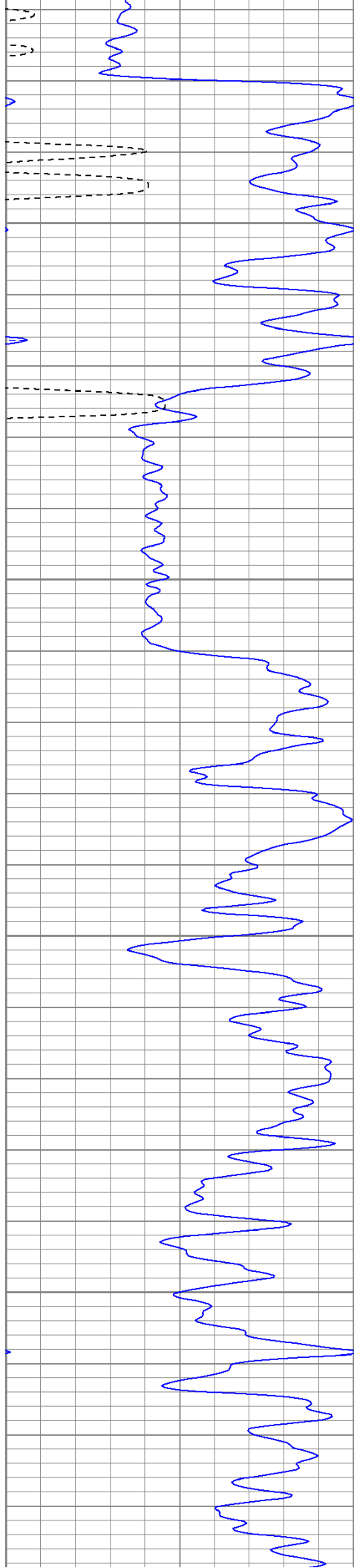
900

950

1000

1050



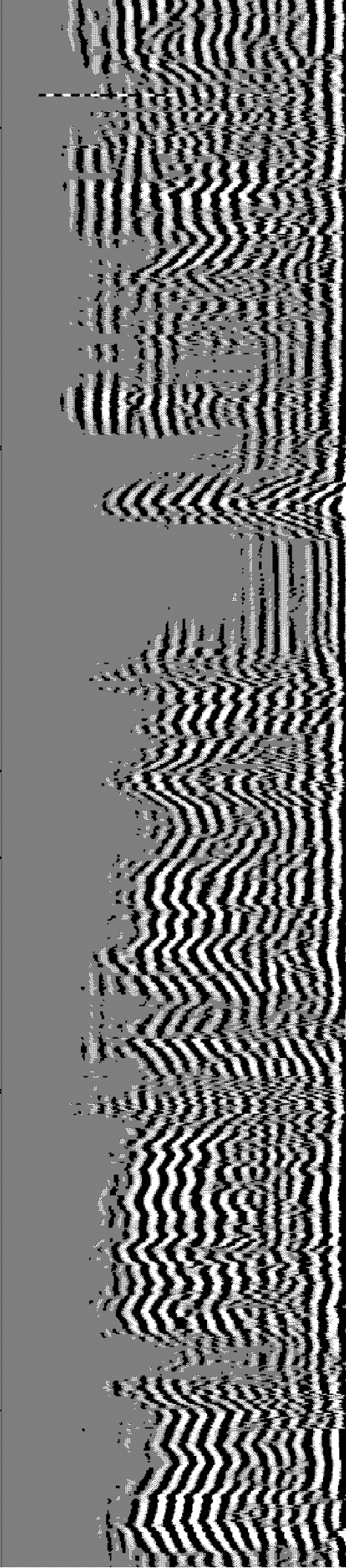
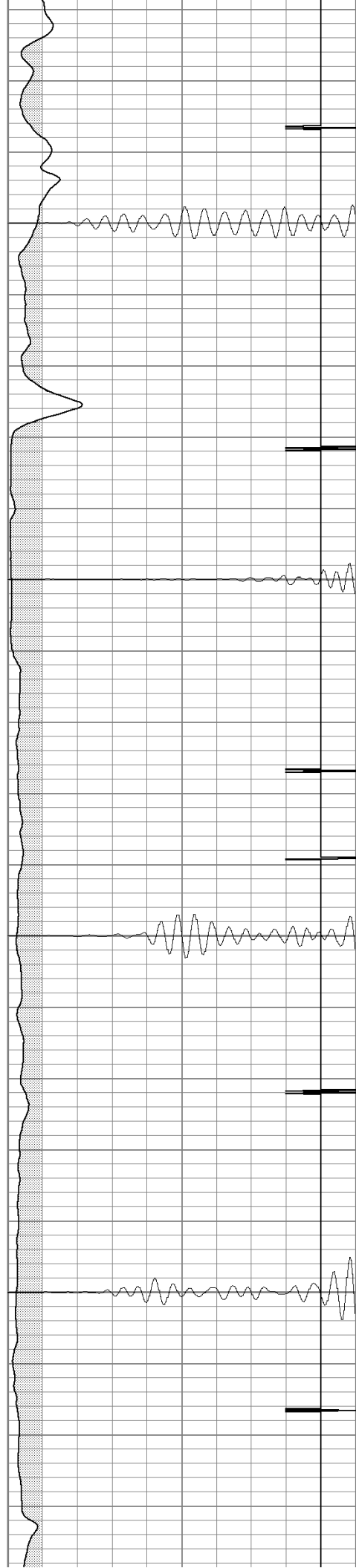


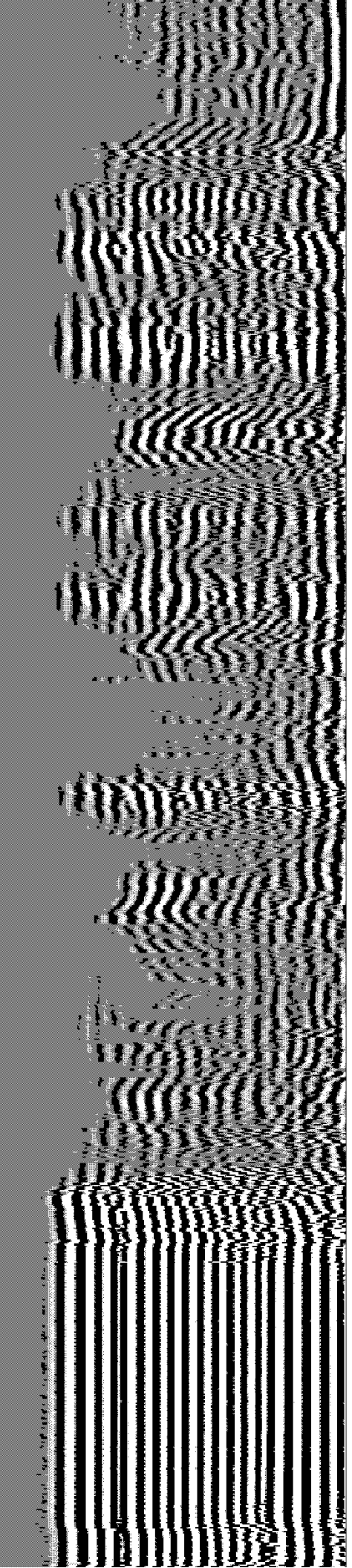
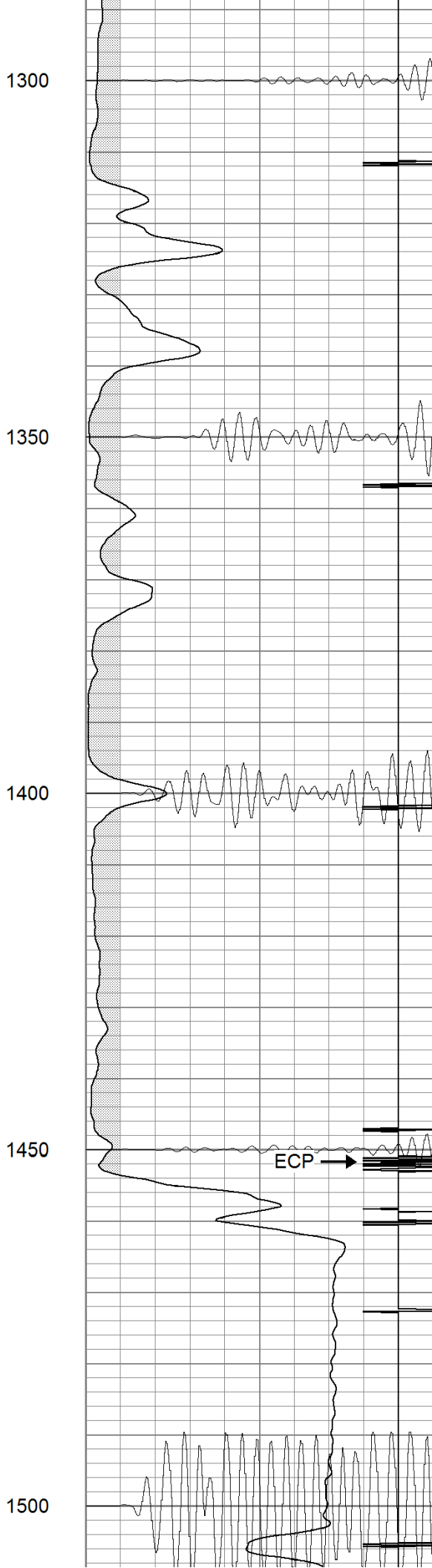
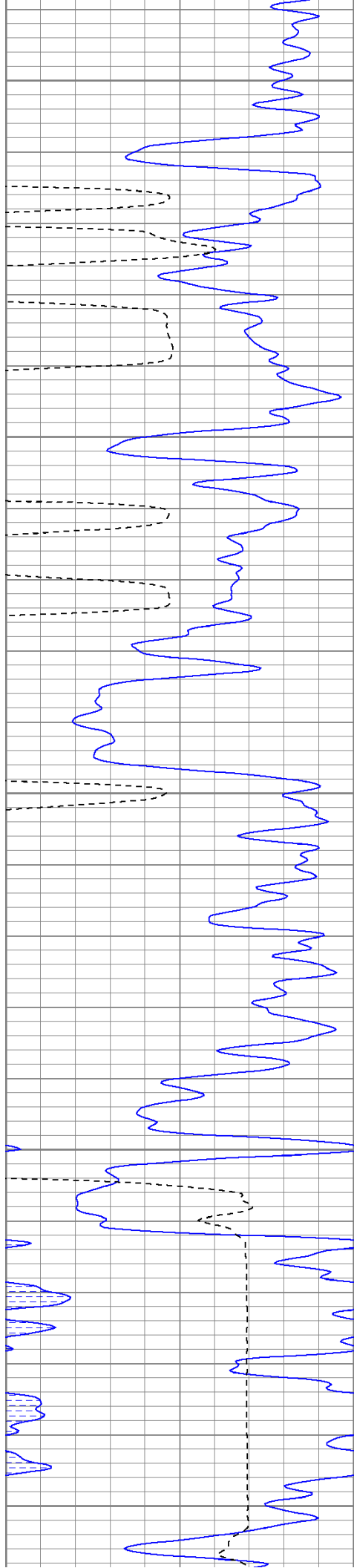
1100

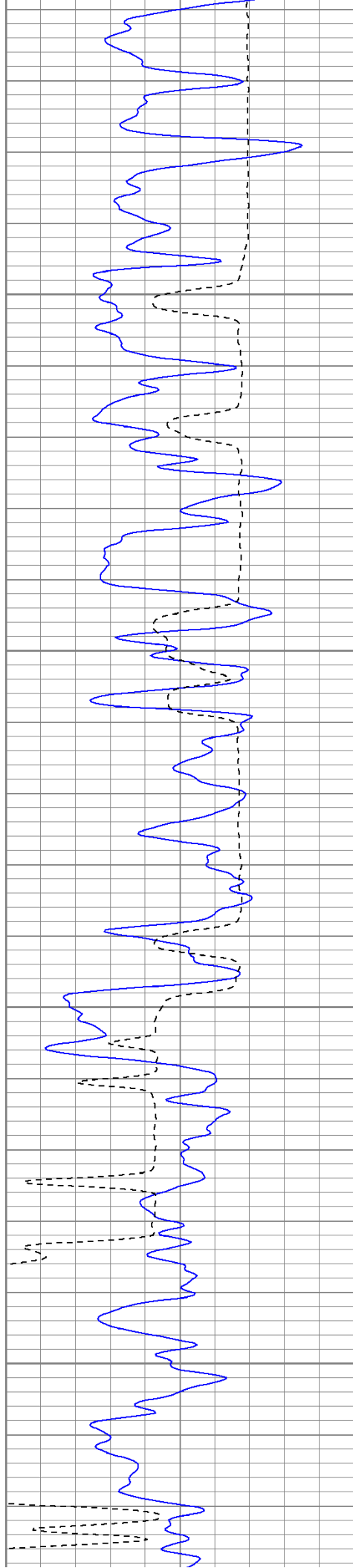
1150

1200

1250





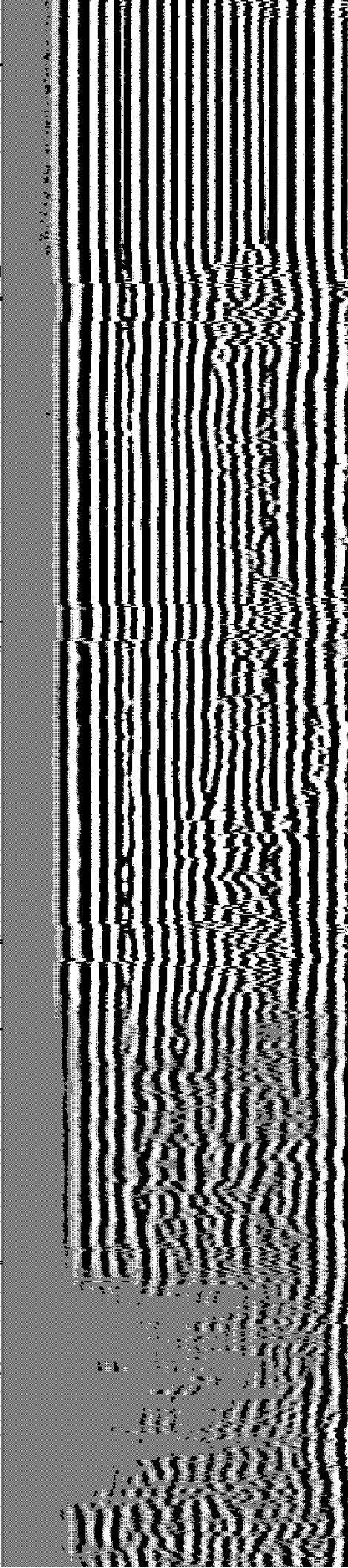
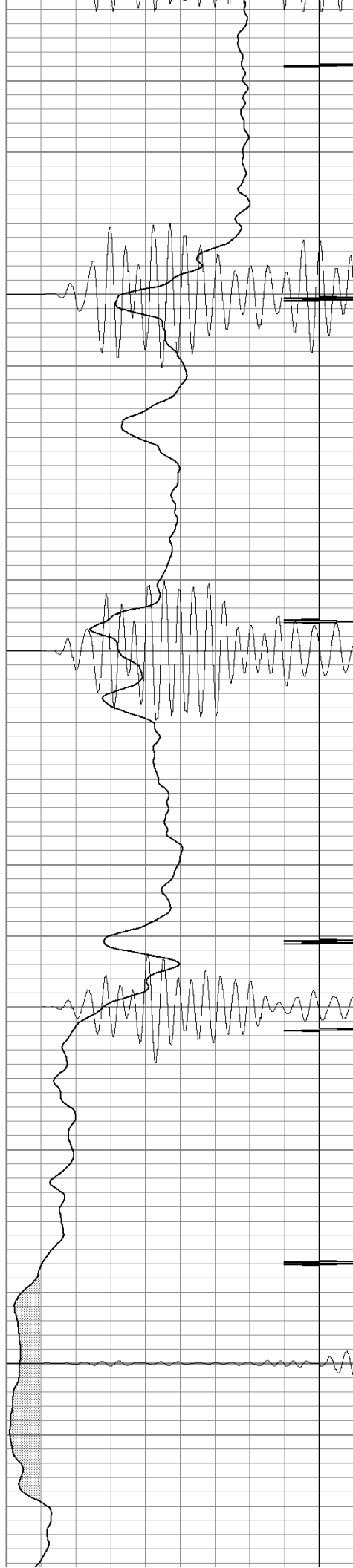


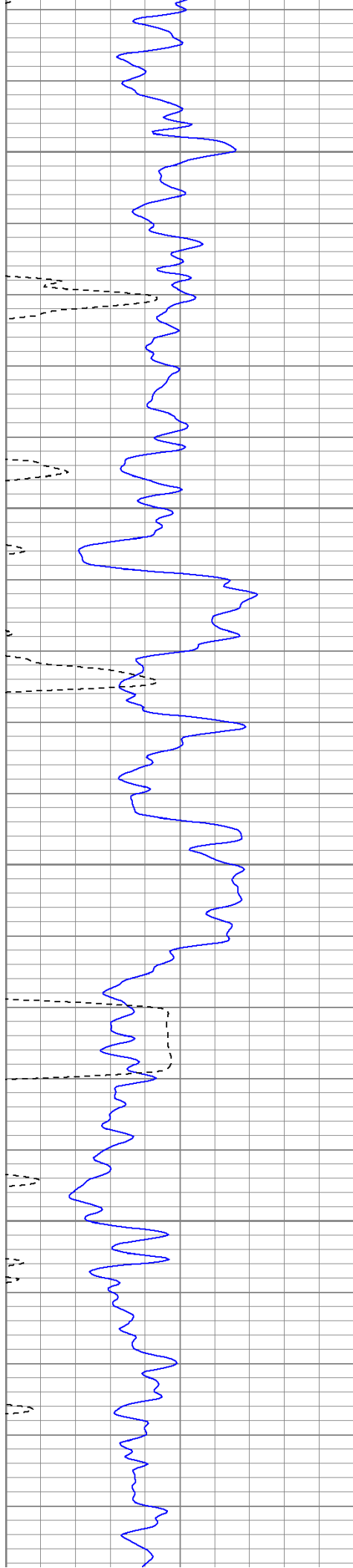
1550

1600

1650

1700



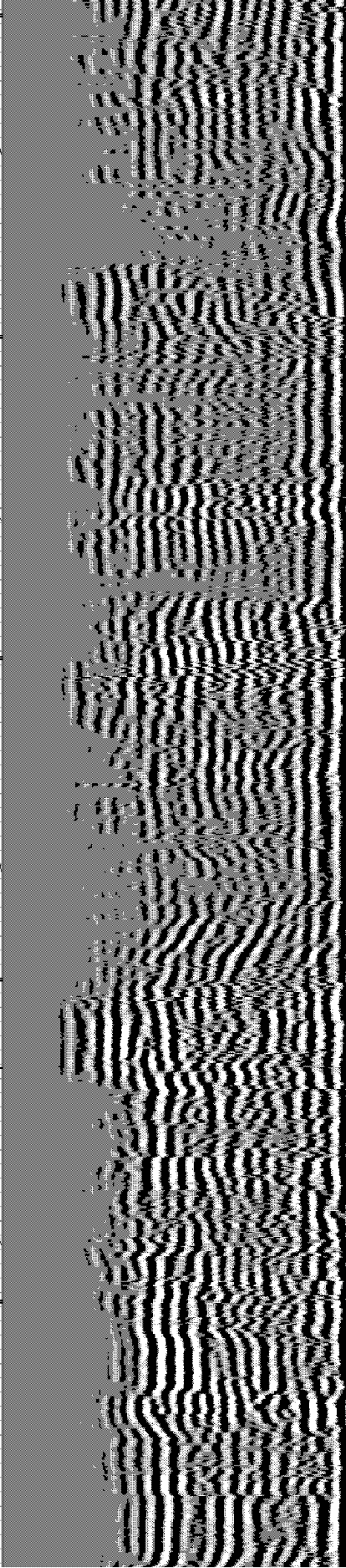
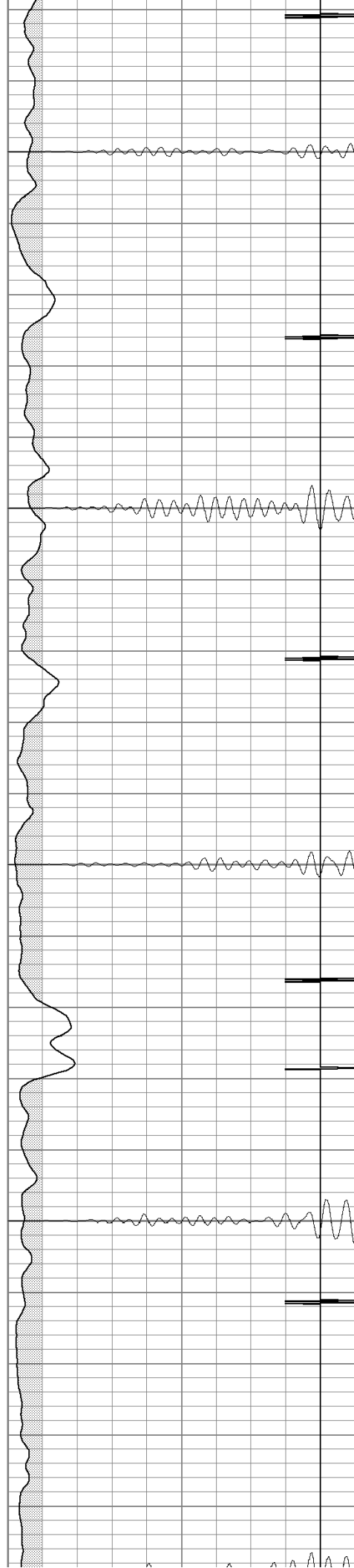


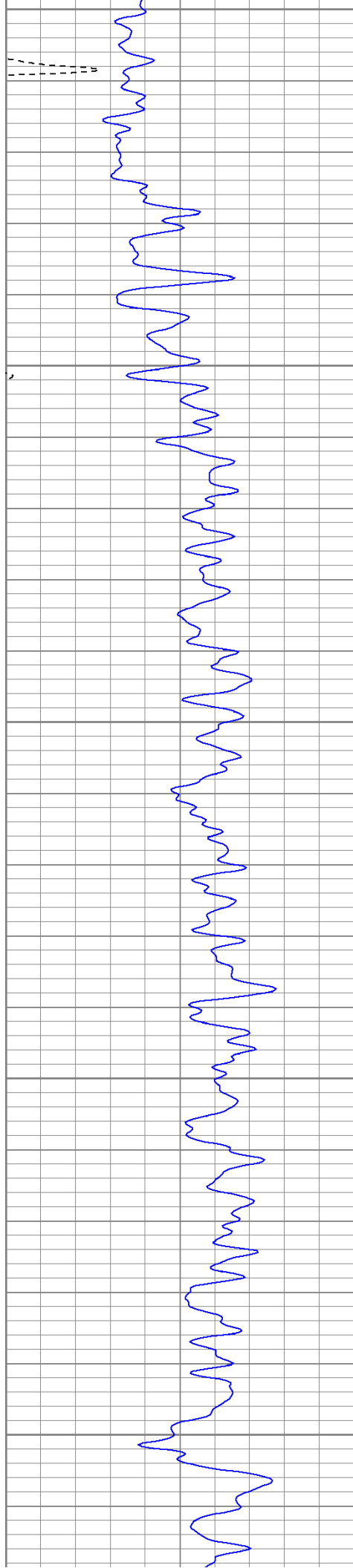
1750

1800

1850

1900





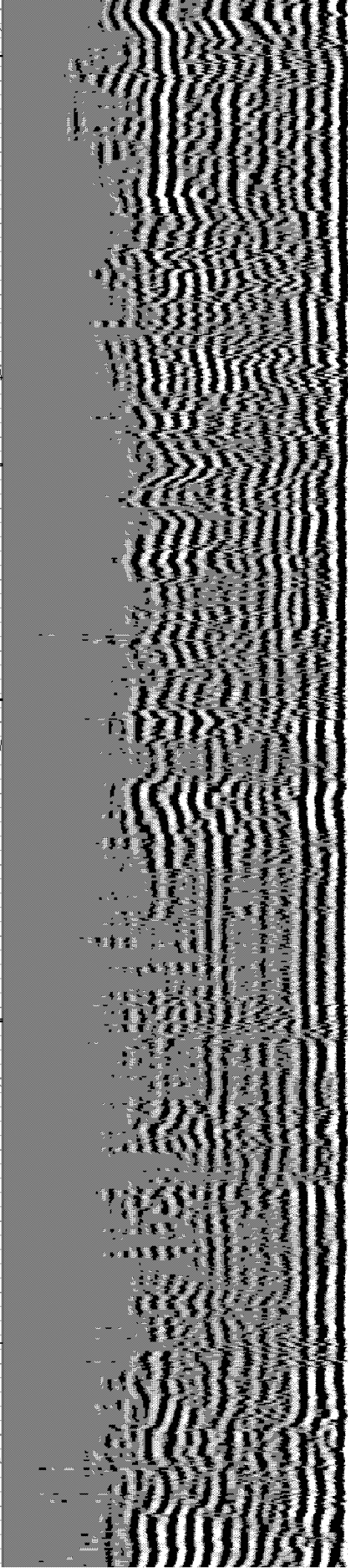
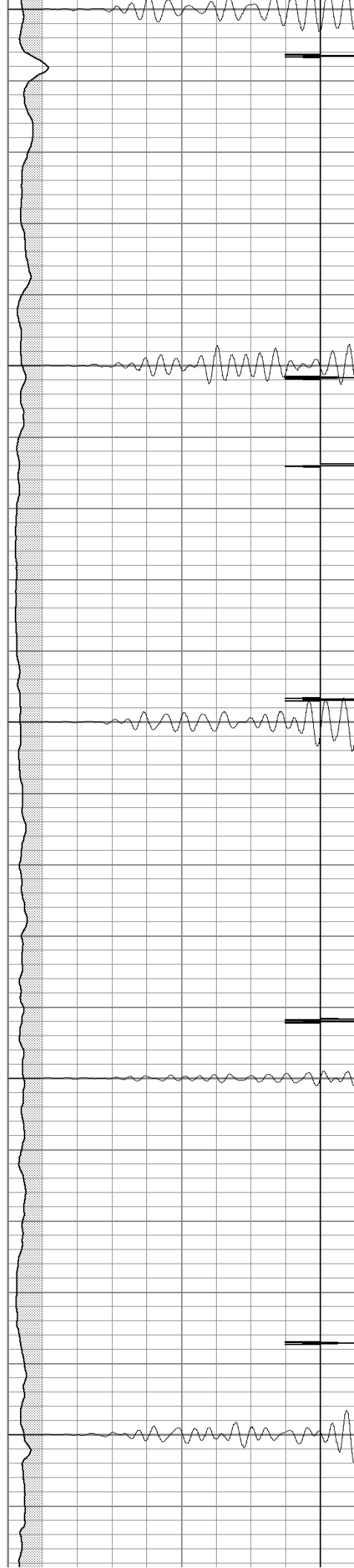
1950

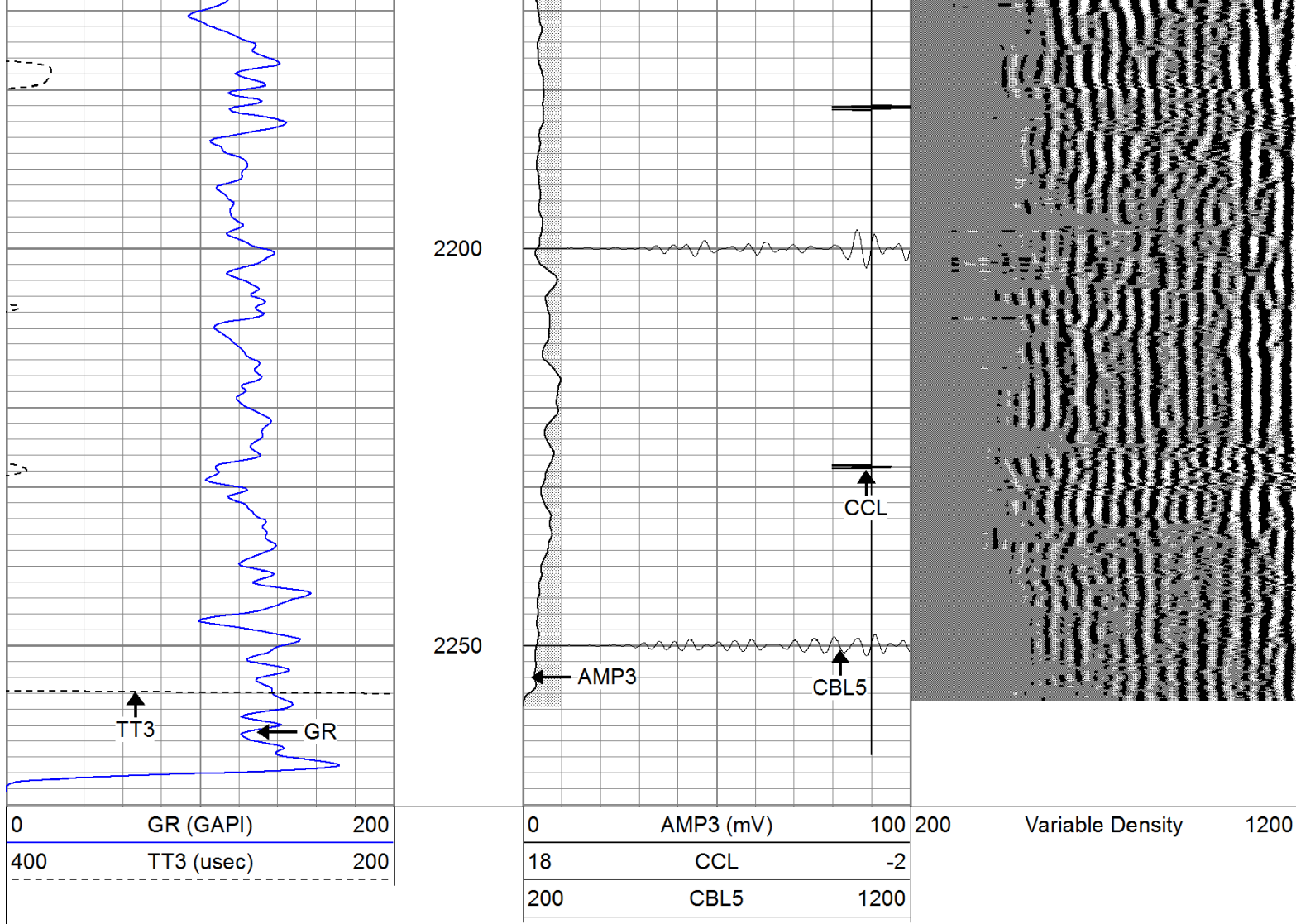
2000

2050

2100

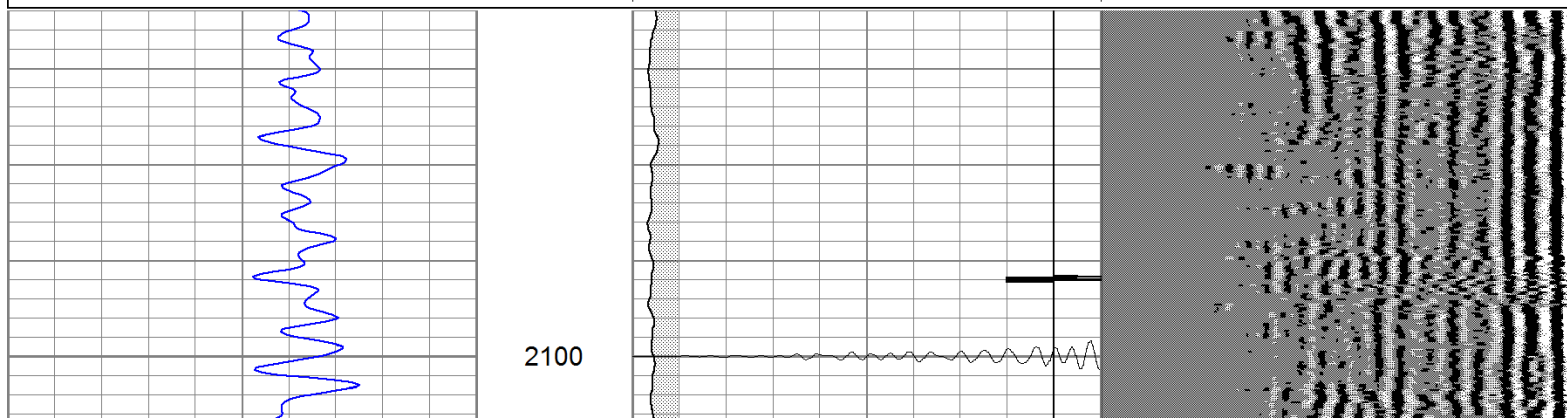
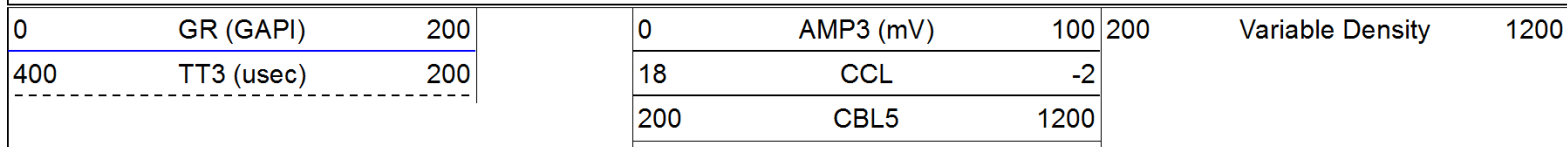
2150

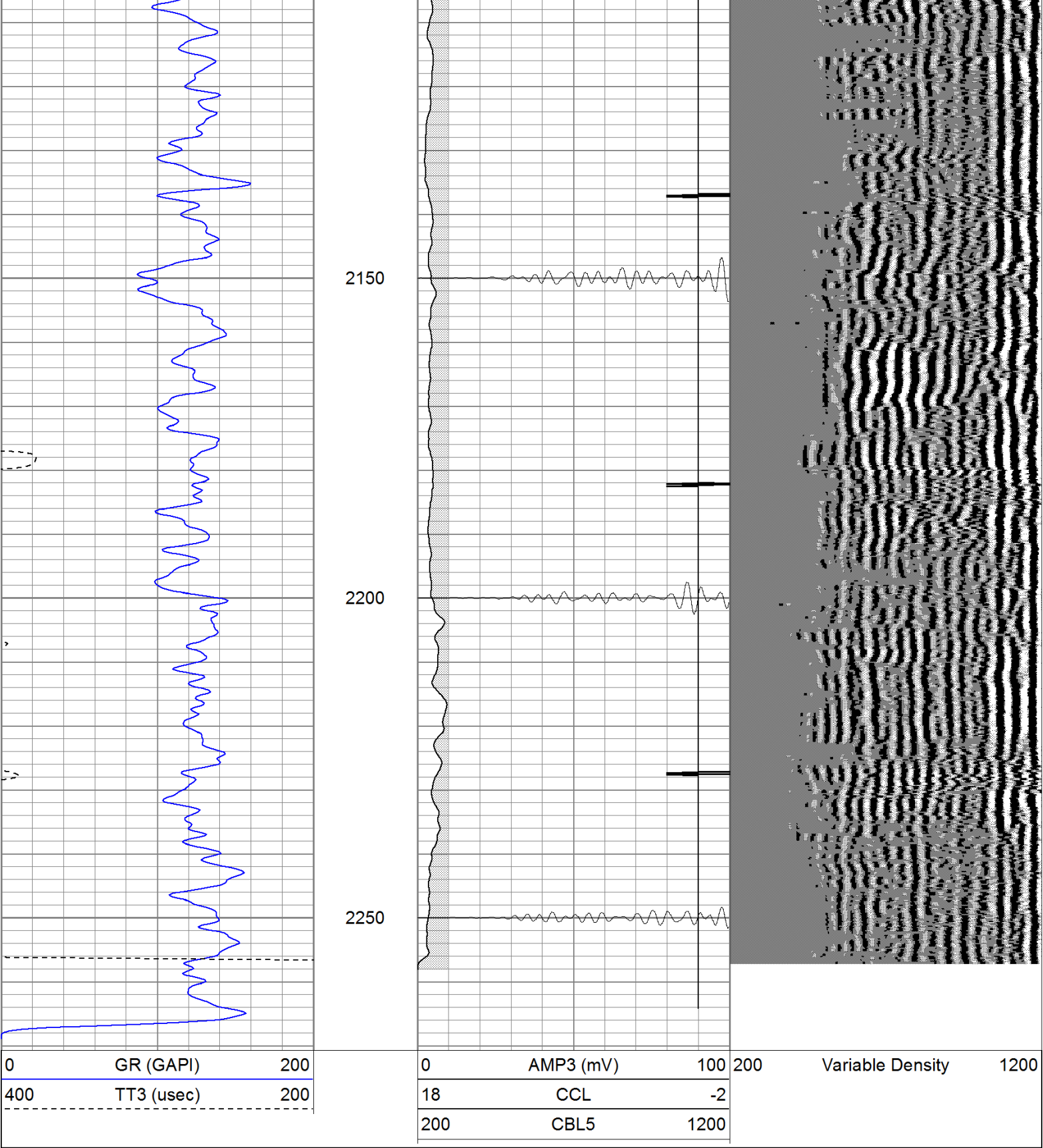




Repeat Pass

Database File: hr02-086411b.db
 Dataset Pathname: pass1
 Presentation Format: cblrt
 Dataset Creation: Sat Jun 04 12:26:45 2011 by Log Open-Cased 110302
 Charted by: Depth in Feet scaled 1:240





Calibration Report

Database File: hr02-086411b.db
Dataset Pathname: pass1
Dataset Creation: Sat Jun 04 12:26:45 2011 by Log Open-Cased 110302

Gamma Ray Calibration Report

Serial Number: 080616
Tool Model: 275D_INC
Performed: Wed May 04 17:31:09 2011

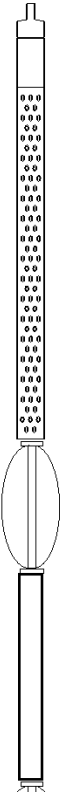
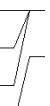
Calibrator Value:	200.0	GAPI
Background Reading:	50.0	cps
Calibrator Reading:	250.0	cps
Sensitivity:	1.0000	GAPI/cps

Inclinometer Calibration Report

Performed:	Wed May 04 17:39:54 2011				
	Low Read.	High Read.	Low Ref.	High Ref.	
X Accelerometer	-3585.20	3595.40	-1.00	1.00	gee
Y Accelerometer	-3619.40	3520.00	-1.00	1.00	gee
Z Accelerometer					

Cement Bond Log Calibration Report

Serial Number:	081024				
Tool Model:	PROBEDIGITALCBL				
Performed:	Thu Jun 02 14:11:23 2011				
Depth:	45.379	ft			
Casing Diameter:	5.5	in			
	3' Spacing		5' Spacing		
Signal Zero:	0		0		mV
Calibrated Amplitude:	85		85		mV
Reading at Signal Zero:	-0.00598145		-0.00627441		V
Reading in Free Pipe:	1.673		1.23376		V
Gain:	50.6259		68.5462		
Offset:	0.302816		0.430087		

Sensor	Offset (ft)	Schematic	Description	Len (ft)	OD (in)	Wt (lb)
			None	0.75	1.50	5.00
WVF3	14.54		CBL-PROBEDIGITALCBL (081024)	8.75	2.75	106.50
WVF5	13.54		PROBE DIGITAL CBL			
			Tekco	2.90	1.69	5.00
CCL	6.40		GR-275D_INC (080616)	4.50	2.75	50.00
ACCX	4.73		2-3/4" GR-CCL with Inclination			
ACCY	4.73					
ACCZ	4.73					

