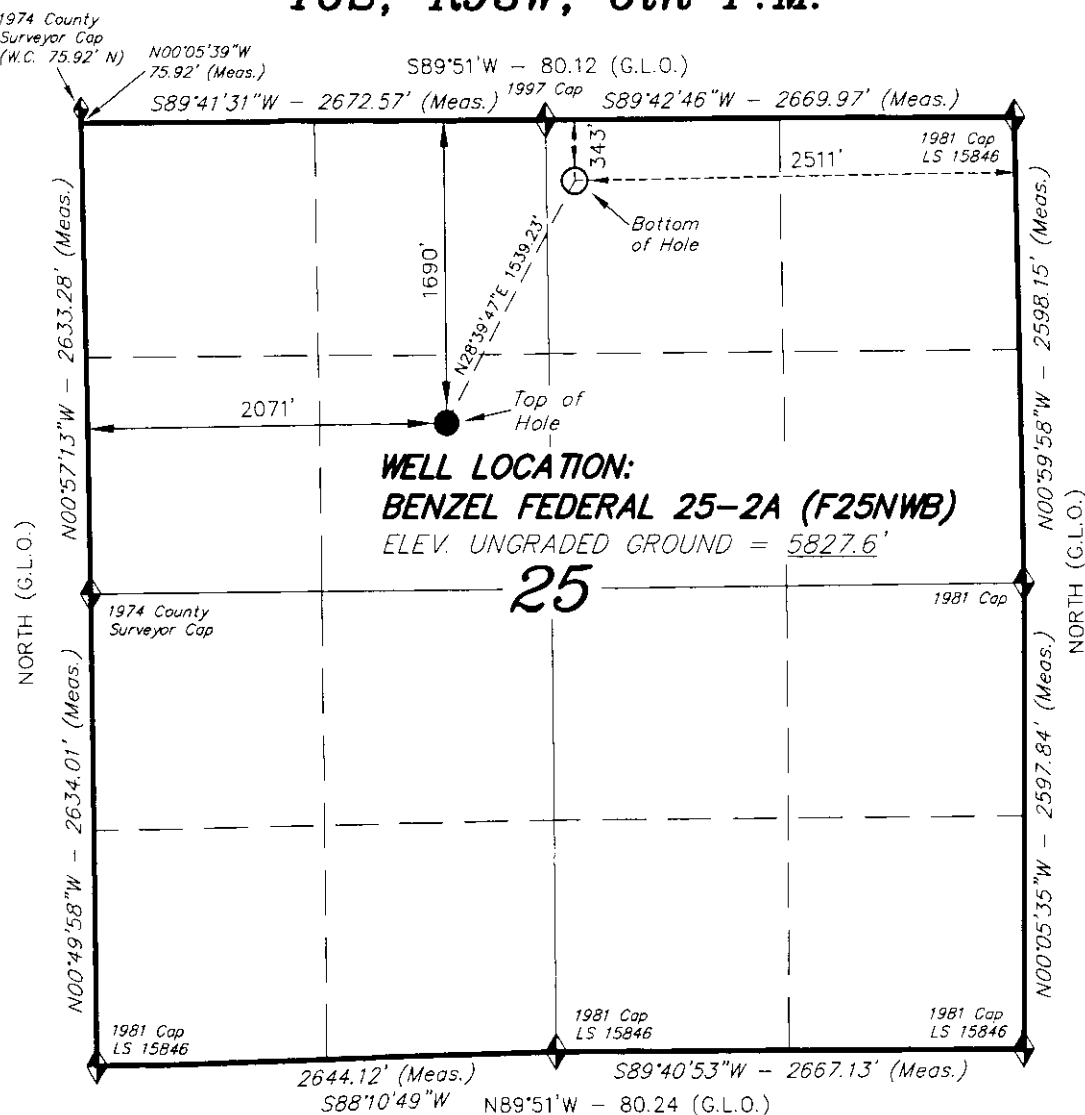


T6S, R93W, 6th P.M.

ENCANA OIL & GAS (USA) INC

WELL LOCATION, BENZEL FEDERAL 25-2A
(F25NWB), LOCATED AS SHOWN IN THE SE
1/4 NW 1/4 OF SECTION 25, T6S, R93W,
6th P.M. GARFIELD COUNTY, COLORADO.



A horizontal graphic scale bar with alternating black and white segments. Above the bar, vertical tick marks are labeled '1000'', '500'', and '0'. Below the bar, the words 'BAR' and 'SCALE' are printed.

NOTES:

1. Well footages are measured at right angles to the Section Lines.
2. Bearings are based on Global Positioning Satellite observations.
3. G.P.S. Operator:
C.D. SLAUGH, (PDOP) = 2.4

IMPROVEMENT NOTE:

See addendum to legal plat (sheet 2v)
for visible improvements within 400' of
the proposed well pad.

THIS IS TO CERTIFY THAT THE ABOVE PLAT WAS
PREPARED FROM FIELD NOTES OF ~~THE~~ PERMANENT SURVEYS
MADE BY ME OR UNDER MY SUPERVISOR, REGUL LOCATION
HAS BEEN STAKED ON THE GROUND AS SHOWN ON THE
PLAT, AND THAT THE SAME ARE TRUE AND CORRECT
TO THE BEST OF MY KNOWLEDGE AND BELIEF.

REGISTERED LAND SURVEYOR
REGISTRATION No. 30125
STATE OF COLORADO

TRI STATE LAND SURVEYING & CONSULTING

180 NORTH VERNAL AVE. - VERNAL, UTAH 84078
(435) 781-2501

| | | |
|-----------------------------|---------------------|-----------------------------|
| DATE SURVEYED: 11-08-10 | SURVEYED BY: C.D.S. | SHEET 2u OF 11 |
| DATE DRAWN: 02-28-11 | DRAWN BY: L.C.S. | |
| REVISED: L.C.S. 03-24-11 | SCALE: 1" = 1000' | |

 = SECTION CORNERS LOCATED

Basis of elevation is the Rifle 2 Triangulation Station. 39°31'53.80" N Lat. & 107°47'07.78" W Long. (NAD 83). Elevation = 5323.1' (NAVD88).

| | |
|---------------------------|---------------------------------|
| NAD 83 (SURFACE LOCATION) | |
| LATITUDE | = 39°30'00.42" (39.500117) |
| LONGITUDE | = 107°43'34.65" (107.726292) |