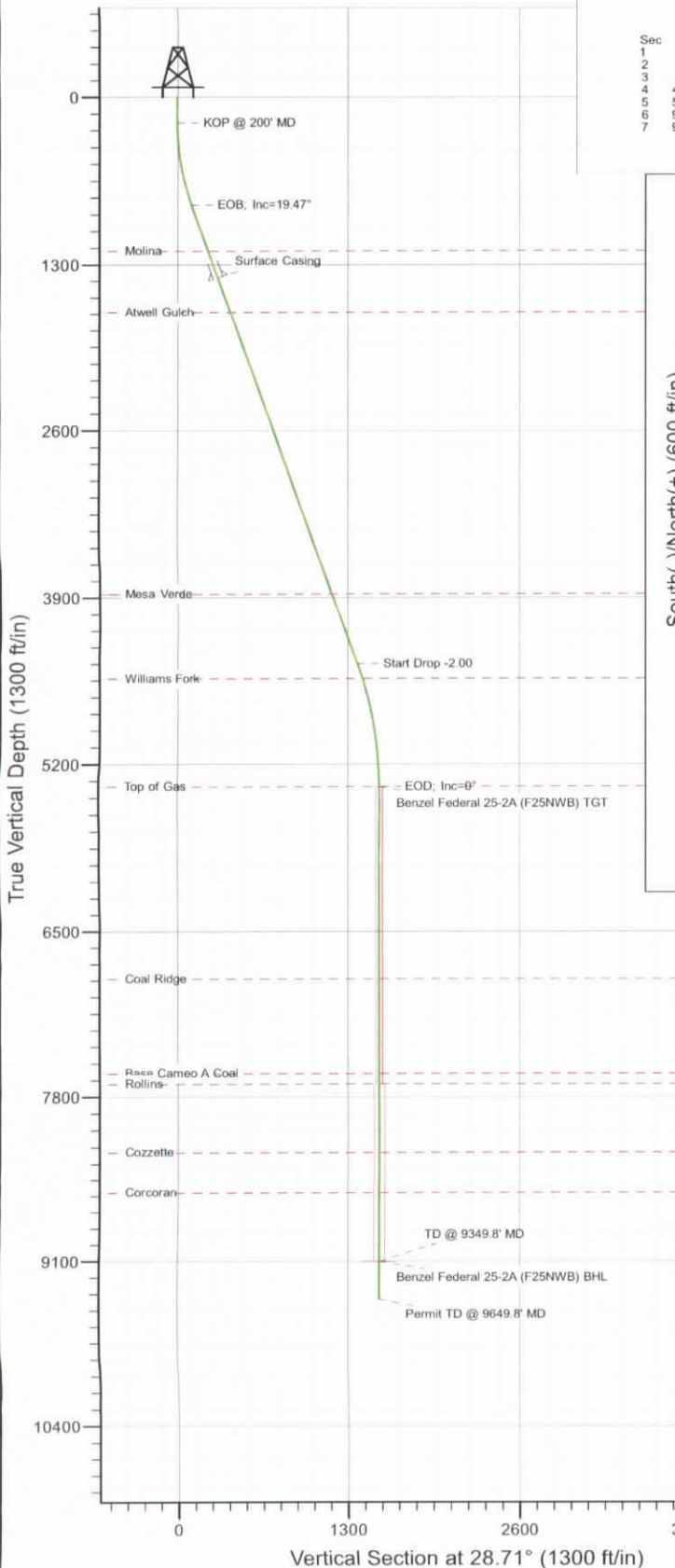
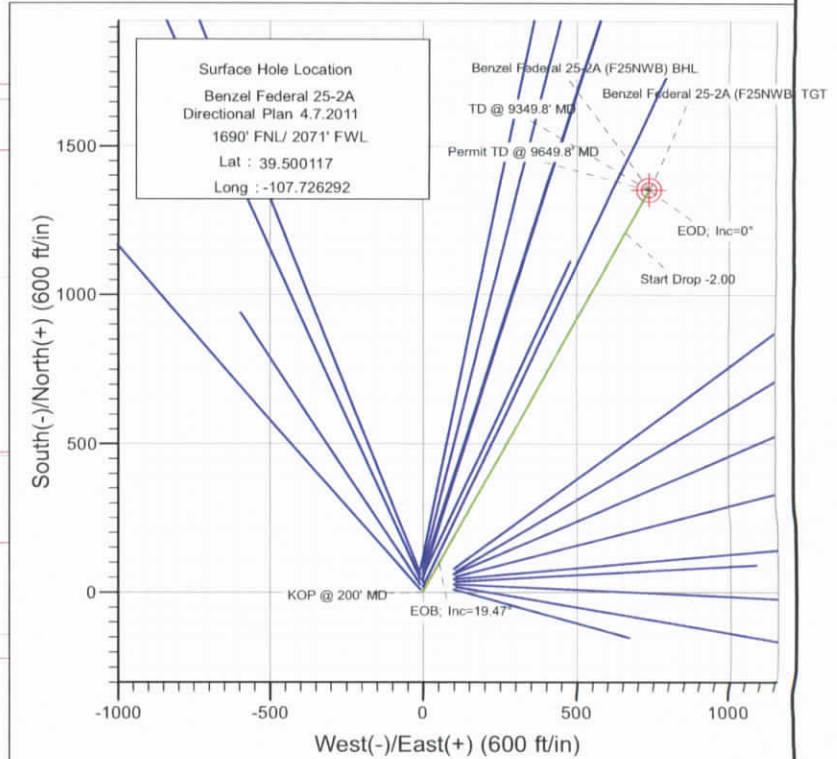




Project: Mamm Creek
 Site: F25NWB Pad
 Well: Benzel Federal 25-2A (F25NWB Pad) Directional Plan 4.7.2011
 Wellbore: DD
 Design: Plan #1



SECTION DETAILS										
Sec	MD	Inc	Azi	TVD	+N/-S	+E/-W	Dleg	TFace	VSection	Target
1	0.0	0.00	0.00	0.0	0.0	0.0	0.00	0.00	0.0	
2	200.0	0.00	0.00	200.0	0.0	0.0	0.00	0.00	0.0	
3	848.8	19.47	28.71	836.4	95.7	52.4	3.00	28.71	109.2	
4	4648.5	19.47	28.71	4419.0	1206.3	660.6	0.00	0.00	1375.3	
5	5621.8	0.00	0.00	5373.6	1349.9	739.3	2.00	180.00	1539.1	Benzel Federal 25-2A (F25NWB) TGT
6	9349.8	0.00	0.00	9101.6	1349.9	739.3	0.00	0.00	1539.1	Benzel Federal 25-2A (F25NWB) BHL
7	9649.8	0.00	0.00	9401.6	1349.9	739.3	0.00	0.00	1539.1	



FORMATION TOP DETAILS		
TVDPath	MDPath	Formation
1191.6	1225.5	Molina
1677.6	1741.0	Atwell Gulch
3872.6	4069.1	Mesa Verde
4536.6	4772.4	Williams Fork
5373.6	5621.8	Top of Gas
6876.6	7124.8	Coal Ridge
7617.6	7865.8	Base Cameo A Coal
7699.6	7947.8	Rollins
8229.6	8477.8	Cozzette
8551.6	8799.8	Corcoran



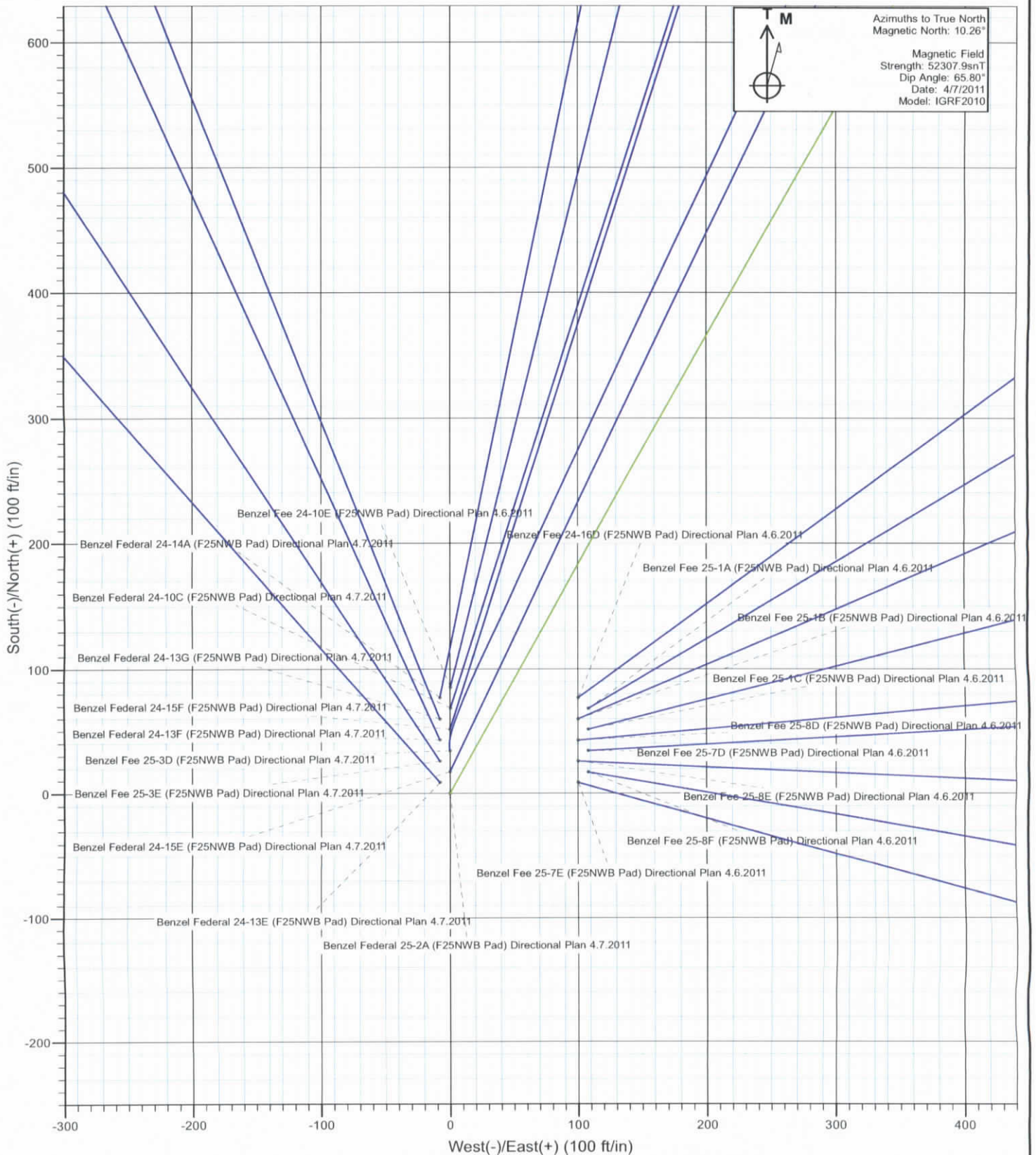
Azimuths to True North
 Magnetic North: 10.26°
 Magnetic Field
 Strength: 52307.9snT
 Dip Angle: 65.80°
 Date: 4/7/2011
 Model: IGRF2010

Plan #1
 Benzel Federal 25-2A (F25NWB Pad) Directional Plan 4.7.2011
 115XXX: BH
 KBE @ 5849.6ft (Original Well Elev)
 North American Datum 1983
 Well Benzel Federal 25-2A (F25NWB Pad) Directional Plan 4.7.2011, True North

Type	Target	Azimuth	Origin	Type	N/S	E/W	From	TVD
Target	Benzel Federal 25-2A (F25NWB) BHL	28.71	0.0	0.0	0.0	0.0	0.0	0.0
Name	Benzel Federal 25-2A (F25NWB) TGT	5373.6	1349.9	+N/-S	39.503823	-107.723672		
	Benzel Federal 25-2A (F25NWB) BHL	9101.6	1349.9	+E/-W	739.3	-107.723672		

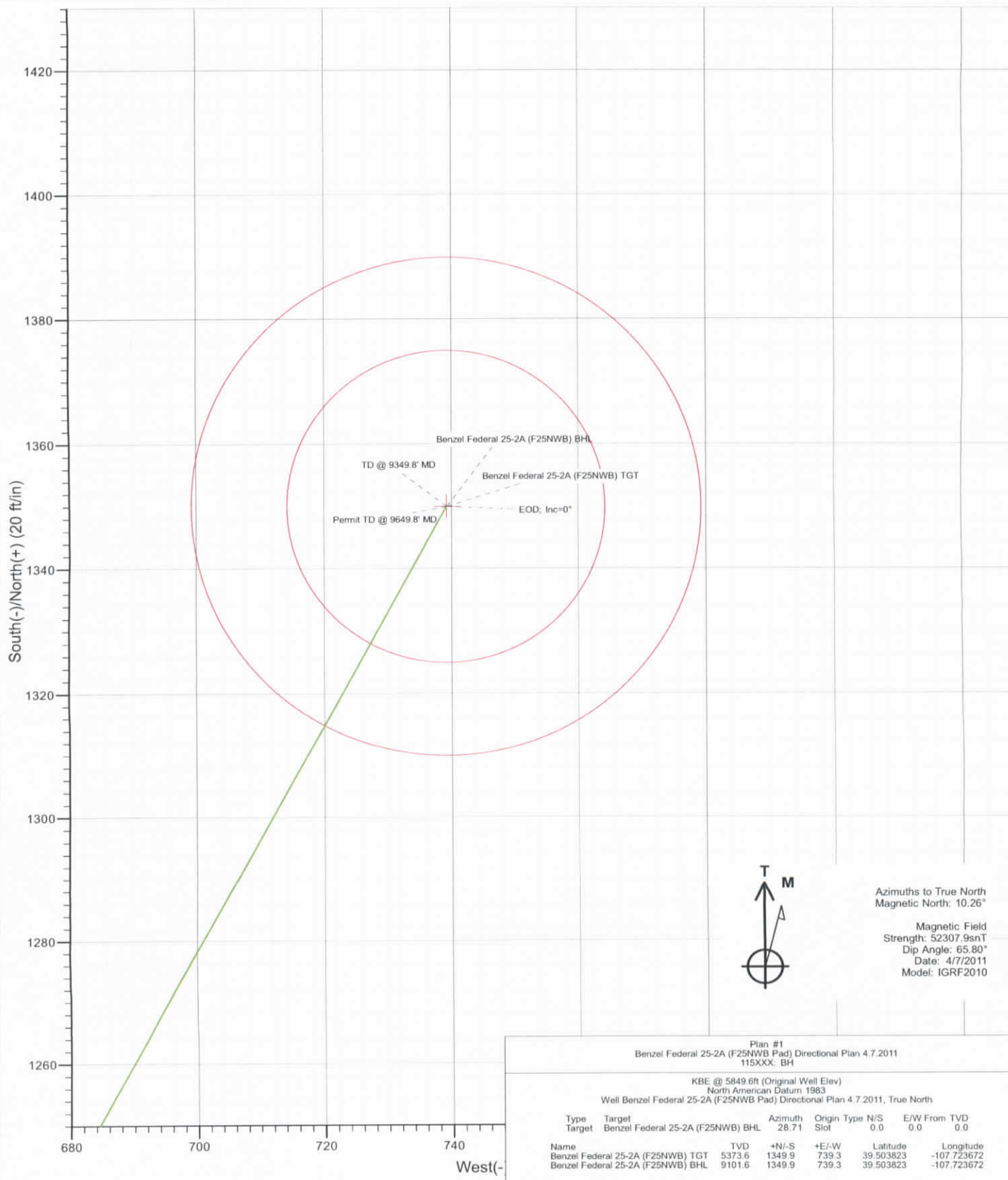


Project: Mamm Creek
Site: F25NWB Pad
Well: Benzel Federal 25-2A (F25NWB Pad) Directional Plan 4.7.2011
Wellbore: DD
Design: Plan #1





Project: Mamm Creek
 Site: F25NWB Pad
 Well: Benzel Federal 25-2A (F25NWB Pad) Directional Plan 4.7.2011
 Wellbore: DD
 Design: Plan #1



Plan #1 Benzel Federal 25-2A (F25NWB Pad) Directional Plan 4.7.2011 115XXX: BH						
KBE @ 5849.6ft (Original Well Elev) North American Datum 1983 Well Benzel Federal 25-2A (F25NWB Pad) Directional Plan 4.7.2011, True North						
Type	Target	Target	Azimuth	Origin	Type	N/S
Target	Benzel Federal 25-2A (F25NWB) BHL		28.71	Slot		0.0
						0.0
Name	Target	TVD	+N/-S	+E/-W	Latitude	Longitude
Benzel Federal 25-2A (F25NWB) TGT		5373.6	1349.9	739.3	39.503823	-107.723672
Benzel Federal 25-2A (F25NWB) BHL		9101.6	1349.9	739.3	39.503823	-107.723672

Cathedral Energy Services

Planning Report

Database:	EDM 5000.1 US Multi Users DB	Local Co-ordinate Reference:	Well Benzel Federal 25-2A (F25NWB Pad) Direc
Company:	EnCana Oil & Gas (USA) Inc	TVD Reference:	KBE @ 5849.6ft (Original Well Elev)
Project:	Mamm Creek	MD Reference:	KBE @ 5849.6ft (Original Well Elev)
Site:	F25NWB Pad	North Reference:	True
Well:	Benzel Federal 25-2A (F25NWB Pad) Directional Plan	Survey Calculation Method:	Minimum Curvature
Wellbore:	DD		
Design:	Plan #1		

Project	Mamm Creek		
Map System:	US State Plane 1983	System Datum:	Mean Sea Level
Geo Datum:	North American Datum 1983		
Map Zone:	Colorado Central Zone		

Site	F25NWB Pad		
Site Position:		Northing:	1,614,821.30 ft
From:	Lat/Long	Easting:	2,371,946.03 ft
Position Uncertainty:	0.0 ft	Slot Radius:	13.200 in
		Latitude:	39.500328
		Longitude:	-107.725936
		Grid Convergence:	-1.40 °

Well	Benzel Federal 25-2A (F25NWB Pad) Directional Plan 4.7.2011					
Well Position	+N/-S	0.0 ft	Northing:	1,614,746.92 ft	Latitude:	39.500117
	+E/-W	0.0 ft	Easting:	2,371,843.72 ft	Longitude:	-107.726292
Position Uncertainty		0.0 ft	Wellhead Elevation:	ft	Ground Level:	5,827.6 ft

Wellbore	DD
-----------------	----

Magnetics	Model Name	Sample Date	Declination (°)	Dip Angle (°)	Field Strength (nT)
	IGRF2010	4/7/2011	10.26	65.80	52,308

Design	Plan #1
---------------	---------

Audit Notes:	
---------------------	--

Version:	Phase:	PLAN	Tie On Depth:	0.0
-----------------	---------------	------	----------------------	-----

Vertical Section:	Depth From (TVD) (ft)	+N/-S (ft)	+E/-W (ft)	Direction (°)
	0.0	0.0	0.0	28.71

Plan Sections										
Measured Depth (ft)	Inclination (°)	Azimuth (°)	Vertical Depth (ft)	+N/-S (ft)	+E/-W (ft)	Dogleg Rate (°/100ft)	Build Rate (°/100ft)	Turn Rate (°/100ft)	TFO (°)	Target
0.0	0.00	0.00	0.0	0.0	0.0	0.00	0.00	0.00	0.00	
200.0	0.00	0.00	200.0	0.0	0.0	0.00	0.00	0.00	0.00	
848.8	19.47	28.71	836.4	95.7	52.4	3.00	3.00	0.00	28.71	
4,648.5	19.47	28.71	4,419.0	1,206.3	660.6	0.00	0.00	0.00	0.00	
5,621.8	0.00	0.00	5,373.6	1,349.9	739.3	2.00	-2.00	0.00	180.00	Benzel Federal 25-2A
9,349.8	0.00	0.00	9,101.6	1,349.9	739.3	0.00	0.00	0.00	0.00	Benzel Federal 25-2A
9,649.8	0.00	0.00	9,401.6	1,349.9	739.3	0.00	0.00	0.00	0.00	

Cathedral Energy Services

Planning Report

Database: EDM 5000.1 US Multi Users DB
Company: EnCana Oil & Gas (USA) Inc
Project: Mamm Creek
Site: F25NWB Pad
Well: Benzel Federal 25-2A (F25NWB Pad) Directional Plan
Wellbore: DD
Design: Plan #1

Local Co-ordinate Reference:
TVD Reference:
MD Reference:
North Reference:
Survey Calculation Method:

Well Benzel Federal 25-2A (F25NWB Pad) Direc
 KBE @ 5849.6ft (Original Well Elev)
 KBE @ 5849.6ft (Original Well Elev)
 True
 Minimum Curvature

Planned Survey

Measured Depth (ft)	Inclination (°)	Azimuth (°)	Vertical Depth (ft)	+N/-S (ft)	+E/-W (ft)	Vertical Section (ft)	Dogleg Rate (°/100ft)	Build Rate (°/100ft)	Comments / Formations
0.0	0.00	0.00	0.0	0.0	0.0	0.0	0.00	0.00	
100.0	0.00	0.00	100.0	0.0	0.0	0.0	0.00	0.00	
200.0	0.00	0.00	200.0	0.0	0.0	0.0	0.00	0.00	KOP @ 200' MD
300.0	3.00	28.71	300.0	2.3	1.3	2.6	3.00	3.00	
400.0	6.00	28.71	399.6	9.2	5.0	10.5	3.00	3.00	
500.0	9.00	28.71	498.8	20.6	11.3	23.5	3.00	3.00	
600.0	12.00	28.71	597.1	36.6	20.0	41.7	3.00	3.00	
700.0	15.00	28.71	694.3	57.1	31.3	65.1	3.00	3.00	
800.0	18.00	28.71	790.2	82.0	44.9	93.5	3.00	3.00	
848.8	19.47	28.71	836.4	95.7	52.4	109.2	3.00	3.00	EOB; Inc=19.47°
900.0	19.47	28.71	884.7	110.7	60.6	126.2	0.00	0.00	
1,000.0	19.47	28.71	979.0	139.9	76.6	159.5	0.00	0.00	
1,100.0	19.47	28.71	1,073.2	169.1	92.6	192.9	0.00	0.00	
1,200.0	19.47	28.71	1,167.5	198.4	108.6	226.2	0.00	0.00	
1,225.5	19.47	28.71	1,191.6	205.8	112.7	234.7	0.00	0.00	Molina
1,300.0	19.47	28.71	1,261.8	227.6	124.6	259.5	0.00	0.00	
1,400.0	19.47	28.71	1,356.1	256.8	140.7	292.8	0.00	0.00	
1,450.0	19.47	28.71	1,403.2	271.4	148.7	309.5	0.00	0.00	Surface Casing
1,500.0	19.47	28.71	1,450.4	286.1	156.7	326.1	0.00	0.00	
1,600.0	19.47	28.71	1,544.7	315.3	172.7	359.5	0.00	0.00	
1,700.0	19.47	28.71	1,638.9	344.5	188.7	392.8	0.00	0.00	
1,741.0	19.47	28.71	1,677.6	356.5	195.2	406.5	0.00	0.00	Atwell Gulch
1,800.0	19.47	28.71	1,733.2	373.7	204.7	426.1	0.00	0.00	
1,900.0	19.47	28.71	1,827.5	403.0	220.7	459.4	0.00	0.00	
2,000.0	19.47	28.71	1,921.8	432.2	236.7	492.8	0.00	0.00	
2,100.0	19.47	28.71	2,016.1	461.4	252.7	526.1	0.00	0.00	
2,200.0	19.47	28.71	2,110.4	490.6	268.7	559.4	0.00	0.00	
2,300.0	19.47	28.71	2,204.6	519.9	284.7	592.7	0.00	0.00	
2,400.0	19.47	28.71	2,298.9	549.1	300.7	626.1	0.00	0.00	
2,500.0	19.47	28.71	2,393.2	578.3	316.7	659.4	0.00	0.00	
2,600.0	19.47	28.71	2,487.5	607.6	332.7	692.7	0.00	0.00	
2,700.0	19.47	28.71	2,581.8	636.8	348.7	726.0	0.00	0.00	
2,800.0	19.47	28.71	2,676.1	666.0	364.7	759.4	0.00	0.00	
2,900.0	19.47	28.71	2,770.4	695.2	380.8	792.7	0.00	0.00	
3,000.0	19.47	28.71	2,864.6	724.5	396.8	826.0	0.00	0.00	
3,100.0	19.47	28.71	2,958.9	753.7	412.8	859.3	0.00	0.00	
3,200.0	19.47	28.71	3,053.2	782.9	428.8	892.6	0.00	0.00	
3,300.0	19.47	28.71	3,147.5	812.1	444.8	926.0	0.00	0.00	
3,400.0	19.47	28.71	3,241.8	841.4	460.8	959.3	0.00	0.00	
3,500.0	19.47	28.71	3,336.1	870.6	476.8	992.6	0.00	0.00	
3,600.0	19.47	28.71	3,430.3	899.8	492.8	1,025.9	0.00	0.00	
3,700.0	19.47	28.71	3,524.6	929.1	508.8	1,059.3	0.00	0.00	
3,800.0	19.47	28.71	3,618.9	958.3	524.8	1,092.6	0.00	0.00	
3,900.0	19.47	28.71	3,713.2	987.5	540.8	1,125.9	0.00	0.00	
4,000.0	19.47	28.71	3,807.5	1,016.7	556.8	1,159.2	0.00	0.00	
4,069.1	19.47	28.71	3,872.6	1,036.9	567.9	1,182.2	0.00	0.00	Mesa Verde
4,100.0	19.47	28.71	3,901.8	1,046.0	572.8	1,192.6	0.00	0.00	
4,200.0	19.47	28.71	3,996.1	1,075.2	588.8	1,225.9	0.00	0.00	
4,300.0	19.47	28.71	4,090.3	1,104.4	604.8	1,259.2	0.00	0.00	
4,400.0	19.47	28.71	4,184.6	1,133.6	620.9	1,292.5	0.00	0.00	
4,500.0	19.47	28.71	4,278.9	1,162.9	636.9	1,325.8	0.00	0.00	
4,600.0	19.47	28.71	4,373.2	1,192.1	652.9	1,359.2	0.00	0.00	

Cathedral Energy Services

Planning Report

Database:	EDM 5000.1 US Multi Users DB	Local Co-ordinate Reference:	Well Benzel Federal 25-2A (F25NWB Pad) Direc
Company:	EnCana Oil & Gas (USA) Inc	TVD Reference:	KBE @ 5849.6ft (Original Well Elev)
Project:	Mamm Creek	MD Reference:	KBE @ 5849.6ft (Original Well Elev)
Site:	F25NWB Pad	North Reference:	True
Well:	Benzel Federal 25-2A (F25NWB Pad) Directional Plan	Survey Calculation Method:	Minimum Curvature
Wellbore:	DD		
Design:	Plan #1		

Planned Survey

Measured Depth (ft)	Inclination (°)	Azimuth (°)	Vertical Depth (ft)	+N/-S (ft)	+E/-W (ft)	Vertical Section (ft)	Dogleg Rate (°/100ft)	Build Rate (°/100ft)	Comments / Formations
4,648.5	19.47	28.71	4,419.0	1,206.3	660.6	1,375.3	0.00	0.00	Start Drop -2.00
4,700.0	18.44	28.71	4,467.6	1,220.9	668.7	1,392.1	2.00	-2.00	
4,772.4	16.99	28.71	4,536.6	1,240.3	679.2	1,414.1	2.00	-2.00	Williams Fork
4,800.0	16.44	28.71	4,563.0	1,247.2	683.1	1,422.0	2.00	-2.00	
4,900.0	14.44	28.71	4,659.4	1,270.6	695.8	1,448.6	2.00	-2.00	
5,000.0	12.44	28.71	4,756.7	1,290.9	707.0	1,471.9	2.00	-2.00	
5,100.0	10.44	28.71	4,854.7	1,308.3	716.5	1,491.7	2.00	-2.00	
5,200.0	8.44	28.71	4,953.3	1,322.7	724.4	1,508.1	2.00	-2.00	
5,300.0	6.44	28.71	5,052.5	1,334.1	730.6	1,521.0	2.00	-2.00	
5,400.0	4.44	28.71	5,152.0	1,342.4	735.2	1,530.5	2.00	-2.00	
5,500.0	2.44	28.71	5,251.8	1,347.6	738.0	1,536.5	2.00	-2.00	
5,600.0	0.44	28.71	5,351.8	1,349.8	739.2	1,539.0	2.00	-2.00	
5,621.8	0.00	0.00	5,373.6	1,349.9	739.3	1,539.1	2.00	-2.00	EOD; Inc=0° - Top of Gas - Benzel Federal 25-2A
5,700.0	0.00	0.00	5,451.8	1,349.9	739.3	1,539.1	0.00	0.00	
5,800.0	0.00	0.00	5,551.8	1,349.9	739.3	1,539.1	0.00	0.00	
5,900.0	0.00	0.00	5,651.8	1,349.9	739.3	1,539.1	0.00	0.00	
6,000.0	0.00	0.00	5,751.8	1,349.9	739.3	1,539.1	0.00	0.00	
6,100.0	0.00	0.00	5,851.8	1,349.9	739.3	1,539.1	0.00	0.00	
6,200.0	0.00	0.00	5,951.8	1,349.9	739.3	1,539.1	0.00	0.00	
6,300.0	0.00	0.00	6,051.8	1,349.9	739.3	1,539.1	0.00	0.00	
6,400.0	0.00	0.00	6,151.8	1,349.9	739.3	1,539.1	0.00	0.00	
6,500.0	0.00	0.00	6,251.8	1,349.9	739.3	1,539.1	0.00	0.00	
6,600.0	0.00	0.00	6,351.8	1,349.9	739.3	1,539.1	0.00	0.00	
6,700.0	0.00	0.00	6,451.8	1,349.9	739.3	1,539.1	0.00	0.00	
6,800.0	0.00	0.00	6,551.8	1,349.9	739.3	1,539.1	0.00	0.00	
6,900.0	0.00	0.00	6,651.8	1,349.9	739.3	1,539.1	0.00	0.00	
7,000.0	0.00	0.00	6,751.8	1,349.9	739.3	1,539.1	0.00	0.00	
7,100.0	0.00	0.00	6,851.8	1,349.9	739.3	1,539.1	0.00	0.00	
7,124.8	0.00	0.00	6,876.6	1,349.9	739.3	1,539.1	0.00	0.00	Coal Ridge
7,200.0	0.00	0.00	6,951.8	1,349.9	739.3	1,539.1	0.00	0.00	
7,300.0	0.00	0.00	7,051.8	1,349.9	739.3	1,539.1	0.00	0.00	
7,400.0	0.00	0.00	7,151.8	1,349.9	739.3	1,539.1	0.00	0.00	
7,500.0	0.00	0.00	7,251.8	1,349.9	739.3	1,539.1	0.00	0.00	
7,600.0	0.00	0.00	7,351.8	1,349.9	739.3	1,539.1	0.00	0.00	
7,700.0	0.00	0.00	7,451.8	1,349.9	739.3	1,539.1	0.00	0.00	
7,800.0	0.00	0.00	7,551.8	1,349.9	739.3	1,539.1	0.00	0.00	
7,865.8	0.00	0.00	7,617.6	1,349.9	739.3	1,539.1	0.00	0.00	Base Cameo A Coal
7,900.0	0.00	0.00	7,651.8	1,349.9	739.3	1,539.1	0.00	0.00	
7,947.8	0.00	0.00	7,699.6	1,349.9	739.3	1,539.1	0.00	0.00	Rollins
8,000.0	0.00	0.00	7,751.8	1,349.9	739.3	1,539.1	0.00	0.00	
8,100.0	0.00	0.00	7,851.8	1,349.9	739.3	1,539.1	0.00	0.00	
8,200.0	0.00	0.00	7,951.8	1,349.9	739.3	1,539.1	0.00	0.00	
8,300.0	0.00	0.00	8,051.8	1,349.9	739.3	1,539.1	0.00	0.00	
8,400.0	0.00	0.00	8,151.8	1,349.9	739.3	1,539.1	0.00	0.00	
8,477.8	0.00	0.00	8,229.6	1,349.9	739.3	1,539.1	0.00	0.00	Cozzette
8,500.0	0.00	0.00	8,251.8	1,349.9	739.3	1,539.1	0.00	0.00	
8,600.0	0.00	0.00	8,351.8	1,349.9	739.3	1,539.1	0.00	0.00	
8,700.0	0.00	0.00	8,451.8	1,349.9	739.3	1,539.1	0.00	0.00	
8,799.8	0.00	0.00	8,551.6	1,349.9	739.3	1,539.1	0.00	0.00	Corcoran
8,800.0	0.00	0.00	8,551.8	1,349.9	739.3	1,539.1	0.00	0.00	
8,900.0	0.00	0.00	8,651.8	1,349.9	739.3	1,539.1	0.00	0.00	
9,000.0	0.00	0.00	8,751.8	1,349.9	739.3	1,539.1	0.00	0.00	

Cathedral Energy Services

Planning Report

Database: EDM 5000.1 US Multi Users DB
Company: EnCana Oil & Gas (USA) Inc
Project: Mamm Creek
Site: F25NWB Pad
Well: Benzel Federal 25-2A (F25NWB Pad) Directional Plan
Wellbore: DD
Design: Plan #1

Local Co-ordinate Reference: Well Benzel Federal 25-2A (F25NWB Pad) Direc
TVD Reference: KBE @ 5849.6ft (Original Well Elev)
MD Reference: KBE @ 5849.6ft (Original Well Elev)
North Reference: True
Survey Calculation Method: Minimum Curvature

Planned Survey

Measured Depth (ft)	Inclination (°)	Azimuth (°)	Vertical Depth (ft)	+N/-S (ft)	+E/-W (ft)	Vertical Section (ft)	Dogleg Rate (°/100ft)	Build Rate (°/100ft)	Comments / Formations
9,100.0	0.00	0.00	8,851.8	1,349.9	739.3	1,539.1	0.00	0.00	
9,200.0	0.00	0.00	8,951.8	1,349.9	739.3	1,539.1	0.00	0.00	
9,300.0	0.00	0.00	9,051.8	1,349.9	739.3	1,539.1	0.00	0.00	
9,349.8	0.00	0.00	9,101.6	1,349.9	739.3	1,539.1	0.00	0.00	TD @ 9349.8' MD - Benzel Federal 25-2A (F25)
9,400.0	0.00	0.00	9,151.8	1,349.9	739.3	1,539.1	0.00	0.00	
9,500.0	0.00	0.00	9,251.8	1,349.9	739.3	1,539.1	0.00	0.00	
9,600.0	0.00	0.00	9,351.8	1,349.9	739.3	1,539.1	0.00	0.00	
9,649.8	0.00	0.00	9,401.6	1,349.9	739.3	1,539.1	0.00	0.00	Permit TD @ 9649.8' MD

Targets

Target Name - hit/miss target - Shape	Dip Angle (°)	Dip Dir. (°)	TVD (ft)	+N/-S (ft)	+E/-W (ft)	Northing (ft)	Easting (ft)	Latitude	Longitude
Benzel Federal 25-2A (F - plan hits target center - Circle (radius 25.0)	0.00	0.00	5,373.6	1,349.9	739.3	1,616,078.30	2,372,615.86	39.503823	-107.723672
Benzel Federal 25-2A (F - plan hits target center - Circle (radius 40.0)	0.00	0.00	9,101.6	1,349.9	739.3	1,616,078.30	2,372,615.86	39.503823	-107.723672

Casing Points

Measured Depth (ft)	Vertical Depth (ft)	Name	Casing Diameter (in)	Hole Diameter (in)
1,450.0	1,403.2	Surface Casing	0.000	0.000

Formations

Measured Depth (ft)	Vertical Depth (ft)	Name	Lithology	Dip (°)	Dip Direction (°)
1,225.5	1,191.6	Molina		0.00	
1,741.0	1,677.6	Atwell Gulch		0.00	
4,069.1	3,872.6	Mesa Verde		0.00	
4,772.4	4,536.6	Williams Fork		0.00	
5,621.8	5,373.6	Top of Gas		0.00	
7,124.8	6,876.6	Coal Ridge		0.00	
7,865.8	7,617.6	Base Cameo A Coal		0.00	
7,947.8	7,699.6	Rollins		0.00	
8,477.8	8,229.6	Cozzette		0.00	
8,799.8	8,551.6	Corcoran		0.00	

Cathedral Energy Services

Planning Report

Database: EDM 5000.1 US Multi Users DB
Company: EnCana Oil & Gas (USA) Inc
Project: Mamm Creek
Site: F25NWB Pad
Well: Benzel Federal 25-2A (F25NWB Pad) Directional Plan
Wellbore: DD
Design: Plan #1

Local Co-ordinate Reference:
TVD Reference:
MD Reference:
North Reference:
Survey Calculation Method:

Well Benzel Federal 25-2A (F25NWB Pad) Direc
 KBE @ 5849.6ft (Original Well Elev)
 KBE @ 5849.6ft (Original Well Elev)
 True
 Minimum Curvature

Plan Annotations

Measured Depth (ft)	Vertical Depth (ft)	Local Coordinates		Comment
		+N/-S (ft)	+E/-W (ft)	
200.0	200.0	0.0	0.0	KOP @ 200' MD
848.8	836.4	95.7	52.4	EOB; Inc=19.47°
4,648.5	4,419.0	1,206.3	660.6	Start Drop -2.00
5,621.8	5,373.6	1,349.9	739.3	EOD; Inc=0°
9,349.8	9,101.6	1,349.9	739.3	TD @ 9349.8' MD
9,649.8	9,401.6	1,349.9	739.3	Permit TD @ 9649.8' MD