

T8N, R61W, 6th. P.M.

CARRIZO OIL & GAS, INC.

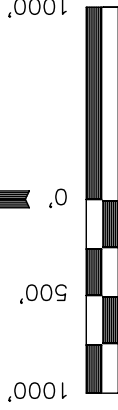
Well location, ROTHE #12-14-8-61, located as shown in the SW 1/4 SW 1/4 of Section 12, T8N, R61W, 6th. P.M., Weld County, Colorado.

BASIS OF ELEVATION

SPOT ELEVATION LOCATED AT THE NORTHEAST CORNER OF SECTION 2, T9N, R61W, 6th P.M. TAKEN FROM THE GROVER SOUTH, QUADRANGLE, COLORADO, WELD COUNTY, 7.5 MINUTE QUAD (TOPOGRAPHIC MAP) PUBLISHED BY THE UNITED STATES DEPARTMENT OF THE INTERIOR, GEOLOGICAL SURVEY. SAID ELEVATION IS MARKED AS BEING 5043 FEET.

BASIS OF BEARINGS

BASIS OF BEARINGS IS A G.P.S. OBSERVATION.



SCALE

CERTIFICATE

THIS IS TO CERTIFY THAT THE ABOVE PLAT WAS PREPARED FROM FIELD NOTES OF ACTUAL SURVEYS MADE BY ME OR UNDER MY SUPERVISION AND THAT THE SAME ARE TRUE AND CORRECT TO THE BEST OF MY KNOWLEDGE AND BELIEF.

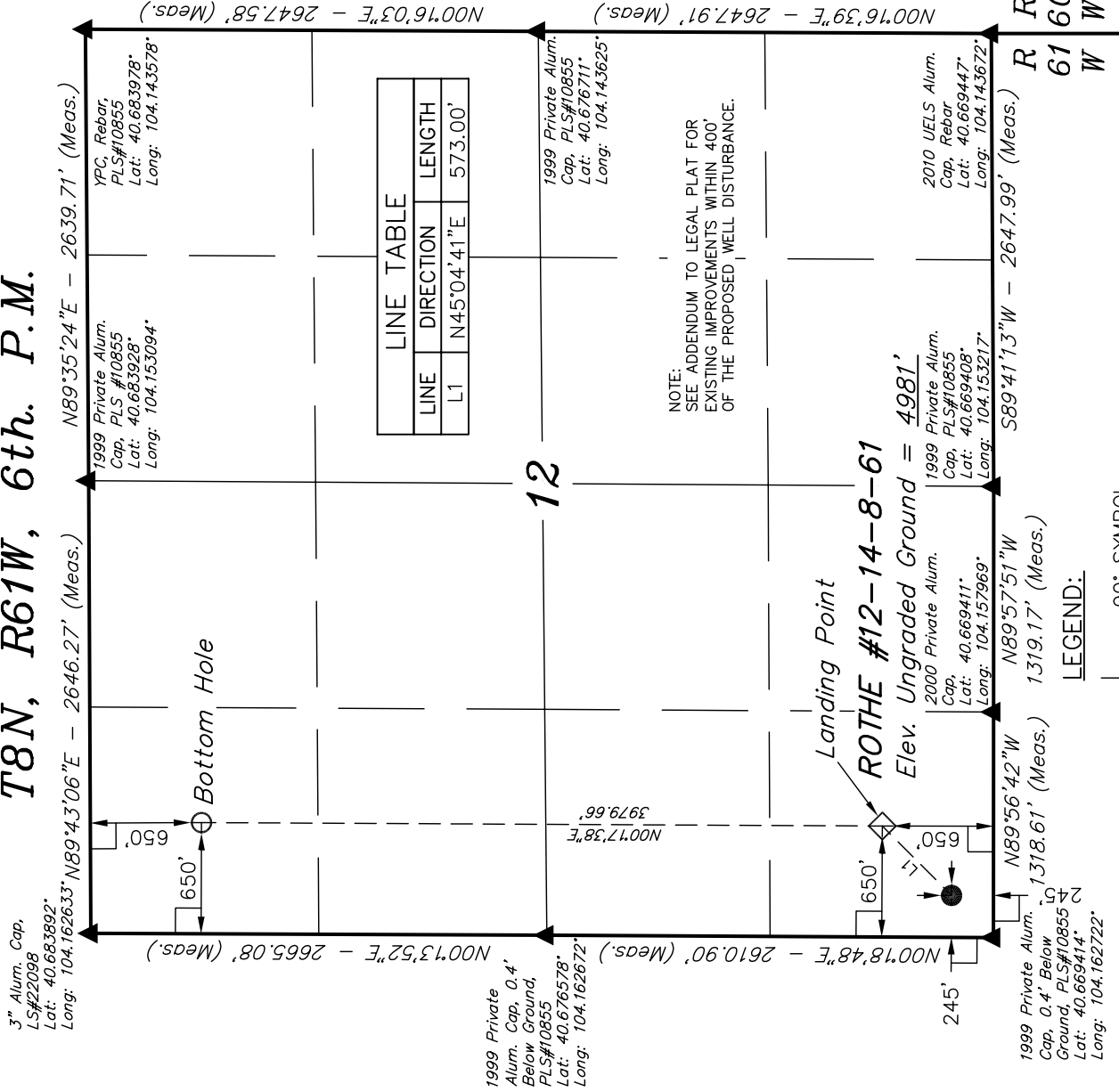
REGISTERED LAND SURVEYOR
REGISTRATION NO. 17492
STATE OF UTAH 08-09-11

UINTAH ENGINEERING & LAND SURVEYING

85 SOUTH 200 EAST - VERNAL, UTAH 84078

(435) 789-1017

SCALE 1" = 1000'	DATE SURVEYED: 06-01-11	DATE DRAWN: 06-08-11
PARTY L.S. C.T. J.I.	REFERENCES G.L.O. PLAT	
WEATHER WARM	FILE	
		CARRIZO OIL & GAS, INC.



NAD 83 (TARGET LANDING POINT)	NAD 83 (TARGET BOTTOM HOLE)	NAD 83 (SURFACE LOCATION)
LATITUDE = 40°40'16.31" (40.671197)	LATITUDE = 40°40'55.62" (40.682117)	LATITUDE = 40°40'12.31" (40.670086)
LONGITUDE = 104°09'37.34" (104.160372)	LONGITUDE = 104°09'37.07" (104.160297)	LONGITUDE = 104°09'42.61" (104.161836)
NAD 27 (TARGET LANDING POINT)	NAD 27 (TARGET BOTTOM HOLE)	NAD 27 (SURFACE LOCATION)
LATITUDE = 40°40'16.36" (40.671211)	LATITUDE = 40°40'55.67" (40.682131)	LATITUDE = 40°40'12.36" (40.670100)
LONGITUDE = 104°09'35.52" (104.159867)	LONGITUDE = 104°09'35.26" (104.159794)	LONGITUDE = 104°09'40.79" (104.161331)

LINE TABLE		
LINE	DIRECTION	LENGTH
L1	S89°59'28"W	73'
L2	S89°59'28"W	59'
L3	S89°59'28"W	45'
L4	S89°59'28"W	29'
L5	S89°59'28"W	21'

