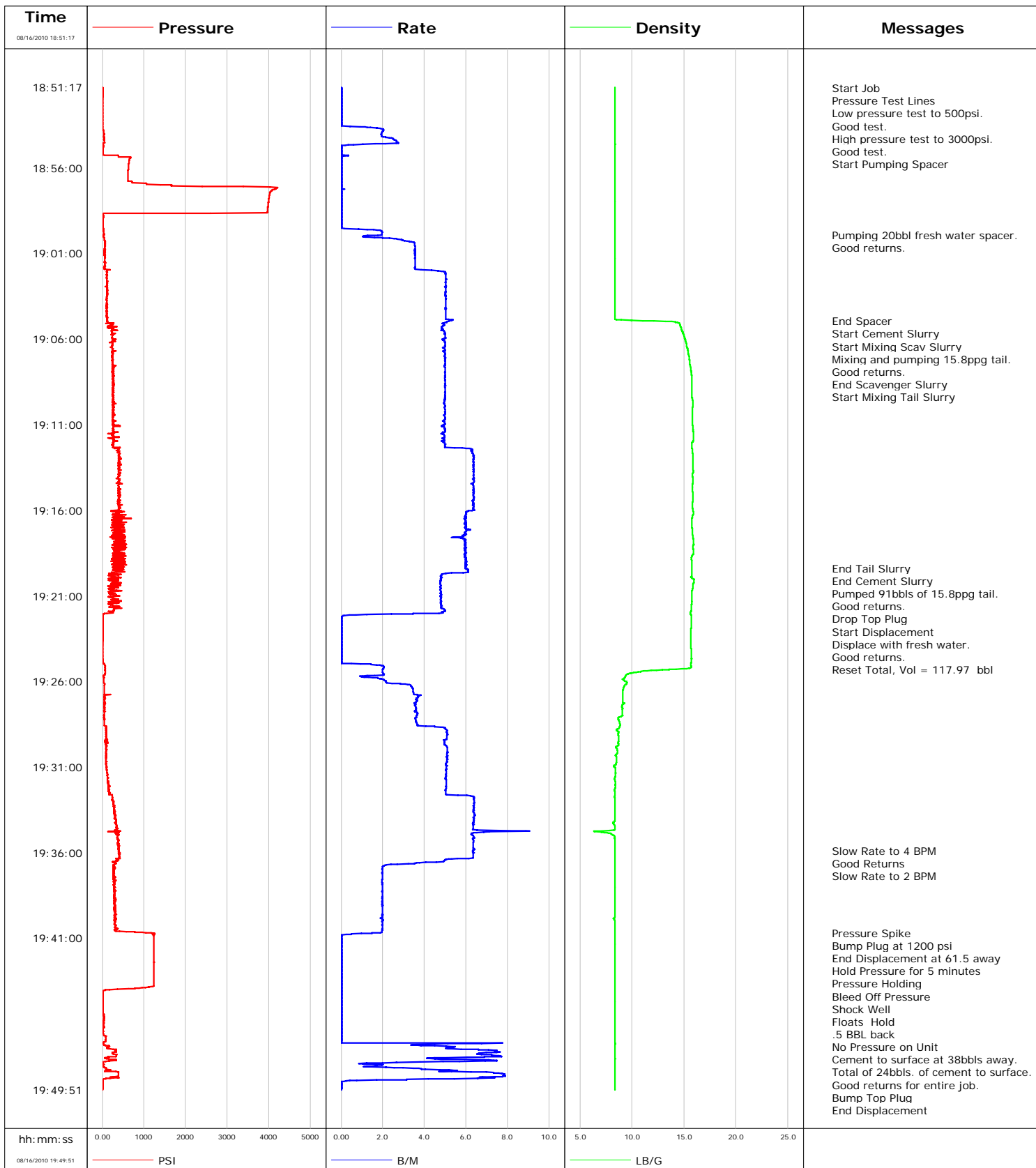


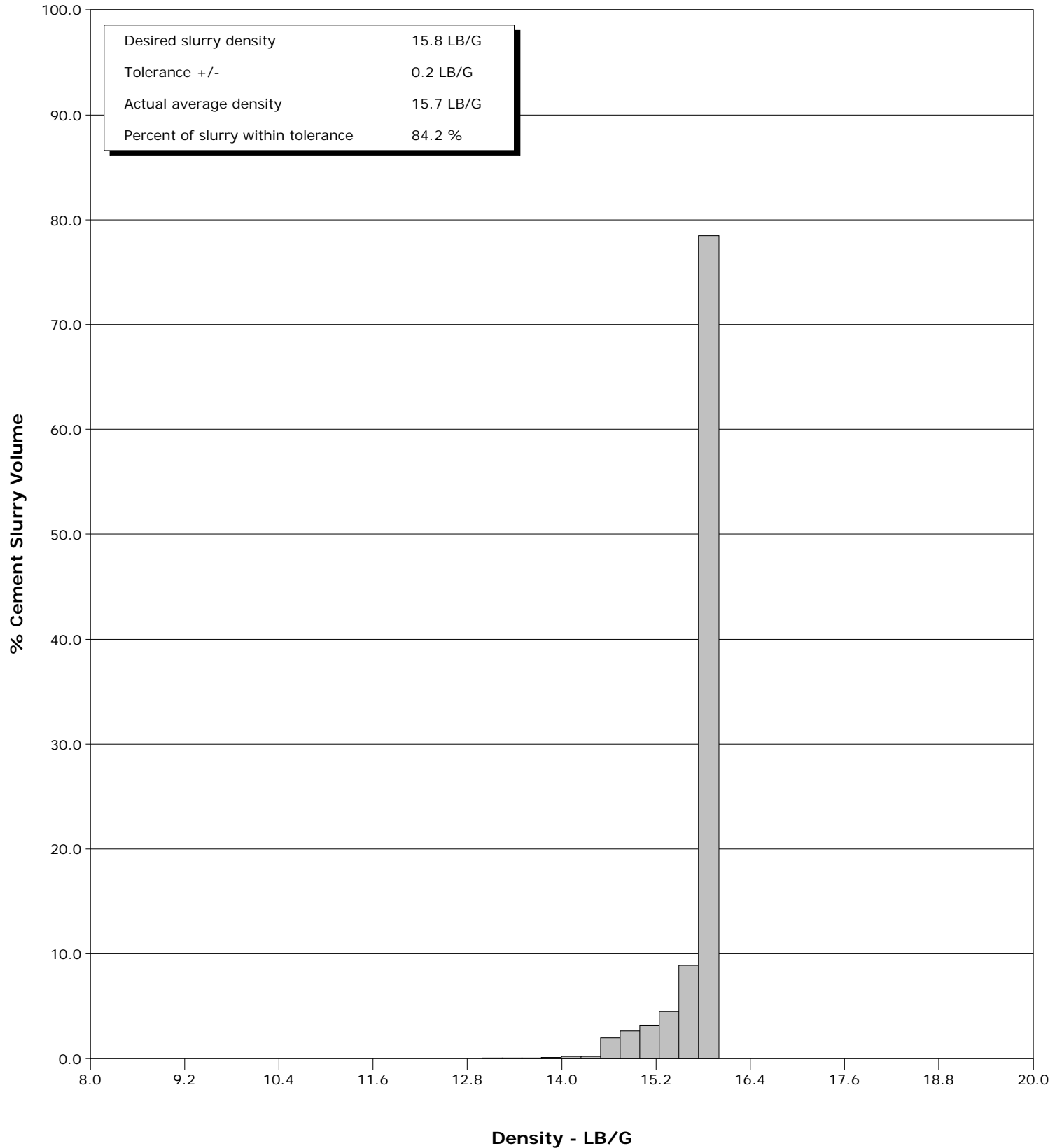
Well	FEDERAL 20-7BB	Client	Encana
Field	Parachute	SIR No.	BAD4-00158
Engineer	Jeff Patterson	Job Type	Surface
Country	United States	Job Date	08-16-2010



Well FEDERAL 20-7BB
Field Parachute
Engineer Jeff Patterson
Country United States

Client Encana
SIR No. BAD4-00158
Job Type Surface
Job Date 08-16-2010

Cement Slurry - 08/16/2010 19:04:58 to 08/16/2010 19:19:23



Page 1 of 4

Well FEDERAL 20-7BB FEDERAL 20-7BB			Field Parachute		Job Start Aug/16/2010	Customer Encana	Job Number BAD4-00158
Date	Time 24-hr clock	Treating Pressure PSI	Flow Rate B/M	Density LB/G	Volume BBL	Message	
08/16/2010	18:59:58	15	1.3	8.37	3.0		
08/16/2010	19:00:46	62	3.5	8.37	5.4		
08/16/2010	19:02:26	103	5.0	8.37	11.9		
08/16/2010	19:04:06	96	5.0	8.37	20.3		
08/16/2010	19:04:56					End Spacer	
08/16/2010	19:04:56	118	5.2	11.05	24.5		
08/16/2010	19:04:58					Start Cement Slurry	
08/16/2010	19:04:58	120	5.1	13.22	24.7		
08/16/2010	19:04:59					Start Mixing Scav Slurry	
08/16/2010	19:04:59	113	5.1	13.83	24.8		
08/16/2010	19:05:04					Mixing and pumping 15.8ppg tail.	
08/16/2010	19:05:04	268	4.9	14.56	25.2		
08/16/2010	19:05:05					Good returns.	
08/16/2010	19:05:05	82	4.9	14.58	25.3		
08/16/2010	19:05:46	241	5.0	14.99	28.6		
08/16/2010	19:07:26	244	5.0	15.57	36.9		
08/16/2010	19:07:38					End Scavenger Slurry	
08/16/2010	19:07:38	240	5.0	15.63	37.9		
08/16/2010	19:07:39					Start Mixing Tail Slurry	
08/16/2010	19:07:39	234	5.0	15.64	38.0		
08/16/2010	19:09:06	271	5.0	15.77	45.2		
08/16/2010	19:10:46	238	5.0	15.80	53.5		
08/16/2010	19:12:26	397	6.3	15.79	61.9		
08/16/2010	19:14:06	373	6.4	15.84	72.4		
08/16/2010	19:15:46	426	6.4	15.81	83.0		
08/16/2010	19:17:26	261	5.9	15.83	93.1		
08/16/2010	19:19:06	504	6.0	15.77	103.0		
08/16/2010	19:19:22					End Tail Slurry	
08/16/2010	19:19:22	409	6.0	15.78	104.6		
08/16/2010	19:19:23					End Cement Slurry	
08/16/2010	19:19:23	264	6.0	15.78	104.7		
08/16/2010	19:19:25					Pumped 91bbls of 15.8ppg tail.	
08/16/2010	19:19:25	500	6.0	15.78	104.9		
08/16/2010	19:19:26					Good returns.	
08/16/2010	19:19:26	277	6.0	15.78	105.0		
08/16/2010	19:20:46	141	4.8	15.76	111.7		
08/16/2010	19:22:05					Drop Top Plug	
08/16/2010	19:22:05	-9	1.2	15.67	117.9		
08/16/2010	19:22:06					Start Displacement	
08/16/2010	19:22:06	23	1.2	15.67	117.9		
08/16/2010	19:22:08					Displace with fresh water.	
08/16/2010	19:22:08					Good returns.	
08/16/2010	19:22:08	7	0.4	15.69	118.0		
08/16/2010	19:22:13					Reset Total, Vol = 117.97 bbl	
08/16/2010	19:22:13	10	0.0	15.69	118.0		
08/16/2010	19:22:26	7	0.0	15.69	118.0		
08/16/2010	19:24:06	-1	0.0	15.68	118.0		
08/16/2010	19:25:46	37	1.3	9.33	119.4		
08/16/2010	19:27:26	47	3.6	9.04	124.7		
08/16/2010	19:29:06	84	5.1	8.68	131.4		
08/16/2010	19:30:46	87	5.0	8.48	139.9		
08/16/2010	19:32:26	149	5.0	8.35	148.3		
08/16/2010	19:34:06	320	6.4	8.37	158.6		
08/16/2010	19:35:46	373	6.4	8.37	169.3		

Well FEDERAL 20-7BB FEDERAL 20-7BB			Field Parachute		Job Start Aug/16/2010	Customer Encana	Job Number BAD4-00158
Date	Time 24-hr clock	Treating Pressure PSI	Flow Rate B/M	Density LB/G	Volume BBL	Message	
08/16/2010	19:35:53	394	6.3	8.36	170.0		
08/16/2010	19:36:22					Good Returns	
08/16/2010	19:36:22	352	5.3	8.37	173.1		
08/16/2010	19:36:24					Slow Rate to 2 BPM	
08/16/2010	19:36:24	356	5.1	8.37	173.3		
08/16/2010	19:37:26	306	2.0	8.36	176.0		
08/16/2010	19:39:06	301	2.0	8.36	179.3		
08/16/2010	19:40:41					Pressure Spike	
08/16/2010	19:40:41	1044	1.9	8.36	182.4		
08/16/2010	19:40:42					Bump Plug at 1200 psi	
08/16/2010	19:40:42	1175	1.5	8.36	182.5		
08/16/2010	19:40:43					End Displacement at 61.5 away	
08/16/2010	19:40:43					Hold Pressure for 5 minutes	
08/16/2010	19:40:43	1248	1.5	8.36	182.5		
08/16/2010	19:40:46	1233	0.5	8.36	182.5		
08/16/2010	19:42:26	1232	0.0	8.36	182.5		
08/16/2010	19:43:19					Pressure Holding	
08/16/2010	19:43:19	1233	0.0	8.37	182.5		
08/16/2010	19:44:00					Bleed Off Pressure	
08/16/2010	19:44:00					Shock Well	
08/16/2010	19:44:00	176	0.0	8.37	182.5		
08/16/2010	19:44:01					Floats Hold	
08/16/2010	19:44:01	66	0.0	8.37	182.5		
08/16/2010	19:44:02					.5 BBL back	
08/16/2010	19:44:02	66	0.0	8.37	182.5		
08/16/2010	19:44:06	1	0.0	8.37	182.5		
08/16/2010	19:44:37					No Pressure on Unit	
08/16/2010	19:44:37	3	0.0	8.36	182.5		
08/16/2010	19:44:38					Cement to surface at 38bbbls away.	
08/16/2010	19:44:38	3	0.0	8.36	182.5		
08/16/2010	19:45:43					Total of 24bbbls. of cement to surface.	
08/16/2010	19:45:43					Good returns for entire job.	
08/16/2010	19:45:43	32	0.0	8.37	182.5		
08/16/2010	19:45:46	39	0.0	8.37	182.5		
08/16/2010	19:47:26	112	5.0	8.36	184.0		
08/16/2010	19:49:06	301	7.4	8.37	193.1		
08/16/2010	19:49:46					Bump Top Plug	
08/16/2010	19:49:46	7	0.0	8.37	194.2		
08/16/2010	19:49:48					End Displacement	
08/16/2010	19:49:48	7	0.0	8.37	194.2		
08/16/2010	19:49:49					End Job	
08/16/2010	19:49:49	6	0.0	8.37	194.2		

Well FEDERAL 20-7BB FEDERAL 20-7BB	Field Parachute	Job Start Aug/16/2010	Customer Encana	Job Number BAD4-00158
---------------------------------------	--------------------	--------------------------	--------------------	--------------------------

Post Job Summary

Average Pump Rates,					Volume of Fluid Injected, bbl			
Slurry	N2	Mud	Maximum Rate	8.0	Total Slurry	Mud	Spacer	N2
					91.0		20.0	
Treating Pressure Summary, psi					Breakdown Fluid			
Maximum	Final	Average	Bump Plug to	Breakdown	Type	Volume		Density
3000	1200	300	1200					
Avg. N2 Percent	Designed Slurry Volume		Displacement	Mix Water Temp	Cement Circulated to Surface?	Volume		
	91.0 bbl		62.0 bbl	65 degF	<input checked="" type="checkbox"/>	24.0 bbl		
					Washed Thru Perfs	To		
					<input type="checkbox"/>			
Customer or Authorized Representative			Schlumberger Supervisor			Circulation Lost	Job Completed	
Tony Ketterling			Jeff Patterson			<input type="checkbox"/>	<input checked="" type="checkbox"/>	
						-	-	