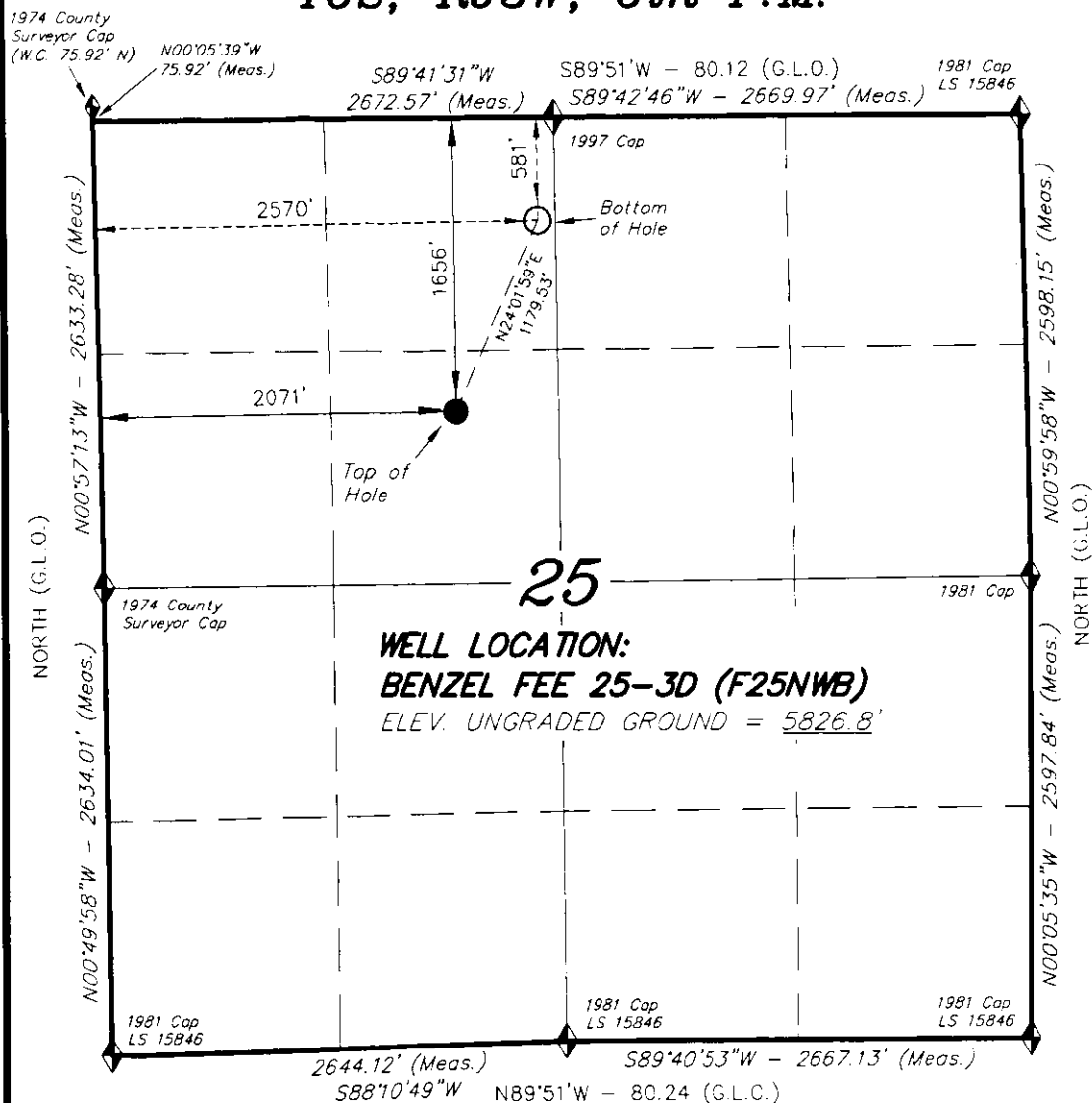


**T6S, R93W, 6th P.M.**



◆ = SECTION CORNERS LOCATED

Basis of elevation is the Rifle 2 Triangulation Station. 39°31'53.80" N Lat. & 107°47'07.78" W Long. (NAD 83). Elevation = 5323.1' (NAVD88).

**NAD 83 (SURFACE LOCATION)**  
 LATITUDE = 39°30'00.76" (39.500211)  
 LONGITUDE = 107°43'34.65" (107.726291)

**ENCANA OIL & GAS (USA) INC**

WELL LOCATION, BENZEL FEE 25-3D (F25NWB), LOCATED AS SHOWN IN THE SE 1/4 NW 1/4 OF SECTION 25, T6S, R93W, 6th P.M. GARFIELD COUNTY, COLORADO.



**NOTES:**

1. Well footages are measured at right angles to the Section Lines.
2. Bearings are based on Global Positioning Satellite observations.
3. G.P.S. Operator: C.D. SLAUGH, (PDOP) = 2.4

**IMPROVEMENT NOTE:**

See addendum to legal plat (sheet 2v) for visible improvements within 400' of the proposed well pad.

THIS IS TO CERTIFY THAT THE ABOVE PLAT WAS PREPARED FROM FIELD NOTES OF SURVEYS MADE BY ME OR UNDER MY SUPERVISION. THE LOCATION HAS BEEN STAKED ON THE GROUND AS SHOWN ON THE PLAT, AND THAT THE SAME ARE TRUE AND CORRECT TO THE BEST OF MY KNOWLEDGE AND BELIEF.

*Steve L. Smith*  
 # 30125  
 REGISTERED LAND SURVEYOR  
 REGISTRATION No. 03-05-24-11  
 STATE OF COLORADO

**TRI STATE LAND SURVEYING & CONSULTING**  
 160 NORTH VERNAL AVE. - VERNAL, UTAH 84078  
 (435) 781-2501

DATE SURVEYED: 11-08-10	SURVEYED BY: C.D.S.	SHEET <b>2q</b> OF 11
DATE DRAWN: 02-28-11	DRAWN BY: L.C.S.	
REVISED: L.C.S. 03-24-11	SCALE: 1" = 1000'	